

John R. Lewis Elementary Redistricting

Description	Student Moves	Portable Reduction
Superintendent Recommendation	524	-17

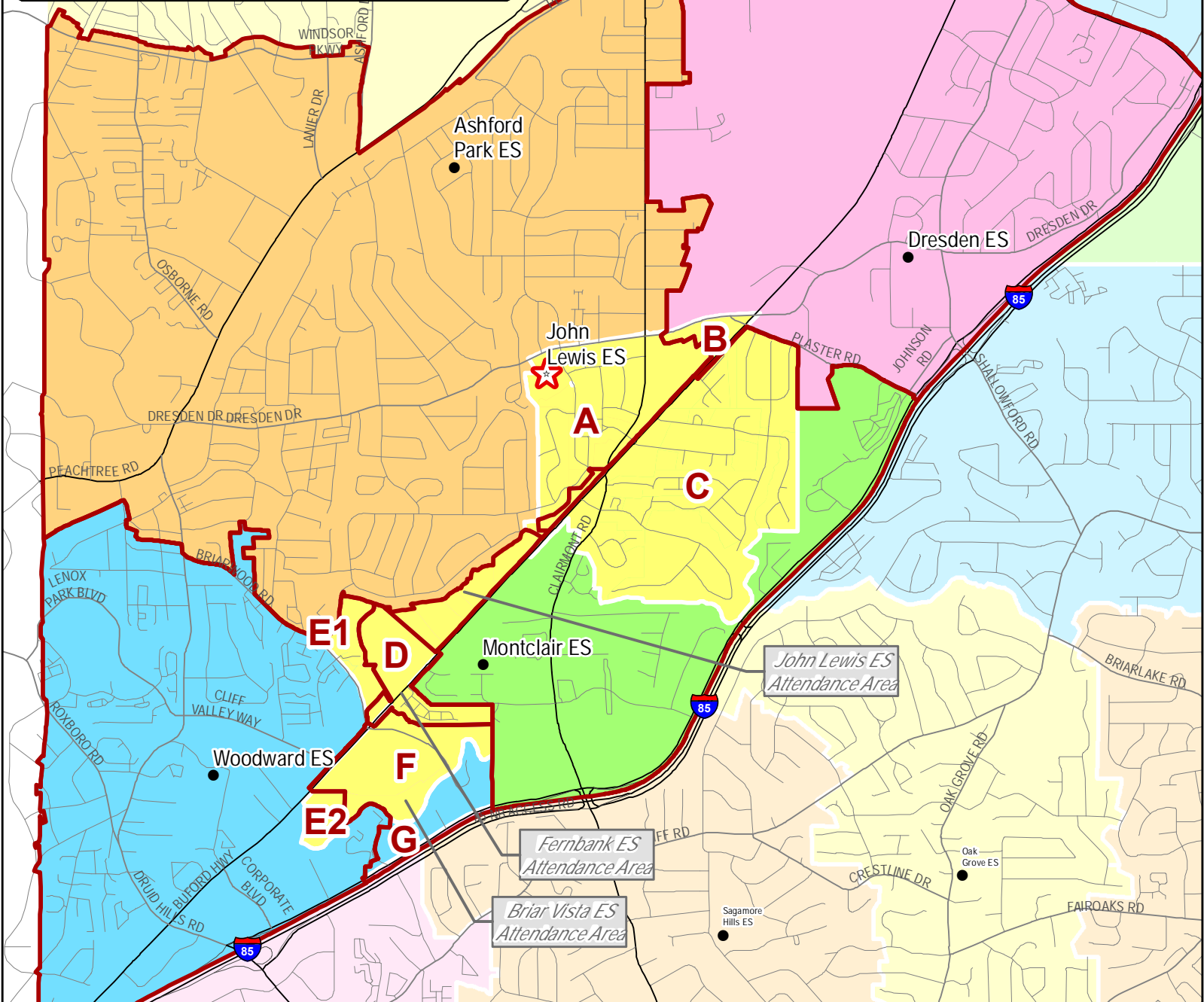
No Changes	School Name	Clusters	Fall 19 ENR	Net Moves	Capacity	Utilization	Portable	P-Diff
	Ashford Park ES	Chamblee	640		502	127.5%	10	
	Dresden ES	Cross Keys	1,009		733	137.7%	20	
	John Lewis ES	Cross Keys	374		950	39.4%	0	
	Montclair ES	Cross Keys	731		673	108.6%	11	
	Woodward ES	Cross Keys	812		713	113.9%	8	
	ES Total		3,566		3,571	99.9%	49	
	Chamblee MS	Chamblee	1,007		1,053	95.6%	0	
	Sequoyah MS	Cross Keys	1,822		1,369	133.1%	38	
	MS Total		2,829		2,422	116.8%	38	
	Chamblee HS	Chamblee	1,741		1,723	101.0%	4	
	Cross Keys HS	Cross Keys	1,581		1,286	122.9%	27	
	HS Total		3,322		3,009	110.4%	31	
	All Total		9,717		9,002	107.9%	118	

Superintendent Recommendation	School Name	Clusters	Fall 19 ENR	Net Moves	Capacity	Utilization	Portable	P-Diff
	Ashford Park ES	Chamblee	618	-22	502	123.1%	10	0
	Dresden ES	Cross Keys	1,009	0	733	137.7%	20	0
	John Lewis ES	Cross Keys	898	+524	950	94.5%	0	0
	Montclair ES	Cross Keys	638	-93	673	94.8%	1	-10
	Woodward ES	Cross Keys	678	-134	713	95.1%	1	-7
	ES Total		3,841	387	3,571	107.6%	32	-17
	Chamblee MS	Chamblee	999	-8	1,053	94.9%	0	0
	Sequoyah MS	Cross Keys	1,830	+8	1,369	133.7%	38	0
	MS Total		2,829	8	2,422	116.8%	38	0
	Chamblee HS	Chamblee	1,727	-14	1,723	100.2%	4	0
	Cross Keys HS	Cross Keys	1,595	+14	1,286	124.0%	27	0
	HS Total		3,322	14	3,009	110.4%	31	0
	All Total		9,992	+409	9,002	111.0%	101	-17

This page is intentionally left blank.



John R. Lewis
Elementary Redistricting
Superintendent
Recommendation



Legend

- New John R. Lewis Facility
- Schools
- Existing Attendance Areas
- Proposed Elementary Attendance Areas

Elementary School Moves for Fall 2019

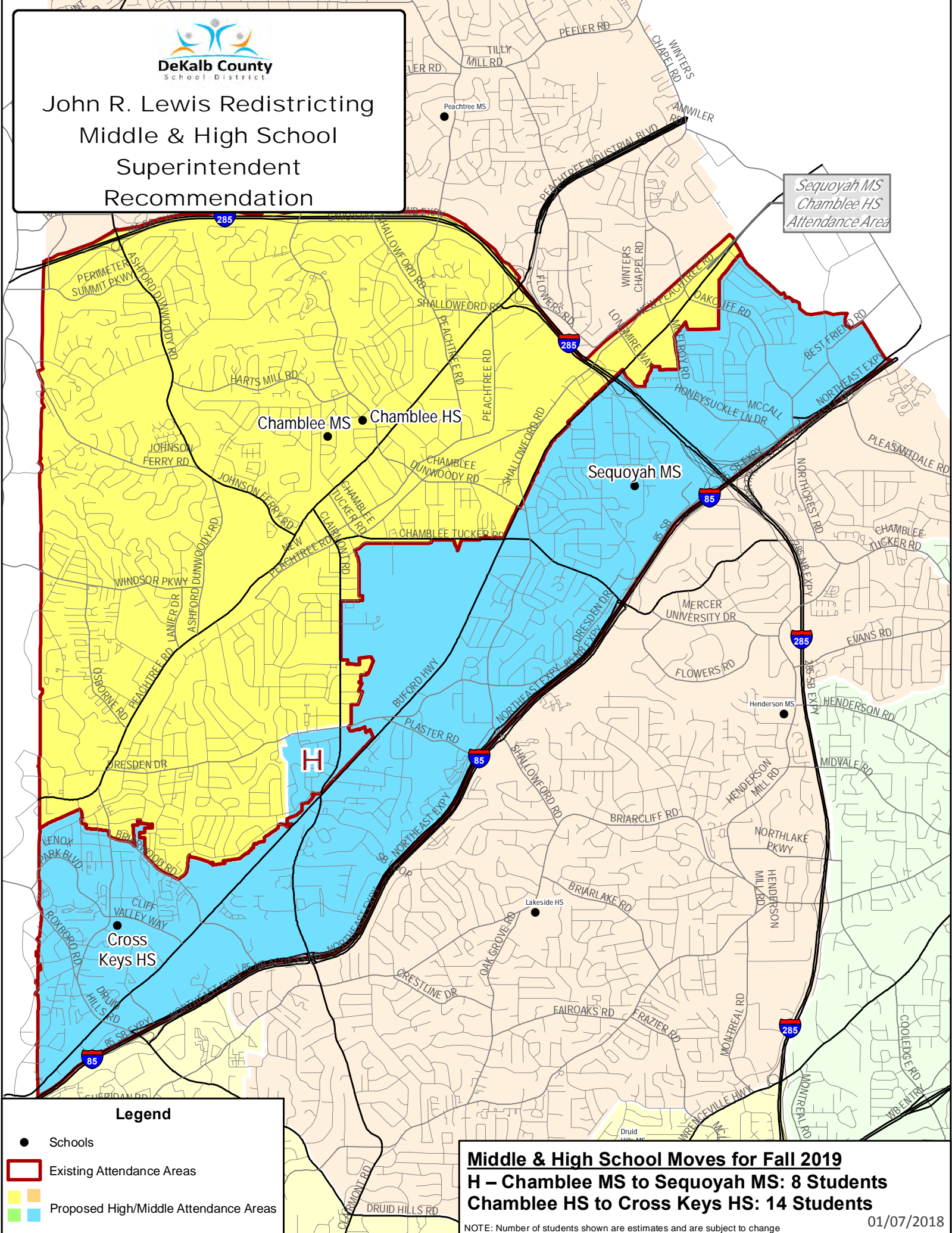
- A – Ashford Park ES to John Lewis ES: 22 Students**
- B – Dresden ES to John Lewis ES: 0 Students**
- C – Montclair ES to John Lewis ES: 93 Students**
- D – Fernbank ES to John Lewis ES: 213 Students**
- E1 – Woodward ES to John Lewis ES: 43 Students**
- E2 - Woodward ES to John Lewis ES: 91 Students**
- F – Briar Vista ES to John Lewis ES: 62 Students**
- G – Briar Vista ES to Woodward ES: 0 Students**

NOTE: Number of students shown are estimates and are subject to change



John R. Lewis Redistricting Middle & High School Superintendent Recommendation

*Sequoyah MS
Chamblee HS
Attendance Area*



Legend

- Schools
- Existing Attendance Areas
- Proposed High/Middle Attendance Areas

Middle & High School Moves for Fall 2019
H – Chamblee MS to Sequoyah MS: 8 Students
Chamblee HS to Cross Keys HS: 14 Students

Redistricting Area Superintendent Recommendation

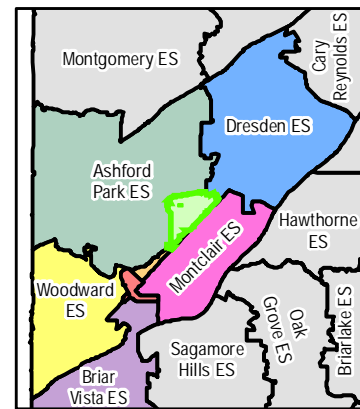
Ashford Park ES to John Lewis ES

A

22 Students Moving

Legend

- Elementary Schools
- ▭ Areas of Change
- ▭ Existing Attendance Areas
- ▭ Apartments
- ▭ Multi-Family
- ▭ Single Family Homes
- ▭ Residential Other (Extended Stays)
- ▭ Non-Residential
- ▭ Schools



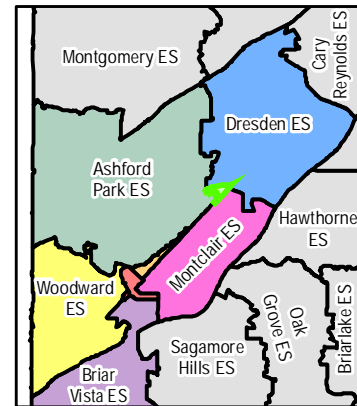
**Redistricting Area
Superintendent
Recommendation
Dresden ES to
John Lewis ES**

B

0 Students Moving

Legend

- Elementary Schools
- ▭ Areas of Change
- ▭ Existing Attendance Areas
- ▭ Apartments
- ▭ Multi-Family
- ▭ Single Family Homes
- ▭ Residential Other (Extended Stays)
- ▭ Non-Residential
- ▭ Schools



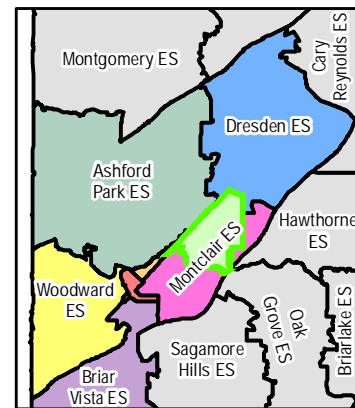
Redistricting Area Superintendent Recommendation
Montclair ES to John Lewis ES

C

93 Students Moving

Legend

- Elementary Schools
- ▭ Areas of Change
- ▭ Existing Attendance Areas
- ▭ Apartments
- ▭ Multi-Family
- ▭ Single Family Homes
- ▭ Residential Other (Extended Stays)
- ▭ Non-Residential
- ▭ Schools



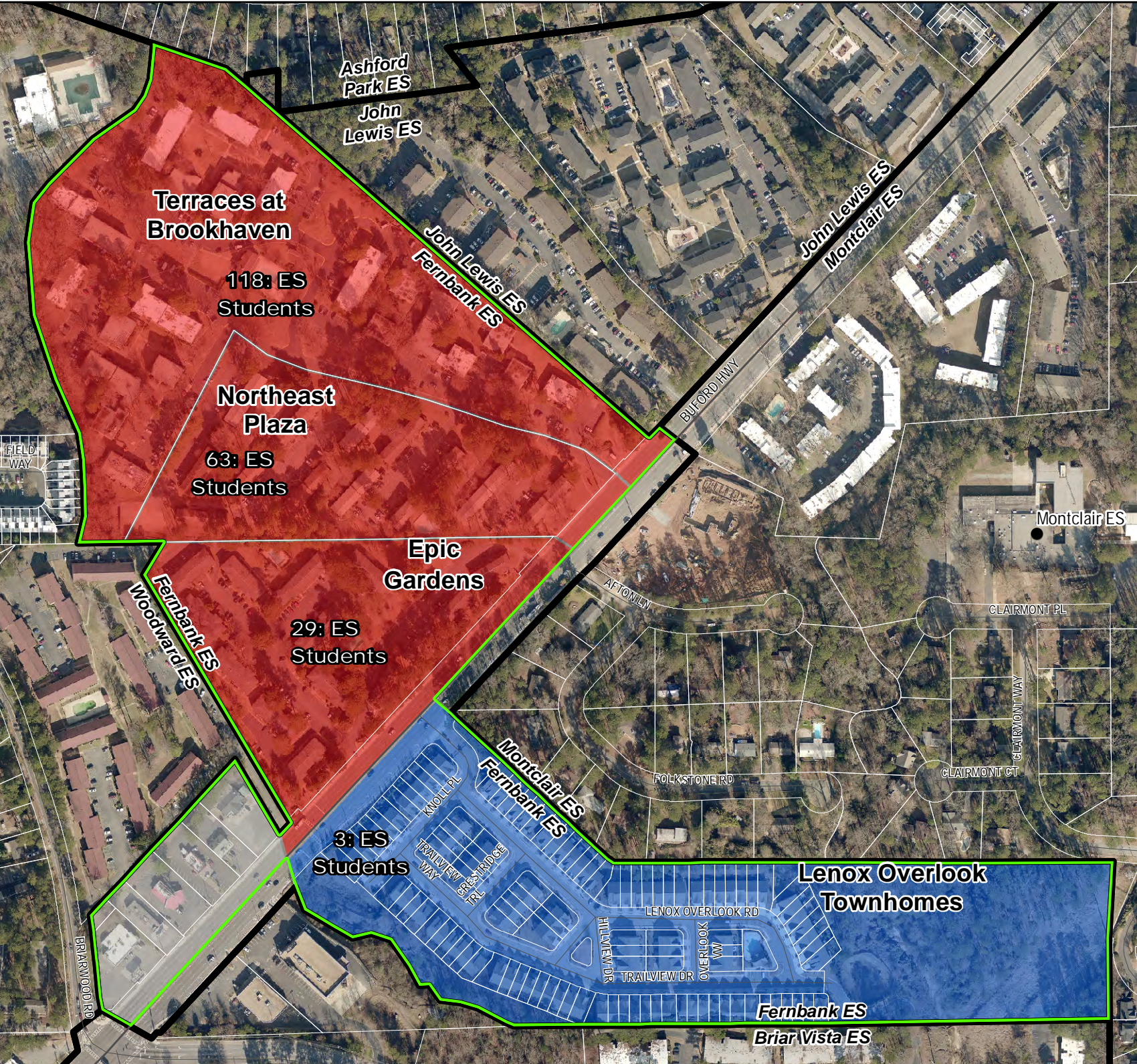
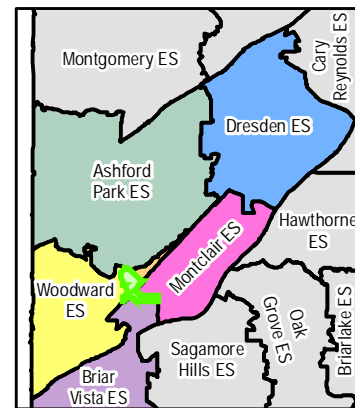
Redistricting Area Superintendent Recommendation
Fernbank ES to John Lewis ES

D

213 Students Moving

Legend

- Elementary Schools
- ▭ Areas of Change
- ▭ Existing Attendance Areas
- ▭ Apartments
- ▭ Multi-Family
- ▭ Single Family Homes
- ▭ Residential Other (Extended Stays)
- ▭ Non-Residential
- ▭ Schools



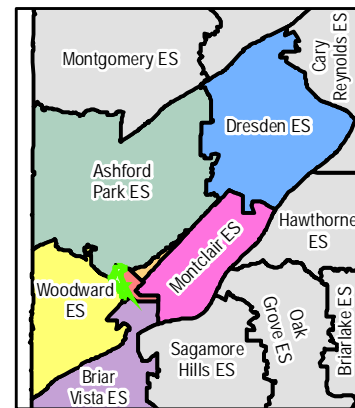
**Redistricting Area
Superintendent
Recommendation
Woodward ES to
John Lewis ES**

E1

43 Students Moving

Legend

- Elementary Schools
- ▭ Areas of Change
- ▭ Existing Attendance Areas
- ▭ Apartments
- ▭ Multi-Family
- ▭ Single Family Homes
- ▭ Residential Other (Extended Stays)
- ▭ Non-Residential
- ▭ Schools



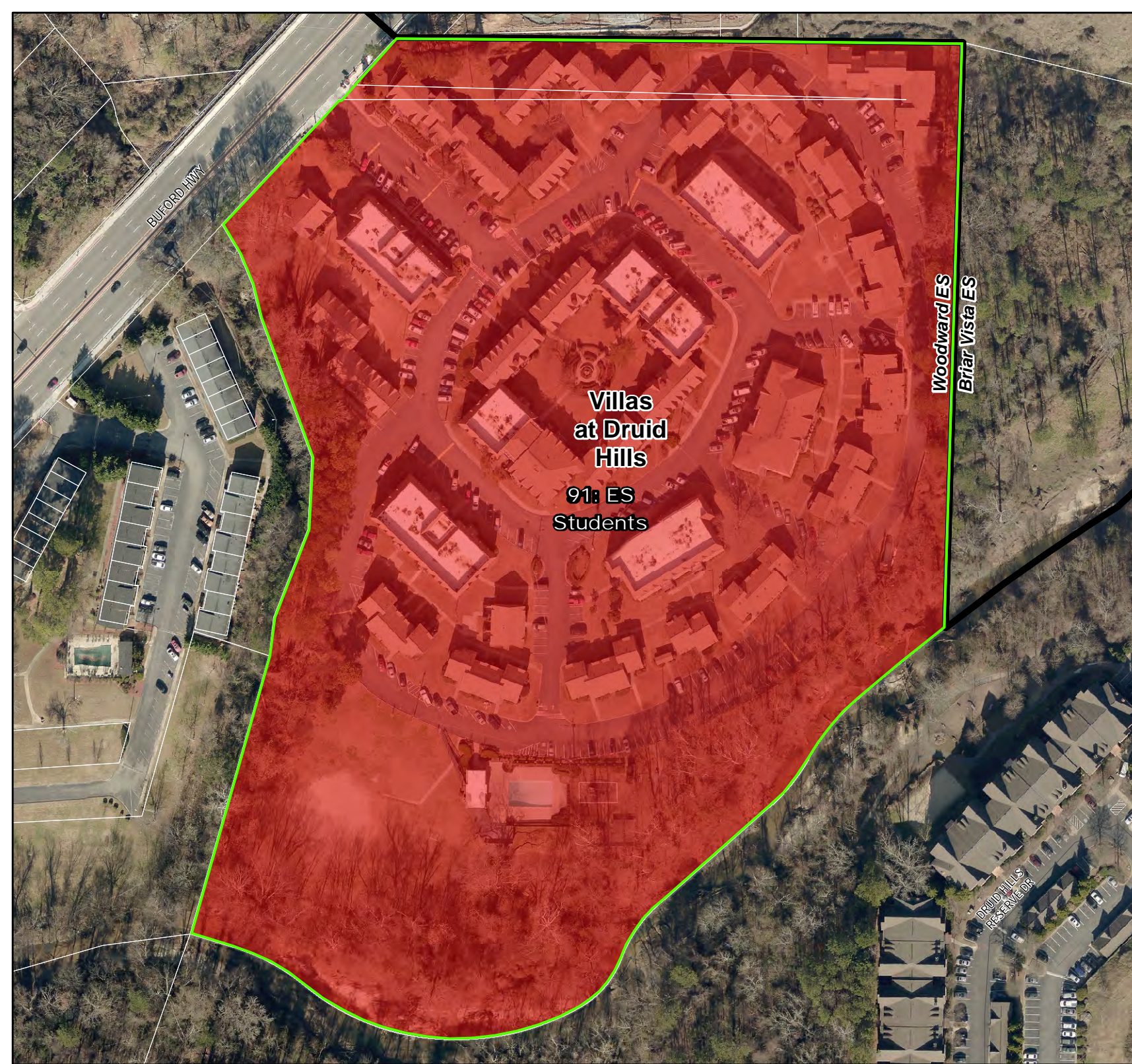
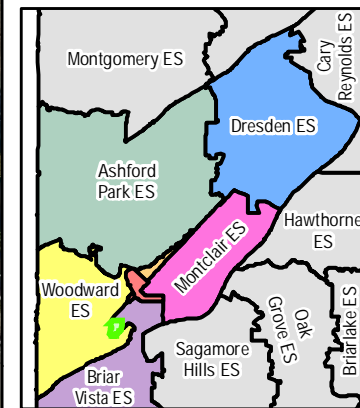
**Redistricting Area
Superintendent
Recommendation
Woodward ES to
John Lewis ES**

E2

91 Students Moving

Legend

- Elementary Schools
- ▭ Areas of Change
- ▭ Existing Attendance Areas
- ▭ Apartments
- ▭ Multi-Family
- ▭ Single Family Homes
- ▭ Residential Other (Extended Stays)
- ▭ Non-Residential
- ▭ Schools



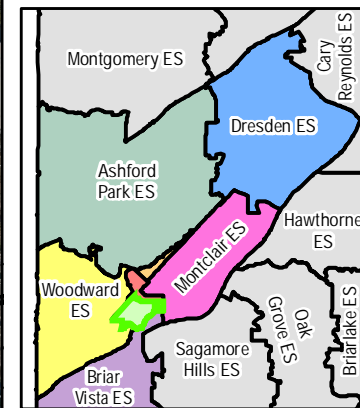
**Redistricting Area
Superintendent
Recommendation
Briar Vista ES to
John Lewis ES**

F

62 Students Moving

Legend

- Elementary Schools
- ▭ Areas of Change
- ▭ Existing Attendance Areas
- ▭ Apartments
- ▭ Multi-Family
- ▭ Single Family Homes
- ▭ Residential Other (Extended Stays)
- ▭ Non-Residential
- ▭ Schools



**Redistricting Area
Superintendent
Recommendation
Briar Vista ES to
Woodward ES**

G

0 Students Moving

Legend

- Elementary Schools
- ▭ Areas of Change
- ▭ Existing Attendance Areas
- ▭ Apartments
- ▭ Multi-Family
- ▭ Single Family Homes
- ▭ Residential Other (Extended Stays)
- ▭ Non-Residential
- ▭ Schools

