



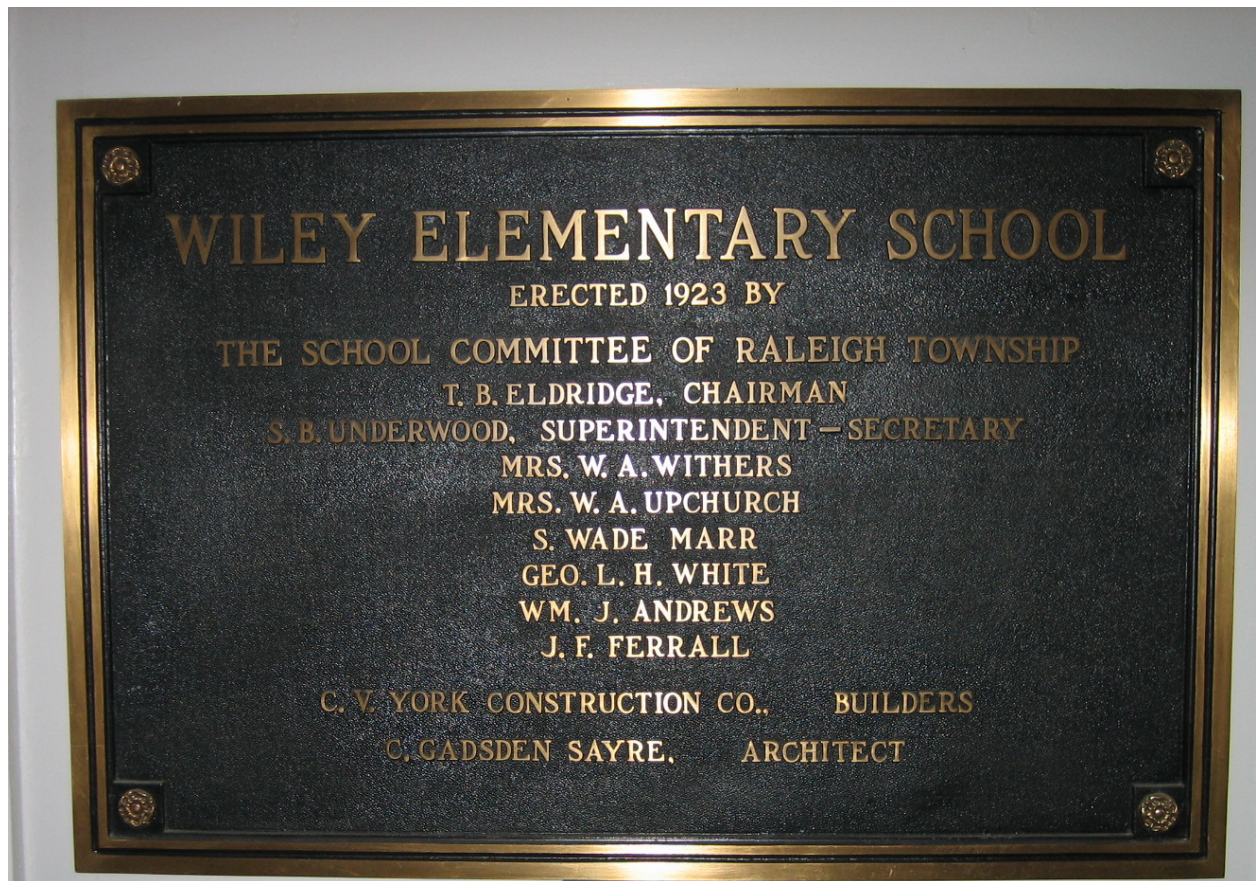
Wiley Elementary – Schematic Design

BOARD OF EDUCATION – Facilities Committee Meeting

Sheri Green, ALEP

October 11, 2017

Wiley Elementary – dedication plaque from 1923



Wiley Elementary – circa 1940



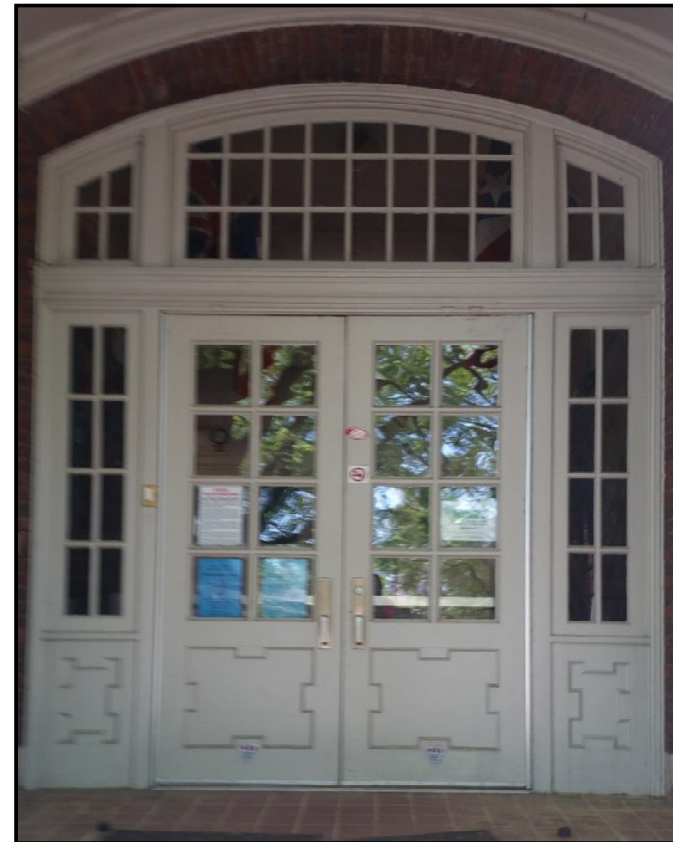
Wiley Elementary



Wiley Elementary – historical elements

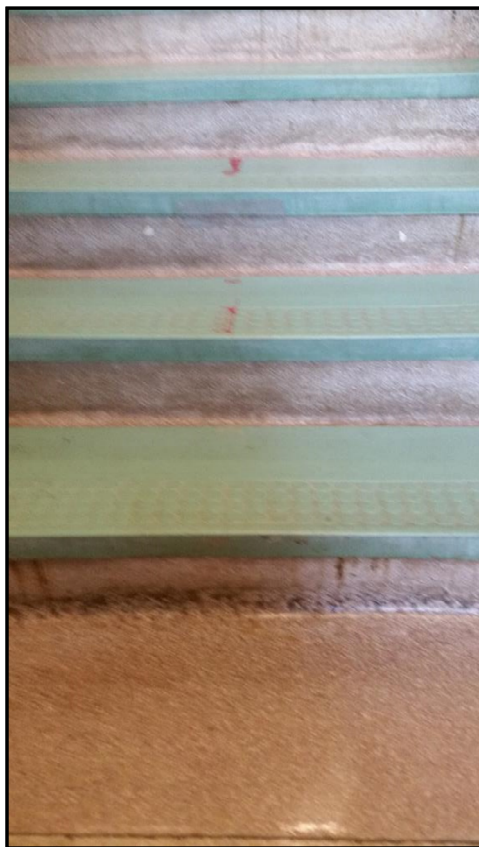


Glazed
white
terracotta



Original wood
front entry doors

Wiley Elementary – historical elements

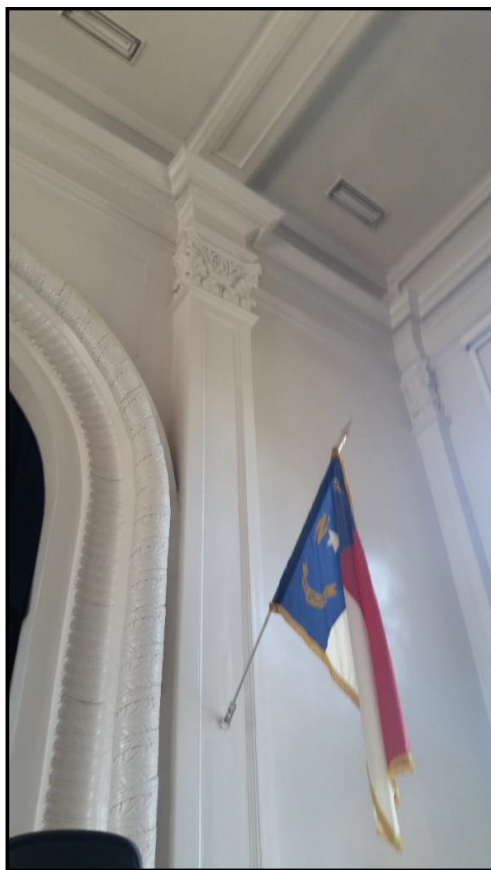


Worn terrazzo steps

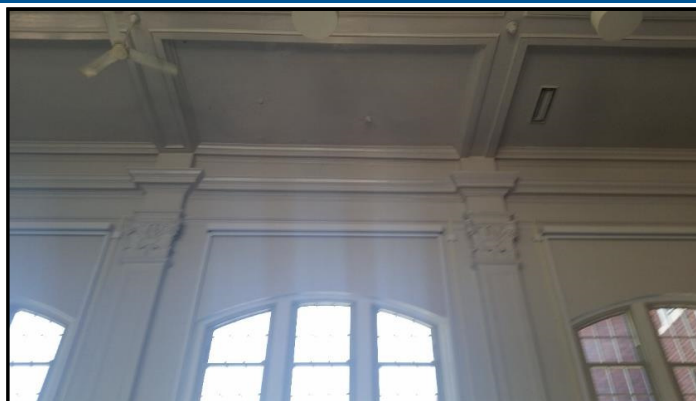


Terrazzo damage

Wiley Elementary – historical elements



Auditorium
woodwork detail

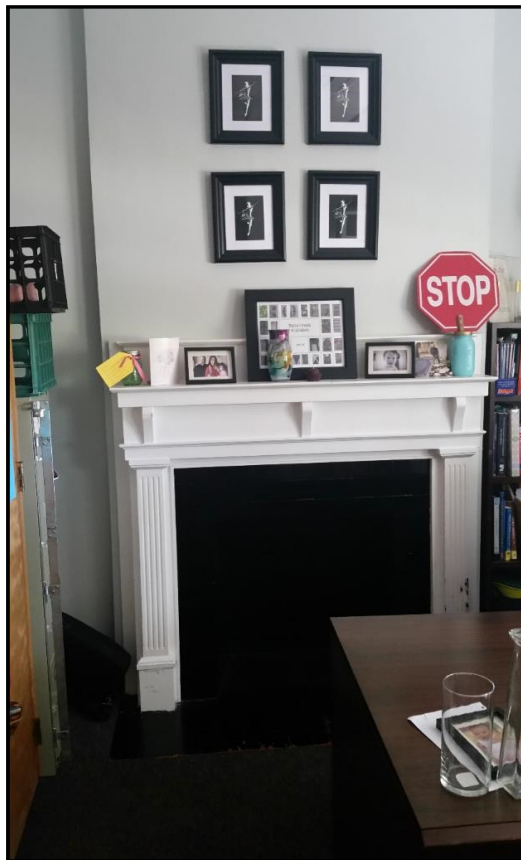


Column &
ceiling detail

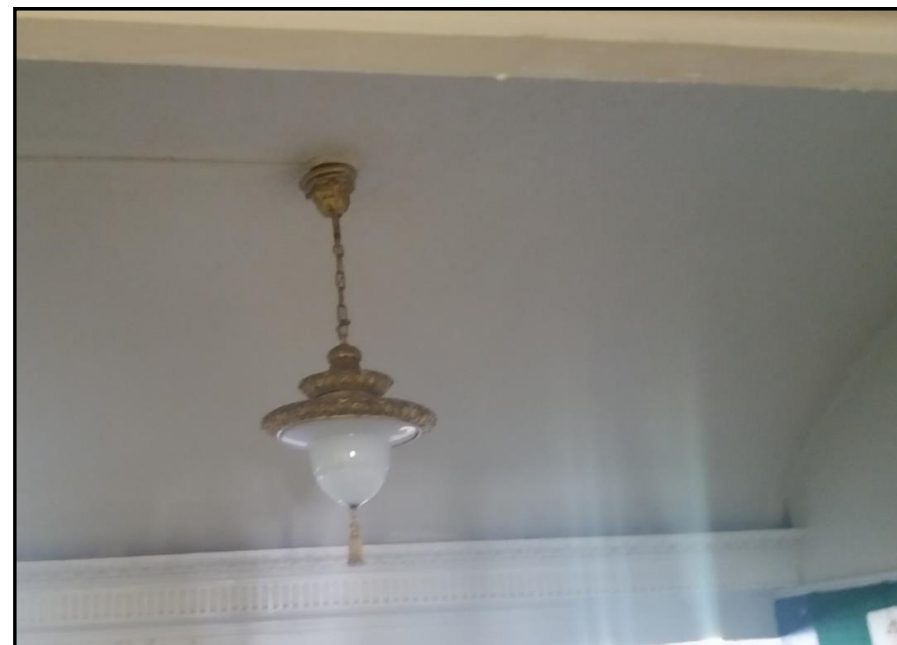
Proscenium
surround detail
at stage



Wiley Elementary – historical elements

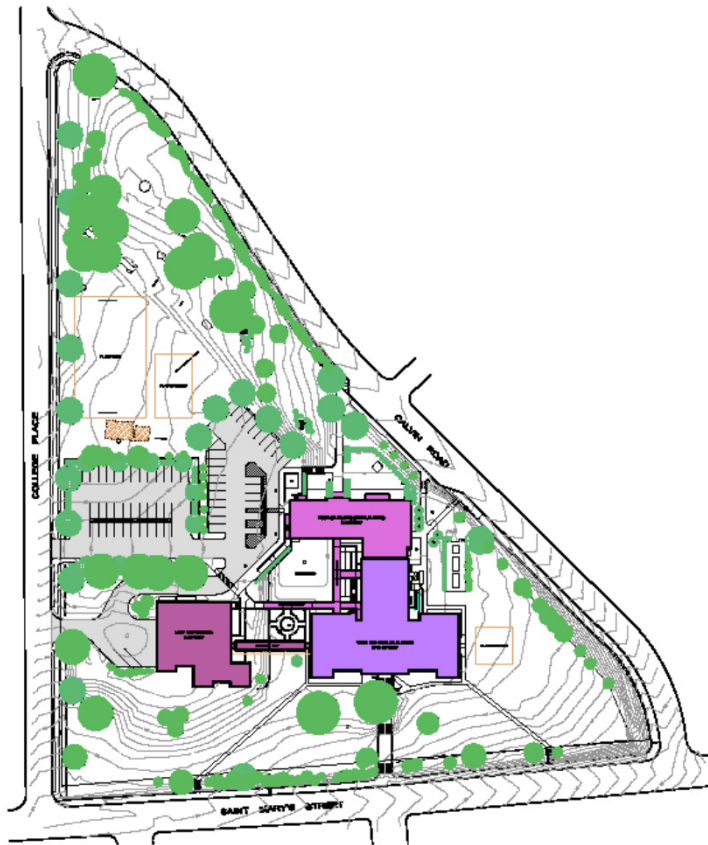


Fireplace in
Administration
office



Antique light fixtures in Auditorium

Wiley Elementary – existing site plan



Wiley Elementary – proposed site plan

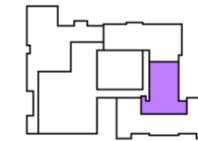
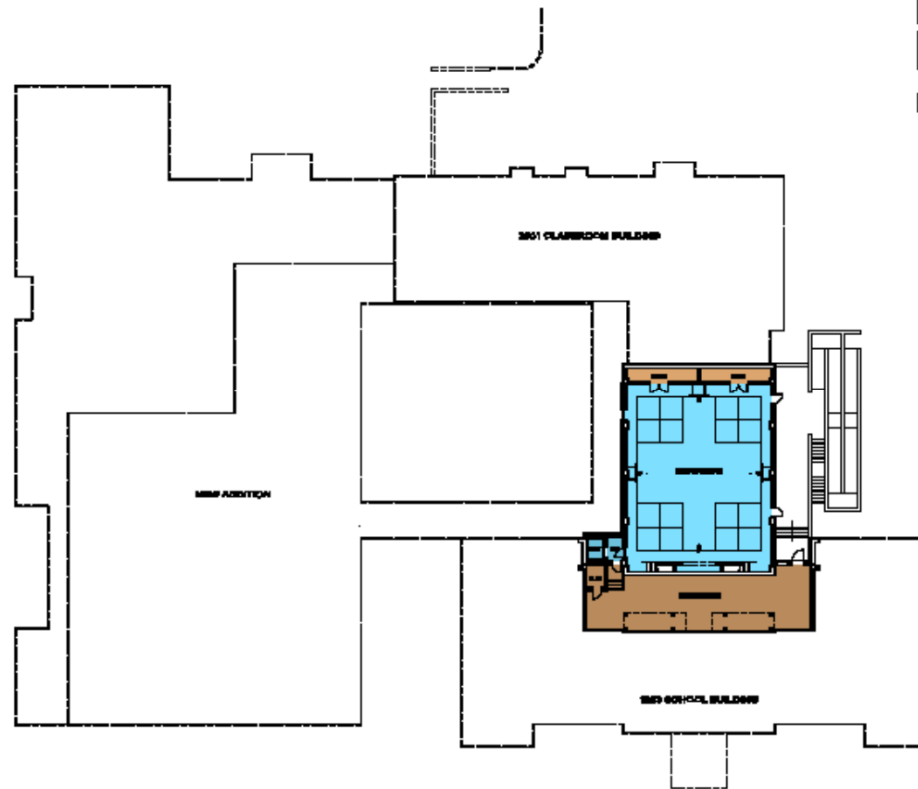
- Carpool entry is moved further away from intersection of St. Mary's Street and College Place.
- Carpool and service entries are separated.
- Natural areas and play areas will be visible from school building.
- Maintains the Water Tower Property – trees & stone walls, and adds play area adjacent to building.
- Provides additional on-site car queuing, and adds 12 parking spaces for a total of 74.
- Site Plan will require a variance from the City of Raleigh to allow for less parking than required.
- Structural retaining walls will be required.

ADDITIONS AND RENOVATIONS WILEY ELEMENTARY SCHOOL



Wiley Elementary – proposed basement level

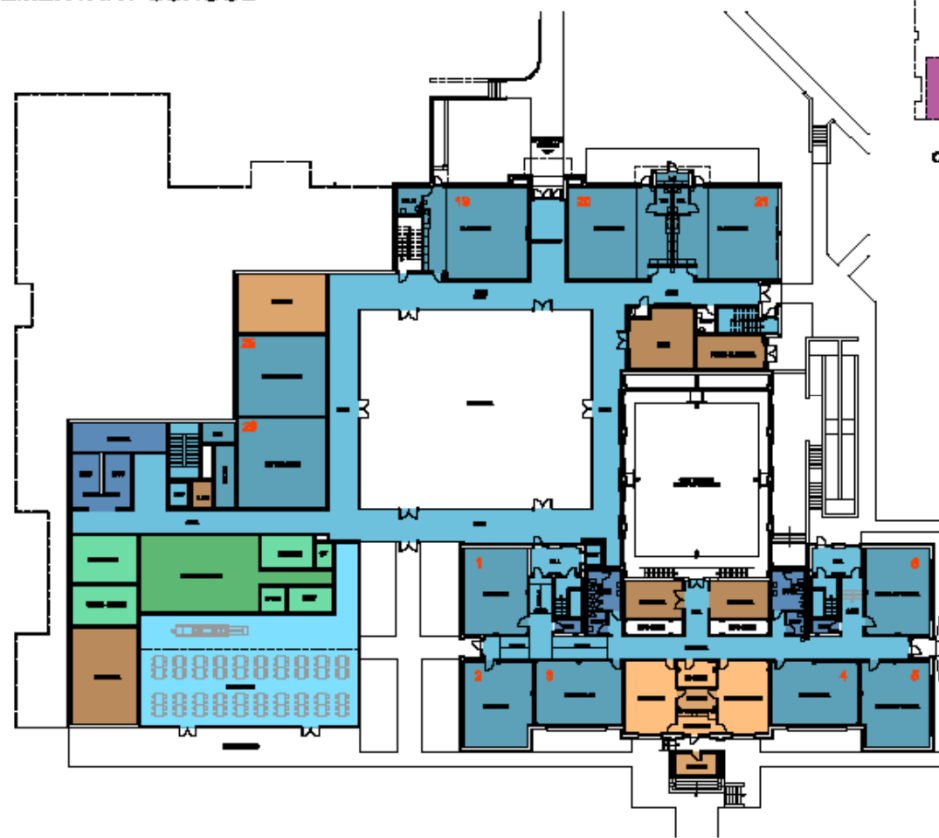
WILEY ELEMENTARY SCHOOL



CAMPUS KEY PLAN
T-10-2014

Wiley Elementary – proposed 1st floor

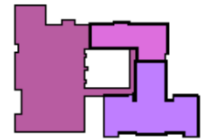
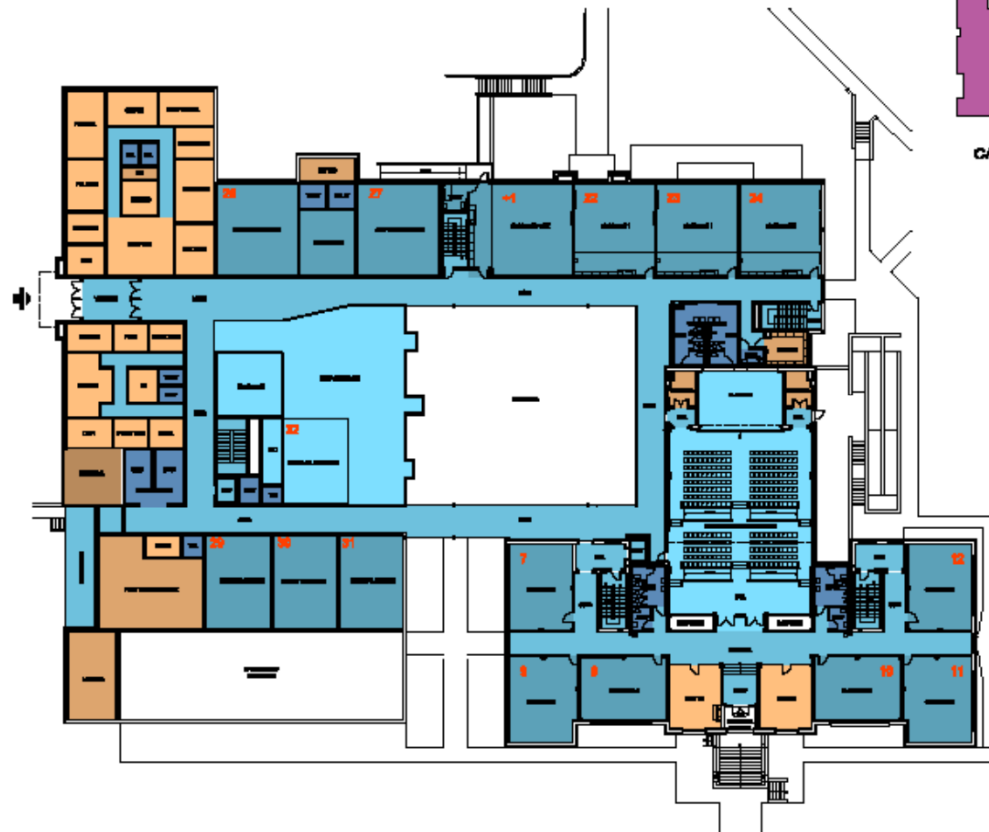
WILEY ELEMENTARY SCHOOL



CAMPUS KEY PLAN

Wiley Elementary – proposed 2nd floor

WILEY ELEMENTARY SCHOOL

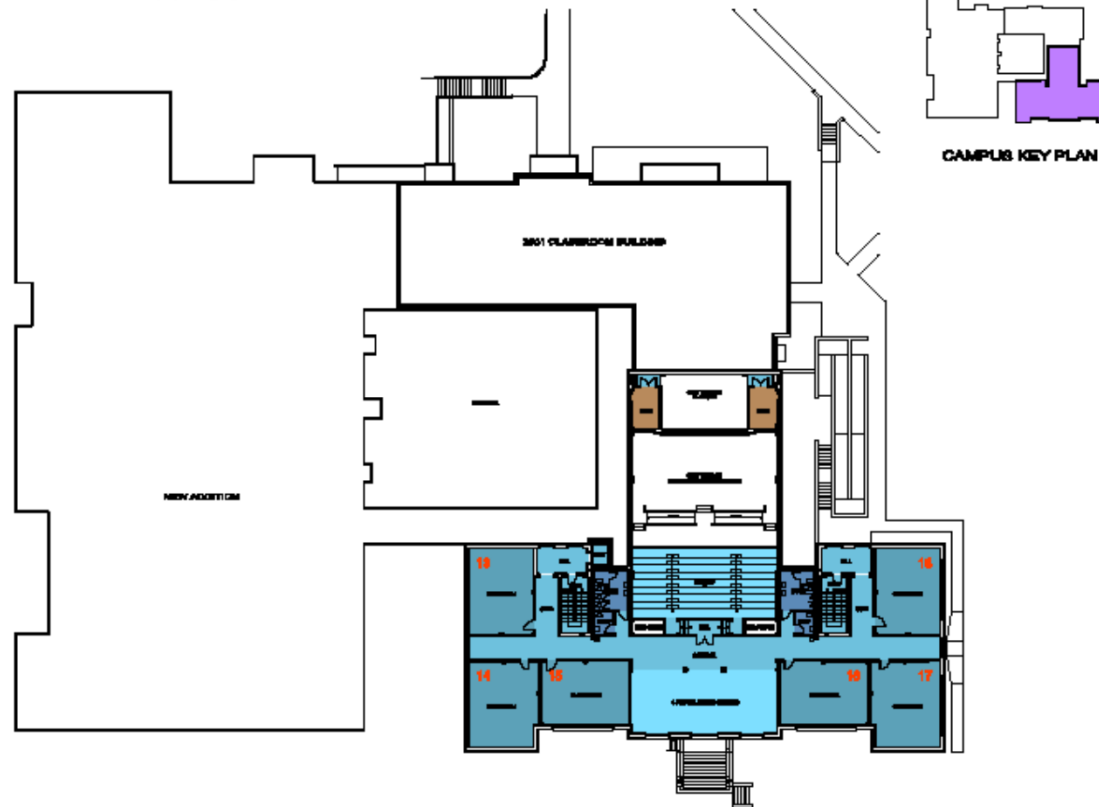


CAMPUS KEY PLAN

- Administration Suite and Student Support Services are close to the new, secured Front Entry.
- Dining and Media Center are centrally located to classrooms.
- Structures become “one building” with simplified interior circulation.
- Improves the courtyard space to be used as an Outdoor Learning Commons.

Wiley Elementary – proposed 3rd floor

WILEY ELEMENTARY SCHOOL



Wiley Elementary – swing space

- Swing space will be in the current Garner High 9th Grade Center (GH9), which is 6.5 miles from the existing Wiley site.
- Existing GH9, including the adjacent modular units, will be renovated to serve elementary students.
- Future plans for this swing space site include providing swing space for two more existing elementary schools following its use by Wiley, as well as the possibility to use it for Professional Development in the long-term.
- Initially, a limited scope of work was developed to provide swing space for Vandora Springs Elem at GH9. However, Vandora Springs is using the new Bryan Rd Elementary instead.
- Scope of work has been updated and expanded to meet current codes and to serve three elementary schools, over multiple years, instead of just one.
- Work includes, but is not limited to:
 - Updating technology to current elementary standard in all classrooms.
 - Convert band/chorus and dance/drama to Media Center.
 - Convert FACS lab to a Classroom and a Teachers' Lounge.
 - Convert three Science labs into 6 Classrooms.
 - Updating main lobby to provide standard security vestibule.
 - Providing site upgrades for carpool.
 - Providing outdoor play space and play equipment.
 - Interior and exterior signage upgrades.