

DRAFT 2

WCPSS ENROLLMENT PLAN, 2018-19

YEAR FOUR OF A MULTI-YEAR APPROACH TO GROWTH MANAGEMENT

Prepared by: Office of Student Assignment

Board of Education Work Session
October 17, 2017

Draft 2 – Feedback on Draft 1 Discussion/Recommendation

New Schools:		Page Draft 2	Page Draft 1
1.	Bryan Road ES Impacted Multiple ES Base Attendance Areas - Changes to Draft 1 Proposal	3-5	13-16
2.	Buckhorn Creek ES Impacted Lincoln Heights ES and Willow Springs ES Base Attendance Areas – Changes to Draft 1 Proposal	6-8	17-19
Operational Efficiency:			
1.	Adams ES - Increase Base Attendance Area - Draft 1 proposed changes removed from consideration	9	30
2.	East Cary MS - Increase Base Attendance Area - Draft 1 proposed changes removed from consideration	10	32
3.	East Cary MS, Lufkin Road MS, and Salem MS – Change Year-Round Application Area Draft 1 proposed changes removed from consideration	11	39
4.	Overcrowded Schools -Capped Schools Additional capped schools approved by the Board on 10/3/2017	12	33
Other:			
1.	K – 3 Class Size Legislation, 2018-19 Draft 1 proposed changes for Jeffreys Grove ES removed from consideration	13	42
2.	Grandfathering Siblings rules modified	14-15	44- 45
3.	General Public Information Session, Timeline Meeting Dates Update	16-17	47-48

New School – Bryan Road ES (2018-19) – Proposed Additional Changes to Draft 1

- Traditional Calendar
- Year-Round Application School: Timber Drive ES or Banks Road (by catchments)
- Capacity: 662

Discussion:

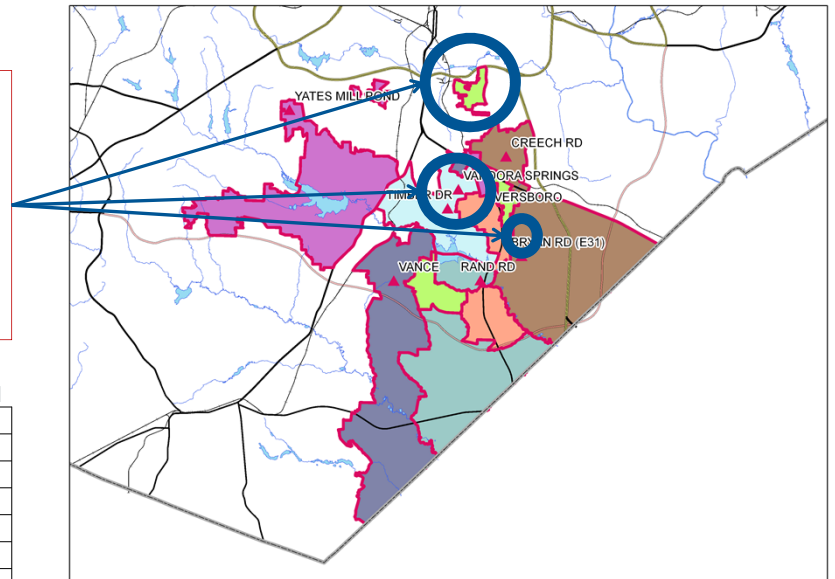
Proposed moves of northern part of Timber Drive ES Base to Rand Road ES Base, and Everwood Subdivision to Bryan Road ES. Proposed stability adjustment near Timber Drive ES location.

- Impacted Schools:

2016-17 Base School	Capacity	Capacity w/ Trailers	Calendar	Base %	2016-17 ADM	2016-17 Util	2016-17 Util w/ Trl
AVERSBORO ES	528	608	T	68%	580	110%	95%
CREECH ROAD ES	508	608	T	47%	590	116%	97%
RAND ROAD ES	454	614	Y4	72%	557	123%	91%
TIMBER DRIVE ES	500	680	Y4	56%	644	129%	95%
VANCE ES	306	426	Y4	59%	486	159%	114%
VANDORA SPRINGS ES	662	662	T	64%	540	82%	82%
YATES MILL POND ES	508	508	T	56%	614	121%	121%
	3466	4106			4011	116%	98%

- Utilization based on 2018-19 Capacity and 2016-17 Month-2 Average Daily Membership (ADM)
- Y – Year-Round Calendar, All Tracks (1-4)
- Y4 – Year-Round Calendar, Track 4 Only
- T – Traditional Calendar
- Base % = Percentage of WCPSS students within base attending the base school

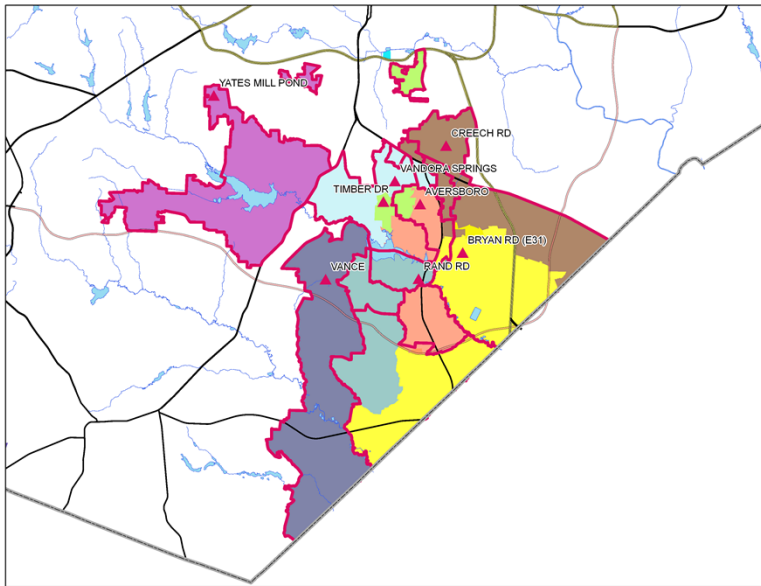
2017-18 Base Areas



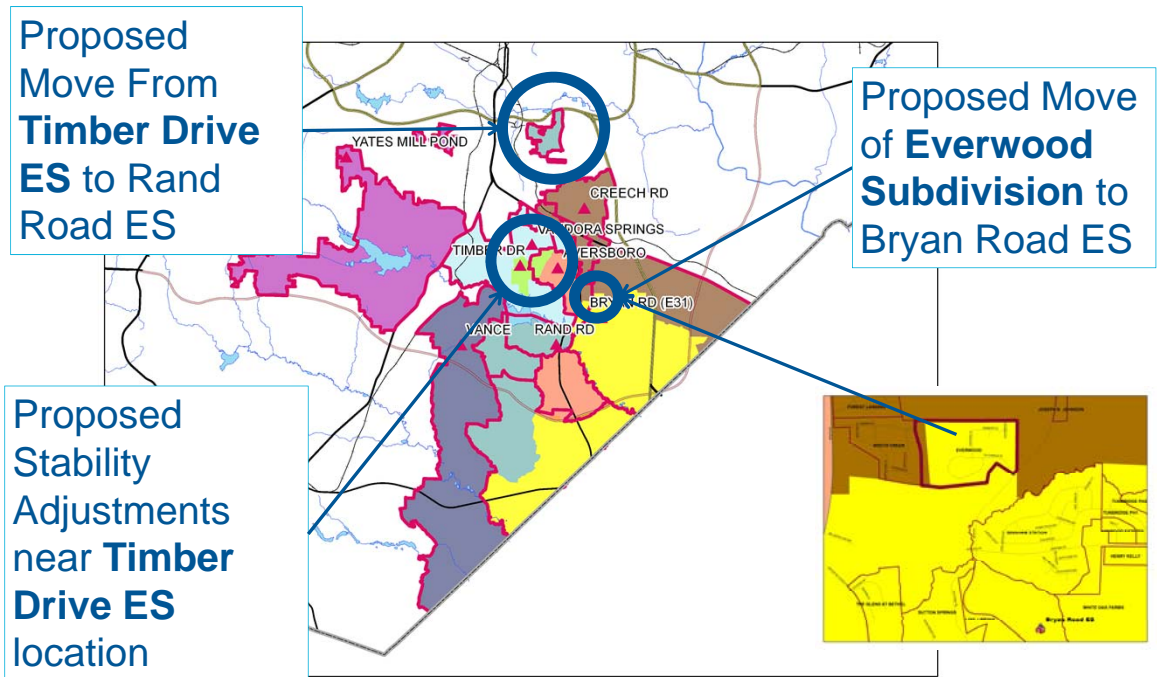
RED = 2017-18 ES Base Boundary

New School – Bryan Road ES (2018-19) – Proposed Additional Changes to Draft 1

Proposed 2018-19 Base Areas, DRAFT 1



Proposed 2018-19 Base Areas, DRAFT 2



RED = 2017-18 ES Base Boundary

Draft 2 – Discussion/Recommendation

New School – Bryan Road ES (2018-19) - Proposed Additional Changes to Draft 1

2016-17 Base School	Capacity	Capacity w/ Trailers	2018-19 Util	2018-19 Util w/ Trl	2020-21 Util	2020-21 Util w/ Trl	Res	Academic Proficiency (Grades 3-5)			Actual
								Base	Non-Base	Agg	
AVERSBORO ES	528	608	111%	97%	115%	100%	62%	57%	51%	54%	54%
CREECH ROAD ES	508	608	143%	119%	162%	136%	51%	39%	39%	39%	38%
RAND ROAD ES	454	614	136%	100%	142%	105%	65%	67%	71%	68%	70%
TIMBER DRIVE ES	500	680	131%	96%	134%	99%	41%	36%	59%	49%	49%
VANCE ES	306	426	178%	128%	194%	139%	65%	61%	50%	59%	59%
VANDORA SPRINGS ES	662	662	85%	85%	87%	87%	53%	51%	43%	47%	47%
YATES MILL POND ES	508	508	123%	123%	122%	122%	66%	58%	62%	59%	58%
BRYAN ROAD ES (E31)											
	3466	4106	125%	105%	131%	111%					

2018-19 Base School	Capacity	Capacity w/ Trailers	2018-19 Util	2018-19 Util w/ Trl	2020-21 Util	2020-21 Util w/ Trl	Res	Academic Proficiency (Grades 3-5)		
								Base	Non-Base	Agg
AVERSBORO ES	528	608	97%	84%	101%	88%	65%	60%	51%	55%
CREECH ROAD ES	508	608	131%	110%	144%	120%	43%	39%	39%	39%
RAND ROAD ES	454	614	134%	99%	137%	101%	54%	53%	71%	59%
TIMBER DRIVE ES	500	680	98%	72%	97%	71%	59%	53%	59%	58%
VANCE ES	306	426	169%	121%	185%	133%	68%	64%	50%	62%
VANDORA SPRINGS ES	662	662	94%	94%	96%	96%	50%	47%	43%	45%
YATES MILL POND ES	508	508	116%	116%	114%	114%	67%	58%	62%	59%
BRYAN ROAD ES (E31)	662	662	64%	64%	76%	76%	61%	55%	n/a	n/a
	4128		107%	93%	113%	98%				

Recommendation: Change northern part of Timber Drive ES Base to Rand Road ES Base, move Everwood Subdivision to Bryan Road ES Base, and make stability adjustment near Timber Drive ES location.

PROFICIENCY LEGEND:

Res = Mean proficiency of students residing in base

Base = Mean proficiency of base students in base

Non-Base = Mean proficiency of non-base students

Agg = Aggregate mean proficiency of base and non-base students

Actual = Reading/English proficiency by school

New School – Buckhorn Creek ES (2018-19) – Proposed Additional Changes to Draft 1

- Traditional Calendar
- Year-Round Application School: Herbert Akins Rd ES / Holly Grove ES (by catchments)
- Capacity: 662

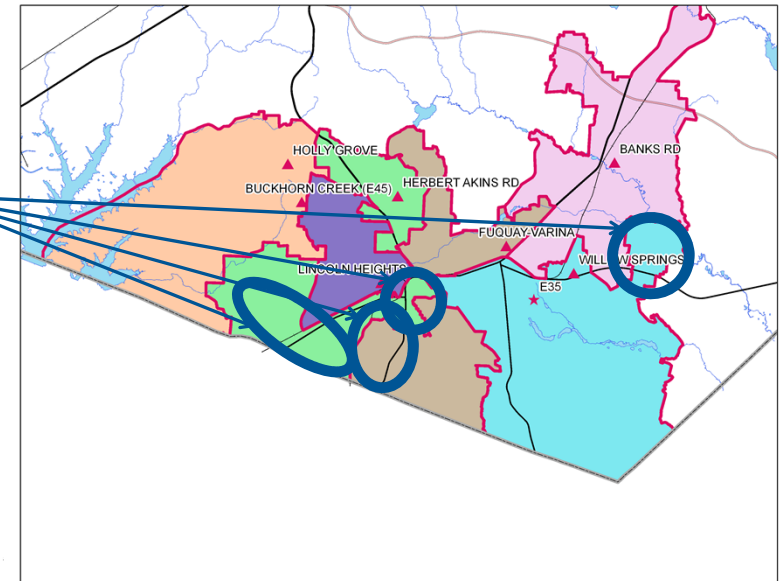
Discussion:
 Change to Draft 1 Proposed Lincoln Heights ES Base Area, and move of portion of Willow Springs ES Base to Banks Road ES.

- Impacted Schools:

2016-17 Base School	Capacity	Capacity w/ Trailers	Calendar	Base %	2016-17 ADM	2016-17 Util	2016-17 Util w/ Trl
HERBERT AKINS RD ES	1032	1032	Y	70%	1044	101%	101%
FUQUAY-VARINA ES	506	806	T	64%	832	164%	103%
HOLLY GROVE ES	902	962	Y	85%	1143	127%	119%
LINCOLN HEIGHTS ES	528	528	T	39%	462	88%	88%
WILLOW SPRINGS ES	515	835	Y	78%	1070	208%	128%
	3483	4163			4551	131%	109%

- Utilization based on 2018-19 Capacity and 2016-17 Month-2 Average Daily Membership (ADM)
- Y – Year-Round Calendar, All Tracks (1-4)
- Y4 – Year-Round Calendar, Track 4 Only
- T – Traditional Calendar
- Base % = Percentage of WCPSS students within base attending the base school

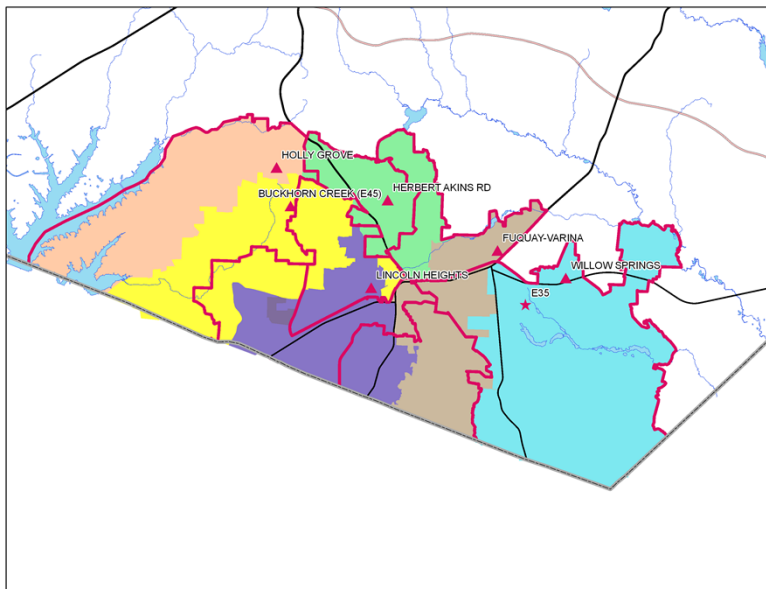
2017-18 Base Areas



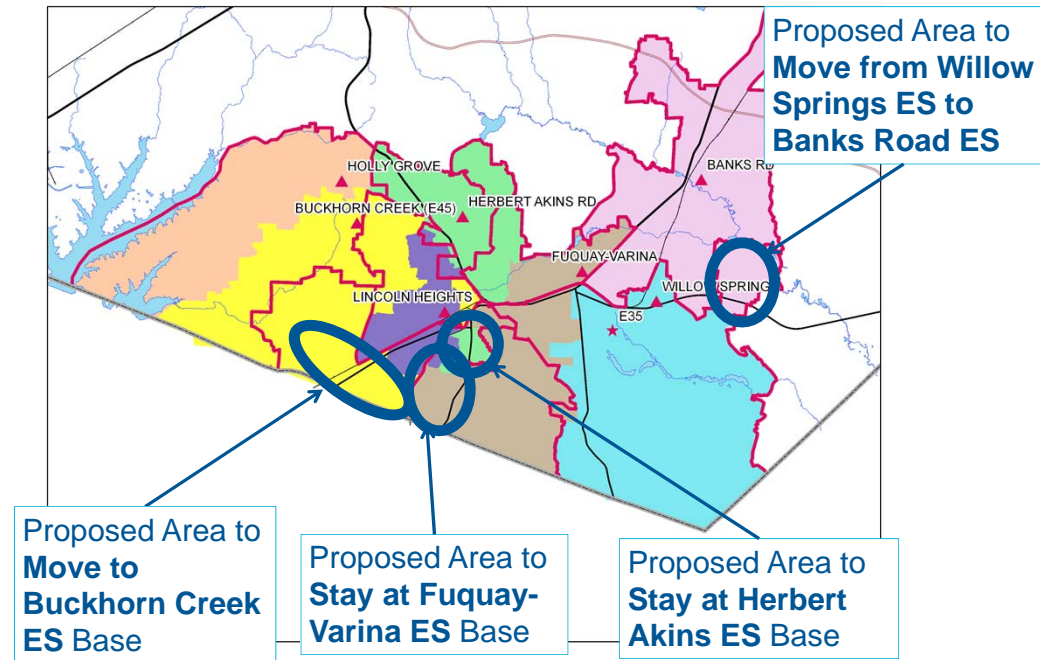
RED = 2017-18 ES Base Boundary

Draft 2 – Discussion/Recommendation New School – Buckhorn Creek ES (2018-19) – Proposed Additional Changes to Draft 1

Proposed 2018-19 Base Areas, DRAFT 1



Proposed 2018-19 Base Areas, DRAFT 2



RED = 2017-18 ES Base Boundary

New School – Buckhorn Creek ES (2018-19) – Proposed Additional Changes to Draft 1

2016-17 Base School	Capacity	Capacity w/ Trailers	2018-19 Util	2018-19 Util w/ Trl	2020-21 Util	2020-21 Util w/ Trl	Res	Academic Proficiency (Grades 3-5)			
								Base	Non-Base	Agg	Actual
HERBERT AKINS RD ES	1032	1032	111%	111%	122%	122%	69%	69%	78%	72%	73%
BANKS ROAD ES	980	980	82%	82%	92%	92%	64%	68%	77%	70%	70%
FUQUAY-VARINA ES	506	806	184%	115%	193%	121%	66%	61%	68%	63%	64%
HOLLY GROVE ES	902	962	147%	138%	162%	152%	83%	84%	85%	84%	85%
LINCOLN HEIGHTS ES	528	528	96%	96%	102%	102%	61%	36%	36%	36%	37%
WILLOW SPRINGS ES	515	835	235%	145%	254%	156%	75%	80%	86%	81%	82%
BUCKHORN CREEK ES (E45)											
	4463	5143	133%	115%	144%	125%					

2018-19 Base School	Capacity	Capacity w/ Trailers	2018-19 Util	2018-19 Util w/ Trl	2020-21 Util	2020-21 Util w/ Trl	Res	Academic Proficiency (Grades 3-5)		
								Base	Non-Base	Agg
HERBERT AKINS RD ES	1032	1032	109%	109%	121%	121%	69%	66%	78%	71%
BANKS ROAD ES	980	980	93%	93%	103%	103%	66%	69%	77%	71%
FUQUAY-VARINA ES	506	806	168%	105%	168%	106%	71%	68%	68%	68%
HOLLY GROVE ES	902	962	120%	113%	132%	123%	82%	84%	85%	84%
LINCOLN HEIGHTS ES	528	528	135%	135%	143%	143%	65%	66%	36%	50%
WILLOW SPRINGS ES	515	835	184%	114%	206%	127%	74%	79%	86%	81%
BUCKHORN CREEK ES (E45)	662	662	81%	n/a	89%	n/a	70%	67%	n/a	n/a
	5125	5805	120%	106%	131%	115%				

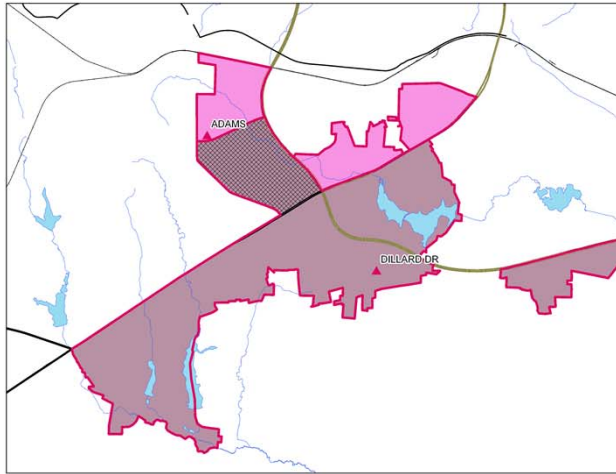
Recommendation: Change Proposed Draft 1 areas of Lincoln Heights ES Base Area to Buckhorn Creek ES, Herbert Akins ES and Fuquay-Varina ES Base Areas. Move portion of Willow Springs ES to Banks Road ES.

PROFICIENCY LEGEND:

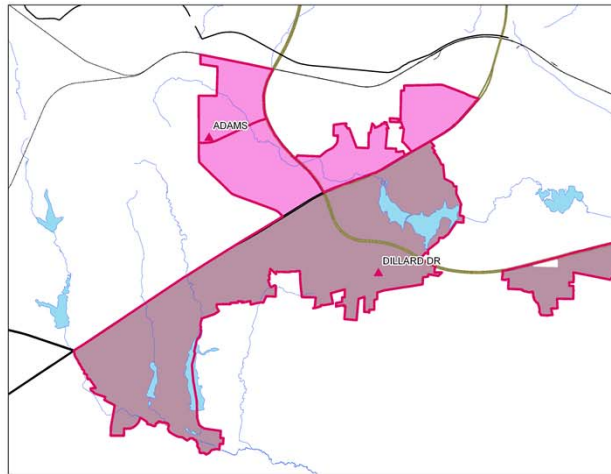
Res = Mean proficiency of students residing in base
Base = Mean proficiency of base students in base
Non-Base = Mean proficiency of non-base students
Agg = Aggregate mean proficiency of base and non-base students
Actual = Reading/English proficiency by school

Operational Efficiency a) Increase Base Attendance Area – Adams ES

Impacted Areas



Proposed 2018-19 Base Areas



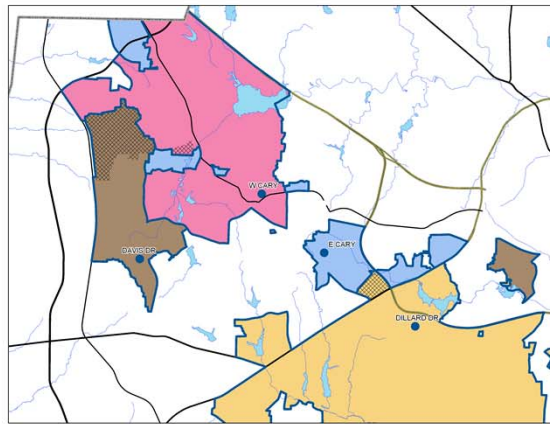
Recommendation:
 Remove Draft 1 proposed increase of Adams ES Base Attendance Area from consideration.

2016-17 Base School	Capacity	Capacity w/ Trailers	2018-19		2020-21		Res	Academic Proficiency (Grades 3-5)			Actual
			Util	Util w/ Trl	Util	Util w/ Trl		Base	Non-Base	Agg	
ADAMS ES	477	637	144%	108%	143%	107%	43%	37%	74%	64%	64%
DILLARD DRIVE ES	481	681	144%	101%	139%	98%	65%	53%	59%	55%	55%
	958	1318	144%	105%	141%	103%					

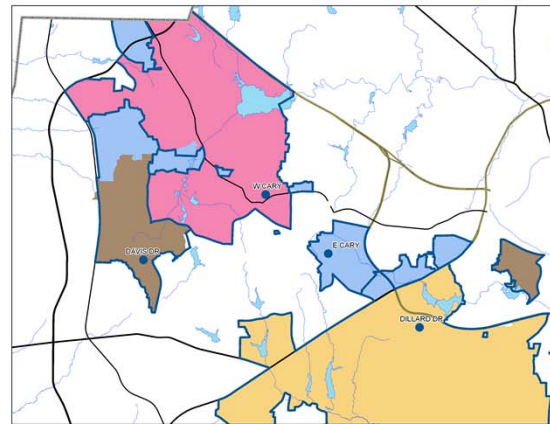
2018-19 Base School	Capacity	Capacity w/ Trailers	2018-19		2020-21		Res	Academic Proficiency (Grades 3-5)		
			Util	Util w/ Trl	Util	Util w/ Trl		Base	Non-Base	Agg
ADAMS ES	477	637	185%	139%	183%	137%	50%	43%	74%	62%
DILLARD DRIVE ES	481	681	113%	80%	110%	78%	66%	54%	59%	56%
	958	1318	149%	108%	146%	106%				

Operational Efficiency a) Increase Base Attendance Area (cont.) – East Cary MS

Impacted Areas



Proposed 2018-19 Base Areas



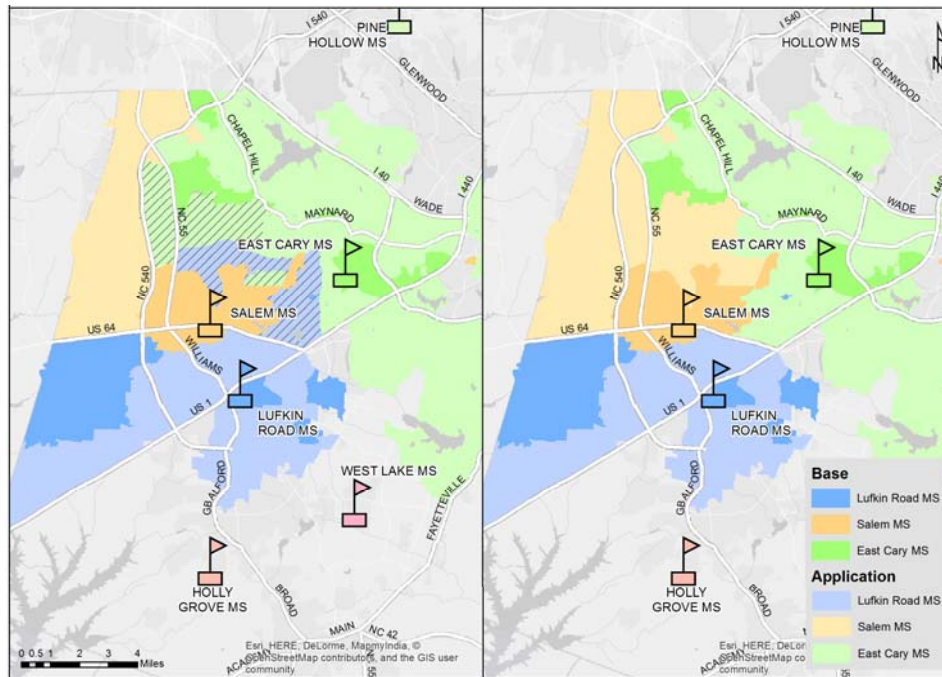
Recommendation:
 Remove Draft 1 proposed increase of East Cary MS Base Attendance Area from consideration.

Base School	2016-17		Capacity w/ Trailers				Academic Proficiency (Grades 6-8)				
	Capacity	Util	2018-19 Util	2018-19 Util w/ Trl	2020-21 Util	2020-21 Util w/ Trl	Res	Base	Non-Base	Agg	Actual
DAVIS DRIVE MS	944	1230	130%	99%	114%	87%	87%	87%	81%	87%	87%
DILLARD DRIVE MS	1126	1282	102%	89%	102%	90%	71%	60%	54%	58%	58%
EAST CARY MS	1290	1290	81%	81%	81%	81%	63%	61%	82%	74%	74%
WEST CARY MS	952	1108	99%	85%	105%	90%	79%	72%	70%	72%	72%
	4312	4910	101%	89%	99%	87%					

Base School	2018-19		Capacity w/ Trailers				Academic Proficiency (Grades 6-8)				
	Capacity	Trailers	2018-19 Util	2018-19 Util w/ Trl	2020-21 Util	2020-21 Util w/ Trl	Res	Base	Non-Base	Agg	Actual
DAVIS DRIVE MS	944	1230	101%	77%	90%	69%	86%	86%	81%	86%	86%
DILLARD DRIVE MS	1126	1282	96%	84%	97%	85%	72%	61%	54%	59%	59%
EAST CARY MS	1290	1290	112%	112%	110%	110%	72%	73%	82%	77%	77%
WEST CARY MS	952	1108	99%	85%	104%	90%	79%	72%	70%	72%	72%
	4312	4910	102%	90%	101%	88%					

Draft 2 – Discussion/Recommendation

Operational Efficiency - c) Proposed Changes in Year-Round Application Areas for East Cary MS, Lufkin Road MS, and Salem MS (2018-2019)



Current 2017-2018
Base and Application
Areas

Proposed 2018-2019
Base and Application
Areas

Recommendation:
Remove Draft 1 proposed changes in Year-Round Application Areas for East Cary MS, Lufkin Road MS, and Salem MS from consideration.

Elementary Schools

Baileywick Rd ES
Carpenter ES
Combs ES
Harris Creek ES
Olive Chapel ES
Sycamore Creek ES
Vance ES
Willow Springs ES

List of Additional Capped Schools in 2017-18 (8 schools)

Approved by the Board of Education on 10/3/2017,
due to K - 3 Class Size Legislation

Overcrowded Schools: Existing Capped Schools in 2017-18 (10 schools)

Elementary Schools	Middle Schools	High Schools
Cedar Fork ES	Apex MS	Enloe HS
Fuquay-Varina ES	Mills Park MS	Fuquay-Varina HS
Holly Grove ES		Heritage HS
Mills Park ES		Panther Creek HS

These capped school base attendance areas will be impacted by new school openings in 2018-19.

These capped school base attendance areas will be impacted by new school openings in 2019-20.

Draft 2 – Discussion/Recommendation

K – 3 Class Size Legislation, 2018-19 - Changes to Draft 1

School	Can the school accommodate base attending base?	Growing Residents?	Growing Base at Base?	Magnet Students	Magnet %	Calendar Students	Calendar %	Calendar Totals Base-Students Attending	# of Non-base Transfers/in how many schools	Transfer %	New Construction relief?	Proposed Strategies to comply with legislative class size mandate
Fuquay-Varina Elementary	Yes	~ 31/yr				162	20%	Herbert Akins-38 Banks Road-33 Ballentine-22 Willow Springs-70	21/9		Buckhorn Creek 2018-19 E35 2020-21	<ul style="list-style-type: none"> Continue Enrollment Cap – Overflow to Lincoln Heights ES Closed to new transfers Buckhorn Creek ES will provide significant relief in 2018-19
Harris Creek Elementary	Yes	~ 13/yr				17	2%	River Bend-17	42/20	4%	YMCA 2019-20	<ul style="list-style-type: none"> Continue Enrollment Cap – Overflow to River Bend ES Closed to new transfers YMCA School in 2019-20 will provide some relief Closed to new transfers Continue to monitor
Highcroft Elementary	Yes	~ 68/yr							75/23	8%		<ul style="list-style-type: none"> Closed to new transfers Continue to monitor
Holly Grove Elementary	Yes	~ 36/yr							99/17	9%	Buckhorn Creek 2018-19	<ul style="list-style-type: none"> Continue Enrollment Cap – Overflow to Herbert Akins ES Closed to new transfers Buckhorn Creek ES will provide significant relief in 2018-19
Hortons Creek Elementary	Yes	~ 44/yr	Yes			83	10%	Alston Ridge-83	10/9	1%		<ul style="list-style-type: none"> Closed to new transfers Continue to monitor
Hunter Elementary	Yes		Yes	466	66%				45/21	6%		<ul style="list-style-type: none"> Closed to new transfers Manage magnet applications
Jeffreys Grove Elementary	Yes	~ 4/yr	Yes	85	15%	14	3%	Pleasant Union-14	122/34	22%	Barton Pond 2021-22	<ul style="list-style-type: none"> Non-Renew existing transfer students Closed to new transfers
Joyner Elementary	Yes			261	39%				70/28	10%		<ul style="list-style-type: none"> Closed to new transfers Manage applications
Kingswood Elementary	Yes	~ 6/yr		85	22%				43/21	11%		<ul style="list-style-type: none"> Closed to new transfers Manage applications
Mills Park Elementary	Yes	~ 40/yr							91/17	10%	Parkside 2019-20	<ul style="list-style-type: none"> Continue Enrollment Cap – Overflow to White Oak ES Closed to new transfers

Recommendation:
 Remove Draft 1 proposed change for Jeffreys Grove ES from consideration.

Grandfathering - Changes to Draft 1

Elementary School and Middle School Students

- To utilize new school capacity and meet State mandated class-size reduction for grades K-3:
 - Elementary school and middle school students who experience an assignment change as a result of this enrollment proposal, and are rising into **grades 5 and 8**, are eligible to request a **transfer** to “grandfather” at their current assignment. These requests will be approved.
 - Grandfather requests can be made through the School Transfer process and grandfathered students will **not receive district transportation**.
 - **Siblings of eligible grandfathered students will be eligible to grandfather for one (1) year only with their rising 5th grade, or 8th grade sibling.**

Grandfathering (cont.) - Changes to Draft 1

High School Students

Students who experience an assignment change as a result of this proposal

- From **an existing school to an existing school**, all current students in 9, 10, and 11 grades are eligible to request a **transfer** to “grandfather” at their current assignment. These requests will be approved.
 - Students who request to grandfather are **transfer** students and **no transportation will be provided**.
 - **Siblings of “grandfathered” students are eligible to grandfather.**
- From **existing school to a new school**:

South Garner High will open with grades 9 and 10 only for the 2018-19 school year. Any student rising into grade 11 or 12 living in the base attendance area of South Garner High will continue at their current high school with their current level of transportation. 9th and 10th grade students are not eligible to “grandfather” unless they have an 11th or 12th grade sibling.

 - Siblings of “grandfathered” students can request a **transfer** to attend the same school with their sibling. These requests will be approved.
 - Students who request to grandfather are **transfer** students.

Community Feedback - Changes to Draft 1

- We notified parents at potentially impacted schools about the upcoming discussion.
- An online feedback forum will launch on September 19, 2017 after the board presentation.
- We will host information sessions at the following BAC meetings:
 - District 1 - September 25, 2017
 - District 2 - **October 11**, 2017
 - District 5 - September 28, 2017
 - District 6 - September 22, 2017
 - District 7 - October 11, 2017
 - District 8 - October 2, 2017
- We will host general public information sessions on
 - **October 6, 2017** - Holly Grove MS, and
 - October 9, 2017 - South Garner HS.
- More information, including links to the address look-up tool and the online feedback site, can be found at wcpss.net/enrollmentproposal



***Changes**

Timeline of the Enrollment Process - Changes to Draft 1

DATES	ACTIONS
May 16, 2017	BoE Work Session – review/discuss needs for 2018-19 Enrollment plan, seek board input on direction
September 19, 2017	BoE Work Session – staff presents Draft 1 of the 2018-19 enrollment plan; begin feedback process through online forums
September/October 2017	<p>BoE Advisory Committee Meetings – staff presents Draft 1; solicits feedback:</p> <p>District 1 - September 25, District 2 - October 11, District 5 - September 28, District 6 - September 22, District 7 - October 11, District 8 - October 2</p> <p>General Public Information Sessions on:</p> <p>October 6 - Holly Grove MS, and October 9 - South Garner HS</p>
October 17, 2017	BoE Work Session – staff presents Draft 2 of the enrollment plan; continue to solicit feedback through online forums
November, 2017	Public Hearing
	BoE Work Session
	BoE approval of the 2018-19 Enrollment Plan

*Changes