

DRAFT 3

WCPSS ENROLLMENT PLAN, 2018-19

YEAR FOUR OF A MULTI-YEAR APPROACH TO GROWTH MANAGEMENT

Prepared by: Office of Student Assignment

Board of Education Work Session
November 7, 2017

A. New Schools:

Buckhorn Creek ES

3 -4

B. Calendar Feeder Pattern Alignments:

Changes in Elementary to Middle School Assignments

Option 1

5 -10

Option 2

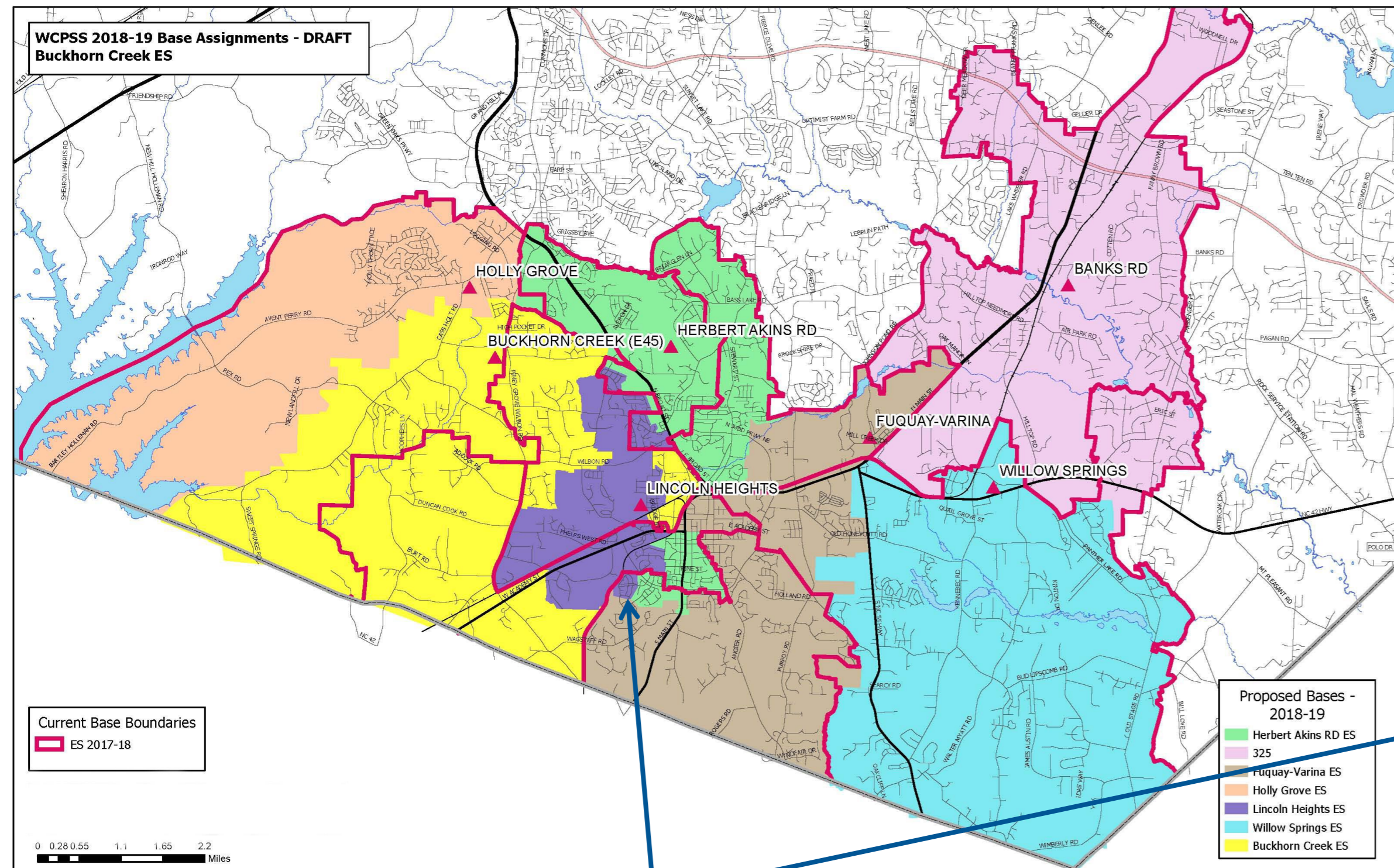
11-13

C. Timeline

14

A. New School – Buckhorn Creek ES (2018-19) – Proposed Changes to Draft 2

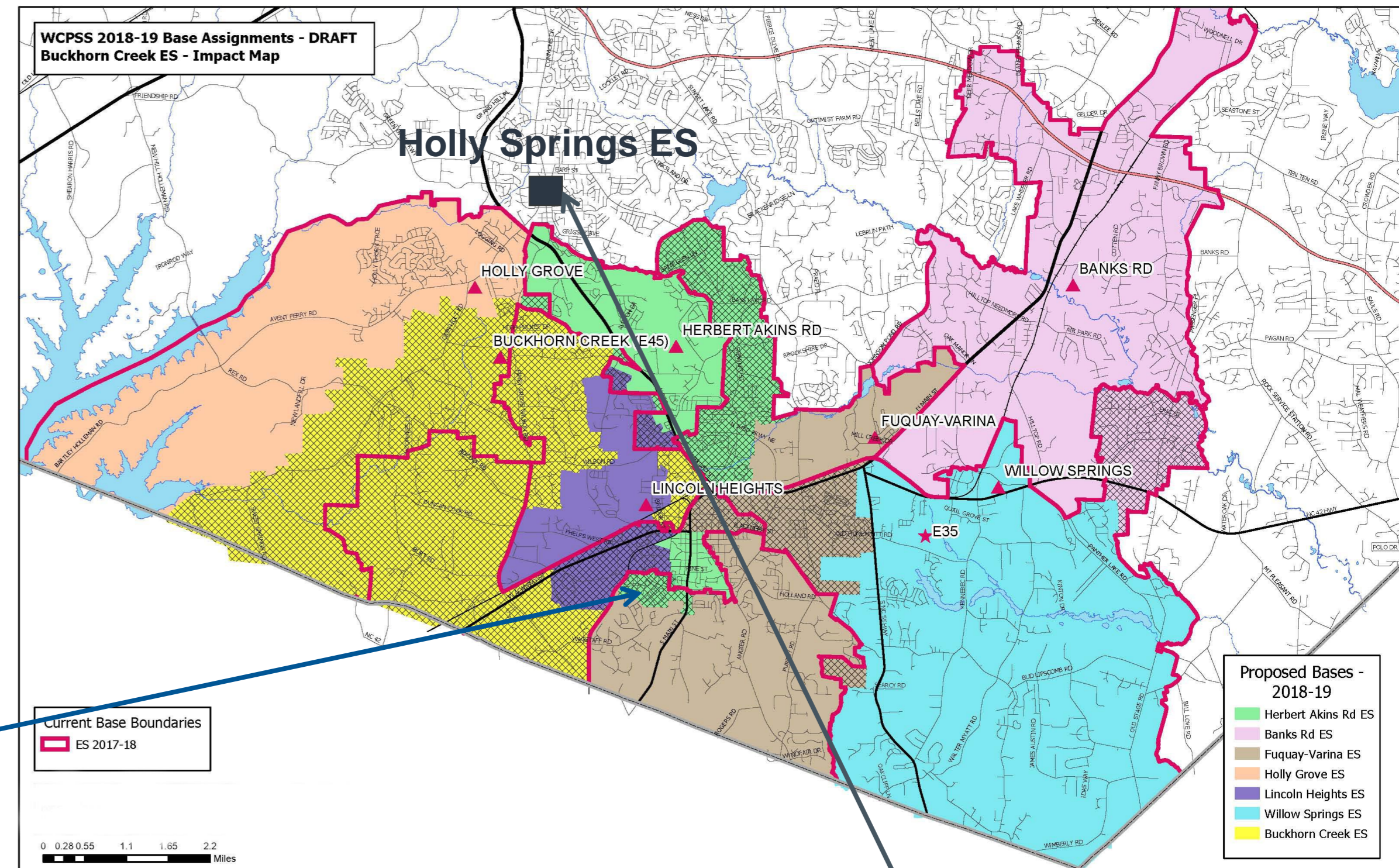
Proposed 2018-19 Base Areas, DRAFT 2



Discussion 1 - Operational Efficiency

Proposed to move Parker Pointe Subdivision from Lincoln Heights ES to Herbert Akins ES Base

Proposed 2018-19 Base Areas, DRAFT 3



Discussion 2 - Year-Round Application School:

Proposed to add Holly Springs ES in addition to Holly Grove ES for Buckhorn Creek ES families currently attending Holly Grove ES

A. New School – Buckhorn Creek ES (2018-19) – Proposed Changes to Draft 2 (cont.)

2016-17 Base School	Capacity	Capacity w/ Trailers	2018-19 Util	2018-19 Util w/ Trl	2020-21 Util	2020-21 Util w/ Trl	Res	Academic Proficiency (Grades 3-5)			
								Base	Non-Base	Agg	Actual
HERBERT AKINS RD ES	1032	1032	111%	111%	122%	122%	69%	69%	78%	72%	73%
BANKS ROAD ES	980	980	82%	82%	92%	92%	64%	68%	77%	70%	70%
FUQUAY-VARINA ES	506	806	184%	115%	193%	121%	66%	61%	68%	63%	64%
HOLLY GROVE ES	902	962	147%	138%	162%	152%	83%	84%	85%	84%	85%
LINCOLN HEIGHTS ES	528	528	96%	96%	102%	102%	61%	36%	36%	36%	37%
WILLOW SPRINGS ES	515	835	235%	145%	254%	156%	75%	80%	86%	81%	82%
BUCKHORN CREEK ES (E45)											
	4463	5143	133%	115%	144%	125%					

2018-19 Base School	Capacity	Capacity w/ Trailers	2018-19 Util	2018-19 Util w/ Trl	2020-21 Util	2020-21 Util w/ Trl	Res	Academic Proficiency (Grades 3-5)		
								Base	Non-Base	Agg
HERBERT AKINS RD ES	1032	1032	114%	114%	125%	125%	69%	67%	78%	71%
BANKS ROAD ES	980	980	93%	93%	103%	103%	66%	69%	77%	71%
FUQUAY-VARINA ES	506	806	164%	103%	165%	103%	71%	68%	68%	68%
HOLLY GROVE ES	902	962	120%	113%	132%	123%	82%	84%	85%	84%
LINCOLN HEIGHTS ES	528	528	121%	121%	129%	129%	64%	64%	36%	47%
WILLOW SPRINGS ES	515	835	184%	114%	206%	127%	74%	79%	86%	81%
BUCKHORN CREEK ES (E45)	662	662	84%	n/a	92%	n/a	70%	67%	n/a	n/a
	5125	5805	120%	106%	130%	115%				

PROFICIENCY LEGEND:

Res = Mean proficiency of students residing in base

Base = Mean proficiency of base students in base

Non-Base = Mean proficiency of non-base students

Agg = Aggregate mean proficiency of base and non-base students

Actual = Reading/English proficiency by school

B. Calendar Feeder Pattern Alignments — Draft 3 Proposal

Option 1: Proposed Changes in Elementary to Middle School Base Assignments

1. Buckhorn Creek ES Base Attendance Area

- Proposed changes to Holly Grove MS, Holly Ridge MS and Fuquay-Varina MS

2. Herbert Akins ES Base Attendance Area

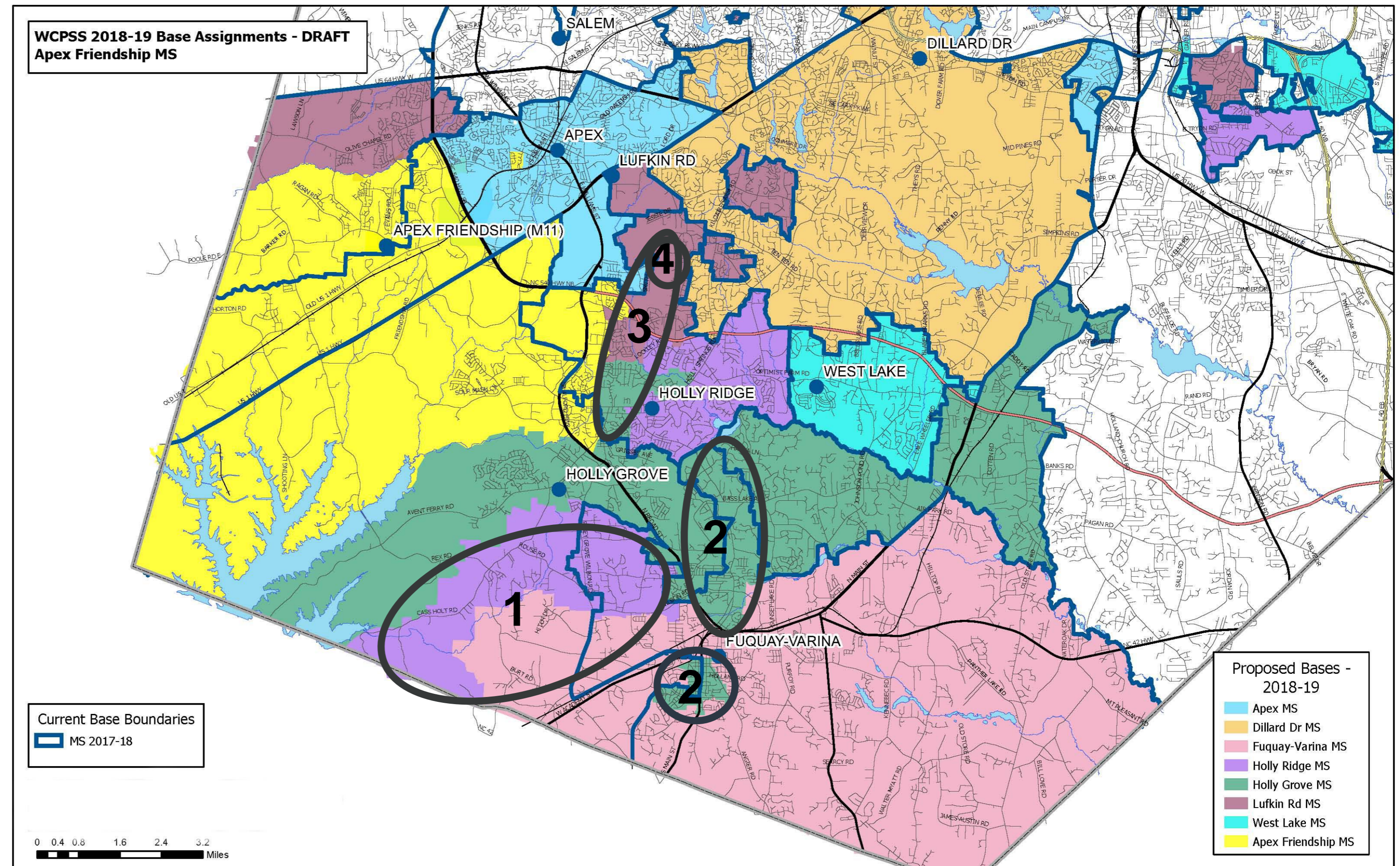
- Proposed changes to Holly Grove MS and Fuquay-Varina MS

3. Holly Springs ES Base Attendance Area

- Proposed changes to Holly Ridge MS, Lufkin Road MS and Holly Grove MS

4. Middle Creek ES Base Attendance Area

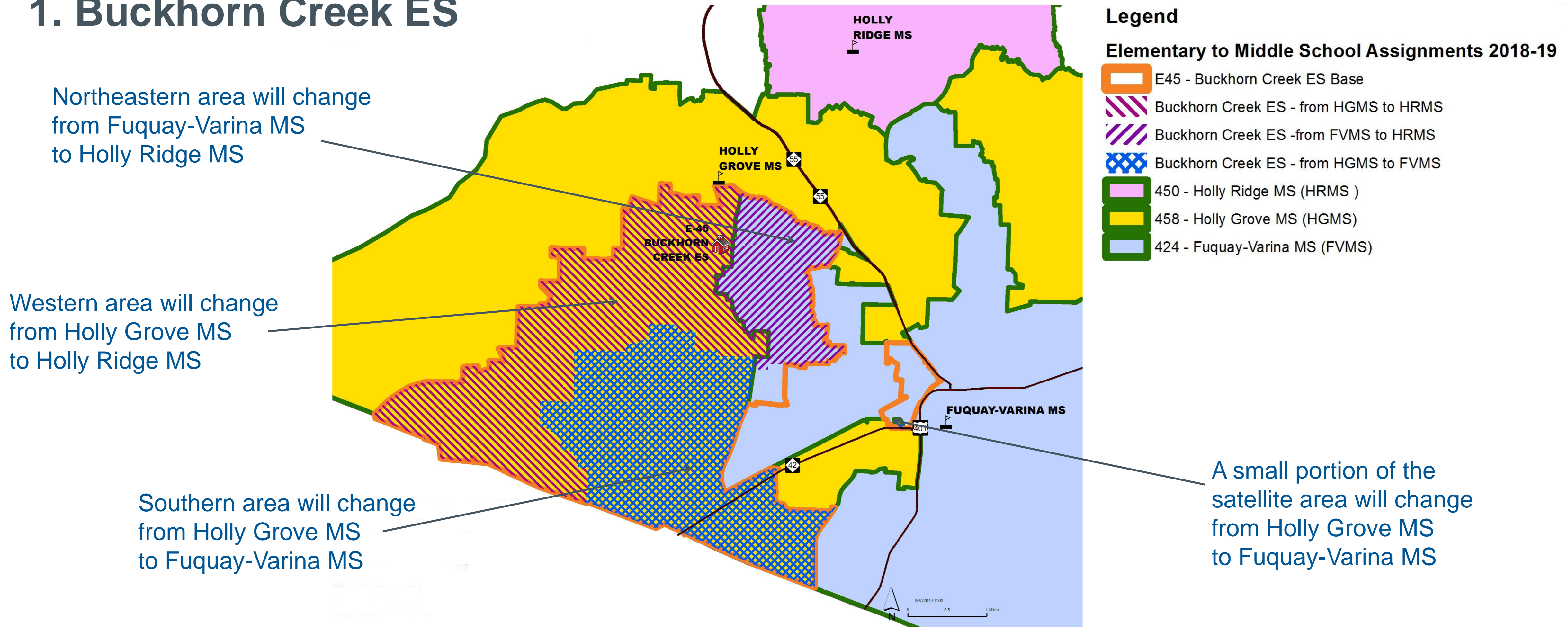
- Proposed changes to Holly Ridge MS and Lufkin Road MS



B. Calendar Feeder Pattern Alignments — Draft 3 Proposal

Option 1: Proposed Changes in Elementary to Middle School Base Assignments

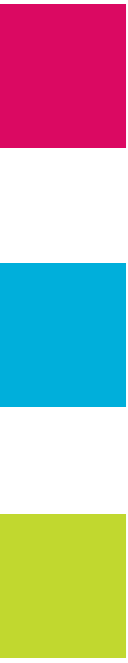
1. Buckhorn Creek ES



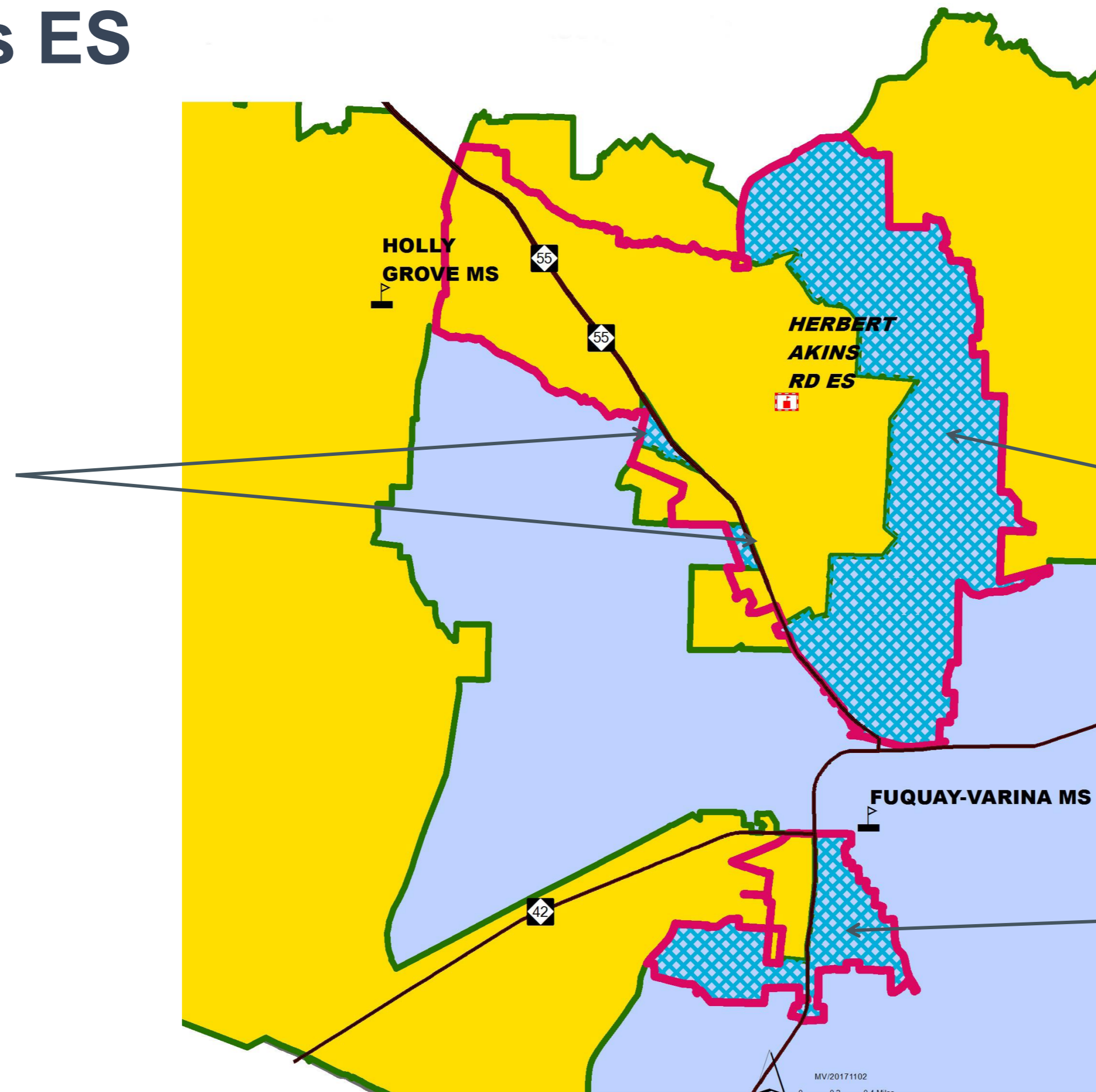
B. Calendar Feeder Pattern Alignments — Draft 3 Proposal

Option 1: Proposed Changes in Elementary to Middle School Base Assignments

2. Herbert Akins ES



Small portions of Fuquay-Varina MS will change to Holly Grove MS



Legend

Elementary to Middle School Assignments 2018-19

- 306 - Herbert Akins ES Base
- Herbert Akins ES - from FVMS to HGMS
- 424 - Fuquay-Varina MS (FVMS)
- 458 - Holly Grove MS (HGMS)

Eastern area will change from Fuquay-Varina MS to Holly Grove MS

Southern area will change from Fuquay-Varina MS to Holly Grove MS

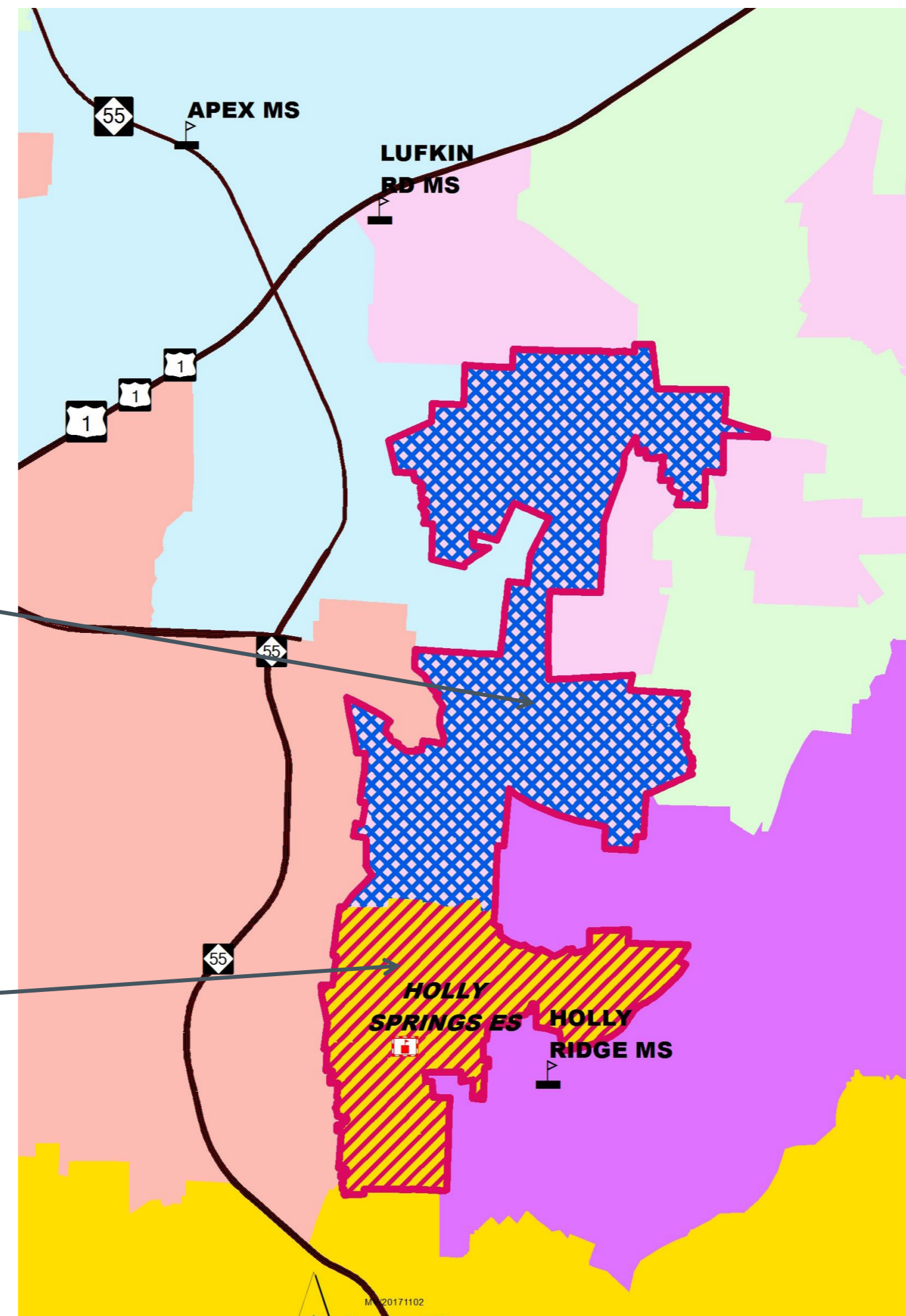
B. Calendar Feeder Pattern Alignments — Draft 3 Proposal

Option 1: Proposed Changes in Elementary to Middle School Base Assignments

3. Holly Springs ES

Northern area of Holly Springs ES will change from Holly Ridge MS to Lufkin Road MS

Southern area of Holly Springs ES will change from Holly Ridge MS to Holly Grove MS



Legend

Elementary to Middle School Assignments 2018-19

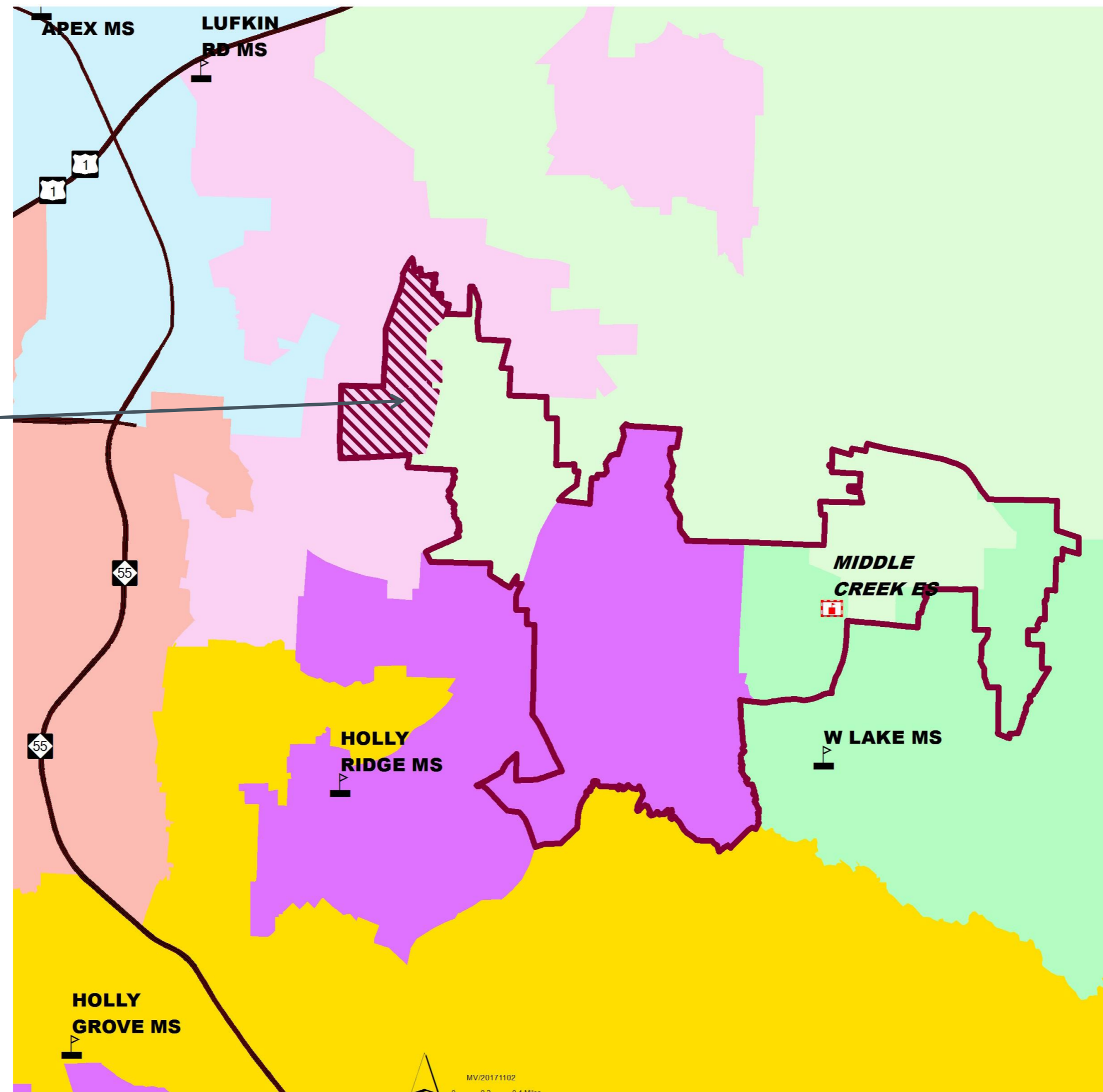
- 447 - Holly Springs ES Base
- Holly Springs ES - from HRES to HGMS
- Holly Springs ES - from HRES to LRMS
- 450 - Holly Ridge MS (HRMS)
- 458 - Holly Grove MS (HGMS)
- 484 - Lufkin Road MS (LRMS)

B. Calendar Feeder Pattern Alignments — Draft 3 Proposal

Option 1: Proposed Changes in Elementary to Middle School Base Assignments

4. Middle Creek ES

Northwestern area of Middle Creek ES will change from Holly Ridge MS to Lufkin Road MS



Legend

Elementary to Middle School Assignments 2018-19

- 494 - Middle Creek ES Base
- Middle Creek ES_ - from HRES to LRMS
- 450 - Holly Ridge MS (HRMS)
- 458 - Holly Grove MS (HGMS)
- 484 - Lufkin Road MS (LRMS)

B. Calendar Feeder Pattern Alignments – Draft 3 Proposal

Option 1: Proposed Changes in Middle School Base Assignments

2016-17 Base School	Capacity	Capacity w/ Trailers	2018-19 Util		2020-21 Util		Res	Academic Proficiency (Grades 6-8)			Actual
			2018-19 Util	w/ Trl	2020-21 Util	w/ Trl		Base	Non-Base	Agg	
APEX MS	1178	1178	110%	110%	113%	113%	81%	79%	79%	79%	79%
FUQUAY-VARINA MS	978	978	101%	101%	105%	105%	67%	62%	63%	62%	62%
HOLLY RIDGE MS	952	1316	142%	103%	147%	106%	71%	69%	68%	69%	68%
HOLLY GROVE MS	1688	1688	108%	108%	117%	117%	74%	75%	79%	76%	76%
LUFKIN ROAD MS	1246	1246	90%	90%	92%	92%	75%	77%	87%	82%	82%
APEX FRIENDSHIP MS (M11)											
	6042	6406	109%	103%	114%	107%					

2018-19 Base School	Capacity	Capacity w/ Trailers	2018-19 Util		2020-21 Util		Res	Academic Proficiency (Grades 6-8)		
			2018-19 Util	w/ Trl	2020-21 Util	w/ Trl		Base	Non-Base	Agg
APEX MS	1178	1178	99%	99%	101%	101%	80%	79%	79%	79%
FUQUAY-VARINA MS	978	978	97%	97%	99%	99%	66%	63%	63%	63%
HOLLY RIDGE MS	952	1316	97%	70%	103%	74%	74%	73%	68%	71%
HOLLY GROVE MS	1688	1688	108%	108%	112%	112%	73%	73%	79%	74%
LUFKIN ROAD MS	1246	1246	99%	99%	100%	100%	70%	70%	87%	79%
APEX FRIENDSHIP MS (M11)	1280	1280	54%	54%	65%	65%	78%	76%	n/a	n/a
	7322	7686	93%	88%	97%	92%				

PROFICIENCY LEGEND:

Res = Mean proficiency of students residing in base
 Base = Mean proficiency of base students in base
 Non-Base = Mean proficiency of non-base students
 Agg = Aggregate mean proficiency of base and non-base students
 Actual = Reading/English proficiency by school

B. Calendar Feeder Pattern Alignments — Draft 3 Proposal (cont.)

Option 2: Proposed Changes in Elementary to Middle School Base Assignments

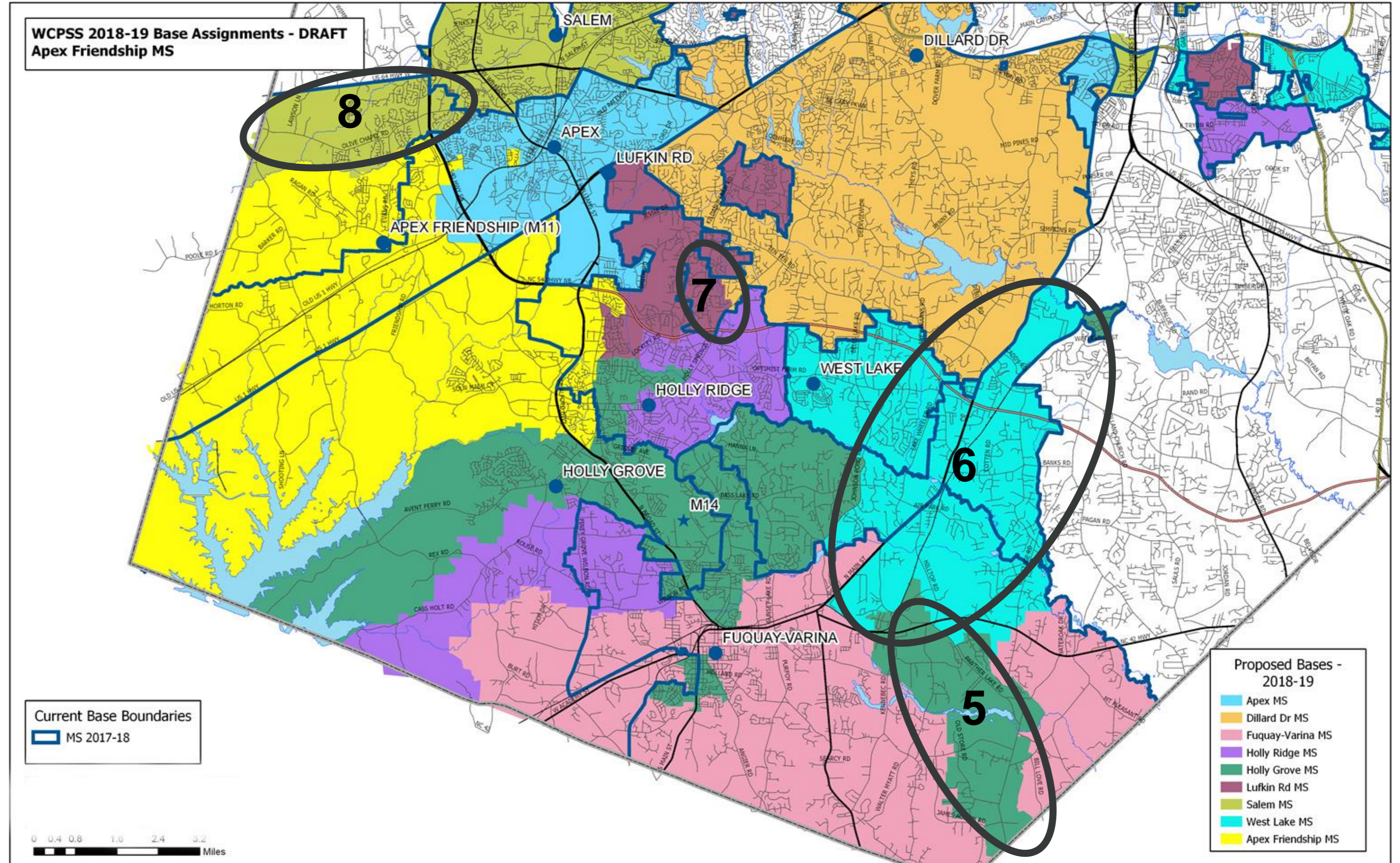
All of Option 1 (see slide 5), plus:

5. Willow Springs ES Base - Western portion (NOT proposed to be in new E-35 base) will change from Fuquay-Varina MS to Holly Grove MS

6. Banks Road ES Base - All of Banks Road ES base will all be assigned to West Lake MS (Fuquay-Varina MS and Holly Grove MS portions added)

7. Middle Creek ES Base - Northwestern portion assigned to Dillard Drive MS will change to Lufkin Road MS

8. Olive Chapel ES Base - Northern portion assigned to Lufkin Road MS will change to Salem MS



B. Calendar Feeder Pattern Alignments – Draft 3 Proposal (cont.)

Option 2: Proposed Changes in Middle School Base Assignments

2016-17 Base School	Capacity	Capacity w/ Trailers	2018-19 Util		2020-21 Util		Res	Academic Proficiency (Grades 6-8)			Actual
			2018-19 Util	w/ Trl	2020-21 Util	w/ Trl		Base	Non-Base	Agg	
APEX MS	1178	1178	110%	110%	113%	113%	81%	79%	79%	79%	79%
DILLARD DRIVE MS	1126	1282	102%	89%	102%	90%	71%	60%	54%	58%	58%
FUQUAY-VARINA MS	978	978	101%	101%	105%	105%	67%	62%	63%	62%	62%
HOLLY RIDGE MS	952	1316	142%	103%	147%	106%	71%	69%	68%	69%	68%
HOLLY GROVE MS	1688	1688	108%	108%	117%	117%	74%	75%	79%	76%	76%
LUFKIN ROAD MS	1246	1246	90%	90%	92%	92%	75%	77%	87%	82%	82%
SALEM MS	1272	1324	90%	86%	86%	83%	77%	76%	82%	77%	77%
WEST LAKE MS	1134	1316	117%	101%	119%	103%	63%	66%	79%	73%	72%
APEX FRIENDSHIP MS (M11)											
	9574	10328	106%	99%	110%	102%					

2018-19 Base School	Capacity	Capacity w/ Trailers	2018-19 Util		2020-21 Util		Res	Academic Proficiency (Grades 6-8)		
			2018-19 Util	w/ Trl	2020-21 Util	w/ Trl		Base	Non-Base	Agg
APEX MS	1178	1178	99%	99%	101%	101%	80%	79%	79%	79%
DILLARD DRIVE MS	1126	1282	99%	87%	99%	87%	70%	59%	54%	58%
FUQUAY-VARINA MS	978	978	84%	84%	85%	85%	66%	62%	63%	62%
HOLLY RIDGE MS	952	1316	97%	70%	103%	74%	74%	73%	68%	71%
HOLLY GROVE MS	1688	1688	101%	101%	103%	103%	75%	74%	79%	74%
LUFKIN ROAD MS	1246	1246	88%	88%	88%	88%	65%	64%	87%	77%
SALEM MS	1272	1324	106%	102%	104%	100%	78%	78%	82%	78%
WEST LAKE MS	1134	1316	147%	127%	152%	131%	64%	66%	79%	72%
APEX FRIENDSHIP MS (M11)	1280	1280	54%	54%	65%	65%	78%	76%	n/a	n/a
	10854	11608	97%	91%	100%	93%				

PROFICIENCY LEGEND:

Res = Mean proficiency of students residing in base

Base = Mean proficiency of base students in base

Non-Base = Mean proficiency of non-base students

Agg = Aggregate mean proficiency of base and non-base students

Actual = Reading/English proficiency by school

B. Calendar Feeder Pattern Alignments – Draft 3 Proposal (cont.)

Discussion: Review **Option 1** and **Option 2** for 2018-19

Option 1 - Changes in Middle School Assignments

Affected Elementary Schools

1. Buckhorn Creek ES
2. Herbert Akins ES
3. Holly Springs ES
4. Middle Creek ES

Affected Middle Schools

Holly Grove MS, Holly Ridge MS, Fuquay-Varina MS
Holly Grove MS, Fuquay-Varina MS
Holly Ridge MS, Lufkin Road MS
Holly Ridge MS, Lufkin Road MS

Option 2 - Changes in Middle School Assignments

Affected Elementary Schools

5. Willow Springs ES
6. Banks Road ES
7. Middle Creek ES
8. Olive Chapel ES

Affected Middle Schools

Holly Grove MS, Fuquay-Varina MS
Holly Grove MS, Fuquay-Varina MS, West Lake MS
Dillard Drive MS, Lufkin Road MS
Lufkin Road MS, Salem MS

Recommendation: Implement **Option 1** for 2018-19

Timeline of the Enrollment Process - Changes to Draft 2

	ACTIONS
May 16, 2017	BoE Work Session – review/discuss needs for 2018-19 Enrollment plan, seek board input on direction
September 19, 2017	BoE Work Session – staff presents Draft 1 of the 2018-19 enrollment plan; begin feedback process through online forums
September/October 2017	<p>BoE Advisory Committee Meetings – staff presents Draft 1; solicits feedback: District 1 - September 25, District 2 - October 11, District 5 - September 28, District 6 - September 22, District 7 - October 11, District 8 - October 2</p> <p>General Public Information Sessions on: October 6 - Holly Grove MS, and</p>
October 17, 2017	BoE Work Session – staff presents Draft 2 of the 2018-19 enrollment plan; continue to solicit feedback through online forums
November 7, 2017	BoE Work Session – staff presents Draft 3 of the 2018-19 enrollment plan;
November 21, 2017	BoE Work Session – staff presents Final Revision of the 2018-19 enrollment plan
	BoE Meeting – public hearing of the 2018-19 enrollment plan
December 5, 2017	BoE Meeting – approval of the 2018-19 enrollment plan

*Updates