



RUSD

RIVERSIDE UNIFIED
SCHOOL DISTRICT



Ofelia Valdez-Yeager Eastside Elementary School Attendance Boundaries

Orin Williams
Assistant Superintendent,
Facilities, Planning, & Development

July 24, 2025

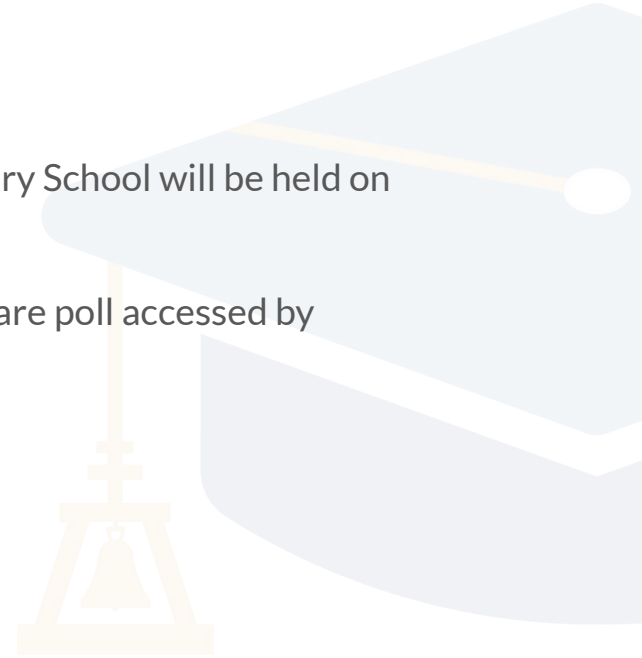
Boundary Change Community Meetings

Community meetings will be held at Lincoln High School to receive public input regarding the boundary options on the following dates:

August 5, 2025 at 6pm
August 14, 2025 at 6pm

A groundbreaking ceremony for Ofelia Valdez-Yeager Eastside Elementary School will be held on Thursday, September 25 at 9am.

Vote for your preferred boundary option by participating in a ParentSquare poll accessed by scanning this QR code:



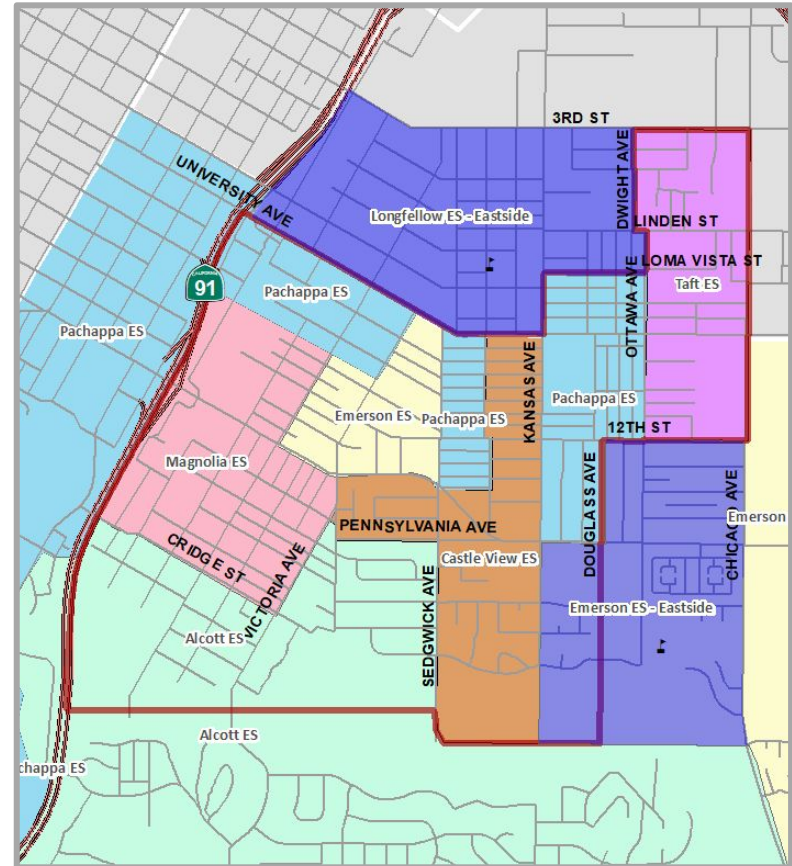
Current Elementary School Boundaries

Eastside Neighborhood residing students attend the following schools:

- Alcott ES - 151
- Castle View ES - 182
- Emerson - 131
- Magnolia ES - 109
- Pachappa ES - 182
- Taft ES - 232
- Virtual - 20
- Other Schools of attendance - 138

1,145* Total TK- 6th Grade Students
reside in the Eastside Neighborhood

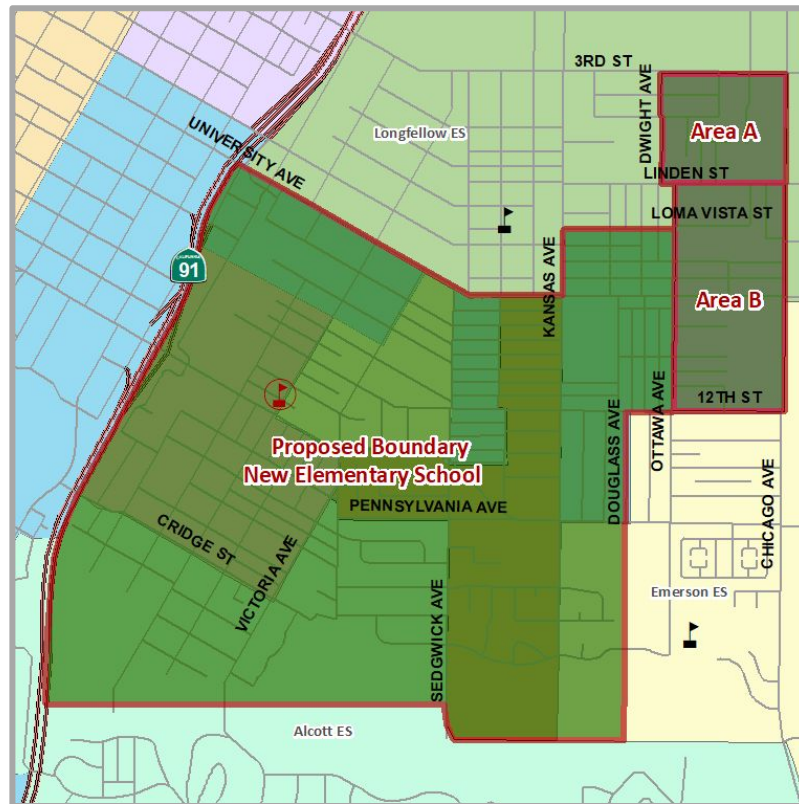
* exclusion of Longfellow & Emerson Eastside Areas shown in blue



ENROLLMENT DATA FROM CENSUS DAY 10.3.2024

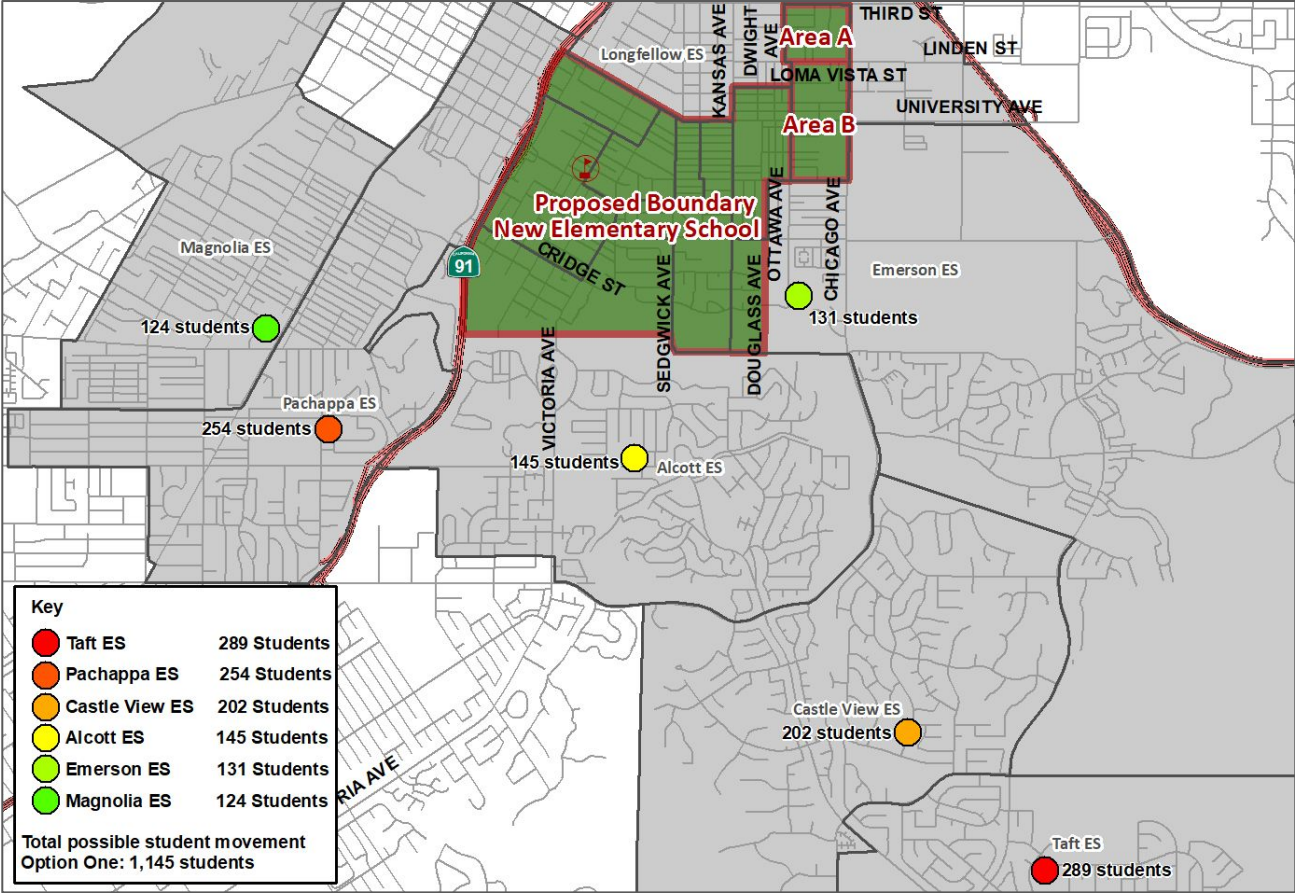
Boundary Option One

School	2024/25 Enrollment	Students Residing in Eastside	Projected Enrollment
Alcott Elementary	607	-145	462
Castle View Elementary (DLI)	684	-202	482
Magnolia Elementary	535	-124	411
Pachappa Elementary	681	-254	427
Taft Elementary	635	-289	346
Ofelia Valdez-Yeager Eastside Elementary School	N/A	856	856
Longfellow ES or Boundary Area A	703	101	804
Emerson ES or Boundary Area B	674	Net 57	731



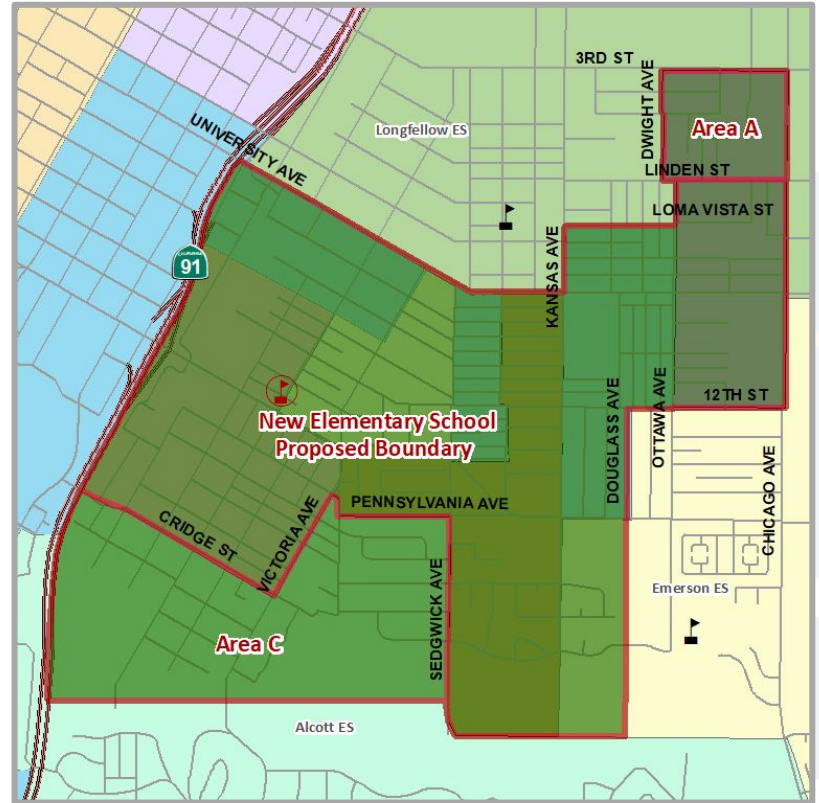
ENROLLMENT DATA FROM CENSUS DAY 10.3.2024

Total Student Movement - Option One



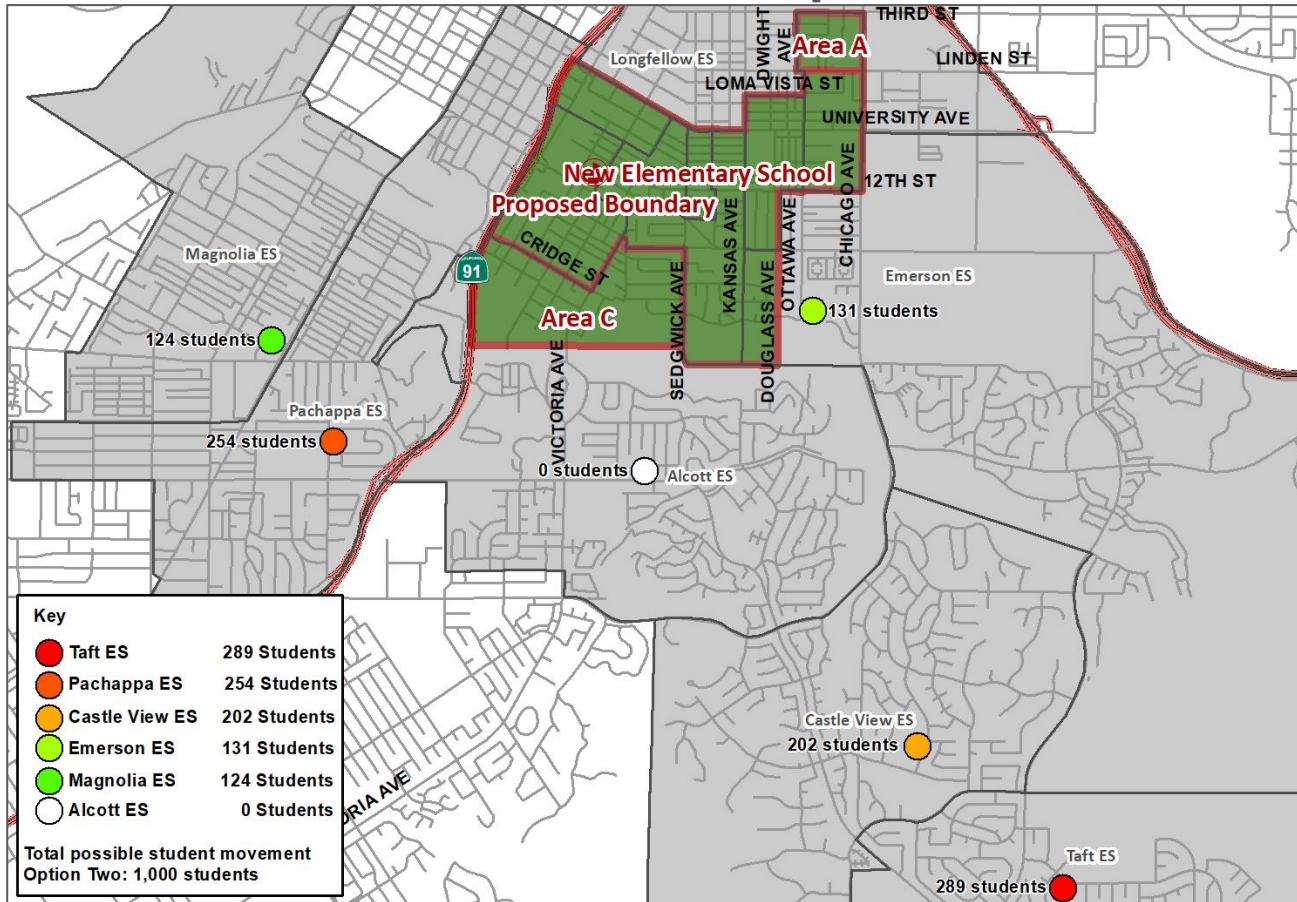
Boundary Option Two

School	2024/25 Enrollment	Students Residing in Eastside	Projected Enrollment
Castle View Elementary (DLI)	684	-202	482
Emerson Elementary	674	-131	543
Magnolia Elementary	535	-124	411
Pachappa Elementary	681	-254	427
Taft Elementary	635	-289	346
Ofelia Valdez-Yeager Eastside Elementary School	N/A	899	899
<i>Longfellow ES or Boundary Area A</i>	703	101	804
<i>Alcott ES or Boundary Area C</i>	607	<i>Included</i>	607



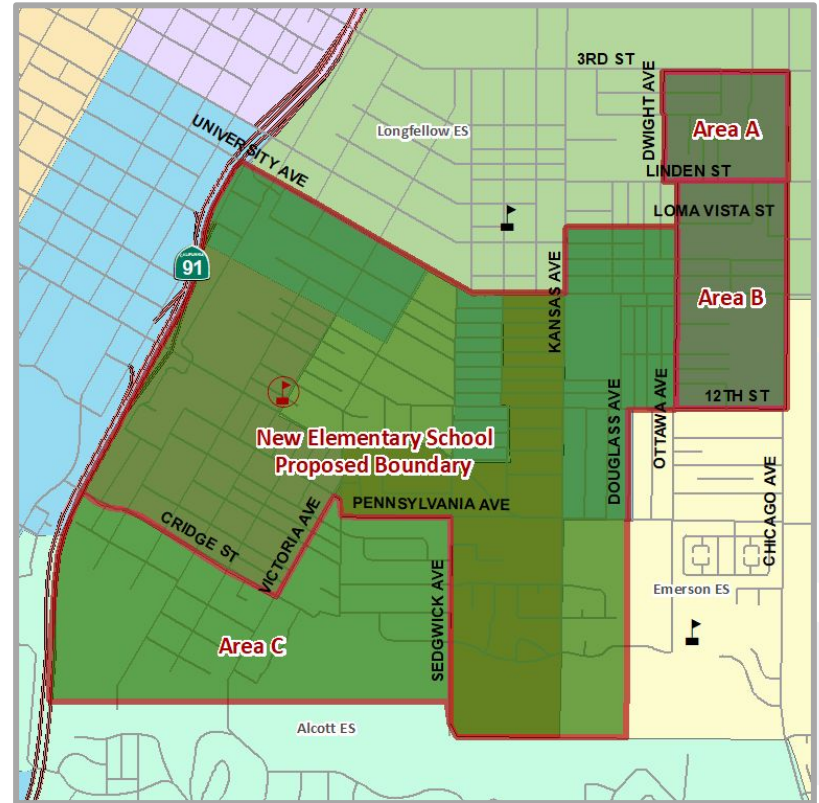
ENROLLMENT DATA FROM CENSUS DAY 10.3.2024

Total Student Movement - Option Two



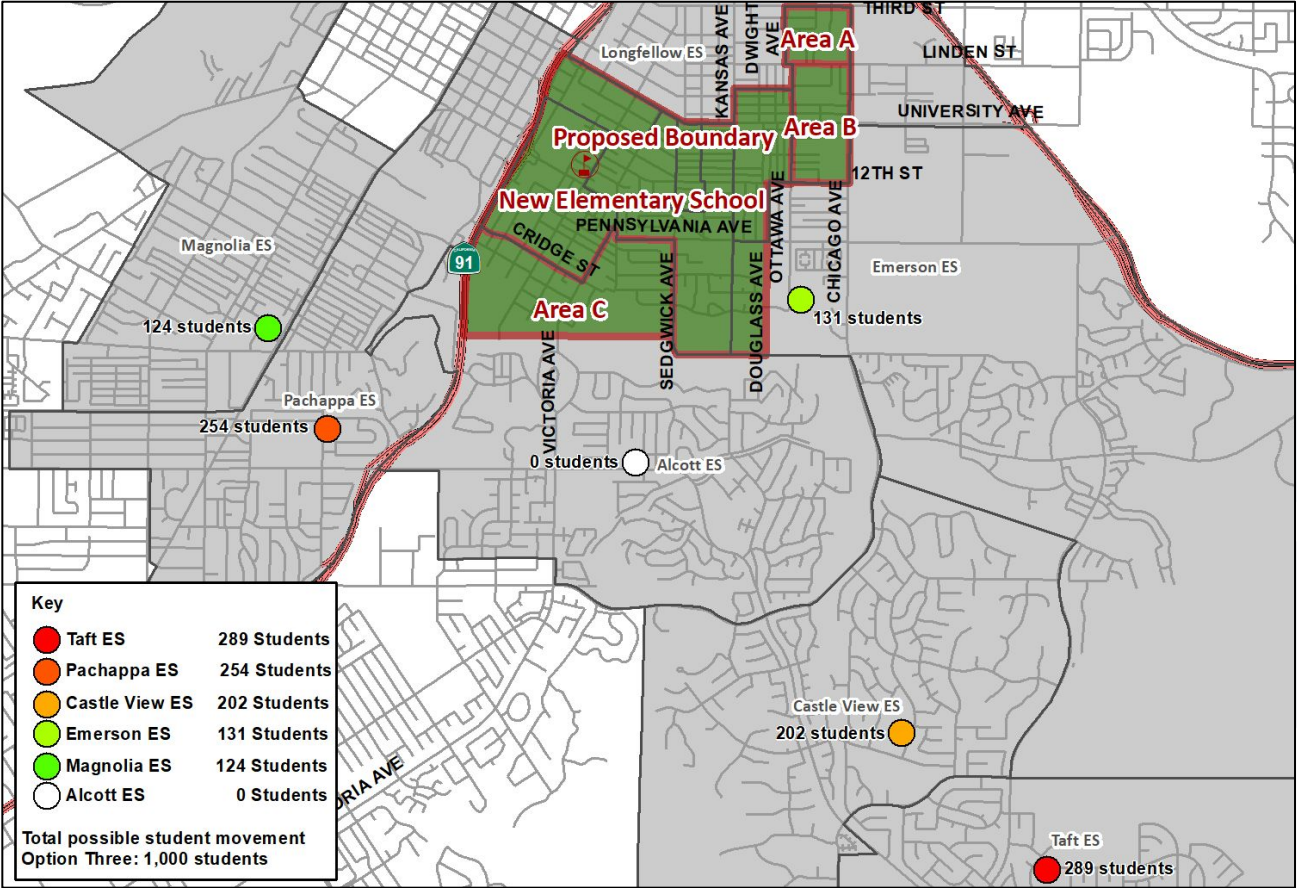
Boundary Option Three

School	2024/25 Enrollment	Students Residing in Eastside	Projected Enrollment
Castle View Elementary (DLI)	684	-202	482
Magnolia Elementary	535	-124	411
Pachappa Elementary	681	-254	427
Taft Elementary	635	-289	346
Ofelia Valdez-Yeager Eastside Elementary School	N/A	711	711
<i>Longfellow ES or Boundary Area A</i>	703	101	804
<i>Emerson ES or Boundary Area B</i>	674	Net 57	731
<i>Alcott ES or Boundary Area C</i>	607	Included	607



ENROLLMENT DATA FROM CENSUS DAY 10.3.2024

Total Student Movement - Option Three

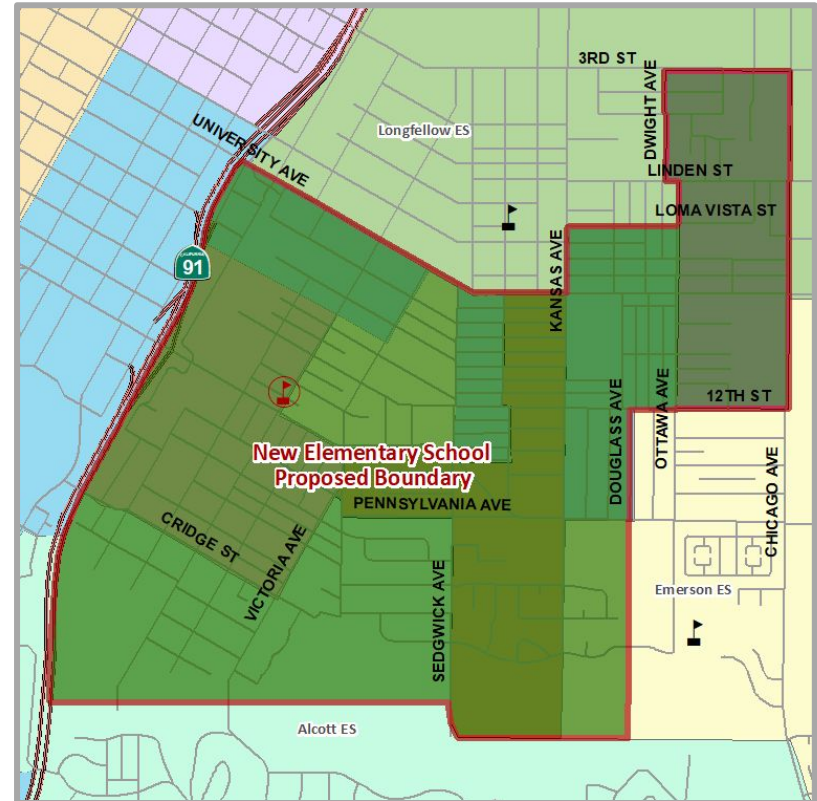


If No Action is Taken

Current transfers out of Eastside:

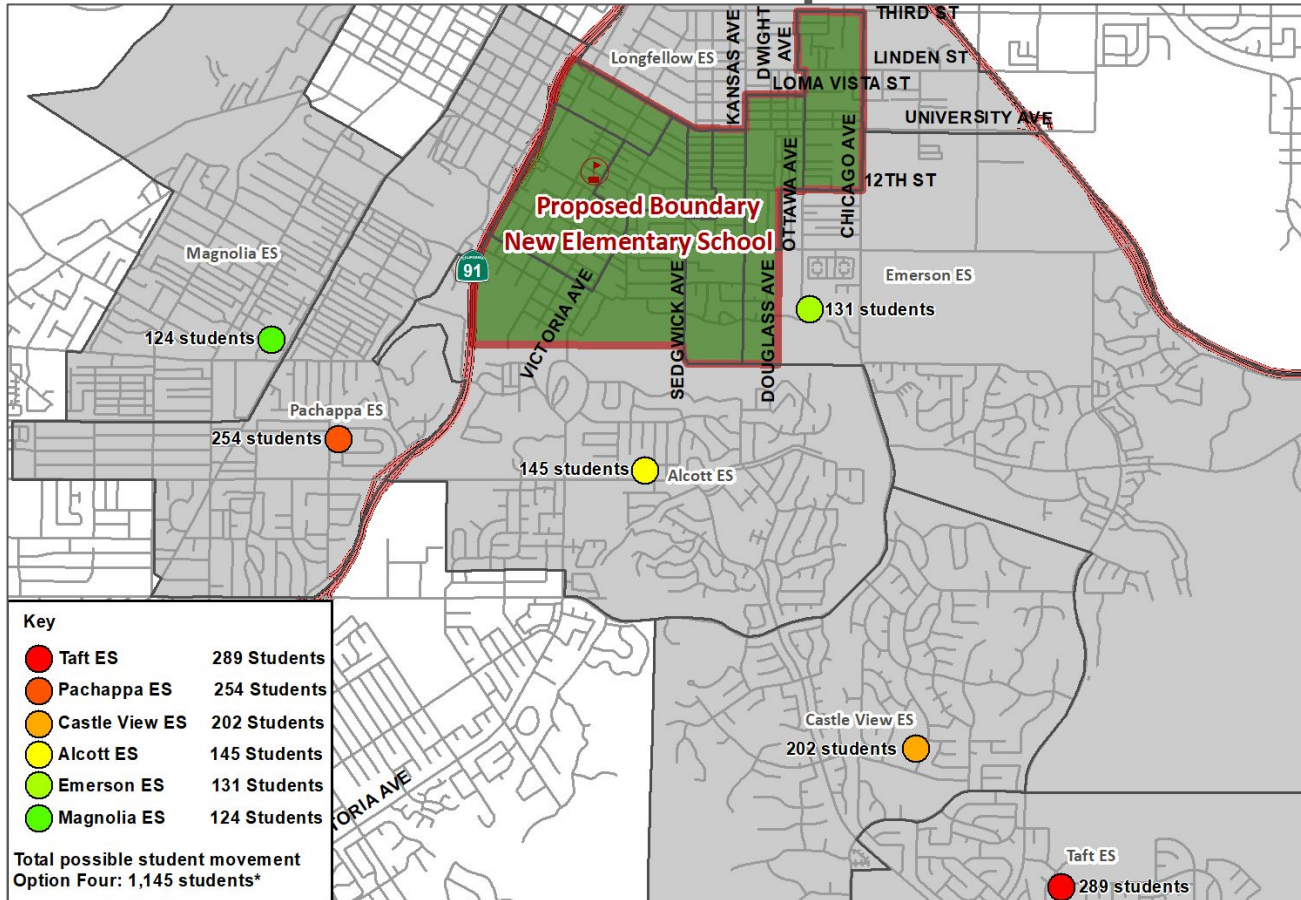
School	Transfers
Longfellow Elementary (DLI)	49
Longfellow Elementary	33
Victoria Elementary	11
15 schools/programs with 10 students or less	45
Remaining resident students	1007

Assumptions: DLI draw to Longfellow ES and self-selected transfer students will continue



ENROLLMENT DATA FROM CENSUS DAY 10.3.2024

Total Student Movement - Option Four



*Total resident students



RUSD

**RIVERSIDE UNIFIED
SCHOOL DISTRICT**

**PUBLIC
COMMENTS**