

# DRAFT 3 - Continued Discussion

## WCPSS ENROLLMENT PLAN, 2018-19

### YEAR FOUR OF A MULTI-YEAR APPROACH TO GROWTH MANAGEMENT

Prepared by: Office of Student Assignment

Board of Education Work Session  
November 21, 2017

# DRAFT 3 - Continued Discussion

## A. Draft 3

- Community Feedback Report
- Pending Decisions: Buckhorn Creek ES, Calendar Feeder Pattern Alignments

Page

3 - 8

## B. New Schools, Summary

- Bryan Road ES, Buckhorn Creek ES, Apex Friendship MS, South Garner HS, E46-"YMCA" ES

9 - 19

## C. Operational Efficiency

Remove from the Plan

- Increase of base attendance areas: Adams ES, East Cary MS
- Change of year-round application areas: East Cary MS, Lufkin Road MS, and Salem MS

20 - 22

Include in the Plan

- Increase of base attendance areas: Brooks ES

## D. Grandfather Guidelines

23 - 24

## E. Timeline Update

25

# Calendar Feeder Pattern Alignments – Elementary to Middle Schools

## Draft 3 Community Feedback

- Staff sent an email to approximately 2,700 families that were affected by Option 1
- Received 207 RSVP's to attend the public meeting
- Approximately 200 parents were in attendance at Holly Springs HS on Monday, November 13, 2017
- Feedback from parents in attendance:
  - Not in favor of aligning elementary and middle school calendar
  - Prefer Buckhorn Creek ES to open on a year-round calendar
  - Prefer community based schools

# Calendar Feeder Pattern Alignments – Elementary to Middle Schools

## Draft 3 Community Feedback (cont.)

### 1. What are pros and cons of leaving the assignments as they are currently?

<b>P R O S</b>	<ul style="list-style-type: none"> <li>Family time together/vacations (11)</li> <li>Keep neighborhoods together (26)</li> <li>Stability (21)</li> <li>High schoolers can more easily handle changes</li> <li>Shorter Distance (walk to school/shorter or no bus ride) (36)</li> <li>Separate schedules</li> </ul>	<ul style="list-style-type: none"> <li>Not everyone attends assigned base, so we can attend chosen school</li> <li>Keep siblings together at same school (3)</li> <li>Safety (3)</li> <li>Less traffic (4)</li> <li>Siblings on the same schedule (9)</li> <li>PTA/volunteers remain at same school, more involved (6)</li> </ul>	<ul style="list-style-type: none"> <li>More electives in YR</li> <li>Options (3)</li> <li>Prefer traditional calendar (3)</li> <li>Calendar misalignments at high school anyway, so aligning ES and MS doesn't matter</li> <li>Have always been misaligned, now are about to align calendars but changes will misalign them again</li> </ul>	<ul style="list-style-type: none"> <li>Divide responsibilities between students on different schedules</li> <li>Planning</li> <li>Grandfathering option</li> <li>Track 4 and traditional similar</li> </ul>
	<b>C O N S</b>	<ul style="list-style-type: none"> <li>No vacation/family together time (21)</li> <li>Switching calendars when moving up grade configurations (6)</li> <li>No calendar alignment between sibs (22)</li> <li>Longer Distance/bus rides (28)</li> <li>Childcare during track-out (11)</li> <li>Availability of seats in calendar options (2)</li> <li>Traffic problems (4)</li> </ul>	<ul style="list-style-type: none"> <li>Transferring 6<sup>th</sup> graders after only one year</li> <li>Afternoon pickup/childcare between two schools (ES and MS) (3)</li> <li>Bus driver shortage</li> <li>Loss of family time</li> <li>After school programs/sports (3)</li> <li>Challenge for families new to district</li> <li>Calendar mismatches do not accommodate military families</li> </ul>	<ul style="list-style-type: none"> <li>Loss of sense of community</li> <li>Feeder patterns</li> <li>Lack of stability (2)</li> <li>Forced assignment to particular calendar (3)</li> <li>Parent miss more work for appointments</li> <li>Younger siblings can't follow older and have same teachers</li> <li>No friends at school</li> <li>Higher cost to taxpayers</li> </ul>

### 2. What are pros and cons of aligning calendars?

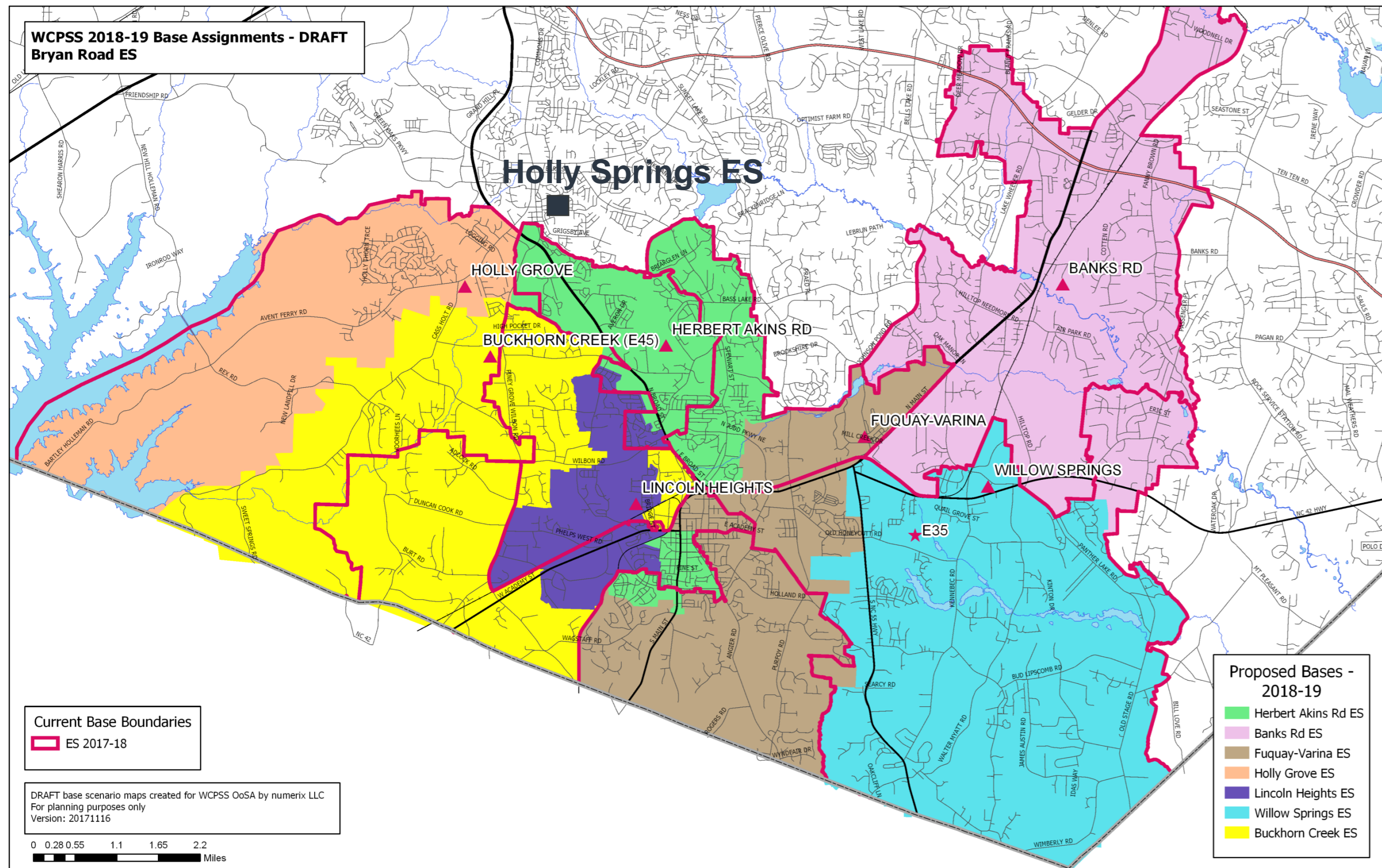
<b>P R O S</b>	<ul style="list-style-type: none"> <li>Keep neighborhoods and friends together (2)</li> <li>Sees family out of town during track out</li> <li>Siblings aligned (19)</li> <li>Attractive for new families</li> </ul>	<ul style="list-style-type: none"> <li>Save money on busing (2)</li> <li>Students can do homework on bus</li> <li>Families can vacation together</li> <li>Only pro if all who want to stay can grandfather</li> </ul>		
	<b>C O N S</b>	<ul style="list-style-type: none"> <li>Forced change from preferred calendar (16)</li> <li>Long distance/bussing (70)</li> <li>Neighborhoods/communities not together (33)</li> <li>Does not make common sense (2)</li> <li>Disruption for families/students (including IEP students) (49)</li> <li>Less parent involvement/family time (6)</li> <li>No support for families (2)</li> <li>No options</li> <li>Doesn't fix misalignment for all (including HS) (15)</li> <li>Cost of more bus drivers/gas/more busses on road (11)</li> <li>Zero planning (3)</li> <li>Students do better with shorter breaks</li> </ul>	<ul style="list-style-type: none"> <li>Loss of involvement from volunteers/PTA (10)</li> <li>Not all communities affected, only targeted communities</li> <li>Loss of peer group (8)</li> <li>Two middle school sibs at different schools</li> <li>Having to apply to calendar option (3)</li> <li>Feeder patterns don't make sense (4)</li> <li>Can't do/difficulty with after school activities/sports (7)</li> <li>Increase traffic (12)</li> <li>Not enough busses</li> <li>Assumes families want calendar alignment (2)</li> <li>No chance to give feedback before process started (4)</li> <li>Transfer students can stay, local kids must move</li> </ul>	<ul style="list-style-type: none"> <li>Holly Ridge already overcrowded</li> <li>Hundreds of families will apply to stay at Holly Grove Middle</li> <li>Does not enhance instructional day (4)</li> <li>Students may have to change tracks</li> <li>Will have same issues when new schools open (5)</li> <li>Short notice for upcoming school year (2)</li> <li>Apex Friendship is not in Holly Springs</li> <li>Students have less time for homework</li> <li>Doesn't allow grandfathering (2)</li> <li>Will reduce desire to build more schools</li> <li>May have to add trailers which is security risk</li> <li>Learning retention (3)</li> </ul>

### 3. Questions/Comments:

<ul style="list-style-type: none"> <li>• Open Buckhorn as YR (21)</li> <li>• Keep Oliver Creek at Holly Grove Middle</li> <li>• Make all schools YR</li> <li>• Make all schools Traditional (3)</li> <li>• Correct misalignments when opening new schools, don't change now</li> <li>• Scrap Draft 3 (2)</li> <li>• Split school district – too big to manage (4)</li> <li>• Use other buildings to house Buckhorn students until completed</li> <li>• Grandfather middle school students</li> <li>• How will high school assignments change with new schools opening?</li> <li>• Adjust feeder patterns as children age out of one school</li> </ul>	<ul style="list-style-type: none"> <li>• How likely is it that we would get a transfer?</li> <li>• Make Holly Grove Middle traditional</li> <li>• All children should be grandfathered into existing school</li> <li>• Fuquay-Varina deserves a voice (2)</li> <li>• Why not change YR schools that aren't full to traditional?</li> <li>• Why not have a traditional track at a YR school?</li> <li>• Align communities, not calendars</li> <li>• Delay school year start by a month, this solves Buckhorn not being aligned with Holly Grove</li> <li>• Change calendars of existing schools rather than future schools</li> <li>• Board should have planned better rather than trying to fix issues on backs of children</li> </ul>	<ul style="list-style-type: none"> <li>• Instructions for feedback not clear</li> <li>• Make Buckhorn an application school</li> <li>• Better transfer policy needed</li> <li>• Parents should have their choice of calendars</li> <li>• Don't move Sandy Springs to Lincoln Heights – want YR</li> <li>• Please grandfather Willow Springs so we don't have to move again when new school opens (2)</li> <li>• Parents not available for November 21<sup>st</sup> meeting</li> <li>• Need more YR schools</li> <li>• Bring cost of YR from Facilities to next week's meeting</li> </ul>	<ul style="list-style-type: none"> <li>• Buckhorn – open at full capacity, take 1 week from each track-out session, treat as magnet that requires application</li> <li>• Keep traditional on one side of town, YR on other</li> <li>• Why does Middle Creek get a carve-out and Holly Grove ES and MS do not?</li> <li>• Why should kids from Raleigh go to Holly Grove Middle but not our kids who live two miles away?</li> <li>• Students who live closer should have more priority</li> <li>• When to apply for Calendar option? Will it filter over to middle school?</li> <li>• Sunset North no longer a young neighborhood – mostly HS</li> </ul>
---	--	--	--

# Draft 3 Feedback New School – Buckhorn Creek ES (2018-19)

## Proposed 2018-19 Base Attendance Areas, DRAFT 3



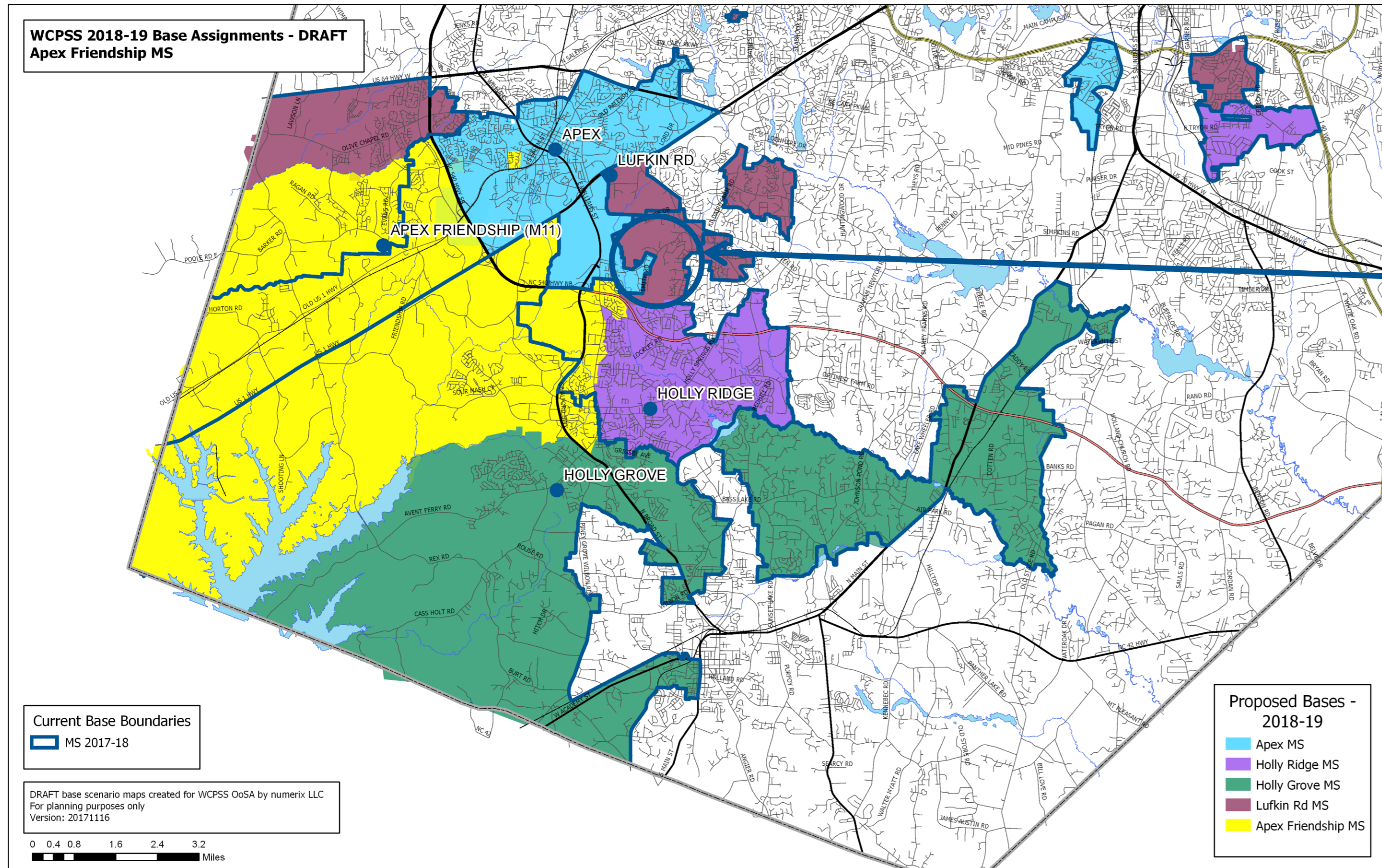
### Recommendation:

**Approve** Draft 3 proposed move of Parker Pointe Subdivision from Lincoln Heights ES to Herbert Akins ES Base.

**Approve** Draft 3 proposed adding of Holly Springs ES as a year-round application school for Buckhorn Creek ES families currently attending Holly Grove ES.

# Draft 3 Feedback New School – Buckhorn Creek ES (2018-19)

## Proposed 2018-19 Base Attendance Areas, DRAFT 3



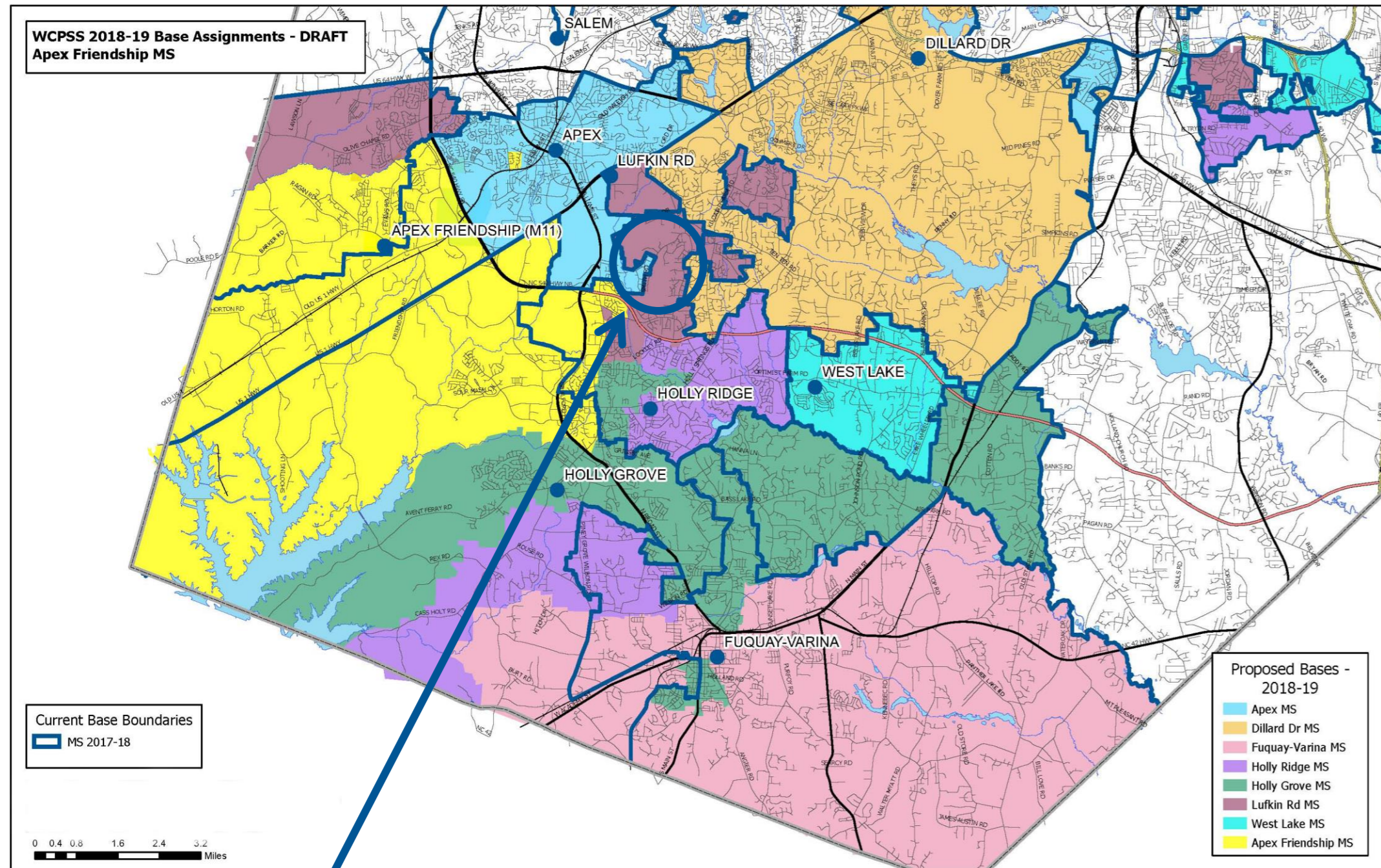
### Recommendation:

**Approve** Draft 3 proposed move of Holly Grove MS partial base area to Lufkin Road MS base area.

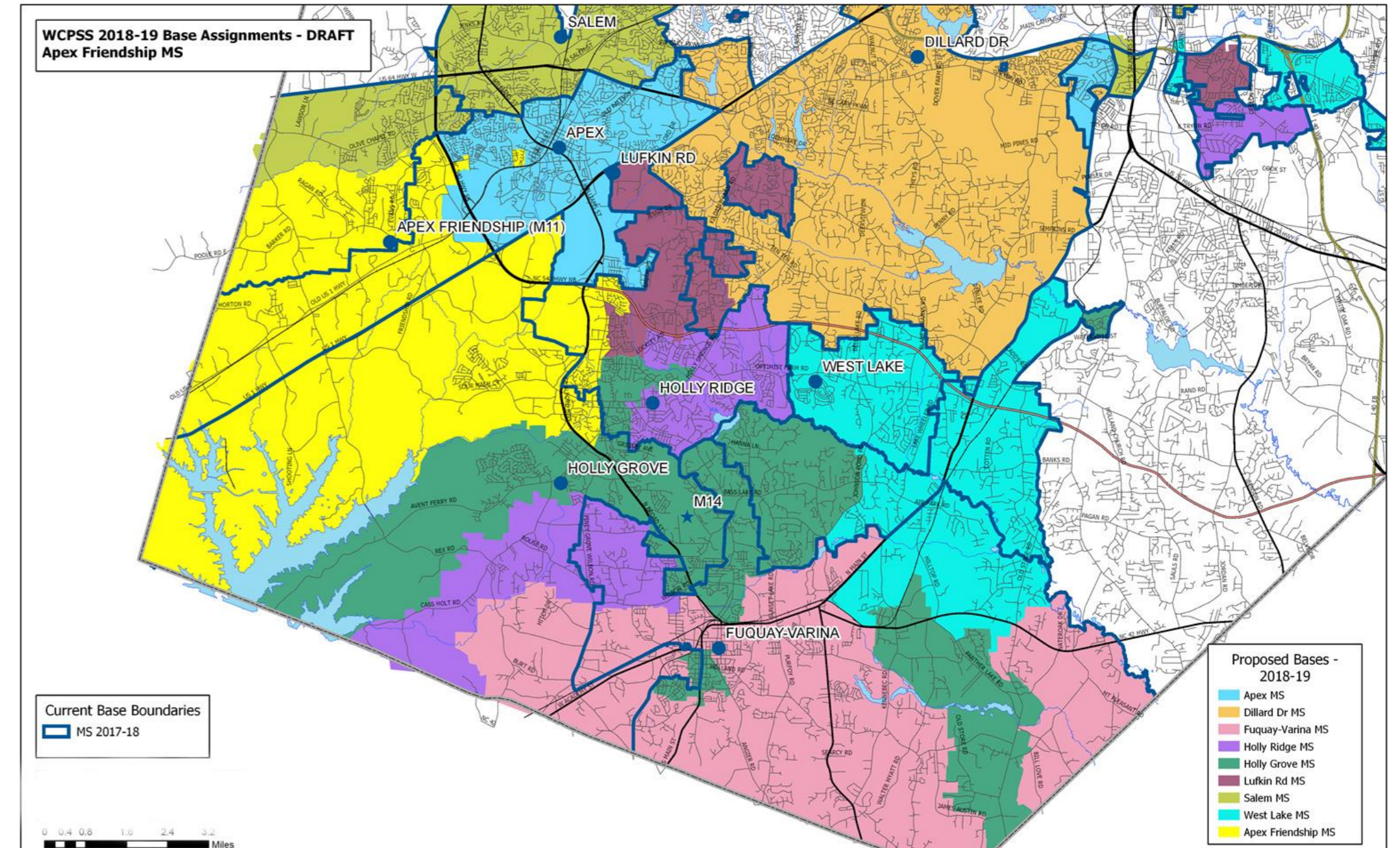
This area was proposed to move to Apex MS in Drafts 1 and 2.

# Calendar Feeder Pattern Alignments – Elementary to Middle Schools

## Option 1, Draft 3



## Option 2, Draft 3

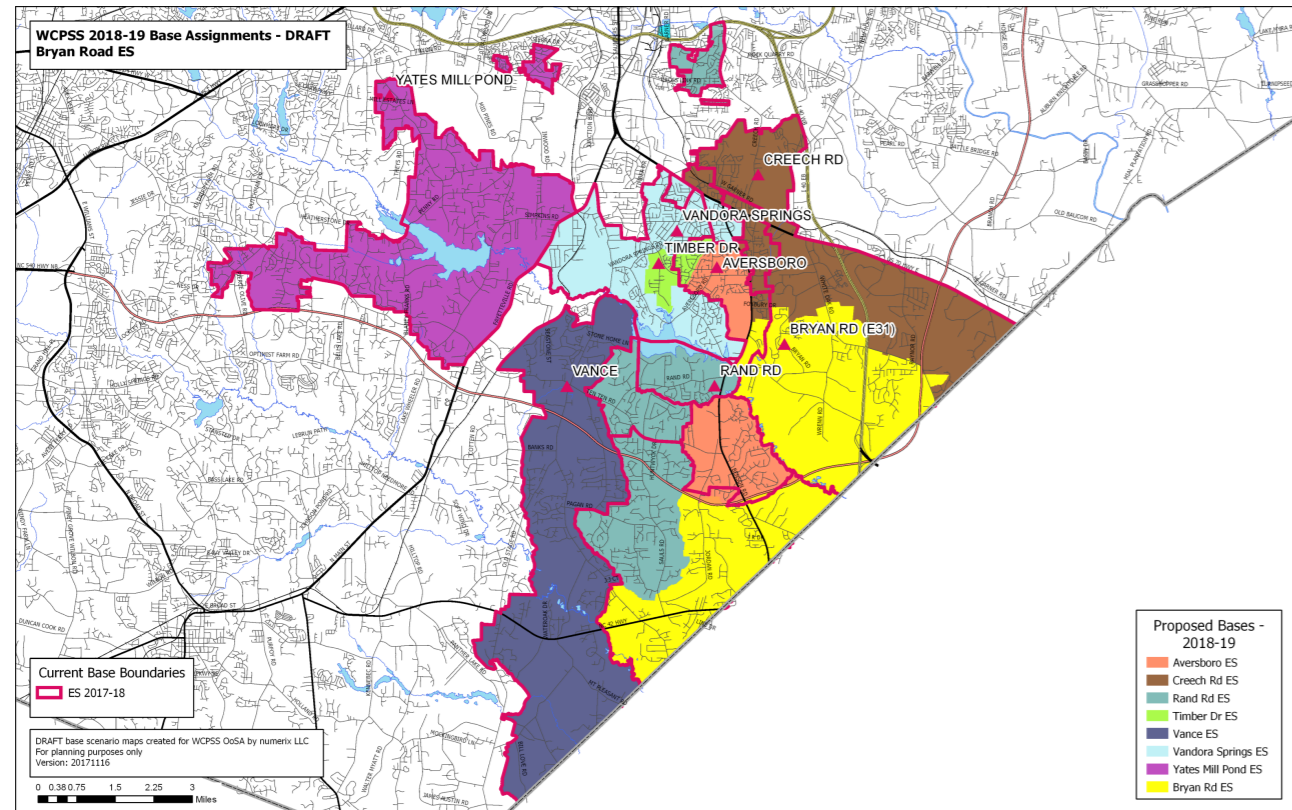


## Recommendation:

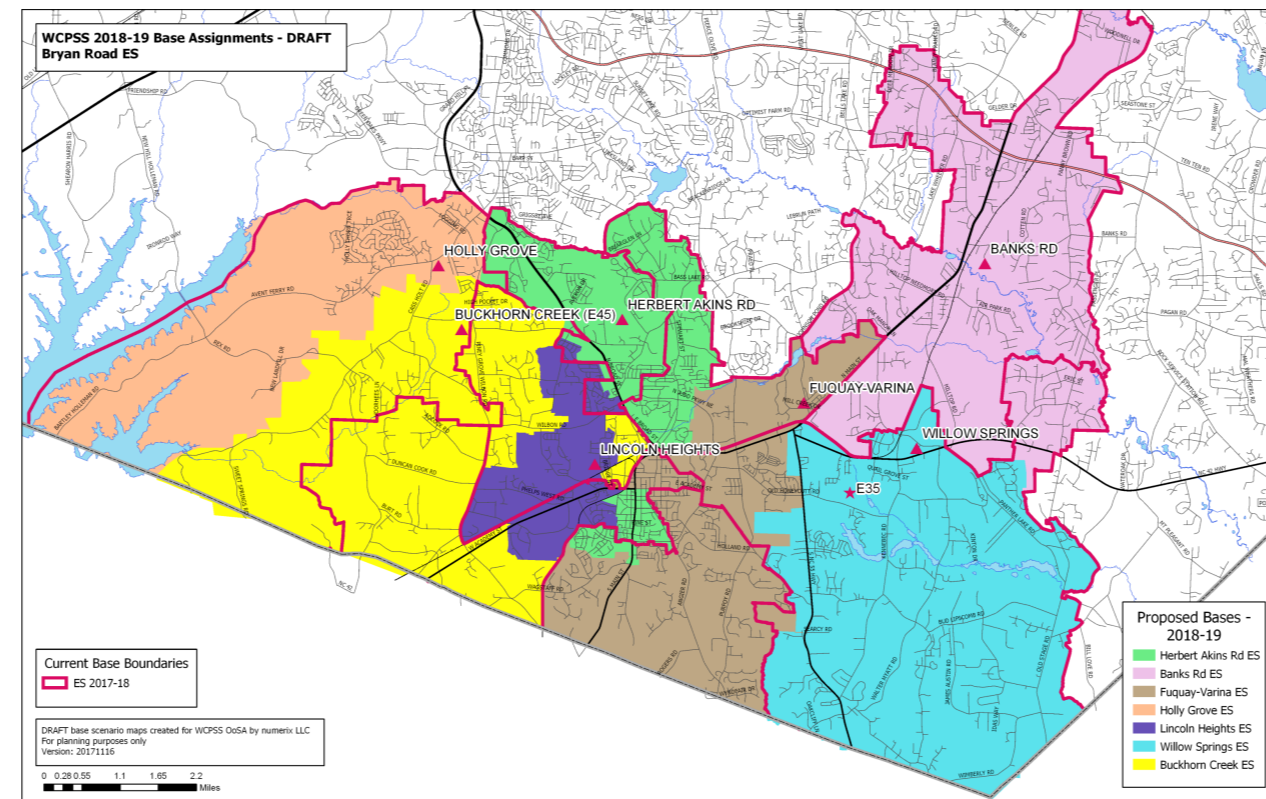
**Remove Option 1** and **Option 2** from Draft 3 of the WCPSS ENROLLMENT PLAN, 2018-19, **except** for the proposed move from Holly Grove MS to Lufkin Road MS (see slide 7).

# New School Openings – 2018 -19 Summary

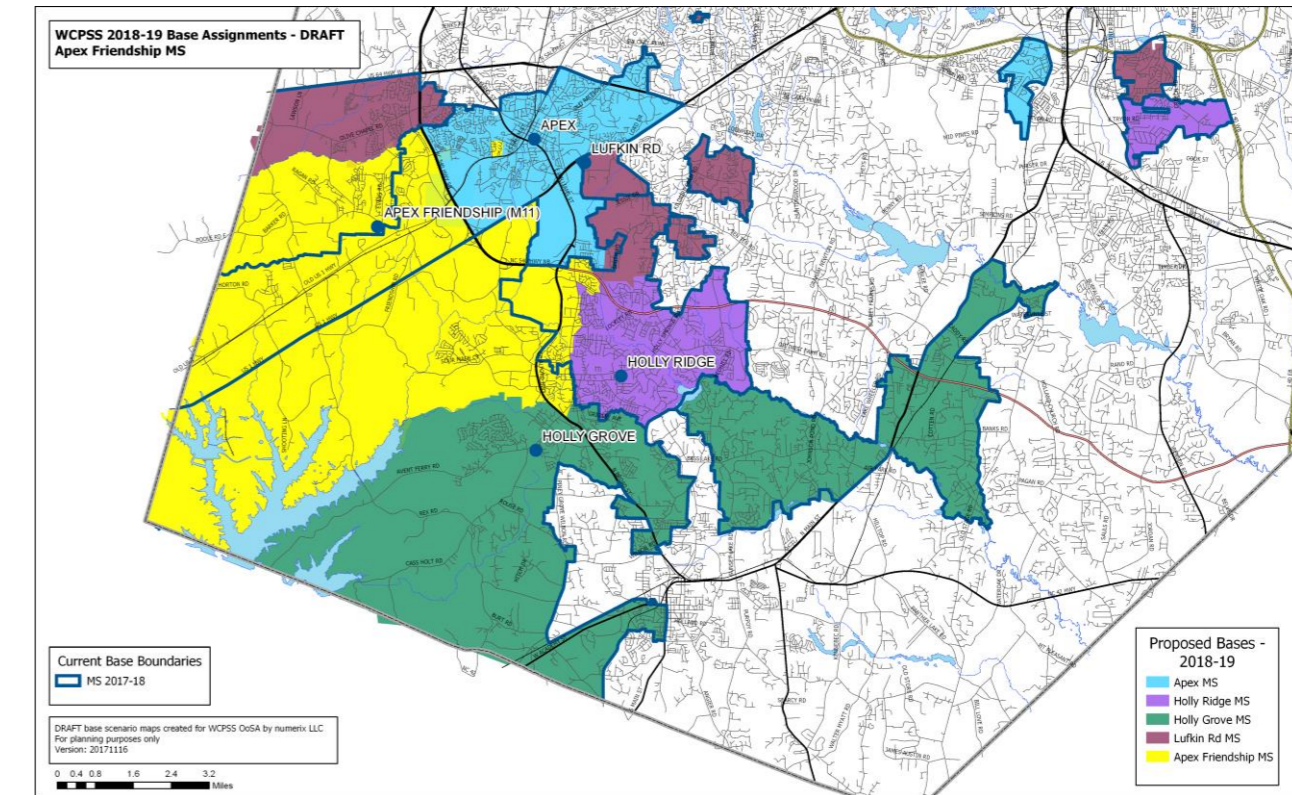
## Bryan Road Elementary School (D2)



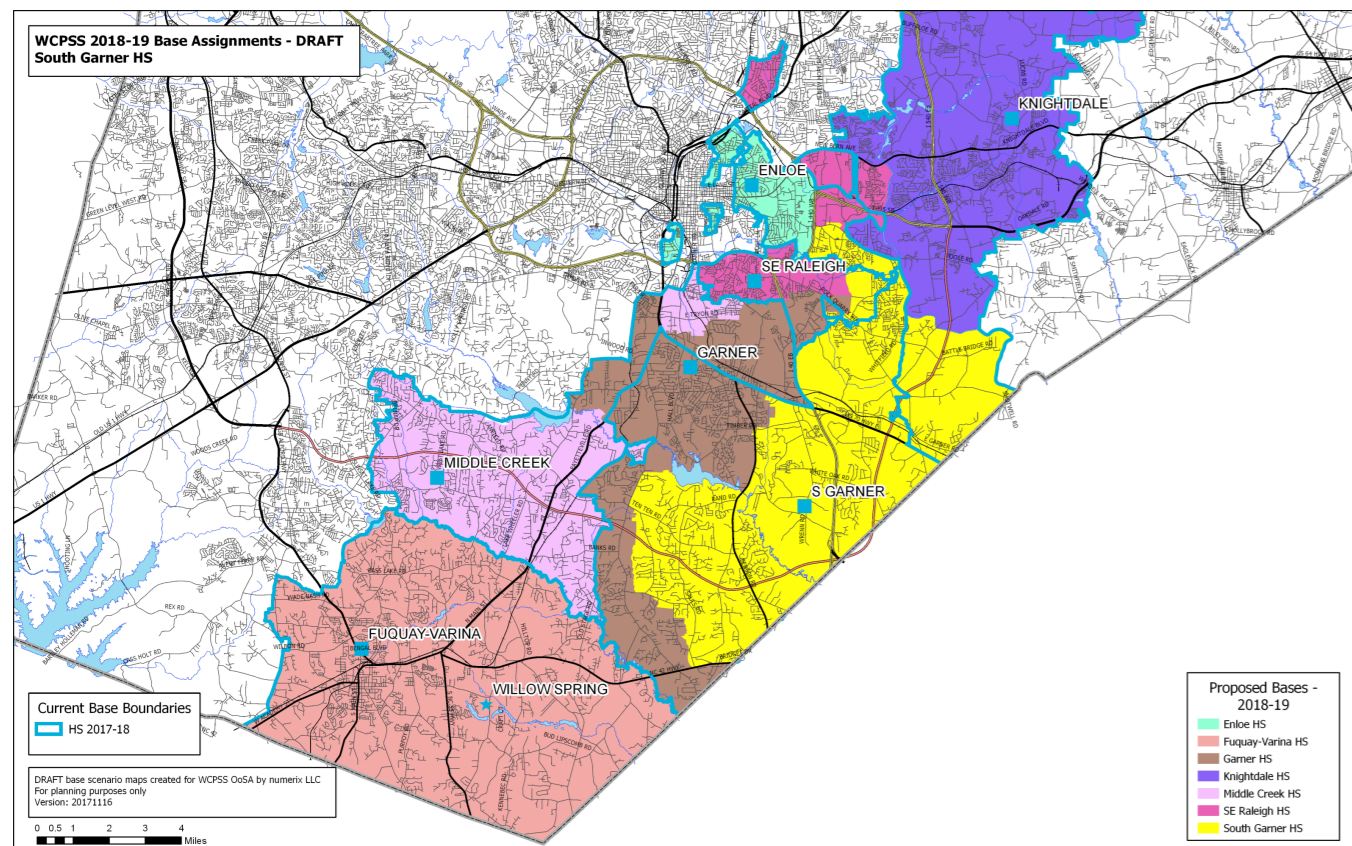
## Buckhorn Creek Elementary School (D3)



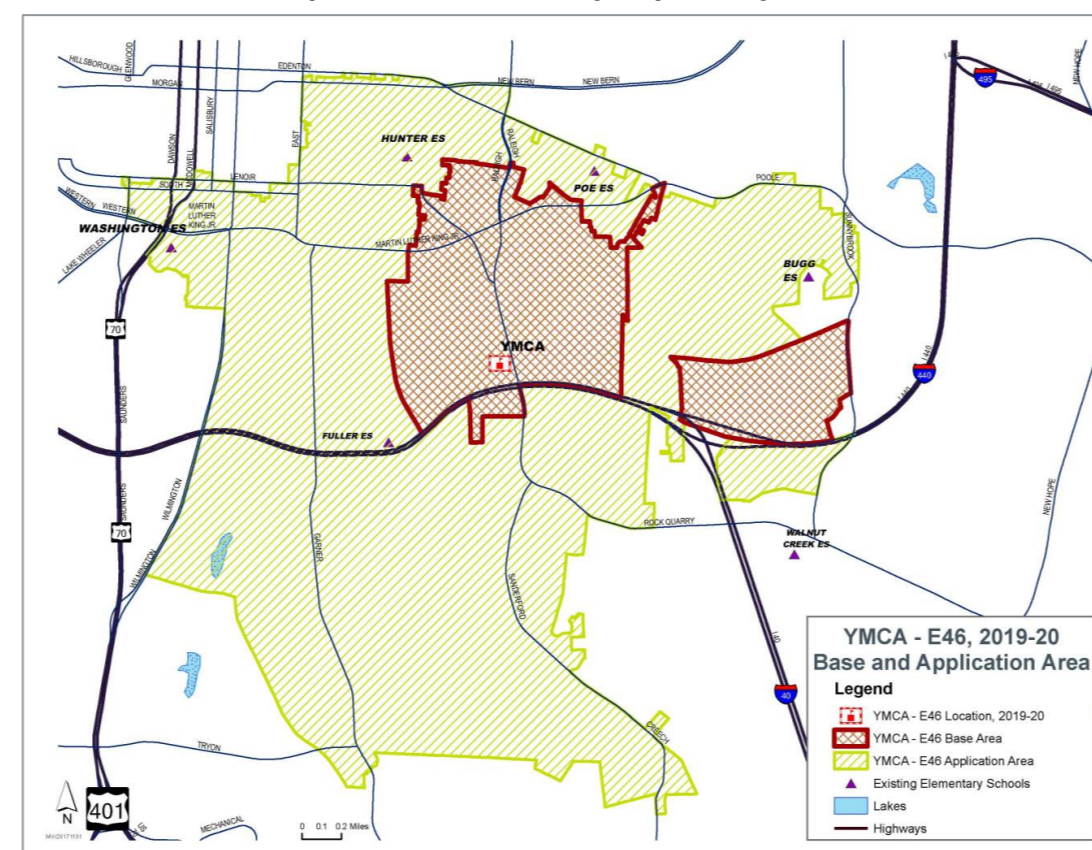
## Apex Friendship Middle School (D3)



## South Garner High School (D1)



## E46 – “YMCA” Elementary School (2019-20) (D1)

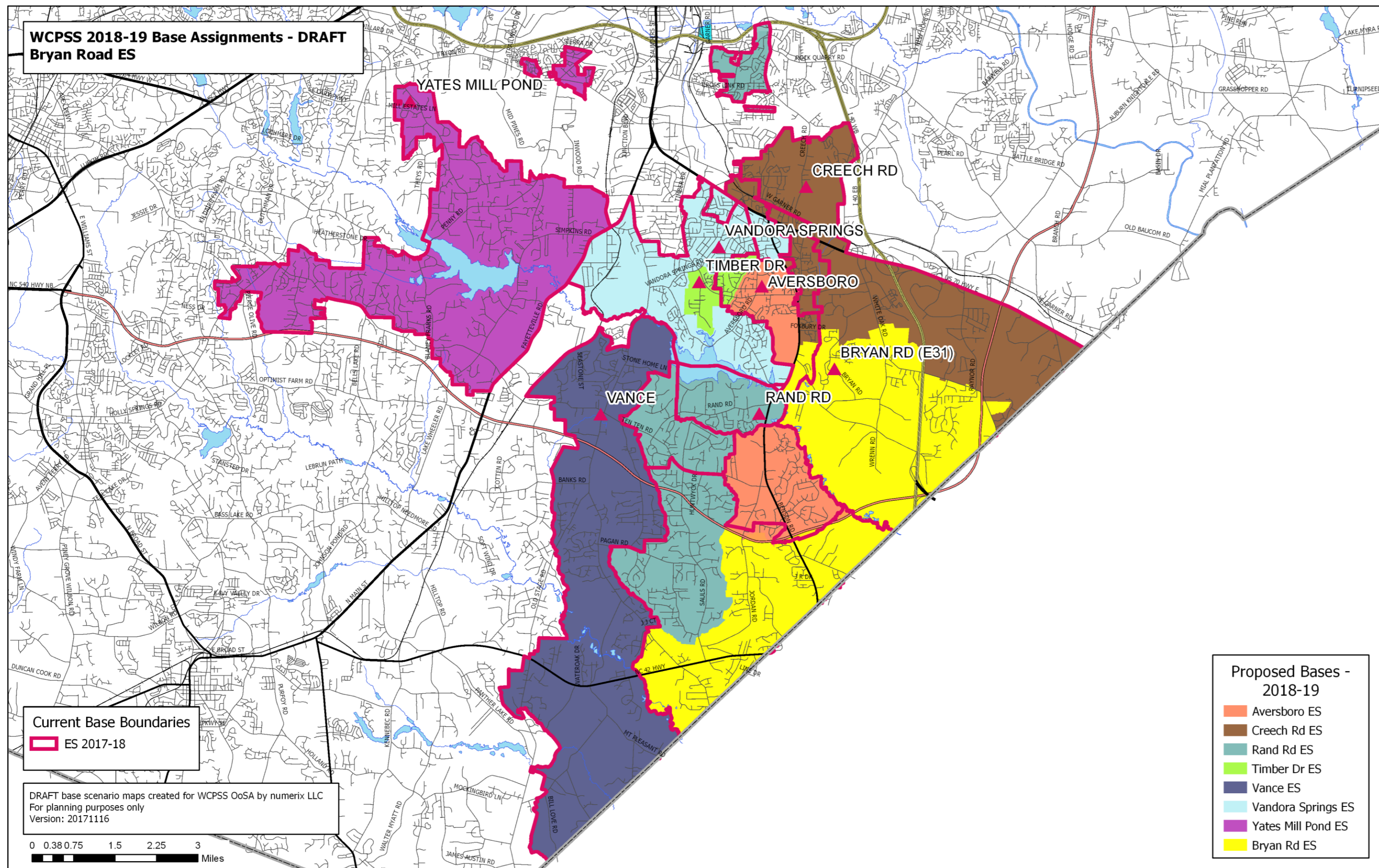


## Recommendation:

- Approve** proposed Base Attendance Areas
- for South Garner HS and E46–“YMCA” ES (Draft 1),
  - for Bryan Road ES (Draft 2), and
  - for Buckhorn Creek ES and Apex Friendship MS (Draft 3).

# New School – Bryan Road ES (2018-19)

## Proposed 2018-19 Base Attendance Areas



**Recommendation:**  
**Approve** proposed Base Attendance Areas for Bryan Road Elementary School and surrounding schools, as presented in Draft 2.

# New School – Bryan Road ES (2018-19)

2016-17 Base School	Capacity	Capacity w/ Trailers	2018-19 Util	2018-19 Util w/ Trl	2020-21 Util	2020-21 Util w/ Trl	Res	Academic Proficiency (Grades 3-5)			Actual
								Base	Non-Base	Agg	
AVERSBORO ES	528	608	111%	97%	115%	100%	62%	57%	51%	54%	54%
CREECH ROAD ES	508	608	143%	119%	162%	136%	51%	39%	39%	39%	38%
RAND ROAD ES	454	614	136%	100%	142%	105%	65%	67%	71%	68%	70%
TIMBER DRIVE ES	500	680	131%	96%	134%	99%	41%	36%	59%	49%	49%
VANCE ES	306	426	178%	128%	194%	139%	65%	61%	50%	59%	59%
VANDORA SPRINGS ES	662	662	85%	85%	87%	87%	53%	51%	43%	47%	47%
YATES MILL POND ES	508	508	123%	123%	122%	122%	66%	58%	62%	59%	58%
BRYAN ROAD ES (E31)											
	<b>3466</b>	<b>4106</b>	<b>125%</b>	<b>105%</b>	<b>131%</b>	<b>111%</b>					

2018-19 Base School	Capacity	Capacity w/ Trailers	2018-19 Util	2018-19 Util w/ Trl	2020-21 Util	2020-21 Util w/ Trl	Res	Academic Proficiency (Grades 3-5)		
								Base	Non-Base	Agg
AVERSBORO ES	528	608	97%	84%	101%	88%	65%	60%	51%	55%
CREECH ROAD ES	508	608	131%	110%	144%	120%	43%	39%	39%	39%
RAND ROAD ES	454	614	134%	99%	137%	101%	54%	53%	71%	59%
TIMBER DRIVE ES	500	680	96%	70%	95%	70%	59%	53%	59%	58%
VANCE ES	306	426	169%	121%	185%	133%	68%	64%	50%	62%
VANDORA SPRINGS ES	662	662	94%	94%	96%	96%	50%	47%	43%	45%
YATES MILL POND ES	508	508	116%	116%	114%	114%	67%	58%	62%	59%
BRYAN ROAD ES (E31)	662	662	64%	64%	76%	76%	61%	55%	n/a	n/a
	<b>4128</b>	<b>4768</b>	<b>107%</b>	<b>93%</b>	<b>113%</b>	<b>97%</b>				

**PROFICIENCY LEGEND:**

*Res = Mean proficiency of students residing in base*

*Base = Mean proficiency of base students in base*

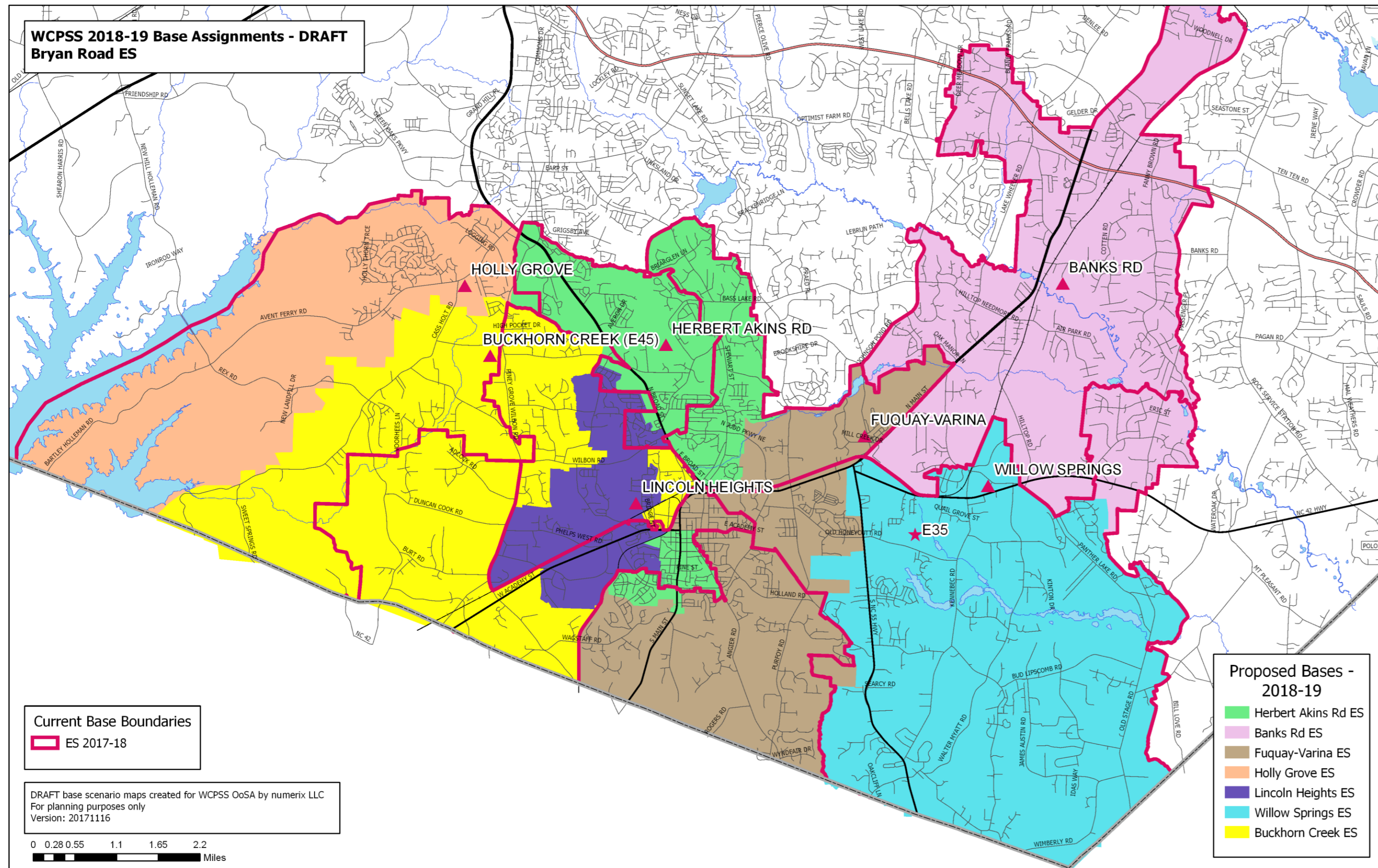
*Non-Base = Mean proficiency of non-base students*

*Agg = Aggregate mean proficiency of base and non-base students*

*Actual = Reading/English proficiency by school*

# New School – Buckhorn Creek ES (2018-19)

## Proposed 2018-19 Base Attendance Areas



### Recommendation:

**Approve** proposed Base Attendance Areas for Buckhorn Creek Elementary School and surrounding schools, as presented in Draft 3.

**School Calendar:** Staff is still reviewing the possibility of opening the school as a year-round school.

# New School – Buckhorn Creek ES (2018-19)

2016-17 Base School	Capacity	Capacity w/ Trailers	2018-19 Util	2018-19 Util w/ Trl	2020-21 Util	2020-21 Util w/ Trl	Res	Academic Proficiency (Grades 3-5)			Actual
								Base	Non-Base	Agg	
HERBERT AKINS RD ES	1032	1032	111%	111%	122%	122%	69%	69%	78%	72%	73%
BANKS ROAD ES	980	980	82%	82%	92%	92%	64%	68%	77%	70%	70%
FUQUAY-VARINA ES	506	806	184%	115%	193%	121%	66%	61%	68%	63%	64%
HOLLY GROVE ES	902	962	147%	138%	162%	152%	83%	84%	85%	84%	85%
LINCOLN HEIGHTS ES	528	528	96%	96%	102%	102%	61%	36%	36%	36%	37%
WILLOW SPRINGS ES	515	835	235%	145%	254%	156%	75%	80%	86%	81%	82%
BUCKHORN CREEK ES (E45)											
	<b>4463</b>	<b>5143</b>	<b>133%</b>	<b>115%</b>	<b>144%</b>	<b>125%</b>					

2018-19 Base School	Capacity	Capacity w/ Trailers	2018-19 Util	2018-19 Util w/ Trl	2020-21 Util	2020-21 Util w/ Trl	Res	Academic Proficiency (Grades 3-5)		
								Base	Non-Base	Agg
HERBERT AKINS RD ES	1032	1032	114%	114%	125%	125%	69%	67%	78%	71%
BANKS ROAD ES	980	980	93%	93%	103%	103%	66%	69%	77%	71%
FUQUAY-VARINA ES	506	806	164%	103%	165%	103%	71%	68%	68%	68%
HOLLY GROVE ES	902	962	120%	113%	132%	123%	82%	84%	85%	84%
LINCOLN HEIGHTS ES	528	528	121%	121%	129%	129%	64%	64%	36%	47%
WILLOW SPRINGS ES	515	835	184%	114%	206%	127%	74%	79%	86%	81%
BUCKHORN CREEK ES (E45)	662	662	84%	n/a	92%	n/a	70%	67%	n/a	n/a
	<b>5125</b>	<b>5805</b>	<b>120%</b>	<b>106%</b>	<b>130%</b>	<b>115%</b>				

**PROFICIENCY LEGEND:**

*Res = Mean proficiency of students residing in base*

*Base = Mean proficiency of base students in base*

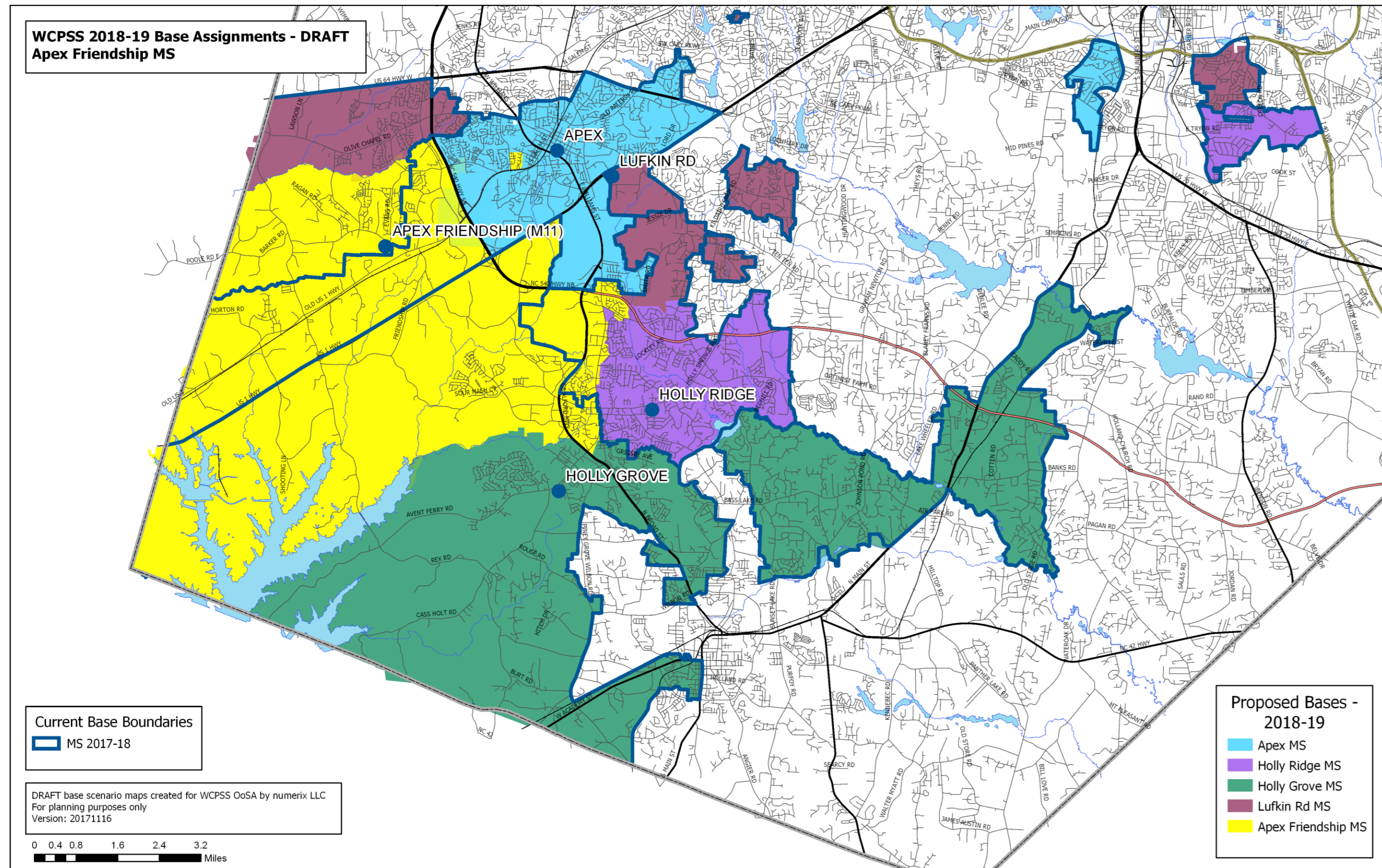
*Non-Base = Mean proficiency of non-base students*

*Agg = Aggregate mean proficiency of base and non-base students*

*Actual = Reading/English proficiency by school*

# New School – Apex Friendship MS (2018-19)

## Proposed 2018-19 Base Areas



**Recommendation:**  
**Approve** proposed Base Attendance Areas for Apex Friendship Middle School and surrounding schools, as presented in Draft 3.

# New School – Apex Friendship MS (2018-19)

2016-17 Base School	Capacity	Capacity w/ Trailers	2018-19 Util	2018-19 Util w/ Trl	2020-21 Util	2020-21 Util w/ Trl	Res	Academic Proficiency (Grades 6-8)			Actual
								Base	Non-Base	Agg	
APEX MS	1178	1178	110%	110%	113%	113%	81%	79%	79%	79%	79%
HOLLY RIDGE MS	952	1316	142%	103%	147%	106%	71%	69%	68%	69%	68%
HOLLY GROVE MS	1688	1688	108%	108%	117%	117%	74%	75%	79%	76%	76%
LUFKIN ROAD MS	1246	1246	90%	90%	92%	92%	75%	77%	87%	82%	82%
APEX FRIENDSHIP MS (M11)											
	<b>5064</b>	<b>5428</b>	<b>110%</b>	<b>103%</b>	<b>116%</b>	<b>108%</b>					

2018-19 Base School	Capacity	Capacity w/ Trailers	2018-19 Util	2018-19 Util w/ Trl	2020-21 Util	2020-21 Util w/ Trl	Res	Academic Proficiency (Grades 6-8)		
								Base	Non-Base	Agg
APEX MS	1178	1178	99%	99%	101%	101%	80%	79%	79%	79%
HOLLY RIDGE MS	952	1316	120%	87%	124%	89%	74%	72%	68%	71%
HOLLY GROVE MS	1688	1688	97%	97%	100%	100%	74%	75%	79%	76%
LUFKIN ROAD MS	1246	1246	85%	85%	86%	86%	68%	69%	87%	79%
APEX FRIENDSHIP MS (M11)	1280	1280	54%	54%	65%	65%	78%	76%	n/a	n/a
	<b>6344</b>	<b>6708</b>	<b>90%</b>	<b>85%</b>	<b>94%</b>	<b>89%</b>				

**PROFICIENCY LEGEND:**

*Res = Mean proficiency of students residing in base*

*Base = Mean proficiency of base students in base*

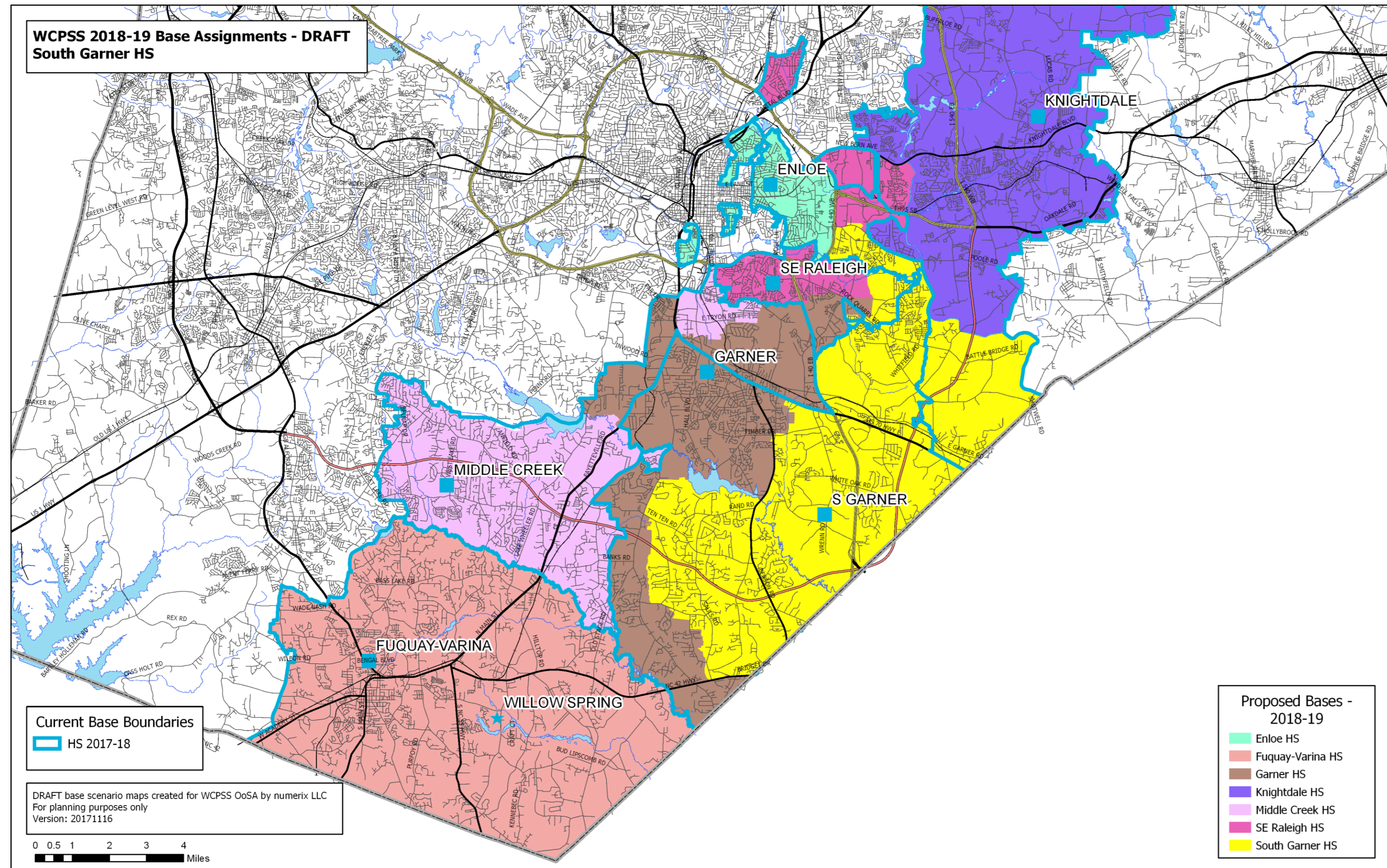
*Non-Base = Mean proficiency of non-base students*

*Agg = Aggregate mean proficiency of base and non-base students*

*Actual = Reading/English proficiency by school*

# New School – South Garner HS (2018-19)

## Proposed 2018-19 Base Areas



**Recommendation:**  
**Approve** proposed Base Attendance Areas for South Garner High School and surrounding schools, as presented in Draft 1.

# New School – South Garner HS (2018-19)

2016-17 Base School	Capacity	Capacity w/ Trailers	2018-19 Util	2018-19 Util w/ Trl	2020-21 Util	2020-21 Util w/ Trl	Res	Academic Proficiency (Grade 10)			Actual
								Base	Non-Base	Agg	
ENLOE HS	2453	2453	107%	107%	109%	109%	43%	40%	94%	73%	75%
FUQUAY-VARINA HS	1723	2251	135%	103%	140%	107%	74%	73%	0%	73%	71%
GARNER HS	2318	3110	115%	85%	113%	84%	55%	53%	45%	52%	51%
KNIGHTDALE HS	1672	1864	103%	92%	112%	100%	50%	41%	52%	42%	41%
MIDDLE CREEK HS	1680	2304	141%	103%	143%	104%	72%	74%	77%	74%	72%
SE RALEIGH HS	1598	1910	96%	80%	96%	80%	43%	40%	54%	44%	44%
SOUTH GARNER HS (H8)											
	<b>11444</b>	<b>13892</b>	<b>116%</b>	<b>95%</b>	<b>118%</b>	<b>97%</b>					

2018-19 Base School	Capacity	Capacity w/ Trailers	2018-19 Util	2018-19 Util w/ Trl	2020-21 Util	2020-21 Util w/ Trl	Res	Academic Proficiency (Grade 10)		
								Base	Non-Base	Agg
ENLOE HS	2453	2453	93%	93%	96%	96%	41%	38%	94%	78%
FUQUAY-VARINA HS	1723	2251	131%	100%	136%	104%	75%	73%	0%	73%
GARNER HS	2318	3110	73%	54%	72%	54%	56%	53%	45%	52%
KNIGHTDALE HS	1672	1864	94%	84%	100%	90%	48%	40%	52%	41%
MIDDLE CREEK HS	1680	2304	127%	93%	129%	94%	76%	78%	77%	78%
SE RALEIGH HS	1598	1910	98%	82%	98%	82%	45%	39%	54%	44%
SOUTH GARNER HS (H8)	2262	2262	78%	78%	78%	78%	52%	48%	n/a	n/a
	<b>13706</b>	<b>16154</b>	<b>97%</b>	<b>82%</b>	<b>99%</b>	<b>84%</b>				

**PROFICIENCY LEGEND:**

*Res = Mean proficiency of students residing in base*

*Base = Mean proficiency of base students in base*

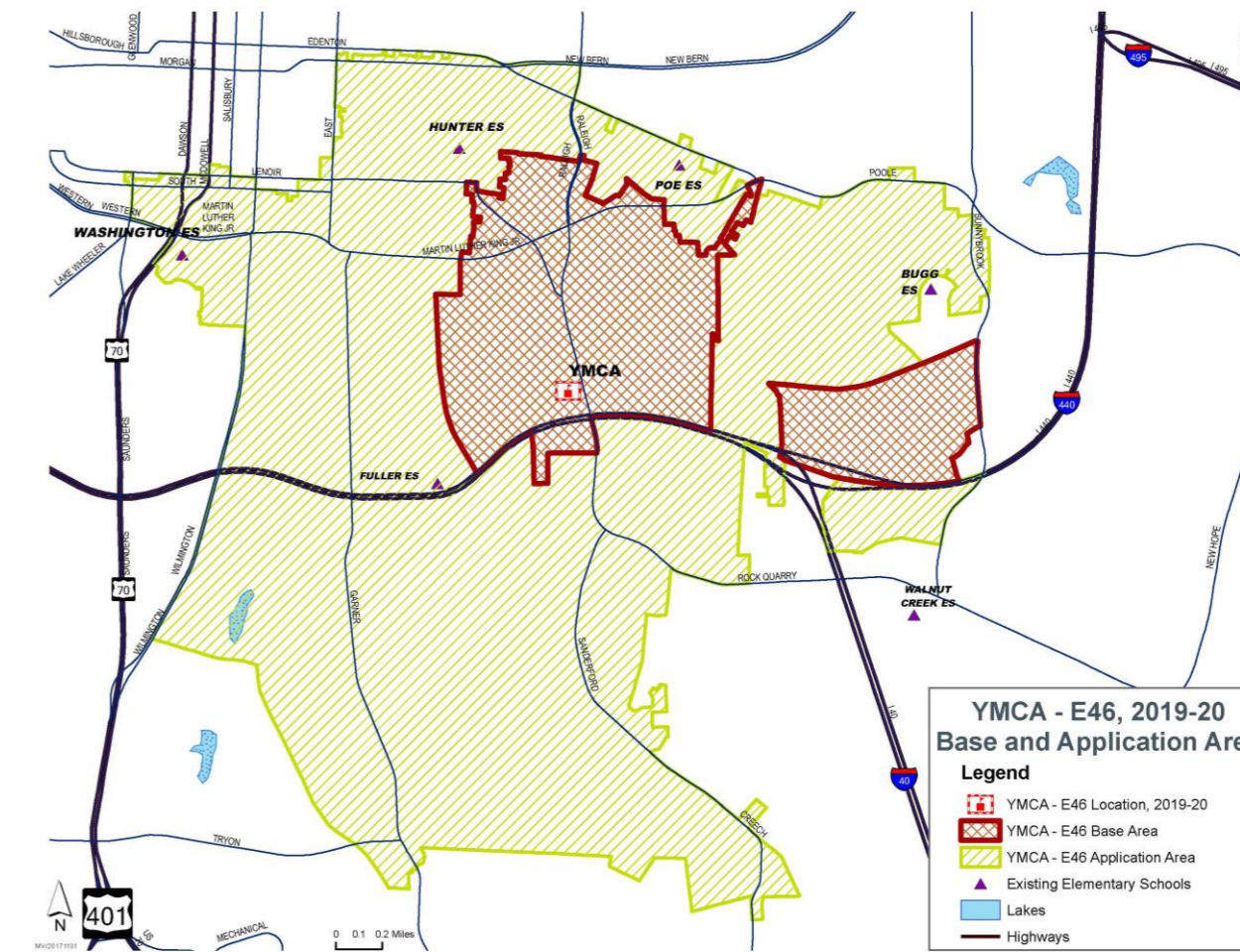
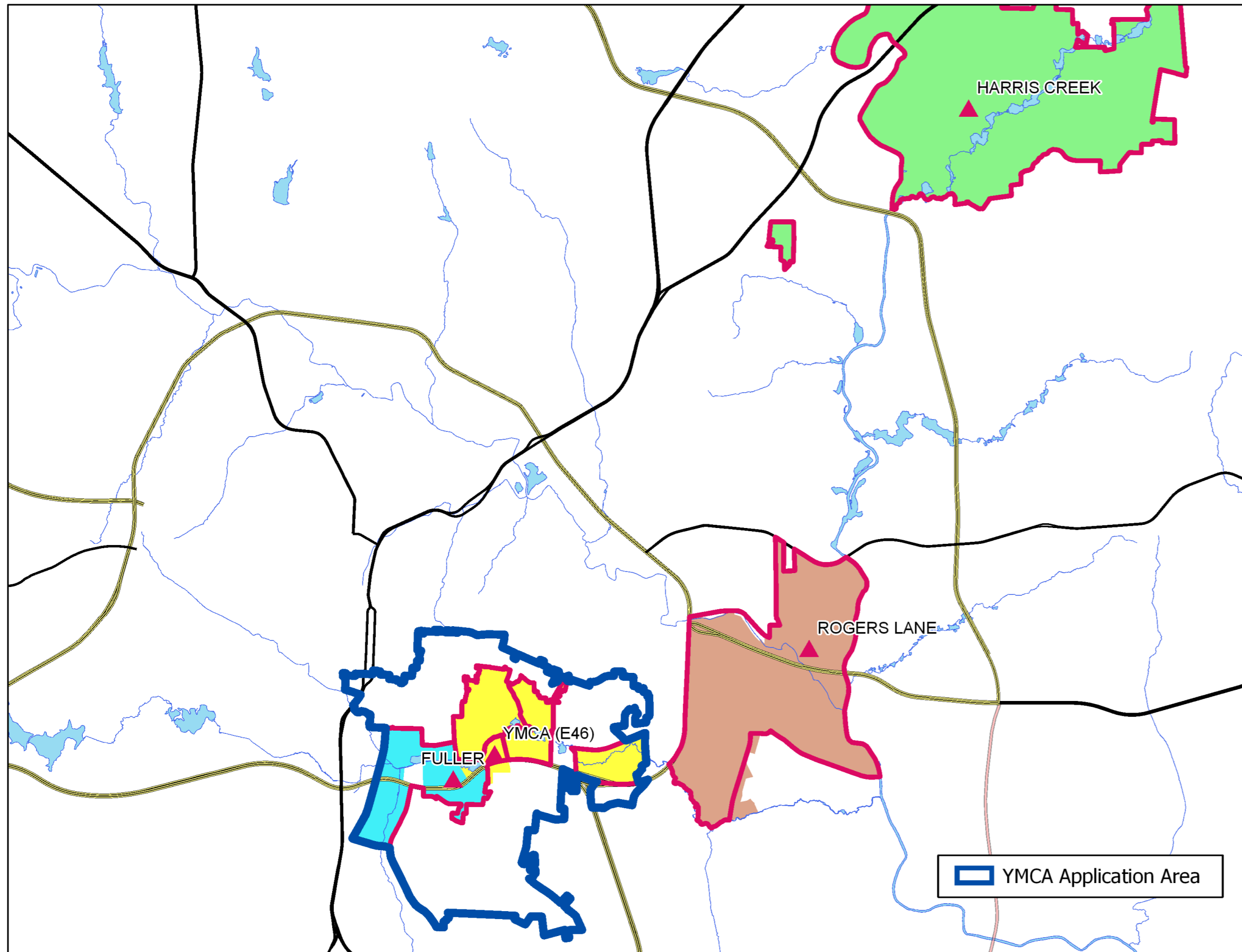
*Non-Base = Mean proficiency of non-base students*

*Agg = Aggregate mean proficiency of base and non-base students*

*Actual = Reading/English proficiency by school*

# New School – YMCA ES (2019-20)

## Proposed 2018-19 Base Areas



### Recommendation:

**Approve** proposed Base Attendance Areas for E46 – “YMCA” Elementary School and surrounding schools, as presented in Draft 1.

# New School – YMCA ES (2019-20)

2016-17 Base School	Capacity	Capacity w/ Trailers	2018-19 Util		2020-21 Util		Res	Academic Proficiency (Grades 3-5)			
			2018-19 Util	w/ Trl	2020-21 Util	w/ Trl		Base	Non-Base	Agg	Actual
FULLER ES	302	462	191%	125%	191%	125%	30%	30%	73%	64%	65%
HARRIS CREEK ES	824	944	131%	114%	130%	113%	63%	64%	74%	65%	66%
ROGERS LANE ES	636	636	105%	105%	106%	106%	39%	33%	n/a	n/a	n/a
YMCA ES (E46)											
	<b>1762</b>	<b>2042</b>	<b>106%</b>	<b>94%</b>	<b>106%</b>	<b>94%</b>					

2019-20 Base School	Capacity	Capacity w/ Trailers	2018-19 Util		2020-21 Util		Res	Academic Proficiency (Grades 3-5)		
			2018-19 Util	w/ Trl	2020-21 Util	w/ Trl		Base	Non-Base	Agg
FULLER ES	302	462	191%	125%	191%	125%	30%	30%	73%	64%
HARRIS CREEK ES	824	944	127%	111%	127%	110%	64%	65%	74%	66%
ROGERS LANE ES	636	636	80%	80%	81%	81%	40%	73%	n/a	n/a
YMCA ES (E46)	426	426	61%	61%	61%	61%	38%	35%	n/a	n/a
	<b>2188</b>	<b>2468</b>	<b>109%</b>	<b>97%</b>	<b>109%</b>	<b>97%</b>				

\* YMCA membership estimates do not include application students. 75 students to be housed on campus have been added to base membership.

**PROFICIENCY LEGEND:**

Res = Mean proficiency of students residing in base

Base = Mean proficiency of base students in base

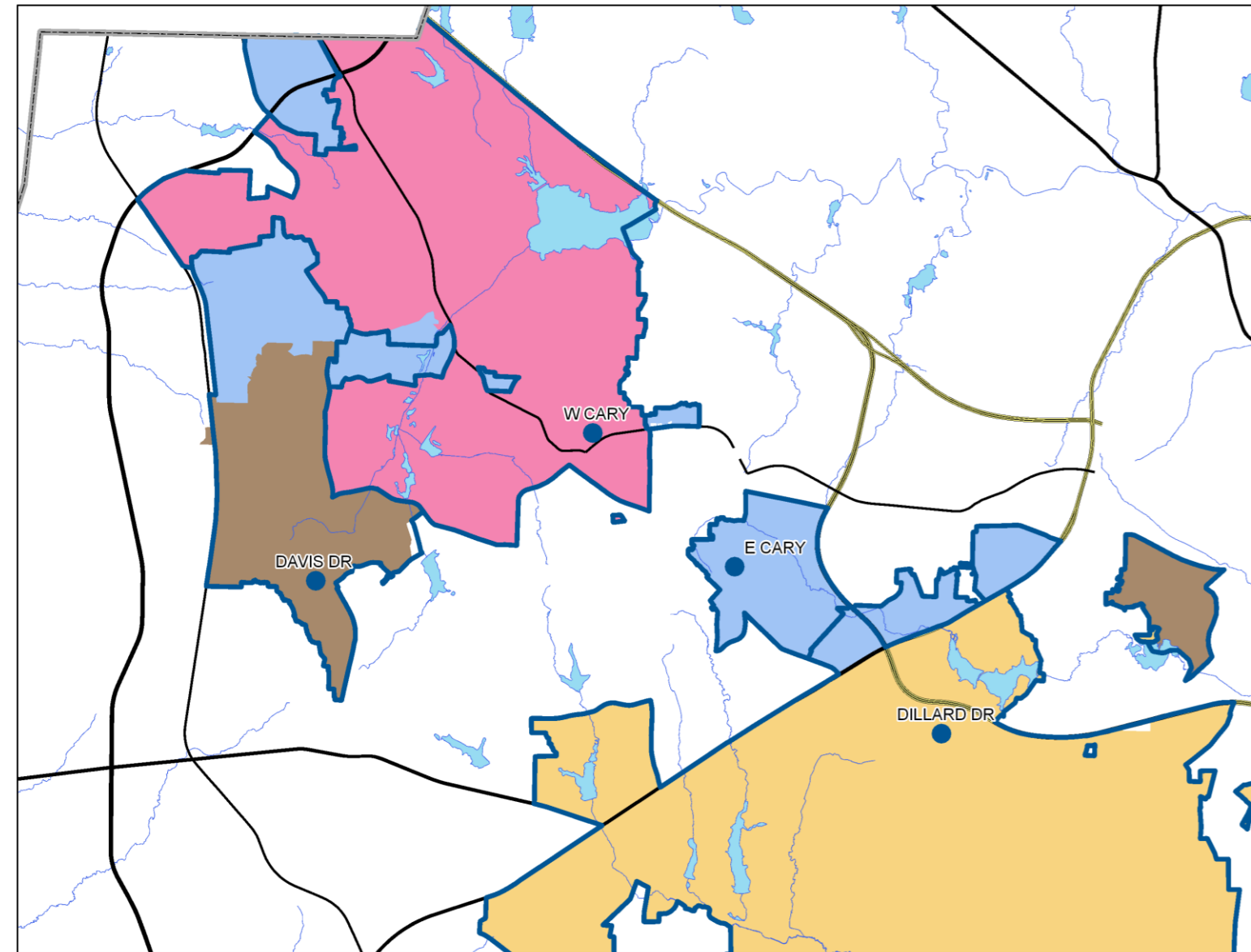
Non-Base = Mean proficiency of non-base students

Agg = Aggregate mean proficiency of base and non-base students

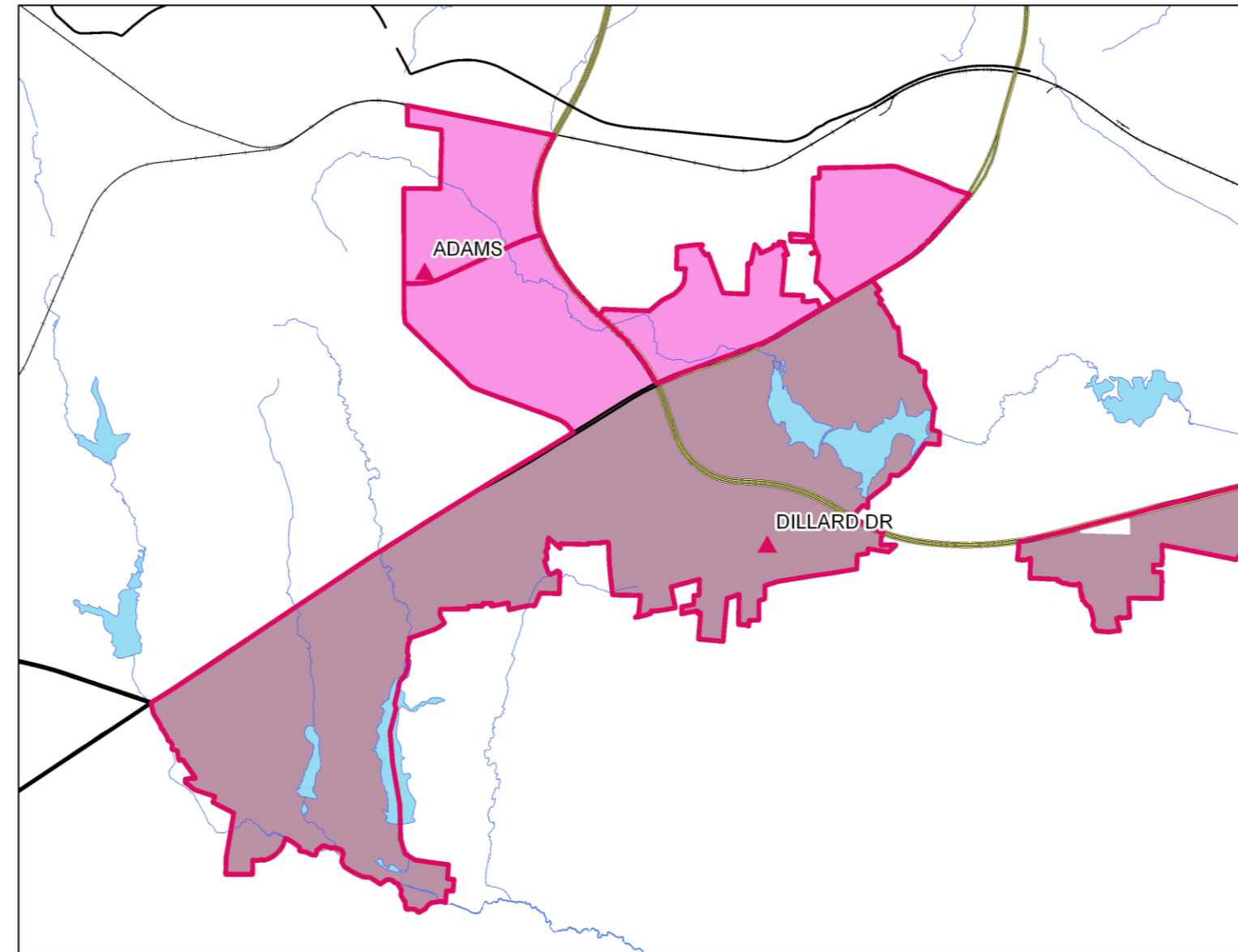
Actual = Reading/English proficiency by school

# Operational Efficiency

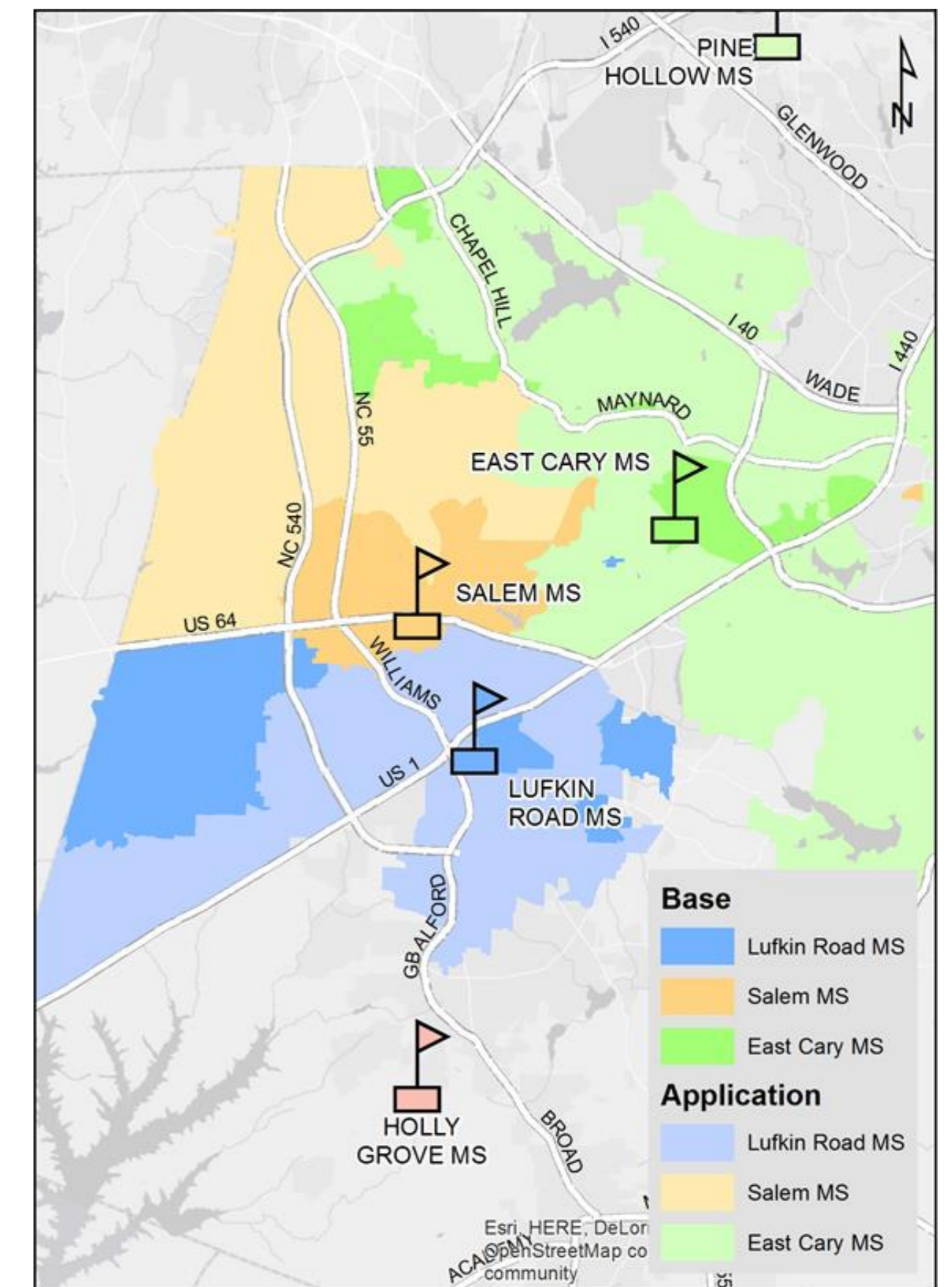
Proposed increase of Base Attendance Area for Adams ES



Proposed increase of Base Attendance Area for East Cary MS



Proposed change of Year-Round Application Areas for East Cary MS, Lufkin Road MS, and Salem MS

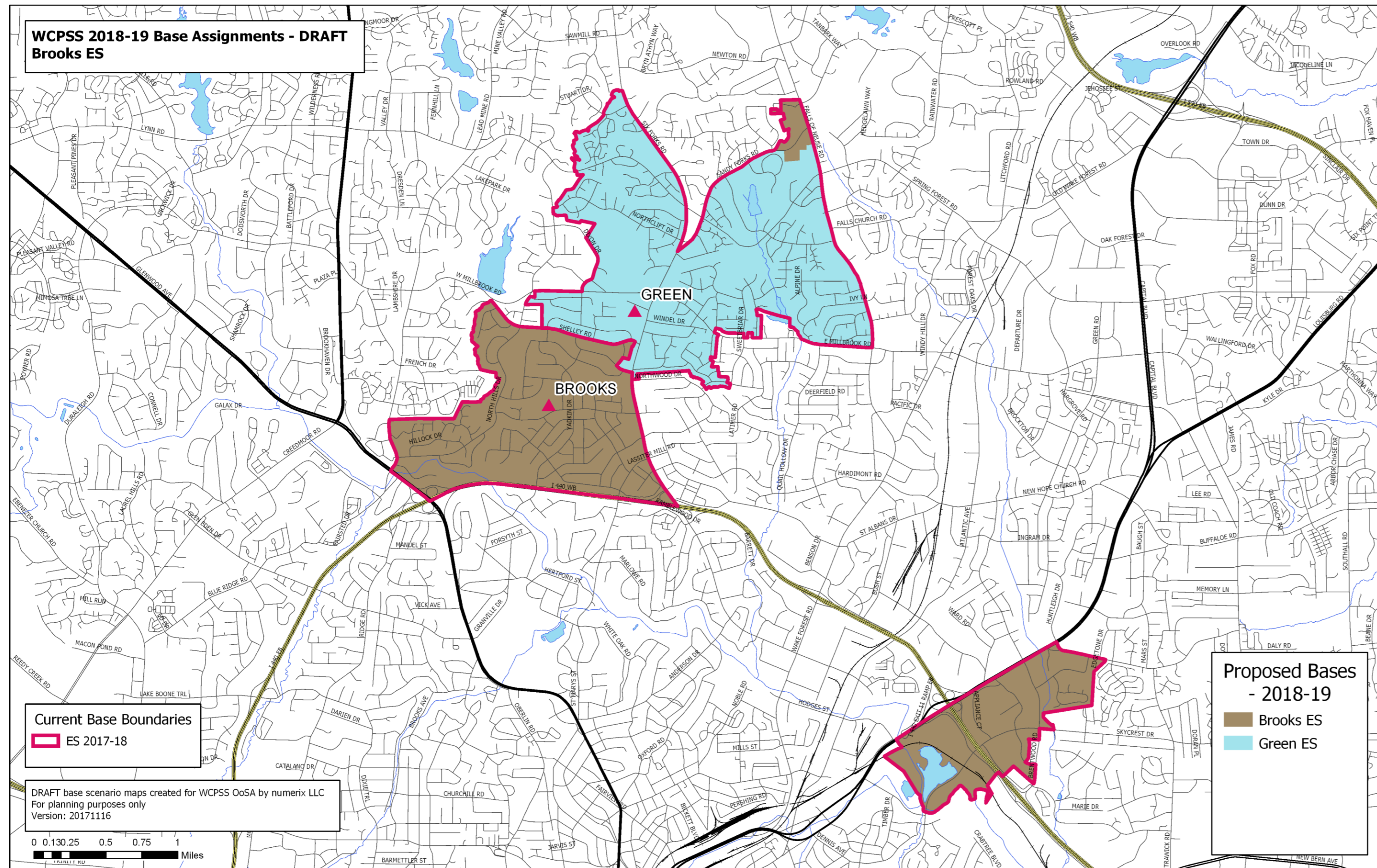


## Recommendation:

**Remove** these proposed changes from the 2018-19 WCPSS ENROLLMENT PLAN

# Operational Efficiency - Increase Base Attendance Area – Brooks ES

## Proposed 2018-19 Base Attendance Areas



**Recommendation:**  
**Approve** proposed increase in Base Attendance Area for Brooks ES, as presented in **Draft 1**.

# Operational Efficiency - Increase Base Attendance Area – Brooks ES

2016-17 Base School	Capacity	Capacity w/ Trailers	2018-19 Util	2018-19 Util w/ Trl	2020-21 Util	2020-21 Util w/ Trl	Res	Academic Proficiency (Grades 3-5)			Actual
								Base	Non-Base	Agg	
BROOKS ES	584	584	91%	91%	85%	85%	68%	68%	81%	74%	72%
GREEN ES	566	566	97%	97%	94%	94%	47%	39%	64%	45%	45%
	<b>1150</b>	<b>1150</b>	<b>94%</b>	<b>94%</b>	<b>90%</b>	<b>90%</b>					

2018-19 Base School	Planned Capacity		2018-19 Utilization		2020-21 Utilization		Res	Academic Proficiency (Grades 3-5)		
								Base	Non-Base	Agg
BROOKS ES	584	584	106%	106%	101%	101%	61%	62%	81%	70%
GREEN ES	566	566	81%	81%	78%	78%	50%	41%	64%	47%
	<b>1150</b>	<b>1150</b>	<b>94%</b>	<b>94%</b>	<b>90%</b>	<b>90%</b>				

**PROFICIENCY LEGEND:**

Res = Mean proficiency of students residing in base  
 Base = Mean proficiency of base students in base  
 Non-Base = Mean proficiency of non-base students  
 Agg = Aggregate mean proficiency of base and non-base students  
 Actual = Reading/English proficiency by school

# Grandfathering - Changes to Draft 1

## Elementary School and Middle School Students

- To utilize new school capacity and meet State mandated class-size reduction for grades K-3:
  - Elementary school and middle school students who experience an assignment change as a result of this enrollment proposal, and are rising into **grades 5 and 8**, are eligible to request a **transfer** to “grandfather” at their current assignment. These requests will be approved.
  - Grandfather requests can be made through the School Transfer process and grandfathered students will **not receive district transportation.**
  - **Siblings of eligible grandfathered students will be eligible to grandfather for one (1) year only with their rising 5<sup>th</sup> grade, or 8<sup>th</sup> grade sibling.**

# Grandfathering (cont.) - Changes to Draft 1

## High School Students

Students who experience an assignment change as a result of this proposal

- From **an existing school to an existing school**, all current students in 9, 10, and 11 grades are eligible to request a **transfer** to “grandfather” at their current assignment. These requests will be approved.
  - Students who request to grandfather are **transfer** students and **no transportation will be provided**.
  - **Siblings of “grandfathered” students are eligible to grandfather.**
- From **existing school to a new school**:  
South Garner High will open with grades 9 and 10 only for the 2018-19 school year. Any student rising into grade 11 or 12 living in the base attendance area of South Garner High will continue at their current high school with their current level of transportation. 9<sup>th</sup> and 10<sup>th</sup> grade students are not eligible to “grandfather” unless they have an 11<sup>th</sup> or 12<sup>th</sup> grade sibling.
  - Siblings of “grandfathered” students can request a **transfer** to attend the same school with their sibling. These requests will be approved.
  - Students who request to grandfather are **transfer** students.

# Timeline of the Enrollment Process

September/October 2017	<p><b>BoE Advisory Committee Meetings</b> – staff presents Draft 1; solicits feedback:          District 1 - September 25, District 2 - October 11, District 5 - September 28,          District 6 - September 22, District 7 - October 11, District 8 - October 2</p> <p><b>General Public Information Sessions</b> on:          October 6 - Holly Grove MS, and</p>
October 17, 2017	<b>BoE Work Session</b> – staff presents Draft 2 of the 2018-19 enrollment plan; continue to solicit feedback through online forums
November 7, 2017	<b>BoE Work Session</b> – staff presents feedback from November 13th Public Meeting and Draft 3 of the 2018-19 enrollment plan;
November 21, 2017	<p><b>BoE Work Session</b> – staff presents feedback from November 13th Public Meeting, and Draft 3 – Continued Discussion of the 2018-19 enrollment plan</p> <p><b>BoE Meeting</b> – public hearing of the 2018-19 enrollment plan</p>
November 28, 2017	<b>BoE Work Session</b> – (tentative)
December 5, 2017	<b>BoE Meeting</b> – approval of the 2018-19 enrollment plan