



WAKE COUNTY
PUBLIC SCHOOL SYSTEM



SOUTHEAST
RALEIGH
PROMISE



WCPSS, SERP, YMCA Partnership Update: December 2017

A joint WCPSS, SERP, YMCA leadership team convened to develop a proposed strategy. A joint WCPSS, SERP, YMCA leadership team was convened to develop a proposed strategy.

Team Membership		
Kia Baker	Brittany Edwards	Cathy Moore
Glenn Carrozza	David Edwards	Dalia Place
Beth Cochran	Kelly Harvell	Nicole Priestly
	Jessie Hathcock	Marcella Rorie
Julie Crain	Dexter Herbert	Colon Willoughby
Dawn Dawson	Kirby Jones	Michael Hokenburg**
Pam Doak	Kim Keith	Brenda Elliot*
Paul Domenico	Jon Mills	

Background

This school will serve students in SE Raleigh who reside within the Rock Quarry Road Corridor and in 6 census tracts with high levels of poverty

The school will be co-located on Rock Quarry Road with the SE Raleigh YMCA

The committee began work in October 2016 to research and discuss topics including academic programming, student assignment, principal and student profiles, facilities, and budget

The targeted opening date for the school is Fall 2019

Certain values emerged . . .

EMPHASIS ON:

- Community Responsive Project Based Learning
- Leadership and Character Development
- Culture of Innovation
- Personalization
- Out-of-school Experiences
- Daily Physical Education/Swimming

Key Strategic Decisions:

Our goal is to create a high quality Pre-K through 5 environment that will effectively serve children in the SERP attendance zone.

INSTRUCTIONAL MODEL

*What is the school's
instructional
approach and
culture?*

OPERATIONS AND FACILITIES

*How will the
school operate?*

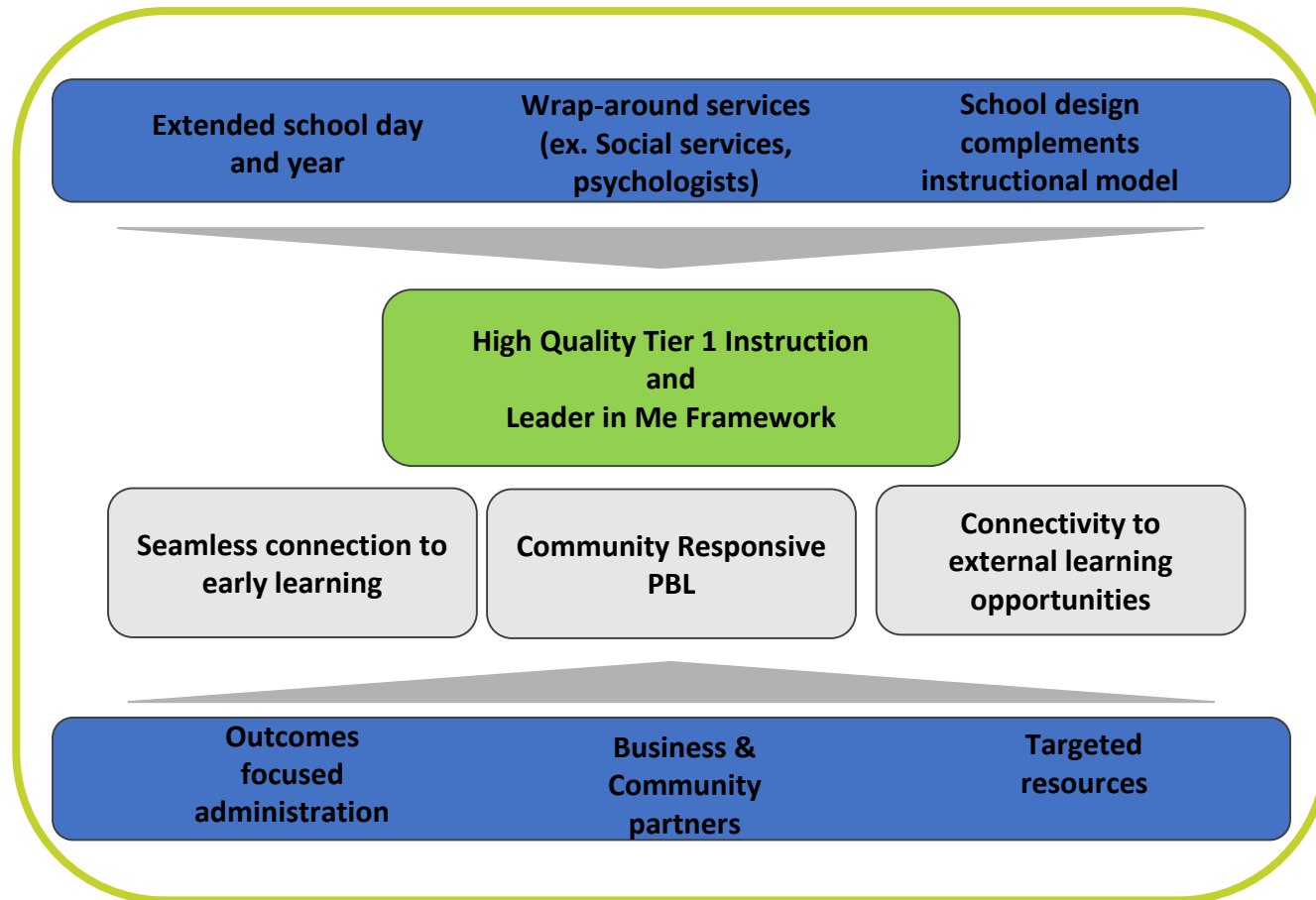
ATTENDANCE ZONE

*Which children will
have preference?*

Research and experience suggest that some of the most critical components of academic success for low income children are:

- Strong Leadership
- Extended school day and year
- Multi-Tiered Systems of Support (MTSS)
- Quality teacher professional development
- Low teacher turnover rates
- Low student transiency rates
- Quality facilities and resources
- Partnering and wrap around services
- Focus on nutrition and health (i.e. 3 meals a day)
- Reduction in sources of toxic stress (e.g. ACES Adverse Childhood Experiences)

Proposed Instructional Model



Success Requires Flexibility

- Physical Education Every Day
- Swim lessons for every student
- Framework for Community participation
- Proposed additional administrative, specialist, and support staff
- Proposed salary supplements
- Extended professional development
- Programming incorporating community garden and healthful living practices
- An emphasis on integrating volunteers and community

Winning Combination

Principal	Teachers	Students
Growth Mindset, Data Driven	Growth Mindset, Data Driven	Forward/future thinkers
Problem solver - enlists the right people	Resourceful, Leadership skills	Confidence to meet high expectations & the skills to do so
Leadership that inspires a collaborative work environment resulting in innovation and creative thinking from staff and students	Builds relationships and communicates w/students, parents, and community	Coping skills (grit, resilience)
Strong Fiscal management	Strong in social/emotional development to build strong communicators and collaborators	Strong foundation in core instructional areas
Familiarity with Title I	Strong ability to effectively teach students w/various learning styles	Creative innovators & critical thinkers in their own communities (indigenous leaders)
Instructional knowledge that will foster a collaborative learning environment and build a community of creative, critical thinkers	Strong pedagogically (PBL proficient) and in Content Knowledge embedding the 4Cs in learning experiences	Ability to compete with students anywhere in the district
Strong professional development of staff	Lifelong learner	Global world view forming strong communicators and collaborators
Innovative, non-traditional style that promotes critical thinking and creativity among staff and students	Innovative, flexible thinker, and stays on the cutting edge fostering creativity and critical thinking	Outside the box experiences to build creativity and critical thinking
Multi year vision with strong skills for implementation	Alternative discipline techniques	Communication and collaboration skills built through strong character development

Operations and Facilities



Facilities Update

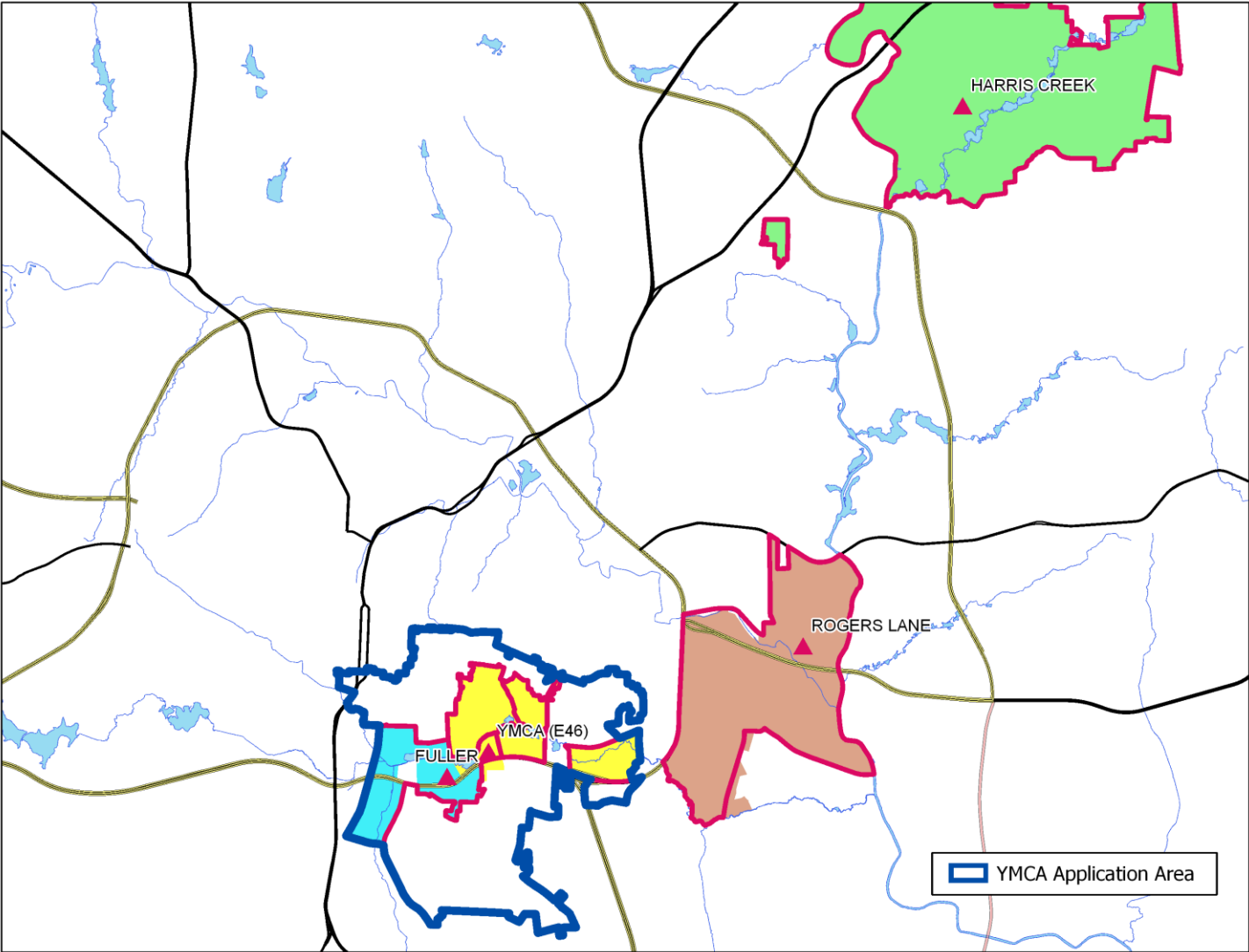
Different from other Wake County Public Elementary Schools:

- Full YMCA
- Pools & Swimming as part of Physical Education
- Additional Pre-K classrooms
- Rooftop Garden
- Shared spaces
- Community Kitchen

Shared space Includes:

- Dining
- Multiple Play Areas
- Play Fields and Physical Activity Space
- 5th Grade Classrooms

Attendance Zone



The school is a central element of broader neighborhood revitalization initiative.



- WCPSS School as a partner with:
 - Families
 - The YMCA
 - Early Learning Providers
 - Housing Management
 - Health Services Providers
 - Family Support Services

Next Steps

- Finalize funding and resources
- Begin to formalize community and partner agreements
- Begin identification of key staff
- Define community advisory group
- Design Marketing Campaign