

# SRCS Facilities Annual Report

August 27th, 2025

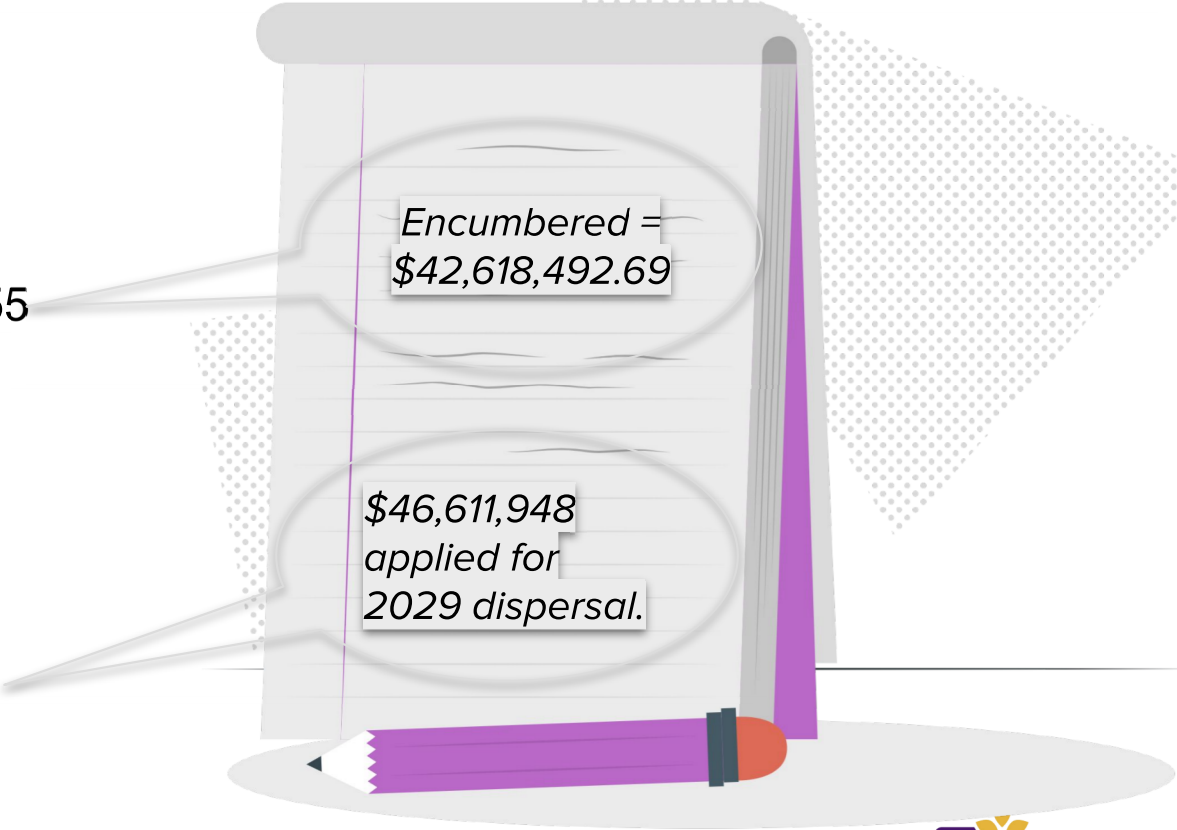


# Budget & Programming

---

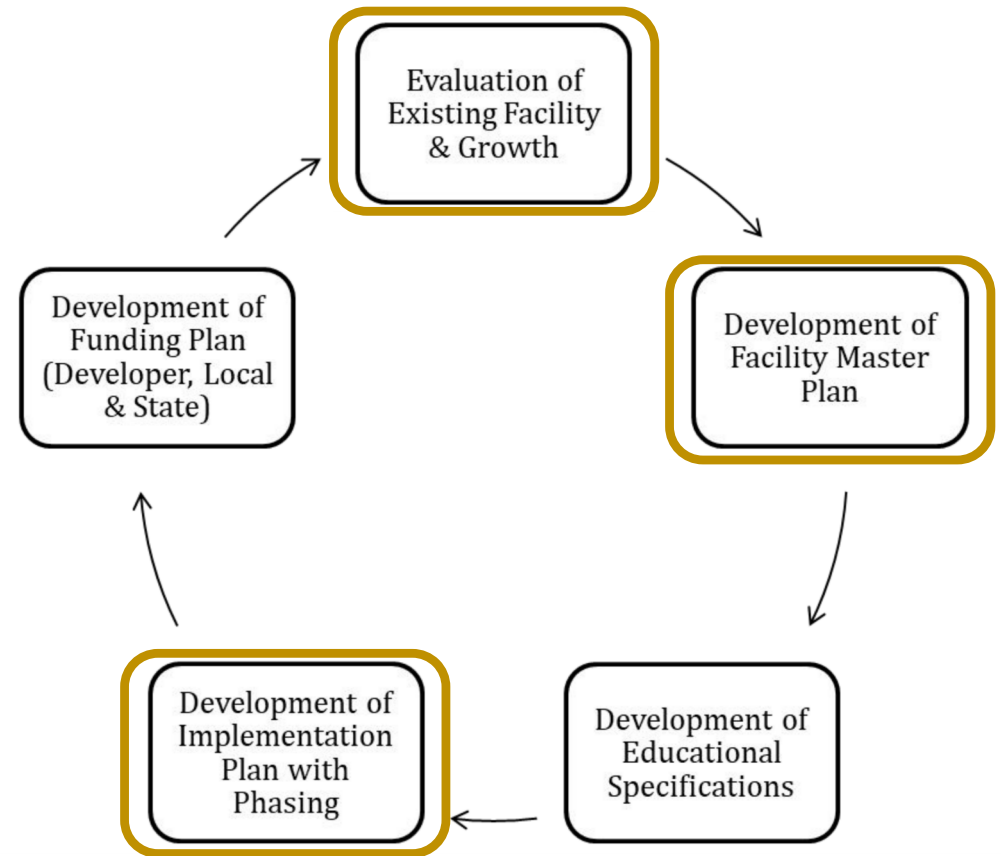
# FACILITIES BUDGET SUMMARY FY 24-25

<i>Fund</i>	<i>Balance</i>
Measure I&L	\$0
Measure C&G	\$420,815,755
Developer Fees	\$583,981
Deferred Maintenance	\$172,084
State Funds	\$0



# FMP Updates

- School Consolidation
- Community Engagement Meetings this Fall 2025
- Campus Plan Pages
- Implementation Plan Updates
- Bond Program Schedule
- Bond Program Cash Flow



# District Wide Initiatives

## New Furniture

New furniture in all classrooms and Administration buildings.

## Safety & Security

Perimeter fencing and gates and electronic access control will create a secure perimeter at each school campus.

## Classroom Modernization

Interior classroom paint, replacement of flooring and ceiling tile, and adding new classroom storage.

## Campus Improvements

Exterior painting, covered outdoor eating areas, new playgrounds, infrastructure & other site improvements.



# Implementation Plan Post School Consolidation...



# Project Recap 2024-2025

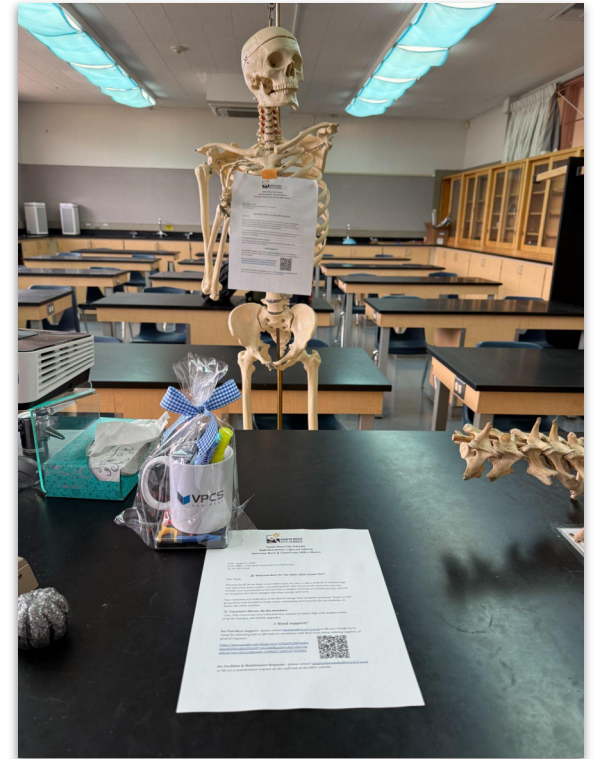
---

# SCHOOL CONSOLIDATION MOVES

<i>Project Name</i>	<i>Contracted Cost = Actual Cost</i>
<b>Albert Biella ES</b>	\$33,092.00
<b>Brook Hill ES</b>	\$31,706.00
<b>James Monroe ES</b>	\$18,120.00
<b>Herbert Slater MS</b>	\$46,840.00
<b>Santa Rosa MS</b>	\$26,080.00
<b>Montgomery HS</b>	\$5,330.00
<b>Santa Rosa HS</b>	\$20,010.00



# SCHOOL CONSOLIDATION MOVES



# INFRASTRUCTURE PROJECTS

<i>Project Name</i>	<i>Contracted Cost</i>	<i>Actual Cost</i>
<b>HVES AP Trenching</b>	\$320,000	<i>Pending</i>
<b>JMES Parking Lot</b>	\$629,338.70	<i>Pending</i>
<b>PHS Courtyard</b>	\$199,800.15	<b>\$172,437.36</b>
<b>PHS Tennis Court Fencing</b>	\$123,429.23	<i>Pending</i>
<b>PTES AP Trenching</b>	\$320,000	<i>Pending</i>



# INFRASTRUCTURE PROJECTS



*Hidden Valley ES*



*Piner High School*

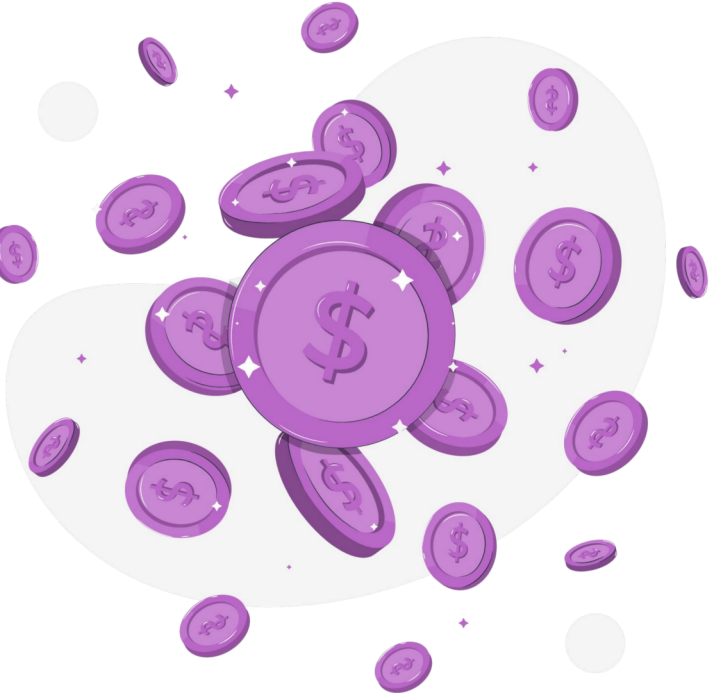


*James Monroe ES*



# DISTRICT WIDE EXTERIOR PAINTING PHASE 2

<i>Project Name</i>	<i>Contracted Cost</i>	<i>Actual Cost</i>
<b>Abraham Lincoln ES</b>	\$145,200.00	\$132,000.00
<b>Elsie Allen HS</b>	\$772,200.00	\$730,004.50
<b>Rincon Valley MS</b>	\$203,500.00	\$185,000.00



# DISTRICT WIDE EXTERIOR PAINTING PHASE 2



*Before*



*After*



*Before*



*After*

*Abraham Lincoln Elementary School*



# DISTRICT WIDE EXTERIOR PAINTING PHASE 2



*Before*



*After*

*Rincon Valley Middle School*



# DISTRICT WIDE EXTERIOR PAINTING PHASE 2



*Before*



*After*

*Elsie Allen  
High School*



# GYM FLOOR REFINISH & STRIPING

<i>Project Name</i>	<i>Contracted Cost</i>	<i>Actual Cost</i>
Montgomery HS	\$65,378.00	\$55,378.00
Rincon Valley MS	\$55,860.00	\$48,064.00
Santa Rosa HS	\$63,785.00	\$53,784.00



# GYM FLOOR REFINISH & STRIPING



*Before*



*After*

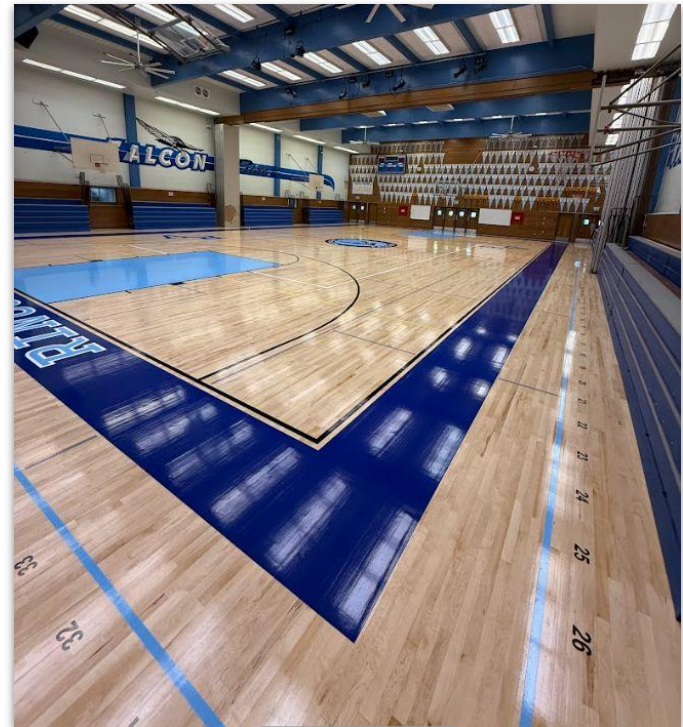
*Montgomery High School*



# GYM FLOOR REFINISH & STRIPING



*Before*



*After*

*Rincon Valley Middle School*



# GYM FLOOR REFINISH & STRIPING

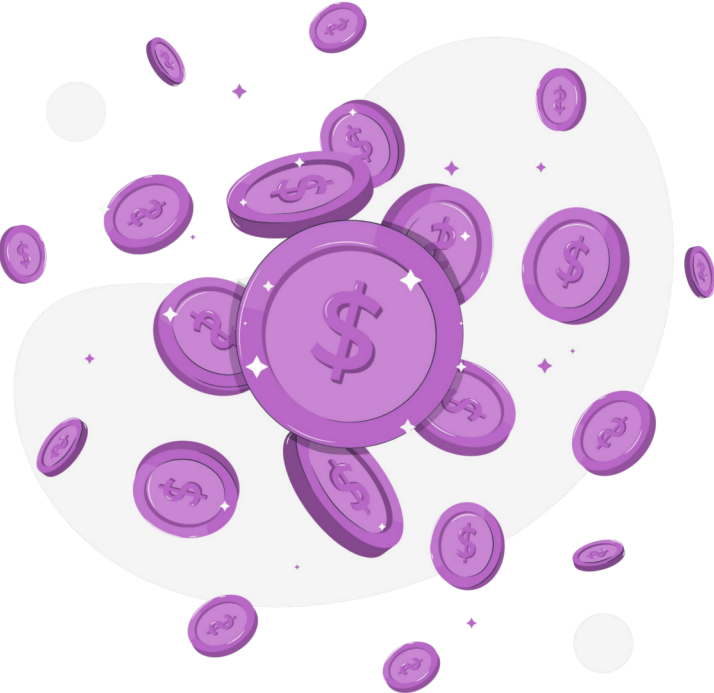


*Santa Rosa High School*



# DISTRICT WIDE ACCESS CONTROL PHASE 1

<i>Project Name</i>	<i>Contracted Cost</i>	<i>Actual Cost</i>
<b>Maria Carillo HS</b>	\$2,071,289	<i>Pending</i>
<b>Montgomery HS</b>	\$1,763,061	<i>Pending</i>
<b>Santa Rosa HS</b>	\$2,774,048	<i>Pending</i>
<b>Rincon Valley MS</b>	\$1,578,125	<i>Pending</i>



# NEW BUILDINGS COMPLETED

<i>Project Name</i>	<i>Contracted Cost</i>	<i>Actual Cost</i>
<b>MHS 2 Story Building</b>	\$29,693,927	<i>Pending</i>
<b>Central Receiving Warehouse</b>	\$8,226,756	<i>Pending</i>



# MONTGOMERY HS 2 STORY BUILDING



# MONTGOMERY HS 2 STORY BUILDING



# CENTRAL RECEIVING WAREHOUSE



# In Progress 2025-2026

---

# DISTRICT OFFICE & EDUCATION CENTER

Complete:

- Relocation of district office
- Phase 1 Demolition
- Central Receiving Warehouse

Programming & Design

- District Office Building
- M&O Warehouse
- Adult Transition Program



First Floor

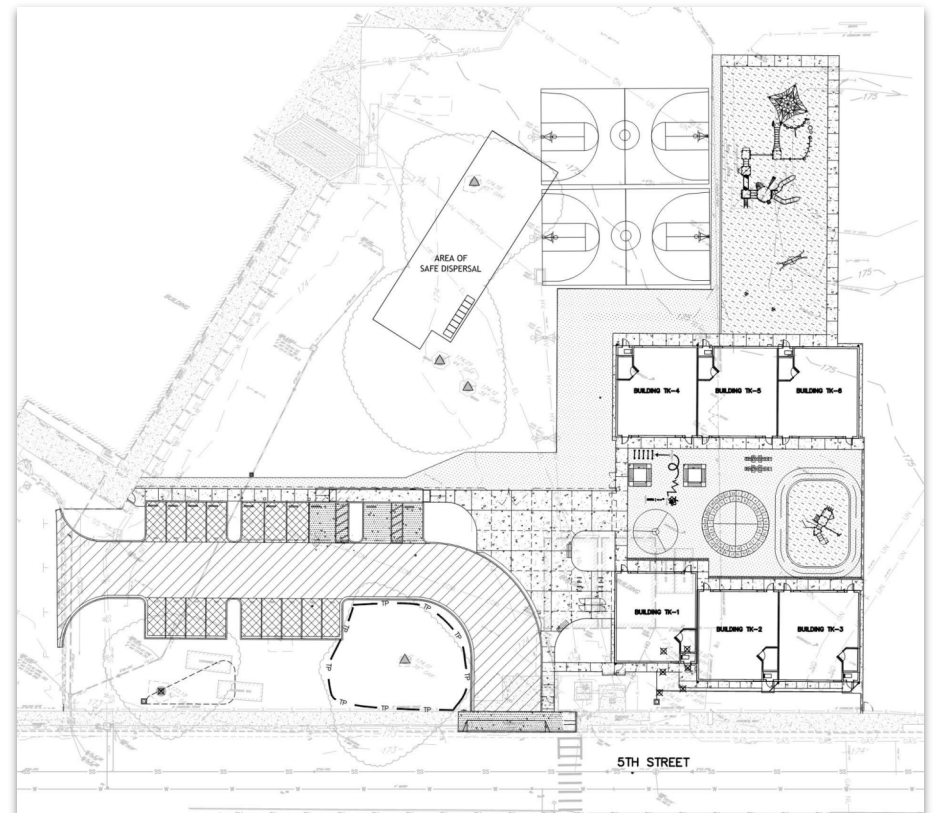


Second Floor



# SANTA ROSA FRENCH AMERICAN TK BUILDING

- Flint Builders contracted under a Progressive Design-Build process
- Project documents were submitted to DSA on Aug. 15th and are currently under review
- Includes 6 classrooms, TK & K Playground and redeveloped pickup / dropoff parking lot
- Anticipated to break ground mid-fall 2025 and be ready for the start of the 2026 school year



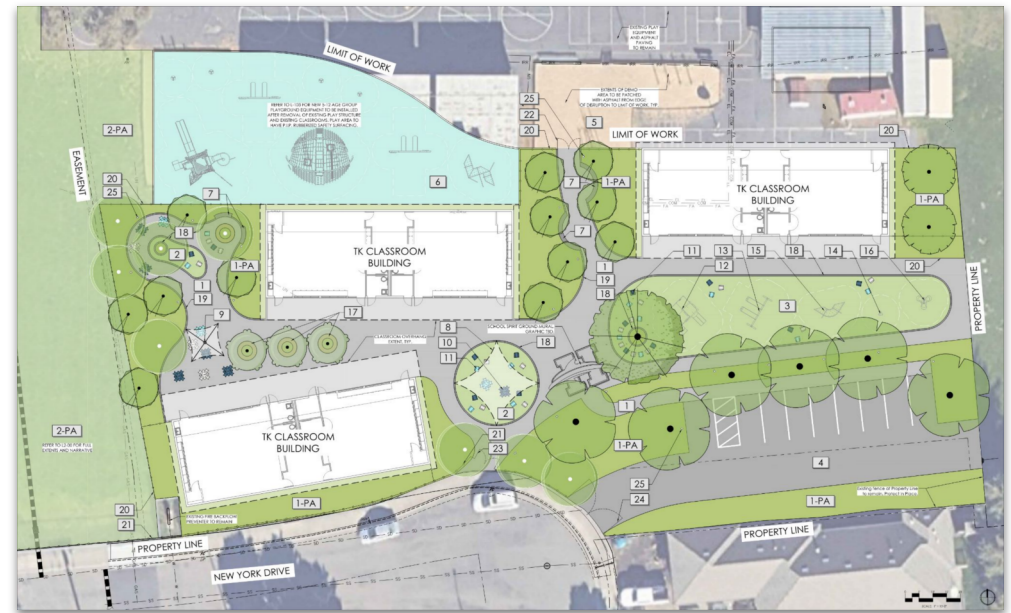
# JAMES MONROE TK BUILDING

- Arntz Builders Inc. and PBK Design contracted under a Progressive Design-Build process
- Currently in design development with anticipated Over the Counter submission to DSA on September 9th.
- Includes 6 classrooms, TK/K Playground, shade structure, and redeveloped parking lot
- Anticipated to break ground mid-fall 2025 and be ready for the 2026 school year



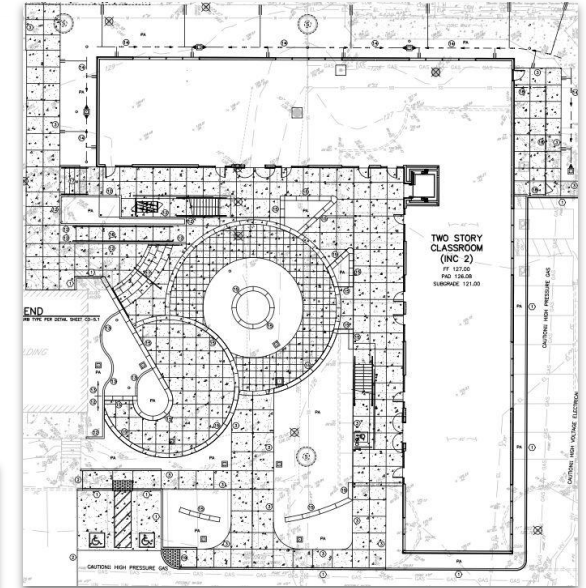
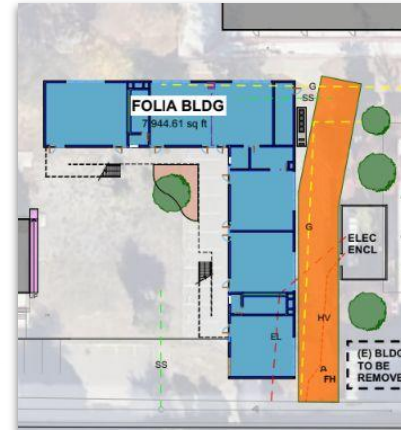
# HELEN LEHMAN TK BUILDING

- Wright Construction & TLCD Architecture contracted under a Progressive Design-Build process
- Currently in design development with anticipated submission to DSA on August 29th
- Includes 6 classrooms, 3 teacher flex rooms, 2 new playgrounds and a new parking lot
- Anticipated to break ground Winter 2025 and be ready for the 2026 school year



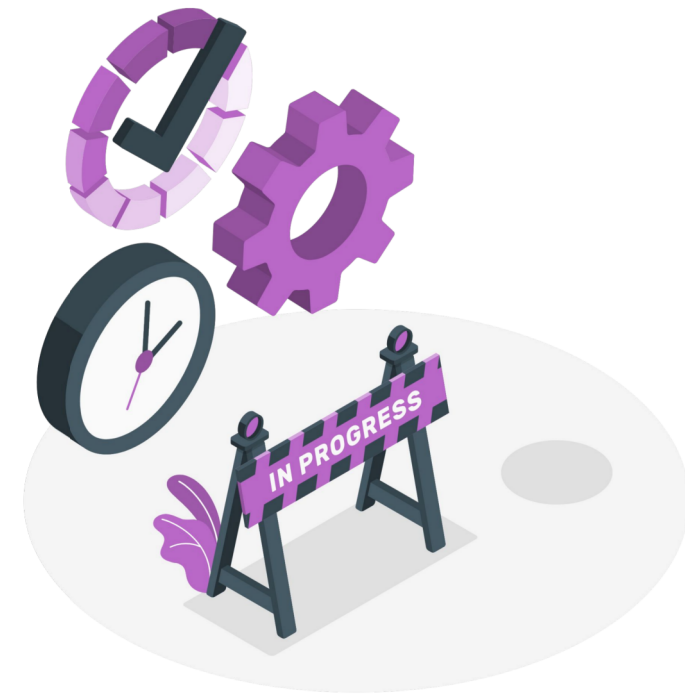
# PINER HIGH SCHOOL 2 STORY BUILDING

- Blach Construction and QKA contracted under a Progressive Design-Build process
- Project design is split into three increments to allow appropriate phasing and quicker approval. Inc. 1 response to DSA comments submitted 8/20, with Inc. 2 and 3 submittals forthcoming shortly
- Project includes 12 classrooms with one science room/prep room, 2 gender neutral group restrooms, a staff break room with restroom and an adjacent courtyard
- Anticipated to break ground in late 2025 and be ready to start the 2026 school year



## And more....

- Elsie Allen Roofing Upgrades
- DeSoto Hall Modernization
- PHS Theater Lighting Upgrades
- SRHS Fencing & Drive Aisle
- District-Wide Fencing Projects (single point entry)
- District-Wide Electronic Access
- District-Wide Classroom Modernization



**Thank you from the Facilities Department.**

**Whatever good things we build end up building us. - Jim Rohn**

