

2026 - 2027

SRCS Board Study Session

October 8, 2025

Information, Analysis, and Consideration

Elementary

- Space and enrollment
- Development different grade level spans at school sites.
 - One 4-6 intermediate campus at Hilliard Comstock
 - Two TK-3 primary campuses at Helen Lehman and James Monroe
 - Consolidate Lincoln
 - Consolidate Steele Lane

Secondary

- Concrete timeline for RVMS-MCHS reconfiguration
- 5 Comprehensive 7-12 sites
- Development of an alternative secondary school
- Concept for SRACS charter renewal under the high school district

Elementary

Hilliard Comstock Upper Elementary School

Closure of Schools

- Steele Lane Elementary (Board approved in February 2025)
- Abraham Lincoln Elementary (New board action needed)

Two TK-3 School Sites

- Helen Lehman Primary School
- James Monroe Primary School

One 4 - 6 School

- Upper Elementary School at the current Hilliard Comstock Campus

Potential Elementary Redesign: TK-3 & 4-6

Pros

- Focus on early literacy and intermediate skills
- Reduction in number of combination classes
- Each TK - 3 school will have 4 teachers per grade level
- The 4 - 6 site will have 9 teachers per grade level
- Greater opportunity for collaboration and calibration
- Pooled resources
- Promotes more inclusive opportunities for special education students

Cons

- New transition at 4th grade between primary and upper elementary school
- Closure of an additional school site
- Staff moves

Hilliard Comstock UES (4-6)

Hidden Valley ES

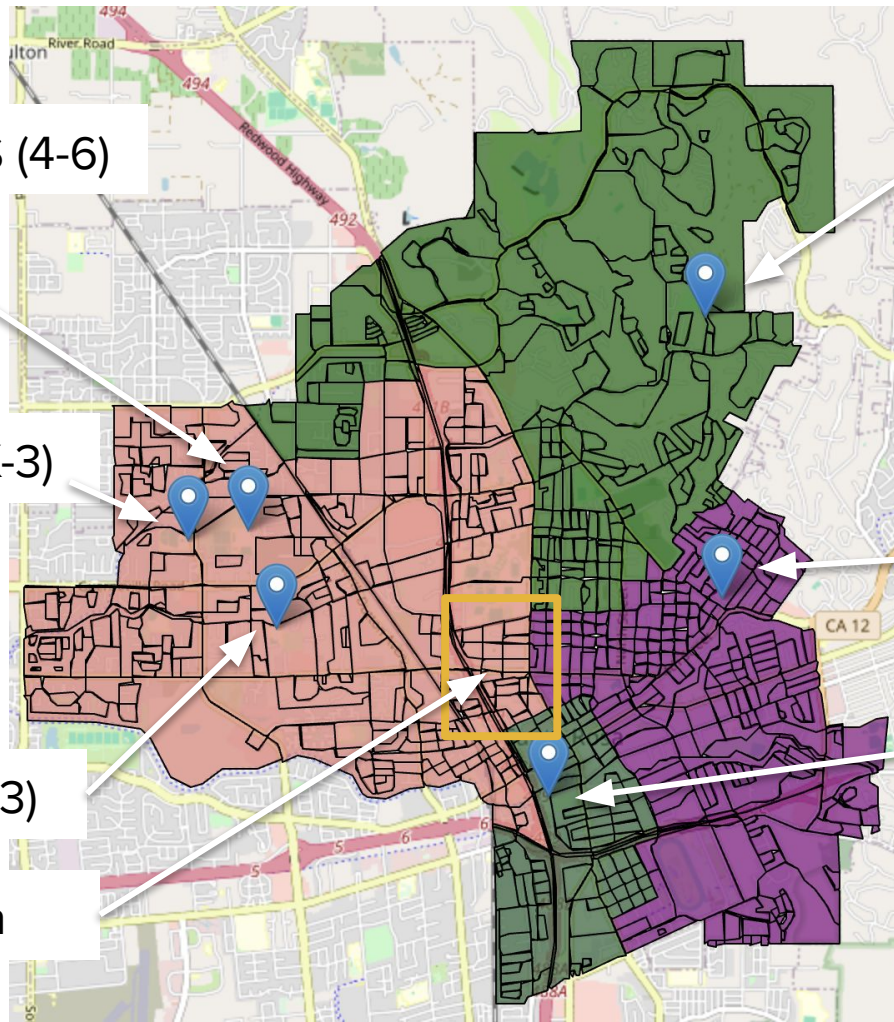
James Monroe PS (TK-3)

Proctor Terrace ES

Helen Lehman PS (TK-3)

Burbank ES

Area with change in boundaries



Hilliard Comstock UES (4-6)

Hidden Valley ES

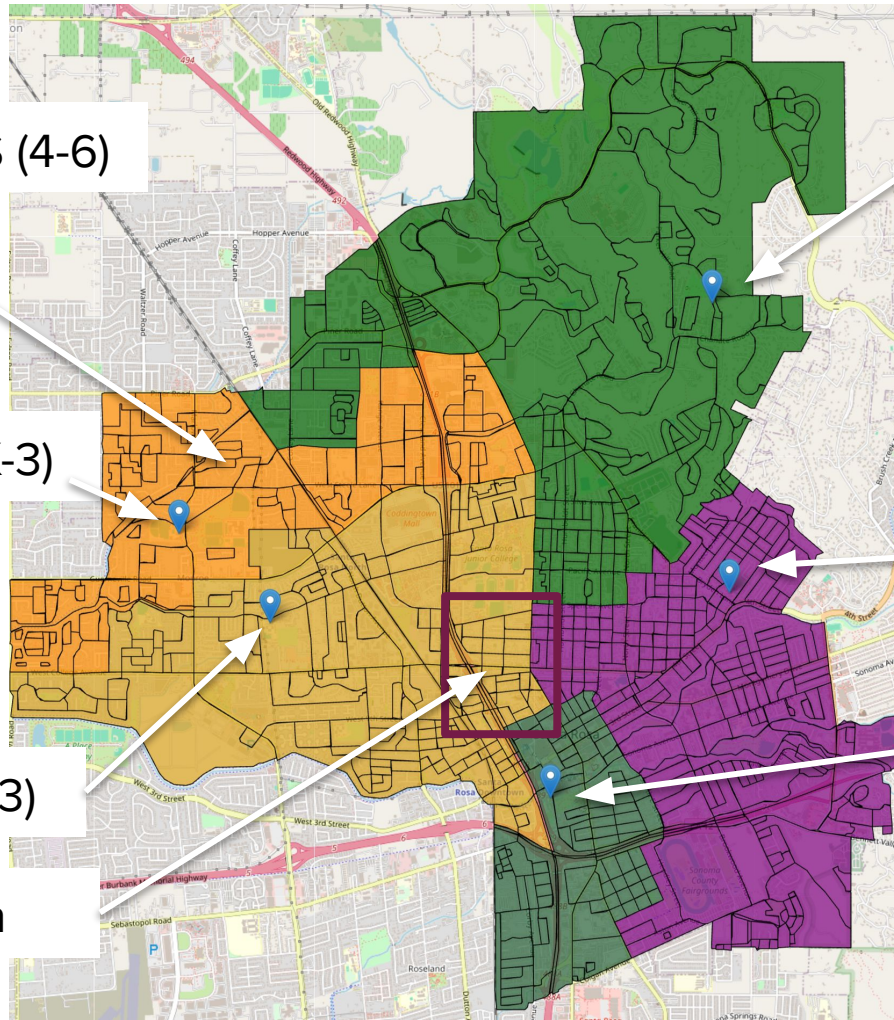
James Monroe PS (TK-3)

Proctor Terrace ES

Helen Lehman PS (TK-3)

Burbank ES

Area with change in boundaries



Secondary

Implementation Timeline for the RVMS/MCHS Reconfiguration

Recommend to implement the RVMS/MCHS reconfiguration in 2027-2028

Consideration

- 5 high schools will serve grades 7-12
- Impact on facilities
- Impact on boundary lines
- Enrollment impact on other sites

Next Steps

- Address space concerns at MCHS & SRHS
- Adjusted boundary lines required
- Adjust priorities and limits on transfers beginning with the 2025 transfer window

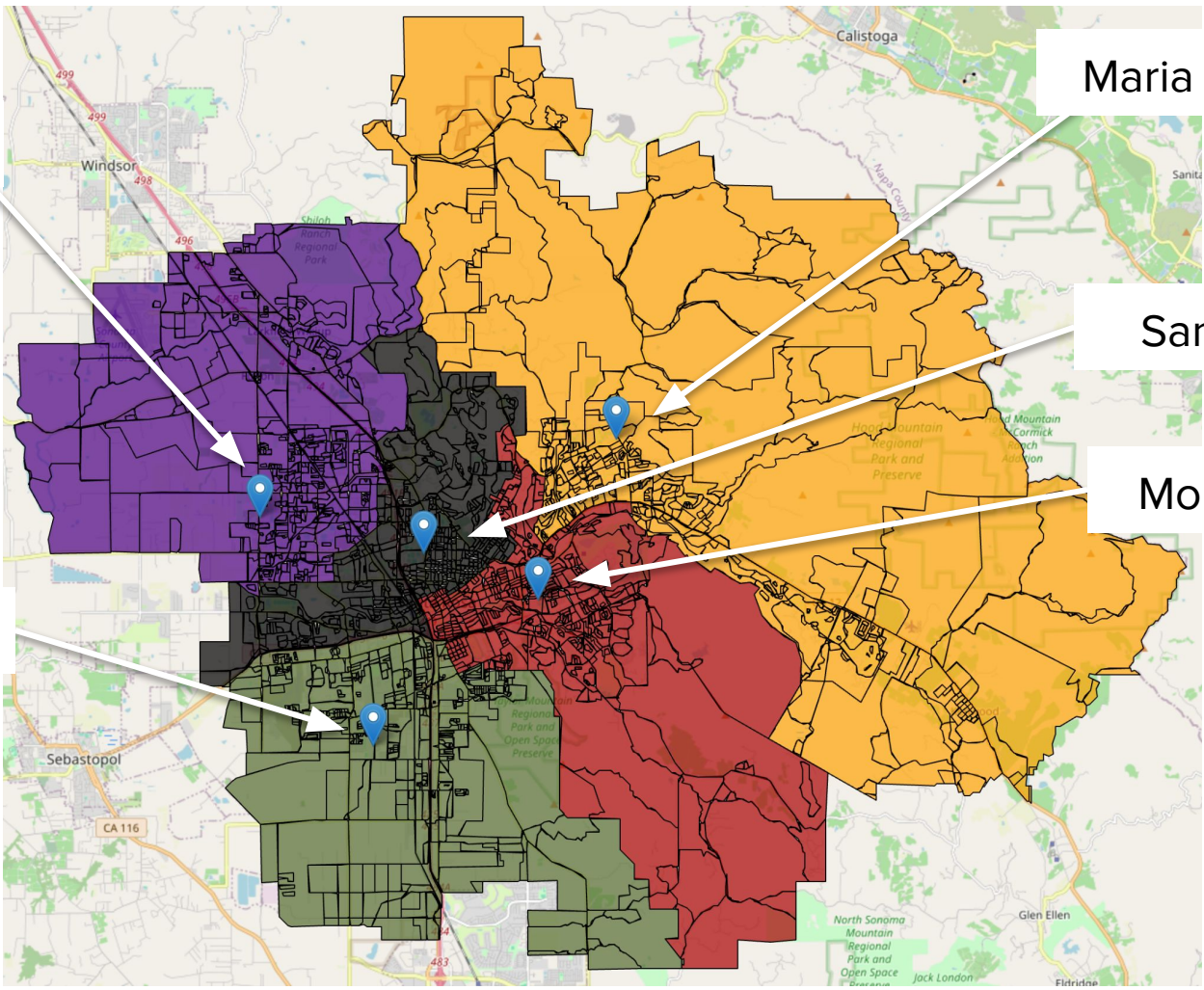
Piner HS

Maria Carrillo HS

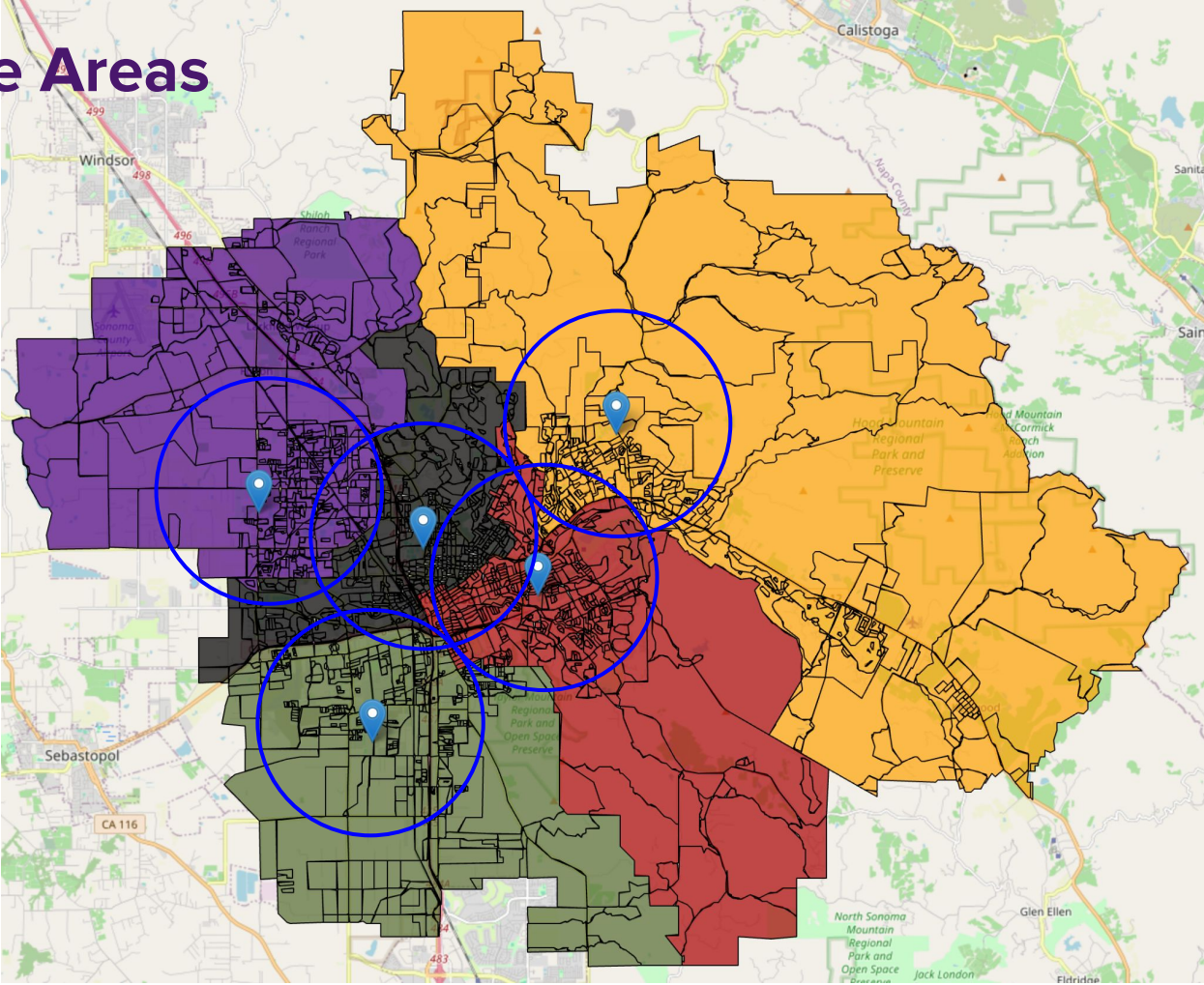
Santa Rosa HS

Montgomery HS

Elsie Allen HS



Bussable Areas



Enrollment Projections - Resident Students

Secondary Residents							
	7	8	9	10	11	12	Total
Elsie Allen High School	128	192	386	416	416	433	1971
Maria Carrillo High School	240	245	323	274	255	255	1592
Montgomery High School	248	219	288	313	305	322	1695
Piner High School	182	164	378	404	355	369	1852
Santa Rosa High School	257	219	325	361	353	381	1896

Secondary Students							
	7	8	9	10	11	12	Total
Elsie Allen High School	78	137	278	322	279	309	1403
Maria Carrillo High School	350	327	375	367	356	379	2154
Montgomery High School	237	221	281	269	281	285	1574
Piner High School	152	124	383	358	324	303	1644
Santa Rosa High School	238	230	383	452	444	485	2232



SRACS Charter Renewal Ideas

SR Accelerated Charter Renewal

Option 1: Close Charter

Option 2: Move to Elementary District campus

- 1A: Offer 5-6 grades @ 64 students per grade
 - 128 total students
- 1B: Offer 4-6 grades @ 64 students per grade
 - 192 total students
- Shared Site Considerations

Option 3: Stay at RVMS and offer 4-12 grades

- Enroll up to 96 students per grade
 - 3 Classes per grade level
 - Total enrollment 864 students
- Small secondary experience
 - 192 junior high students
 - 384 senior high students
 - About 22 teaching FTEs