



Pivot Charter School North Bay

Presented to the Santa Rosa City Schools Board of Education

We Are PIVOT



Pivot Charter School North Bay Renewal/ Continuing Charter

1. Who Are Pivot Students?
2. How Do Pivot Students Perform?
3. Pivot Program
4. History and Additional Information About Pivot Charter Schools and Roads Education Organization

Who Are Pivot Students?



Pivot Charter School North Bay		
2024-2025 School Year		
Prior School District	Number of Students	Percentage of Students
Santa Rosa High	241	43.66%
Roseland	30	5.43%
Santa Rosa Elementary	23	4.17%
Sonoma County Office of Education	20	3.62%
Cotati-Rohnert Park Unified	18	3.26%
California Virtual Academy @ Sonoma	12	2.17%
Rincon Valley Union Elementary	12	2.17%
Piner-Olivet Union Elementary	11	1.99%
West Sonoma County Union High	11	1.99%
Windsor Unified	11	1.99%

Who Are Pivot Students?

2024-25	Enrollment	Socioeconomically Disadvantaged	Students with Disabilities	English Learners	Homeless Youth	Foster Youth
Pivot Charter School	437	65.20%	26.30%	13.00%	1.60%	1.40%
Santa Rosa High	9,546	57.10%	18.40%	15.00%	3.40%	0.40%
Sonoma County	64,798	52.60%	16.10%	18.10%	2.10%	0.40%
California	5,806,221	63.60%	14.20%	17.40%	4.00%	0.50%

School Year	2018-19	2019-20	2020-21	2021-22	2022-23	2023-24	2024-25
Socioeconomically Disadvantaged	53.50%	48.50%	48.60%	48.60%	57.40%	60.00%	65.22%
Students with Disabilities	23.20%	16.20%	21.30%	21.30%	26.40%	27.90%	26.32%
English Learners	7.00%	6.00%	9.00%	9.00%	9.60%	9.50%	13.04%
Foster	1.40%	0.90%	1.40%	1.40%	2.30%	0.90%	1.37%
Homeless	3.60%	4.40%	3.80%	3.80%	3.80%	3.10%	1.60%

Students from Santa Rosa City Schools

552 Total Students
Enrolled at Pivot North Bay During 2024-25

474 Total Students (74.6%)
Live within the Santa Rosa City School Boundary

334 Total Students (60.5%)
Ever Attended a Santa Rosa City School

60.5%
had prior
discipline
records

85%
were chronically
absent at
previous
SRCS School

70.3%
were not
meeting
SBAC ELA
Standards

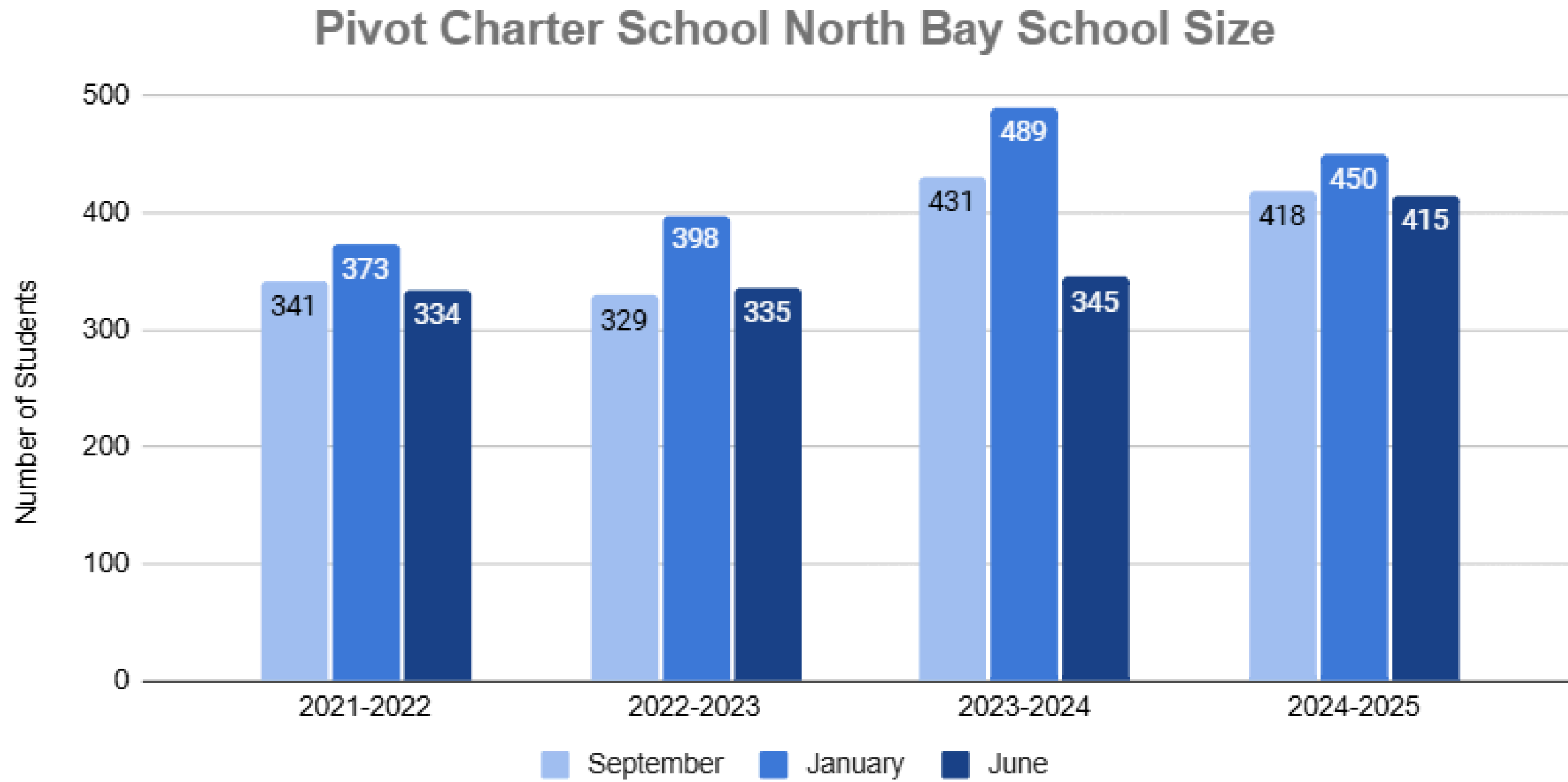
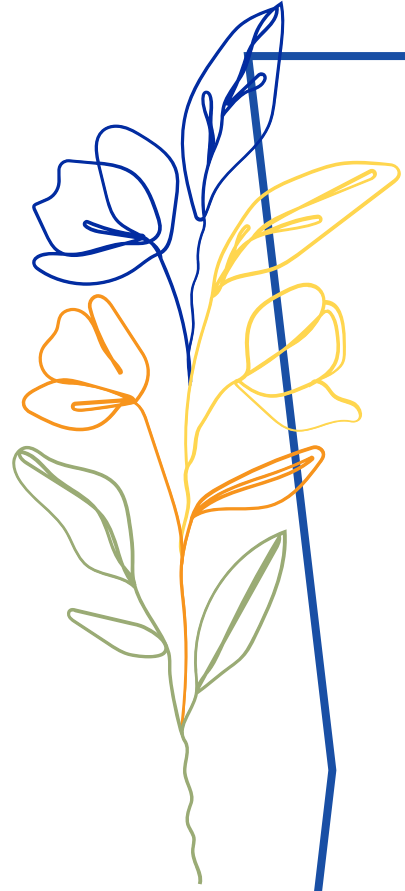
87.9%
were not
meeting
SBAC Math
Standards

56.1%
of HS Students
earned less
than 25 credits
on average

50.6%
were
either EL
or RFEP

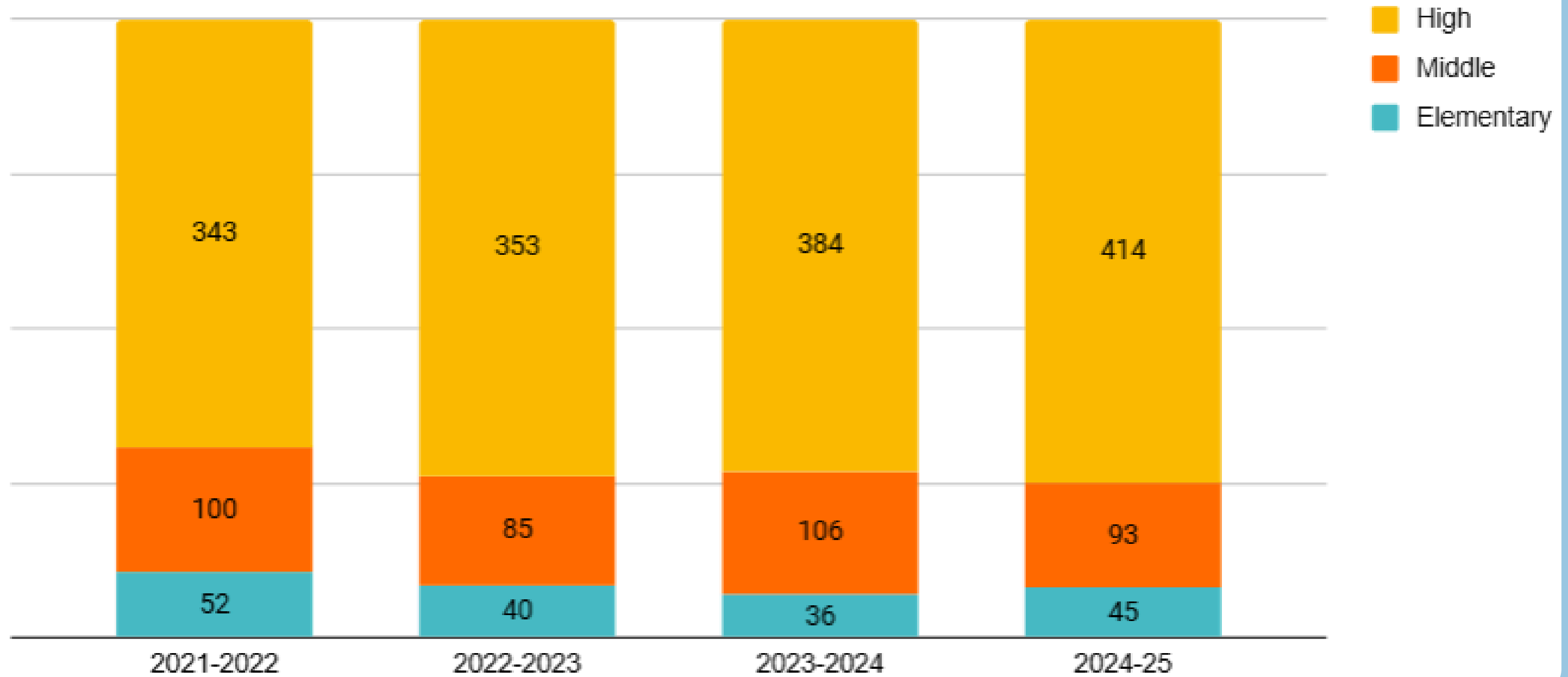
43.1%
were
students
with
disabilities

Pivot Charter School Enrollment



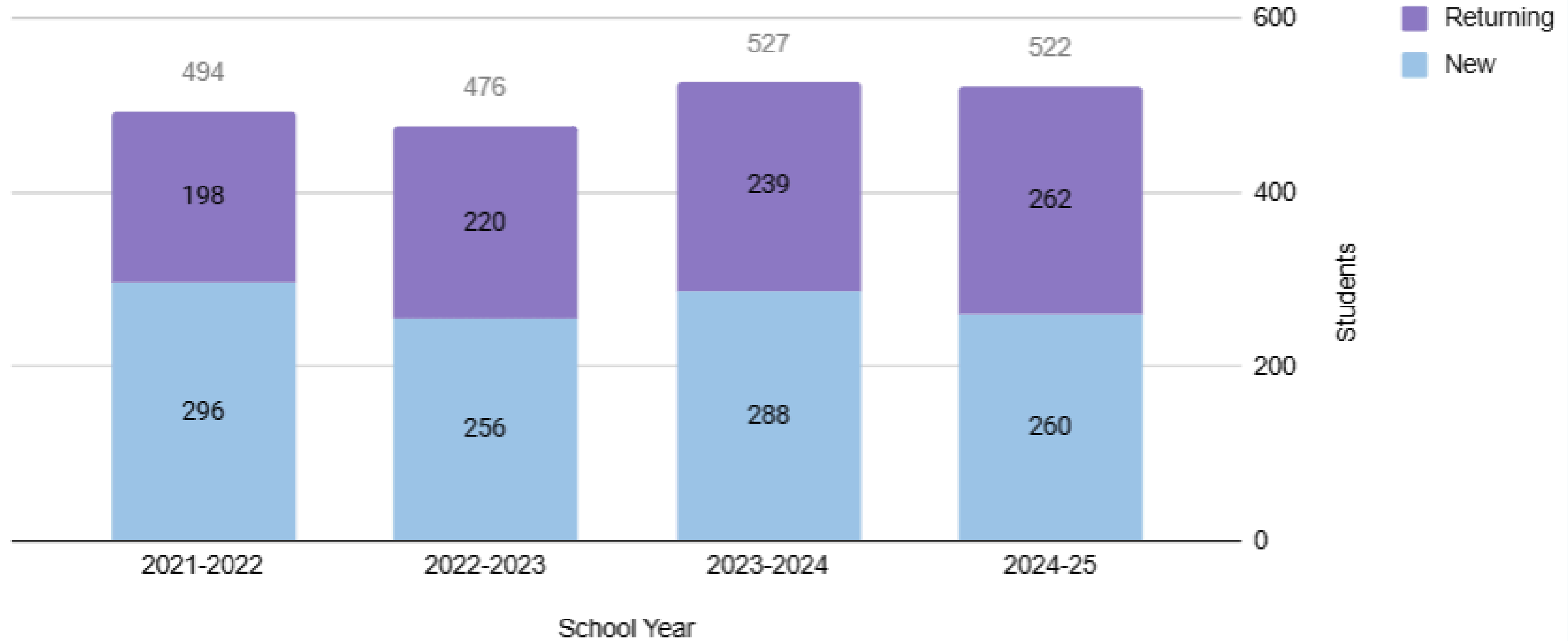
Pivot Enrollment

Pivot Charter School North Bay Grade Span Enrollment



Pivot Enrollment

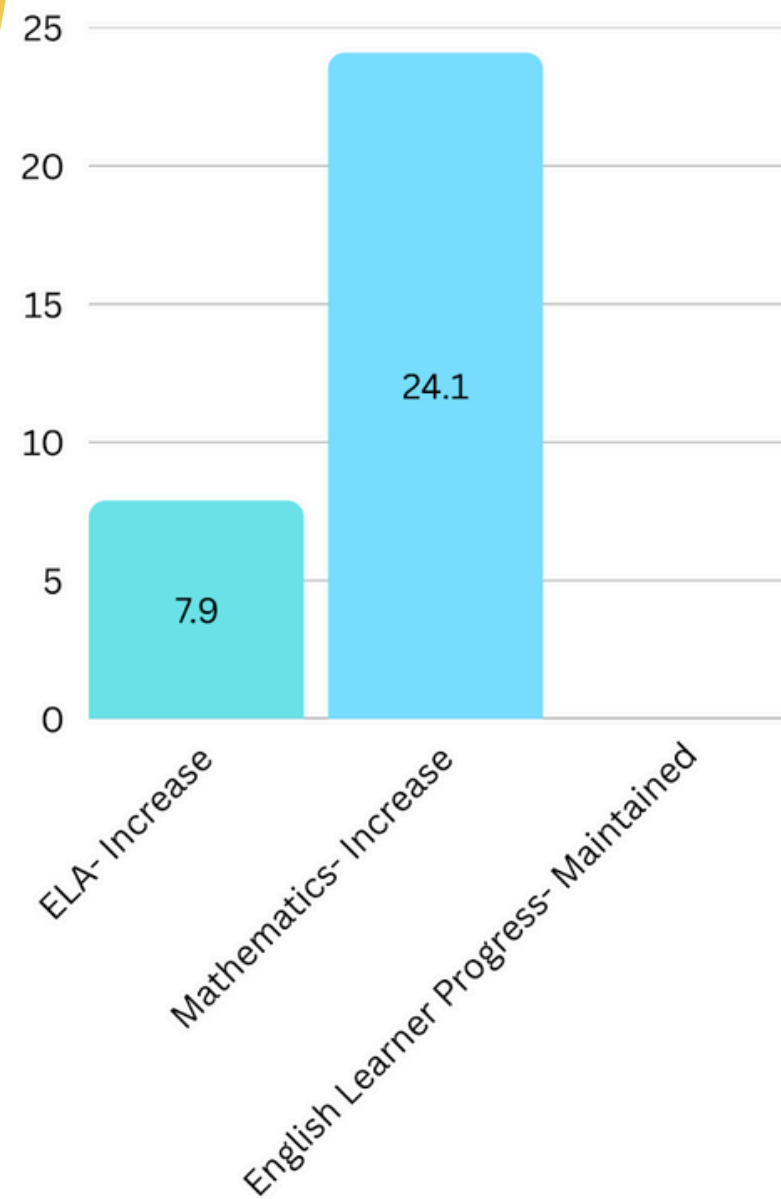
Pivot Charter School North Bay Returning vs New Students



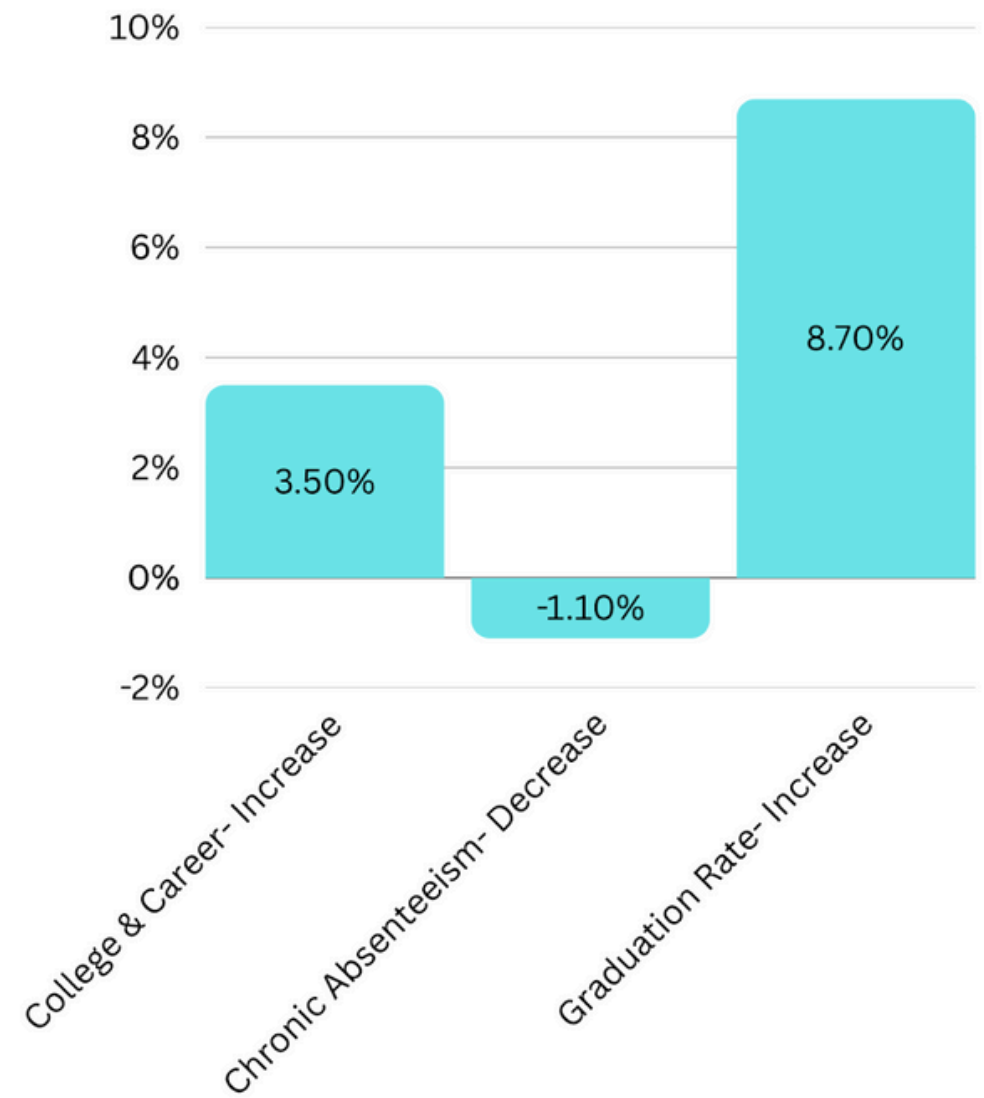
How are Pivot Students Performing?



Overall Academic Progress
2024-2025



Overall Academic Engagement
2024-2025

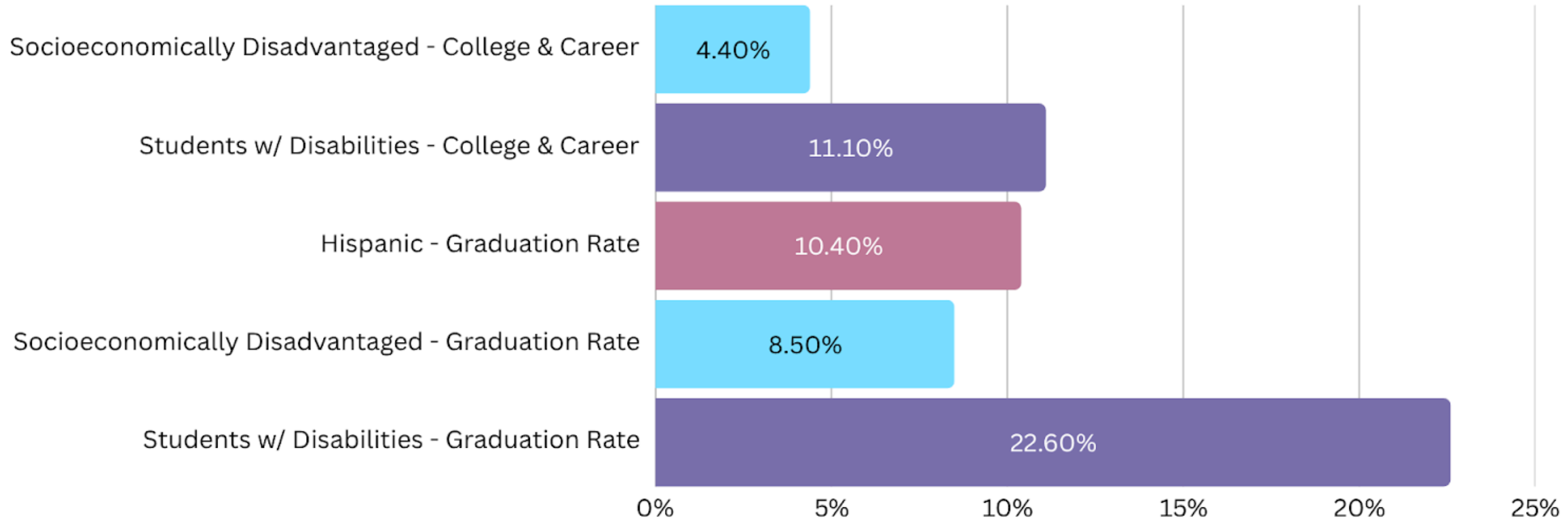


CA Dashboard 2024



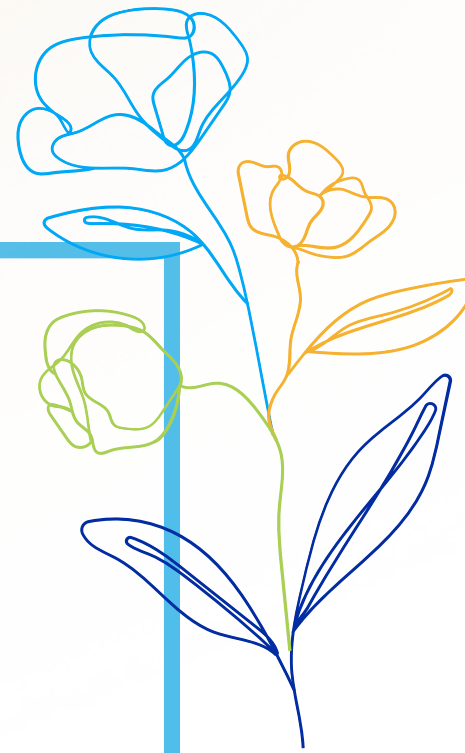
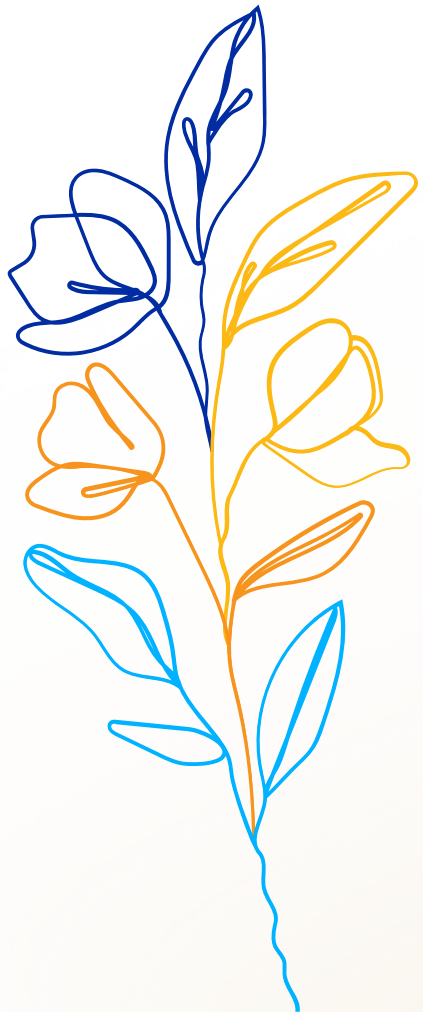
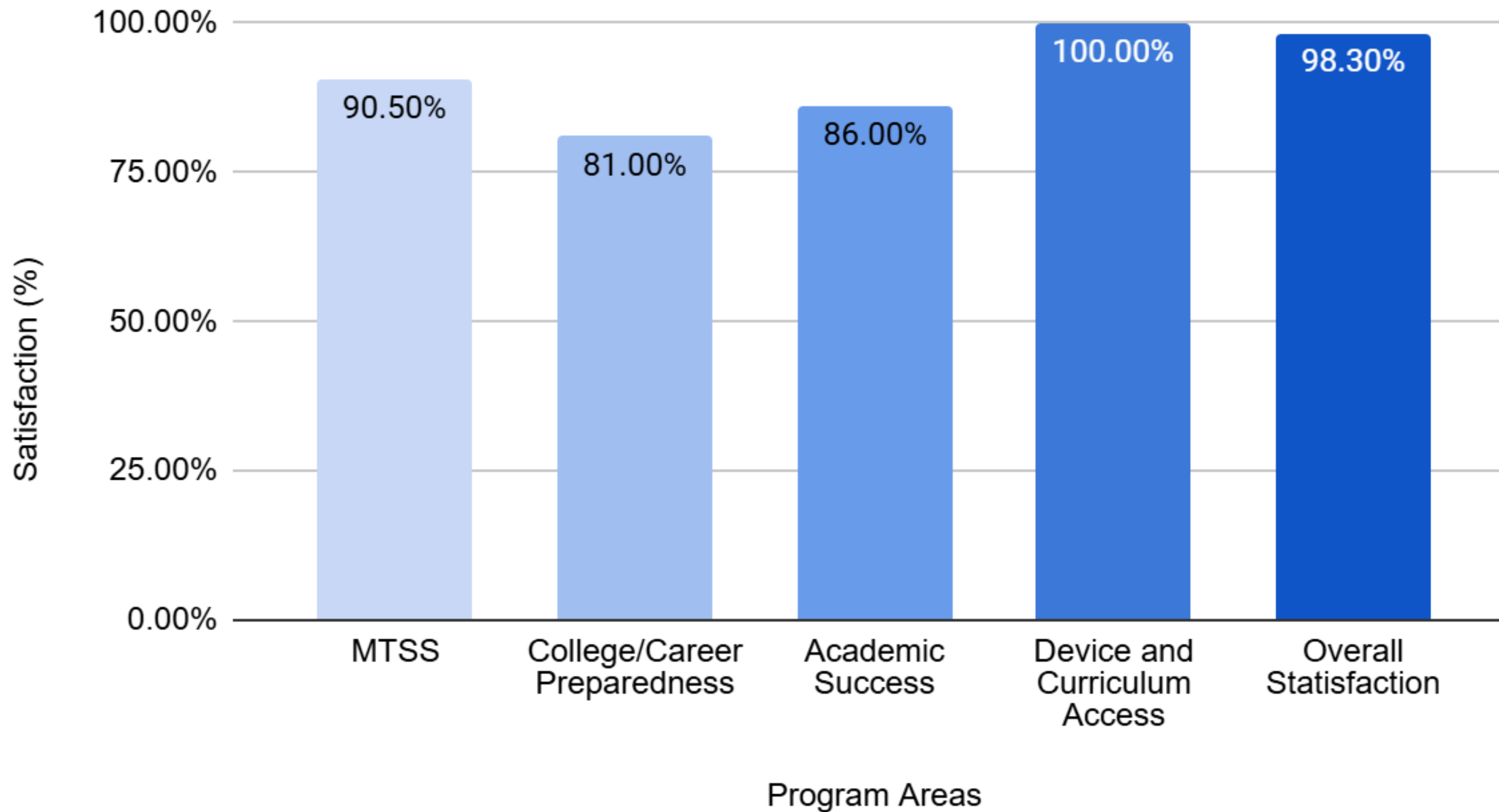
Subgroup Percent Improvement Dashboard 2024

Prior Year Improvement in Academic Performance by Student Subgroup

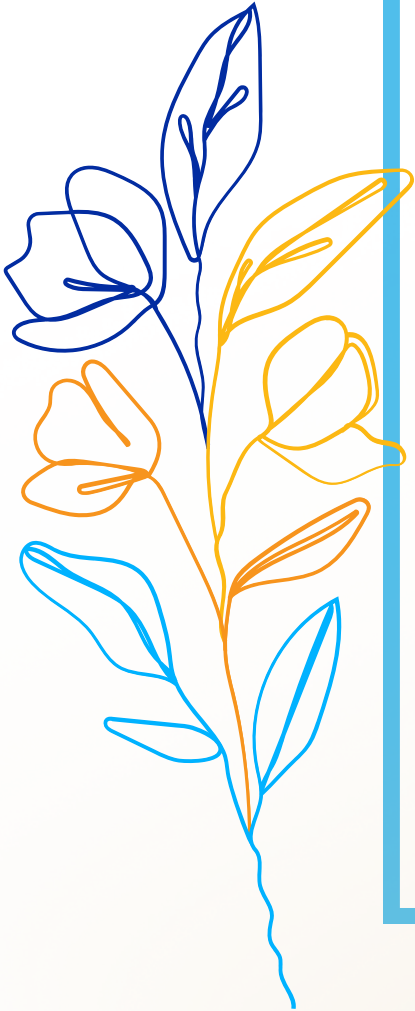
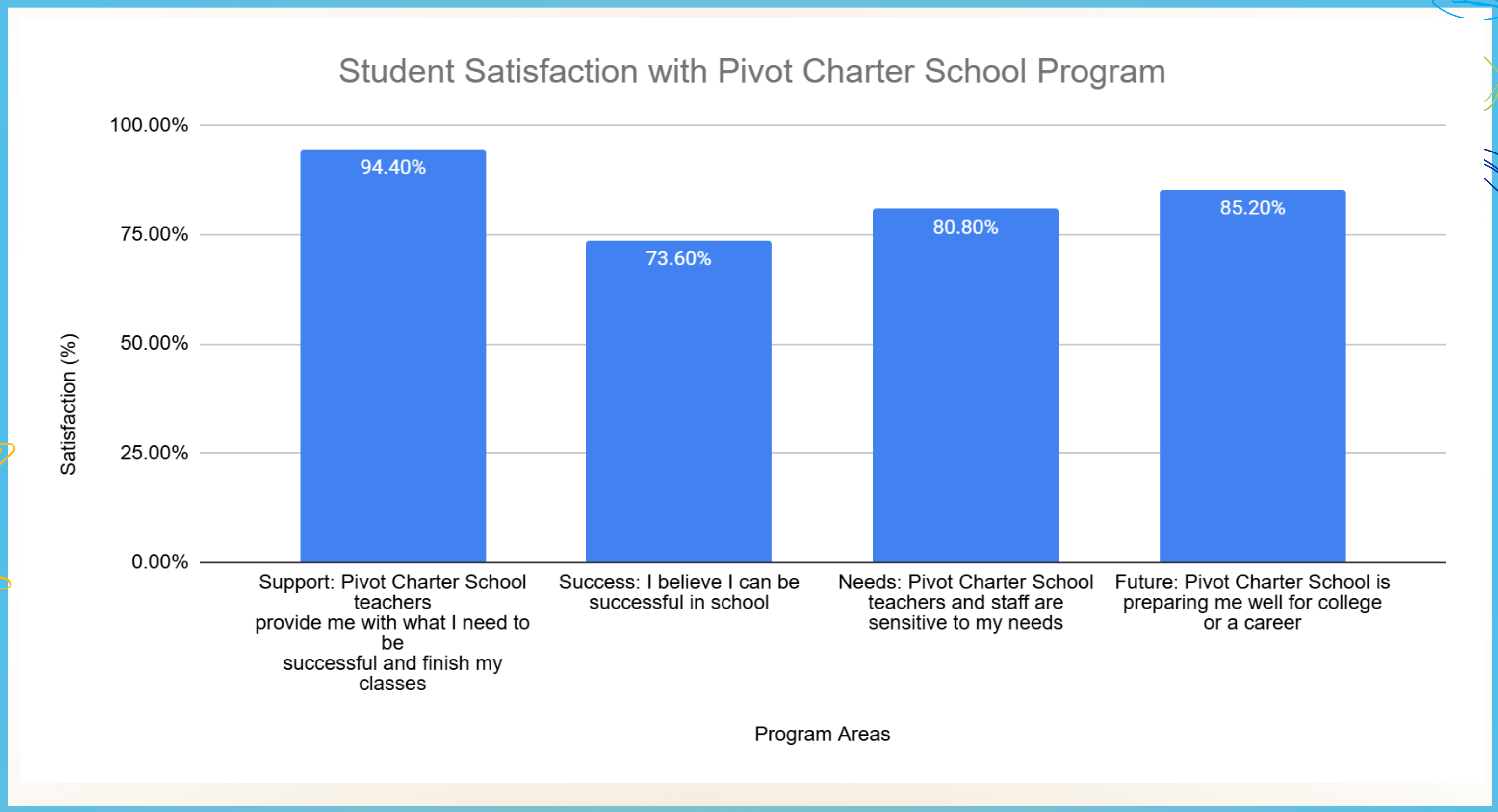


Parent Satisfaction Surveys

Parent Satisfaction with Pivot Charter School Programs



Student Satisfaction Surveys



The Pivot Program

Curriculum & Learning Options

- Diverse online curriculum for all grade levels
- Independent study and flexible schooling model
- On-site classes and program time 4 days/week with credentialed teachers
- Frequent field trips and family events

Teacher & Student Support

- Credentialed teachers (Educational Coordinators) manage 28-32 students, providing daily progress checks and support
- Weekly homeroom sessions with teachers
- Online workshops (2 hours/week) by credentialed teachers for grades 6-12
- Daily tutoring by Pivot staff and external online tutoring services

Specialized Programs

- Robust special education with small online and in-person classes (2-3 students)
- Dedicated English Learner (EL) classes online and on-site
- Grad Track Program for 5th-year seniors and students 60+ credits deficient
- Two full-time counselors for social-emotional learning, executive functioning, and EHRMS special education.

Parent & Student Resources

- Parent portal for tracking student progress and data
- Multi-Tiered System of Support with accommodations, bridging plans, and remediation courses

Pivot Charter School North Bay has had a waitlist of over 150 students for the last 3 years

Schedule for the Supplemental On-site Program

MIDDLE & HIGH SCHOOL DAILY SCHEDULE

ON-SITE MONDAY - THURSDAY Morning Cohort

- 8:30 Breakfast
- 9:00 Community Circle
- 9:15 Class, Club, or Study Skills
- 10:15 Break
- 10:30 Class, Club, or Study Skills
- 12:00 Dismissal and Lunch

Afternoon Cohort

- 12:30 Class, Club, or Study Skills
- 1:00 Virtual Workshops (ALL STUDENTS)
- 2:30 Dismissal and Lunch

VIRTUAL FRIDAY

- All students are required to log into their online classes daily and complete 3-5 assignments
- 1:00 Virtual Homeroom

DAILY SCHEDULE FOR ALL STUDENTS

All students are required to log into their online classes daily and complete 3-5 assignments in addition to attending their virtual workshops

BLOCK 1

ON-SITE CLASSES

MONDAY/WEDNESDAY
9:15 Science Support or Study Skills

10:30 Building & Construction, Walking Group, or Study Skills

TUESDAY/THURSDAY
9:15 Spanish, Photography, Writing Support, or Study Skills

10:30 Art History, Math Club, or Study Skills



Pivot Charter School North Bay History



- Founded in 2010, authorized by Oak Grove Union School District
- First rented facility in Wright Elementary School District, then moved to two other locations in Santa Rosa City Schools before settling in current facility in 2013
- Expanded within current building over time, adding suites as they became available and now occupying the entire facility

- In 2018, law changed requiring charter schools to be authorized by the district where facilities are located; submitted to Santa Rosa City Schools (SRCs) but was denied
- There was one remaining legal option which allowed us to remain authorized by Oak Grove Union, with a new charter petition. We were granted a new charter at that time in 2018

Pivot Charter School North Bay History



- We no longer have the option to remain authorized by Oak Grove Union while operating a facility within SRCS boundaries, unless SRCS chooses to allow it. This could occur any time through the renewal process and would be supported by Oak Grove Union.

- If given the opportunity to be authorized by Santa Rosa City Schools, we're excited to form a partnership built on trust, transparency, and a shared dedication to ensuring that every student in the Santa Rosa community thrives




Additional Information



All four Pivot Charter Schools (located in Sonoma, Riverside, Butte and, San Diego Counties) are overseen by a nonprofit corporation, Roads Education Organization.

Pivot Charter Schools abide by the Brown Act, Political Reform Act and Government Code Section 1090 (conflict of interest requirements)



Per Education Code Section 47604(d) SRCS is not liable for the debts or obligations of a charter school operated by a nonprofit, even if the charter school closes.

The Governing Board is comprised of experts in fields that provide essential knowledge to the leadership of the schools and ensures fiscal solvency, strong financial accountability, integrity of program and compliance with laws. They are city managers, superintendents, public finance experts, entrepreneurs and higher education development experts.



Thank You!

Questions or Comments ?

**Come visit us !
2999 Cleveland Ave**

