

Paulding County School District

May 24, 2022

Master Facility Plan and Ren/Mod Cycle



Strategic Plan Initiatives for Goal Area

Operational and Organizational Excellence

Develop and implement a facility plan to contend with growth and aging facilities

Master Facility Planning

- Design and Education Specifications
- Inventory and Evaluation of Facilities
- Capacity

Renovation and Modification Cycle

- Annual Capital and Maintenance Cycles

New Construction Projects

Agenda for Today

- Overview of Master Facility Planning
- Define Renovation and Modification
- Completed, Current, and Future Ren Mod Projects
- Ongoing Maintenance and Capital Projects
- Questions

Master Facility Planning: Foundation



Design
Specifications

Educational
Specifications

Master Facility Planning: Facility Age

1950-1959

Dallas, New Georgia, Union, HJMS

1960-1969

Hiram ES, PCHS

1980-1989

McGarity

1990-1999

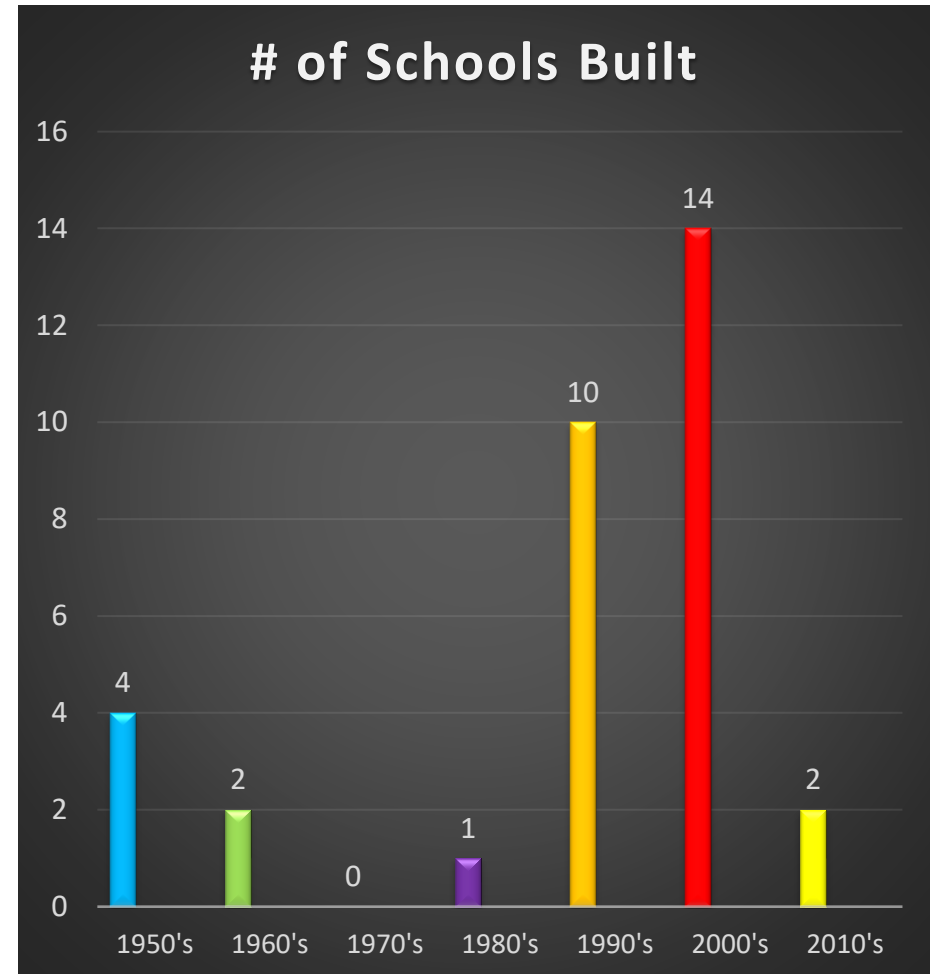
Allgood, Nebo, Northside, Panter, Roberts, Shelton, Dobbins, EPMS, SPMS, EPHS

2000-2009

Baggett, Burnt Hickory, Dugan, Hutchens, Poole, Ragsdale, Russom, Austin, Moses, McClure, Scoggins, Hiram HS, NPHS, SPHS

2010's

Abney, Ritch MS



Master Facility Planning: Operational Capacity

	Any mitigations are relatively easy for a school to implement. Mitigations might cause inconvenience but no direct impact on instructional or operational effectiveness	<p style="text-align: center;"><u>Examples</u></p> <ul style="list-style-type: none"> • Shared office spaces • Utilizing IUs for office space • Limited storage space
	Mitigations can be done at the school level. Mitigations may cause inconvenience to staff or students but should have minimal impact on instructional or operational effectiveness	<p style="text-align: center;"><u>Examples</u></p> <ul style="list-style-type: none"> • HRs not in proximity • ESEP/EIP staff sharing space (scheduling) • Special on cart • Sharing HS classrooms
	Mitigations are needed by the school and potentially by the district level. Mitigations may have some impact on instructional and/or operational effectiveness	<p style="text-align: center;"><u>Examples</u></p> <ul style="list-style-type: none"> • Mobile Units for staff or office space • Utilizing non-instructional spaces • No available shared meeting space
	Mitigations are required by the school and at the district level. Without mitigations by the school and district, there may be significant impact on instructional and/or operational effectiveness	<p style="text-align: center;"><u>Examples</u></p> <ul style="list-style-type: none"> • Utilizing mobiles for instructional units • All specials on carts • Increased class size

MFP: Informs the Five-Year Facility Plan



RESOLUTION TO REQUEST GaDOE ASSISTANCE IN DEVELOPING A NEW FIVE-YEAR LOCAL FACILITIES PLAN

**Paulding County School Board of Education
May 24, 2022**

Whereas the Paulding County Board of Education's current five-year local facilities plan will expire June 30, 2023; and,

Whereas the Paulding County Board of Education will be developing a new five-year local facility plan as required by O.C.G.A. 20-2-260 during this fiscal year,

Be it therefore resolved that the Paulding County Board of Education is requesting the assistance of the Georgia Department of Education Facilities Section in the development of the new five-year local facilities plan to be completed by March 15, 2023.

Approved by the _____ School Board on
This ____ day of _____, 20__

- Georgia Law 20-2-26
- Current inventory, services, programs
- List of construction projects prioritized
- Regular entitlement
- Current Plan Expiring June 2023
 - Application next year for 2023-2027
 - GaDOE Consultant and Department
 - EdPlanners Assisting

MFP: Determines Ren Mod Cycle

Renovations: act or process of modernizing an existing facility

Modifications: altering or adjusting a facility to meet new needs

- Facilities occupied more than 10 years earn up to \$14,000 per IU as eligible need *
- Funding application may be submitted when the facility has been occupied for 20 or more years
- Facilities Service Consultant must validate the renovation activities
- Architectural cost estimates must be submitted
- Goal Maximize

* Reimbursements are based on costs for specific modifications including Roof, HVAC, Kitchen modifications, canopies, design fees, contingencies

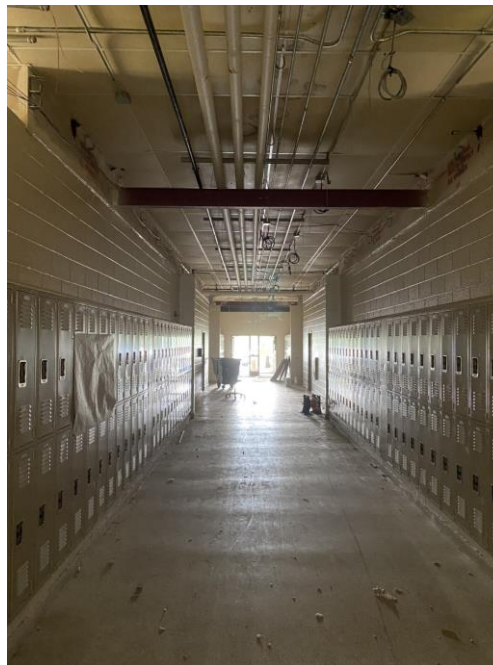
Ren Mods in E-SPLOST V and VI

Completed

✓ East Paulding HS
✓ East Paulding MS
✓ Panter Elementary
✓ Nebo Elementary
✓ Herschel Jones Middle

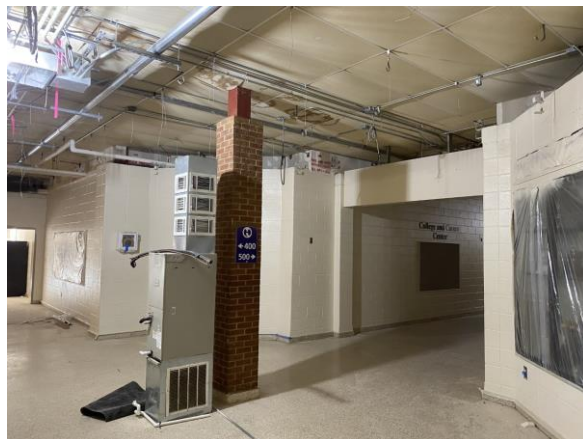
In Progress

Hiram High School
Dobbins Middle
Allgood Elementary



Assessing

Roberts Elementary
Moses Middle
Baggett Elementary
Poole Elementary
Austin Middle School
Hiram Elementary



Other Current E-SPLOST Projects



✓ Fire Alarm and Intercom Upgrades

✓ Safety and Security Enhancements

✓ Theaters and Fine Arts

✓ Athletic Facility Enhancements

✓ Engineering Labs MS and SPHS

MFP: Outlines Recurring Projects

✓ Gym Floor Resurfacing

✓ Asphalt Repairs and Resurfacing

✓ Field, Track, and Tennis Court Repairs

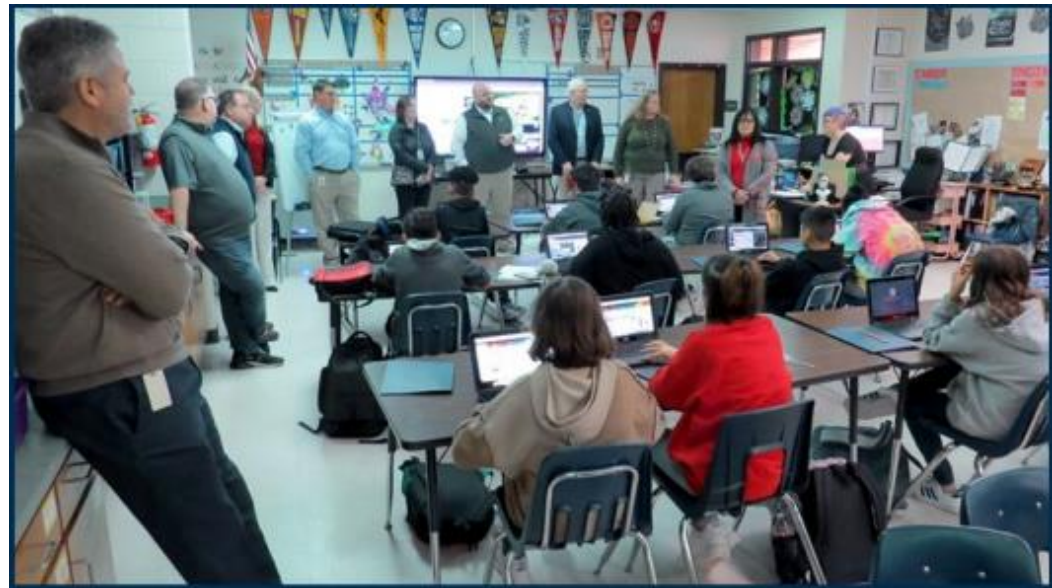
✓ Lighting Upgrades

✓ Playground Surfacing and Equipment



Board Updates and Communication

- Weekly Updates Section
- Agenda Items: Arch and CMAR Contracts
- Quarterly Updates
- Special Events (Groundbreaking, Grand Openings)
- Facility Inspection Tours (2 in FY23)



Paulding County School District

May 24, 2022

Renovations and Modifications

