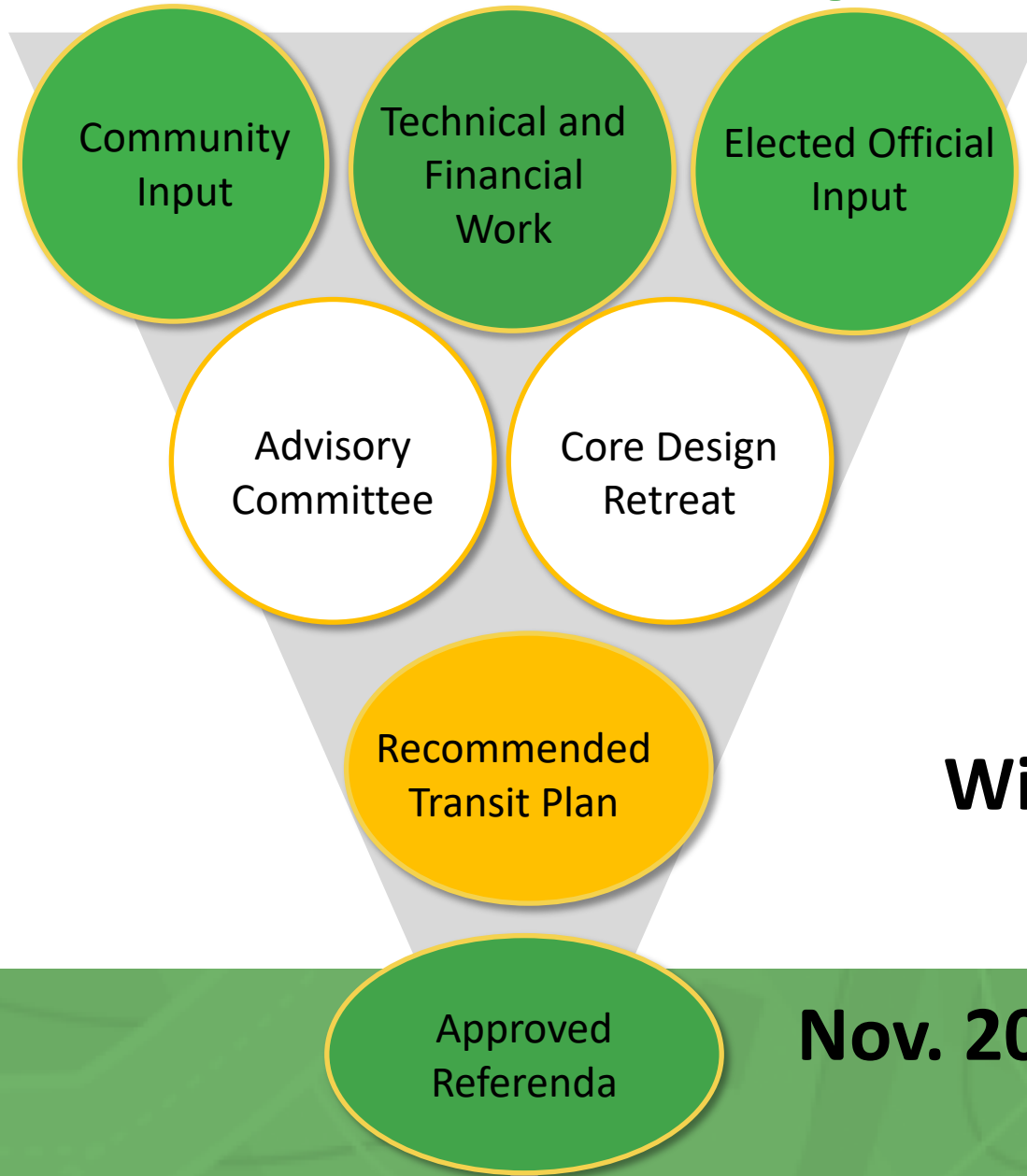


**GO FORWARD**  
A COMMUNITY INVESTMENT IN TRANSIT

# WCPSS & Youth GoPass

August 7, 2018

# Transit Plan Development Process



**Spring /  
Summer 2015**

**Fall 2015**

**Winter 2015**

**Nov. 2016**

**GO FORWARD**  
A COMMUNITY INVESTMENT IN TRANSIT

# Advisory Committee

Community  
Input

- December 2014
- January 2015
- April 2015
- October 2015

Town/City Councils

Residents

NC Justice Center

Chambers of Commerce

ITT Tech

Dorcas Ministries

Transit Riders

Commissioners

Town/City Managers

Mayors

Planning Boards

Raleigh Passenger Rail  
Task Force

Transit Authorities and  
Agencies

Businesses

New Bern Avenue  
Corridor Alliance

Neighborhood Groups

Real Estate Agents

Southeast Raleigh  
Advocates

DHHS NC

Alliance of Disability  
Advocates

NC Legislature

NC State University

RDU

State of North Carolina

**GO FORWARD**  
A COMMUNITY INVESTMENT IN TRANSIT

# Wake Transit Referendum

In November 2016, Wake County voters approved a transit-dedicated half-cent sales tax investment.

1

**CONNECT**  
the region

Building a 37 mile  
commuter rail  
system



2

**CONNECT**  
all Wake  
County  
communities

Expanding Bus  
Service



3

**PROVIDE**  
frequent,  
reliable  
urban  
mobility

Implementing Bus  
Rapid Transit



4

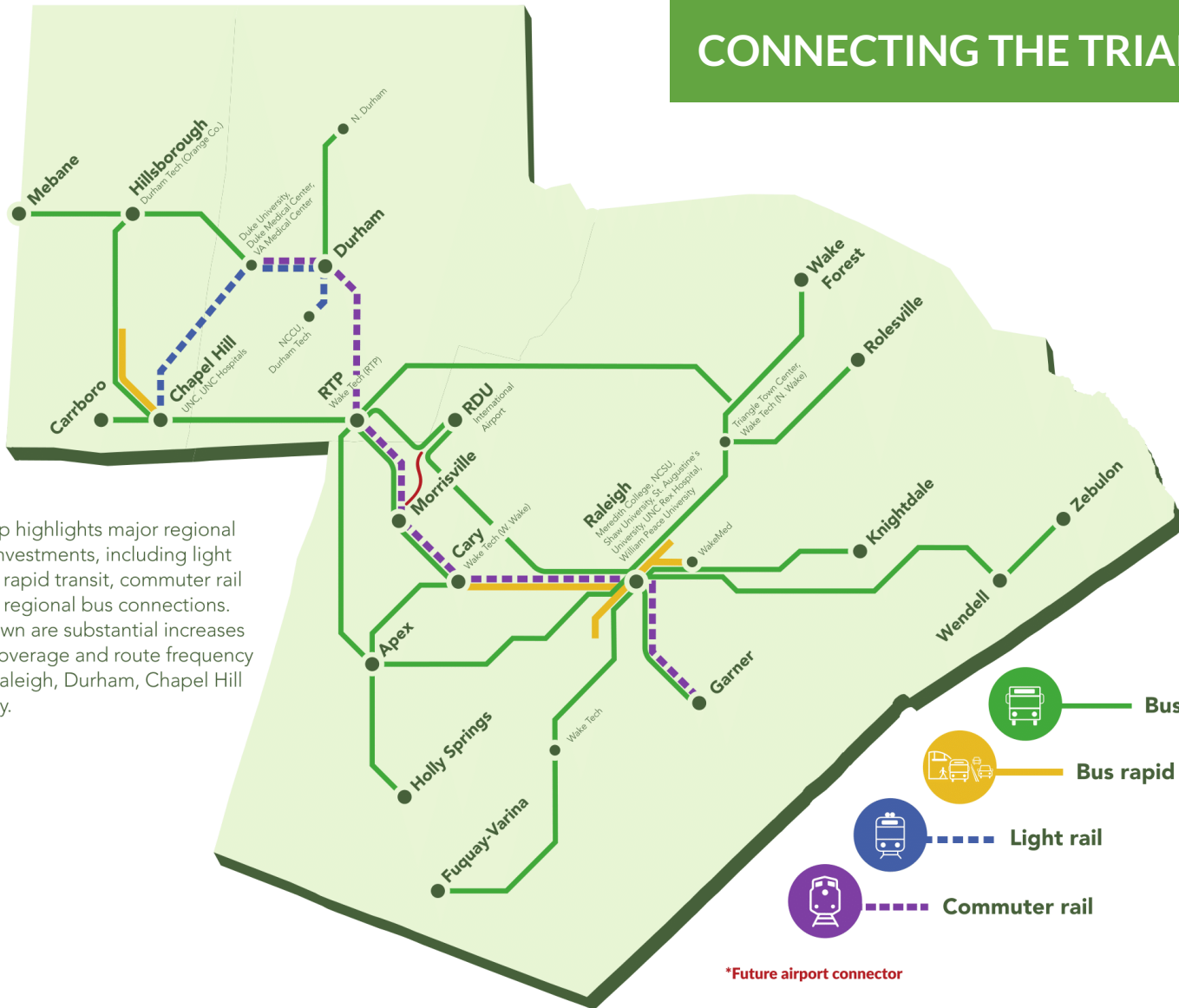
**ENHANCE**  
access to  
transit

Improving Bus  
Stops and Shelters



**GO FORWARD**  
A COMMUNITY INVESTMENT IN TRANSIT

# CONNECTING THE TRIANGLE



**NOTE:**

This map highlights major regional transit investments, including light rail, bus rapid transit, commuter rail and key regional bus connections. Not shown are substantial increases in bus coverage and route frequency within Raleigh, Durham, Chapel Hill and Cary.

# RIDE THE BUS FREE!

Ages 13-18

[youthgopass.com](http://youthgopass.com)



**Youth  
GoPass**  
YouthGoPass.com

**GO FORWARD**  
A COMMUNITY INVESTMENT IN TRANSIT

919.485.RIDE (7433)

**GO** Triangle **GO** Raleigh **GO** Cary **GO** Durham

919-485-RIDE  
Supported by 511



- **Available at:**
  - **Transit Agencies,**
  - **Wake County Libraries and Regional Centers,**
  - **City of Raleigh Community Centers,**
  - **Partnering with Wake County Health and Human Service Programs**

next bus  
arrival times, text:

OLIVE  
532

41411 or call  
19-485-RIDE

supported by



Youth  
**GoPass**  
goforwardnc.org/youthpass



**GO FORWARD**  
A COMMUNITY INVESTMENT IN TRANSIT

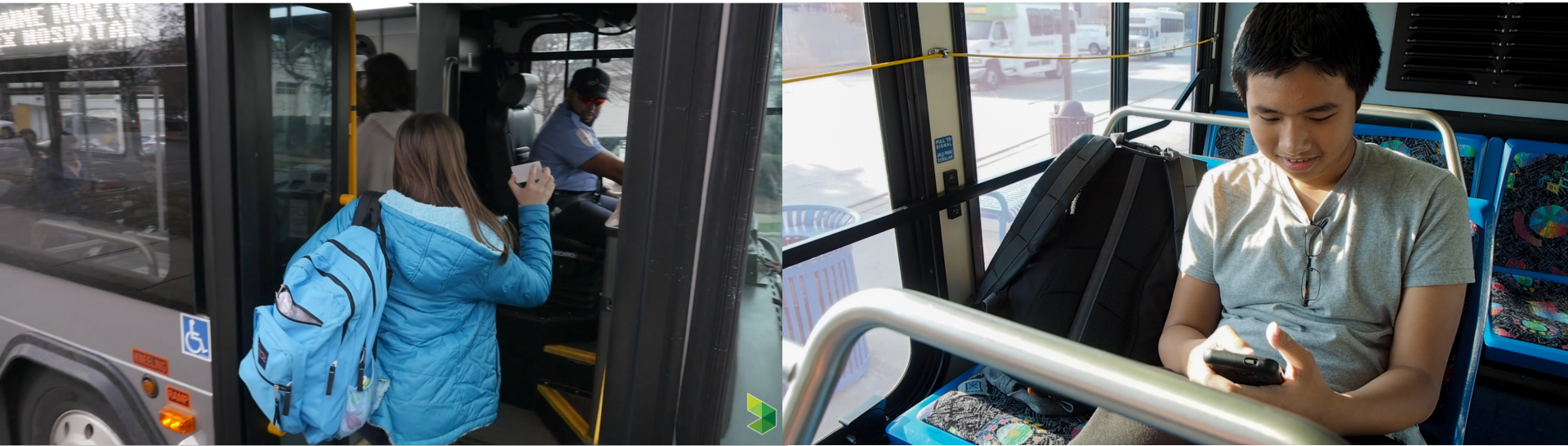
919.485.RIDE (7433)

GO Triangle GO Raleigh GO Cary





**GO FORWARD**  
A COMMUNITY INVESTMENT IN TRANSIT



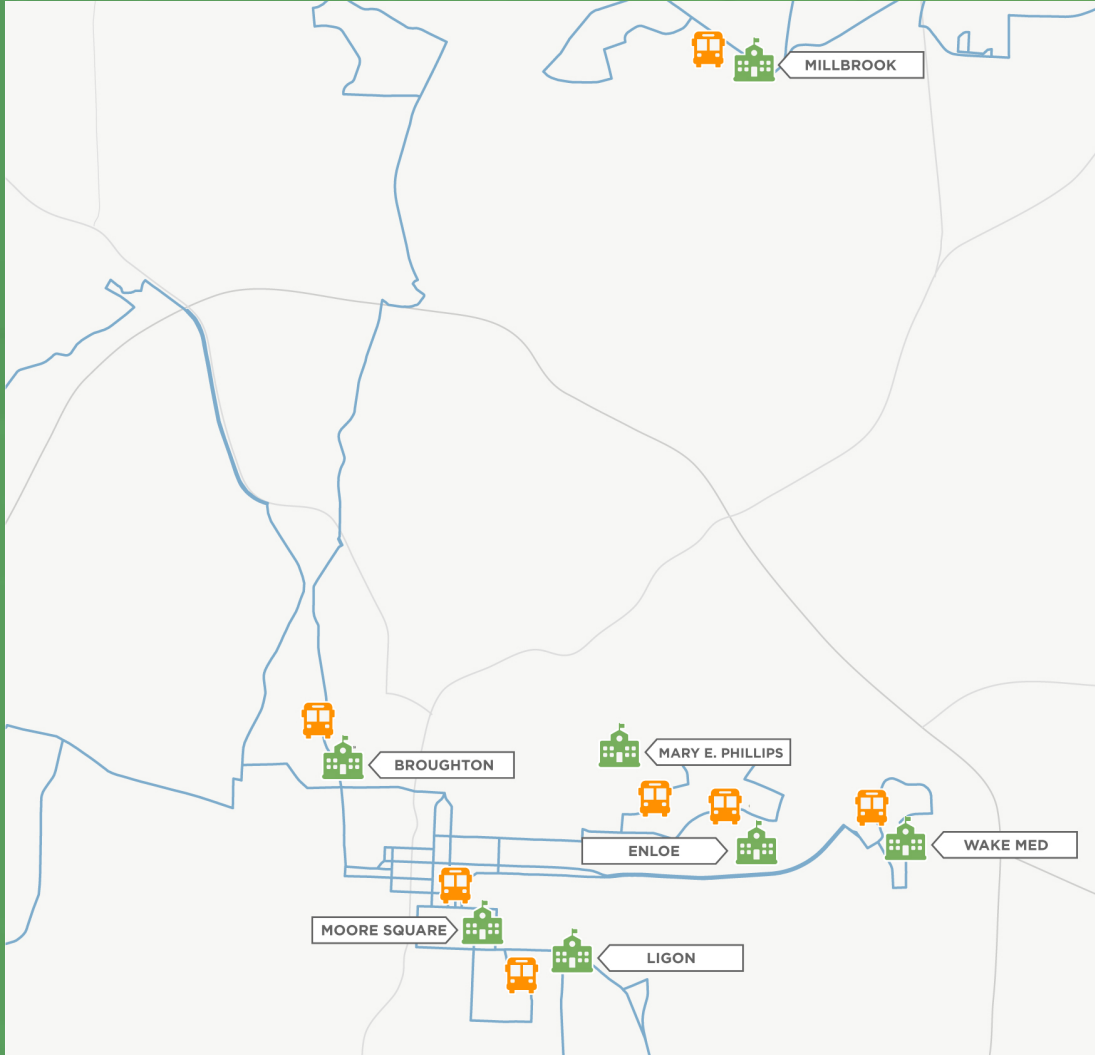
**GO FORWARD**  
A COMMUNITY INVESTMENT IN TRANSIT

# Youth GoPass WCPSS Pilot Program



**GO FORWARD**  
A COMMUNITY INVESTMENT IN TRANSIT

# Pilot Schools and Bus Routes

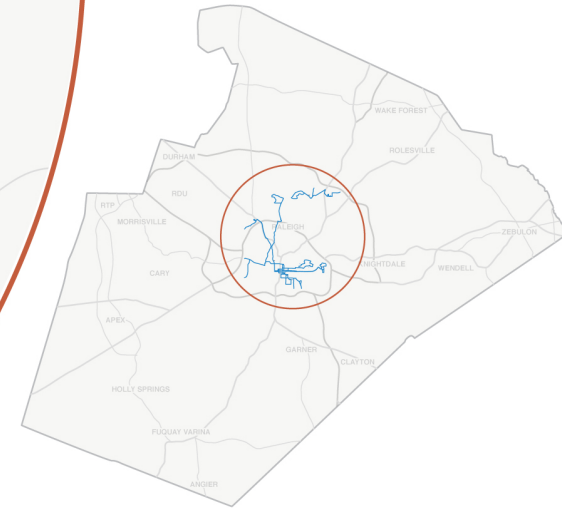


SCHOOL



BUS STOP

SCHOOL	APPROXIMATE TIMES	ROUTES
BROUGHTON	:00 :10 :15 :30 :40 :45	8, 12, 16
ENLOE	:02 :17 :32 :47	15
MARY PHILLIPS	:10 :40	10
WAKE MED	:12 :27 :42 :57	15
MILLBROOK	:05 :45	25L
LIGON	:03 :20 :33 :50	5, 22
MOORE SQUARE	GORALEIGH STATION	GORALEIGH STATION





# Questions?

Learn more at [YouthGoPass.com](https://YouthGoPass.com)

Learn more at [YouthGoPass.com](https://YouthGoPass.com)

**GO FORWARD**  
A COMMUNITY INVESTMENT IN TRANSIT