

# College & Career Signature Programs

---

& Other Secondary Program Offerings  
Across Santa Rosa City Schools

# Program Offerings at SRCS High Schools

## General introductory information

- **College & Career Signature Programs**
- **Career Technical Education (CTE) Pathways**
- **Visual & Performing Arts Programs (VAPA)**
- **Advanced Placement (AP) Courses**
- **Athletics Programs**
- **Student Activities**
- **AVID Program**

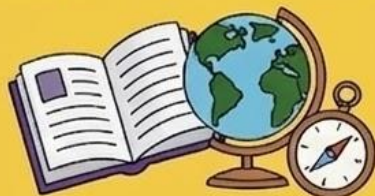


# Maria Carrillo High School– Additional Programs

**AP Courses & AP Capstone  
Diploma Program**



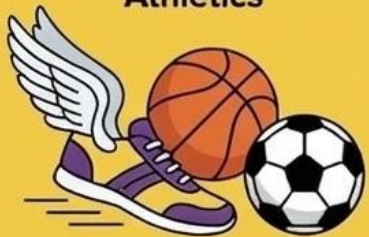
**Freshman Humanities/English  
Global Perspective Core**



**Visual & Performing Arts**



**Athletics**



**Student Activities, ASB,  
& Clubs**





# Maria Carrillo High School– CTE Pathways

**8TH GRADE  
AT RVMS**  
*(Coming 26/27 SY)*

**EXPLORING COLLEGE AND CAREERS**  
*A hands-on course that introduces multiple career industries and high school CTE pathways through lab activities.*



**CULINARY**



**HEALTHCARE**



**AUTO**



**ENGINEERING  
TECHNOLOGY**

**INTRODUCTORY**

CULINARY  
ARTS 1P



**CONCENTRATOR**

CULINARY  
ARTS 2P



**CAPSTONE**

CULINARY  
ARTS &  
HOSPITALITY P

SPORTS  
MEDICINE P



ATHLETIC  
TRAINING P

AUTO  
TECHNOLOGY  
1P



AUTO  
TECHNOLOGY  
2P

ROBOTICS 1P\*



COMING 27/28 SY  
PENDING COURSE  
APPROVAL

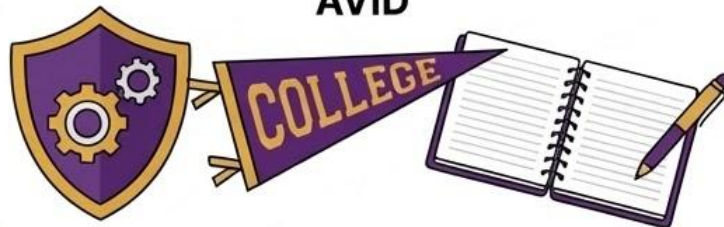


# Elsie Allen High School - Additional Programs & Offerings

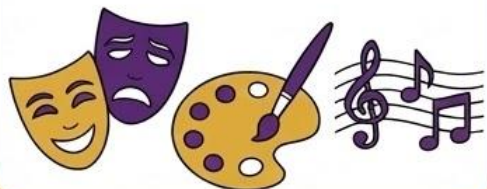
## AP Courses



## AVID



## Visual & Performing Arts



## Athletics

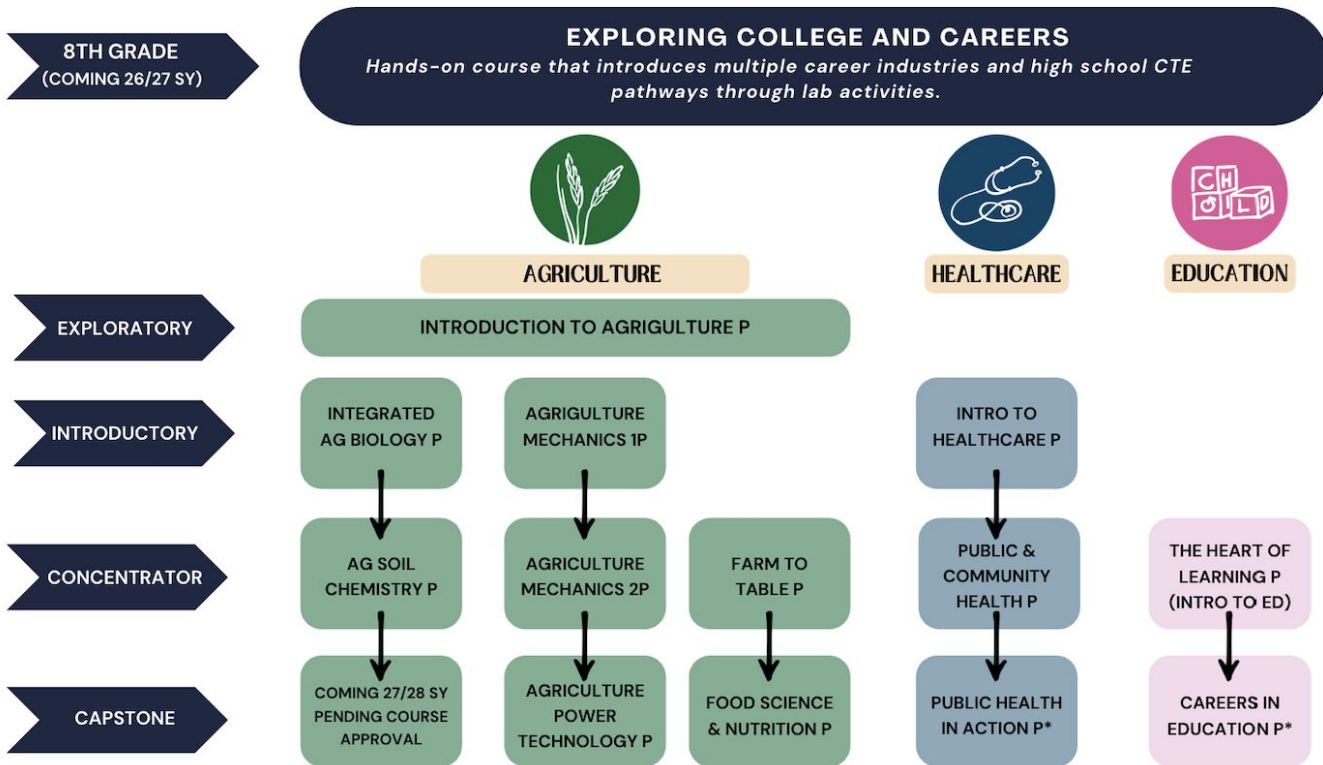


## Student Activities, ASB & Clubs





# Elsie Allen High School - CTE Pathways





## Elsie Allen High School - University Center Program

- A unique **partnership between EAHS and SSU** allowing students to be concurrently enrolled in SSU classes, at no cost to them, while earning their high school diploma
- **84 Students Enrolled** in the U.C. Program (9%)
- Students are **exposed to college level curricula** and the university exposure while maintaining access to the full high school experience
- Program is a **California School Board Association Golden Bell Award winner**
- Guarantees students admission to SSU with priority registration
- **College savings of \$10,000+**
  - ◆ **Free textbooks for EAHS students**
  - ◆ **Access to personalized counseling and support**

The University Center Program currently utilizes a TOSA at .4 FTE to support students and oversee program logistics.



# Montgomery High School– Additional Programs & Offerings

AP Courses



AVID



Visual &  
Performing  
Arts



Athletics



Student  
Activities,  
ASB &  
Clubs





# Montgomery High School–CTE Pathways

8TH GRADE

## EXPLORING COLLEGE AND CAREERS

*A hands-on course that introduces multiple career industries and high school CTE pathways through lab activities.*



BUSINESS

ENTREPRENEURSHIP  
P



BUSINESS COOP



HEALTHCARE

PATIENT CARE P



COMING 27/28 SY  
PENDING COURSE  
APPROVAL



CONSTRUCTION

INTRO TO GREEN  
CONSTRUCTION P



ADVANCED GREEN  
CONSTRUCTION P

CONCENTRATOR

CAPSTONE



## Montgomery High School– International Baccalaureate Program (IB)

- A **comprehensive curriculum with an international focus** that prepares students for college and career success
- **Over 350 Students Enrolled** in one or more IB courses (30%)
- The **first school in Sonoma County** to be recognized as an IB school
- Part of an international community of more than 4300 schools
- IB courses offer **recognition and credit at many colleges and universities**
- Moving in 26-27 to include the **Middle Years Program (MYP)** so that all students at Montgomery experience IB

The International Baccalaureate Program currently utilizes two TOSAs at a combined .8 FTE to support students and oversee program logistics.

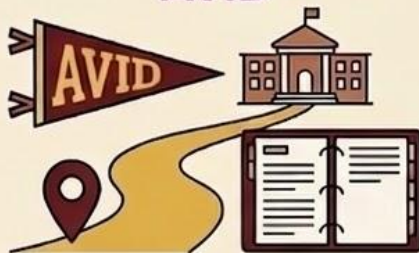
# P

## Piner High School– Additional Programs & Offerings

### AP Courses



### AVID



### Visual & Performing Arts



### Athletics



### Student Activities, ASB & Clubs





# Piner High School– CTE Pathways

8TH GRADE  
(TBD)

## EXPLORING COLLEGE AND CAREERS

*A hands-on course that introduces multiple career industries and high school CTE pathways through lab activities.*



CULINARY



HEALTHCARE



CONSTRUCTION



GEOSPATIAL

INTRODUCTORY

CULINARY  
ARTS 1P

HEALTH  
SCIENCE &  
BIOTECH 1P

INTRO TO  
ENGINEERING,  
CONSTRUCTION  
& DESIGN P

GIS I: MAPS &  
SPATIAL INFO P

CONCENTRATOR

CULINARY  
ARTS 2P

HEALTH  
SCIENCE &  
BIOTECH 2P

ADVANCED  
BUILDING  
TRADES P

GIS II:  
PRINCIPLES  
OF GIS P

CAPSTONE

CULINARY  
ARTS &  
HOSPITALITY P

HEALTH  
SCIENCE &  
BIOTECH 3P



# Piner High School– Early College Magnet Program

- A unique **partnership between PHS and SRJC** allowing students to be concurrently enrolled in SRJC classes, at no cost to them, while earning their high school diploma
- **Over 480 Students Enrolled** in the Early College Magnet Program (30%)
- Students are **exposed to college level curricula and the college exposure** while preserving their high school experience in the arts, athletics and student activities
- **Ability to transfer up to two years of SRJC college credits to UC, CSU and other private and public institutions** or continue at SRJC to earn an associates degree
- Several thousands of dollars **saved in college costs**
  - ◆ **Free textbooks for PHS students**
  - ◆ **Access to personal SRJC Counselor**

The Early College Magnet Program currently utilizes a TOSA at 1.0 FTE to support students and oversee program logistics.



# Santa Rosa High School– Additional Programs

## AP Courses



## Visual & Performing Arts



## Athletics

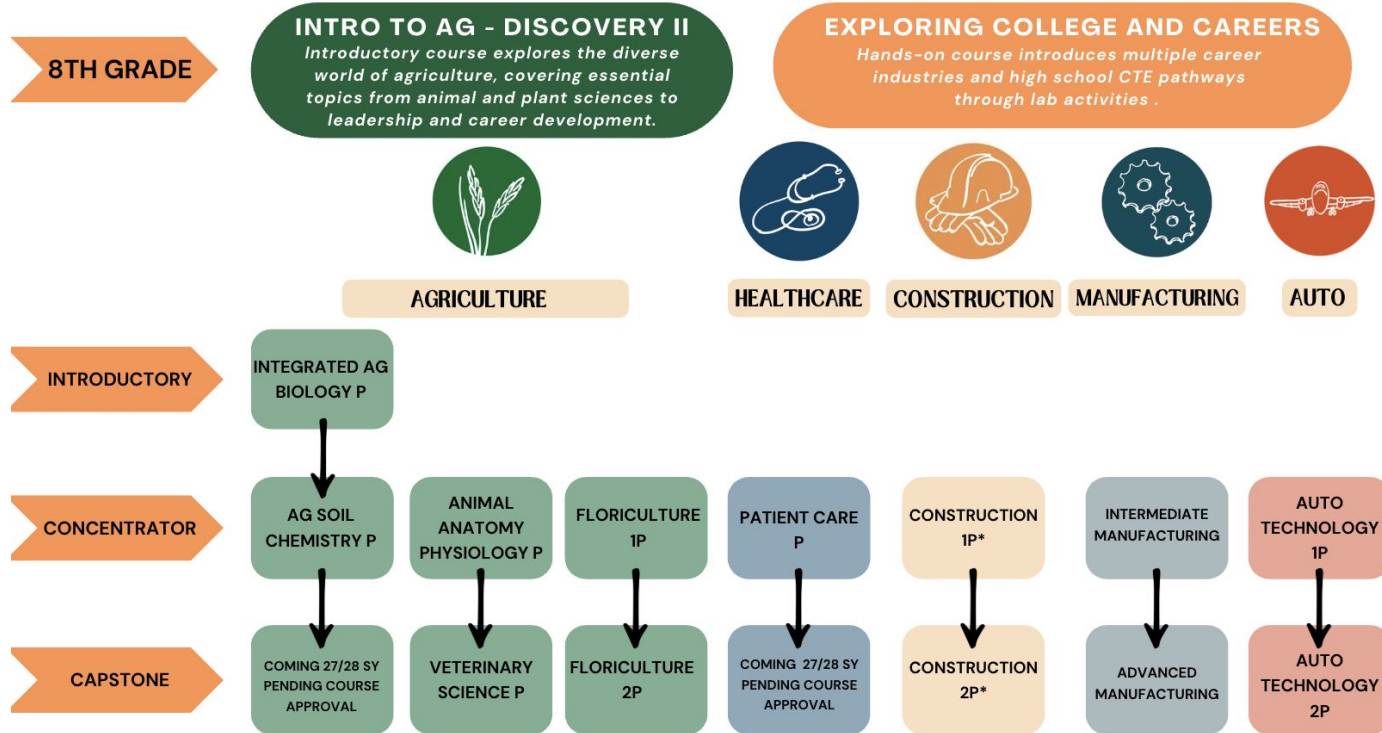


## Student Activities, ASB, & Clubs





# Santa Rosa High School– CTE Programs





## Santa Rosa High School– ArtQuest Program

- ArtQuest is an **award-winning magnet program** at Santa Rosa High School serving **over 350 students (26% of enrollment)** with a focus on visual and performing arts.
- Students engage in a **rigorous, arts-integrated curriculum** and participate in **annual fall and spring showcases** that highlight their work.
- ArtQuest promotes college and career readiness through **honors level courses, auditions and portfolio** preparation upon graduation
- The program has received **multiple recognitions**, including the Golden Bell Award, Jack London Award for Innovative Education, and the MetLife Foundation Award for Excellence in Community Engagement.

A 0.4 FTE TOSA supports program coordination, oversee program logistics, supports student opportunities, and fosters community partnerships.

# High School Program Enrollment Data

|                       | # Student in Sig Prog | % of Student Body | # Students in 1 or more AP classes | % of Student Body | # Students in CTE | % of Student Body |
|-----------------------|-----------------------|-------------------|------------------------------------|-------------------|-------------------|-------------------|
| <b>Piner</b>          | 431                   | 30%               | 88                                 | 6%                | 296               | 20%               |
| <b>Elsie</b>          | 84                    | 9%                | 110                                | 12%               | 391               | 42%               |
| <b>Montgomery Sr</b>  | 361                   | 30%               | 20 *                               | 2%                | 221               | 18%               |
| <b>Maria Carrillo</b> | xxxxxx                | xxxxxx            | 468                                | 30%               | 287               | 18%               |
| <b>Santa Rosa Sr</b>  | 363                   | 26%               | 135                                | 10%               | 306               | 22%               |

