



NORTH CAROLINA  
**Healthy Schools**

# Whole School, Whole Community, Whole Child

Ellen Essick, Ph.D.  
Section Chief, NC Healthy Schools

# NC State Board Goal: Every Student is Healthy, Safe and Responsible



*Healthy Responsible Students*

**North Carolina State Board of Education**

# CSH to WSCC



# Changes to our approach with SHACs

## Before

8 areas represented



## After

10 areas represented

Members are school  
champions or assigned by  
Superintendent



Intentional selection of  
community representatives  
and decision makers

Resources provided for  
activities



Professional development  
for making data-driven  
decisions

# Whole School, Whole Community, Whole Child Resolution

NORTH CAROLINA STATE BOARD OF EDUCATION

*Resolution Establishing a*  
**A WHOLE SCHOOL, WHOLE COMMUNITY,  
WHOLE CHILD FRAMEWORK**  
*for the State Board of Education*

- WHEREAS, the North Carolina Constitution declares that the people have a right to the privilege of education, and that it is the duty of the State to guard and maintain that right, and
- WHEREAS, the North Carolina Constitution establishes the North Carolina State Board of Education as a body whose duty is to make all needed rules and regulations as it supervises and administers the free public school system, subject to laws enacted by the General Assembly, and
- WHEREAS, the North Carolina State Board of Education acknowledges the critical linkages to education that help ensure the privilege of education for all of its children, including initiatives and programs that support student health and safety and that develop student responsibility, and
- WHEREAS, the Board acknowledges that other State and local agencies, along with educators, parents, and the community, have significant roles in meeting the needs of children and in removing barriers to their success, and
- WHEREAS, the barriers to success for many children include poverty, poor health, unsafe environments, lack of access to services and supporting infrastructure needed to support their long-term health and safety and that will ensure their access to a quality public education that strives for high academic achievement for all, and
- WHEREAS, research shows that the health of students is inextricably linked to their academic achievement, and
- WHEREAS, public schools, health agencies, parents and communities share a common goal of supporting the health and academic achievement of adolescents, and
- WHEREAS, *the Whole School, Whole Community, Whole Child model* emphasizes the relationship between educational attainment and health, by putting the child at the center of a system designed to support both, and
- WHEREAS, *the Whole School, Whole Community, Whole Child model* focuses attention on the preK-12 child; emphasizes a school-wide approach; and acknowledges learning, health, safety and the school as being a part and reflection of the local community, and
- WHEREAS, the Healthy Active Children policy is grounded in *the Whole School, Whole Community, Whole Child model* and requires that all Local Education Agencies maintain a School Health Advisory Council,
- NOW THEREFORE BE IT,
- RESOLVED, that the North Carolina State Board of Education adopts *the Whole School, Whole Community, Whole Child model* as a framework for supporting the health behaviors and academic performance of students, and
- RESOLVED, that the North Carolina State Board of Education directs staff to change the name of the North Carolina State Board Interagency Committee, whose work it is to identify wrap-around services needed by public school students and to ensure coordination and collaboration of these services from State agencies and related external partners, to now be known as the North Carolina State Board of Education Whole Child NC Committee, and
- RESOLVED, that, the North Carolina State Board of Education encourages Local Education Agencies to use *the Whole School, Whole Community, Whole Child model* as a framework for creating collaborative school/community relationships and improving students' learning and health, and
- RESOLVED, that Board members direct the Secretary to the State Board of Education to enter a copy of this resolution into the official minutes of the North Carolina State Board of Education.

  
William W. Cohey, Chairman  
North Carolina State Board of Education

  
June St. Clair Atkinson, State Superintendent  
North Carolina Department of Public Instruction

November 3, 2016

# Next Steps



# NC Students by the Numbers



# Health Data Collection

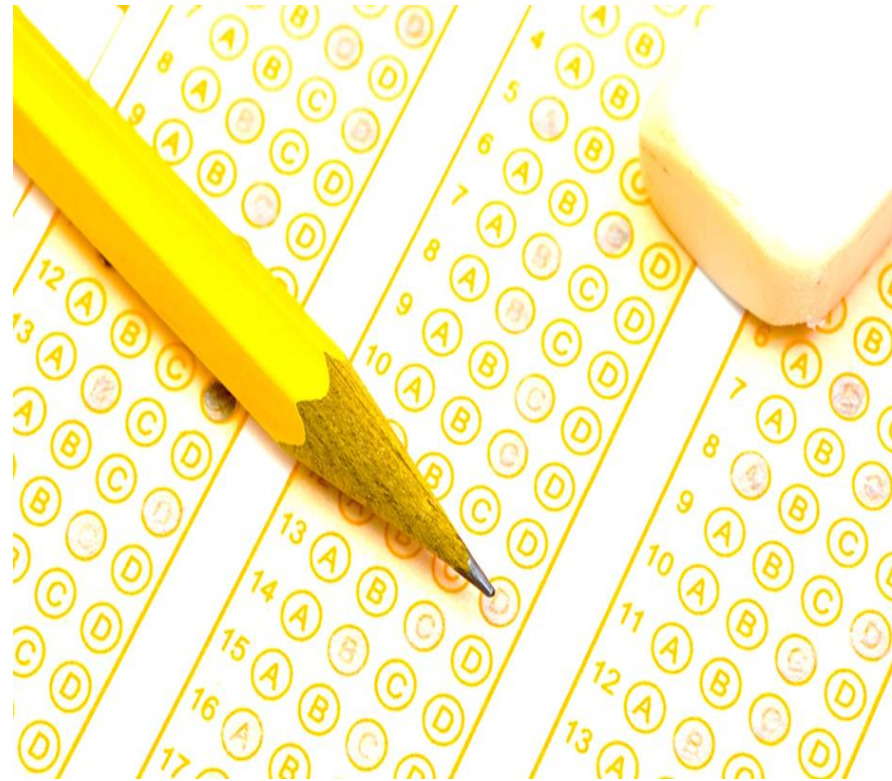
**HAC Progress Report**

**Youth Risk Behavior Survey**

**School Health Profiles**

**School Health Services Report**

**NC Teacher Working Conditions**



# Whole School, Whole Community, Whole Child



# YOUTH RISK BEHAVIOR SURVEY

# YRBS







# Health Education

**Percentage of High School Students Who  
Currently Smoked Cigarettes**


**2007**

**23%**

**2017**

**12%**





**Physical  
Education &  
Physical Activity**

**Percentage of High School Students Who Played Video or Computer Games or Used a Computer 3 or More Hours Per Day**

**2007**

**21%**

**2017**

**42%**





**Nutrition  
Environment  
& Services**

**Percentage of High School Students Who Did Not Eat Breakfast  
During the 7 Days Before the Survey**

**2007**

**17%**

**2017**

**14%**





**Health  
Services**

## **Average North Carolina School Nurse to Student Ratio**

**2006 – 2007**

**1:1,340**

**2016 – 2017**

**1:1,073**





**Counseling,  
Psychological &  
Social Services**

**Percentage of High School Students Who Felt Sad or Hopeless  
Every Day for  $\geq 2$  Weeks in a Row**

**2007**

**27%**

**2017**

**29%**



## Social & Emotional Climate

Percentage of High School Students Who Have Seen  
Other Students Being Bullied in Their School

2011

63%

2017

51%

## Social & Emotional Climate

Percentage of High School Students Who Were  
Electronically Bullied

**2011**

**16%**

**2017**

**14%**





## Employee Wellness

Percentage of High School Students Who Strongly Agree or Agree  
That Their Teachers Really Care About Them and  
Give Them a Lot of Encouragement

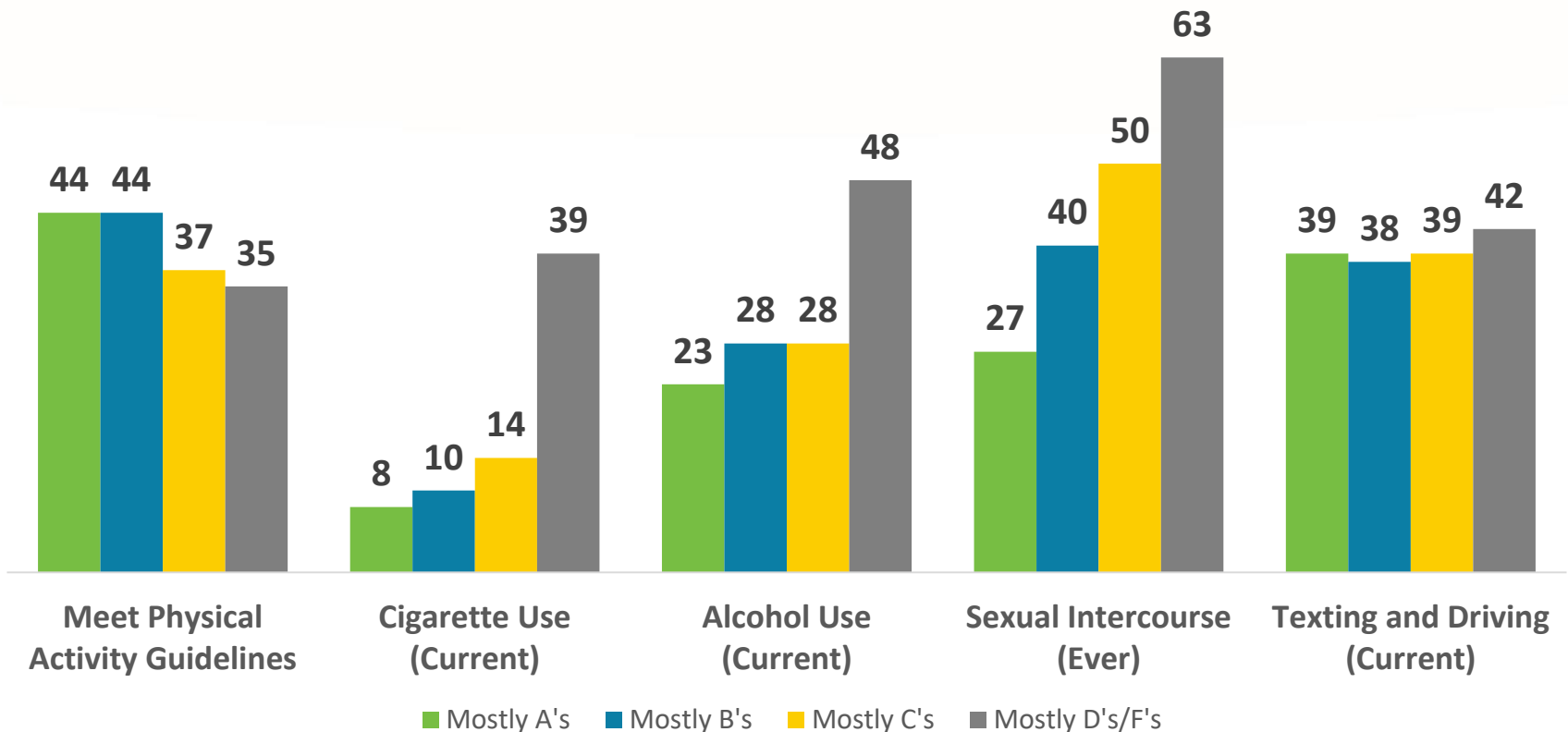
**2011**

**60%**

**2017**

**55%**

# Health and Academics 2017 NC HS



# Moving Forward...

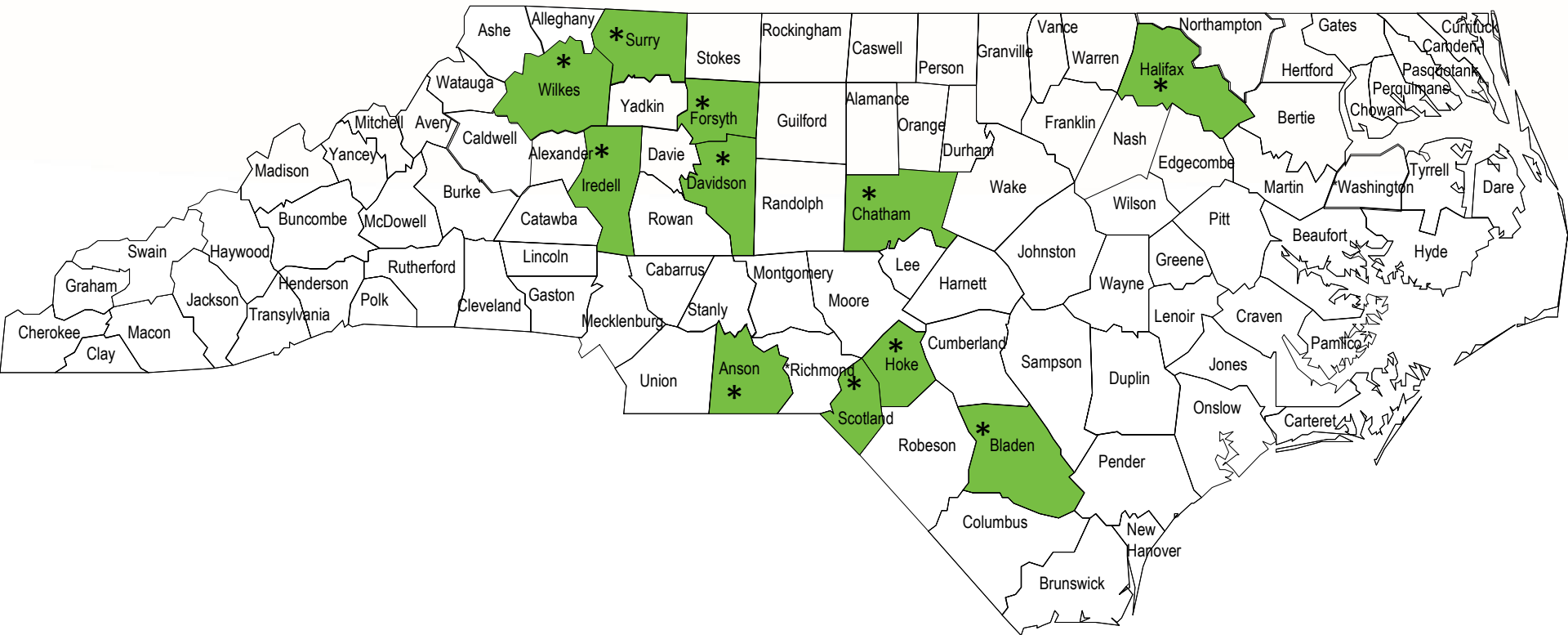


# NC WSCC Pilot Districts

- Anson County Schools
- Bladen County Schools
- Chatham County Schools
- Halifax County Schools
- Hoke County Schools
- Iredell-Statesville Schools
- Scotland County Schools
- Surry County Schools
- Thomasville City Schools
- Wilkes County Schools
- Winston-Salem/Forsyth County Schools



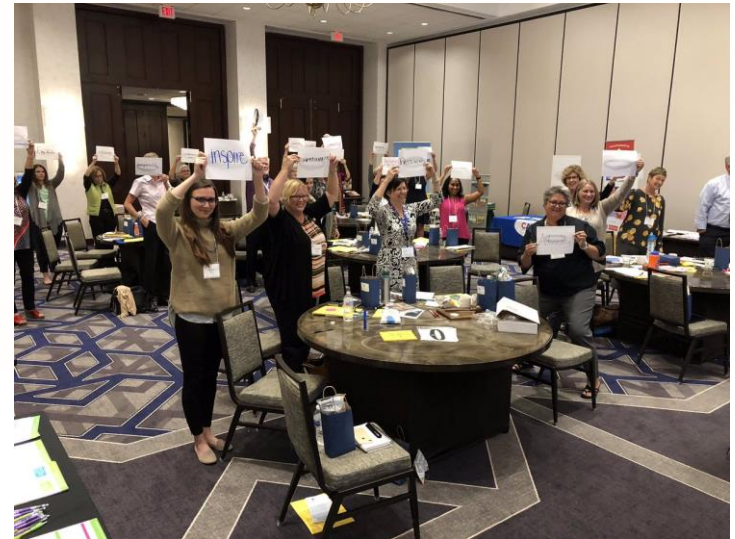
# NC WSCC Pilot Districts



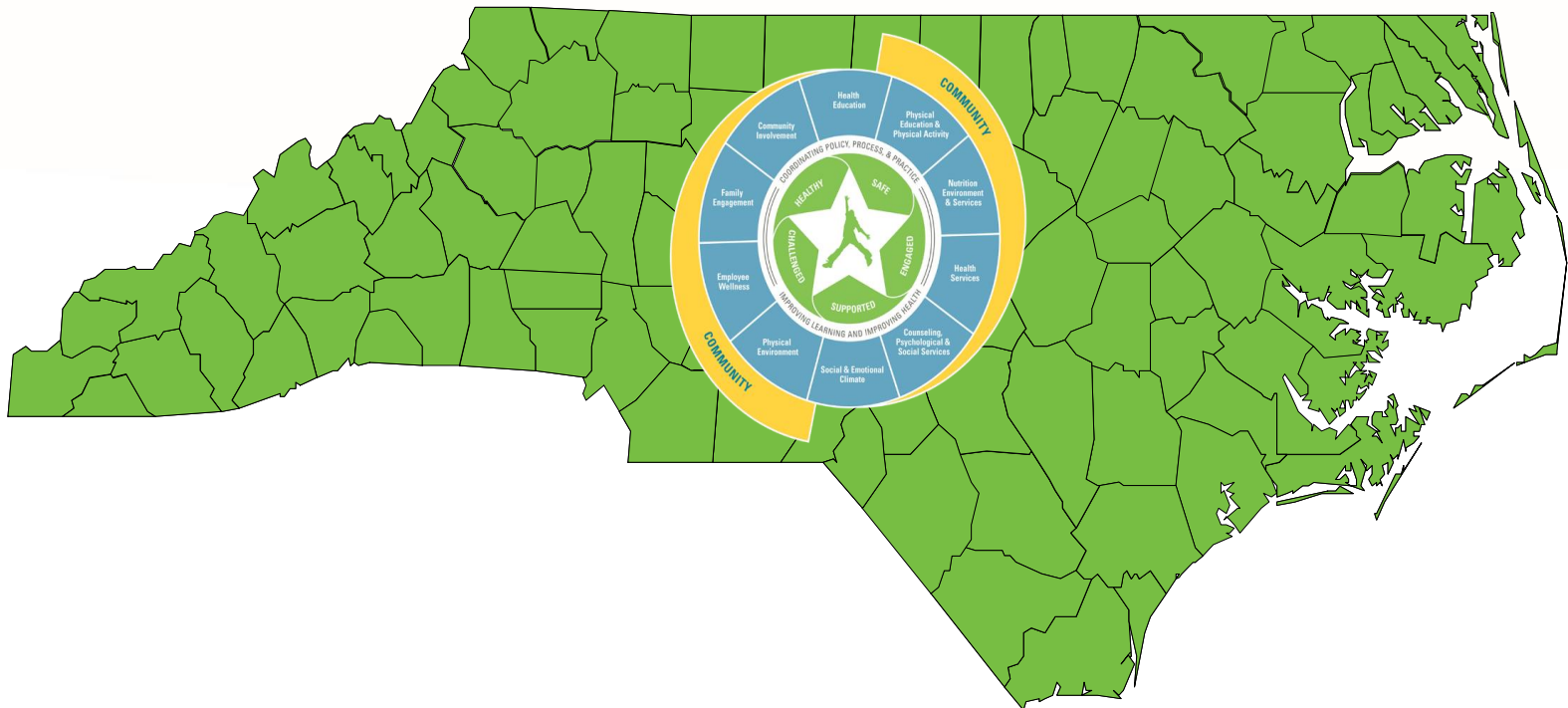
**Note:** Thomasville City Schools is LEA for WSCC Pilots, not all of Davidson.

# Infrastructure and Sustainability

- Dedicated staff and programs in State Education Agencies and State Health Departments across the country
- Included health indicators in school improvement/review processes
- Improved and increased school health policies, practices and assessments
- Established School Health Advisory Committees at the state and local levels
- Strengthened collaboration between the public health and education sectors



# Whole Child NC



# Whole Child NC

Established 9/3/2015 as an advisory committee to the State Board of Education.

Identifies and reviews the challenges of at-risk school-aged population such as poverty, safety, health and other non-academic barriers.

Makes recommendations to the State Board of Education, other state agencies and education stakeholder groups as to how best to facilitate access for all public school children to receive the opportunity for a sound basic education.

# Recommendations



# Data Driven Prevention + Data Responsive Problem Solving = Healthy School Environment



# WHOLE SCHOOL, **WHOLE COMMUNITY**, WHOLE CHILD

Healthy Children  
Learn Better

