



DeKalb County School District
Superintendent's Report
January 9, 2023



DeKalb County
School District

DeKalb County School District FY2024 School Resource Allocation Methodology Plan (RAMP)

Presented by:

Masana Mailliard

Interim Chief Financial Officer

Community of Stakeholders

with Experts, Advisors, Public, Involved Society and Key Champions



Experts, Advisors

Student data, benchmarks,
external reports

Public, Involved Society

State, Community, Advisory
Groups

Key Champions

Board of Education and
District Leaders, Staff and
Parents



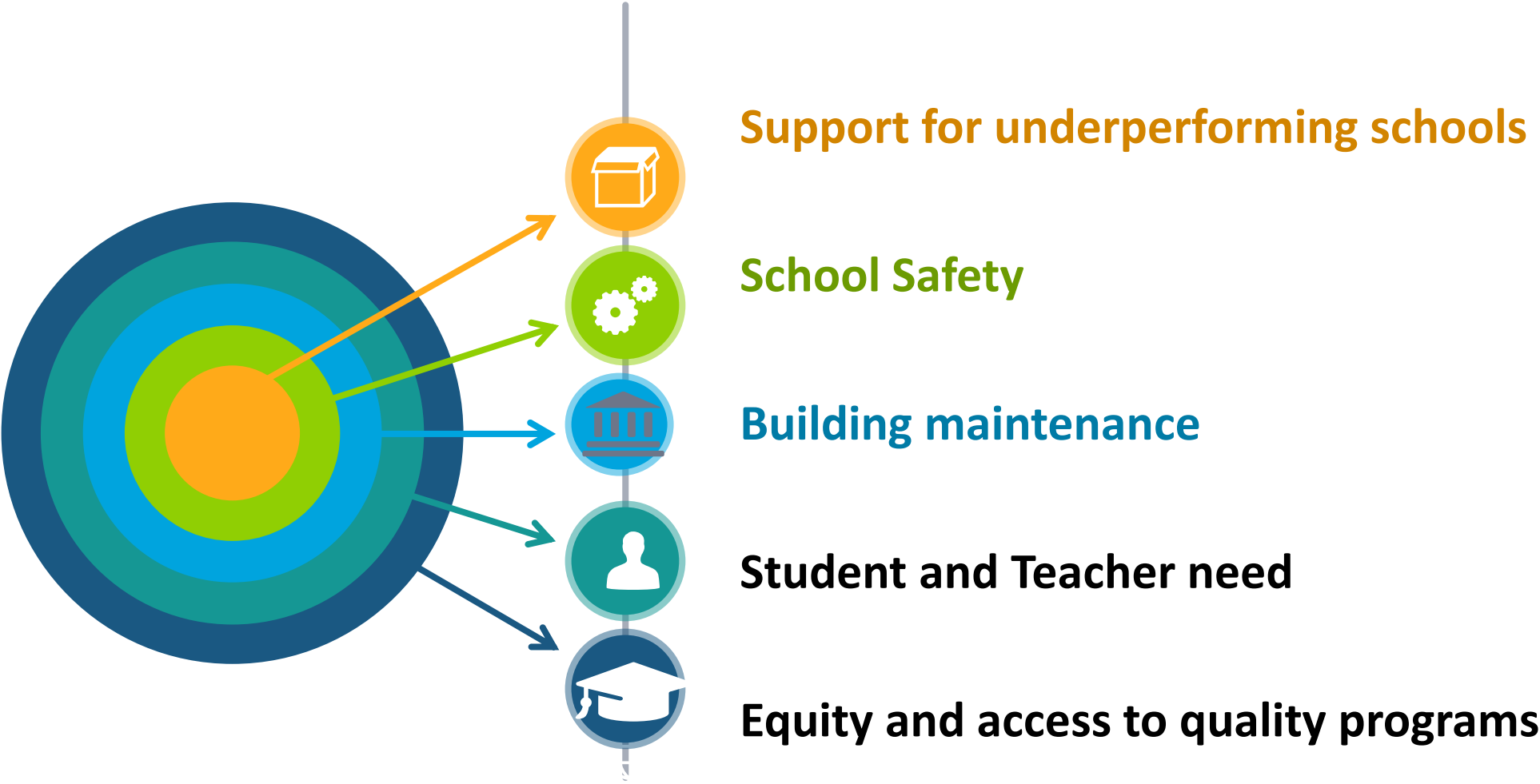
FY24 School Allotment Drivers







- Student Data (academic achievement)
- Community of Stakeholders
- Vision and mission
- Revenue assumptions



Core Areas of Focus for FY24 RAMP from Stakeholders



Some FY24 RAMP Enhancements:

- 1** **Basic Core Classes - Actual Teacher Need - formula uses October FTE Enrollment** 
- 2** **Horizon Schools – Added Mental Health Counselors, Teachers such as a Reading Specialist and Paraprofessionals** 
- 3** **Increased support - Custodians, Social Workers, Library Media Assistants, LTSEs, Registrars and Secretaries** 
- 4** **Included support for special programs, for example: Gifted, EIP, Theme schools and Magnet** 

RAMP Considerations

The Arts – Additional .50 for PE & Music for Small Schools to give them a fulltime teacher

Provide a fulltime special area teacher to support School-wide Professional Learning in small schools

Horizon School Support – 3 Options

Base Support

1 Mental Health Counselor & 1 10-Month Secretary

•Option #1

4 CSI Elementary School Paras

1 CSI Middle & High School Reading Specialist

•Option #2

4 CSI Elementary School Paras

1 CSI Elementary Teacher

•Option #3

4 CSI Elementary School Paras

RAMP Considerations

Clerical Support

12-Month Registrar for small Middle & High Schools (650 & under)

All Middle and High Schools should have a 12-Month Registrar regardless of enrollment

Academic Enrichment

Gifted Support - Determined by the number of gifted students

0-49 Students .50

50-99 Students 1.00

100-149 Students 1.50

150 & above 2.00

EIP/REP Support - Determined by percentage of EIP at each school

105 Additional Teachers

RAMP Considerations

Support Staff

- 1 School Psychologist per school (itinerant)
 - 1 Multi-Tiered System of Support (MTSS) per school
 - 1 Lead Teacher Special Education(LTSE) per school (itinerant)
 - 1 Social Worker per school (itinerant)
 - 1 Library Media Assistant (LMA) per school (itinerant)
- Itinerant Positions are serving less students

Special Program Support

- 1 Theme School Teacher

School Safety

- 2 Police Officers per High School
- 3 Campus Supervisors per Middle School
- 4 Campus Supervisors per High School

Custodians

- Added 66 Custodians
- FY23 714
- FY24 780

RAMP Considerations

Major Supplemental School-based Support – Federal Funds

- Title I Part A – e. g. Teachers, Paraprofessionals, Academic Coaches
- Title I, School Improvement – e.g Teachers, Academic Coaches
- Title II A – Class Size Reduction Teachers
- ESSER III – American Rescue Plan (ARP) – MTSS

RAMP – Next Steps

- Publish FY24 RAMP document - January
- Meet with Principals to share FY24 Allotments – February
- Adopt FY24 Budget – June 2023
- Formally submit FY24 RAMP to the Georgia Department of Education – July 1
- Monitor FY24 – October 2023 – Cycle FTE Reporting for district balancing and comparability adjustments



QUESTIONS



TM

DeKalb County

School District