

Measures of Academic Progress (MAP)


An Overview of MAP and its Benefits to DCSD Stakeholders



Assessments

- (MPG) MAP for Primary Grades**
 - Grades K-2
 - Reading and Math
- MAP**
 - Grades 2-12
 - Math
 - Reading
 - Language Usage
 - Science Grades 3-8
- Skills Navigator**
 - Grades 3-8 Reading and Math
 - Progress Monitoring and Remediation

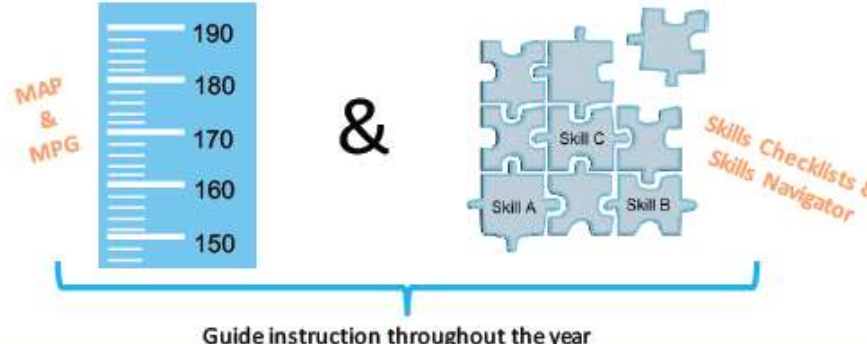
The Test



To Ensure Students Are Working Towards Success, We Must Ask Two Key Questions:

Progress: Is this student growing as expected?


Mastery: What skills has this student developed? What comes next?



MAP & MPG

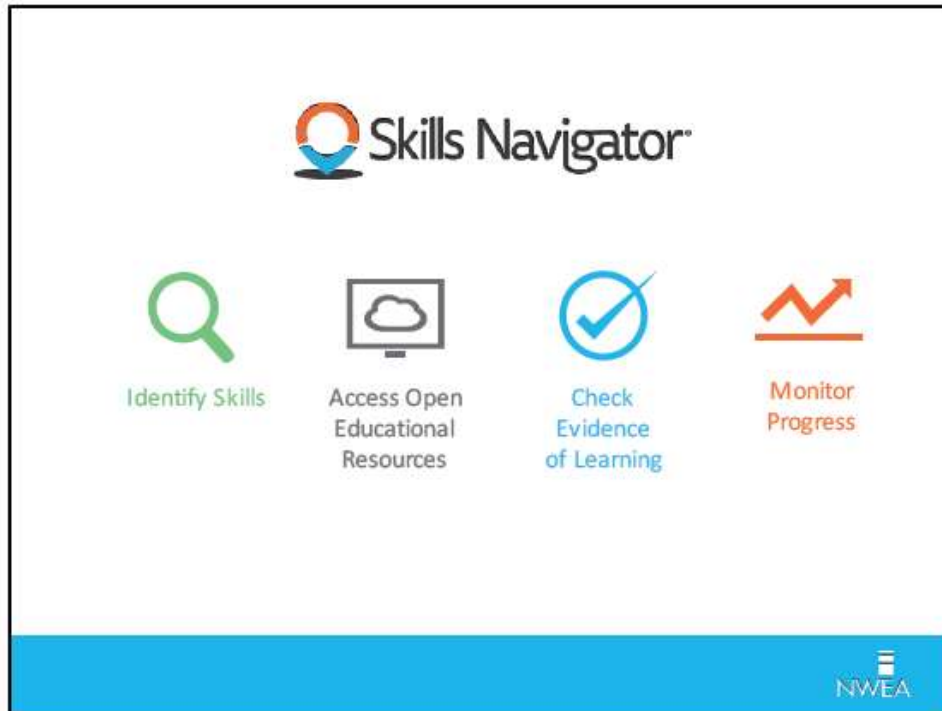
Skills Checklists & Skills Navigator





Guide instruction throughout the year



MAP provides a full range of assessments for reading and math (grades K-2) for math, reading, and language usage (grades 2-12), and for science (grades 3-8). MAP assessment data is then used in MAP Skills Navigator to establish student-specific learning paths with skills-based activities for students in grades 3-8 in reading and mathematics.

MAP Skills Navigator



 Identify Skills	<ul style="list-style-type: none">▪ Skills Locator saves time in the classroom by quickly finding discrete missing skills▪ Identify skills in math, language usage, reading comprehension, and vocabulary
 Access Open Educational Resources	<ul style="list-style-type: none">▪ Individualize learning with professionally-evaluated free online student activities▪ Dashboards allow students to view and access all assigned resources anywhere, anytime
 Check Evidence of Learning	<ul style="list-style-type: none">▪ Mastery Checks quickly and easily measure skills to ensure mastery▪ Use as often as needed to gain useful data in as few as 5 minutes
 Monitor Progress	<ul style="list-style-type: none">▪ Dashboards support and inform Response to Intervention (RTI) progress monitoring▪ Easily track effectiveness of interventions for individual students

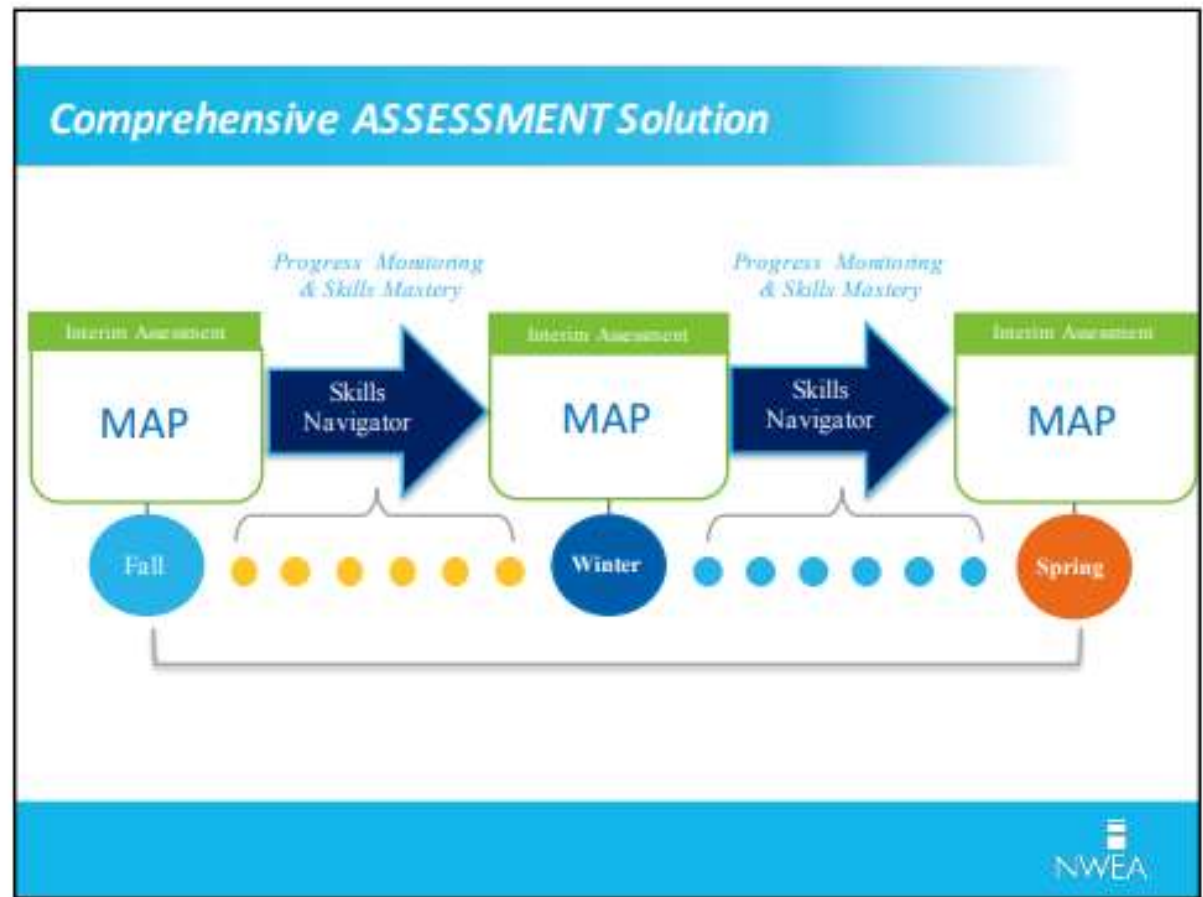
The NWEA logo is in the bottom right corner.

Schools in DCSD use MAP Skills Navigator activities to build missing foundational skills in math, language usage, reading comprehension, and vocabulary. Through Skills Navigator, students have access to open educational resources and free online activities. In addition, educators have access to dashboards to assist with Response to Intervention (RtI) progress monitoring, and to check for evidence of learning and student mastery.

MAP is a Comprehensive Assessment Solution

MAP is administered in the Fall, Winter, and Spring as a formative, interim assessment.

Administering MAP three times throughout the year assists educators with determining a student's current instructional level, provides progress monitoring information for acceleration and remediation, and determines year-end annual growth compared to the fall and prior years. Spring MAP data also helps to identify summer learning activities and potential fall placement.



The RIT (Rausch Unit) Scale

The RIT Scale

- Equal interval, grade-level independent, stable
- Designed to measure longitudinal growth over time
- Measures student achievement and test item difficulty
- **Ready for Instruction Today**

$X = [20d + 4m]^2$
 $Y = [11d + 8m]$

220
210
200
190
180
170
160

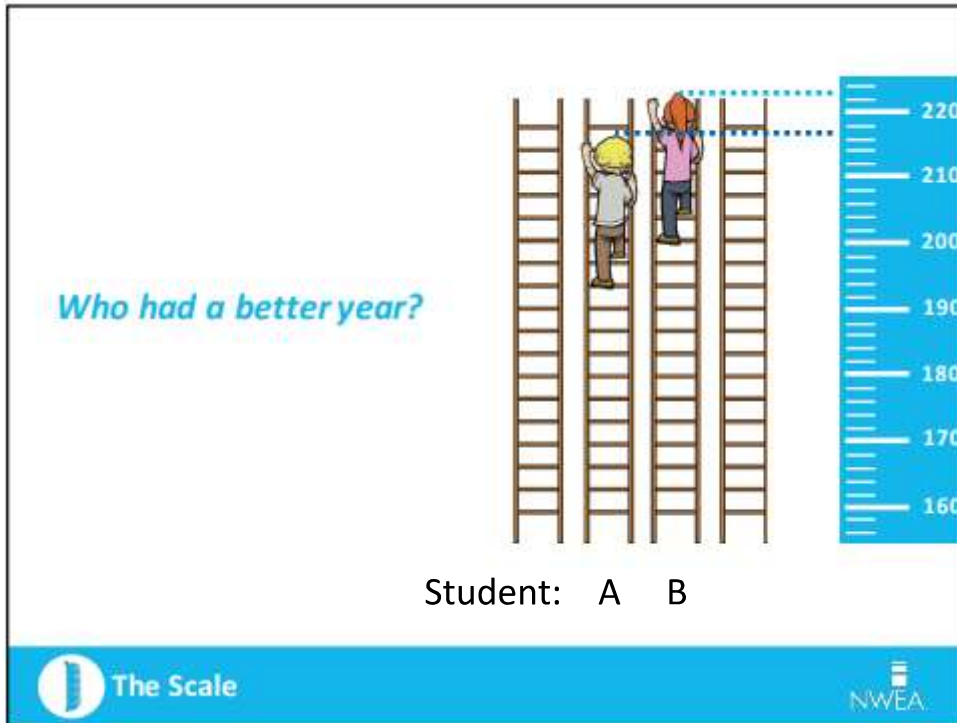
The Scale NWEA

The RIT score is an equal-interval scale, like feet and inches, that is independent of grade level.

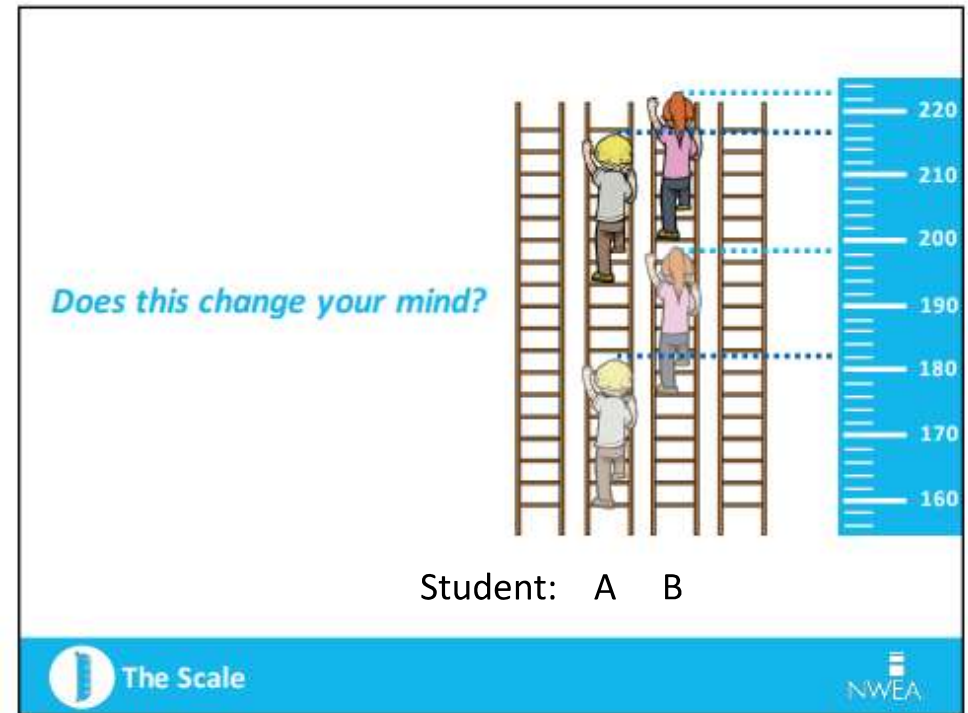
The RIT scale measures student achievement, so it allows educators to measure growth throughout the year and from year to year.

The RIT scale also measures test item difficulty.

The RIT (Rausch Unit) Scale



Student B has a higher RIT score than Student A



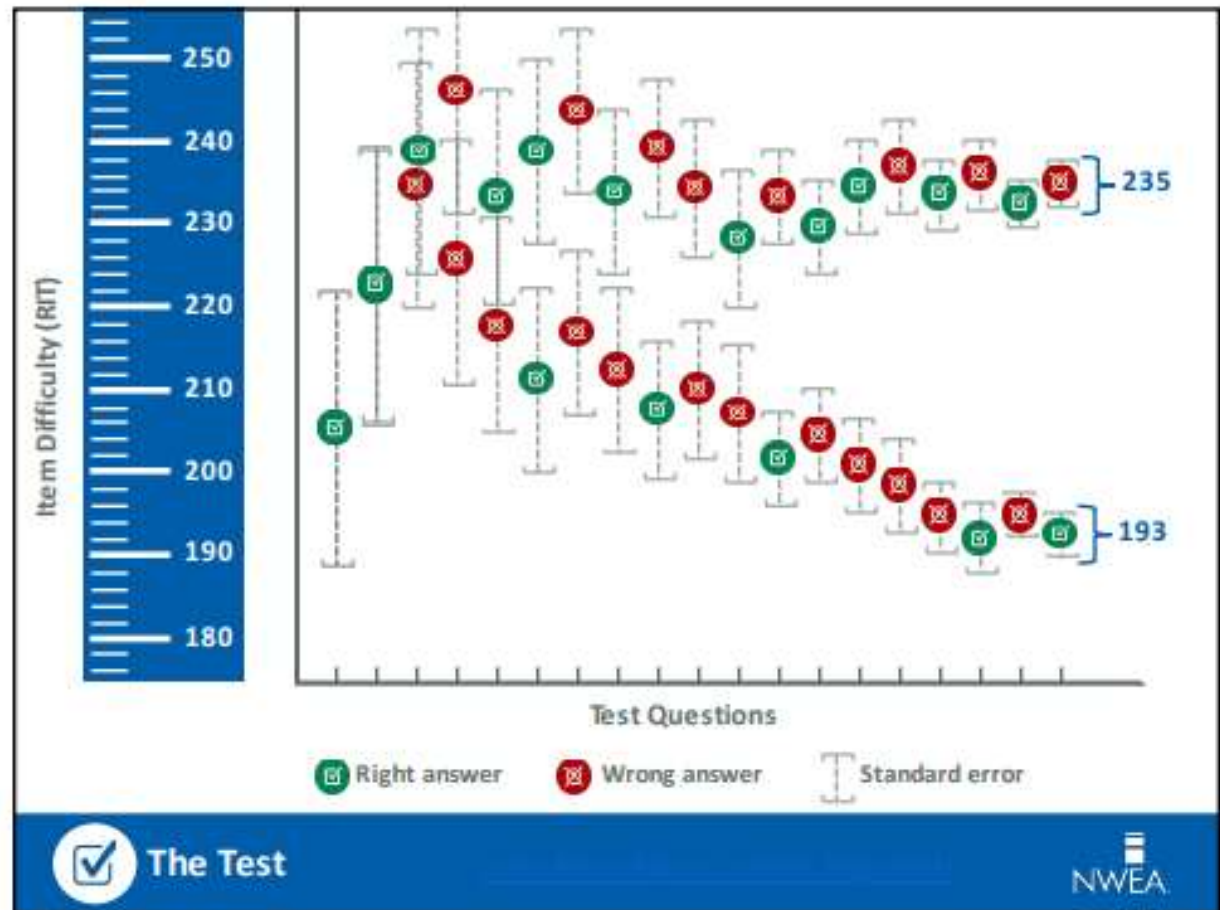
Student A demonstrated more growth than Student B

MAP Assessments are Computer-Adaptive


The test adjusts as students get answers correct or incorrect, as illustrated by the graph to the right.

As students get test items correct, the RIT item difficulty increases, and when a student gets a question wrong, the RIT item difficulty decreases.

The assessment will continue to adjust to determine the student's RIT instructional level.




MAP Test Items



A horizontal bar chart titled "MAP TEST ITEMS" showing the breakdown of 40,000 total test items. The bar is divided into four segments: a dark blue segment for "Total Items in MAP Item Pool" (40k), an orange segment for "MC" (35k), another orange segment for "TEI" (5k), and a green segment for "DOK 2 & 3" (20k).

Total Items in MAP Item Pool	MC	TEI	DOK 2 & 3
40k	35k	5k	20k

The Test 

40,000 total test items

35,000 are multiple choice

5,000 are technology enhanced items

Half of the total test items (20,000) are at Depth of Knowledge (DOK) 2 and 3

Sample
MAP
Technology
Enhanced
Items
(TEIs)

40

Drag the comma to the correct places in the sentences.

After the Civil War came the process of rebuilding the South. The region needed to build or repair schools churches hospitals roads bridges and railways. It was a long and difficult process.

Next

The Test NWEA

40

A student made this list of his characteristics. Click on all the characteristics that are inherited.

Student Characteristics

- 1.4 m tall
- Reads well
- Brown eyes
- Short hair
- Speaks English
- Plays drums
- Uses cellphone
- Left handed
- Tells jokes

Next

The Test NWEA

40

The table shows family size and recycling information for several different families. Drag the points onto the graph to make a scatter plot of the data.

Family Size	Pounds of Recycling
3	19
4	22
2	22
5	32
3	28
3	18
5	34

Family Recycling

Next

The Test NWEA

40

Drag and drop the stages of the life cycle of a frog into the diagram in the correct order.

Next

The Test NWEA

MAP Reports

Student Level

- Student Profile
- Family Report
- Student Progress
- Student Goal Setting Worksheet
- K-2 Screening and Skills Checklist

Class Level

- Class Report
- Learning Continuum
- Class Breakdown by RIT, Goal or Projected Proficiency
- Achievement Status and Growth Summary
- K-2 Screening and Skills Checklist

School/District Level

- Grade Report
- Grade Breakdown
- Retest Recommended
- Projected Proficiency Summary
- Student Growth Summary
- District Summary

Insights at Every Level

Students

- Students use MAP results to **set growth goals** for themselves – deepening their engagement and ownership of learning.

Teachers

- Teachers **differentiate instruction, identify instructional resources, and collaborate** with the child's whole learning team to monitor growth.

School and District Leaders

- Administrators use the data for **flexible grouping, program evaluations, resource allocation and proficiency projections.**

 **The Reports**

College and Career Readiness Connections

NWEA
National Education Assessment

College Readiness Benchmarks & Placement Guidance

- Provides predications for students to achieve ACT benchmarks in grades 5-9

MATHEMATICS			K	1	2	3	4	5	6	7	8	9	10	11	2015 Norms Percentile
CCR (Smarter-Balanced Level 3*)	Spring					207	218	228	232	236	240			244	61-68
CCR (ACT ≥ 22)	Spring							226	232	238	243	246			61-74
CCR (ACT ≥ 24)	Spring							230	237	243	248	252			70-83
NWEA	Fall	165	184	199	212	225	236	243	250	256	260	262	266		95
NWEA	Fall	155	175	190	203	216	226	233	239	244	248	250	253		84
NWEA	Fall	148	169	183	197	209	219	225	231	235	239	240	243		69
NWEA Median	Fall	140	162	177	190	202	211	218	223	226	230	230	233		50
NWEA	Fall	133	156	170	184	195	204	210	214	217	221	220	223		31
NWEA	Fall	125	150	164	177	188	197	202	206	209	212	211	213		16
NWEA	Fall	118	143	157	171	182	190	195	198	200	204	201	204		7

A student score at or above the following scores on a 6+ Mathematics Survey with Goals test suggests student readiness for:
 230 Introduction to Algebra; 235 Algebra; 245 Geometry

*Please note that the Smarter-Balanced proficiency cut scores were revised last year and subject to change.

<https://www.nwea.org/content/uploads/2015/06/MAP-College-Readiness-Benchmarks-Study-AUG15.pdf>

Use your MAP score to explore colleges and universities

Interested in learning which colleges might be a good fit for you?

Select the grade and level where you took the Measure of Academic Progress® (MAP®). Then set the ACT score cutoff to 24 or the ACT score for your target college. MAP reading and math scores allow you to find your colleges. Check the map to see the colleges that fit your score and try to be near the target school of students who are fresh out of high school. Select an area score, you can have a good idea of getting into their schools.

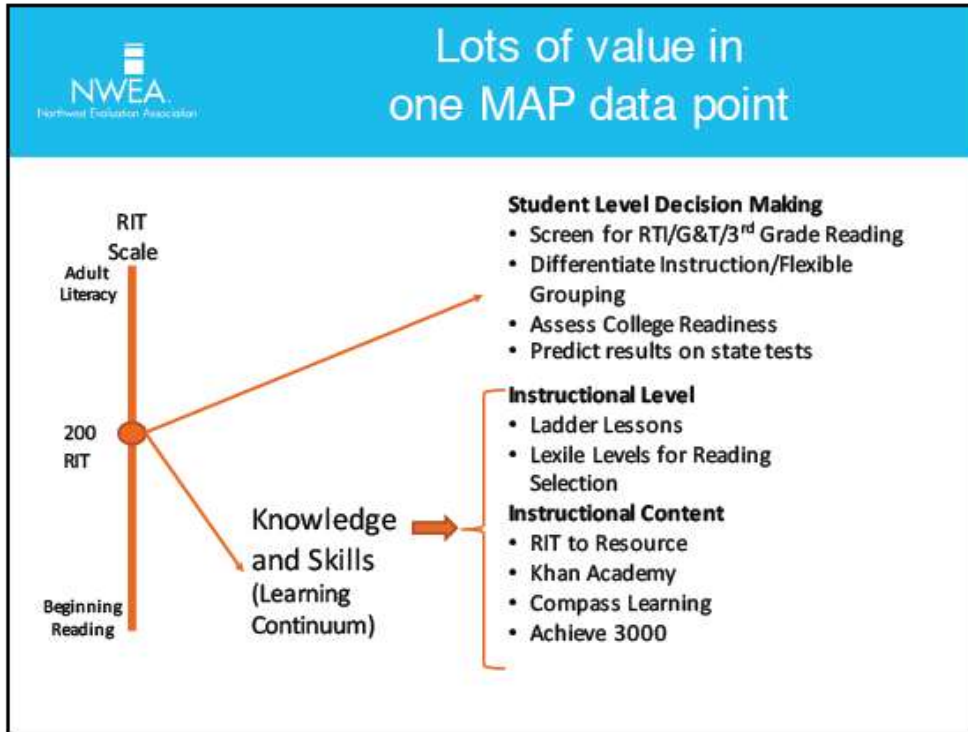
Click on a college to learn more about that school.

GO to LIVE DEMONSTRATION

NWEA's NEW College Interactive Tool!

Besides Georgia Milestones End-of-Grade proficiency projections, MAP also provides predictions for students to attain college and career readiness benchmarks as measured by ACT and SAT. Students can also use their MAP scores to explore potential colleges.

RIT Score Uses



Instructional Content Providers

noredink

Classworks

CompassLearning[®]

Edgenuity[™]

triumphlearning[™]

Study Island[™]

Odysseyware[™]

ACHIEVE3000[™]

Silverback Learning Solutions

The Data

NWEA

MAP RIT scores can be used in a multitude of ways. Scores can be used for screening (RtI, gifted), to determine differentiated instructional groups, to determine a student’s projected proficiency on state assessments, to assess college readiness, and to pinpoint a student’s instructional level, including a Lexile range for selecting text. In addition, MAP has several instructional content provider partners who can utilize a student’s RIT score to establish learning pathways within their respective systems.

Professional Learning Options

A graphic titled "Professional Development" with a list of three options: Workshops (MAP Foundation Series), Data Coaching Services, and Online Learning (Destination PD). The background shows a blurred image of people in a meeting. The graphic includes logos for "The Support" and "NWEA" at the bottom.

Professional Development

- Workshops
(MAP Foundation Series)
- Data Coaching Services
- Online Learning
(Destination PD)

The Support

NWEA

NWEA offers face-to-face workshops, data coaching services, and online learning as part of our contract renewal.

Annually, the Office of Assessment Administration offers MAP training for all new teachers and administrators, offers refresher courses as needed, and sends district coordinators to school locations to assist staff in using the MAP test administration system and interpreting reports.