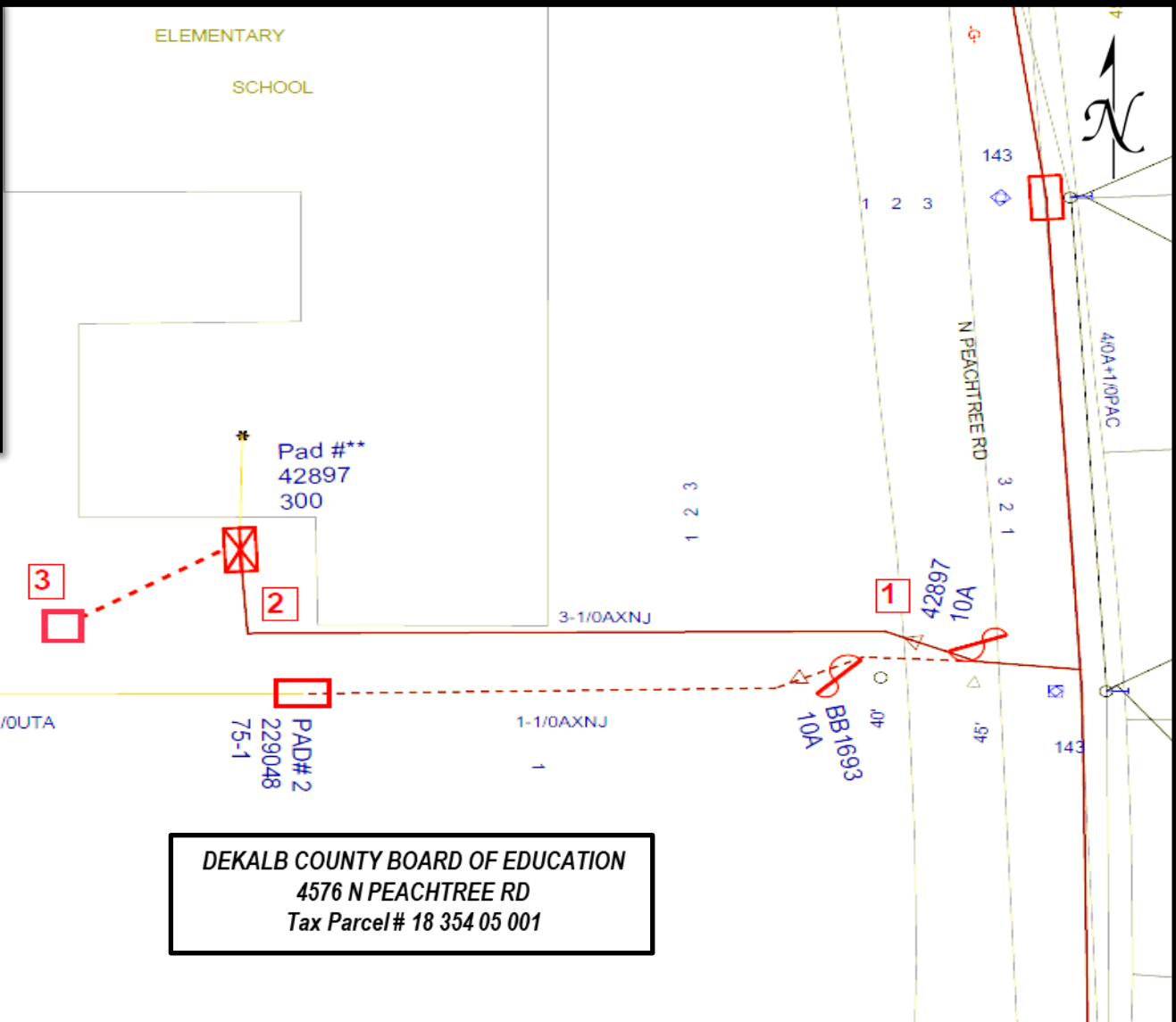


WL 1:
 RM: 10Amp Fuse
 IN: 65 Amp Fuse

 IN: 3 Splices
 IN: Splice Pit
 IN: Bore 20ft 3-1/0AXNJ

 WL 2:
 IN: Pad
 IN: 300 KVA XMFR 277/480
 New T#1166542
 IN: XMFR Accessories



DEKALB COUNTY BOARD OF EDUCATION
 4576 N PEACHTREE RD
 Tax Parcel# 18 354 05 001





Georgia Power
 Land Department

Exhibit "A"
 Parcel 001

4576 N PEACHTREE RD (DEKALB COUNTY)
DISTRIBUTION LINE
LIMS #2024040354
Work Location(s): 2,3

DRAWING NOT TO SCALE