

TransPerfect Connect

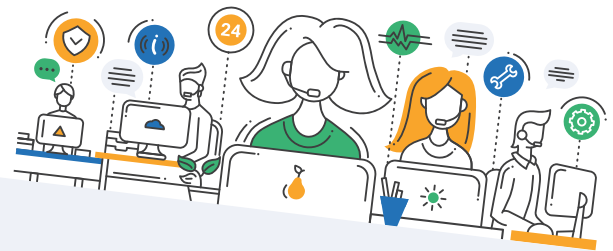
With a network of **over 100 offices**, TransPerfect Connect is the world's leading provider of device-independent, real-time remote interpretation services. Our **state-of-the-art technology**, **secure contact centers**, and **expert interpreters** enable you to access a wide range of solutions within seconds—in over 170 languages.

Expert Interpreters

- ✓ Extensive Network with Validated Experience
- ✓ Rigorously Tested and Continuously Trained
- ✓ Educated in Cultural Terms, Trends, and Nuances
- ✓ Ability to Scale Quickly and Seamlessly
- ✓ Customized Solutions to Fit Your Exact Needs
- ✓ Stringent Background and Education Checks
- ✓ Demonstrated Expertise in Specialization Area

360° Solutions

- ✓ Reduce Costs
- ✓ Access Industry Expertise
- ✓ Utilize Flexible Options
- ✓ Protect Your Data
- ✓ Implement 24/7 Workflows
- ✓ Support High Volumes
- ✓ View Real-Time Performance



Omnichannel Solutions



Over-the-Phone Interpretation



Video Remote Interpretation



On-Site Interpretation



Website Localization



Language Assessment



Business Process Outsourcing



Multilingual Email & Chat Support



Document Translation

Risk Mitigation

Secure Brick-and-Mortar Centers

White Room Policy

Staff Background Checks

Video Surveillance

No Storing of Confidential Information

Advanced Infrastructure

Strategic Locations

Distributed Data Centers

Multichannel Platform

Multilayered Security

Carrier-Class Equipment