

DEKALB COUNTY SCHOOL DISTRICT STAFFING REPORT

DATA AT A GLANCE for JULY 8, 2024 BOARD MEETING

CATEGORY	POSTINGS	NEW HIRES	SEPARATIONS	FY 2024 NEW HIRES	TOTAL EMPLOYEES
Teachers	389.5	0	104	1017	5728
Bus Drivers/Subs	215	0	0	104	624
Other Certified Support	163	0	0	187	629
Paraprofessionals	162	0	0	305	939
Central Office	67	42	5	280	858
Custodial	60	5	8	196	749
Food Service	57	0	0	156	643
Operations	42	0	0	21	226
Community Coaches	37	1	0	13	133
Substitutes	36	5	0	409	1487
Nurses	26	0	0	25	108
Clerical Support	17	1	2	83	495
APs/Principals	6	7	9	43	356
Public Safety/SROs	4	0	0	41	287
Teacher Assistants	2	0	0	57	76
Counselors	1	0	2	24	269
Transportation	1	0	1	47	227
Federal Programs	0	0	1	88	305
	1285.5	61	132	3096	14139

FY 2024 New hires column represents all new hires with a July 1, 2023 start date or later

Data Source: Frontline, Munis, and Crosspointe

DEKALB COUNTY SCHOOL DISTRICT STAFFING REPORT

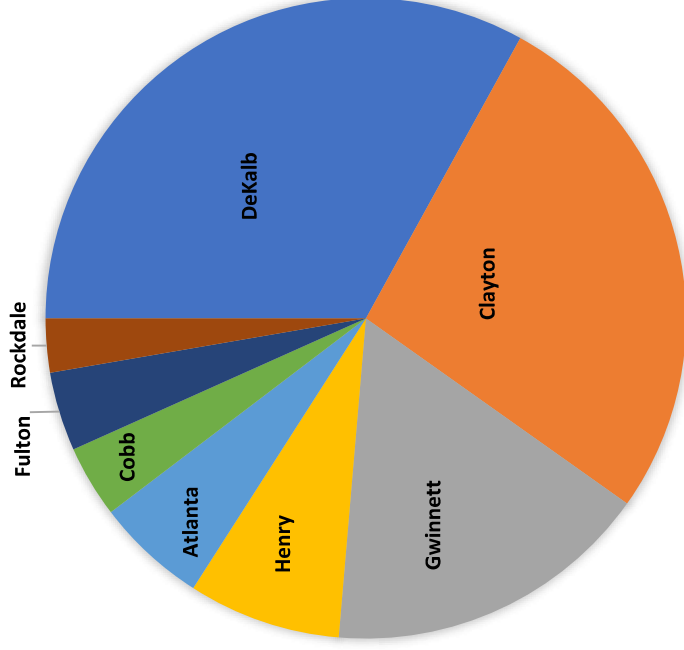
METRO ATL TEACHER POSTINGS DISTRICT COMPARISON as of July 8, 2024

County	Postings	Teachers	%filled	Type
DeKalb	389.5	5728	93.00%	Individual Positions
Clayton	316	3259	90.00%	Individual & Pools
Gwinnett	195	11746	98.00%	Individual Positions
Henry	91	2661	97.00%	Individual Positions
Atlanta	66	4076	98.00%	Individual & Pools
Cobb	43	7331	99.00%	Individual Positions
Fulton	47	6900	99.00%	Individual & Pools
Rockdale	32	1208	97.00%	Individual & Pools

*Note: DCSD only posts/hires on individual positions where other districts post pool positions and may hire 15 or more candidates for 1 posted position.

DCSD TEACHER POSTINGS by BOARD DISTRICT & CENTRAL OFFICE					
District	Postings	Teachers	Regular Ed	Special Ed	%filled
1	44	882	31	13	95.00%
2	28.5	604	23.5	5	95.00%
3	66.5	839	52.5	14	92.00%
4	56.5	950	45.5	11	94.00%
5	60.5	830	49.5	11	93.00%
6	59.5	924	50	9.5	94.00%
7	65	676	53	12	90.00%
CO	9	23	5	4	61.00%
TOTAL	389.5	5728	310	79.5	93.00%

METRO ATL TEACHER POSTINGS





Division of Human Resources

Teacher Postings

District 1

<u>LOCATION</u>	<u>JOB TITLE</u>	<u>PT-FT</u>
Austin Elementary	Teacher, Grade 3	1.00
Austin Elementary	Teacher, PreK Special Ed.	1.00
Austin Elementary	Teacher, Sp Ed Kindergarten	1.00
Chamblee High	Teacher, ESOL	1.00
Chamblee High	Teacher, ESOL	1.00
Chamblee High	Teacher, Interrelated	1.00
Chamblee High	Teacher, Science - HS	1.00
Chamblee Middle	Teacher, Interrelated	1.00
Chesnut Elementary	Teacher, ESOL	1.00
Chesnut Elementary	Teacher, Grade 3	1.00
Chesnut Elementary	Teacher, Grade 4	1.00
Chesnut Elementary	Teacher, Interrelated	1.00
Doraville United Elem	Teacher, Grade 5	1.00
Doraville United Elem	Teacher, Grade 5 Math	1.00
Doraville United Elem	Teacher, Kindergarten	1.00
Dunwoody Elementary School	Teacher, Grade 3	1.00
Dunwoody Elementary School	Teacher, Grade 4	1.00
Dunwoody High	Teacher, ESOL High School	1.00
Dunwoody High	Teacher, Family & Consumer HS	1.00
Dunwoody High	Teacher, Interrelated	1.00
Dunwoody High	Teacher, Physics High School	1.00
Dunwoody High	Teacher, Science - HS	1.00
Dunwoody High	Teacher, Spanish (HS)	1.00
Hightower Elementary School	Teacher, ESOL	1.00
Hightower Elementary School	Teacher, Grade 4	1.00
Hightower Elementary School	Teacher, Special Ed	1.00
Hightower Elementary School	Teacher, Special Ed	1.00
Huntley Hills Elem	Teacher, Interrelated	1.00
Kingsley Elementary	Teacher, Grade 1	1.00
Kingsley Elementary	Teacher, Grade 2	1.00
Kingsley Elementary	Teacher, Grade 4	1.00
Kittredge Magnet School	Teacher, Grade 4 Soc. Stud.	1.00
Montgomery Elementary	Teacher, Grade 2	1.00
Montgomery Elementary	Teacher, Interrelated	1.00
Montgomery Elementary	Teacher, Kindergarten	1.00
Peachtree Middle	Teacher, Interrelated	1.00
Peachtree Middle	Teacher, Interrelated	1.00
Peachtree Middle	Teacher, Math (MS)	1.00
Peachtree Middle	Teacher, Music - Orchestra	1.00

Division of Human Resources

Teacher Postings

District 1

<u>LOCATION</u>	<u>JOB TITLE</u>	<u>PT-FT</u>
Peachtree Middle	Teacher, Science (MS)	1.00
Peachtree Middle	Teacher, Science (MS)	1.00
Peachtree Middle	Teacher, Special Ed	1.00
Sequoyah Middle	Teacher, English Middle School	1.00
Sequoyah Middle	Teacher, English Middle School	1.00
District Total		44.00

District 2

<u>LOCATION</u>	<u>JOB TITLE</u>	<u>PT-FT</u>
Ashford Park Elem	Teacher, Interrelated	1.00
Briar Vista Elementary	Teacher, Grade 4	1.00
Briar Vista Elementary	Teacher, Interrelated	1.00
Briar Vista Elementary	Teacher, Montessori	1.00
Cross Keys High	ROTC, Navy Enlisted	1.00
Cross Keys High	Teacher, Mathematics - HS	1.00
Cross Keys High	Teacher, Occ Ed-Cosmetology	1.00
Cross Keys High	Teacher, Science - HS	1.00
Cross Keys High	Teacher, Social Studies (HS)	1.00
DeKalb Elem School of the Arts	Teacher, Grade 5	1.00
DeKalb Elem School of the Arts	Teacher, Grade 6 Math	1.00
Druid Hills High	Teacher, ESOL High School	1.00
Druid Hills High	Teacher, Music - Strings HS	1.00
Druid Hills High	Teacher, Physics High School	1.00
Druid Hills High	Teacher, Social Studies (HS)	1.00
Druid Hills High	Teacher, Spanish (HS)	1.00
Druid Hills Middle	Teacher, MID/MoID	1.00
Druid Hills Middle	Teacher, Science (MS)	1.00
Fernbank Elementary	Teacher, Pre-K Certified	1.00
Margaret Harris Comprehensive	Teacher, Special Ed	1.00
McLendon Elementary	Teacher, MOID	1.00
Montclair Elementary	Teacher, Art Elementary	1.00
Montclair Elementary	Teacher, EIP P/T Reading	0.50
Montclair Elementary	Teacher, Grade 5	1.00
Montclair Elementary	Teacher, Grade 5	1.00
Robert Shaw Theme	Teacher, Grade 2	1.00
Woodward Elementary	Teacher, Grade 1	1.00
Woodward Elementary	Teacher, Grade 2	1.00
Woodward Elementary	Teacher, Grade 5	1.00
District Total		28.50

Division of Human Resources

Teacher Postings

District 3

<u>LOCATION</u>	<u>JOB TITLE</u>	<u>PT-FT</u>
Barack H Obama Magnet of Tech	Teacher, Grade 4	1.00
Barack H Obama Magnet of Tech	Teacher, Kindergarten	1.00
Barack H Obama Magnet of Tech	Teacher, Special Ed	1.00
Cedar Grove Elem	Teacher, Grade 3	1.00
Cedar Grove Elem	Teacher, Interrelated	1.00
Cedar Grove Elem	Teacher, MOID	1.00
Cedar Grove Elem	Teacher, Title I Elem School	1.00
Cedar Grove High	ROTC, Navy Officer HS	1.00
Cedar Grove High	Teacher, Art PT	0.50
Cedar Grove High	Teacher, English - HS	1.00
Cedar Grove High	Teacher, Social Studies (HS)	1.00
Cedar Grove High	Teacher, Spanish (HS)	1.00
Cedar Grove High	Teacher, Spanish (HS)	1.00
Cedar Grove High	Teacher, Title I L/A	1.00
Cedar Grove Middle	Teacher, Behavior Disord GNETS	1.00
Cedar Grove Middle	Teacher, English Middle School	1.00
Cedar Grove Middle	Teacher, Math (MS)	1.00
Cedar Grove Middle	Teacher, Science (MS)	1.00
Cedar Grove Middle	Teacher, Science (MS)	1.00
Columbia Elementary	Pre-K Teacher	1.00
Columbia Elementary	Teacher, Grade 4	1.00
Columbia High	ROTC, Navy Officer HS	1.00
Columbia High	Teacher, English - HS	1.00
Columbia High	Teacher, Interrelated	1.00
Columbia High	Teacher, Science - HS	1.00
Columbia High	Teacher, Spanish (HS)	1.00
Columbia High	Teacher, Special Ed	1.00
Columbia High	Teacher, Special Ed	1.00
Flat Shoals Elementary	Teacher, Art Elementary	1.00
Flat Shoals Elementary	Teacher, Interrelated	1.00
Flat Shoals Elementary	Teacher, Title I Elem School	1.00
International Student Center	Teacher, ESOL	1.00
International Student Center	Teacher, Health & Physical Ed	1.00
Kelley Lake Elementary	Teacher, Kindergarten	1.00
McNair Discovery Learning	Teacher, Grade 5 Lang. Arts	1.00
McNair Discovery Learning	Teacher, Interrelated	1.00
McNair High	Teacher, Art High School	1.00
McNair High	Teacher, Culinary Arts HS	1.00
McNair High	Teacher, ESOL	1.00
McNair High	Teacher, ESOL High School	1.00
McNair High	Teacher, Mathematics - HS	1.00
McNair High	Teacher, Mathematics - HS	1.00
McNair High	Teacher, Music	1.00

Division of Human Resources

Teacher Postings

District 3

<u>LOCATION</u>	<u>JOB TITLE</u>	<u>PT-FT</u>
McNair High	Teacher, Science - HS	1.00
McNair High	Teacher, Spanish (HS)	1.00
McNair Middle	Teacher, ESOL	1.00
McNair Middle	Teacher, Science (MS)	1.00
Oak View Elementary	Teacher, Grade 3	1.00
Peachcrest Elementary	Teacher, Grade 2	1.00
Peachcrest Elementary	Teacher, Grade 2	1.00
Peachcrest Elementary	Teacher, Grade 3	1.00
Peachcrest Elementary	Teacher, Interrelated	1.00
Peachcrest Elementary	Teacher, Pre-K Certified	1.00
Peachcrest Elementary	Teacher, PreK Special Ed.	1.00
Shadow Rock Center (GNETS)	Teacher, Behavior Disord GNETS	1.00
Shadow Rock Center (GNETS)	Teacher, Interrelated GNETS	1.00
Snapfinger Elementary	Teacher, Grade 2	1.00
Snapfinger Elementary	Teacher, Grade 3	1.00
Snapfinger Elementary	Teacher, Grade 4	1.00
Snapfinger Elementary	Teacher, Interrelated	1.00
Toney Elementary	Teacher, Grade 2	1.00
Towers High	Teacher, Business Ed-Comp. HS	1.00
Towers High	Teacher, Interrelated	1.00
Towers High	Teacher, Interrelated	1.00
Towers High	Teacher, Mathematics - HS	1.00
Towers High	Teacher, Music	1.00
Wadsworth Magnet School	Teacher, English Middle School	1.00
District Total		66.50

Division of Human Resources

Teacher Postings

District 4

<u>LOCATION</u>	<u>JOB TITLE</u>	<u>PT-FT</u>
Briarlake Elementary	Teacher, Grade 2	1.00
Briarlake Elementary	Teacher, Interrelated	1.00
Briarlake Elementary	Teacher, S/PID	1.00
Brockett Elementary	Teacher, Grade 2	1.00
Brockett Elementary	Teacher, Grade 5	1.00
Brockett Elementary	Teacher, PT ESOL	0.50
Brockett Elementary	Teacher, Title I Elem PT	0.50
Dresden Elementary	Teacher, Computer Tech. ES	1.00
Dresden Elementary	Teacher, Grade 2	1.00
Evansdale Elementary	Teacher, French Immersion ES	1.00
Evansdale Elementary	Teacher, Grade 3	1.00
Hawthorne Elementary	Teacher, Grade 2	1.00
Henderson Middle	Teacher, ESOL Middle School	1.00
Henderson Middle	Teacher, ESOL - Part Time	0.50
Henderson Middle	Teacher, Math (MS)	1.00
Henderson Middle	Teacher, Science (MS)	1.00
Henderson Middle	Teacher, Social Studies (MS)	1.00
Henderson Middle	Teacher, Special Ed	1.00
Henderson Middle	Teacher, Special Ed	1.00
Henderson Mill Elem	Teacher, ESOL	1.00
Henderson Mill Elem	Teacher, Grade 3	1.00
Henderson Mill Elem	Teacher, Interrelated	1.00
Henderson Mill Elem	Teacher, Kindergarten	1.00
John Robert Lewis ES	Teacher, Grade 3	1.00
John Robert Lewis ES	Teacher, Grade 4	1.00
John Robert Lewis ES	Teacher, Grade 4	1.00
John Robert Lewis ES	Teacher, Grade 5	1.00
John Robert Lewis ES	Teacher, MID/MoID	1.00
John Robert Lewis ES	Teacher, Pre-K Certified	1.00
Lakeside High	Teacher, ESOL	1.00
Lakeside High	Teacher, ESOL High School	1.00
Lakeside High	Teacher, Interrelated	1.00
Lakeside High	Teacher, Music - Orchestra HS	1.00
Lakeside High	Teacher, Science - HS	1.00
Lakeside High	Teacher, Science - HS	1.00
Lakeside High	Teacher, Science - HS	1.00
Livsey Elementary	Teacher, Grade 5	1.00
Oak Grove Elementary	Teacher, Grade 1	1.00
Oak Grove Elementary	Teacher, Music - Band	1.00
Oakcliff Elementary	Teacher, Art Elementary	1.00
Sagamore Hills Elementary	Teacher, Kindergarten	1.00
Sagamore Hills Elementary	Teacher, STEM	1.00
Smoke Rise Elementary	Teacher, Grade 1	1.00

Division of Human Resources

Teacher Postings

District 4

<u>LOCATION</u>	<u>JOB TITLE</u>	<u>PT-FT</u>
Smoke Rise Elementary	Teacher, Special Ed	1.00
Smoke Rise Elementary	Teacher, Title I Elem School	1.00
Tucker High	Teacher, Engineer & Tech. HS	1.00
Tucker High	Teacher, ESOL High School	1.00
Tucker High	Teacher, Interrelated	1.00
Tucker High	Teacher, Interrelated	1.00
Tucker High	Teacher, Science - HS	1.00
Tucker High	Teacher, Science - HS	1.00
Tucker High	Teacher, Spanish (HS)	1.00
Tucker High	Teacher, Title I Math HS	1.00
Tucker Middle School	Teacher, English Middle School	1.00
Tucker Middle School	Teacher, Math (MS)	1.00
Tucker Middle School	Teacher, Reading	1.00
Tucker Middle School	Teacher, Special Ed	1.00
Warren Technical	Teacher, Family & Consumer HS	1.00
District Total		56.50

Division of Human Resources

Teacher Postings

District 5

<u>LOCATION</u>	<u>JOB TITLE</u>	<u>PT-FT</u>
Arabia Mountain High School	Teacher, Engineer & Tech. HS	1.00
Arabia Mountain High School	Teacher, English - HS	1.00
Arabia Mountain High School	Teacher, History HS	1.00
Arabia Mountain High School	Teacher, Social Studies (HS)	1.00
Arabia Mountain High School	Teacher, Social Studies (HS)	1.00
Arabia Mountain High School	Teacher, Special Ed	1.00
Browns Mill Elem	Teacher, Art Elementary	1.00
Browns Mill Elem	Teacher, P/T Gifted	0.50
Canby Lane Elem	Teacher, Grade 1	1.00
Canby Lane Elem	Teacher, Grade 3	1.00
Canby Lane Elem	Teacher, Special Ed	1.00
Chapel Hill Elem	Teacher, Grade 1	1.00
Chapel Hill Middle	Teacher, Interrelated	1.00
Chapel Hill Middle	Teacher, Special Ed	1.00
E.L. Bouie, Sr. Elementary	Teacher, Grade 1	1.00
E.L. Bouie, Sr. Elementary	Teacher, Grade 5	1.00
E.L. Bouie, Sr. Elementary	Teacher, Interrelated	1.00
Fairington Elem	Teacher, Grade 2	1.00
Fairington Elem	Teacher, Interrelated	1.00
Fairington Elem	Teacher, Kindergarten	1.00
Fairington Elem	Teacher, Music	1.00
Flat Rock Elementary School	Teacher, Grade 1	1.00
Flat Rock Elementary School	Teacher, Grade 1	1.00
Flat Rock Elementary School	Teacher, Grade 3	1.00
Flat Rock Elementary School	Teacher, Reading Specialist	1.00
Flat Rock Elementary School	Teacher, Title I Elem School	1.00
Lithonia Middle School	Teacher, Dance Middle School	1.00
Lithonia Middle School	Teacher, English Middle School	1.00
Lithonia Middle School	Teacher, Math (MS)	1.00
Lithonia Middle School	Teacher, Music - Choral MS	1.00
Lithonia Middle School	Teacher, Music - Orchestra	1.00
Lithonia Middle School	Teacher, Social Studies (MS)	1.00
Martin Luther King, Jr. H.S.	Teacher, ESOL High School	1.00
Martin Luther King, Jr. H.S.	Teacher, Mathematics - HS	1.00
Martin Luther King, Jr. H.S.	Teacher, Science - HS	1.00
Miller Grove High	Teacher, English - HS	1.00
Miller Grove High	Teacher, Interrelated	1.00
Miller Grove High	Teacher, Interrelated	1.00
Murphey Candler Elem	Teacher, Grade 4	1.00
Murphey Candler Elem	Teacher, Kindergarten	1.00
Narvie J. Harris Elementary	Teacher, Grade 2	1.00
Narvie J. Harris Elementary	Teacher, Grade 3	1.00
Narvie J. Harris Elementary	Teacher, Grade 3	1.00

Division of Human Resources

Teacher Postings

District 5

<u>LOCATION</u>	<u>JOB TITLE</u>	<u>PT-FT</u>
Narvie J. Harris Elementary	Teacher, Grade 5	1.00
Salem Middle	Teacher, English Middle School	1.00
Salem Middle	Teacher, English Middle School	1.00
Salem Middle	Teacher, English Middle School	1.00
Salem Middle	Teacher, English Middle School	1.00
Salem Middle	Teacher, Interrelated	1.00
Salem Middle	Teacher, Reading - MS	1.00
Salem Middle	Teacher, Social Studies (MS)	1.00
Southwest DeKalb High School	ROTC, Navy Officer HS	1.00
Southwest DeKalb High School	Teacher, Art High School	1.00
Southwest DeKalb High School	Teacher, Mathematics - HS	1.00
Southwest DeKalb High School	Teacher, S/PID	1.00
Stoneview Elementary	Teacher, EIP Math	1.00
Stoneview Elementary	Teacher, Grade 2	1.00
Stoneview Elementary	Teacher, Grade 2	1.00
Stoneview Elementary	Teacher, Grade 3	1.00
Stoneview Elementary	Teacher, Grade 4	1.00
Stoneview Elementary	Teacher, Sp Ed Kindergarten	1.00
District Total		60.50

Division of Human Resources

Teacher Postings

District 6

<u>LOCATION</u>	<u>JOB TITLE</u>	<u>PT-FT</u>
Champion Theme Middle	Teacher, Science (MS)	1.00
DeKalb Alternative School	Teacher, ESOL High School	1.00
DeKalb Early College Academy	Teacher, ESOL	1.00
DeKalb Early College Academy	Teacher, P/T Interrelated	0.50
Eldridge Miller Elementary	Teacher, Grade 3	1.00
Eldridge Miller Elementary	Teacher, Grade 3	1.00
Eldridge Miller Elementary	Teacher, Grade 5 Math	1.00
Elizabeth Andrews High School	Teacher, Science - HS	1.00
Elizabeth Andrews High School	Teacher, Special Ed	1.00
Freedom Middle School	Teacher, English Middle School	1.00
Freedom Middle School	Teacher, Special Ed	1.00
Hambrick Elementary	Teacher, Special Ed	1.00
Idlewood Elementary	Teacher, Special Ed	1.00
Pine Ridge Elementary	Pre-K Teacher	1.00
Pine Ridge Elementary	Teacher, Grade 2	1.00
Pine Ridge Elementary	Teacher, Grade 5	1.00
Pine Ridge Elementary	Teacher, Preschool Special Ed.	1.00
Princeton Elementary School	Teacher, Grade 5 Lang. Arts	1.00
Redan Elementary	Pre-K Teacher	1.00
Redan Elementary	Teacher, Grade 2	1.00
Redan Elementary	Teacher, Grade 4	1.00
Redan Elementary	Teacher, Grade 4	1.00
Redan Elementary	Teacher, Grade 4	1.00
Rock Chapel Elementary	Teacher, ESOL	1.00
Rock Chapel Elementary	Teacher, Grade 1	1.00
Rock Chapel Elementary	Teacher, Kindergarten	1.00
Rockbridge Elementary	Teacher, ESOL	1.00
Stephenson High	ROTC, Navy Officer HS	1.00
Stephenson High	Teacher, Biology High School	1.00
Stephenson High	Teacher, ESOL - Part Time	0.50
Stephenson High	Teacher, Social Studies (HS)	1.00
Stephenson Middle	Teacher, Engineer & Tech. MS	1.00
Stephenson Middle	Teacher, Music - Choral MS	1.00
Stephenson Middle	Teacher, P/T Math	0.50
Stone Mill Elementary	Teacher, Grade 1	1.00
Stone Mill Elementary	Teacher, Music	1.00
Stone Mill Elementary	Teacher, Music - Strings PT	0.50
Stone Mountain Middle School	Teacher, Art Middle School	1.00
Stone Mountain Middle School	Teacher, English Middle School	1.00
Stone Mountain Middle School	Teacher, ESOL Middle School	1.00
Stone Mountain Middle School	Teacher, Grade 8 Math	1.00
Stone Mountain Middle School	Teacher, Intel. Disabilities	1.00
Stone Mountain Middle School	Teacher, Interrelated	1.00

Division of Human Resources

Teacher Postings

District 6

<u>LOCATION</u>	<u>JOB TITLE</u>	<u>PT-FT</u>
Stone Mountain Middle School	Teacher, Music - Choral MS	1.00
Stone Mountain Middle School	Teacher, Music - Orchestra	1.00
Stone Mountain Middle School	Teacher, Special Ed	1.00
Stone Mtn Elementary	Teacher, Art Elementary	1.00
Stone Mtn Elementary	Teacher, Grade 4	1.00
Stone Mtn Elementary	Teacher, Grade 4	1.00
Stone Mtn Elementary	Teacher, Grade 5	1.00
Stone Mtn Elementary	Teacher, Kindergarten	1.00
Stone Mtn Elementary	Teacher, Reading Specialist	1.00
Stone Mtn High	Teacher, Biology High School	1.00
Stone Mtn High	Teacher, Economics High Sch.	1.00
Stone Mtn High	Teacher, English - HS	1.00
Stone Mtn High	Teacher, English - HS	1.00
Stone Mtn High	Teacher, ESOL High School	1.00
Stone Mtn High	Teacher, Health & Physical Ed	1.00
Stone Mtn High	Teacher, Interrelated	1.00
Stone Mtn High	Teacher, Mathematics - HS	1.00
Stone Mtn High	Teacher, Title I Math PT	0.50
Wynbrooke Elementary	Teacher, Grade 1	1.00
District Total		59.50

Division of Human Resources

Teacher Postings

District 7

<u>LOCATION</u>	<u>JOB TITLE</u>	<u>PT-FT</u>
Allgood Elementary	Teacher, ESOL	1.00
Clarkston High	Teacher, Business Ed-Comp. HS	1.00
Clarkston High	Teacher, ESOL High School	1.00
Clarkston High	Teacher, Health & Physical Ed	1.00
Clarkston High	Teacher, Hearing Impaired	1.00
Clarkston High	Teacher, History HS	1.00
Clarkston High	Teacher, Mathematics - HS	1.00
Clarkston High	Teacher, Mathematics - HS	1.00
Clarkston High	Teacher, Science - HS	1.00
Clarkston High	Teacher, Spanish (HS)	1.00
Eagle Woods Academy	Teacher, Art Elementary	1.00
Eagle Woods Academy	Teacher, EBD	1.00
Eagle Woods Academy	Teacher, Spanish (HS)	1.00
Indian Creek Elem	P/T Music Teacher	0.50
Indian Creek Elem	Teacher, EIP Math	1.00
Indian Creek Elem	Teacher, Grade 1	1.00
Indian Creek Elem	Teacher, Grade 2	1.00
Indian Creek Elem	Teacher, Grade 3	1.00
Indian Creek Elem	Teacher, Music	1.00
Jolly Elementary	Teacher, Art Elementary	1.00
Jolly Elementary	Teacher, ESOL	1.00
Jolly Elementary	Teacher, Grade 4	1.00
Jolly Elementary	Teacher, Grade 5	1.00
Lithonia High	ROTC, Navy Officer HS	1.00
Lithonia High	Teacher, Business Ed-Comp. HS	1.00
Lithonia High	Teacher, English - HS	1.00
Lithonia High	Teacher, ESOL High School	1.00
Lithonia High	Teacher, Interrelated	1.00
Lithonia High	Teacher, Interrelated	1.00
Lithonia High	Teacher, Interrelated	1.00
Lithonia High	Teacher, Math	1.00
Lithonia High	Teacher, Mathematics - HS	1.00
Lithonia High	Teacher, Mathematics - HS	1.00
Lithonia High	Teacher, Mathematics - HS	1.00
Lithonia High	Teacher, Science - HS	1.00
Lithonia High	Teacher, Social Studies (HS)	1.00
Lithonia High	Teacher, Social Studies (HS)	1.00
M.M. Bethune Middle	Teacher, English Middle School	1.00
M.M. Bethune Middle	Teacher, Grade 6 Math	1.00
M.M. Bethune Middle	Teacher, Grade 8 Science	1.00
M.M. Bethune Middle	Teacher, Interrelated	1.00
M.M. Bethune Middle	Teacher, Science (MS)	1.00
M.M. Bethune Middle	Teacher, Special Ed	1.00

Division of Human Resources

Teacher Postings

District 7

<u>LOCATION</u>	<u>JOB TITLE</u>	<u>PT-FT</u>
Marbut Elementary	Teacher, Pre-K Certified	1.00
Miller Grove Middle	Teacher, English Middle School	1.00
Miller Grove Middle	Teacher, Interrelated	1.00
Miller Grove Middle	Teacher, Interrelated	1.00
Miller Grove Middle	Teacher, Science (MS)	1.00
Panola Way Elementary	Teacher, Grade 3	1.00
Panola Way Elementary	Teacher, Grade 5	1.00
Panola Way Elementary	Teacher, Grade 5	1.00
Panola Way Elementary	Teacher, Interrelated	1.00
Redan High	Teacher, English - HS	1.00
Redan High	Teacher, Math	1.00
Redan High	Teacher, MID/MoID	1.00
Rowland Elementary	Teacher, Gifted	1.00
Rowland Elementary	Teacher, Grade 4	1.00
Rowland Elementary	Teacher, Grade 4 Lang. Arts	1.00
Rowland Elementary	Teacher, Grade 5 Lang. Arts	1.00
Rowland Elementary	Teacher, Interrelated	1.00
Woodridge Elementary	Teacher, ESOL - Part Time	0.50
Woodridge Elementary	Teacher, Grade 1	1.00
Woodridge Elementary	Teacher, Grade 3	1.00
Woodridge Elementary	Teacher, Grade 5	1.00
Woodridge Elementary	Teacher, Special Ed	1.00
Woodridge Elementary	Teacher, Special Ed	1.00
District Total		65.00

Central Office

<u>LOCATION</u>	<u>JOB TITLE</u>	<u>PT-FT</u>
	Teacher, History HS	1.00
Exceptional Education Dept	Interrelated Teacher (INC Adults)	1.00
Exceptional Education Dept	Teacher, Hearing Impaired	1.00
Exceptional Education Dept	Teacher, Hospital Homebound	1.00
Exceptional Education Dept	Teacher, Occ. Therapist	1.00
Exceptional Education Dept	Teacher, Physical Therapy (NP)	1.00
Exceptional Education Dept	Teacher, PreSchool SpED	1.00
Exceptional Education Dept	Teacher, Visually Impaired	1.00
FLEX Academy of Excellence	Teacher, English - HS	1.00
District Total		9.00
Grand Total		389.50

DEKALB COUNTY SCHOOL DISTRICT STAFFING REPORT

NEW HIRES for JULY 8, 2024 BOARD MEETING

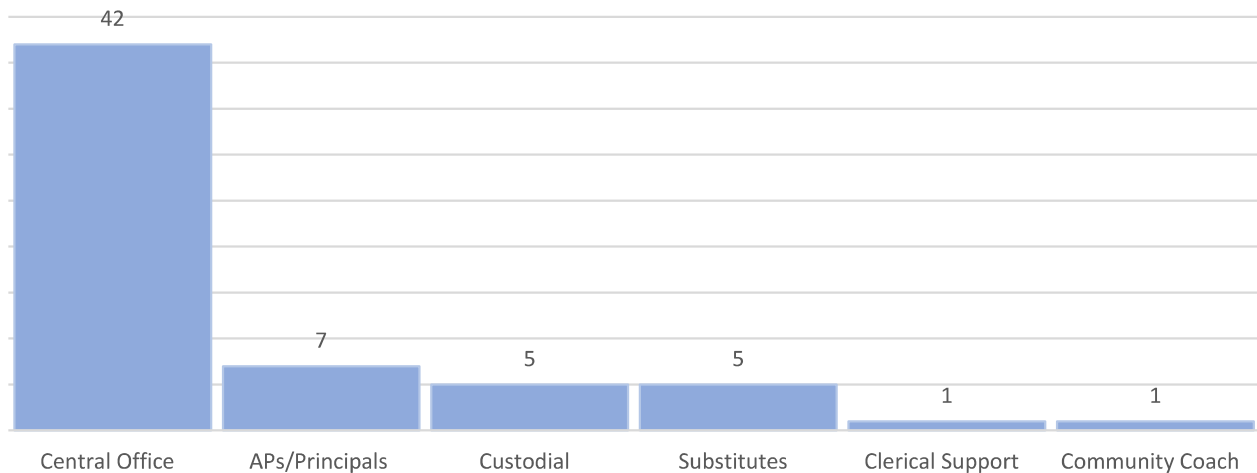
in accordance with Board Policy GA, Items 1 and 2

CATEGORY	TOTAL
Central Office	42
APs/Principals	7
Custodial	5
Substitutes	5
Clerical Support	1
Community Coach	1
TOTAL	61

DCSD NEW HIRES by BOARD DISTRICT			
DISTRICT	CERTIFIED	CLASSIFIED	TOTALS
1	0	0	0
2	1	0	1
3	2	0	2
4	0	1	1
5	1	0	1
6	3	2	5
7	0	2	2
DISTRICTWIDE	2	47	49
TOTAL	9	52	61

As of June 24, 2024, there are a total of **61** New Hires since the June 10, 2024 Board Meeting
9 Certified and **52** Classified

New Hires Processed for Board Reporting Period 7/8/2024
(5/31/2024-6/24/2024)



DEKALB COUNTY SCHOOL DISTRICT STAFFING REPORT

SEPARATIONS for JULY 8, 2024 BOARD MEETING

in accordance with Board Policy GA, Items 3 and 4

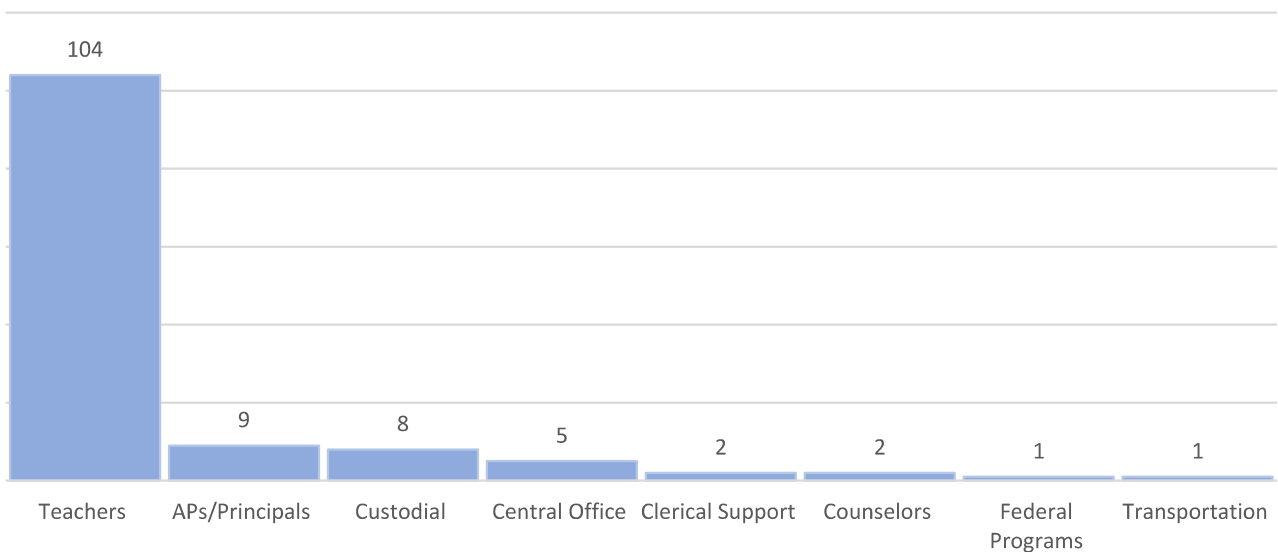
CATEGORY	TOTAL
Teachers	104
APs/Principals	9
Custodial	8
Central Office	5
Clerical Support	2
Counselors	2
Federal Programs	1
Transportation	1
TOTAL	132

DCSD SEPARATIONS by BOARD DISTRICT			
DISTRICT	CERTIFIED	CLASSIFIED	TOTALS
1	8	2	10
2	10	2	12
3	23	1	24
4	23	2	25
5	15	1	16
6	18	1	19
7	13	3	16
DISTRICTWIDE	8	2	10
TOTAL	118	14	132

As of June 24, 2024, there have been a total of **29** separations since the June 10, 2024 Board Meeting, consisting of **15** Certified and **14** Classified staff. Additionally, **104** teacher separations, with a separation date of May 23, 2024, have been added to this report, processed during this Board Reporting Period, bringing the total teacher separations to **511**. This includes **407** teacher separations from the previous reporting period and **104**, from this reporting period. The total separations reported for this period consist of **118** Certified and **14** Classified, bringing the total separations reported this period to **132**.

Separations Processed for Board Reporting Period 7/8/2024

(5/31/2024-6/24/2024)



DEKALB COUNTY SCHOOL DISTRICT STAFFING REPORT

SEPARATION REASONS SUMMARY

FOR JULY 8, 2024 BOARD MEETING

	SEPARATION REASONS	TOTAL	
	Contract not Accepted	49	
	Certification Problems	14	
	Another Position in GA Sys	12	
	Dismissal-Not Recommended	10	
	Personal Reasons	8	
	Retiring	8	
	Other	9	
	Lack of Growth Opportunity	4	
	Assignment Complete	3	
	Family Responsibilities	3	
	Moving	3	
	Transportation/Distance to Wrk	2	
	Family Resp-Fam Member Health	1	
	Job Promo-Sch Sys Outside GA	1	
	Lack Job Satisf-Culture/Clim	1	
	Lack of Leadership Support	1	
	Military Service	1	
	Professional Improvement	1	
	Spouse Transfer	1	
	TOTAL	132	