

THE DEKALB COUNTY BOARD OF EDUCATION
CONSTRUCTION CONTRACT CHANGE ORDER
 Evergreen Construction

Project Name: Tucker Middle School- HVAC & Controls Replacement
Project No.: 23-752-026
Change Order No.: 001R2
Date: 10/01/2024

Contractor: Evergreen Construction
 3200 Cobb Galleria Pkwy Ste. 240
 Atlanta Ga 30339 Phone: 678-244-6500
 (the "Contractor")

Project Description: HVAC & Controls Replacement
Reason for Change: Design Development, unforeseen conditions with existing facility, changes requested by DCSD

The Contract for the above-referenced Project is hereby amended to provide for the following described change(s) upon the terms set forth below:

Scope of Work (for this change): Reconcile all PCOs 1 to 15 & 17 to 21 (16 skipped)

<u>PCO#</u>	<u>DESCRIPTION</u>	<u>AMOUNT</u>
01	IOC-001 RFI #001 - HVAC and Electrical Coordination	\$11,545.00
02	IOC-002 RFI #002 - Heat Exchanger Automatic Backflush System	\$43,802.00
03	IOC-003 -RFI #003 - Controls Valves	\$26,883.00
04	SEE PCO -7 CE #4 - RFI #06 - Deduct not to Replace HVAC Ductwork and Water Piping (Pricing)	\$0.00
05	RFI #007 - Structural Steel Supports and Details for New ERU-1 and Cooling Tower (Pricing)	\$110,897.00
06	RFI #009 - Wall Rating Requirements (DD)	\$25,531.00
07	Existing Ceiling does not Reflect RCP Contract documents RFI# 5- Watchdog Alarm Deduct, RFI#6- Third Floor with Secondary Ceiling Above the visible ceiling, RFI#16 Relocating Sprinklers and other utilities for HVAC, Replacing Ceiling Tiles Allowance	(\$19,947.00)
08	RFI #012 - Existing Ductwork Does Not Match Mechanical Plans	\$17,445.00
09	HVAC in Storage converted Classrooms A124, A221, A224, A321, and A324 (DD)	\$0.00
10	RFI#010- Lighting Protection on HVAC Roof Equipment (Pricing)	\$9,903.00
11	RFI #015 - External Disconnects at HVAC Equipment (Pricing) (NOT REQUIRED PER RFI RESPONSE,SO, THIS PCO IS VOID)	\$0.00
12	SEE PCO 7- RFI #016 - Relocating Sprinklers and Other Utilities for HVAC Ductwork (T&M)	\$0.00
13	SEE PCO -7-- #13 - RFI #05 - HVAC "Watchdog alarm system deduct -	\$0.00
14	RFI-008: Rerouting Gas Piping on Roof	\$0.00
15	RFI-013: Exterior Wall Opening Reinforcement	\$7,756.00
17	RFI#017- Relocating Partial Main Ductwork from ERU-2	\$997.00
18	RFI #11 -Existing Exhaust Fan and Ductwork Do Not Match Mechanical Plans (DEDUCT)	\$0.00
19	RFI #18: Cooling Tower Pulse Pure Filter	\$0.00
20	Additional Fire Alarm items added by AHJ at Boiler Room	\$19,051.00
21	Relocation and Cleaning – School Demobilization and Remobilization	\$214,530.00

Total: \$468,393.00

Contract Amount:	Original Contract Price:	\$11,718,939.00
	Previous Change Orders ()	\$0.00
	Current Contract Price (with Change(s)):	\$11,718,939.00
	Amount of this Change Order:	\$468,393.00
	Revised Contract Price:	\$12,187,332.00

Contract Time:	Original Substantial Completion Date:	August 14, 2024
	Increase/(Decrease) in calendar days by previous Change Order(s):	0
	Increase/(Decrease) in calendar days by this Change Order:	0
	Revised Substantial Completion Date:	N/A

Attachments (Incorporated by Reference):

CLAIM IDENTIFICATION OR WAIVER

The Contractor has no claims arising out of or related to the Project for any (i) costs, expenses, profit, overhead, direct damages, consequential damages or increase in the Contract Price or (ii) delay or impact to the Contractor or the Project except as identified as follows:

and any and all claims that are not identified hereinabove by the Contractor are hereby waived by the Contractor.

Signatures are included on the following page.

As changed hereinabove, the Contract for the above-referenced Project shall continue in full force and effect.

Agreed to by the Contractor:



William F. McCorkle
Vice President – Evergreen Construction

10-10-24
Date


Recommended for Acceptance by Architect:



Olu Oshinubi
Architecture Department Manager – Epstein Group

10/10/2024
Date

Recommended for Acceptance by Program Director:



Donta Collins
DCSD Project Manager

10/11/24
Date



Richard Boyd
Director of Design & Construction

10/11/24
Date

Erick Hofstetter
Chief Operating Officer

Date

Approved by The DeKalb County Board of Education:

Dr. Devon Q. Horton
Superintendent

Date

Mr. Dijon DaCosta Sr.
Board Chair

Date

Board of Education Approval: (Required Over \$100,000)	Date: N/A	Item No.: N/A
---	------------------	----------------------



PCCO #001

Evergreen Construction
 3200 Cobb Galleria Parkway, Suite 240
 Atlanta, Georgia 30339
 Phone: 678 244 6500

Project: 2023-016 - Tucker Middle School
 2160 Idlewood Road
 Tucker, Georgia 30084

Prime Contract Change Order #001: Reconcile all PCO's 1 to 15 & 17 to 21 (PCO-16 skipped)

TO:	The DeKalb County Board of Education 1701 Mountain Industrial Blvd Stone Mountain, Georgia 30083	FROM:	Evergreen Construction 3200 Cobb Galleria Parkway, Suite 240 Atlanta, Georgia 30339
DATE CREATED:	6/13/2024	CREATED BY:	Jorge Orobitg (Evergreen Construction)
CONTRACT STATUS:	Pending - In Review	REVISION:	2
DESIGNATED REVIEWER:	Steve Hall (Evergreen Construction)	REVIEWED BY:	
DUE DATE:		REVIEW DATE:	
INVOICED DATE:		PAID DATE:	
SCHEDULE IMPACT:	0 days	EXECUTED:	No
REVISED SUBSTANTIAL COMPLETION DATE:		SIGNED CHANGE ORDER RECEIVED DATE:	
CONTRACT FOR:	2023-016:Tucker Middle School, HVAC and Controls Replacement	TOTAL AMOUNT:	\$468,393.00

DESCRIPTION:

Reconcile all PCO's (1 TO 15 AND 17 TO 21) (PCO-16 WAS SKIPPED)

Please refer to each PCO proposal for additional details regarding the scope of work included.

PCOS 4, 9, 11,12, 13, 14, 18, and 19 are voided or no-cost items

ATTACHMENTS:

[PCCO-001R- Procure Summary cover 10-1-2024.pdf](#), [Delkalb County - Change Order Form- PCCO-01R2 10-01-24 Revised.pdf](#), [PCO-05R1-RFI#-07-Structural-Steel-Supports-ERU-and-CT R.pdf](#), [PCO-021 Relocation and Cleaning -School Demobilization and Remobilization.pdf](#), [PCO-19.pdf](#), [PCO-18.pdf](#), [PCO-11-12-13-14.pdf](#), [PCO-9.pdf](#), [PCO-4.pdf](#), [PCO# -20 - Additional Fire Alarm at Boiler Room R.pdf](#), [PCO 7- Existing Ceiling not per RCP- RFI 5, RFI 6 and RFI16.pdf](#), [PCO 15 - RFI# - 13 Exterior Opening Reinforcement.pdf](#), [PCO-010- Lightning Protection on HVAC Roof Equipment Pkg.pdf](#), [PCO-08 RFI#-12 Duct work does not match Mech. Plans.pdf](#), [PCO-002 Tucker - IOC #002 - RFI #002 -Heat Ex- Final Package.pdf](#), [IOC -003 - RFI #003 Controls - Valves Proposal Final 062024.pdf](#), [PCO-6- RFI# 9- Wall Rating Requirements Pkg.pdf](#), [PCO 17- RFI#17- Relocating Partial Main Ductwork form ERU-2.pdf](#), [PCO-001 IOC-001 HVAC and ELEC. coordination Package 061724 Final.pdf](#)

POTENTIAL CHANGE ORDERS IN THIS CHANGE ORDER:

PCO #	Title	Schedule Impact	Amount
01	-IOC-001 RFI #001 - HVAC and Electrical Coordination	0 days	\$11,545.00
02	-IOC-002 RFI #002 - Heat Exchanger Automatic Backflush System	0 days	\$43,802.00
03	-IOC-003 -RFI #003 - Controls Valves	0 days	\$26,883.00
04	SEE PCO -7 CE #4 - RFI #06 - Deduct to not Replace HVAC Ductwork and Water Piping (Pricing)	0 days	\$0.00
05	RFI #007 - Structural Steel Supports and Details For New ERU-1 and Cooling Tower (Pricing)	0 days	\$110,897.00
06	RFI #009 - Wall Rating Requirements (DD)	0 days	\$25,531.00
07	Existing Ceiling does not Reflect RCP Contract documents: RFI# 5-Watchdog Alarm Deduct, RFI#6- 3rd Floor with Secondary Ceiling above visible ceiling, RFI#16 Relocating Sprinklers and other utilities for HVAC, Replacing Ceiling Tiles Allowance	0 days	(\$19,947.00)
08	RFI #012 - Existing Ductwork Does Not Match Mechanical Plans	0 days	\$17,445.00

09	HVAC in Storage converted Classrooms A124, A221, A224, A321, and A324 (DD)		\$0.00
10	RFI#010- Lighting Protection on HVAC Roof Equipment (Pricing)	0 days	\$9,903.00
11	RFI #015 - External Disconnects at HVAC Equipment (Pricing) NOT REQUIRED PER RFI RESPONSE SO THIS PCO IS VOID	0 days	\$0.00
12	SEE PCO 7- RFI #016 - Relocating Sprinklers and Other Utilities For HVAC Ductwork (T&M)	0 days	\$0.00
13	See PCO -7-- #13 - RFI #05 - HVAC "Watchdog alarm system- deduct -	0 days	\$0.00
14	RFI-008 : Rerouting Gas Piping on Roof	0 days	\$0.00
15	- RFI-013: Exterior Wall Opening Reinforcement	0 days	\$7,756.00
17	- RFI#017- Relocating Partial Main Ductwork from ERU-2	0 days	\$997.00
18	CE #18 - RFI #11 -Existing Exhaust Fan and Ductwork Do Not Match Mechanical Plans (DEDUCT)	0 days	\$0.00
19	RFI #18: Cooling Tower Pulse Pure Filter	0 days	\$0.00
20	Additional Fire Alarm items added by AHJ at Boiler Room	0 days	\$19,051.00
21	Relocation and Cleaning – School Demobilization and Remobilization	0 days	\$214,530.00
Total:			\$468,393.00

CHANGE ORDER LINE ITEMS:

PCO # 01: -IOC-001 RFI #001 - HVAC and Electrical Coordination

#	Budget Code	Description	Amount
1	16-99-100.S Electrical.Subcontract	--HVAC and Electrical Coordination	\$10,593.00
2	01-04-100.L Project Super./Mngmnt. Team.Labor	--Managerial Processing	\$95.00
3	01-04-130.L Project/Office Engineer.Labor	--As-built Drawings	\$29.00
Subtotal:			\$10,717.00
Payroll Taxes & Insurance (≈ 35.48% Applies to Labor.):			\$44.00
Subcontractor General Liability Insurance (≈ 0.35% Applies to Subcontract.):			\$37.00
Pollution Insurance (≈ 0.08% Applies to all line item types.):			\$9.00
Builders Risk Insurance.Materials (≈ 0.16% Applies to all line item types.):			\$17.00
Management Software (≈ 0.24% Applies to all line item types.):			\$26.00
Subcontractor Default Insurance (≈ 1.28% Applies to all line item types.):			\$137.00
Bond (0.00% Applies to all line item types.):			\$0.00
EVERGREEN Markup Self-Perform (≈ 9.99% Applies to Equipment, Materials, Labor, Other, and Labor Burden.):			\$17.00
EVERGREEN Markup Subcontract (5.00% Applies to Subcontract.):			\$541.00
Grand Total:			\$11,545.00

PCO # 02: -IOC-002 RFI #002 - Heat Exchanger Automatic Backflush System

#	Budget Code	Description	Amount
1	15-99-100.S H.V.A.C..Subcontract	RFI #002 - Heat Exchanger Automatic Backflush System	\$41,002.00
Subtotal:			\$41,002.00
Payroll Taxes & Insurance (35.32% Applies to Labor.):			\$0.00
Subcontractor General Liability Insurance (≈ 0.14% Applies to Subcontract.):			\$56.00
Pollution Insurance (≈ 0.09% Applies to all line item types.):			\$35.00
Builders Risk Insurance.Materials (≈ 0.16% Applies to all line item types.):			\$64.00
Management Software (0.00% Applies to all line item types.):			\$0.00
Subcontractor Default Insurance (≈ 1.29% Applies to all line item types.):			\$527.00
Bond (0.00% Applies to all line item types.):			\$0.00
EVERGREEN Markup Self-Perform (10.00% Applies to Equipment, Materials, Labor, Other, and Labor Burden.):			\$0.00
EVERGREEN Markup Subcontract (≈ 5.08% Applies to Subcontract.):			\$2,118.00
Grand Total:			\$43,802.00

PCO # 03 : -IOC-003 -RFI #003 - Controls Valves

#	Budget Code	Description	Amount
1	15-99-100.S H.V.A.C..Subcontract	Installation of Control Valves	\$0.00
2	15-99-200.S HVAC Controls.Subcontract	Furnish Control Valves per RFI #003	\$24,900.00
3	01-04-100.L Project Super./Mngmnt. Team.Labor	Managerial Processing	\$95.00
4	01-04-130.L Project/Office Engineer.Labor	As-builts Drawings	\$29.00
Subtotal:			\$25,024.00
Payroll Taxes & Insurance (≈ 35.48% Applies to Labor.):			\$44.00
Subcontractor General Liability Insurance (≈ 0.35% Applies to Subcontract.):			\$86.00
Pollution Insurance (≈ 0.08% Applies to all line item types.):			\$21.00
Builders Risk Insurance.Materials (≈ 0.16% Applies to all line item types.):			\$39.00
Management Software (≈ 0.24% Applies to all line item types.):			\$60.00
Subcontractor Default Insurance (≈ 1.28% Applies to all line item types.):			\$321.00
Bond (0.00% Applies to all line item types.):			\$0.00
EVERGREEN Markup Self-Perform (≈ 9.99% Applies to Equipment, Materials, Labor, Other, and Labor Burden.):			\$17.00
EVERGREEN Markup Subcontract (5.00% Applies to Subcontract.):			\$1,271.00
Grand Total:			\$26,883.00

PCO # 04: SEE PCO -7 CE #4 - RFI #06 - Deduct to not Replace HVAC Ductwork and Water Piping (Pricing)

#	Budget Code	Description	Amount	Payroll Taxes & Insurance (35.32% Applies to Labor and Labor Burden.)	Subtotal
1	30-10-100.S Contractor's Fee.Subcontract	RFI #06 - Deduct to not Replace HVAC Ductwork and Water Piping (Pricing)	\$0.00	\$0.00	\$0.00
Subtotal:			\$0.00	\$0.00	\$0.00
Subcontractor General Liability Insurance (0.34% Applies to all line item types.):					\$0.00
Pollution Insurance (≈ 0.09% Applies to all line item types.):					\$0.00
Builders Risk Insurance.Materials (≈ 0.16% Applies to all line item types.):					\$0.00
Management Software (0.24% Applies to all line item types.):					\$0.00
Subcontractor Default Insurance (1.28% Applies to all line item types.):					\$0.00
EVERGREEN Markup Subcontract (5.00% Applies to Subcontract.):					\$0.00
EVERGREEN Markup Self-Perform (10.00% Applies to Equipment, Materials, Labor, Other, and Labor Burden.):					\$0.00
Bond (0.50% Applies to all line item types.):					\$0.00
Grand Total:					\$0.00

PCO # 05: RFI #007 - Structural Steel Supports and Details For New ERU-1 and Cooling Tower (Pricing)

#	Budget Code	Description	Amount	Payroll Taxes & Insurance (35.32% Applies to Labor.)	Subtotal
1	01-04-100.L Project Super./Mngmnt. Team.Labor	Managerial Processing	\$285.00	\$100.66	\$385.66
2	01-04-130.L Project/Office Engineer.Labor	Quality Control/Coordination	\$85.50	\$30.20	\$115.70
3	01-99-100.E Equipment Rental.Equipment	Low Rental - to remove Satellite	\$1,580.00	\$0.00	\$1,580.00
4	02-01-100.S Selective Demolition.Subcontract	RFI #007 - Structural Steel Supports and Details For New ERU-1 and Cooling Tower (Pricing)	\$0.00	\$0.00	\$0.00
5	05-01-100.S Structural Steel.Subcontract	RFI #007 - Structural Steel Supports and Details For New ERU-1 and Cooling Tower (Pricing)	\$28,000.00	\$0.00	\$28,000.00
6	09-25-100.S Drywall & Acoustical	RFI #007 - Structural Steel Supports and Details For New ERU-1 and Cooling Tower (Pricing)	\$0.00	\$0.00	\$0.00
7	15-49-100.S Plumbing.Subcontract	RFI #007 - Structural Steel Supports and Details For New ERU-1 and Cooling Tower (Pricing)	\$0.00	\$0.00	\$0.00
8	15-99-100.S H.V.A.C..Subcontract	RFI #007 - Structural Steel Supports and Details For New ERU-1 and Cooling Tower (Pricing)	\$36,722.95	\$0.00	\$36,722.95
9	15-99-200.S HVAC Controls.Subcontract	RFI #007 - Structural Steel Supports and Details For New ERU-1 and Cooling Tower (Pricing)	\$0.00	\$0.00	\$0.00
10	18-50-005.S Structural Dtls ERU-1 and CT Support	RFI #007--Roofing Repairs by Zurix	\$6,310.00	\$0.00	\$6,310.00

#	Budget Code	Description	Amount	Payroll Taxes & Insurance (35.32% Applies to Labor.)	Subtotal
11	18-50-005.S Structural Dtls ERU-1 and CT Support	RFI #007 - Structural Steel Supports and Details For New ERU-1 and Cooling Tower - Summers Roofing System	\$29,720.61	\$0.00	\$29,720.61
Subtotal:			\$102,704.06	\$130.86	\$102,834.92
Subcontractor General Liability Insurance (0.34% Applies to Subcontract.):					\$342.56
Pollution Insurance (≈ 0.09% Applies to all line item types.):					\$88.03
Builders Risk Insurance.Materials (≈ 0.16% Applies to all line item types.):					\$161.45
Management Software (0.24% Applies to all line item types.):					\$246.80
Subcontractor Default Insurance (1.28% Applies to all line item types.):					\$1,316.29
EVERGREEN Markup Subcontract (5.00% Applies to Subcontract.):					\$5,143.57
EVERGREEN Markup Self-Perform (10.00% Applies to Equipment, Materials, Labor, Other, and Labor Burden.):					\$211.82
Bond (≈ 0.5% Applies to all line item types.):					\$551.56
Grand Total:					\$110,897.00

PCO # 06: RFI #009 - Wall Rating Requirements (DD)

#	Budget Code	Description	Amount	Payroll Taxes & Insurance (35.32% Applies to Labor.)	Subtotal
1	09-25-100.S Drywall & Acoustical	Wall Rating Requirements (DD)	\$1,818.68	\$0.00	\$1,818.68
2	15-99-100.S H.V.A.C..Subcontract	Wall Rating Requirements (DD)	\$21,528.00	\$0.00	\$21,528.00
3	01-04-130.L Project/Office Engineer.Labor	Quality Control 2hrs @\$28.50=\$57	\$57.00	\$20.13	\$77.13
4	01-04-100.L Project Super./Mngmnt. Team.Labor	Managerial Processing 2 hrs @\$95=\$190.00)	\$190.00	\$67.11	\$257.11
Subtotal:			\$23,593.68	\$87.24	\$23,680.92
Subcontractor General Liability Insurance (0.34% Applies to Subcontract.):					\$79.38
Pollution Insurance (≈ 0.09% Applies to all line item types.):					\$20.27
Builders Risk Insurance.Materials (≈ 0.16% Applies to all line item types.):					\$37.18
Management Software (0.24% Applies to all line item types.):					\$56.83
Subcontractor Default Insurance (1.28% Applies to all line item types.):					\$303.12
EVERGREEN Markup Subcontract (5.00% Applies to Subcontract.):					\$1,191.88
EVERGREEN Markup Self-Perform (10.00% Applies to Equipment, Materials, Labor, Other, and Labor Burden.):					\$34.01
Bond (≈ 0.5% Applies to all line item types.):					\$127.41
Grand Total:					\$25,531.00

PCO # 07: Existing Ceiling does not Reflect RCP Contract documents: RFI# 5-Watchdog Alarm Deduct, RFI#6- 3rd Floor with Secondary Ceiling above visible ceiling, RFI#16 Relocating Sprinklers and other utilities for HVAC, Replacing Ceiling Tiles Allowance

#	Budget Code	Description	Amount	Payroll Taxes & Insurance (35.32% Applies to Labor and Labor Burden.)	Subtotal
1	15-99-100.S H.V.A.C..Subcontract	A) Deduct Watchdog Alarm System	\$(51,620.16)	\$0.00	\$(51,620.16)
2	15-99-100.S H.V.A.C..Subcontract	B) Credit for Not Replacing Water Piping Per RFI-06	\$(200,000.00)	\$0.00	\$(200,000.00)

#	Budget Code	Description	Amount	Payroll Taxes & Insurance (35.32% Applies to Labor and Labor Burden.)	Subtotal
3	09-25-100.S Drywall & Acoustical	C) Existing Ceilings does not Reflect Architectural RCPs (T&M)	\$164,500.00	\$0.00	\$164,500.00
4	16-99-100.S Electrical.Subcontract	D) RFI#16- Relocating Sprinklers and other utilities for HVAC - Relocate conduit boxes for new HVAC & Repair Duct Detectors	\$37,255.65	\$0.00	\$37,255.65
5	18-50-021.S PCO021-Extra Wrk-Demo&Remob.Subcontract	D) RFI#16- Relocating Sprinklers and other utilities for HVAC- Relocation of Sprinklers conflict with HVAC	\$23,659.25	\$0.00	\$23,659.25
6	09-25-100.S Drywall & Acoustical	E) Replacing Damage Ceiling Tiles (Allowance)	\$6,990.91	\$0.00	\$6,990.91
7	01-04-100.L Project Super./Mngmnt. Team.Labor	Managerial Processing (4Hours@\$95=\$380.00)	\$380.00	\$134.22	\$514.22
8	01-04-130.L Project/Office Engineer.Labor	Quality Control (4 Hours @\$28.50=\$114.00)	\$114.00	\$40.26	\$154.26
Subtotal:			\$(18,720.35)	\$174.48	\$(18,545.87)
Subcontractor General Liability Insurance (0.34% Applies to all line item types.):					\$(63.06)
Pollution Insurance (≈ 0.09% Applies to all line item types.):					\$(15.88)
Builders Risk Insurance.Materials (≈ 0.16% Applies to all line item types.):					\$(29.12)
Management Software (0.24% Applies to all line item types.):					\$(44.51)
Subcontractor Default Insurance (1.28% Applies to all line item types.):					\$(237.39)
EVERGREEN Markup Subcontract (5.00% Applies to Subcontract.):					\$(980.92)
EVERGREEN Markup Self-Perform (10.00% Applies to Equipment, Materials, Labor, Other, and Labor Burden.):					\$68.25
Bond (≈ 0.5% Applies to all line item types.):					\$(98.50)
Grand Total:					\$(19,947.00)

PCO # 08: RFI #012 - Existing Ductwork Does Not Match Mechanical Plans

#	Budget Code	Description	Amount	Payroll Taxes & Insurance (35.32% Applies to Labor.)	Subtotal
1	15-99-100.S H.V.A.C..Subcontract	RFI -12 - 10 in run for EF duct insulation	\$15,842.17	\$0.00	\$15,842.17
2	01-04-100.L Project Super./Mngmnt. Team.Labor	Managerial Processing (2Hrs @\$95= \$190.00)	\$190.00	\$67.11	\$257.11
3	01-04-130.L Project/Office Engineer.Labor	Quality Control (2Hrs@\$28.5= \$57.00)	\$57.00	\$20.13	\$77.13
Subtotal:			\$16,089.17	\$87.24	\$16,176.41
Subcontractor General Liability Insurance (0.34% Applies to Subcontract.):					\$53.86
Pollution Insurance (≈ 0.09% Applies to all line item types.):					\$13.85
Builders Risk Insurance.Materials (≈ 0.16% Applies to all line item types.):					\$25.40
Management Software (0.24% Applies to all line item types.):					\$38.82
Subcontractor Default Insurance (1.28% Applies to all line item types.):					\$207.06
EVERGREEN Markup Subcontract (5.00% Applies to Subcontract.):					\$808.76
EVERGREEN Markup Self-Perform (≈ 10.01% Applies to Equipment, Materials, Labor, Other, and Labor Burden.):					\$34.05
Bond (0.50% Applies to all line item types.):					\$86.79
Grand Total:					\$17,445.00

PCO # 09: HVAC in Storage converted Classrooms A124, A221, A224, A321, and A324 (DD)

#	Budget Code	Description	Amount
1	15-99-100.S H.V.A.C..Subcontract	HVAC in Storage converted Classrooms A124, A221, A224, A321, and A324	\$0.00
Subtotal:			\$0.00
Payroll Taxes & Insurance (35.32% Applies to Labor.):			\$0.00
Subcontractor General Liability Insurance (0.34% Applies to Subcontract.):			\$0.00
Pollution Insurance (≈ 0.09% Applies to all line item types.):			\$0.00
Builders Risk Insurance.Materials (≈ 0.16% Applies to all line item types.):			\$0.00
Management Software (0.24% Applies to all line item types.):			\$0.00
Subcontractor Default Insurance (1.28% Applies to all line item types.):			\$0.00
Bond (0.50% Applies to all line item types.):			\$0.00
EVERGREEN Markup Self-Perform (10.00% Applies to Equipment, Materials, Labor, Other, and Labor Burden.):			\$0.00
EVERGREEN Markup Subcontract (5.00% Applies to Subcontract.):			\$0.00
Grand Total:			\$0.00

PCO # 10: RFI#010- Lighting Protection on HVAC Roof Equipment (Pricing)

#	Budget Code	Description	Amount	Payroll Taxes & Insurance (35.32% Applies to Labor.)	Subtotal
1	16-99-100.S Electrical.Subcontract	--RFI#010- Lightning Protection on HVAC Roof Equipment	\$8,842.68	\$0.00	\$8,842.68
2	01-04-100.L Project Super./Mngmnt. Team.Labor	Managerial Processing	\$190.00	\$67.11	\$257.11
3	01-04-130.L Project/Office Engineer.Labor	Quality Control	\$57.00	\$20.13	\$77.13
Subtotal:			\$9,089.68	\$87.24	\$9,176.92
Subcontractor General Liability Insurance (0.34% Applies to Subcontract.):					\$30.07
Pollution Insurance (≈ 0.09% Applies to all line item types.):					\$7.86
Builders Risk Insurance.Materials (≈ 0.16% Applies to all line item types.):					\$14.41
Management Software (0.24% Applies to all line item types.):					\$22.02
Subcontractor Default Insurance (1.28% Applies to all line item types.):					\$117.46
EVERGREEN Markup Subcontract (5.00% Applies to Subcontract.):					\$451.43
EVERGREEN Markup Self-Perform (10.00% Applies to Equipment, Materials, Labor, Other, and Labor Burden.):					\$34.01
Bond (≈ 0.5% Applies to all line item types.):					\$48.82
Grand Total:					\$9,903.00

PCO # 11: RFI #015 - External Disconnects at HVAC Equipment (Pricing) NOT REQUIRED PER RFI RESPONSE SO THIS PCO IS VOID

#	Budget Code	Description	Amount
1	15-99-100.S H.V.A.C..Subcontract	NOT REQUIRED PER RFI RESPONSE SO THIS PCO IS VOID	\$0.00
Subtotal:			\$0.00
Payroll Taxes & Insurance (35.32% Applies to Labor.):			\$0.00
Subcontractor General Liability Insurance (0.34% Applies to Subcontract.):			\$0.00
Pollution Insurance (≈ 0.09% Applies to all line item types.):			\$0.00
Builders Risk Insurance.Materials (≈ 0.16% Applies to all line item types.):			\$0.00
Management Software (0.24% Applies to all line item types.):			\$0.00
Subcontractor Default Insurance (1.28% Applies to all line item types.):			\$0.00
Bond (0.50% Applies to all line item types.):			\$0.00
EVERGREEN Markup Self-Perform (10.00% Applies to Equipment, Materials, Labor, Other, and Labor Burden.):			\$0.00
EVERGREEN Markup Subcontract (5.00% Applies to Subcontract.):			\$0.00
Grand Total:			\$0.00

PCO # 12 : SEE PCO 7- RFI #016 - Relocating Sprinklers and Other Utilities For HVAC Ductwork (T&M)

#	Budget Code	Description	Amount
1	15-49-100.S Plumbing.Subcontract	RFI #016 - Relocating Sprinklers and Other Utilities For HVAC Ductwork	\$0.00
Subtotal:			\$0.00
Payroll Taxes & Insurance (35.32% Applies to Labor.):			\$0.00
Subcontractor General Liability Insurance (0.34% Applies to Subcontract.):			\$0.00
Pollution Insurance (≈ 0.09% Applies to all line item types.):			\$0.00
Builders Risk Insurance.Materials (≈ 0.16% Applies to all line item types.):			\$0.00
Management Software (0.24% Applies to all line item types.):			\$0.00
Subcontractor Default Insurance (1.28% Applies to all line item types.):			\$0.00
Bond (0.50% Applies to all line item types.):			\$0.00
EVERGREEN Markup Self-Perform (10.00% Applies to Equipment, Materials, Labor, Other, and Labor Burden.):			\$0.00
EVERGREEN Markup Subcontract (5.00% Applies to Subcontract.):			\$0.00
Grand Total:			\$0.00

PCO # 13: See PCO -7-- #13 - RFI #05 - HVAC "Watchdog alarm system- deduct -

#	Budget Code	Description	Amount	Payroll Taxes & Insurance (35.32% Applies to Labor and Labor Burden.)	Subtotal
1	15-99-100.S H.V.A.C..Subcontract	#5: HVAC "Watchdog" Alarm System -Deduct	\$0.00	\$0.00	\$0.00
Subtotal:			\$0.00	\$0.00	\$0.00
Subcontractor General Liability Insurance (0.34% Applies to all line item types.):					\$0.00
Pollution Insurance (≈ 0.09% Applies to all line item types.):					\$0.00
Builders Risk Insurance.Materials (≈ 0.16% Applies to all line item types.):					\$0.00
Management Software (0.24% Applies to all line item types.):					\$0.00
Subcontractor Default Insurance (1.28% Applies to all line item types.):					\$0.00
EVERGREEN Markup Subcontract (5.00% Applies to Subcontract.):					\$0.00
EVERGREEN Markup Self-Perform (10.00% Applies to Equipment, Materials, Labor, Other, and Labor Burden.):					\$0.00
Bond (0.50% Applies to all line item types.):					\$0.00
Grand Total:					\$0.00

PCO # 14: RFI-008 : Rerouting Gas Piping on Roof

#	Budget Code	Description	Amount
1	15-49-100.S Plumbing.Subcontract	#8: Rerouting Gas Piping on Roof	\$0.00
Subtotal:			\$0.00
Payroll Taxes & Insurance (35.32% Applies to Labor.):			\$0.00
Subcontractor General Liability Insurance (0.34% Applies to Subcontract.):			\$0.00
Pollution Insurance (≈ 0.09% Applies to all line item types.):			\$0.00
Builders Risk Insurance.Materials (≈ 0.16% Applies to all line item types.):			\$0.00
Management Software (0.24% Applies to all line item types.):			\$0.00
Subcontractor Default Insurance (1.28% Applies to all line item types.):			\$0.00
Bond (0.50% Applies to all line item types.):			\$0.00
EVERGREEN Markup Self-Perform (10.00% Applies to Equipment, Materials, Labor, Other, and Labor Burden.):			\$0.00
EVERGREEN Markup Subcontract (5.00% Applies to Subcontract.):			\$0.00
Grand Total:			\$0.00

PCO # 15: - RFI-013: Exterior Wall Opening Reinforcement

#	Budget Code	Description	Amount	Payroll Taxes & Insurance (35.32% Applies to Labor.)	Subtotal
1	18-50-005.S Structural Dtls ERU-1 and CT Support	RFI #13 - Exterior Wall Opening Reinforcement	\$6,850.00	\$0.00	\$6,850.00
2	01-04-100.L Project Super./Mngmnt. Team.Labor	Managerial Processing 2 Hrs @\$95=\$190.00	\$190.00	\$67.11	\$257.11
3	01-04-130.L Project/Office Engineer.Labor	Quality Control 2 Hrs @\$28.5=\$57.00	\$57.00	\$20.13	\$77.13
Subtotal:			\$7,097.00	\$87.24	\$7,184.24
Subcontractor General Liability Insurance (0.34% Applies to Subcontract.):					\$23.29
Pollution Insurance (≈ 0.09% Applies to all line item types.):					\$6.15
Builders Risk Insurance.Materials (≈ 0.16% Applies to all line item types.):					\$11.28
Management Software (0.24% Applies to all line item types.):					\$17.24
Subcontractor Default Insurance (1.28% Applies to all line item types.):					\$91.96
EVERGREEN Markup Subcontract (5.00% Applies to Subcontract.):					\$349.70
EVERGREEN Markup Self-Perform (10.00% Applies to Equipment, Materials, Labor, Other, and Labor Burden.):					\$34.01
Bond (≈ 0.49% Applies to all line item types.):					\$38.13
Grand Total:					\$7,756.00

PCO # 17: - RFI#017- Relocating Partial Main Ductwork from ERU-2

#	Budget Code	Description	Amount
1	09-25-100.S Drywall & Acoustical	RFI#017- Relocating Partial Main Ductwork from ERU-2	\$792.00

#	Budget Code	Description	Amount
2	01-04-100.L Project Super./Mngmnt. Team.Labor	Managerial Processing 1Hr@\$95.00	\$95.00
Subtotal:			\$887.00
Payroll Taxes & Insurance (35.32% Applies to Labor.):			\$33.55
Subcontractor General Liability Insurance (0.34% Applies to Subcontract.):			\$2.69
Pollution Insurance (≈ 0.09% Applies to all line item types.):			\$0.76
Builders Risk Insurance.Materials (≈ 0.16% Applies to all line item types.):			\$1.39
Management Software (0.24% Applies to all line item types.):			\$2.13
Subcontractor Default Insurance (1.28% Applies to all line item types.):			\$11.35
Bond (0.50% Applies to all line item types.):			\$4.69
EVERGREEN Markup Self-Perform (10.00% Applies to Equipment, Materials, Labor, Other, and Labor Burden.):			\$13.09
EVERGREEN Markup Subcontract (≈ 4.96% Applies to Subcontract.):			\$40.35
Grand Total:			\$997.00

PCO # 18: CE #18 - RFI #11 -Existing Exhaust Fan and Ductwork Do Not Match Mechanical Plans (DEDUCT)

#	Budget Code	Description	Amount	Payroll Taxes & Insurance (35.32% Applies to Labor and Labor Burden.)	Subtotal
1	15-99-100.S H.V.A.C..Subcontract	RFI-11-Existing Exhaust Fan and Ductwork Do Not Match Mechanical Plans (DEDUCT)	\$0.00	\$0.00	\$0.00
2	15-99-200.S HVAC Controls.Subcontract	RFI-11-Existing Exhaust Fan and Ductwork Do Not Match Mechanical Plans (DEDUCT)	\$0.00	\$0.00	\$0.00
3	16-99-100.S Electrical.Subcontract	RFI-11-Existing Exhaust Fan and Ductwork Do Not Match Mechanical Plans (DEDUCT)	\$0.00	\$0.00	\$0.00
Subtotal:			\$0.00	\$0.00	\$0.00
Subcontractor General Liability Insurance (0.34% Applies to all line item types.):			\$0.00		
Pollution Insurance (≈ 0.09% Applies to all line item types.):			\$0.00		
Builders Risk Insurance.Materials (≈ 0.16% Applies to all line item types.):			\$0.00		
Management Software (0.24% Applies to all line item types.):			\$0.00		
Subcontractor Default Insurance (1.28% Applies to all line item types.):			\$0.00		
EVERGREEN Markup Subcontract (5.00% Applies to Subcontract.):			\$0.00		
EVERGREEN Markup Self-Perform (10.00% Applies to Equipment, Materials, Labor, Other, and Labor Burden.):			\$0.00		
Bond (0.50% Applies to all line item types.):			\$0.00		
Grand Total:			\$0.00		

PCO # 19: RFI #18: Cooling Tower Pulse Pure Filter

#	Budget Code	Description	Amount	Payroll Taxes & Insurance (35.32% Applies to Labor and Labor Burden.)	Subtotal
1	15-99-100.S H.V.A.C..Subcontract	#18: Cooling Tower Pulse Pure Filter	\$0.00	\$0.00	\$0.00
Subtotal:			\$0.00	\$0.00	\$0.00
Subcontractor General Liability Insurance (0.34% Applies to all line item types.):					\$0.00
Pollution Insurance (≈ 0.09% Applies to all line item types.):					\$0.00
Builders Risk Insurance.Materials (≈ 0.16% Applies to all line item types.):					\$0.00
Management Software (0.24% Applies to all line item types.):					\$0.00
Subcontractor Default Insurance (1.28% Applies to all line item types.):					\$0.00
EVERGREEN Markup Subcontract (5.00% Applies to Subcontract.):					\$0.00
EVERGREEN Markup Self-Perform (10.00% Applies to Equipment, Materials, Labor, Other, and Labor Burden.):					\$0.00
Bond (0.50% Applies to all line item types.):					\$0.00
Grand Total:					\$0.00

PCO # 20: Additional Fire Alarm items added by AHJ at Boiler Room

#	Budget Code	Description	Amount	Payroll Taxes & Insurance (35.32% Applies to Labor and Labor Burden.)	Subtotal
1	16-99-100.S Electrical.Subcontract	Revision 3 (Convert Storage Rooms 121, 221, 321 into Classrooms)	\$17,331.95	\$0.00	\$17,331.95
2	01-04-100.L Project Super./Mngmnt. Team.Labor	Managerial Processing 2hrs@\$95=\$190.00	\$190.00	\$67.11	\$257.11
3	01-04-130.L Project/Office Engineer.Labor	--Quality Control 2hrs@\$28.50=\$57.00	\$57.00	\$20.13	\$77.13
Subtotal:			\$17,578.95	\$87.24	\$17,666.19
Subcontractor General Liability Insurance (0.34% Applies to all line item types.):					\$60.07
Pollution Insurance (≈ 0.09% Applies to all line item types.):					\$15.12
Builders Risk Insurance.Materials (≈ 0.16% Applies to all line item types.):					\$27.74
Management Software (0.24% Applies to all line item types.):					\$42.40
Subcontractor Default Insurance (1.28% Applies to all line item types.):					\$226.13
EVERGREEN Markup Subcontract (5.00% Applies to Subcontract.):					\$884.82
EVERGREEN Markup Self-Perform (10.00% Applies to Equipment, Materials, Labor, Other, and Labor Burden.):					\$34.13
Bond (≈ 0.5% Applies to all line item types.):					\$94.40
Grand Total:					\$19,051.00

PCO # 21: Relocation and Cleaning – School Demobilization and Remobilization

#	Budget Code	Description	Amount	Payroll Taxes & Insurance (35.32% Applies to Labor and Labor Burden.)	Subtotal
1	01-04-100.L Project Super./Mngmnt. Team.Labor	Managerial Processing (20@\$95-\$1900)	\$1,900.00	\$671.08	\$2,571.08
2	01-04-130.L Project/Office Engineer.Labor	Quality Control (15@\$28.50= \$427.50)	\$427.50	\$150.99	\$578.49
3	18-50-021.S PCO021-Extra Wrk-Demo&Remob.Subcontract	Cleanstar National Inc. -Final waxing of the floors for school opening	\$88,975.00	\$0.00	\$88,975.00
4	18-50-021.S PCO021-Extra Wrk-Demo&Remob.Subcontract	Precision Management -Labor for relocating and protecting Owner FFE items during construction	\$74,554.00	\$0.00	\$74,554.00
5	18-50-021.S PCO021-Extra Wrk-Demo&Remob.Subcontract	Tellus Logistics US- Dumpsters furnished to faculty for move-out and Move-in	\$2,545.00	\$0.00	\$2,545.00
6	18-50-021.S PCO021-Extra Wrk-Demo&Remob.Subcontract	Virtucom- Removal, storage, and reinstallation of the smart boards during construction	\$15,232.00	\$0.00	\$15,232.00
7	18-50-021.S PCO021-Extra Wrk-Demo&Remob.Subcontract	WhiteCap - Visqueen to move out and protect personal belongings left in school	\$3,327.75	\$0.00	\$3,327.75
8	18-50-021.S PCO021-Extra Wrk-Demo&Remob.Subcontract	Small Tools used during moving out/moving in assistance	\$1,046.35	\$0.00	\$1,046.35
9	18-50-021.S PCO021-Extra Wrk-Demo&Remob.Subcontract	Flood Brothers- Removal, Storage , and reinstallation of owner FFE items such as computers during construction	\$6,042.20	\$0.00	\$6,042.20
10	18-50-021.S PCO021-Extra Wrk-Demo&Remob.Subcontract	Flood Brothers- Relocate Boxed IT Equipment Internally	\$4,090.00	\$0.00	\$4,090.00
Subtotal:			\$198,139.80	\$822.07	\$198,961.87
Subcontractor General Liability Insurance (0.34% Applies to all line item types.):					\$676.47
Pollution Insurance (≈ 0.09% Applies to all line item types.):					\$170.31
Builders Risk Insurance.Materials (≈ 0.16% Applies to all line item types.):					\$312.37
Management Software (0.24% Applies to all line item types.):					\$477.51
Subcontractor Default Insurance (1.28% Applies to all line item types.):					\$2,546.71
EVERGREEN Markup Subcontract (5.00% Applies to Subcontract.):					\$9,996.47
EVERGREEN Markup Self-Perform (≈ 9.98% Applies to Equipment, Materials, Labor, Other, and Labor Burden.):					\$321.00
Bond (≈ 0.5% Applies to all line item types.):					\$1,067.29
Grand Total:					\$214,530.00

The original (Contract Sum)	\$11,718,939.00
Net change by previously authorized Change Orders	\$0.00
The contract sum prior to this Change Order was	\$11,718,939.00
The contract sum would be changed by this Change Order in the amount of	\$468,393.00
The new contract sum including this Change Order will be	\$12,187,332.00
The contract time will not be changed by this Change Order.	

Neal Ridgel (Epsten Group)
 101 Marietta Street NW Suite 2600
 Georgia 30303

The DeKalb County Board of Education
 1701 Mountain Industrial Blvd
 Stone Mountain, Georgia 30083

Evergreen Construction
 3200 Cobb Galleria Parkway, Suite 240
 Atlanta, Georgia 30339

SIGNATURE _____ DATE _____ SIGNATURE _____ DATE _____ SIGNATURE _____ DATE _____

Evergreen Construction
 3200 Cobb Galleria Parkway, Suite 240
 Atlanta, Georgia 30339
 Phone: 678 244 6500

Project: 2023-016 - Tucker Middle School
 2160 Idlewood Road
 Tucker, Georgia 30084

Prime Contract Potential Change Order #IOC-001: RFI #001 - HVAC and Electrical Coordination

TO:	The DeKalb County Board of Education 1701 Mountain Industrial Blvd Stone Mountain, Georgia 30083	FROM:	Evergreen Construction 3200 Cobb Galleria Parkway, Suite 240 Atlanta, Georgia 30339
PCO NUMBER/REVISION:	IOC-001 / 0	CONTRACT:	2023-016 - Tucker Middle School, HVAC and Controls Replacement
REQUEST RECEIVED FROM:		CREATED BY:	Jorge Orobitg (Evergreen Construction)
STATUS:	Pending - In Review	CREATED DATE:	6/12/2024
REFERENCE:	236514.16 Closed Circuit Cooling Tower, 233813 Commercial Kitchen Hood, RFI -001, Emails 051324- HVAC and ELEC. Coord mtg, 051624 RFI-001	PRIME CONTRACT CHANGE ORDER:	#001 - PCO's Incl: PCO-001, PCO-002, PCO-003
FIELD CHANGE:	No		
LOCATION:		ACCOUNTING METHOD:	Amount Based
SCHEDULE IMPACT:	0 days	PAID IN FULL:	No
EXECUTED:	No	SIGNED CHANGE ORDER RECEIVED DATE:	
		TOTAL AMOUNT:	\$11,545.00

POTENTIAL CHANGE ORDER TITLE: RFI #001 - HVAC and Electrical Coordination

CHANGE REASON: Design Development

POTENTIAL CHANGE ORDER DESCRIPTION: *(The Contract Is Changed As Follows)*
RFI #001 - HVAC and Electrical Coordination

Please refer to the cover letter for a detailed description of the scope.

ATTACHMENTS:

[PCO-00~1.PDF](#)

#	Budget Code	Description	Amount
1	16-99-100.S Electrical.Subcontract	--HVAC and Electrical Coordination	\$10,593.00
2	01-04-100.L Project Super./Mngmnt. Team.Labor	--Managerial Processing	\$95.00

#	Budget Code	Description	Amount
3	01-04-130.L Project/Office Engineer.Labor	--As-built Drawings	\$29.00
Subtotal:			\$10,717.00
Payroll Taxes & Insurance (≈ 35.48% Applies to Labor.):			\$44.00
Subcontractor General Liability Insurance (≈ 0.35% Applies to Subcontract.):			\$37.00
Pollution Insurance (≈ 0.08% Applies to all line item types.):			\$9.00
Builders Risk Insurance.Materials (≈ 0.16% Applies to all line item types.):			\$17.00
Management Software (≈ 0.24% Applies to all line item types.):			\$26.00
Subcontractor Default Insurance (≈ 1.28% Applies to all line item types.):			\$137.00
Bond (0.00% Applies to all line item types.):			\$0.00
EVERGREEN Markup Self-Perform (≈ 9.99% Applies to Equipment, Materials, Labor, Other, and Labor Burden.):			\$17.00
EVERGREEN Markup Subcontract (5.00% Applies to Subcontract.):			\$541.00
Grand Total:			\$11,545.00

Neal Ridgel (Epsten Group)

The DeKalb County Board of Education
 1701 Mountain Industrial Blvd
 Stone Mountain, Georgia 30083

Evergreen Construction
 3200 Cobb Galleria Parkway, Suite 240
 Atlanta, Georgia 30339

 SIGNATURE DATE

 SIGNATURE DATE

 SIGNATURE DATE



May 13, 2024

Mr. Donta Collins
Dekalb County School District
1780 Montreal Road
Tucker, GA

RE: Tucker Middle School, HVAC and Controls Replacement
IOC #001 – RFI #001 - HVAC Equipment and Electrical Coordination

Dear Donta:

Attached please find our proposal for the revisions associated with the response to RFI #001 - HVAC Equipment and Electrical Coordination. Per the response, upon the review of the HVAC equipment against the electrical drawings and existing service, we noted several discrepancies which the MEP engineer issued remedies to reconcile the conflicts. Enclosed is our detailed breakdown and back-up associated with this response to RFI #001 - HVAC Equipment and Electrical Coordination.

This Item of Change (I.O.C. 001) results in an add cost of **\$11,545.00** to the current contract value. Please note that this change does not include or account for material escalation/expediting should the work be impacted due to unforeseen schedule impacts.

Should you have any questions or need any additional information, please do not hesitate to contact me directly at 678-244-6550.

Sincerely:

A handwritten signature in black ink, appearing to read "Zack DeGrendel", is written over a light blue horizontal line.

Zack DeGrendel
Project Manager

Enclosure(s)

cc: Steve Hall – Evergreen



ITEM OF CHANGE

Project Name: Tucker Middle School - HVAC Replacement
Location: 2160 Idlewood Road, Tucker, GA. 30084
Architect: EpstenGroup
Description of Change: RFI #001 - HVAC Equipment and Electrical Coordination

I.O.C. No. 001
Date: 5/13/2024
Evergreen Job No. 2023-00

CODE	DESCRIPTION	QUAN.	U.M.	MATERIAL COST		LABOR COST		SUB COST	
				\$/UNIT	PRICE	\$/UNIT	PRICE	\$/UNIT	PRICE
16.99.100	Electrical				0		0		0
	HVAC and Electrical Coordination	1	LS		0		0	10593.44	10,593
					0		0		0
					0		0		0
01-06.700	LAYOUT & SURVEY	0	MHR		0	173	0		0
01-16.100	DRAWINGS AND PRINTING	0	LS		0.00		0		0
01-22.100	TRAFFIC CONTROL	0	MHR		0	25	0		0
01-26.420	BARRICADES	0	LS	1500	0		0		0
01-26.610	TEMPORARY PROTECTION	0	SF	0.5	0	0.75	0		0
01-30.100	CONTINUOUS CLEAN-UP	0	MHR		0	25	0		0
01-30.400	DUMPSTERS	0	PULL	985	0		0		0
01-99.100	EQUIPMENT RENTAL	0	LS		0		0		0
01-99.200	QUALITY CONTROL	0	MHR		0	110	0		0
01-99.300	MANAGERIAL PROCESSING	1	MHR		0	95	95		0
01-99.500	AS-BUILT DRAWINGS	1	MHR		0	28.5	29		0
01-99.700	SMALL TOOLS / MISC. MATERIALS	0	LS	150	0		0		0
02-01.010	EROSION CONTROL	0	LS	1000	0	650	0		0
	SUBTOTAL				0		124		10,593
	Payroll Taxes & Insurance						44		
	Sales Tax (8.00%)				0				
	TOTALS				0		167		10,593
	Subcontractor General Liability Insurance				0		1		36
	Pollution Insurance				0		0		9
	Builder's Risk Insurance Premium				0		0		17
	Management Software				0		0		26
	Subcontractor Default Insurance				0		2		136
	EVERGREEN MARKUP				-		17		541
	GRAND TOTAL								\$11,545

Authorizing Signature: _____

date: _____

RFI #1: HVAC Equipment and Electrical Coordination

Status	Open		
To	Neal Ridgel (Epsten Group)	From	Steve Hall (Evergreen Construction) Georgia
Date Initiated	Oct 23, 2023	Due Date	Oct 26, 2023
Location		Project Stage	Course of Construction
Cost Impact	TBD	Schedule Impact	
Spec Section	26 24 16 - Panelboards	Cost Code	
Drawing Number	E-002, M-002, M-003, M-004, M005,	Reference	
Linked Drawings			
Received From	Luke Raper (MWI Electrical Contractors,Inc)		
Copies To	Ryan Chambers (Lanier HVAC Services), Davina Cupp (Polk County Public Service Inc), Emilie Hayes (Evergreen Construction), Luke Raper (MWI Electrical Contractors,Inc)		

Activity

Question

Question from Steve Hall Evergreen Construction on Monday, Oct 23, 2023 at 10:05 AM EDT

Upon review of the HVAC equipment submittals, electrical plans, and existing onsite electrical, we found the following discrepancies between the HVAC equipment and scheduled electrical service:

1. RTU-4 - Sheet E-002 indicates to reuse the existing 15 amp breaker for the new RTU. the new RTU requires a 20MFA service. While were unable to locate the existing breaker, we were able to identify that the existing RTU utilized a 20amp service. Please confirm we are to reuse the existing 20amp feed with the new RTU.
2. KEF 1 - While we are utilizing the specified exhaust fan, in order to meet the CFM requirements, it is necessary to provide a 208V/3P service to the fan (see attached cut sheets). Please identify a new circuit location for the 3phase 208V circuit required for KEF-1.
3. WSHP E - The existing feed to the WSHP E that serves Classroom 63 is 277V/1P. All existing feeds are 480V/3P. Please confirm if we are to provide a new breaker for this WSHP along with a circuit location to be utilized.
4. CT-1 - While the electrical plans do call for a 30A/3P/40V breaker to be provided, the new specified cooling tower will also require additional 460V/3P breakers for the heater and basin pump. Please confirm these additional circuits are necessary along with a circuit location.

Attachments

[236514.16 Closed Circuit Cooling Tower.pdf](#), [233813 Commercial Kitchen Hood.pdf](#), [RFI #001 - HVAC Equipment and Electrical Coordination.pdf](#)

Awaiting an Official Response

All Replies

Response from Neal Ridgel Epsten Group on Monday, Oct 30, 2023 at 04:21 PM EDT

Response from MEP

Attachments

[Briarlake - RFI #001 - HVAC Equipment and Electrical Coordination_GTP Responses.pdf](#)

RFI #1: HVAC Equipment and Electrical Coordination

Status	Open		
To	Neal Ridgel (Epsten Group)	From	Steve Hall (Evergreen Construction) Georgia
Date Initiated	Oct 23, 2023	Due Date	Oct 26, 2023
Location		Project Stage	Course of Construction
Cost Impact	TBD	Schedule Impact	
Spec Section	26 24 16 - Panelboards	Cost Code	
Drawing Number	E-002, M-002, M-003, M-004, M005,	Reference	
Linked Drawings			
Received From	Luke Raper (MWI Electrical Contractors,Inc)		
Copies To	Ryan Chambers (Lanier HVAC Services), Davina Cupp (Polk County Public Service Inc), Emilie Hayes (Evergreen Construction), Luke Raper (MWI Electrical Contractors,Inc)		

Activity

Question

Question from Steve Hall Evergreen Construction on Monday, Oct 23, 2023 at 10:05 AM EDT

Upon review of the HVAC equipment submittals, electrical plans, and existing onsite electrical, we found the following discrepancies between the HVAC equipment and scheduled electrical service:

1. RTU-4 - Sheet E-002 indicates to reuse the existing 15 amp breaker for the new RTU. the new RTU requires a 20MFA service. While were unable to locate the existing breaker, we were able to identify that the existing RTU utilized a 20amp service. Please confirm we are to reuse the existing 20amp feed with the new RTU.
2. KEF 1 - While we are utilizing the specified exhaust fan, in order to meet the CFM requirements, it is necessary to provide a 208V/3P service to the fan (see attached cut sheets). Please identify a new circuit location for the 3phase 208V circuit required for KEF-1.
3. WSHP E - The existing feed to the WSHP E that serves Classroom 63 is 277V/1P. All existing feeds are 480V/3P. Please confirm if we are to provide a new breaker for this WSHP along with a circuit location to be utilized.
4. CT-1 - While the electrical plans do call for a 30A/3P/40V breaker to be provided, the new specified cooling tower will also require additional 460V/3P breakers for the heater and basin pump. Please confirm these additional circuits are necessary along with a circuit location.

Attachments

236514.16 Closed Circuit Cooling Tower.pdf, 233813 Commercial Kitchen Hood.pdf, RFI #001 - HVAC Equipment and Electrical Coordination.pdf

Awaiting an Official Response

Please see second page for responses.

RFI #1: HVAC Equipment and Electrical Coordination

GTP Responses:

1. The 15A listed on sheet E-002 is in reference to the Minimum Circuit Ampacity (MCA), not the circuit breaker. Based on the submitted RTU-4 the MCA increased to 17A but still only requires a 20A/3P circuit breaker. If the existing circuiting is 3#12 & 1#12G in 1/2"C, then existing circuiting can be reused to feed the new RTU-4. If not, then contractor is to route new 3#12 & 1#12G in 1/2"C to a 20A/3P circuit breaker.
2. For KEF-1, route 3#12 & 1#12G in 1/2"C to a 20A/3P circuit breaker in nearest available 208Y/120V panelboard (Panel I - to be field verified).
3. For WSHP-E serving classroom 63, route 3#12 & 1#12G in 1/2"C to a 15A/3P circuit breaker in nearest available 480Y/277V panelboard (Panel MHA; Panel N - To be field verified.)
4. The submitted CT-1 requires (1) 480V/3PH circuit for the 3HP spray pump, (1) 480V/3PH circuit for the 15HP fan motor, (1) 480V/3PH circuit for the Heater Control Panel and (1) 120V/1PH circuit for the vibration switch remote reset. Please provide the following for the unit:
 - Route 3#12 & 1#12G in 1/2"C to a 20A/3P circuit breaker in Panel N for Spray Pump power.
 - Route 3#10 & 1#10G in 3/4"C to a 50A/3P circuit breaker in Panel N for Fan Motor power.
 - Route 3#12 & 1#12G in 1/2"C to a 20A/3P circuit breaker in Panel N for Heater Control Panel power.
 - Route 2#12 & 1#12G in 1/2"C to a 20A/1P circuit breaker in Panel G for Vibration Switch Remote Reset.



Electrical Contractors, Inc.
78 Hamby Road, S.E. · Marietta, Georgia 30067
O-770-971-9289 / F-770-971-9280

DATE: 1/2/23
TO: Evergreen Construction
ATTN: Emilie Hayes
PROJECT: Tucker Middle School

CHANGE ORDER #001

The following is a pricing breakdown for:

Electrical changes made per the RFI#1 response for Tucker Middle School for the Mechanical Electrical Coordination

Description of Additional Work:

- RTU 3:
 - Demo approximately 310' of wire feeding existing unit, and replace with 3 #8, 1 #10 ground. Conduit is to be re-used.
 - No change in price for breaker size increase due to the fact that the breaker was already scheduled to be replaced per the drawings.
- RTU 4:
 - Demo approximately 75' of wire feeding existing unit, and replace with 3 #8, 1 #10 ground. Conduit is to be re-used.
 - No change in price for breaker size increase due to the fact that the breaker was already scheduled to be replaced per the drawings.
- RTU 8:
 - Replace 120' of 3 #8, 1 #10 ground with 3 #10, 1 #10 ground
 - No change in price for breaker size decrease due to the fact that the breaker was already scheduled to be replaced per the drawings.
- RTU 9:
 - Replace 135' of 3 #3, 1 #8 ground with 3 #4, 1 #8 ground
 - No change in price for breaker size decrease due to the fact that the breaker was already scheduled to be replaced per the drawings.
- RTU 10:
 - Replace 145' of 3 #3, 1 #8 ground with 3 #4, 1 #8 ground
 - No change in price for breaker size decrease due to the fact that the breaker was already scheduled to be replaced per the drawings.
- RTU 11:
 - Demo approximately 260' of wire feeding existing unit are replace with 3 #10, 1 #10 ground
 - No change in price for breaker size increase due to the fact that the breaker was already scheduled to be replaced per the drawings.
- RTU 12
 - No change. Existing wire size is the same as shown on RFI response. Breaker is already scheduled to be replaced.
- RTU 13:
 - Replace existing breaker scheduled to be reused with 50A/3 pole breaker
- KEF-2:
 - No change in price



Electrical Contractors, Inc.
78 Hamby Road, S.E. · Marietta, Georgia 30067
O-770-971-9289 / F-770-971-9280

-
- SF-2:
 - No change in price
 - EH-B:
 - No change in price
 - WSHP-D:
 - Replace 125' of existing wire feeding unit with 3 #12, 1# 12 ground
 - Replace existing breaker with 20A/3 pole breaker
 - WSHP-C(9 total):
 - Replace 460' of existing wire with 2 #10, 1 #10 ground
 - Replace existing breakers with 25A/1 pole breaker
 - WSHP-A:
 - Replace existing breaker with 15A/1 pole breaker
 - WSHP-G(13 total):
 - Replace existing breakers with 20A/3 pole breakers

Cost:

Labor:	40.34hrs. @ \$65 per hr.	\$2,622.10
Material:		\$6,003.43
Overhead:	10% x \$8,625.53	\$862.55
Profit:	10% x \$9,488.08	\$948.81
Bond:	1.5% x \$10,436.88	\$156.55

Total Cost: **\$10,593.44**

Please feel free to contact me if you have any questions:

Respectfully,

Luke Raper

MWI Electrical Contractors, Inc.

Tucker Middle School- RFI#1 Response- Elect Mech Coordination changes

Description	Quantity	Total Material	Total Hours
1 #12 THHN BLACK	500	\$65.76	2.58
2 #10 THHN BLACK	2,900	\$583.36	16.39
3 # 8 THHN BLACK	795	\$298.22	5.57
4 # 4 THHN BLACK	840	\$741.89	8.57
5 # 3 THHN BLACK	-840	-\$935.75	-10
6 #10 THHN GREEN	265	\$53.31	1.5
7 # 8 THHN GREEN	0	\$0.00	0
8 15A 1P BREAKER MOLDED CASE - OPEN	1	\$39.00	0.45
9 30A 1P BREAKER MOLDED CASE - OPEN	9	\$882.00	4.03
10 20A 3P BREAKER MOLDED CASE - OPEN	14	\$3,640.00	10.5
11 50A 3P BREAKER MOLDED CASE - OPEN	1	\$145.00	0.75

Total

\$5,512.79 40.34

Sales Tax @ 8.9%

\$490.64

Total Material Cost:

\$6,003.43

Total Labor Cost @\$65.00 hr:

\$2,622.10

Total Cost:

\$8,625.53

Overhead @ 10%:

\$862.55

Profit @ 10%:

\$948.81

Bond @ 1.5%:

\$156.55

Grand Total:

\$10,593.44



June 17, 2024

Mr. Donta Collins
Dekalb County School District
1780 Montreal Road
Tucker, GA

RE: Tucker Middle School, HVAC and Controls Replacement
PCO-002 IOC #002 – RFI #002 – Heat Exchanger Automatic Backflush System

Dear Donta:

Per the response to the submittal 23 57 00-1.0 – Heat Exchanger – Product Data, it was noted to incorporate an automatic backflush system on the heat exchanger. As noted through RFI #002, the backflush system was not specified as part of the original bid documents (see enclosed RFI #002).

This Potential Change Order (PCO-002) results in an add cost of \$43,802.00 our current contract value. Attached is a detailed breakdown of this change for your use as well as all relevant back-up pricing documentation. Please note that this change does not include or account for material escalation should the work be impacted due to unforeseen schedule impacts.

Should you have any questions or need any additional information, please do not hesitate to contact me directly at 678-244-6544.

Sincerely:

A handwritten signature in blue ink that reads "S Hall".

Steve Hall
Project Manager

Enclosure(s)

cc: Emilie Chegwidden, Zack DeGrendel – Evergreen

Evergreen Construction
 3200 Cobb Galleria Parkway, Suite 240
 Atlanta, Georgia 30339
 Phone: 678 244 6500

Project: 2023-016 - Tucker Middle School
 2160 Idlewood Road
 Tucker, Georgia 30084

Prime Contract Potential Change Order #002: RFI #002 - Heat Exchanger Automatic Backflush System

TO:	The DeKalb County Board of Education 1701 Mountain Industrial Blvd Stone Mountain, Georgia 30083	FROM:	Evergreen Construction 3200 Cobb Galleria Parkway, Suite 240 Atlanta, Georgia 30339
PCO NUMBER/REVISION:	002 / 0	CONTRACT:	2023-016 - Tucker Middle School, HVAC and Controls Replacement
REQUEST RECEIVED FROM:		CREATED BY:	Jorge Orobitg (Evergreen Construction)
STATUS:	Pending - In Review	CREATED DATE:	6/12/2024
REFERENCE:	submittal 23 57 00-1.0 – Heat Exchanger – Product Data & RFI -002	PRIME CONTRACT CHANGE ORDER:	#001 - PCO's Incl: PCO-001, PCO-002, PCO-003
FIELD CHANGE:	No		
LOCATION:		ACCOUNTING METHOD:	Amount Based
SCHEDULE IMPACT:	0 days	PAID IN FULL:	No
EXECUTED:	No	SIGNED CHANGE ORDER RECEIVED DATE:	
		TOTAL AMOUNT:	\$43,802.00

POTENTIAL CHANGE ORDER TITLE: RFI #002 - Heat Exchanger Automatic Backflush System

CHANGE REASON: Design Development

POTENTIAL CHANGE ORDER DESCRIPTION: *(The Contract Is Changed As Follows)*
 RFI #002 - Heat Exchanger Automatic Backflush System

Please refer to the Cover Letter for a detailed scope of work.

ATTACHMENTS:

#	Budget Code	Description	Amount
1	15-99-100.S H.V.A.C..Subcontract	RFI #002 - Heat Exchanger Automatic Backflush System	\$41,002.00
		Subtotal:	\$41,002.00
		Payroll Taxes & Insurance (35.32% Applies to Labor.):	\$0.00
		Subcontractor General Liability Insurance (≈ 0.14% Applies to Subcontract.):	\$56.00
		Pollution Insurance (≈ 0.09% Applies to all line item types.):	\$35.00
		Builders Risk Insurance.Materials (≈ 0.16% Applies to all line item types.):	\$64.00
		Management Software (0.00% Applies to all line item types.):	\$0.00
		Subcontractor Default Insurance (≈ 1.29% Applies to all line item types.):	\$527.00
		Bond (0.00% Applies to all line item types.):	\$0.00
		EVERGREEN Markup Self-Perform (10.00% Applies to Equipment, Materials, Labor, Other, and Labor Burden.):	\$0.00
		EVERGREEN Markup Subcontract (≈ 5.08% Applies to Subcontract.):	\$2,118.00
		Grand Total:	\$43,802.00

Neal Ridgel (Epsten Group)

The DeKalb County Board of Education
1701 Mountain Industrial Blvd
Stone Mountain, Georgia 30083

Evergreen Construction
3200 Cobb Galleria Parkway, Suite 240
Atlanta, Georgia 30339

SIGNATURE DATE

SIGNATURE DATE

SIGNATURE DATE



ITEM OF CHANGE

Project Name: TUCKER MIDDLE SCHOOL, HVAC AND CONTROLS REPLACEMENT
Location: TUCKER
Architect: EPSTEN GROUP
Description of Change: RFI #02 - HEAT EXCHANGER AUTOMATIC BACKFLUSH SYSTEM

I.O.C. No. 002
Date: 12/20/2023
 Evergreen Job No. 2023-016

CODE	DESCRIPTION	QUAN.	U.M.	MATERIAL COST		LABOR COST		SUB COST	
				\$/UNIT	PRICE	\$/UNIT	PRICE	\$/UNIT	PRICE
					0		0		0
15-99.100	HVAC				0		0		0
	RFI #002 - HEAT EXCHANGER AUTOMATIC BACKFLUSH	1	LS		0		0	41002.15	41,002
					0		0		0
					0		0		0
					0		0		0
					0		0		0
01-06.100	LAYOUT ENGINEER	0	MHR		0	45	0		0
01-06.400	LAYOUT ASSISTANT	0	MHR		0	35	0		0
01-22.100	TRAFFIC CONTROL	0	MHR		0	25	0		0
01-26.420	BARRICADES	0	LS	1500	0		0		0
01-26.610	TEMPORARY PROTECTION	0	SF	0.5	0	0.5	0		0
01-30.100	CONTINUOUS CLEAN-UP	0	MHR		0	25	0		0
01-30.400	DUMPSTERS	0	PULL	550	0		0		0
01-99.200	QUALITY CONTROL	0	MHR		0	65	0		0
01-99.500	AS-BUILT DRAWINGS	0	MHR		0	28.5	0		0
SUBTOTAL					0		0		41,002
	Payroll Taxes & Insurance						0		
	Small Tools						0		
	Equipment Rental						0		
	Drawings & Printing						0		
	Sales Tax (8%)						0		
TOTALS					0		0		41,002
	Subcontractor General Liability Insurance						56		
	Pollution Insurance						35		
	Builder's Risk Insurance Premium						64		
	Subcontractor Default Insurance						527		
	EVERGREEN MARKUP				-		68		2,050
GRAND TOTAL									\$43,802

Approved by (Signature): _____

Approved by (Print name): _____

Approved Date: _____

RFI #2: Heat Exchanger - Automatic Backflush System

Status	Open		
To	Neal Ridgel (Epsten Group) Olu Oshinubi (Epsten Group) Craig Goldstein (GTP Engineering & Consultants)	From	Steve Hall (Evergreen Construction) Georgia
Date Initiated	Dec 6, 2023	Due Date	Dec 9, 2023
Location		Project Stage	Course of Construction
Cost Impact	TBD	Schedule Impact	TBD
Spec Section	235700 - Heat Exchangers for HVAC	Cost Code	
Drawing Number	M-002	Reference	
Linked Drawings			
Received From	Ryan Chambers (Lanier HVAC Services)		
Copies To			

Activity

Question

Question from Steve Hall Evergreen Construction on Wednesday, Dec 6, 2023 at 03:23 PM EST
 Ref: M-002 & Submittal 23 57-00-1.1 Heat Exchanger - Product Data

Per the returned submittal 23 57 00-1.1 it is noted to follow all specifications and notes regarding the heat exchanger. The contract drawings dated 3/31/23 do not provide any notes associated with the heat exchanger (see attached sheet M-002). It is our understanding that the engineer and equipment vendor communicated directly during the submittal process at which point an updated equipment schedule was provided for the heat exchanger (see attached email). This new schedule provided a note for an automatic backflush system to be incorporated with the heat exchanger. Can you confirm that an automatic backflush systems is required, and, if so, please provide an updated equipment schedule and specification with this RFI response.

Attachments
[Tucker MS - Heat Exchanger Issue.msg](#), [M-002.pdf](#)

Awaiting an Official Response

All Replies

Response from Craig Goldstein GTP Engineering & Consultants on Tuesday, Dec 12, 2023 at 09:22 AM EST
 The attached drawing is from a progress set and not the 100% CD Set.

WATER SOURCE HEAT PUMP SCHEDULE

MARK	MODEL#	SUPPLY		MATERIAL CITY	CONDENSER COIL		WATER FLOW	CONNECTION	TOTAL	SERVICES		CONDENSING CAPACITY		HEATING CAPACITY		WEIGHT (LBS)	MODEL	NOTES	
		FLOW (GPM)	TEMP (°F)		SIZE (IN)	SIZE (IN)				SIZE (IN)	SIZE (IN)	SIZE (IN)	SIZE (IN)	SIZE (IN)	SIZE (IN)				SIZE (IN)
WSPR-A	50PCH418	650	35°	1.5	4.0	1.5	1.5	1.5	1.5	1.5	1.5	1.5	1.5	1.5	1.5	1.5	1.5	1.5	1.5
WSPR-B	50PCH418	650	35°	1.5	4.0	1.5	1.5	1.5	1.5	1.5	1.5	1.5	1.5	1.5	1.5	1.5	1.5	1.5	1.5
WSPR-C	50PCH418	650	35°	1.5	4.0	1.5	1.5	1.5	1.5	1.5	1.5	1.5	1.5	1.5	1.5	1.5	1.5	1.5	1.5
WSPR-D	50PCH418	650	35°	1.5	4.0	1.5	1.5	1.5	1.5	1.5	1.5	1.5	1.5	1.5	1.5	1.5	1.5	1.5	1.5
WSPR-E	50PCH418	650	35°	1.5	4.0	1.5	1.5	1.5	1.5	1.5	1.5	1.5	1.5	1.5	1.5	1.5	1.5	1.5	1.5
WSPR-F	50PCH418	650	35°	1.5	4.0	1.5	1.5	1.5	1.5	1.5	1.5	1.5	1.5	1.5	1.5	1.5	1.5	1.5	1.5
WSPR-G	50PCH418	650	35°	1.5	4.0	1.5	1.5	1.5	1.5	1.5	1.5	1.5	1.5	1.5	1.5	1.5	1.5	1.5	1.5

1. PROVIDE WATER SOURCE HEAT PUMP SCHEDULES FOR ALL WATER SOURCE HEAT PUMPS.
2. PROVIDE WATER SOURCE HEAT PUMP SCHEDULES FOR ALL WATER SOURCE HEAT PUMPS.
3. WATER SOURCE HEAT PUMP SCHEDULES SHALL BE PROVIDED FOR ALL WATER SOURCE HEAT PUMPS.
4. PROVIDE WATER SOURCE HEAT PUMP SCHEDULES FOR ALL WATER SOURCE HEAT PUMPS.

PACKAGED ROOFTOP UNIT SCHEDULE

MARK	SERVICES	NOMINAL (LONG)	NOMINAL (SHORT)	WATER FLOW (GPM)	CONDENSING CAPACITY (TONS)	HEATING CAPACITY (BTU/H)	EFFECTIVE (BTU/H)	EER (BTU/WH)	SEER (BTU/WH)	EER (BTU/WH)	SEER (BTU/WH)	WEIGHT (LBS)	MODEL	NOTES
RU1	CLASSROOM	18	18	1.0	2.0	18,000	18,000	13.0	13.0	13.0	13.0	600	COMFORT-48000000000000000000	1.4
RU2	CLASSROOM	18	18	1.0	2.0	18,000	18,000	13.0	13.0	13.0	13.0	600	COMFORT-48000000000000000000	1.4
RU3	CLASSROOM	18	18	1.0	2.0	18,000	18,000	13.0	13.0	13.0	13.0	600	COMFORT-48000000000000000000	1.4
RU4	CLASSROOM	18	18	1.0	2.0	18,000	18,000	13.0	13.0	13.0	13.0	600	COMFORT-48000000000000000000	1.4
RU5	CLASSROOM	18	18	1.0	2.0	18,000	18,000	13.0	13.0	13.0	13.0	600	COMFORT-48000000000000000000	1.4
RU6	CLASSROOM	18	18	1.0	2.0	18,000	18,000	13.0	13.0	13.0	13.0	600	COMFORT-48000000000000000000	1.4
RU7	CLASSROOM	18	18	1.0	2.0	18,000	18,000	13.0	13.0	13.0	13.0	600	COMFORT-48000000000000000000	1.4
RU8	CLASSROOM	18	18	1.0	2.0	18,000	18,000	13.0	13.0	13.0	13.0	600	COMFORT-48000000000000000000	1.4
RU9	CLASSROOM	18	18	1.0	2.0	18,000	18,000	13.0	13.0	13.0	13.0	600	COMFORT-48000000000000000000	1.4
RU10	CLASSROOM	18	18	1.0	2.0	18,000	18,000	13.0	13.0	13.0	13.0	600	COMFORT-48000000000000000000	1.4
RU11	CLASSROOM	18	18	1.0	2.0	18,000	18,000	13.0	13.0	13.0	13.0	600	COMFORT-48000000000000000000	1.4
RU12	CLASSROOM	18	18	1.0	2.0	18,000	18,000	13.0	13.0	13.0	13.0	600	COMFORT-48000000000000000000	1.4
RU13	CLASSROOM	18	18	1.0	2.0	18,000	18,000	13.0	13.0	13.0	13.0	600	COMFORT-48000000000000000000	1.4
RU14	CLASSROOM	18	18	1.0	2.0	18,000	18,000	13.0	13.0	13.0	13.0	600	COMFORT-48000000000000000000	1.4
RU15	CLASSROOM	18	18	1.0	2.0	18,000	18,000	13.0	13.0	13.0	13.0	600	COMFORT-48000000000000000000	1.4
RU16	CLASSROOM	18	18	1.0	2.0	18,000	18,000	13.0	13.0	13.0	13.0	600	COMFORT-48000000000000000000	1.4
RU17	CLASSROOM	18	18	1.0	2.0	18,000	18,000	13.0	13.0	13.0	13.0	600	COMFORT-48000000000000000000	1.4
RU18	CLASSROOM	18	18	1.0	2.0	18,000	18,000	13.0	13.0	13.0	13.0	600	COMFORT-48000000000000000000	1.4
RU19	CLASSROOM	18	18	1.0	2.0	18,000	18,000	13.0	13.0	13.0	13.0	600	COMFORT-48000000000000000000	1.4
RU20	CLASSROOM	18	18	1.0	2.0	18,000	18,000	13.0	13.0	13.0	13.0	600	COMFORT-48000000000000000000	1.4
RU21	CLASSROOM	18	18	1.0	2.0	18,000	18,000	13.0	13.0	13.0	13.0	600	COMFORT-48000000000000000000	1.4
RU22	CLASSROOM	18	18	1.0	2.0	18,000	18,000	13.0	13.0	13.0	13.0	600	COMFORT-48000000000000000000	1.4
RU23	CLASSROOM	18	18	1.0	2.0	18,000	18,000	13.0	13.0	13.0	13.0	600	COMFORT-48000000000000000000	1.4
RU24	CLASSROOM	18	18	1.0	2.0	18,000	18,000	13.0	13.0	13.0	13.0	600	COMFORT-48000000000000000000	1.4
RU25	CLASSROOM	18	18	1.0	2.0	18,000	18,000	13.0	13.0	13.0	13.0	600	COMFORT-48000000000000000000	1.4
RU26	CLASSROOM	18	18	1.0	2.0	18,000	18,000	13.0	13.0	13.0	13.0	600	COMFORT-48000000000000000000	1.4
RU27	CLASSROOM	18	18	1.0	2.0	18,000	18,000	13.0	13.0	13.0	13.0	600	COMFORT-48000000000000000000	1.4
RU28	CLASSROOM	18	18	1.0	2.0	18,000	18,000	13.0	13.0	13.0	13.0	600	COMFORT-48000000000000000000	1.4
RU29	CLASSROOM	18	18	1.0	2.0	18,000	18,000	13.0	13.0	13.0	13.0	600	COMFORT-48000000000000000000	1.4
RU30	CLASSROOM	18	18	1.0	2.0	18,000	18,000	13.0	13.0	13.0	13.0	600	COMFORT-48000000000000000000	1.4
RU31	CLASSROOM	18	18	1.0	2.0	18,000	18,000	13.0	13.0	13.0	13.0	600	COMFORT-48000000000000000000	1.4
RU32	CLASSROOM	18	18	1.0	2.0	18,000	18,000	13.0	13.0	13.0	13.0	600	COMFORT-48000000000000000000	1.4
RU33	CLASSROOM	18	18	1.0	2.0	18,000	18,000	13.0	13.0	13.0	13.0	600	COMFORT-48000000000000000000	1.4
RU34	CLASSROOM	18	18	1.0	2.0	18,000	18,000	13.0	13.0	13.0	13.0	600	COMFORT-48000000000000000000	1.4
RU35	CLASSROOM	18	18	1.0	2.0	18,000	18,000	13.0	13.0	13.0	13.0	600	COMFORT-48000000000000000000	1.4
RU36	CLASSROOM	18	18	1.0	2.0	18,000	18,000	13.0	13.0	13.0	13.0	600	COMFORT-48000000000000000000	1.4
RU37	CLASSROOM	18	18	1.0	2.0	18,000	18,000	13.0	13.0	13.0	13.0	600	COMFORT-48000000000000000000	1.4
RU38	CLASSROOM	18	18	1.0	2.0	18,000	18,000	13.0	13.0	13.0	13.0	600	COMFORT-48000000000000000000	1.4
RU39	CLASSROOM	18	18	1.0	2.0	18,000	18,000	13.0	13.0	13.0	13.0	600	COMFORT-48000000000000000000	1.4
RU40	CLASSROOM	18	18	1.0	2.0	18,000	18,000	13.0	13.0	13.0	13.0	600	COMFORT-48000000000000000000	1.4
RU41	CLASSROOM	18	18	1.0	2.0	18,000	18,000	13.0	13.0	13.0	13.0	600	COMFORT-48000000000000000000	1.4
RU42	CLASSROOM	18	18	1.0	2.0	18,000	18,000	13.0	13.0	13.0	13.0	600	COMFORT-48000000000000000000	1.4
RU43	CLASSROOM	18	18	1.0	2.0	18,000	18,000	13.0	13.0	13.0	13.0	600	COMFORT-48000000000000000000	1.4
RU44	CLASSROOM	18	18	1.0	2.0	18,000	18,000	13.0	13.0	13.0	13.0	600	COMFORT-48000000000000000000	1.4
RU45	CLASSROOM	18	18	1.0	2.0	18,000	18,000	13.0	13.0	13.0	13.0	600	COMFORT-48000000000000000000	1.4
RU46	CLASSROOM	18	18	1.0	2.0	18,000	18,000	13.0	13.0	13.0	13.0	600	COMFORT-48000000000000000000	1.4
RU47	CLASSROOM	18	18	1.0	2.0	18,000	18,000	13.0	13.0	13.0	13.0	600	COMFORT-48000000000000000000	1.4
RU48	CLASSROOM	18	18	1.0	2.0	18,000	18,000	13.0	13.0	13.0	13.0	600	COMFORT-48000000000000000000	1.4
RU49	CLASSROOM	18	18	1.0	2.0	18,000	18,000	13.0	13.0	13.0	13.0	600	COMFORT-48000000000000000000	1.4
RU50	CLASSROOM	18	18	1.0	2.0	18,000	18,000							



JMP Equipment Company, LLC

Heating, Cooling, and Plumbing Representatives
since 1958

www.jmpco.com

Quotation No. MQ-56995-R1

JMP Equipment Company, LLC	Bid Date	6/22/2023
	Date:	6/23/2023
	Job:	Tucker Middle School HVAC Replacement
Phone: 800-365-9010		Tucker, GA
Email: christianp@jmpco.com	Engineer:	GTP Consulting Engineers

We are pleased to quote you on the following equipment for the above job subject to approval. Quantities listed are not guaranteed and should be verified. Prices will be adjusted accordingly. This quotation is subject to change without notice and void after 30 days unless otherwise stated below. All Contracts or Orders are subject to acceptance by the Company and are contingent upon non-occurrence of strikes or other delays beyond their control. In addition to prices named herein, you are to pay any applicable sales taxes.

QTY	Description & Group	Total WT (lbs)	Price Each	Total Net Price
1	<p>Item A - BAC Cooling Tower</p> <p><u>Tag: CT-1</u></p> <p>Model: PT2-0812A-2M1</p> <p>Certified Capacity: 895.00 USGPM of water from 95.00°F to 85.00°F at 78.00°F entering air wet bulb.</p> <p>Fan Motor: One (1) 20 HP fan motor: Totally Enclosed, Fan Cooled (TEFC), 1 Speed/1 Winding - Premium Efficiency (Inverter Duty), suitable for 460 volt, 3 phase, 60 hertz electrical service and Space Heater.</p> <p>Equipment Summary:</p> <ul style="list-style-type: none"> ● Induced Draft, Counterflow Cooling Tower ● Quality Assurance - ISO 9001 Compliant ● Unit Energy Efficiency per ASHRAE Standard 90.1-2016 ● CTI Certified Thermal Performance ● Steel Panels and Structural Elements are Constructed of Heavy Gauge Galvanized Steel ● Standard Fan driven by the BALTIDRIVE® Power Train ● Galvanized Steel Fan Guard ● PVC Film Wet Deck Material ● PVC Drift Eliminators ● Structure Designed in accordance with the IBC and ASCE/SEI 7 ● Standard End or Side Inlet Connection ● Side Outlet Pump Suction Connection ● Type 304 Stainless Steel Strainer ● Mechanical Float Valve Assembly ● Electric Immersion Heater(s) Sized to Maintain +40°F water at a 0°F Ambient with Electrical Requirements Matching Fan Motor(s) ● Copper Heater Elements ● Heater Control Panel with Contactor and Disconnect ● Mechanical Vibration Cutout Switch with Alarm Contact ● Fill Inspection Panel 			

- Access Platform with Safety Gate & Ladder
- 4' Ladder Extension(s) for each Ladder
- Freight to First Destination in Atlanta, GA (FOB Factory)

Not included (other than listed above): water treatment system, stainless steel construction, valves, motor starters, disconnects, inverters (VFD), grounding rings, equalizer/bypass connections, non-standard connection sizes/locations, Electric Water Level Controller, sweeper piping, davit, flanges, vibration isolation, support steel, ladder latch/lock hardware, temperature controls, heat tracing, spare parts, startup/training, commissioning, testing, passivation, installation/assembly, extended or labor warranties, rigging, storage, taxes or anything not specifically mentioned.

Equipment is selected & proposed per schedule on drawing #M-003 dated 03/31/2023 and specification section 236514.16 Part 2 dated 03/31/2023.

Clarifications/Deviations/Exceptions and/or other notes are as follows:

- Schedule on drawing #M-003 dated 03/31/2023 – CT-1
 - Proposed unit's spray pressure is 1.75 psi.
 - Note 1 – Panel by others.
 - Note 2 – Proposed unit has a 10 kW basin heater.
 - Note 3 – Water treatment system is not included and must be provided by the installing contractor.
 - Note 8 – Spring isolators not included and must be provided by the installing contractor.
- Specification Section 236514.16 Part 2 dated 03/31/2023
 - 2.1-H – Water treatment system not available from BAC and must be provided by the installing contractor.

BAC Acceptances & Prices Notes:

1. BAC's standard "Terms and Conditions of Sale" apply to this quotation and may be viewed at www.BaltimoreAircoil.com/terms.
 2. The prices in this quotation are firm for thirty (30) days, subject to receipt of a purchase order or copy of the quotation displaying an authorized signature of the buyer.
 3. Prices will remain firm provided the order is received released for fabrication and shipped within twelve (12) weeks of submission of the purchase order or signed quotation.
 4. If an order is released and shipment of the equipment is not accepted when it is produced, the price in effect twelve (12) weeks prior to the actual shipment date will apply.
 5. A purchase order must be issued to BAC c/o JMP for the cooling tower(s). A separate purchase order issued to JMP may be required for any field services (startup, training, etc.), if included. Contact your salesperson for PO breakout pricing.
- Order must be released to the factory for production within 30 days to honor quoted pricing.**

Subtotal For Above:

\$49,437.00

Item B - Factory Authorized Startup Supervision

Tag: CT-1

- 1 STARTUP COST - Factory authorized startup supervision by JMP - One day max during normal business hours

Subtotal For Above:

\$1,000.00

Item C - Boilers

- 1 FBN3001 - Lochinvar Crest Condensing Boiler natural gas fired with 3,000,000 Btu/Hr input, 2,883,000 Btu/Hr output. Condensing design with 96% AHRI Thermal Efficiency, 20:1

2920

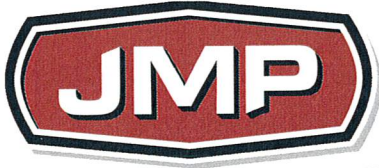
	Turndown, ASME Stainless Steel HX, 316L SS Fire Tubes, ASME relief valve		
1	100289582 - Condensate Neutralization Kit		
1	100338349 - K,MODULE,BACNET,GATEWAY		
1	100157681 - 4" 2-Way Motorized Isolation Valve (FB2500-5000)		
1	100269924 - Step Down Gas Regulator		
	Subtotal For Above:		\$54,701.00
	Item D - Pumps		
2	e1510-5GB-324T-L - B&G Base Mounted Pump Series e-1510, Model e-1510, 5GB, SS, 40 HP, 1800 RPM, 324T Frame, with 11.375" Impeller, STD-Buna/Carbon/Ceramic/SS/Bronze Seal, BG Choice, ODP, Nema Premium Efficient, 230/460v Motor, 895 gpm, 100 ft	2102	
2	e1510-5GB-256T-L - B&G Base Mounted Pump Series e-1510, Model e-1510, 5GB, SS, 20 HP, 1800 RPM, 256T Frame, with 13.5" Impeller, STD-Buna/Carbon/Ceramic/SS/Bronze Seal, BG Choice, TEFC, Nema Premium Efficient, 230/460v Motor, 895 gpm, 55 ft	1888	
	Subtotal For Above:		\$23,728.00
	Item D - Pumps FC's		
2	SMP8 - SMP Pump Saver, Stainless Steel Hose and Braid, 150# Steel Flanges, 8" x 12"	58	
2	SFCI15P5X8 - FlexHose SS Flex Connector with Concentric Reducer, 5 inch x 8 inch ID x 18 inch OAL, Flanged Connection	112	
2	SMP8 - SMP Pump Saver, Stainless Steel Hose and Braid, 150# Steel Flanges, 8" x 12"	58	
2	SFCI15P5X8 - FlexHose SS Flex Connector with Concentric Reducer, 5 inch x 8 inch ID x 18 inch OAL, Flanged Connection	112	
	Subtotal For Above:		\$4,736.00
	Item D - Pumps HFK		
2	HFGK-1510L-005 - Hyfab Gauge Kit Includes Pressure Gauge, Piping, And Accessories, 0.25" Gauge Ports, -30" HG - 100psig Range, (HFGK-1510L & PLF4098L005)		
2	HFGK-1510L-005 - Hyfab Gauge Kit Includes Pressure Gauge, Piping, And Accessories, 0.25" Gauge Ports, -30" HG - 100psig Range, (HFGK-1510L & PLF4098L005)		
	Subtotal For Above:		\$832.00
	Item D - Pumps SD's		
2	115126 - Bell and Gossett HG-3X Suction Diffuser Plus 8" FLG x 6" FLG	300	
2	115126 - Bell and Gossett HG-3X Suction Diffuser Plus 8" FLG x 6" FLG	300	
	Subtotal For Above:		\$3,820.00
	Item D - Pumps TDV's		
2	132125 - Bell and Gossett 3DS-5S 5" Triple Duty Valve Straight Pattern	236	

2	132125 - Bell and Gossett 3DS-5S 5" Triple Duty Valve Straight Pattern	236	
	Subtotal For Above:		\$5,720.00
	Item D - Pumps VFD's		
2	177U9660 - FC 102 VFD, 40HP, 460/3, NEMA 1 Vertical, Main Disconnect and Drive Fusing, 3 Contactor, EMB2 Bypass, 100kA SCCR	212	
2	177U9545 - FC 102 VFD, 20HP, 460/3, NEMA 1 Vertical, Main Disconnect and Drive Fusing, 3 Contactor, EMB2 Bypass, 100kA SCCR	168	
	Subtotal For Above:		\$13,470.00
	Item E - Air Control		
1	5360-08F-12-003 - Bell and Gossett R-8F Flanged Rolairtrol Air Separator w/strainer	458	
1	5358-002-00-002 - 5358-002-00-002 MBV-3L 3"SRS/ROL BLOWDOWN VALVE		
	Tag: Note: Contractor to confirm size of expansion tank		
1	116052 - Series B, Model B300 ASME Bladder Tank, 80 Gallons, 125PSI	90	
1	113021 - Bell and Gossett 87 Air Vent 0.50F x 0.75M	1	
1	113076 - Bell and Gossett 107A High Capacity Air Vent 0.75"	10	
1	MUA100-N-100-125-R - Hyfab Make Up Assembly, 1" System Connections, 1" Relief Valve with Apollo 1" RPZ Backflow with Air Gap (MUA100-N, 110135, 4ALF-205-A2F, AGD4A1, 091603x2)		
1	113233 - TPV-3/4FM TANK PURGE VALVE	1	
	Subtotal For Above:		\$7,644.00
	Item F - WSHPs		
1	BSDP CLIMATEMASTER - 92 Climatemaster horizontal TC series WSHPs, 1.5 ton to 5 ton; 265/1 or 460/3; CXM2 controls with multiprotocol controller and disconnect; ultraquiet; polymer drain pan; PSC motor; wall sensor with digital display, setpoint adjustment, and override		
	Contractor to confirm voltage, handings, and quantities before submitting.		
	Subtotal For Above:		\$246,905.00
	Item G - Valve kits for WSHPs		
16	SK2A-3 - IMI Flow Design 1" 2-WAY Standard Coil Kit models AC autoflow balancing valve, UP union with air vent & P/T port, and YC Strainer with blowdown	176	
32	H36-100MM - H3 1.0 X 36" SS Braided Hose Brass (2 required)		
76	SK2A-4 - IMI Flow Design 1.25" 2-WAY Standard Coil Kit models AC autoflow balancing valve, UP union with air vent & P/T port, and YC Strainer with blowdown	912	
152	H36-125MM - H3 1.25 X 36" SS Braided Hose Brass (2 required)		
	Subtotal For Above:		\$41,156.00

	<p>Item H - Heat Exchanger</p> <p>Tag: HX-1</p> <p>1 P21 - B&G Model - AP21 Plate Heat Exchanger - Consisting of 0mm frame with 0.4 mm AISI304 TK heat transfer plates and NITRILE HT gaskets, STL header plates, SS carry bar, SS guide bar, OSHA approved ALUMINUM splash guard, " 4" steel studded port for 150# ansi flange (Hot side). " 4" steel studded port for 150# ansi flange (Cold side). ASME construction with U1 stamp for 150 design pressure.</p>	<p>1227</p>	<p>\$14,835.00</p>
	<p>Subtotal For Above:</p>		<p>\$14,835.00</p>
	<p>TOTAL PRICE FOR ABOVE EQUIPMENT:</p>		<p>\$467,984.00</p>

Thanks,
Christian Phillips

Order must be released to the factory for production within 30 days to honor quoted pricing



JMP Equipment Company, LLC

Heating, Cooling, and Plumbing Representatives
since 1958

www.jmpco.com

Quotation No. MQ-64375

JMP Equipment Company, LLC	Bid Date	6/22/2023
Phone: 800-365-9010	Date:	12/6/2023
Email: briang@jmpco.com	Job:	Tucker Middle School HVAC Replacement
		Tucker, GA
	Engineer:	GTP Consulting Engineers

We are pleased to quote you on the following equipment for the above job subject to approval. Quantities listed are not guaranteed and should be verified. Prices will be adjusted accordingly. This quotation is subject to change without notice and void after 30 days unless otherwise stated below. All Contracts or Orders are subject to acceptance by the Company and are contingent upon non-occurrence of strikes or other delays beyond their control. In addition to prices named herein, you are to pay any applicable sales taxes.

QTY	Description & Group	Total WT (lbs)	Price Each	Total Net Price
	Item A - Updated Heat Exchanger			
	<u>Tag: HX-1</u>			
1	Item Not in FO - B&G Model - AP55 Plate Heat Exchanger - Consisting of 0mm frame with 0.4 mm AISI304 XKXM heat transfer plates and NITRILE HT gaskets, STL header plates, SS carry bar, SS guide bar, OSHA approved ALUMINUM splash guard, " 4" steel studded port for 150# ansi flange (Hot side). " 4" steel studded port for 150# ansi flange (Cold side). ASME construction with U1 stamp for 150 design pressure. Includes 20% Extra plate capacity, 316 SS Safety Shield, Insulation Blanket, Automatic Backflush System	3166	\$47,848.00	\$47,848.00
	Subtotal For Above:			\$47,848.00
	TOTAL PRICE FOR ABOVE EQUIPMENT:			\$47,848.00

Thanks,
Allison Wingard

Evergreen Construction
 3200 Cobb Galleria Parkway, Suite 240
 Atlanta, Georgia 30339
 Phone: 678 244 6500

Project: 2023-016 - Tucker Middle School
 2160 Idlewood Road
 Tucker, Georgia 30084

Prime Contract Potential Change Order #IOC-003: RFI #003 - Controls Valves

TO:	The DeKalb County Board of Education 1701 Mountain Industrial Blvd Stone Mountain, Georgia 30083	FROM:	Evergreen Construction 3200 Cobb Galleria Parkway, Suite 240 Atlanta, Georgia 30339
PCO NUMBER/REVISION:	IOC-003 / 0	CONTRACT:	2023-016 - Tucker Middle School, HVAC and Controls Replacement
REQUEST RECEIVED FROM:		CREATED BY:	Jorge Orobigt (Evergreen Construction)
STATUS:	Pending - In Review	CREATED DATE:	6/12/2024
REFERENCE:	RFI -003, Email Official Response RFI-003 Email	PRIME CONTRACT CHANGE ORDER:	#001 - PCO's Incl: IOC-001, ICO-002, ICO-003
FIELD CHANGE:	No		
LOCATION:		ACCOUNTING METHOD:	Amount Based
SCHEDULE IMPACT:	0 days	PAID IN FULL:	No
EXECUTED:	No	SIGNED CHANGE ORDER RECEIVED DATE:	
		TOTAL AMOUNT:	\$26,883.00

POTENTIAL CHANGE ORDER TITLE: RFI #003 - Controls Valves

CHANGE REASON: Design Development

POTENTIAL CHANGE ORDER DESCRIPTION: *(The Contract Is Changed As Follows)*
 RFI #003 - Controls Valves

Please refer to the Cover Letter for a detailed scope of work.

ATTACHMENTS:

#	Budget Code	Description	Amount
1	15-99-100.S H.V.A.C..Subcontract	Installation of Control Valves	\$0.00
2	15-99-200.S HVAC Controls.Subcontract	Furnish Control Valves per RFI #003	\$24,900.00
3	01-04-100.L Project Super./Mngmnt. Team.Labor	Managerial Processing	\$95.00
4	01-04-130.L Project/Office Engineer.Labor	As-builts Drawings	\$29.00
Subtotal:			\$25,024.00
Payroll Taxes & Insurance (≈ 35.48% Applies to Labor.):			\$44.00
Subcontractor General Liability Insurance (≈ 0.35% Applies to Subcontract.):			\$86.00
Pollution Insurance (≈ 0.08% Applies to all line item types.):			\$21.00
Builders Risk Insurance.Materials (≈ 0.16% Applies to all line item types.):			\$39.00
Management Software (≈ 0.24% Applies to all line item types.):			\$60.00
Subcontractor Default Insurance (≈ 1.28% Applies to all line item types.):			\$321.00
Bond (0.00% Applies to all line item types.):			\$0.00
EVERGREEN Markup Self-Perform (≈ 9.99% Applies to Equipment, Materials, Labor, Other, and Labor Burden.):			\$17.00
EVERGREEN Markup Subcontract (5.00% Applies to Subcontract.):			\$1,271.00
Grand Total:			\$26,883.00



PCO #IOC-003

Neal Ridgel (Epsten Group)
101 Marietta Street NW Suite 2600
Georgia 30303

The DeKalb County Board of Education
1701 Mountain Industrial Blvd
Stone Mountain, Georgia 30083

Evergreen Construction
3200 Cobb Galleria Parkway, Suite 240
Atlanta, Georgia 30339

SIGNATURE DATE

SIGNATURE DATE

SIGNATURE DATE



May 13, 2024

Mr. Donta Collins
Dekalb County School District
1780 Montreal Road
Tucker, GA

RE: Tucker Middle School, HVAC and Controls Replacement
IOC #003 – RFI #003 - Controls - Valves

Dear Donta:

Attached please find our proposal for the revisions associated with the response to RFI #003 - Controls - Valves. Per the response, a bypass valve was not specified for the water-source heat pump loops, so the MEP engineer issued new drawings indicating the location of bypass valves. Enclosed is our detailed breakdown and back-up associated with this response to RFI #003 - Controls - Valves.

This Item of Change (I.O.C. 003) results in an add cost of **\$26,883.00** to the current contract value. Please note that this change does not include or account for material escalation/expediting should the work be impacted due to unforeseen schedule impacts.

Should you have any questions or need any additional information, please do not hesitate to contact me directly at 678-244-6550.

Sincerely:

A handwritten signature in black ink, appearing to read "Zack DeGrendel", written in a cursive style.

Zack DeGrendel
Project Manager

Enclosure(s)

cc: Steve Hall – Evergreen

ITEM OF CHANGE

Project Name: Tucker Middle School - HVAC Replacement
 Location: 2160 Idlewood Road, Tucker, GA. 30084
 Architect: EpstenGroup
 Description of Change: RFI #003 - Controls - Valves

I.O.C. No. 003
 Date: 5/13/2024
 Evergreen Job No. 2023-00

CODE	DESCRIPTION	QUAN.	U.M.	MATERIAL COST		LABOR COST		SUB COST	
				\$/UNIT	PRICE	\$/UNIT	PRICE	\$/UNIT	PRICE
15.99.100	HVAC				0		0		0
	Installation of Control Valves	1	LS		0		0	0.00	0
					0		0		0
15.99.200	Controls				0		0		0
	Furnish Control Valves per RFI #003	1	LS		0		0	24900.00	24,900
					0		0		0
01-06.700	LAYOUT & SURVEY	0	MHR		0	173	0		0
01-16.100	DRAWINGS AND PRINTING	0	LS		0.00		0		0
01-22.100	TRAFFIC CONTROL	0	MHR		0	25	0		0
01-26.420	BARRICADES	0	LS	1500	0		0		0
01-26.610	TEMPORARY PROTECTION	0	SF	0.5	0	0.75	0		0
01-30.100	CONTINUOUS CLEAN-UP	0	MHR		0	25	0		0
01-30.400	DUMPSTERS	0	PULL	985	0		0		0
01-99.100	EQUIPMENT RENTAL	0	LS		0		0		0
01-99.200	QUALITY CONTROL	0	MHR		0	110	0		0
01-99.300	MANAGERIAL PROCESSING	1	MHR		0	95	95		0
01-99.500	AS-BUILT DRAWINGS	1	MHR		0	28.5	29		0
01-99.700	SMALL TOOLS / MISC. MATERIALS	0	LS	150	0		0		0
02-01.010	EROSION CONTROL	0	LS	1000	0	650	0		0
	SUBTOTAL				0		124		24,900
	Payroll Taxes & Insurance						44		
	Sales Tax (8.00%)				0				
	TOTALS				0		167		24,900
	Subcontractor General Liability Insurance				0		1		85
	Pollution Insurance				0		0		21
	Builder's Risk Insurance Premium				0		0		39
	Management Software				0		0		60
	Subcontractor Default Insurance				0		2		319
	EVERGREEN MARKUP				-		17		1,271
	GRAND TOTAL								\$26,883

Authorizing Signature: _____

date: _____

RFI #3: Controls - Valves

Status	Open		
To	Craig Goldstein (GTP Engineering & Consultants)	From	Dylan Conley-Keck (Evergreen Construction)
Date Initiated	Mar 1, 2024	Due Date	Mar 4, 2024
Location		Project Stage	Course of Construction
Cost Impact	TBD	Schedule Impact	
Spec Section	230923 - Direct-Digital Control System for HVAC		
Drawing Number	M-602	Reference	
Linked Drawings			
Received From	Brad Blanton (Control Concepts, Inc.)		
Copies To	Steve Hall (Evergreen Construction), Emilie Hayes (Evergreen Construction), Neal Ridgel (Epsten Group)		
Priority	1 - High	Discipline	Mechanical

Activity

Question

Question from Dylan Conley-Keck Evergreen Construction on Friday, Mar 1, 2024 at 09:38 AM EST

Description:

The following details depict the water-source heat pump's assembly and controls:

Detail: 5/M-602

Detail: 2/M-704

Two way valves are provided per the project specifications. However, there is no bypass valve on the loop. There is no way to maintain minimum flow if all isolation valves are closed. A bypass valve installed at a location along the loop would provide for redundancy in this scenario. Alternatively, in order to meet minimum flow, 3-way valves can be provided at unites selected by the engineer to provide for redundancy.

The following details depict the cooling tower assembly and controls:

Detail: 2/M-602

Detail: 1/M-702

The details provided do not provide a location or size for an isolation valve for the cooling tower plant. Confirm if an isolation valve is needed, and provide sizing and location for this valve.

Question:

Provide appropriate design recommendation for either the single bypass valve, and provide valve sizing and location, or provide valve sizing and units for proposed 3-way valves.

Confirm if isolation valve is needed Provide sizing and location for cooling tower isolation valve.

Attachments

[Tucker - RFI #003 - Valve Schedule.pdf](#)

Awaiting an Official Response

Control Concepts

Plant Control Valves

PROJECT NAME		JOB NUMBER										REV	DATE	
Tucker Middle School - MBSR		623264										0	2/8/2024	
CONTROL VALVE												SYSTEM CAPACITY		
IDENTIFICATION	QTY	Line Size	VALVE THREAD SIZE	Valve Operation Direction	FAIL POSITION TO COIL	BODY TYPE	PRODUCT NUMBER Actuator/Valve Body	Clip Position	Primary Voltage	Power Req (VA)	MAX. CLOSE-OFF PRESSURE	CV	DESIGN GPM (PPH)	PRESS DROP PSI
Bypass Valves				Note-5	Note-6									
V-1 CT Bypass	1	8"	8"	NO	FL	3-Way Butterfly	F7200L+PRBUP-MFT-T-200	N/A	120 VAC	23	200	3136	895	0.081
V-2 CT Iso	1	10"	10"	NO	FL	2-Way Butterfly	F6250L+PRBUP-3-T-250	N/A	120 VAC	23	200	5340	895	0.028

GENERAL NOTES

1. Water system control valves sized on basis of 3 PSI Maximum Pressure drop.
2. Steam system control valves sized on basis of 15 PSI initial steam pressure with maximum pressure drop of 12 PSI.
3. FPT- Female Pipe Thread Connection. Flange-Flanged Connection
4. All control valves and wells shall be installed by the heating contractor according to Control Concepts LLC. ATC drawings.
5. NC-0% Actuator Call produces a Closed Valve. NO- 0% Actuator Call produces an Open Valve.
6. FC-Fall Closed on power loss to actuator. FO-Fall Open on power loss to actuator. FL-Fall In Last Position on power loss to actuator.

Valve sizing and part number pending on RFI

Reference RFI - #3

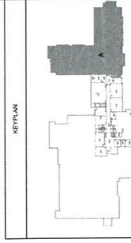
See attached drawings for bypass valves and locations for the water-source heat pump loop.

See M-401 for revised cooling tower detail.

Chris Wong
3/11/2024

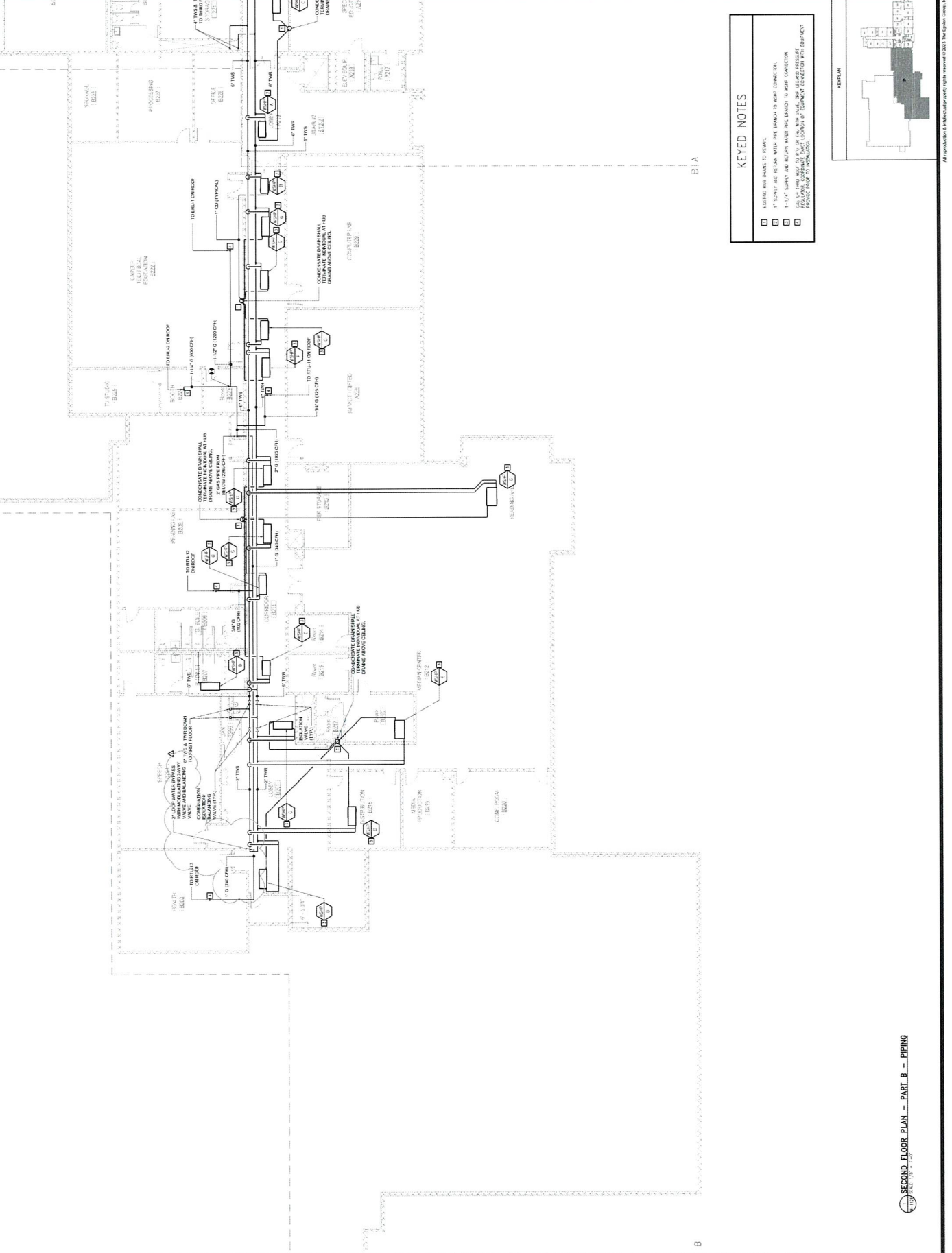
KEYED NOTES

- EXISTING RISERS TO REMAIN
- 1" SUPPLY AND RETURN WATER PIPE BRINGS TO ROOF COLLECTION
- 1-1/4" SUPPLY AND RETURN WATER PIPE BRINGS TO ROOF COLLECTION



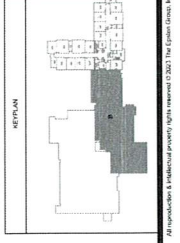
SECOND FLOOR PLAN - PART A - PIPING

© 2024 Epstengroup, Inc. All rights reserved. Epstengroup, Inc. is a registered trademark of Epstengroup, Inc.



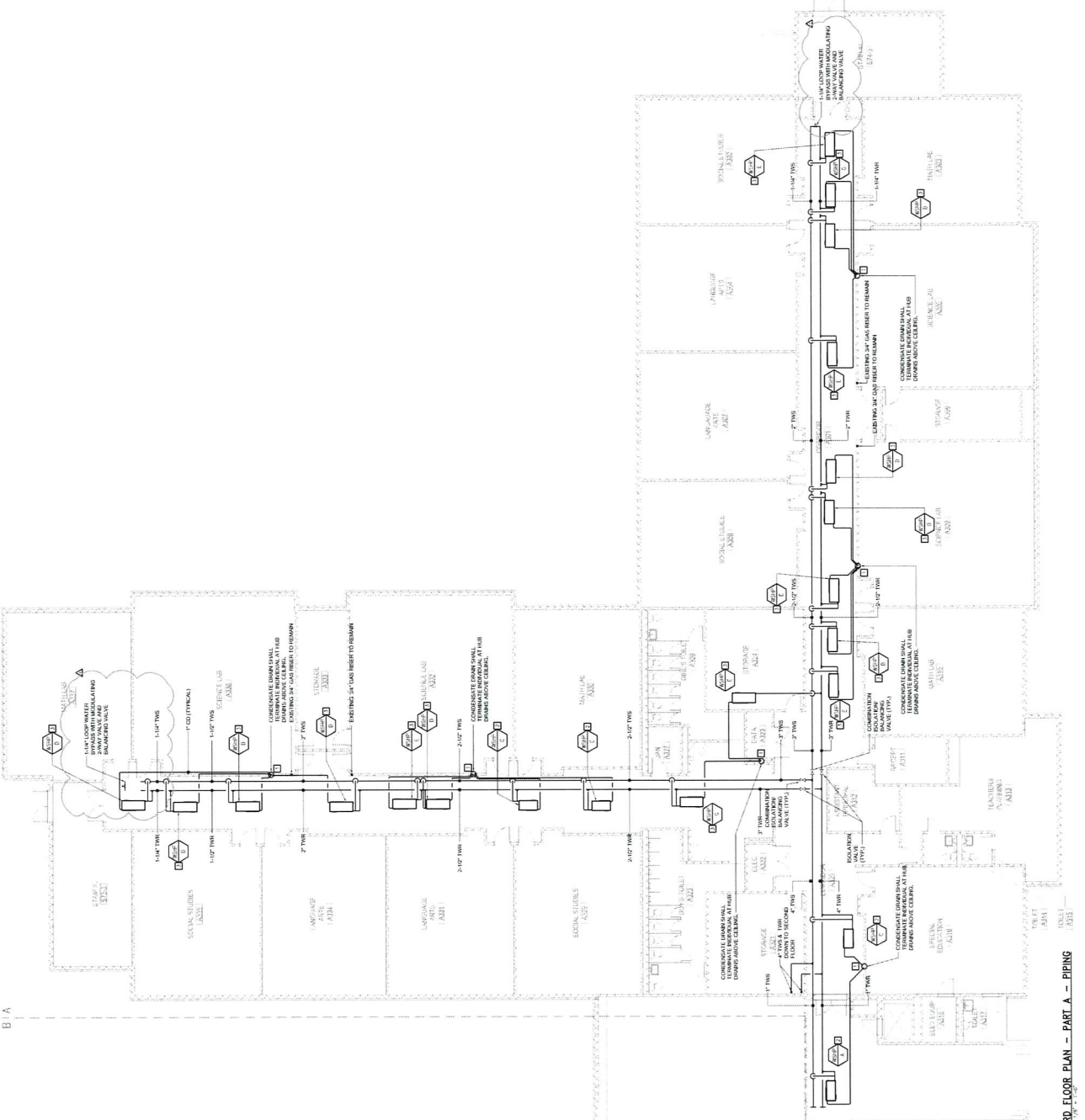
KEYED NOTES

- EXISTING PIPING TO REMAIN
- 1" DUCTY AND RETURN WITH PIPE BRANCH TO UNIT CONNECTION
- 1-1/2" SUPPLY AND RETURN WITH PIPE BRANCH TO UNIT CONNECTION
- 1-1/2" SUPPLY AND RETURN WITH PIPE BRANCH TO UNIT CONNECTION
- 1-1/2" SUPPLY AND RETURN WITH PIPE BRANCH TO UNIT CONNECTION



KEYED NOTES

- EXISTING (AS SHOWN TO REMAIN)
- 1" SUPPLY AND RETURN, WHEN PIPE BRANCH TO NEW CONNECTION
- 1.5" SUPPLY AND RETURN, WHEN PIPE BRANCH TO ASHP CONNECTION



RETURN

THIRD FLOOR PLAN - PART A - PIPING

All specifications & technical details apply to the project. © 2023 The Epstengroup, Inc.

KEYED NOTES

- 1 PROVIDE AND INSTALL WATER METER ON GAS SERVICE COORDINATE INSTALLATION WITH COMPLETION CONTRACTOR.
- 2 COORDINATE WITH OWNER.
- 3 RECONNECT EXISTING DUCTWORK TO NEW AIR DISTRIBUTION SYSTEM.
- 4 PROVIDE AND INSTALL EXISTING DUCTWORK TO NEW AIR DISTRIBUTION SYSTEM.
- 5 PROVIDE AND INSTALL EXISTING DUCTWORK TO NEW AIR DISTRIBUTION SYSTEM.
- 6 PROVIDE AND INSTALL EXISTING DUCTWORK TO NEW AIR DISTRIBUTION SYSTEM.
- 7 PROVIDE AND INSTALL EXISTING DUCTWORK TO NEW AIR DISTRIBUTION SYSTEM.
- 8 PROVIDE AND INSTALL EXISTING DUCTWORK TO NEW AIR DISTRIBUTION SYSTEM.
- 9 PROVIDE AND INSTALL EXISTING DUCTWORK TO NEW AIR DISTRIBUTION SYSTEM.
- 10 PROVIDE AND INSTALL EXISTING DUCTWORK TO NEW AIR DISTRIBUTION SYSTEM.



ARCHITECT:
101 MARBETTA STREET NW
SUITE 2600
ATLANTA, GA 30303
404.577.0370 (O)

OWNER:
DEKALB COUNTY
SCHOOL SYSTEM
#30521-0605



CONSULTANT PROJECT LEAD:
GTP
Consulting Engineers
1000 Peachtree Street, NE
Atlanta, GA 30309
404.522.2271

CONTRACTOR:
H.K.S.E.
1000 Peachtree Street, NE
Atlanta, GA 30309
404.522.2271

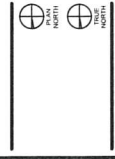
PALACIO COLLABORATIVE
1000 Peachtree Street, NE
Atlanta, GA 30309
404.522.2271

DO NOT SCALE DIMENSIONS FROM THIS PLAN. DIMENSIONS SHALL BE TAKEN FROM THE PROJECT DOCUMENTS. ALL DIMENSIONS SHALL BE TAKEN FROM THE PROJECT DOCUMENTS. ALL DIMENSIONS SHALL BE TAKEN FROM THE PROJECT DOCUMENTS.

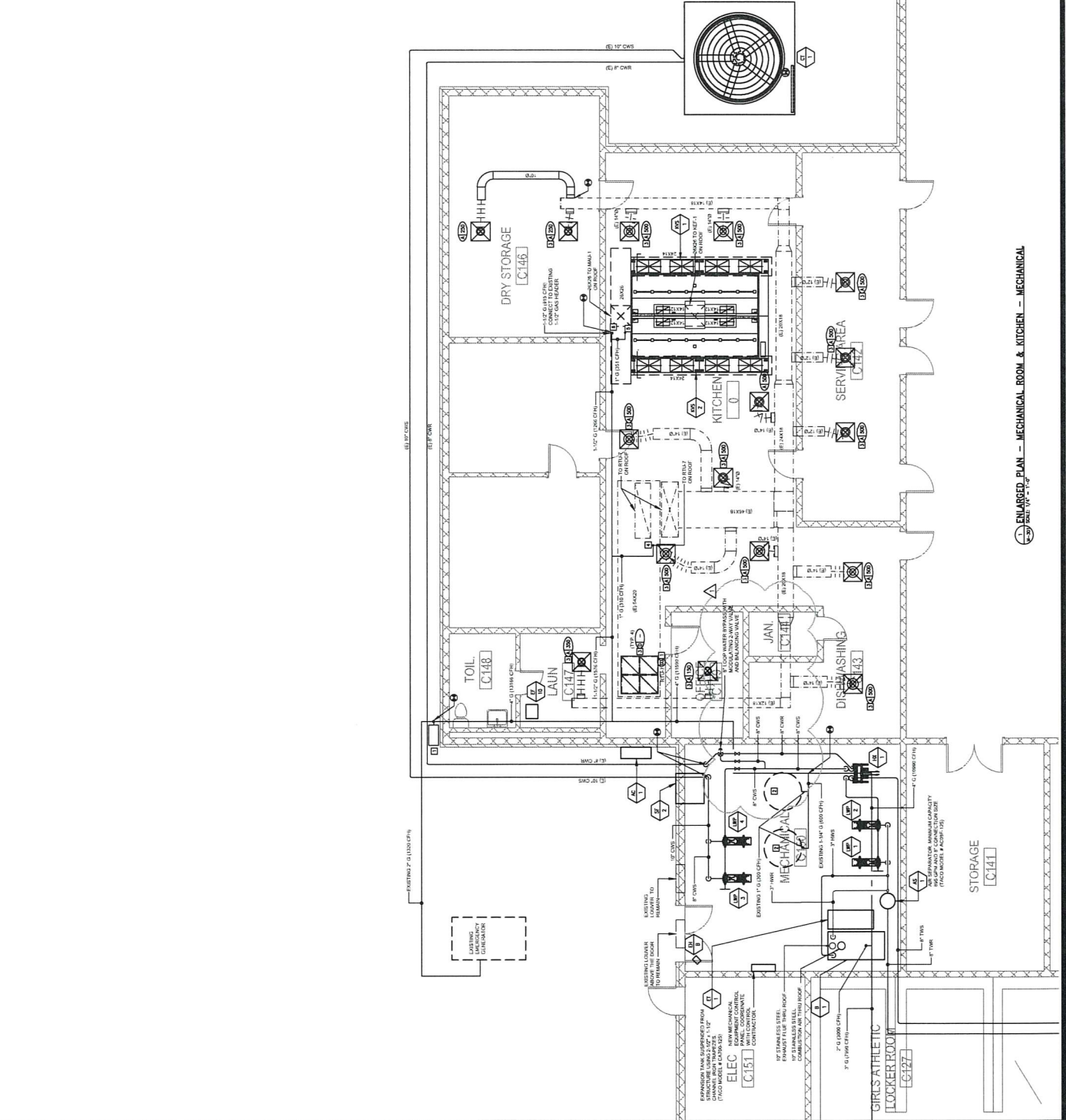
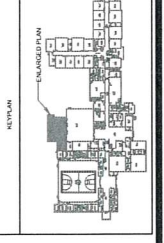
REV.	DATE	DESCRIPTION
1	11/13/2024	ISSUED FOR CONSTRUCTION

PROJECT:
TUCKER MIDDLE SCHOOL - HVAC REPLACEMENT
2160 IDLEWOOD ROAD, TUCKER, GA. 30084

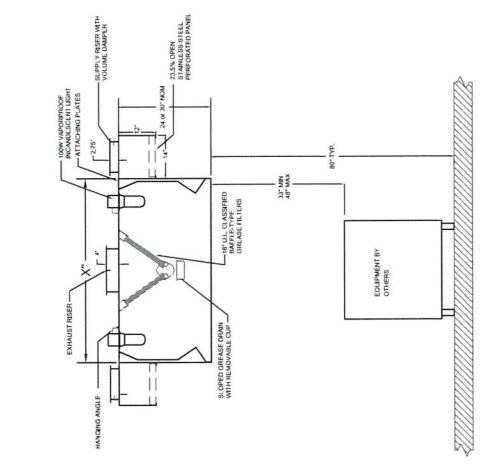
PROJECT ISSUE DATE: 03/13/2024
PROJECT: 2160 IDLEWOOD ROAD, TUCKER, GA. 30084
SHEET TITLE: ENLARGED PLAN - MECHANICAL



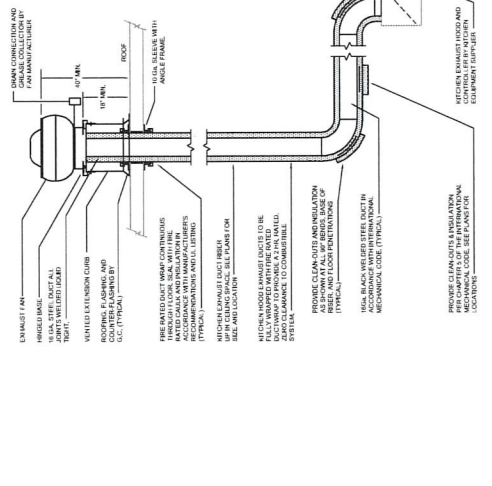
M-401



ENLARGED PLAN - MECHANICAL ROOM & KITCHEN - MECHANICAL
SCALE: 1/8" = 1'-0"



- TYPICAL KITCHEN EXHAUST NOTES**
1. SEE PLAN FOR LOCATIONS, SIZES & ROUTING.
 2. EITHER MECH EXHAUST SYSTEM SHALL BE INSTALLED THROUGH ROOF OR THROUGH EXTERIOR WALL, WITH THE EXHAUST SYSTEM MECHANICAL CODE AND THE 1990 INTERNATIONAL MECHANICAL CODE.
 3. CLEANOUTS AND ACCESS DOORS SHALL MAINTAIN THE SYSTEM'S INTEGRITY AND BE ACCESSIBLE FROM THE MECH ROOM.
 4. SYSTEM SHALL BE INSTALLED IN ACCORDANCE WITH THE 1990 INTERNATIONAL MECHANICAL CODE AND THE 1990 INTERNATIONAL MECHANICAL CODE.



TYPICAL HOOD SECTION VIEW
SCALE: NOT TO SCALE

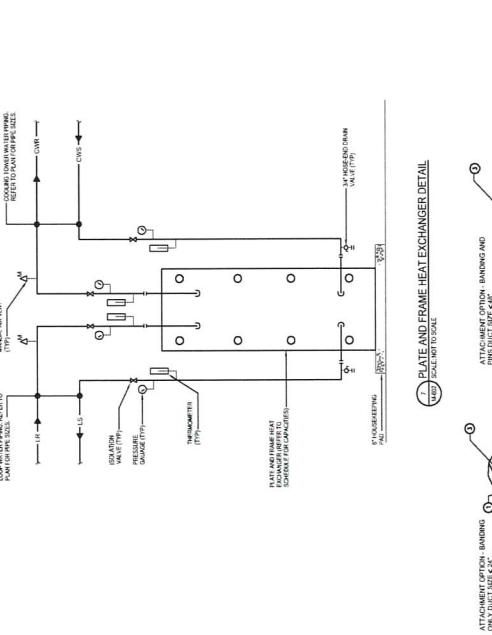
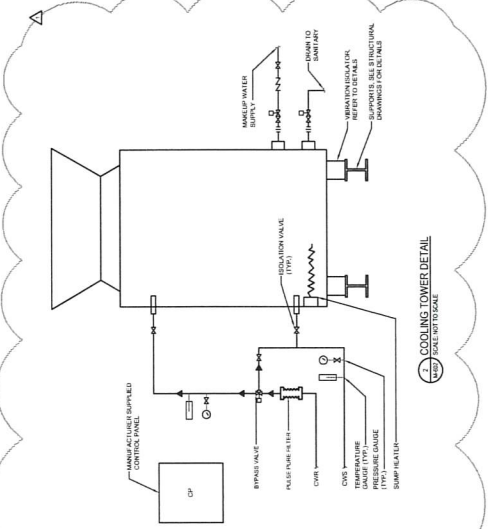
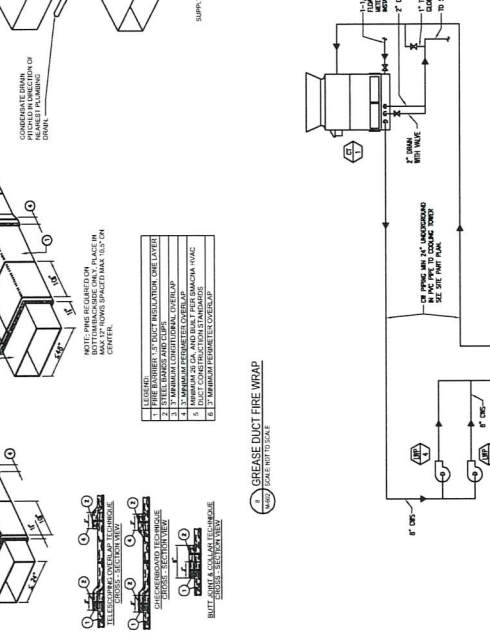


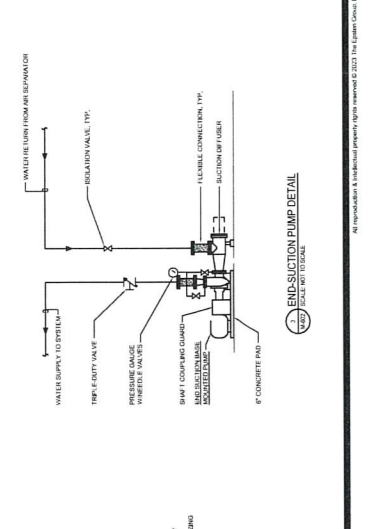
PLATE AND FRAME HEAT EXCHANGER DETAIL
SCALE: NOT TO SCALE



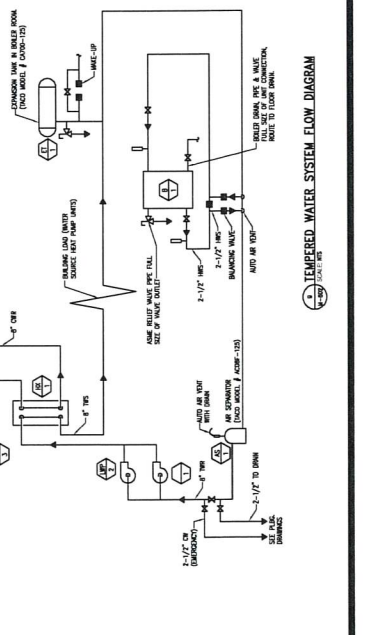
TYPICAL WATER SOURCE HEAT PUMP DETAIL
SCALE: NOT TO SCALE



TEMPERED WATER SYSTEM FLOW DIAGRAM
SCALE: NOT TO SCALE



COOLING TOWER DETAIL
SCALE: NOT TO SCALE



END-SUCTION PUMP DETAIL
SCALE: NOT TO SCALE



CONTROL CONCEPTS, LLC

3550 North Pkwy, Suite 100

Cumming, GA 30040

Ofc: (770) 888-0181

DATE: March 28, 2024

TO: **Mr. CHARLES ADAMS**
EVERGREEN CONSTRUCTION
Assistant Project Manager
3200 Cobb Galleria Pkwy, Suite 240
Atlanta, GA 30339
o: 678.244.6556
c: 678.860.1147
email: cadams@evergreencorp.com

PROJECT: **TUCKER MIDDLE SCHOOL – HVAC REPLACEMENT**
DEKALB COUNTY BOARD OF EDUCATION
RFP No. 23-752-026
DCSD Project: 30521-0605
2160 Idlewood Road
Tucker, GA 30084
Automatic Temperature Controls
Proposal #: 23-JM-206: CO RFI #03

CCI is in receipt of email from Evergreen Construction on 3/27/24 regarding RFI #003. As requested, Control Concepts, LLC. (CCI) is pleased to quote the following change order to our contract. The following are clarifications to our proposal:

Under this Change Order, CCI shall provide:

1. Furnish an additional eight (8) 2-way modulating WSHP loop bypass valves.
 - Valves to be installed by MC and connected to DDC system by CCI.
 - Six (6) 1 ¼" valves
 - One (1) 1 ½" valve
 - One (1) 2" valve
2. Furnish one (1) 8" 3-way bypass valve for Cooling Tower.
 - Valves to be installed by MC and connected to DDC system by CCI.
3. Furnish one (1) 10" 2-way Cooling Tower Isolation valve.
 - Valve to be installed by MC and connected to DDC system by CCI.
4. Engineering for additional valves is included within this change order.

CLARIFICATIONS FOR THIS PROPOSAL (indicated with):

1. All work is to be provided during normal work hours.
2. All low voltage control wiring above lay-in ceilings and inside sheetrock walls to be installed as plenum cable not in conduit. Exposed control wiring (i.e., mechanical rooms) and wiring inside block walls to be in conduit. Concrete walls will require surface mounted raceways. Wiring installed outside and potentially exposed to damage will be run in conduit.
3. Labor, material, engineering, and startup for equipment provided by CCI has been included.
4. One (1) year warranty on parts and workmanship is included.
5. Buy American considerations are included.
6. Custom color graphics will be created for each piece of equipment controlled or monitored by CCI.
7. OCIP/CCIP insurance.
 - OCIP/CCIP insurance has been Excluded. If OCIP/CCIP is a requirement, we can provide alternate pricing for the administrative costs.

CONTROL CONCEPTS, LLC
3550 North Parkway, Suite 100
Cumming, GA 30040

This document is a strictly confidential communication
to and solely for the use of the recipient and may not be
reproduced or circulated without Control Concepts, LLC prior written consent

RFP No. 23-752-026
23-JM-206
Page 1 of 5

- OCIP/CCIP insurance has been Included.
8. Unless specifically noted, control dampers are not included in CCI's scope of work. CCI will provide the actuators for the dampers. We assume that the actuator will mount/direct couple to the shaft of the damper provided by others. Our scope does not include any shaft extensions or adaptor plates.
9. Purchase Order:
- CCI requires a Purchase Order (PO) or Notification to Proceed (NTP) in advance of commencing any work for a project. The Lead Time for projects not requiring a Controls Submittal is Two (2) weeks in advance of commencing work which includes mobilization. In the event the Customer requests reducing the stated lead time, Control Concepts will provide the additional costs related to acceleration of the schedule and will require written approval of these costs before proceeding.
- Complete engineered submittals and as-built documentation are included. CCI requires a Purchase Order (PO) or Notification to Proceed (NTP) in advance of commencing any work for a project. Projects requiring Controls Submittals require detailed coordination with other Trades. Depending on the scope of the project, the Controls Submittal cannot begin until we have been provided the related approved submittals (which must include wiring diagrams) by the other trades. In many cases, the lead time for Controls Submittals is Eight (8) weeks after receipt of authorization to proceed and the receipt of the approved submittals (including the wiring diagrams) from the other trades. In the event the Customer requests reducing the stated lead time, additional costs may apply.
10. Liquidated Damages:
- No claim for liquidated or actual damages can be made against Control Concepts (CCI) unless it is proven that CCI is the sole cause of the delay or impact to the critical path of the project. CCI's cost basis at the time of the proposal was derived from the scope of work and project schedule that included completion of critical path items by others and a duration of time for our scope to follow. Should the schedule change (acceleration, compression, or delay), CCI will evaluate and advise of any cost impact via a change order.
11. Project Pricing Considerations:
- In no event shall Control Concepts (CCI) be liable for:
- (a) Price increases in material or equipment as a result of delays not solely caused by CCI.
- (b) Delays or price increases resulting from material or equipment shortages in the supply chain.
- In such event, Control Concepts shall request and be entitled to a Change Order for any changes in the Contract Sum and Contract schedule.
12. COMMISSIONING/3rd Party Commissioning:
- Unless specifically noted, No Allocation of Hours have been included for any commissioning assistance. If commissioning assistance is required, a quote based on required hours can be provided at that time. Contractor specific commissioning/CCI assistance is not included.
- CCI has included xx hours for commissioning assistance. If commissioning assistance is required over this allocation, we can provide additional pricing.
- 3rd Party commissioning assistance is not included. Please add \$xx,xxx.00 if 3rd party commissioning is required.
13. For coordination of the VRF systems, Mechanical contractor shall provide all required documentation that is necessary to correlate VRF units; which shall include controller addresses; and Room Numbers before CCI can proceed with integrating the system.
14. If factory controls are provided by the Equipment Manufacturer (HVAC/Lighting/etc.), Control Concepts assumes the factory provided controls will meet the intent of the contract documents, including the Sequence of Operation. CCI excludes supplemental control components, engineering, commissioning assistance and/or programming required to comply with any deficiencies of factory provided controllers. Before CCI begins the integration process, any factory provided controllers must be programmed, commissioned, addressed; all BACnet points exposed and made available to CCI.
15. Building Information Modeling (BIM)
- Building Information Modeling (BIM) work has been excluded. Coordination and support for the project BIM modeling Team can be added for an additional fee after determining the resources required.
- Coordination and support for the project BIM modeling Team has been Included.

EXCLUSIONS FROM THIS PROPOSAL (indicated with):

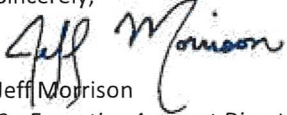
16. Water piping penetrations and taps necessary to install control devices are not included. CCI will coordinate device locations with the Mechanical contractor. Installation of control devices (immersion sensors, flow sensors, flow switches, flow meters, control valves, etc.) by Mechanical contractor.
17. Unless specifically noted, control dampers are not included in CCI's scope of work.
18. Thermostat Rough-In
 - Thermostat rough-in, in concrete or block walls or rough-ins requiring a raceway is not included. Thermostat rough-in, in uninsulated sheet rock walls are included.
 - Rough-Ins are not included.
19. Wiring clean-up in the ceiling for open-ceiling areas is not shown to be required, and not included.
20. Lighting control is not included. The contract documents for BAS did not reference that integration was required. The lighting control appears to be provided, installed & commissioned by another Division.
21. Monitoring of Biosafety Cabinets and other Lab Equipment not shown on Mechanical plans or indicated above is not included.
22. Integration/monitoring of elevator system. If requested, CCI can provide a cost proposal.
23. Integration/monitoring of Nurse Call system. If requested, CCI can provide a cost proposal.
24. Integration/monitoring of Fire Alarm System. If requested, CCI can provide a cost proposal.
25. Mechanical indicating devices such as pressure gauges, thermometers, magnahelic gauges and other non-DDC monitored devices are not included.
26. Refrigerant Monitor. This is to be provided and installed by the others.
27. Cyber Security is not included. Unless specifically noted otherwise, any Cyber Security requirements pertaining to DOD Instruction 8500.01/8510.01 (or any other directive, federal or otherwise) are NOT INCLUDED and should be provided by others if required.
28. Patching, painting, and general handyman work associated with this project is not included.
29. All area and duct smoke detectors are to be provided and installed under fire alarm portion of the specifications and are not included in our proposal.
30. Smoke and fire/smoke dampers provided and installed by others.
31. Motor starters, variable frequency drives (VFD's), contactors or disconnects are not included.
32. Davis Bacon wage considerations are NOT included.
33. Performance & Payment bond is NOT included.
34. Standard trap primer valves by others. If requested, CCI can provide a cost proposal.
35. Domestic water metering and gas metering (Utilities). If requested, CCI can provide a cost proposal.
36. Any materials not provided by CCI shall be installed and wired by others.
37. Proof of full SARS-CoV-2/COVID vaccination for Control Concepts workers is not listed as a requirement on the Project. As such, considerations related to worker vaccination have not been included in cost, schedule or staffing requirements for the Project. Should Contractor or Owner require vaccination of workers at a future date, such a vaccination requirement would be a newly added or changed condition of the Subcontract for which equitable adjustment to price and schedule would be required. Further, to the extent that vaccination of workers is required at a future date, Contractor is hereby notified that Subcontractor will take commercially reasonable efforts to comply with the vaccine request and continue to take reasonable COVID precautions, but Subcontractor does not guarantee that all workers required to complete Subcontractor's work on the Project will be vaccinated.

OUR CHANGE ORDER PRICE: \$ 24,900.00

The above pricing is firm for 30 days.

The attached Terms and Conditions apply to this proposal.

Sincerely,



Jeff Morrison
Sr. Executive Account Director

CONTROL CONCEPTS, LLC.

Email: jmorrison@intreo.com

O: (770) 888-0181

D: (678) 341-2667

C: (770) 527-1732

AUTHORIZATION SIGNATURE

Signature below denotes approval of the scope, pricing, and terms of conditions of this proposal and authorizing Control Concepts, LLC to proceed with the execution of this project.

Proposal Accepted By:

Print Name

Signature

Title

Purchase Order Number

Date

CHANGE ORDER

TERMS AND CONDITIONS OF SALE

Rev. 2.19.20

1. **REMITTANCES** All invoices shall be due and payable upon receipt in United States currency, free of exchange, or any other charges, or as otherwise agreed upon and set forth in writing by Control Concepts LLC (hereinafter called "Seller"). The Customer, if so requested agrees to furnish Seller with all information including financial statements, necessary to make a proper credit appraisal. Refusal to supply information may cause this proposal to be withdrawn. Terms of payment originally granted are subject to the approval of continued credit status. Prices are subject to correction for error.
2. **PROPOSALS** are based upon straight-time labor. Any request by the Customer for overtime work shall be considered an extra. This proposal expires 30 days after its date, subject to the provisions of the first sentence of the paragraph below entitled "Acceptance of Terms."
3. **PROGRESS PAYMENTS** Seller reserves the right to invoice Customer monthly as the work progresses, for all materials delivered to the job site or to an off-site facility and for all work performed on-site and off-site. Engineering, drafting and other mobilization costs incurred prior to installation shall be included in Seller's initial invoice and be equal to fifteen percent (15%) of the contract price. Invoices are due upon receipt by Customer. If the Customer becomes overdue in any progress payment, Seller shall be entitled to suspend work, shall be entitled to interest at the annual rate of 18% or the maximum permitted by the State of Georgia; and, to avail itself of any other legal remedies. Seller shall also be entitled to interest on all amounts retained by Customer from progress payments or otherwise. Customer agrees that he will pay and/or reimburse Seller for all reasonable attorney's fees which are incurred by Seller in the collection of amounts due and payable hereunder.
4. **CANCELLATION AND SUSPENSION** Any contract resulting from this proposal is subject to cancellation or instructions to suspend work by the customer only upon agreement to pay Seller adjustment charge.
5. **TAXES** The amount of any future sales, use, occupancy, excise, or other tax, federal, state, or local which Seller hereafter shall be obligated legally to pay, either on its own behalf of the Customer or otherwise, with respect to the material covered by this proposal, shall be added to such prices and paid by the Customer.
6. **LOSS, DAMAGE OR DELAY** Seller shall not be liable for any loss, damage, or delay occasioned by any causes beyond Seller's control, including, but not limited to, governmental actions or orders, embargoes, strikes, differences with workmen, fires, floods, accidents, or transportation delays. **IN NO EVENT SHALL SELLER BE LIABLE FOR ANY CONSEQUENTIAL OR SPECIAL DAMAGES.**
7. **WARRANTY** Seller warrants that the services furnished by it and covered by this proposal are free from defects workmanship under normal service and, without charge, equipment found to be so defective in material or workmanship will be repaired or replaced, if written notice of failure is received by Seller within one (1) year after date of installation, provided said equipment has been operated in accordance with Seller's instructions and provided such defects are not due to abuse, fire or decomposition by chemical or galvanic action. **SELLER HAS NOT MADE AND DOES NOT MAKE ANY WARRANTY OR REPRESENTATION WHATSOEVER, EITHER EXPRESS OR IMPLIED, AS TO THE FITNESS, CONDITION, MERCHANTABILITY, DESIGN OR OPERATION OF EQUIPMENT AND PARTS, THEIR FITNESS FOR ANY PARTICULAR PURPOSE, THE QUALITY OR CAPACITY OF THE MATERIALS IN OR WORKMANSHIP IN EQUIPMENT AND PARTS, NOR ANY OTHER REPRESENTATION OR WARRANTY WHATSOEVER.** Seller assumes no responsibility for repairs made on Seller's equipment unless done by Seller's authorized personnel, or by written authority from Seller. Seller makes no guarantee with respect to material not manufactured by it.
8. **PURCHASER'S REMEDIES** The Customer's remedies with respect to equipment found to be defective in material or workmanship shall be limited exclusively to the right of repair or replacement of such defective equipment. **IN NO EVENT SHALL SELLER BE LIABLE FOR CLAIMS (BASED UPON BREACH OF IMPLIED WARRANTY) FOR ANY OTHER DAMAGES, WHETHER DIRECT, IMMEDIATE, FORESEEABLE, CONSEQUENTIAL, OR SPECIAL OR FOR ANY EXPENSES INCURRED BY REASON OF THE USE OR MISUSE OF EQUIPMENT WHICH DOES OR DOES NOT CONFORM TO THE TERMS AND CONDITIONS OF ANY CONTRACT RESULTING FROM THIS PROPOSAL.**
9. **PATENT INFRINGEMENT** Seller will hold its Customer and the Owner harmless from infringement of any United States patent covering equipment of its manufacture. This, of necessity, is limited to the equipment per se and cannot be extended to applications of such equipment in a system, except in writing by an officer of Seller. The Customer and Owner shall advise Seller immediately in the event any claims of infringement are brought to their attention.
10. **GOVERNING LAW** Any contract resulting from this proposal shall be governed by, construed, and enforced in accordance with the laws of the State of Georgia.
11. **CERTIFICATION** The person whose signature appears on the attached hereof hereby certifies that, to his best knowledge and belief, the annexed bid is not the result of any agreement, arrangement or understanding between the Seller and any other manufacturer or seller of automatic temperature control systems and that the prices, terms or conditions thereof have not been communicated by or on behalf of the Seller to any such person and will not be communicated to any such person prior to the official opening of said bid.
12. **ACCEPTANCE OF TERMS** This proposal shall become a binding contract between the Customer and Seller when accepted in writing by the Customer. Such acceptance shall be with mutual understanding that the terms and conditions of this proposal are a part thereof with the same effect as though signed by both parties named herein and shall prevail over any inconsistent provision of said order.
13. No waiver, alteration, or modification of the terms and conditions on this and the attached hereof shall be binding unless in writing and signed by an authorized representative of Seller.

Zack DeGrendel

From: Andrew Rainville <andrew@lanier-hvac.net>
Sent: Friday, May 10, 2024 3:09 PM
To: Zack DeGrendel
Cc: ryan@lanier-hvac.net
Subject: Re: Tucker MS - Official Response RFI #003 - Controls-Valves.pdf

Ryan and I spoke. We will install no cost add.

Andrew Rainville

Senior Project Manager

Cell 678.780.8954

Andrew@lanier-hvac.net

Lanier HVAC Services LLC

1560 Monroe Drive

Gainesville, GA 30507

www.lanier-hvac.net

On Fri, May 10, 2024 at 2:40 PM Zack DeGrendel <zdegrendel@evergreencorp.com> wrote:

Andrew,

Do you have any cost associated with installing the control valves per the attached RFI? Or is this RFI no longer applicable now that we aren't installing new piping and are reusing the existing?

Thanks,

Zack DeGrendel | Project Manager

3200 Cobb Galleria Parkway, Suite 240 | Atlanta, GA 30339 | www.evergreencorp.com

o. 678.244.6550 | m. 770.815.3631 | zdegrendel@evergreencorp.com

