

# State of Student Support Services

Frances Holt  
Assistant Superintendent



# Strategic Accelerators



**Student Success in All Areas**

**The CSD Student Experience: Preparing to Lead a Better World**



**Building and Sustaining an Engaging and Inclusive Culture**

**The CSD Cultural Experience: Connections, Culture, and Community (C3)**



**Cultivating and Retaining High-Quality Professionals**

**The CSD Staff Experience: From Hire to Retire**



**Organizational Effectiveness and Excellence**

**The CSD Sustainable Experience: Future Ready Classrooms**

# Social Emotional Learning (SEL) Framework Progress on Year 0



## Board Presentation (September)

- Approval of the SEL Framework as presented

## Needs Assessment (October/November)

- Listen to ideas
- Identify gap
- Identify goals
- Gather feedback from staff, parents, and community

## Selection of SEL Standards (October/November)

- Review of SEL standards from various states
- Selection of 6-12 SEL standards for CSD

## Selection of Programming (November/December)

- Presentations from programming vendors
- Ensure alignment with selected standards
- Secure funds in the FY26 budget

## Vision, Goals, & Logistics (January-May)

- Short-term and long-term goals
- Solidify logistics (school schedules)
- Scope & Sequence and pacing guides
- K-5 standards selection
- Develop and provide foundational learning sessions

**If**

If the **district** commits to implementing high-quality, evidence-based **SEL programming** that aligns with **our standards** and values...

**Then**

**Schools** will create supportive and inclusive learning environments that foster strong school climate and culture...

**And**

Teachers will integrate SEL practices and curriculum into daily routines and academic instruction within the **classroom**...

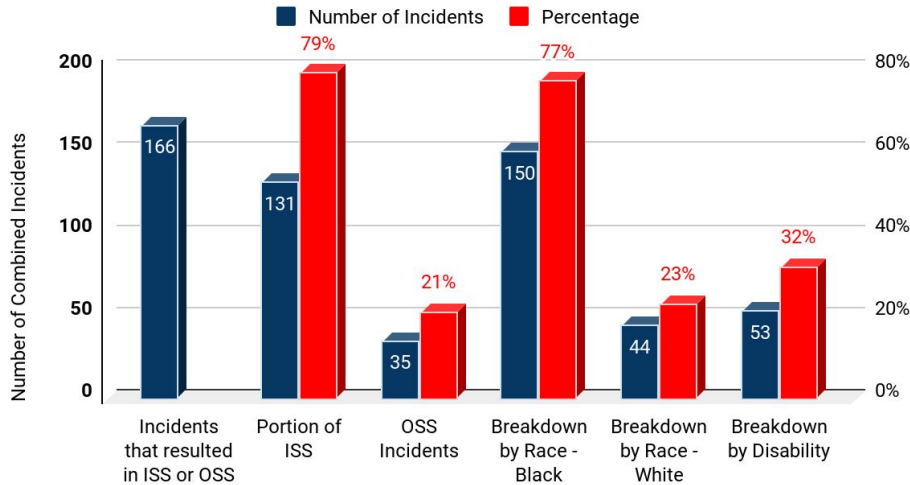
**So**

**Students** will learn skills in behavior, attendance, academic performance, and overall well-being.

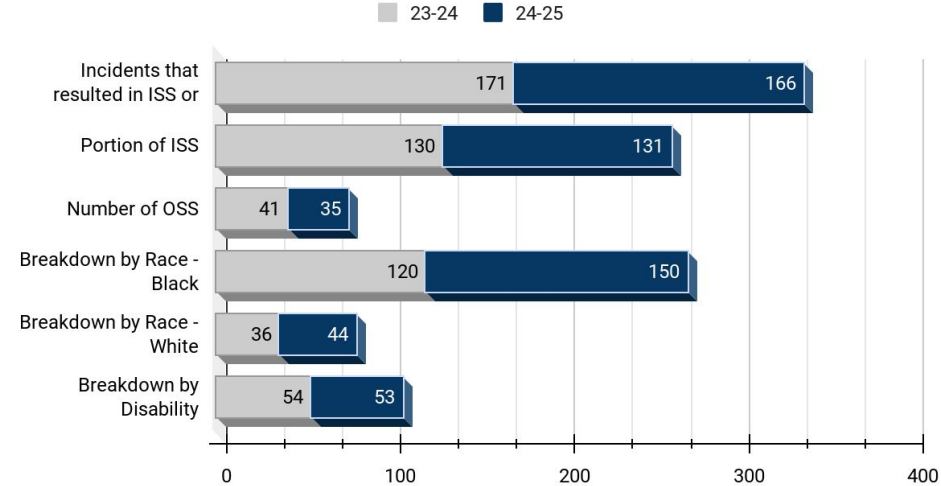
# Student Discipline Stats



Districtwide ISS and OSS Incidents July 2024 to November 2024



23-24 and 24-25 July to November Comparison of ISS and OSS Incidents



## In-School Suspension (ISS) and Out-of-School Suspension (OSS)

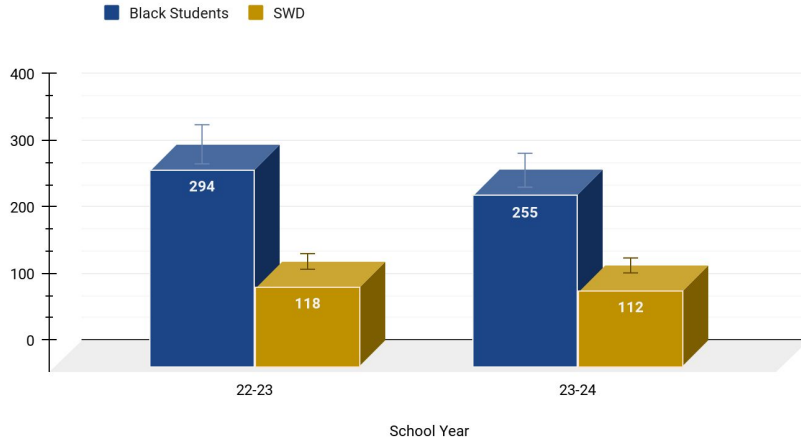
- The differences in combined incidents, percentages for ISS and OSS, and breakdown by disability are not significant when comparing fall 2023 to fall 2024.
- Greater number of ISS than OSS.
- Breakdown by race shows an increase of suspensions for both black and white students.

- ISS for ½ day or less is not included in this data.
- This data only reflect state reportable ISS and OSS.
- Data reflects completed referrals.

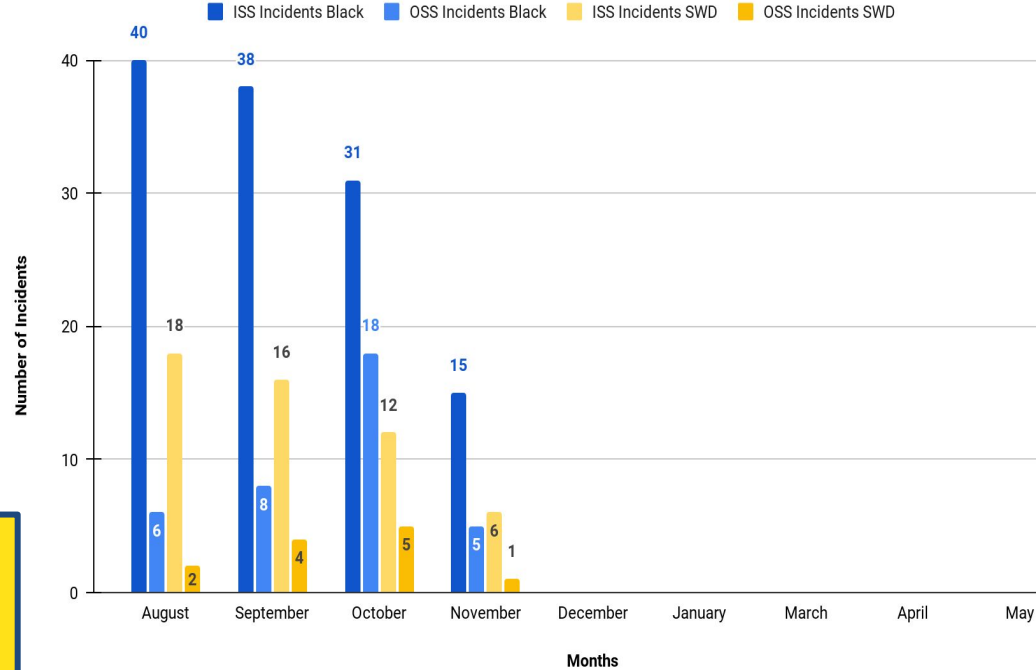
# Reducing ISS and OSS for Focus Populations Black Students and Students with Disabilities (SWD)



## Reducing by 5% ISS and OSS Incidents for Black Students and SWD



## 2024-2025 Number of ISS and OSS Incidents per Month for Black Students and SWD



### 2024-2025 Key Actions

- Defined rationale for exclusionary discipline
- Discipline consultations for every OSS
- Problem-solving meetings chronic behaviors
- Emphasis on evidenced-based behavior interventions and referrals to wraparound support
- Trauma Informed Curriculum

- ISS for ½ day or less is not included in this data.
- This data only reflect state reportable ISS and OSS.
- Data reflects completed referrals.

# Positive Behavior Interventions and Supports (PBIS)



PBIS Data Measures	2022-2023	2023-2024	2024-2025
Self-Assessment Survey (SAS) Participation Rates =80% or more of staff	2 schools	7 schools	8 schools ↑
Universal Classroom Systems Training	0 eligible schools	0 eligible schools	2 eligible schools ↑
PBIS Operational Recognition by GaDOE	0 schools	2 schools	6 schools ↑

## 2024-2025 Key Actions

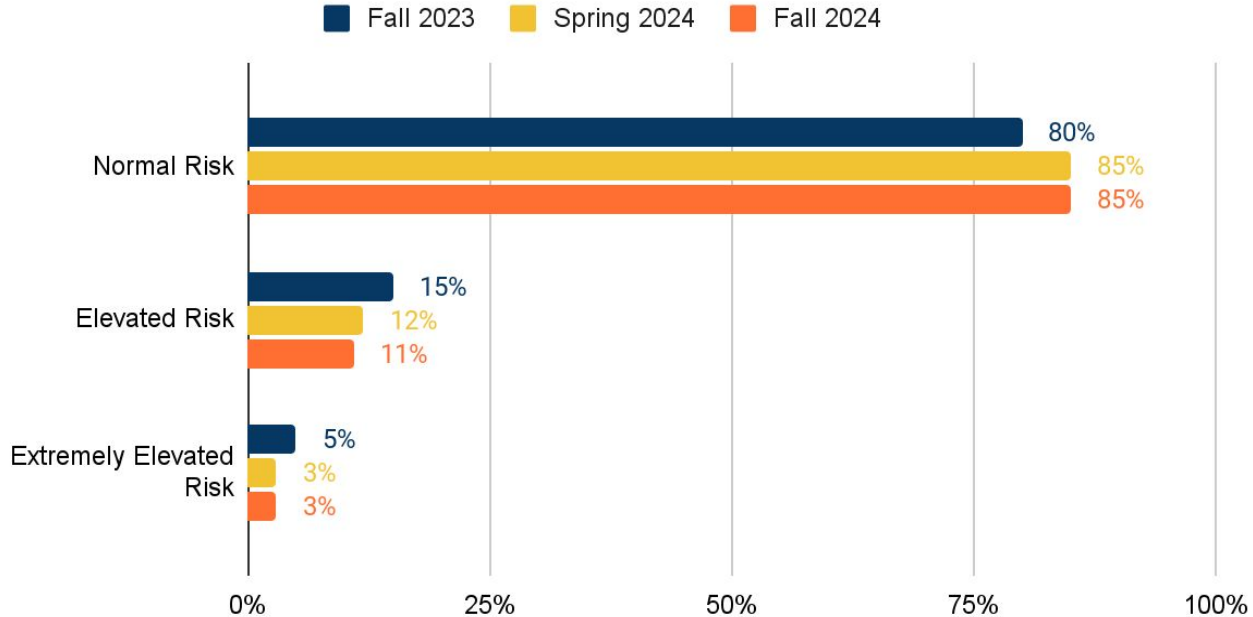
- Monthly feedback and 1:1 coaching support to PBIS teams
- PBIS action planning days with district staff
- Transition towards integration of PBIS and Multi-Tier System of Supports (MTSS) into GaMTSS





## BASC-3 BESS Participation Percentage Rates

Social, Emotional, and Behavior (SEB) Screener



## Participation Rates

- Fall 2024: 93%
- Spring 2024: 92%
- Fall 2023: 90%
- Spring 2023: 85%



## 2024-2025 Key Actions

- Streamlined counselor referral process
- School Counselor and Decatur Student Center Counselor Pyramid of Services
- Applied Suicide Intervention Intervention Skills (ASIST) training for all counselors
- Targeted Attendance Support
- Standard Operating Procedures for threat assessments and Bark alerts
- Revised Comprehensive Mandated Reporter Protocol
- Increased parental engagement opportunities





**2023-2024  
TITLE I Growth Results**

Reading		
Grade Levels	Met	Did Not Meet
K-5	71%	29%

Math		
Grade Levels	Met	Did Not Meet
K-5	74%	26%



**2023-2024  
ESOL ACCESS Assessment  
Student Growth Percentiles**

High	44%
Typical	25%
Low	31%

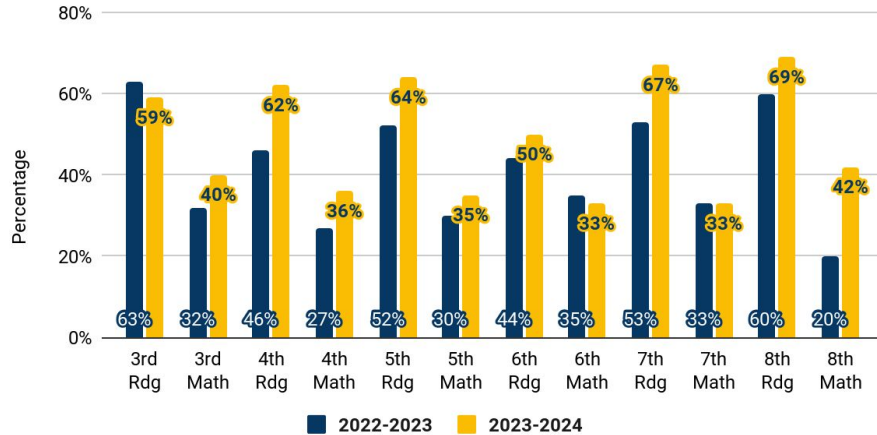
- Updates and Key Actions**
- NEW ESOL Curriculum
  - NEW McKinney-Vento Referral Form
  - UPDATED McKinney-Vento Needs Assessment Form
  - Ongoing Work to Increase Family Engagement
  - Ongoing Professional Learning to Enhance Teacher Instructional Capacity

# School Psychology, Section 504, and Special Education



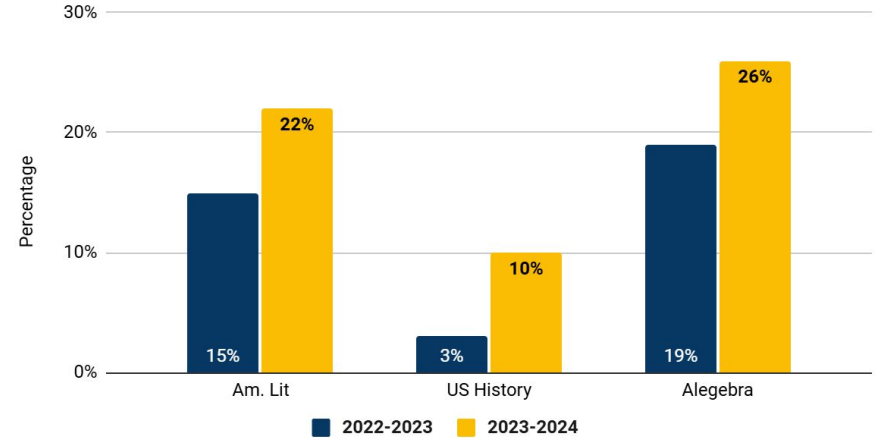
SWD Percentage Growth from Proficient to Distinguished 23-24 and 24-25

GMAS



SWD Percentage Growth from Proficient to Distinguished 23-24 and 24-25

EOC



## Special Education and Section 504

- Special Olympics - March 2025
- Instructional Resources
- Professional Learning and Teacher Retention
- New 504 Module in Infinite Campus

## School Psychologist

- 197 comprehensive evaluations in 2023-2024
- Professional Learning on Eligibility
- GSU interns and practicum students

# Questions

