

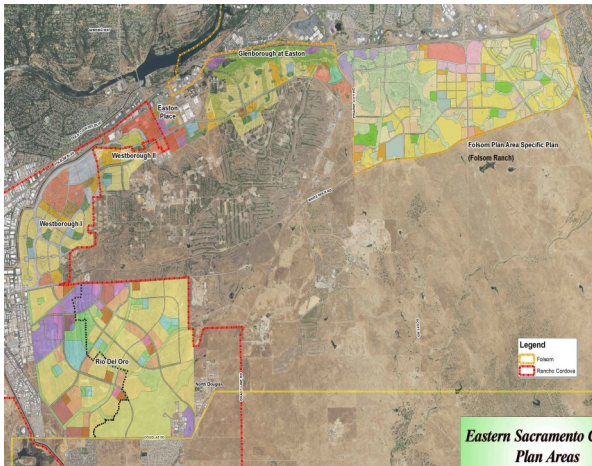
## WHAT IS MEASURE M?

### What is Measure M?

Measure M, approved in March 2007, is a \$750 million general obligation bond for the construction of new elementary schools, middle schools, high schools, libraries, support facilities, land acquisition, and a district maintenance and warehouse facility in School Facilities Improvement District (SFID) No. 3. Funds can only be used for Folsom schools located in SFID No. 3 and cannot be used for administrative salaries or school supplies.

SFID No. 3 encompasses the Folsom Ranch area (south of highway 50) and areas of Rancho Cordova and Sacramento County, further outlined below. The five specific areas include:

Folsom Ranch - Folsom  
Rio del Oro - Rancho Cordova  
Glenborough - Sacramento County  
Easton Place - Sacramento County  
Westborough - Rancho Cordova and Sacramento County



## FOLSOM CORDOVA UNIFIED SCHOOL DISTRICT

### About the District

The Folsom Cordova Unified School District is committed to providing excellence in educational programs that carry high expectations for each student's achievement and success. The District has 21 elementary schools, 4 middle schools, 3 high schools, 2 continuation high schools, a charter school, independent study, an online virtual school, adult education and other service centers.

Guided by the highest expectations, Folsom Cordova Unified School District provides our students with a broad range of rigorous educational opportunities. Our staff enables students to reach their full potential and successfully meet the demands and opportunities of a highly technological 21st century.

Students graduate with a core of knowledge and skills that become the building blocks for lifelong learning. They graduate with a positive attitude and the leadership, character, and academic skills necessary to excel in a global arena.

### Board of Education

President: Ed Short  
Vice President: David Reid  
Clerk: Joshua Hoover  
Members: Chris Clark and Tim Hooley  
Student Member: Alice Gao

Superintendent: Dr. Sarah Koligian, Ed.D.  
Asst. Superintendent Bus. Services: Sean Martin  
Chief Operations Officer: Matt Washburn

**Contact Information**  
1965 Birkmont Drive  
Rancho Cordova, CA 95742  
Phone: 916-294-9000

## MEASURE M

### FOLSOM CORDOVA UNIFIED SCHOOL DISTRICT



Mangini Ranch Elementary School

### ANNUAL REPORT

2020-2021



Information about this bond measure and related projects can be found at the following website:  
[www.fcusd.org/Page/2411](http://www.fcusd.org/Page/2411)

# MEASURE M OVERVIEW & PROJECTS

Although Measure M does not require a Citizens Bond Oversight Committee (CBOC), the District included the formation of a CBOC as part of the bond text. The CBOC is established to assure that bond funds are used on school facility improvements, as defined in the bond text. The CBOC reviews an annual performance and financial audit report prepared by an independent Certified Public Accounting firm.

The Committee meets several times a year and its meetings are open to the public. Parents and community members are encouraged to attend. The Committee is currently being reorganized.

Updates to the bond projects can be found on the District website at [www.fcusd.org](http://www.fcusd.org). Please contact JoAnne Blaisdell at [jblaisdell@fcusd.org](mailto:jblaisdell@fcusd.org) with any questions.

## COMPLETED PROJECTS

### ◆ Mangini Ranch Elementary School

Construction of a new single building, two story elementary school in the Folsom Ranch development area. The building square footage is 65,000 with a capacity of 665 students.



## CURRENT PROJECTS

### ◆ Folsom Ranch Area Elementary School

A new elementary school is currently in the planning stages in the Folsom Ranch development area. The projected opening date is for the 2024-2025 school year.

### ◆ Folsom Ranch Area High School

Currently in the design phase. Tentative school opening is planned for 2028.

## FUTURE PROJECTS

### Folsom Ranch Area

- ◆ Construction of five elementary schools, one middle school and one high school.
- ◆ Folsom Ranch is estimated to generate approximately 5,695 new students.
- ◆ Number of Students:
  - 3,009 K-5
  - 1,087 6-8
  - 1,428 9-12
  - 171 Special Education

### Rio del Oro

- ◆ Construction of six elementary schools, two middle schools and one high school.
- ◆ Rio del Oro is estimated to generate approximately 6,564 new students.
- ◆ Number of Students:
  - 3,410 K-5
  - 1,293 6-8
  - 1,663 9-12
  - 198 Special Education

### Glenborough

- ◆ Construction of two elementary schools and one middle school.
- ◆ Glenborough is estimated to generate approximately 1,613 new students.
- ◆ Number of students:
  - 835 K-5
  - 311 6-8
  - 418 9-12
  - 49 Special Education

### Easton Place

- ◆ No schools are planned for this area as it is mostly commercial.
- ◆ Easton Place is estimated to generate approximately 525 new students.
- ◆ Number of students:
  - 279 K-5
  - 82 6-8
  - 148 9-12
  - 16 Special Education

### Westborough

- ◆ Construction of three elementary schools.
- ◆ Westborough is estimated to generate approximately 2,791 new students.
- ◆ Number of students:
  - 1,461 K-5
  - 537 6-8
  - 709 9-12
  - 84 Special Education

## SUMMARY

- ◆ Current planned development will bring a projected 17,189 students
- ◆ 16 Elementary Schools
- ◆ 4 Middle Schools
- ◆ 2 High Schools
- ◆ Folsom Cordova Unified School District could nearly double in size over the next 20-30 years, based on projected growth in the Measure M SFID No. 3 area.
- ◆ Students will attend existing schools with available capacity until new schools are built and interim facilities will be added as necessary.
- ◆ District staff continues to work with developers, the City of Folsom, and the City of Rancho Cordova on school site locations and development.