

CHICO UNIFIED SCHOOL DISTRICT

# DRAFT TRUSTEE AREA MAPS PUBLIC HEARING

NOVEMBER 3, 2021

Presented by:

Jamie King-Iseman, President, King Consulting

Rob Murray, Director, King Consulting



# Agenda

- Review of Trustee Area Creation Timeline
- Review of Criteria
- Review of Initial Draft Trustee Area Maps
- Review of Criteria Data for Each Map
- Next Steps

# Review of Timeline and Criteria



# Proposed Timeline

Date	Action
September 1, 2021	Public Outreach Meeting #1
September 15, 2021	Public Outreach Meeting #2
October 20, 2021	Presentation of Draft Trustee Area Maps
November 3, 2021	First Hearing on Draft Maps
November 17, 2021	Second Hearing on Draft Maps after incorporating feedback from First Hearing.
By November 24, 2021	Final map options based on all Board and public feedback to be posted on District website
December 15, 2021	Board to adopt map
TBD	Approval of trustee area map by County Committee on School District Reorganization (County of Board of Education)
TBD	State Board of Education approval of CUSD waiver of election, which automatically establishes trustee area elections
TBD	The first election to use the trustee areas must be held more than 120 days after trustee areas are established by the State Board of Education

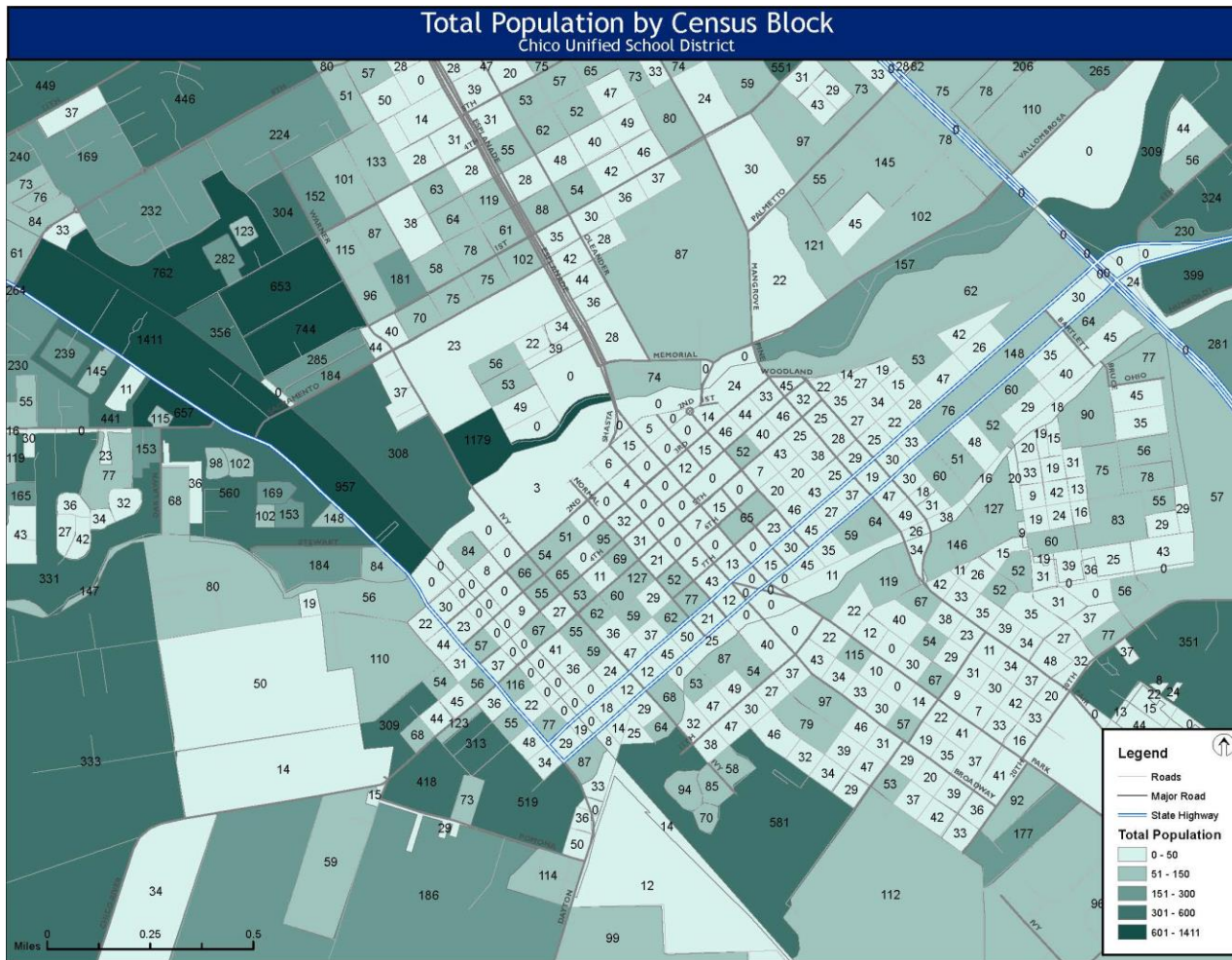


# Criteria Discussed in Public Meetings

## Legal Requirements

1. CUSD's Hispanic/Latino population is not particularly concentrated based on 2020 Census data, with one area identified to keep within a single trustee area.
2. The total CUSD population was recorded in the 2020 Decennial United States Census at **120,119** people. Each Trustee Area must therefore contain between 22,823 and 25,225 people.

# Census Data Background

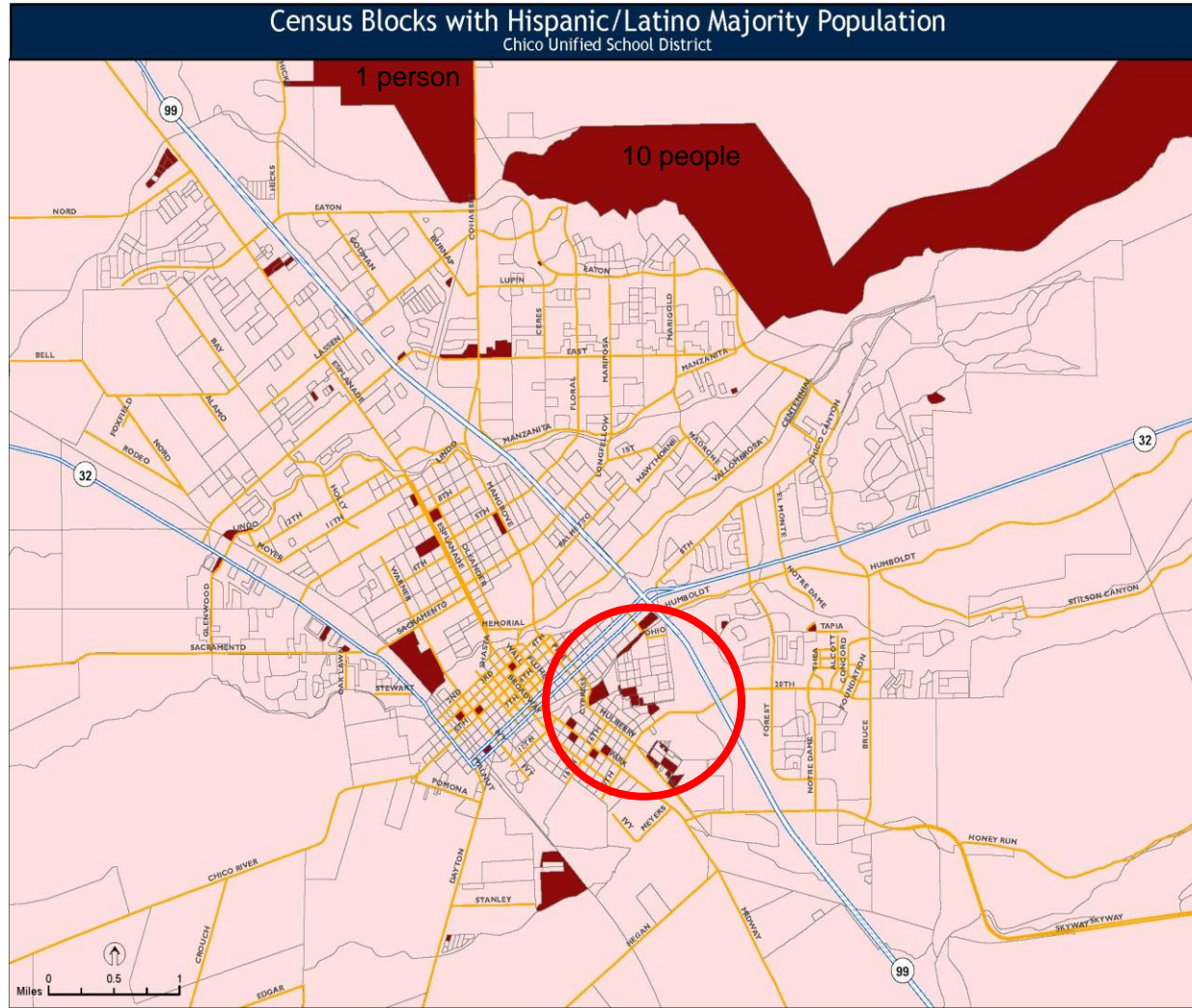


- Data is available in a variety of geographic levels.
  - *The smallest level is called a Census Block, which we will use to provide the most precision in creating Trustee Areas.*
- **Census Blocks are not uniform in size or population.**
  - *Chico USD contains Census Blocks ranging in population from 0 to 1,411.*

# Changes since 2010

- From the 2010 Census to the 2020 Census, Chico USD's total population increased from 107,182 to 120,119.
- The District is more racially and ethnically diverse.
  - *The Hispanic/Latino community remains the most significant protected class; this population increased from 14.7% of the District population to 19.3%*
- This increased Hispanic/Latino population is more evenly dispersed around the District than what the 2010 Census data showed.

# CUSD Hispanic/Latino Concentration



- On this map, Census Blocks with majority Hispanic/Latino population are shaded in a darker color.
- It is important to keep in mind that some Blocks, such as the large ones at the north of this map, contain very few people.
- The circled area on the map represents the greatest concentration of multiple majority Hispanic/Latino Blocks with significant total populations.

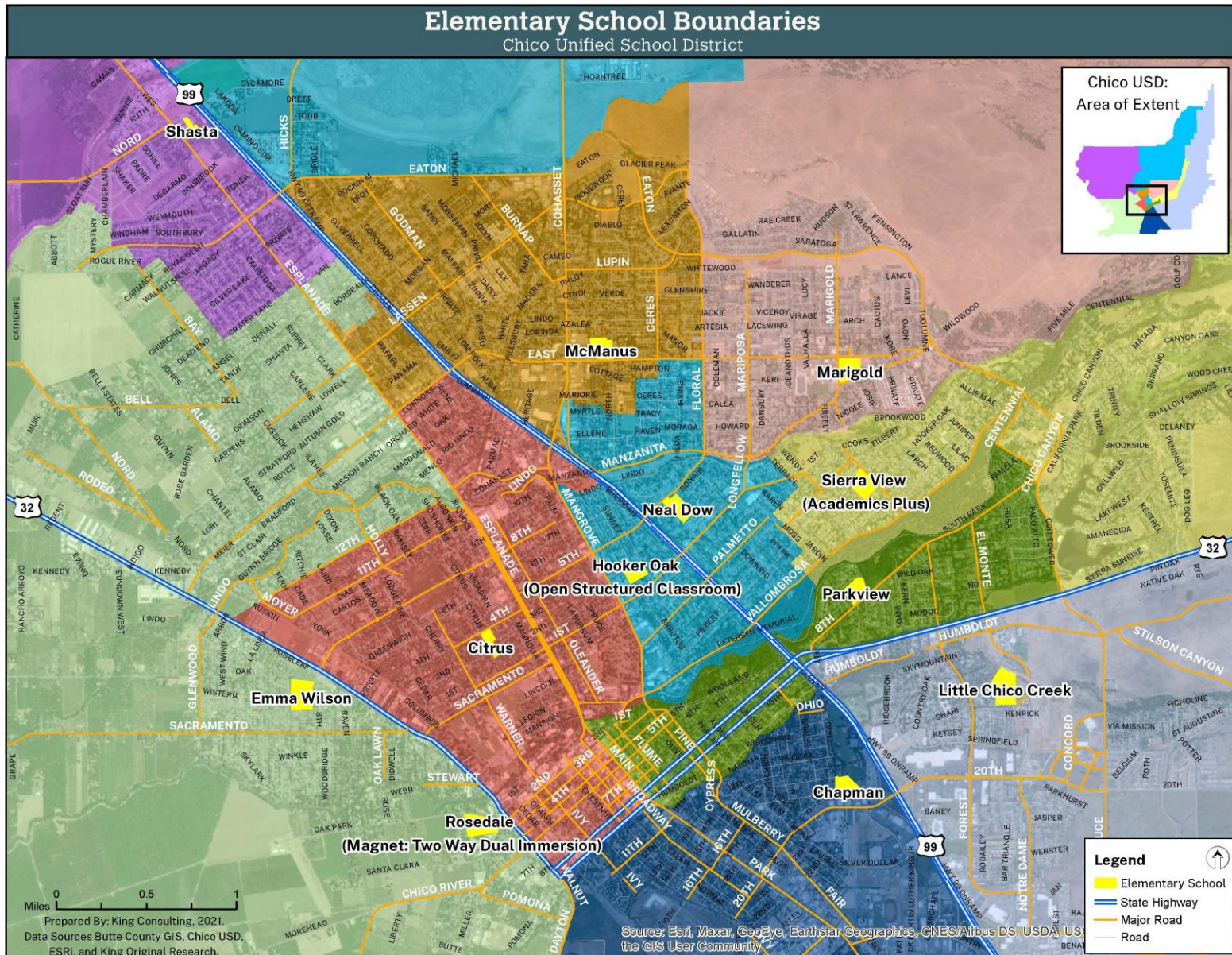
# Criteria Discussed in Public Meetings

## Community Input

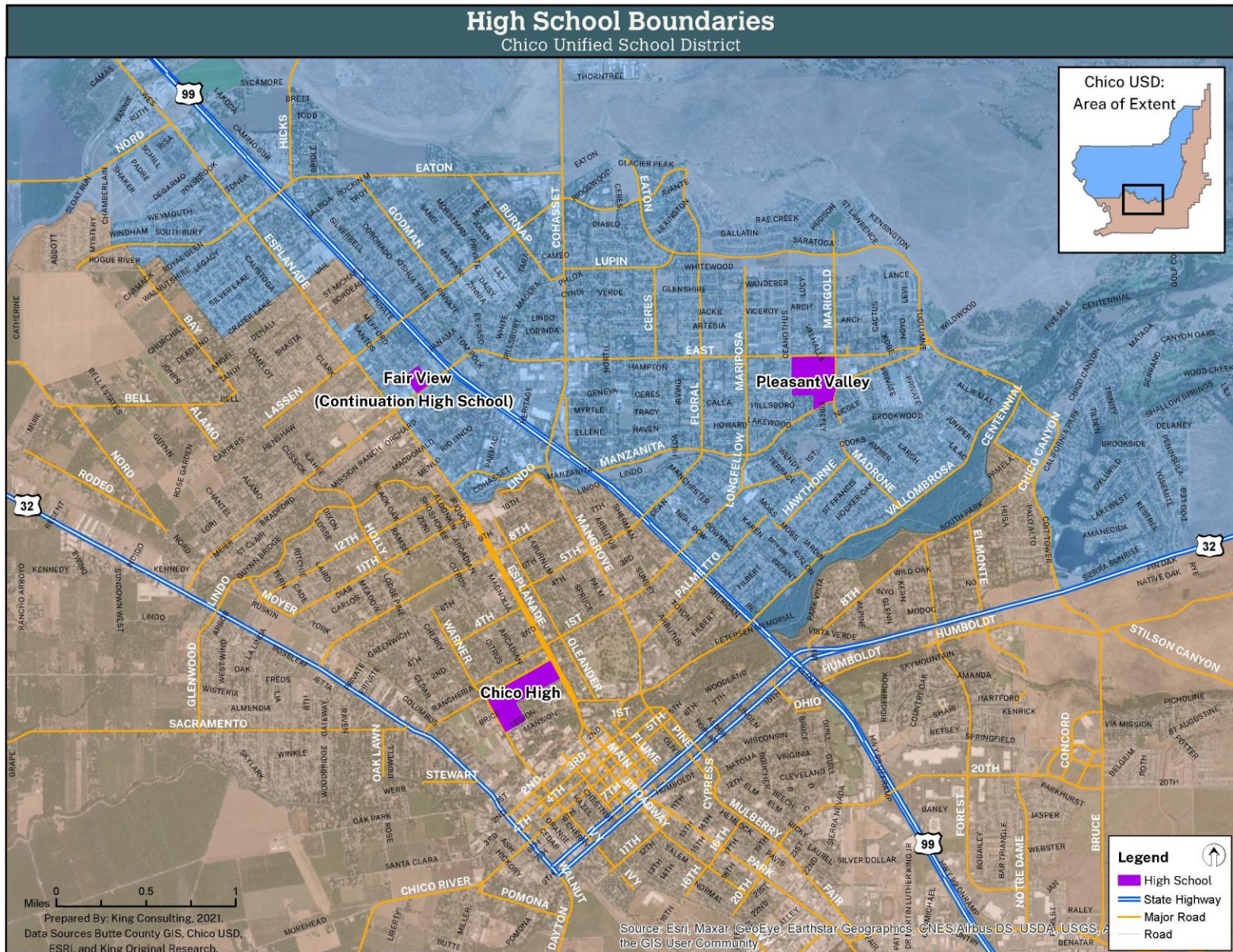
1. There was support expressed for Trustee Areas that are each entirely within one high school attendance boundary or the other. (Blue map option)
  - 2020 criterion (March 4, 2020)
2. Speakers also raised support for Trustee Areas that each cover both high school attendance boundaries (Green map option).
  - 2020 criterion (March 4, 2020)
3. Speakers also expressed interest in Trustee Areas based on elementary school boundaries (Purple map option).
  - Public comment, September 15, 2021
4. Several neighborhoods were identified as “communities of interest” to be kept together in a single Trustee Area:  
*Barber, Chapmantown, Downtown, South Campus, The Avenues*
  - 2020 criterion (Public comment, March 11, 2020)
5. Trustee Areas should be as balanced as possible from a socioeconomic standpoint.
  - 2020 criterion (March 4, 2020)
6. There is interest in seeing the proportion of owners and renters in each Trustee Area.
  - Board comment, September 1, 2021



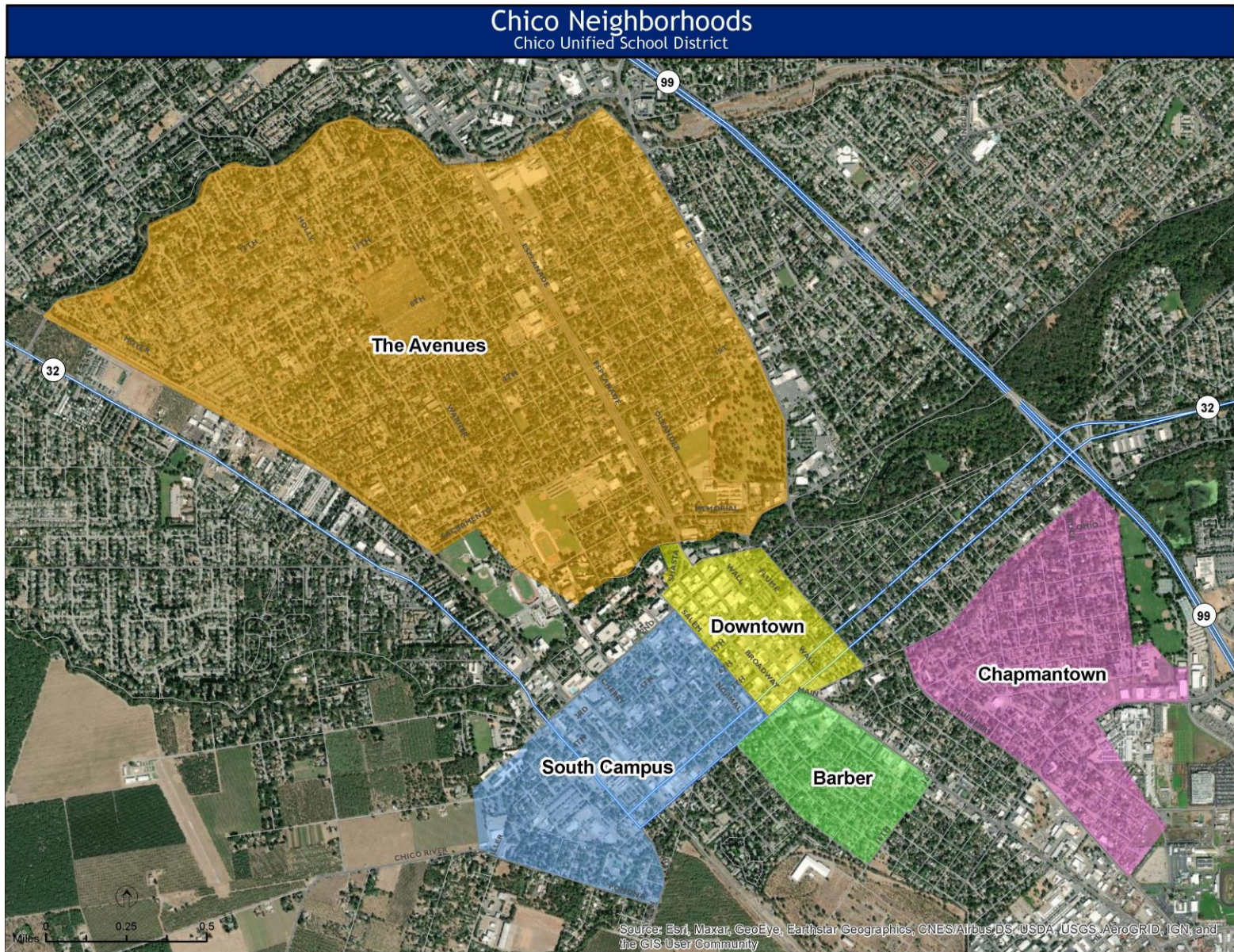
# CUSD Elementary School Boundaries



# CUSD High School Boundaries



# Chico Neighborhoods



# Draft Trustee Area Maps



# Summary of Initial Draft Maps

## Blue

### Blue Map Option:

- Creates two Trustee Areas in the PVHS boundary and three Trustee Areas in the CHS boundary.
- Range of Hispanic/Latino population is 14.2% to 21.8%
- All areas are within required population range.
- Most overall balanced option by median household income.
- All identified neighborhoods are contained within a single Trustee Area.

## Green

### Green Map Option:

- Every Trustee Area represents both high schools.
- Range of Hispanic/Latino population is 14.0% to 23.5%
- All areas are within required population range.
- More diversity in socioeconomic data and housing tenure.
- South Campus and The Avenues are split between multiple Trustee Areas.

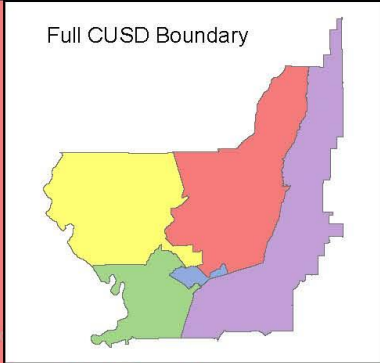
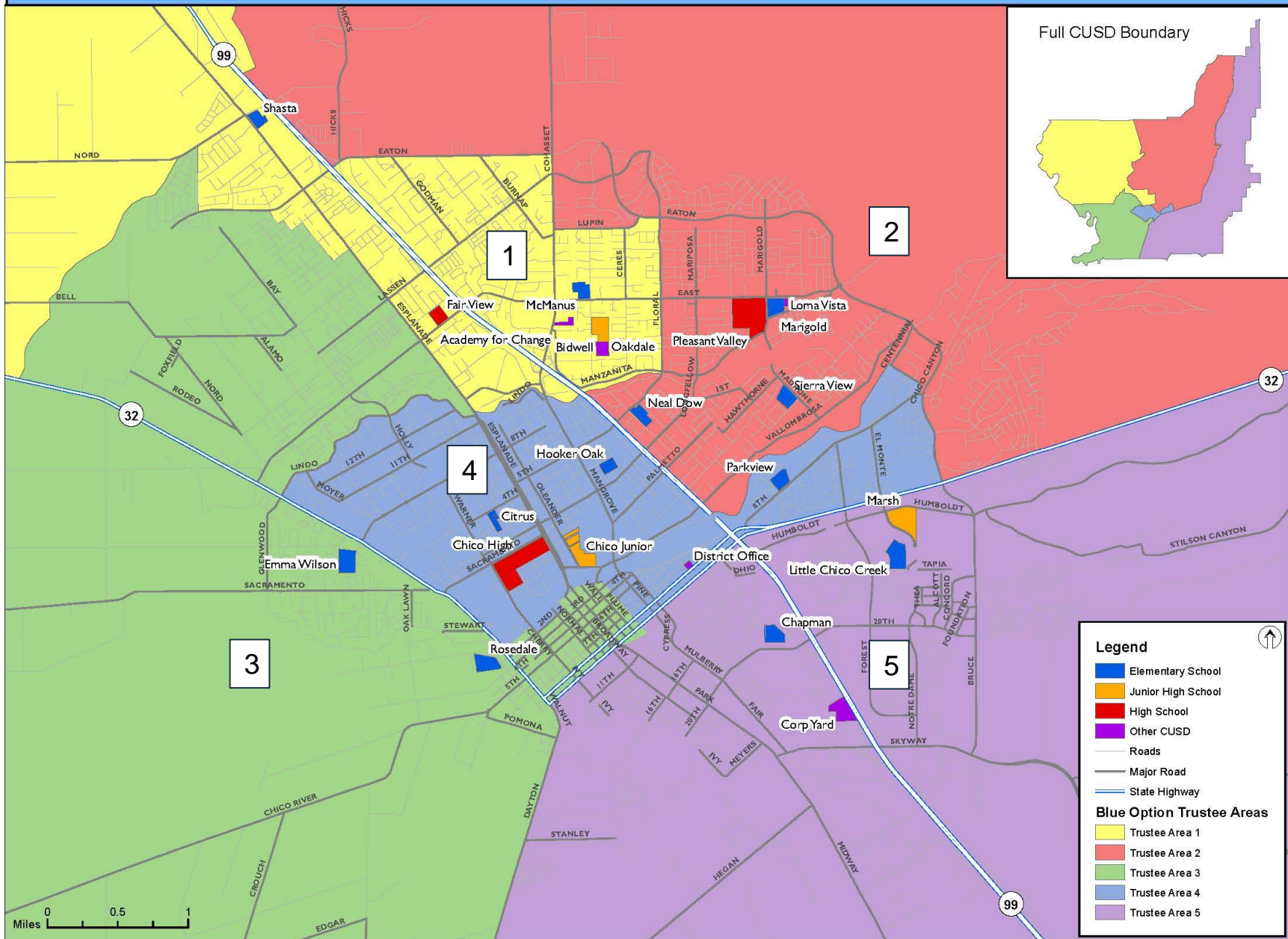
## Purple

### Purple Map Option:

- Emphasis on elementary school boundaries.
- Range of Hispanic/Latino population is 13.4% to 24.8%
- All areas are within required population range.
- Most diversity in socioeconomic data and housing tenure.
- The Avenues are split between two Trustee Areas.

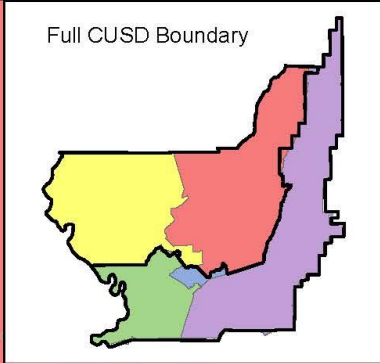
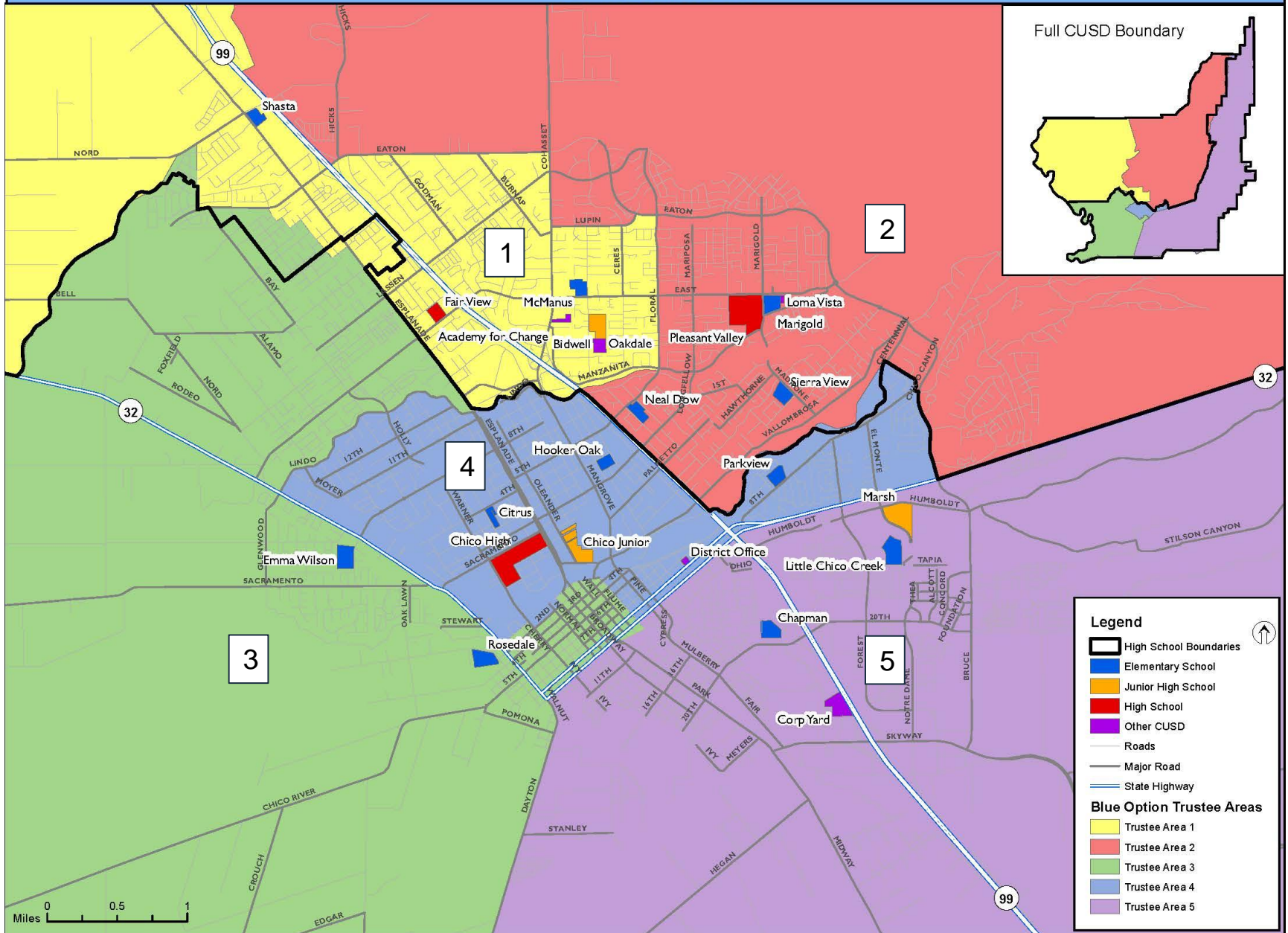
# Draft Trustee Area Map Option: Blue

## Chico Unified School District



# Draft Trustee Area Map Option: Blue

## Chico Unified School District

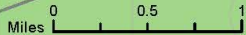


**Legend**

- High School Boundaries
- Elementary School
- Junior High School
- High School
- Other CUSD
- Roads
- Major Road
- State Highway

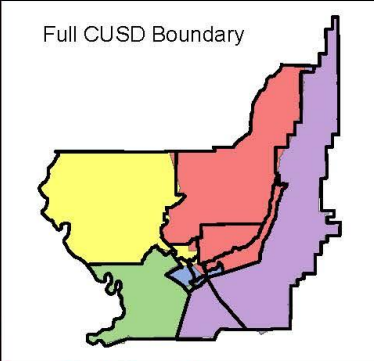
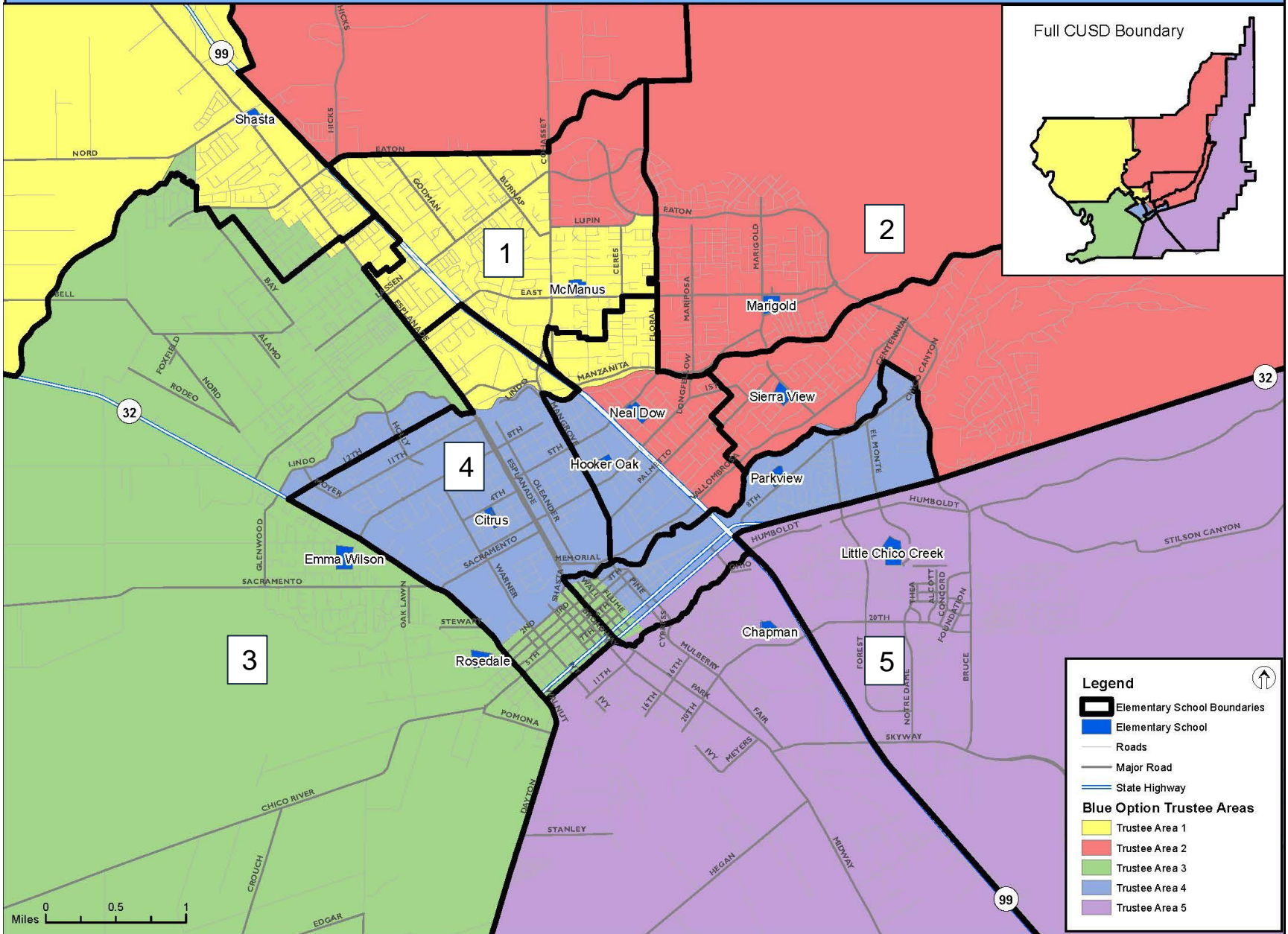
**Blue Option Trustee Areas**

- Trustee Area 1
- Trustee Area 2
- Trustee Area 3
- Trustee Area 4
- Trustee Area 5



# Draft Trustee Area Map Option: Blue

## Chico Unified School District

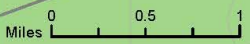


**Legend**

- Elementary School Boundaries
- Elementary School
- Roads
- Major Road
- State Highway

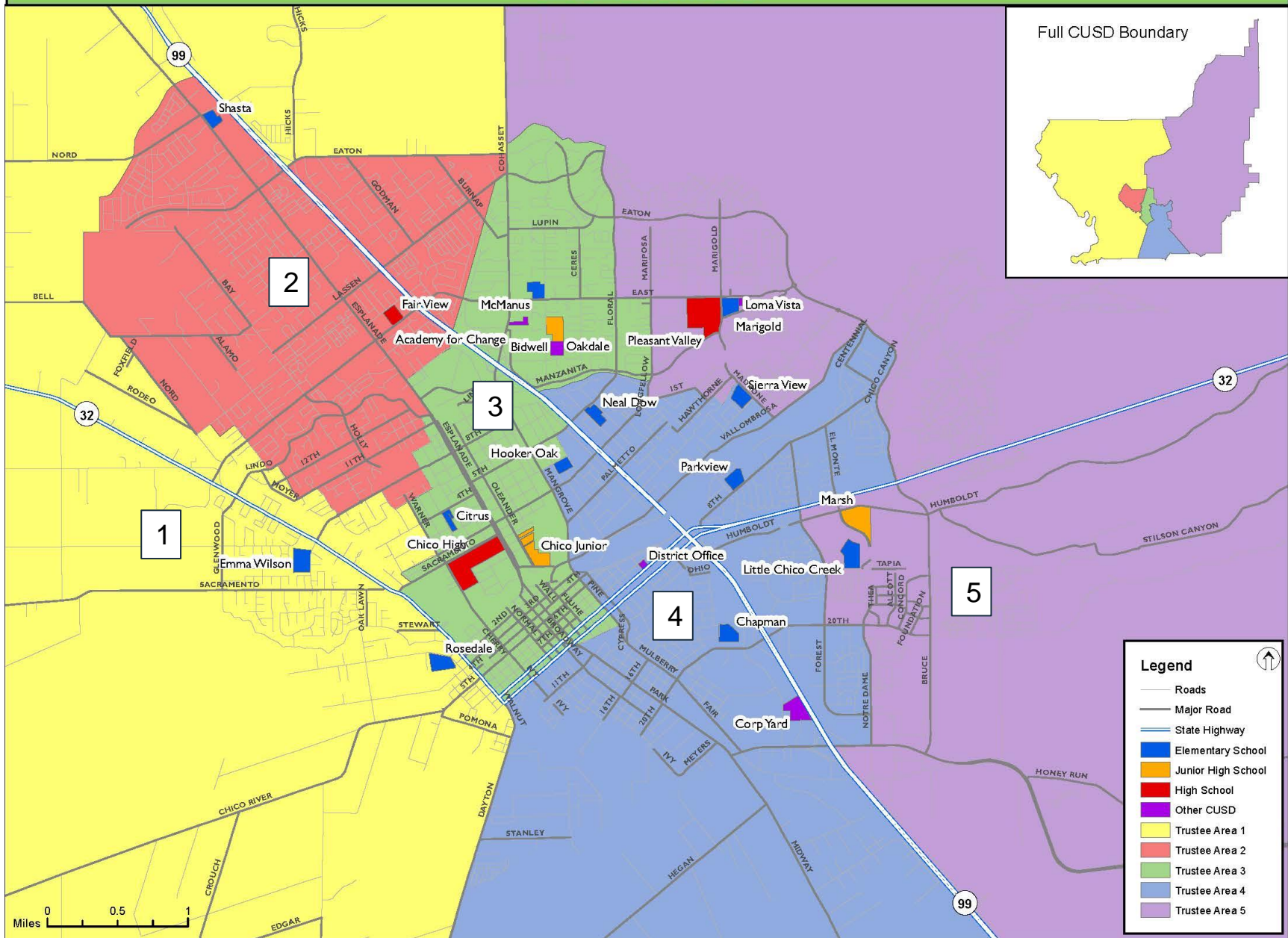
**Blue Option Trustee Areas**

- Trustee Area 1
- Trustee Area 2
- Trustee Area 3
- Trustee Area 4
- Trustee Area 5



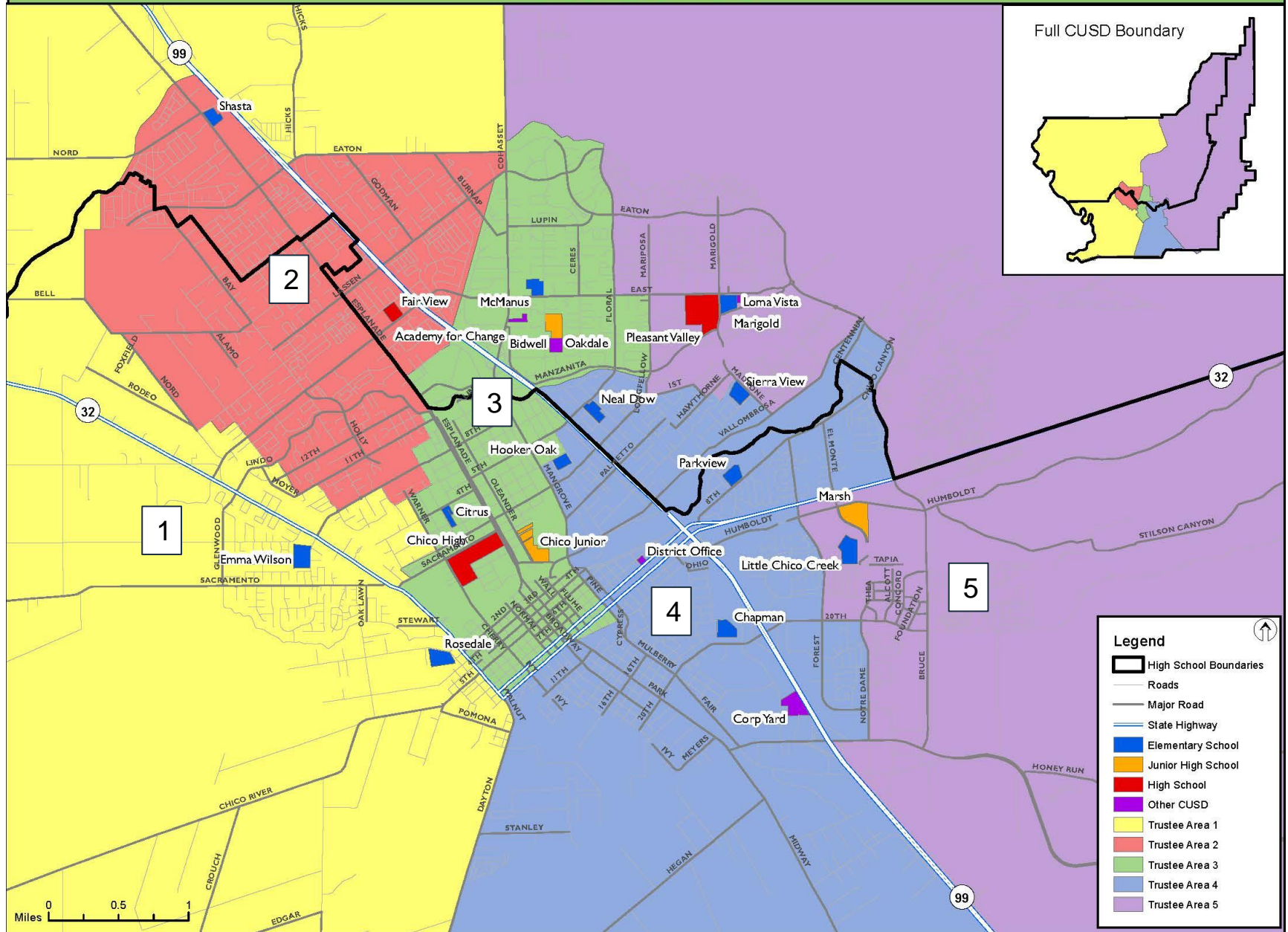
# Draft Trustee Area Map Option: Green

## Chico Unified School District



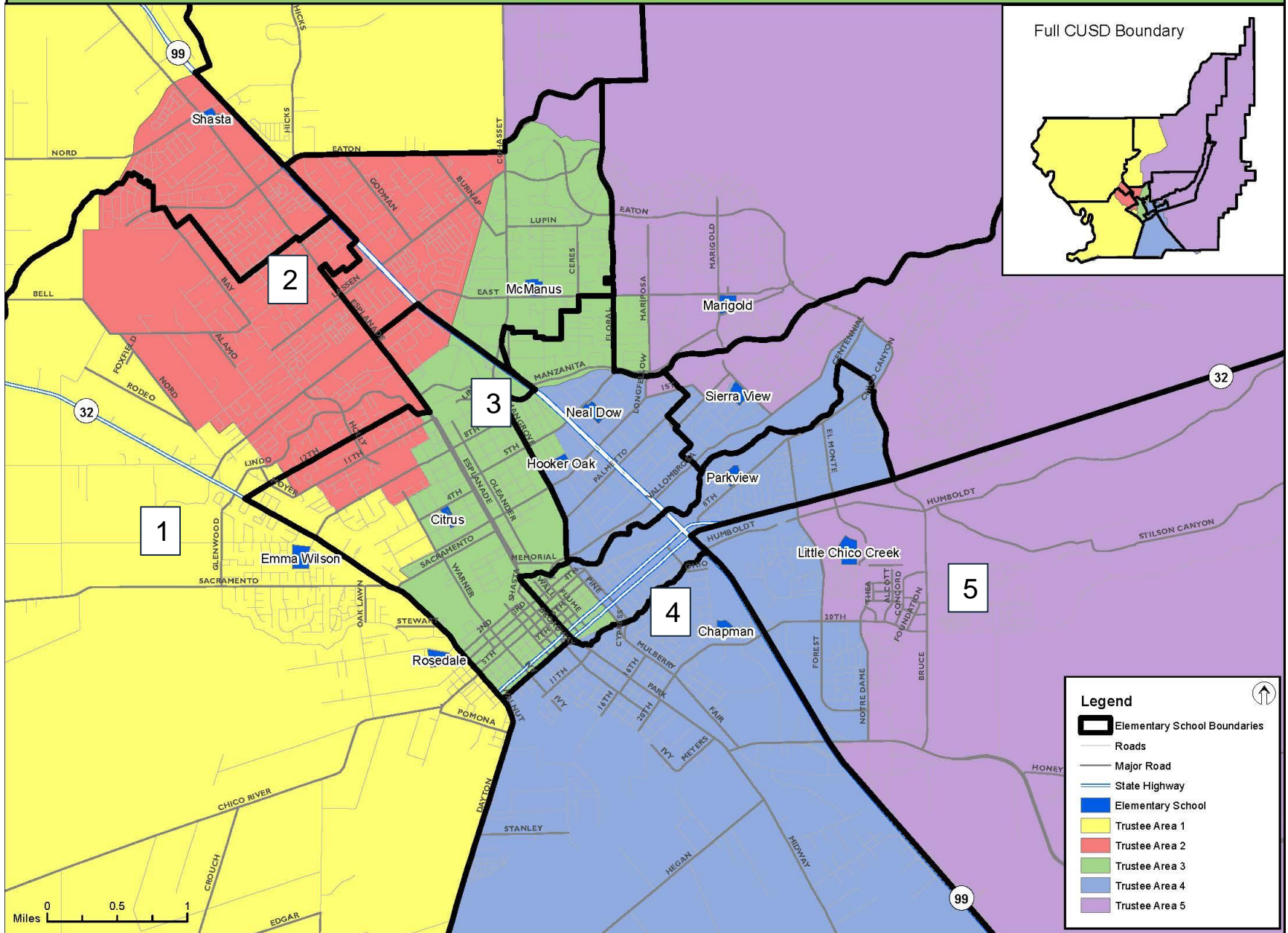
# Draft Trustee Area Map Option: Green

## Chico Unified School District



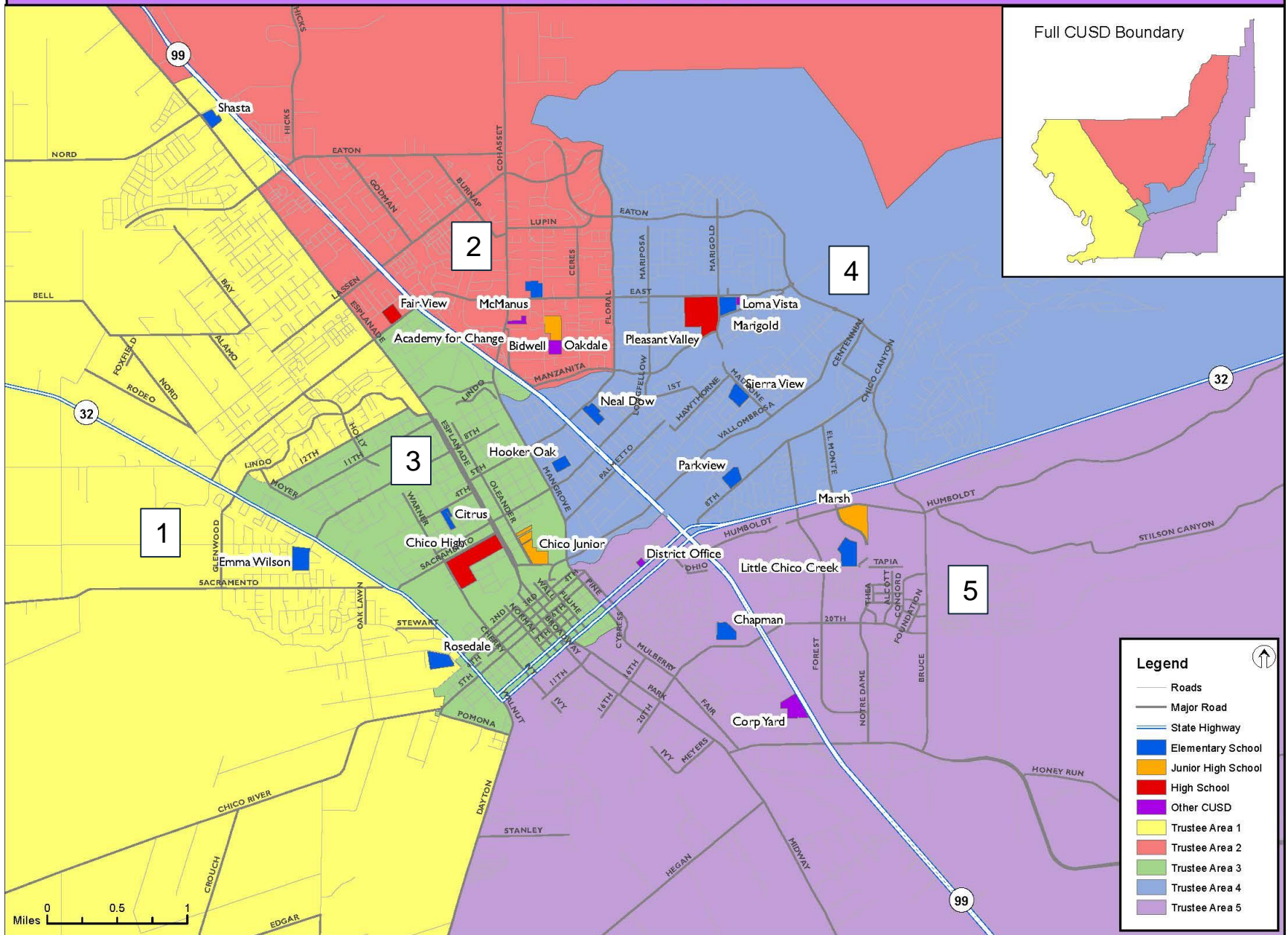
# Draft Trustee Area Map Option: Green

Chico Unified School District



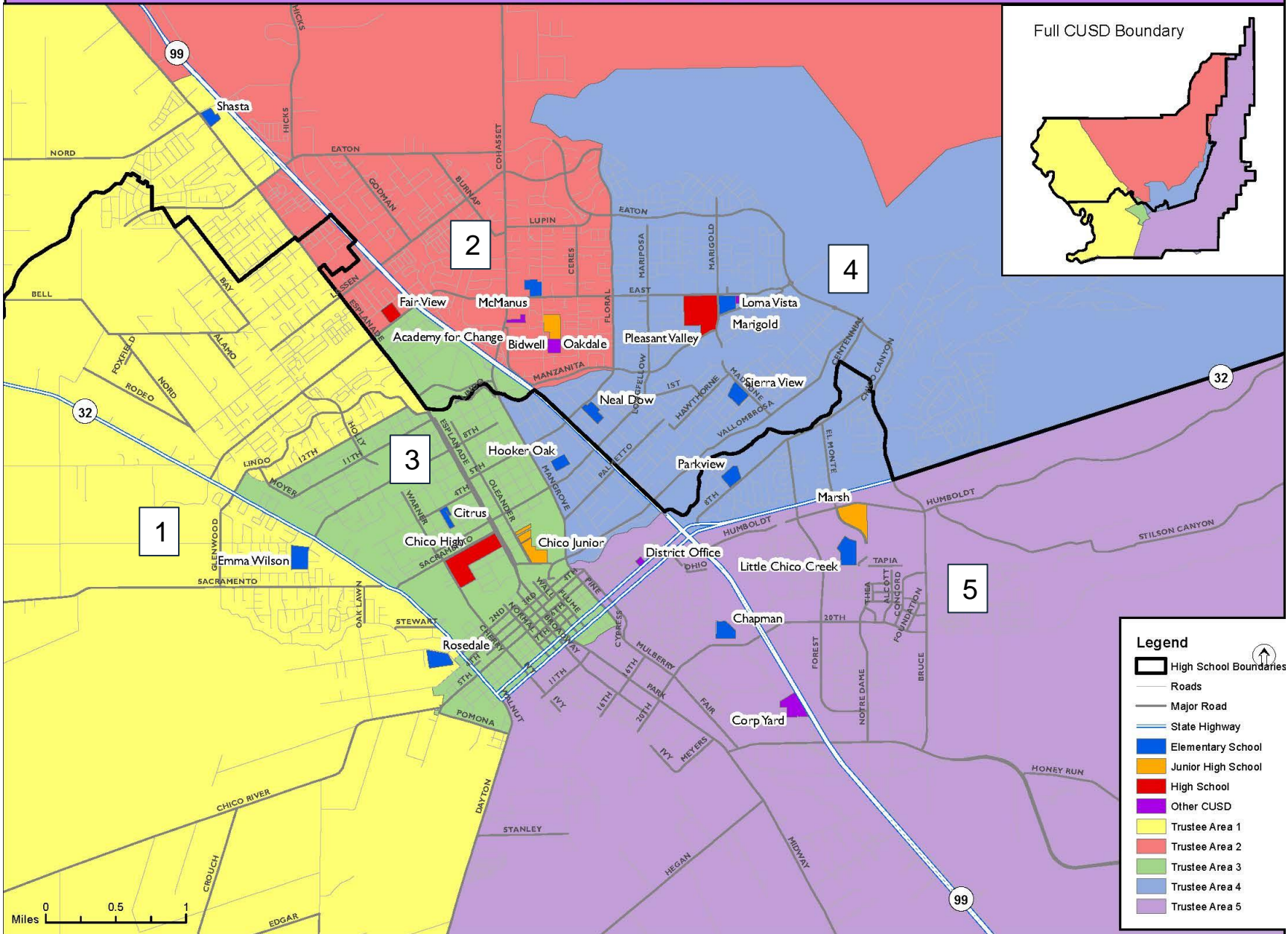
# Draft Trustee Area Map Option: Purple

## Chico Unified School District



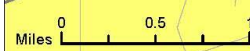
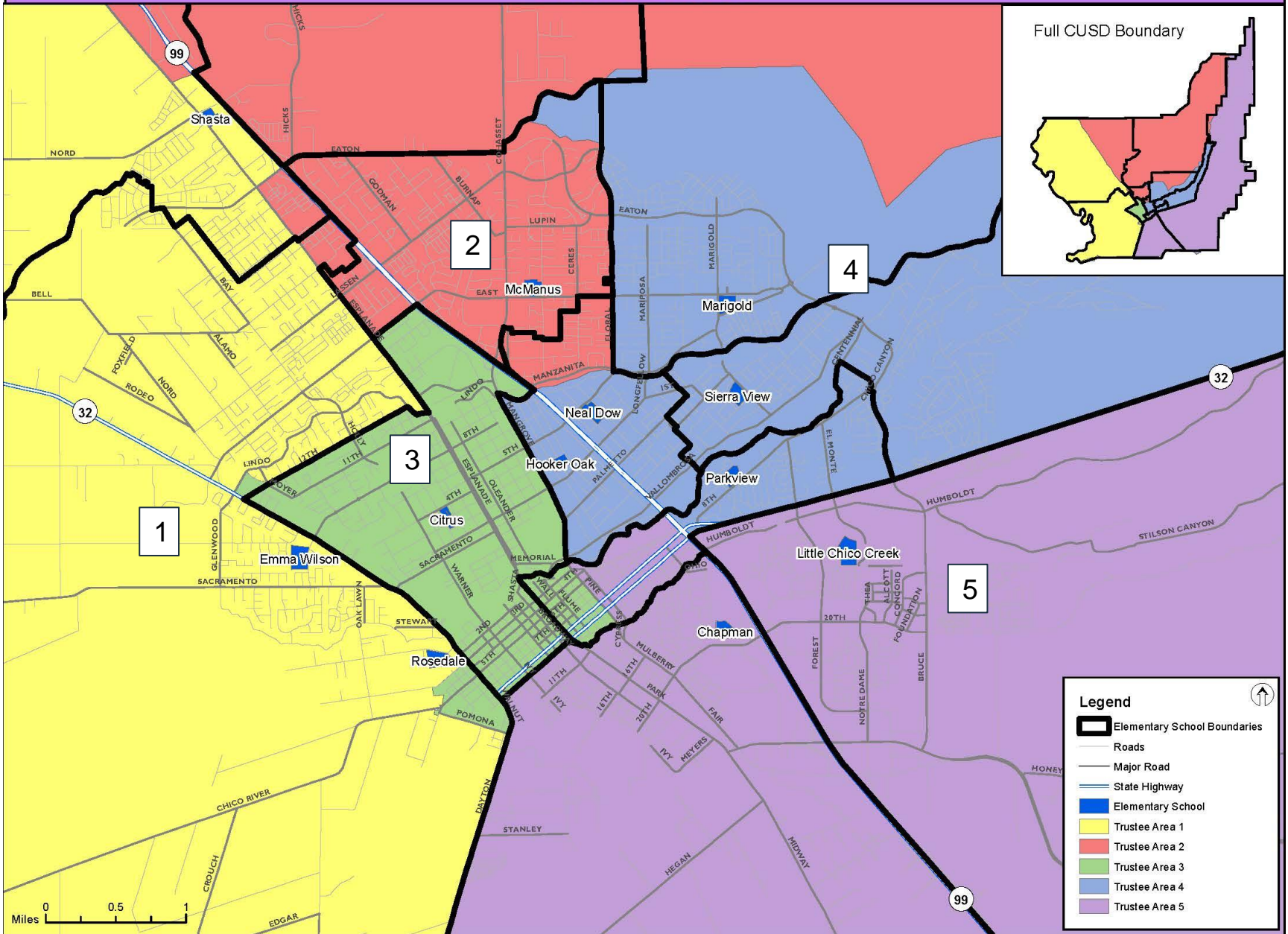
# Draft Trustee Area Map Option: Purple

## Chico Unified School District



# Draft Trustee Area Map Option: Purple

Chico Unified School District



**Legend**

- Elementary School Boundaries
- Roads
- Major Road
- State Highway
- Elementary School
- Trustee Area 1
- Trustee Area 2
- Trustee Area 3
- Trustee Area 4
- Trustee Area 5



# Criteria Data for Draft Trustee Area Maps



# Total Population by Race/Ethnicity

District-wide														
	Total Population							Voting Age Population						
	Population	% Hispanic	% White	% Asian	% Black	% All Other	% 2+ Races	Population	% Hispanic	% White	% Asian	% Black	% All Other	% 2+ Races
	120,119	19.3%	67.0%	4.0%	1.7%	1.8%	6.2%	96,964	17.5%	69.8%	4.0%	1.7%	1.7%	5.3%
Blue Map Option														
Trustee Area	Total Population							Voting Age Population						
	Population	% Hispanic	% White	% Asian	% Black	% All Other	% 2+ Races	Population	% Hispanic	% White	% Asian	% Black	% All Other	% 2+ Races
1	24,789	19.4%	67.8%	3.4%	1.4%	1.9%	6.1%	19,619	16.7%	71.3%	3.4%	1.4%	1.9%	5.4%
2	25,003	14.2%	73.0%	4.4%	1.0%	1.5%	5.9%	19,410	12.0%	76.5%	4.3%	1.0%	1.3%	4.9%
3	23,706	21.4%	65.2%	3.7%	2.1%	1.5%	6.1%	19,615	20.2%	67.3%	3.7%	2.0%	1.5%	5.2%
4	23,591	21.8%	63.8%	4.5%	2.3%	1.6%	6.1%	19,834	20.6%	65.8%	4.5%	2.3%	1.5%	5.2%
5	23,030	20.2%	64.9%	4.1%	1.6%	2.5%	6.7%	18,486	18.0%	68.3%	4.0%	1.6%	2.3%	5.8%
Green Map Option														
Trustee Area	Total Population							Voting Age Population						
	Population	% Hispanic	% White	% Asian	% Black	% All Other	% 2+ Races	Population	% Hispanic	% White	% Asian	% Black	% All Other	% 2+ Races
1	24,011	23.5%	62.6%	4.1%	2.5%	1.6%	5.7%	19,810	22.7%	64.3%	4.1%	2.4%	1.5%	5.0%
2	24,403	19.0%	68.2%	3.7%	1.5%	1.7%	6.0%	19,196	16.1%	71.9%	3.7%	1.4%	1.8%	5.2%
3	23,420	20.8%	64.4%	4.4%	1.8%	1.8%	6.8%	19,574	19.2%	67.2%	4.2%	1.8%	1.7%	5.9%
4	24,210	19.5%	66.6%	3.5%	1.5%	2.6%	6.4%	19,463	17.3%	69.7%	3.5%	1.6%	2.3%	5.6%
5	24,075	14.0%	73.3%	4.4%	1.1%	1.3%	6.0%	18,921	12.1%	76.4%	4.4%	1.0%	1.2%	4.8%
Purple Map Option														
Trustee Area	Total Population							Voting Age Population						
	Population	% Hispanic	% White	% Asian	% Black	% All Other	% 2+ Races	Population	% Hispanic	% White	% Asian	% Black	% All Other	% 2+ Races
1	24,278	20.6%	66.9%	3.6%	1.6%	1.5%	6.0%	19,368	18.6%	69.5%	3.7%	1.5%	1.5%	5.2%
2	23,469	24.8%	59.8%	4.8%	2.6%	1.6%	6.3%	20,126	23.8%	61.7%	4.7%	2.6%	1.5%	5.6%
3	23,633	17.9%	68.7%	3.6%	1.5%	2.0%	6.2%	18,722	15.4%	72.5%	3.3%	1.4%	2.0%	5.3%
4	24,850	13.4%	74.3%	4.1%	1.0%	1.4%	5.7%	19,526	11.5%	77.2%	4.3%	1.0%	1.3%	4.7%
5	23,889	20.2%	65.1%	4.0%	1.7%	2.4%	6.7%	19,222	18.0%	68.6%	3.9%	1.6%	2.2%	5.7%



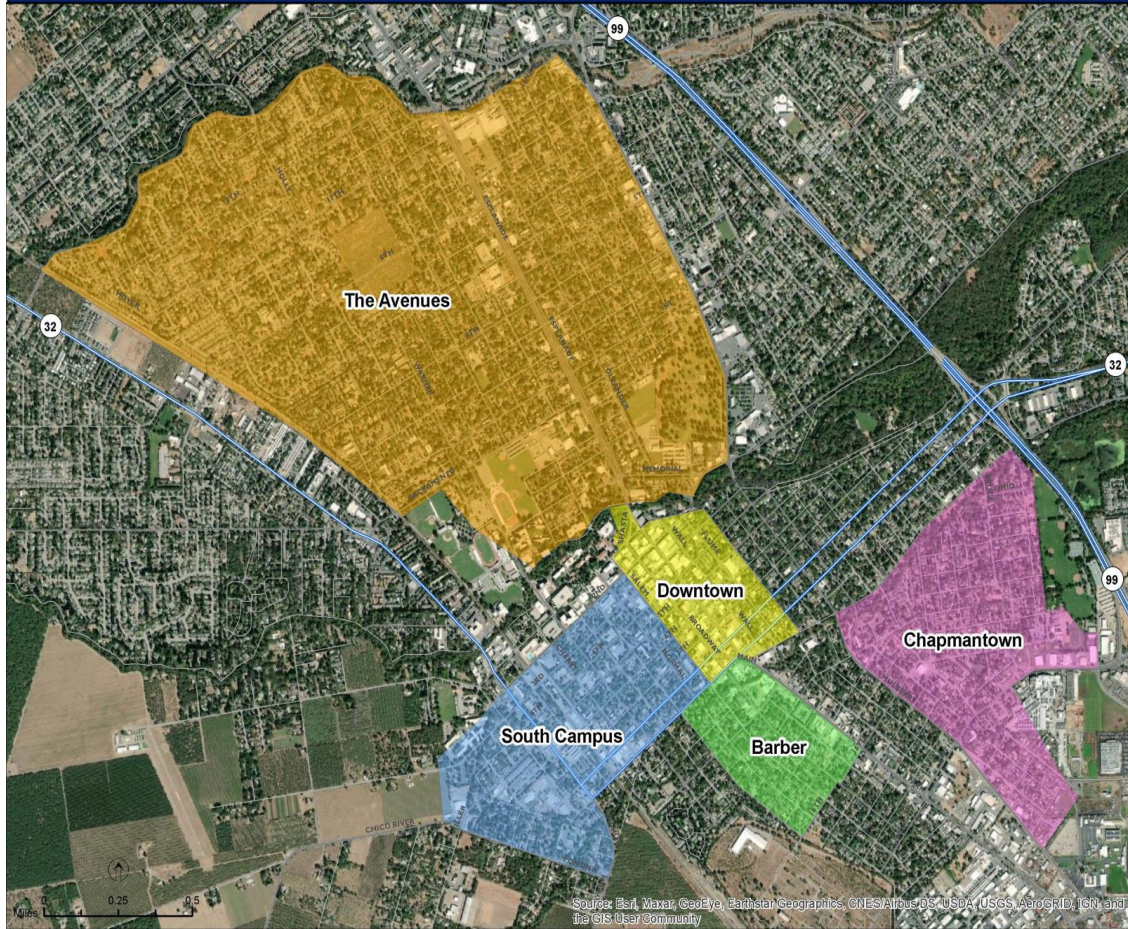
# Socioeconomic and Tenure Data

District-wide				
	Median Income	% FRPM	% Owners	% Renters
	\$61,000	49.4%	50.1%	49.9%
Blue Map Option				
Trustee Area	Median Income	% FRPM	% Owners	% Renters
1	\$57,000	51.5%	44.3%	55.7%
2	\$89,000	38.1%	65.9%	34.1%
3	\$59,000	47.5%	49.8%	50.2%
4	\$52,000	55.7%	45.2%	54.8%
5	\$52,000	59.7%	42.1%	57.9%
Green Map Option				
Trustee Area	Median Income	% FRPM	% Owners	% Renters
1	\$63,000	49.4%	48.6%	51.4%
2	\$65,000	49.9%	53.1%	46.9%
3	\$45,000	63.2%	36.3%	63.7%
4	\$57,000	56.2%	46.2%	53.8%
5	\$81,000	34.9%	64.8%	35.2%
Purple Map Option				
Trustee Area	Median Income	% FRPM	% Owners	% Renters
1	\$70,000	44.9%	55.1%	44.9%
2	\$41,000	67.0%	26.4%	73.6%
3	\$66,000	54.7%	52.0%	48.0%
4	\$81,000	33.4%	66.5%	33.5%
5	\$52,000	59.7%	42.7%	57.3%



# Analysis of Neighborhoods

Chico Neighborhoods  
Chico Unified School District



Source: Esri, Maxar, GeoEye, Earthstar Geographics, CNES/Airbus DS, USDA, USGS, AeroGRID, IGN, and the GIS User Community

Blue Map Option					
Trustee Area	Barber	Chapman-town	Down-town	South Campus	The Avenues
1					
2					
3			X	X	
4					X
5	X	X			

Green Map Option					
Trustee Area	Barber	Chapman-town	Down-town	South Campus	The Avenues
1				X	X
2					X
3			X	X	X
4	X	X			
5					

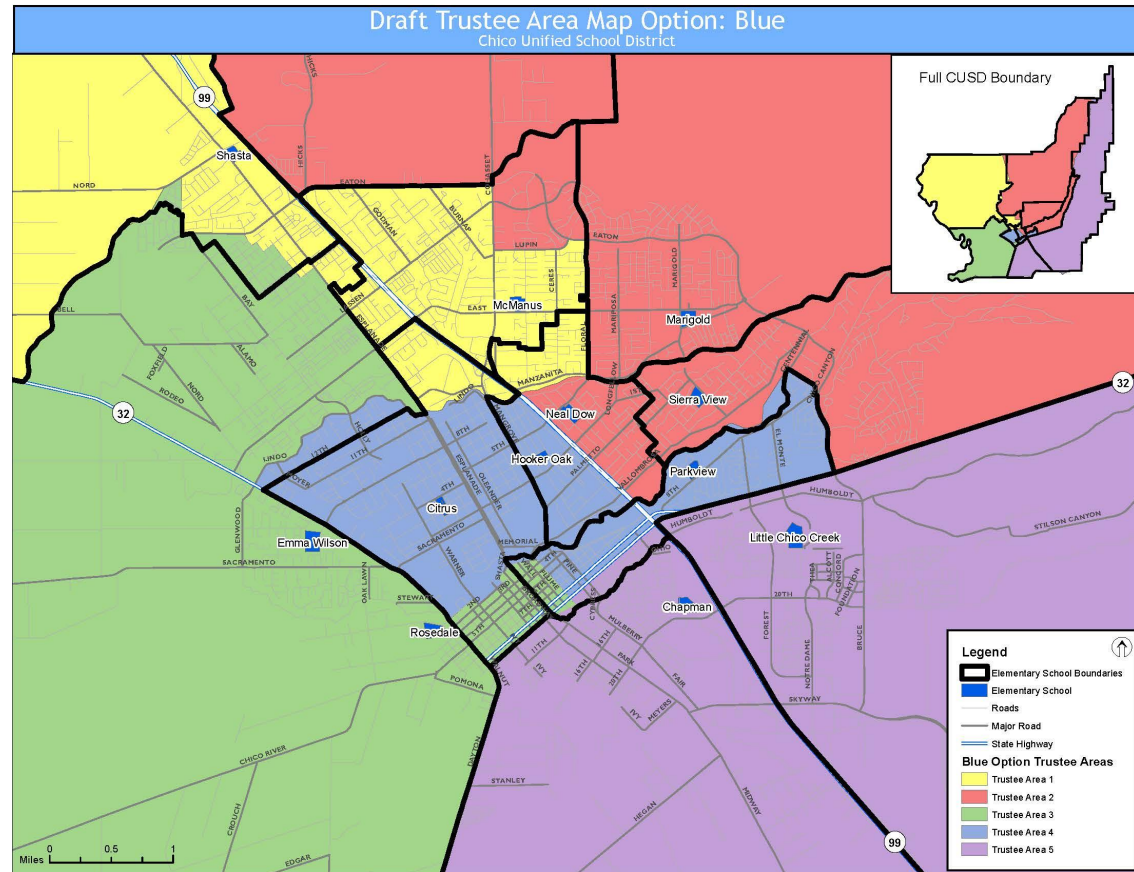
Purple Map Option					
Trustee Area	Barber	Chapman-town	Down-town	South Campus	The Avenues
1					X
2					
3			X	X	X
4					
5	X	X			

# Blue Map Student Enrollment Analysis

Elementary School	Blue 1	Blue 2	Blue 3	Blue 4	Blue 5
Chapman	2%	1%	2%	3%	22%
Citrus	4%	<1%	3%	32%	1%
Emma Wilson	6%	1%	52%	5%	1%
Little Chico Creek	2%	2%	1%	2%	40%
Marigold	3%	29%	3%	2%	2%
McManus	19%	9%	2%	2%	1%
Neal Dow	6%	10%	3%	6%	3%
Parkview	3%	5%	5%	19%	10%
Shasta	37%	4%	8%	1%	<1%
Sierra View	3%	24%	3%	4%	4%
Hooker Oak	6%	5%	6%	9%	3%
Rosedale	7%	7%	11%	14%	12%
Other	2%	1%	2%	2%	2%

Junior High School	Blue 1	Blue 2	Blue 3	Blue 4	Blue 5
Bidwell	71%	51%	24%	9%	9%
Chico Jr	18%	12%	61%	66%	28%
Marsh	9%	36%	12%	21%	60%
Other	2%	1%	2%	3%	3%

High School	Blue 1	Blue 2	Blue 3	Blue 4	Blue 5
Chico High	29%	24%	69%	73%	60%
Pleasant Valley	62%	69%	24%	17%	27%
Other	9%	7%	7%	10%	12%



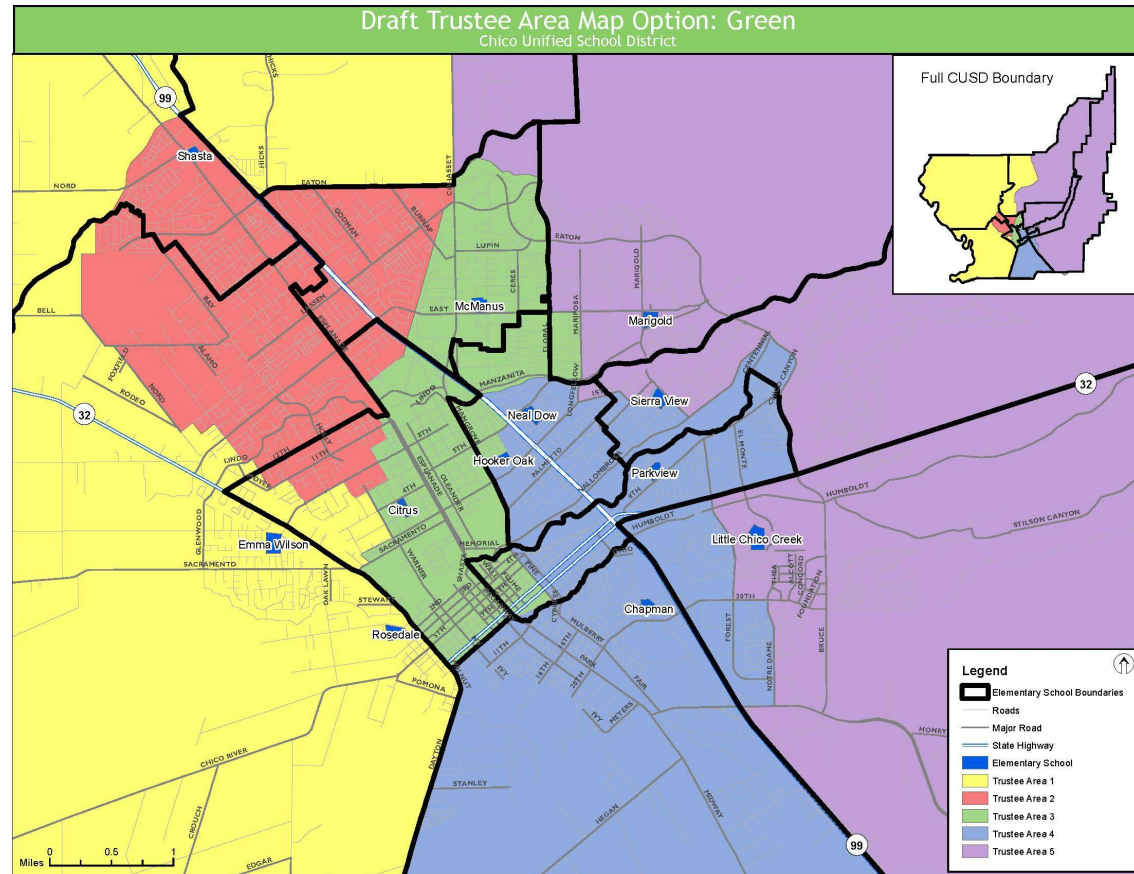
- Each column totals 100% and shows where the students who live in the Trustee Area are enrolled.
- This allows for a quick synopsis of which schools might correspond with some Trustee Areas independent of attendance boundaries.
- Note, students can be (and often are) enrolled at a school outside of their Trustee Area.
- For example, 37% of the elementary students in Blue Area 1 are enrolled at Shasta.

# Green Map Student Enrollment Analysis

Elementary School	Green 1	Green 2	Green 3	Green 4	Green 5
Chapman	2%	2%	2%	21%	1%
Citrus	15%	4%	15%	1%	<1%
Emma Wilson	30%	20%	3%	1%	1%
Little Chico Creek	1%	1%	3%	16%	20%
Marigold	2%	3%	6%	2%	30%
McManus	1%	13%	28%	1%	<1%
Neal Dow	3%	3%	12%	11%	4%
Parkview	3%	3%	5%	21%	5%
Shasta	23%	29%	1%	1%	1%
Sierra View	3%	4%	4%	9%	22%
Hooker Oak	4%	7%	9%	5%	4%
Rosedale	11%	8%	11%	11%	9%
Other	2%	2%	2%	1%	2%

Junior High School	Green 1	Green 2	Green 3	Green 4	Green 5
Bidwell	32%	52%	53%	15%	33%
Chico Jr	58%	34%	35%	38%	10%
Marsh	9%	12%	9%	44%	56%
Other	1%	2%	4%	4%	1%

High School	Green 1	Green 2	Green 3	Green 4	Green 5
Chico High	57%	50%	37%	60%	31%
Pleasant Valley	34%	43%	51%	29%	63%
Other	9%	8%	13%	11%	6%



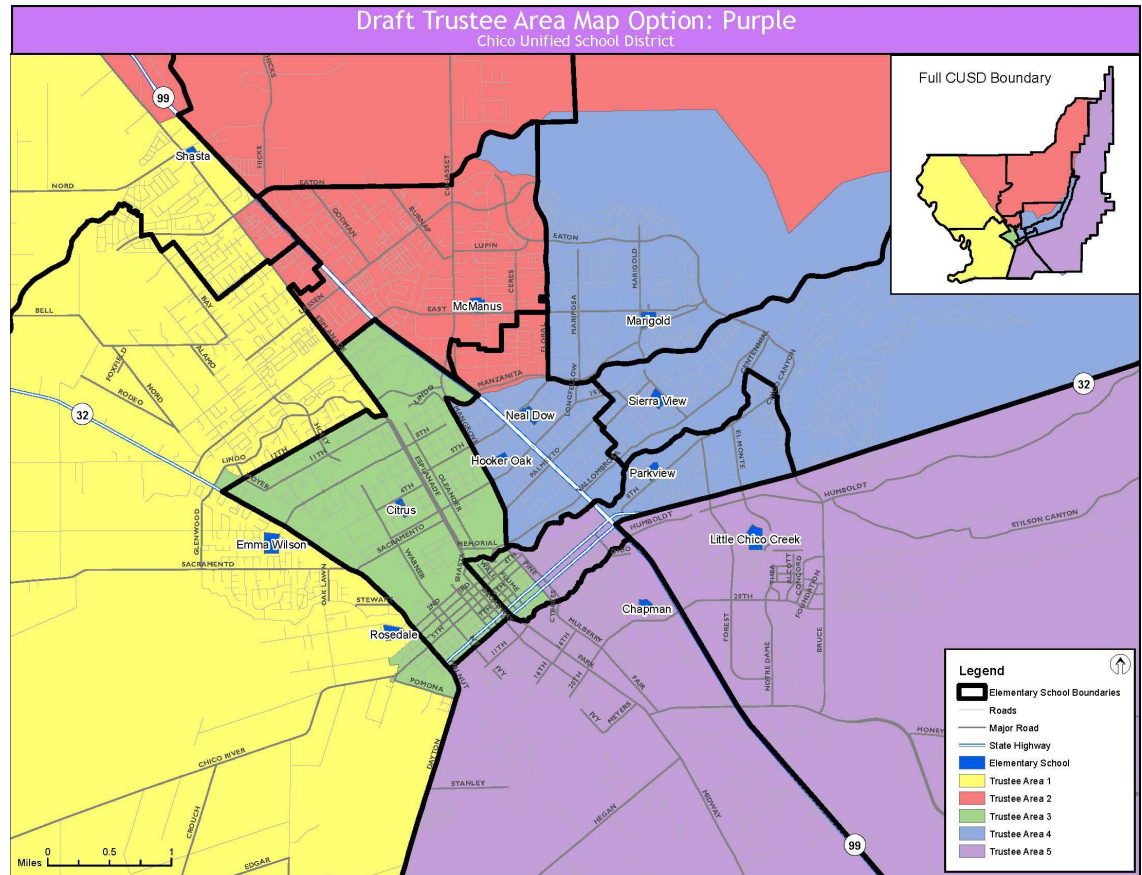
- Each column totals 100% and shows where the students who live in the Trustee Area are enrolled.
- This allows for a quick synopsis of which schools might correspond with some Trustee Areas independent of attendance boundaries.
- Note, students can be (and often are) enrolled at a school outside of their Trustee Area.
- For example, 30% of the elementary students in Green Area 1 are enrolled at Emma Wilson.

# Purple Map Student Enrollment Analysis

Elementary School	Purple 1	Purple 2	Purple 3	Purple 4	Purple 5
Chapman	1%	2%	4%	1%	21%
Citrus	1%	2%	42%	<1%	1%
Emma Wilson	37%	7%	10%	1%	1%
Little Chico Creek	1%	2%	2%	2%	39%
Marigold	2%	4%	2%	30%	2%
McManus	2%	30%	3%	<1%	1%
Neal Dow	3%	9%	3%	10%	3%
Parkview	3%	3%	6%	13%	11%
Shasta	31%	21%	1%	1%	<1%
Sierra View	3%	5%	3%	25%	4%
Hooker Oak	5%	7%	8%	6%	3%
Rosedale	9%	8%	14%	9%	12%
Other	2%	2%	2%	1%	2%

Junior High School	Purple 1	Purple 2	Purple 3	Purple 4	Purple 5
Bidwell	41%	73%	11%	37%	9%
Chico Jr	46%	16%	76%	18%	29%
Marsh	11%	9%	10%	44%	58%
Other	2%	2%	3%	2%	4%

High School	Purple 1	Purple 2	Purple 3	Purple 4	Purple 5
Chico High	59%	26%	73%	32%	61%
Pleasant Valley	34%	63%	15%	62%	27%
Other	6%	11%	13%	6%	12%



- Each column totals 100% and shows where the students who live in the Trustee Area are enrolled.
- This allows for a quick synopsis of which schools might correspond with some Trustee Areas independent of attendance boundaries.
- Note, students can be (and often are) enrolled at a school outside of their Trustee Area.
- For example, 37% of the elementary students in Green Area 1 are enrolled at Emma Wilson.

# FRPM Analysis by Elementary School

School	% FRPM Enrollment	% FRPM Residents
Chapman	90.4%	77.8%
Citrus	89.2%	71.1%
Emma Wilson	64.2%	54.0%
Little Chico Creek	69.8%	60.5%
Marigold	30.9%	29.1%
McManus	84.5%	69.9%
Neal Dow	49.0%	40.4%
Parkview	36.9%	50.6%
Shasta	32.6%	33.4%
Sierra View	19.1%	22.3%
Hooker Oak	40.4%	N/A
Rosedale	41.6%	N/A
CUSD	51.2%	



# Next Steps



# Proposed Timeline

Date	Action
September 1, 2021	Public Outreach Meeting #1
September 15, 2021	Public Outreach Meeting #2
October 20, 2021	Presentation of Draft Trustee Area Maps
November 3, 2021	First Hearing on Draft Maps
November 17, 2021	Second Hearing on Draft Maps after incorporating feedback from First Hearing.
By November 24, 2021	Final map options based on all Board and public feedback to be posted on District website
December 15, 2021	Board to adopt map
TBD	Approval of trustee area map by County Committee on School District Reorganization (County of Board of Education)
TBD	State Board of Education approval of CUSD waiver of election, which automatically establishes trustee area elections
TBD	The first election to use the trustee areas must be held more than 120 days after trustee areas are established by the State Board of Education

