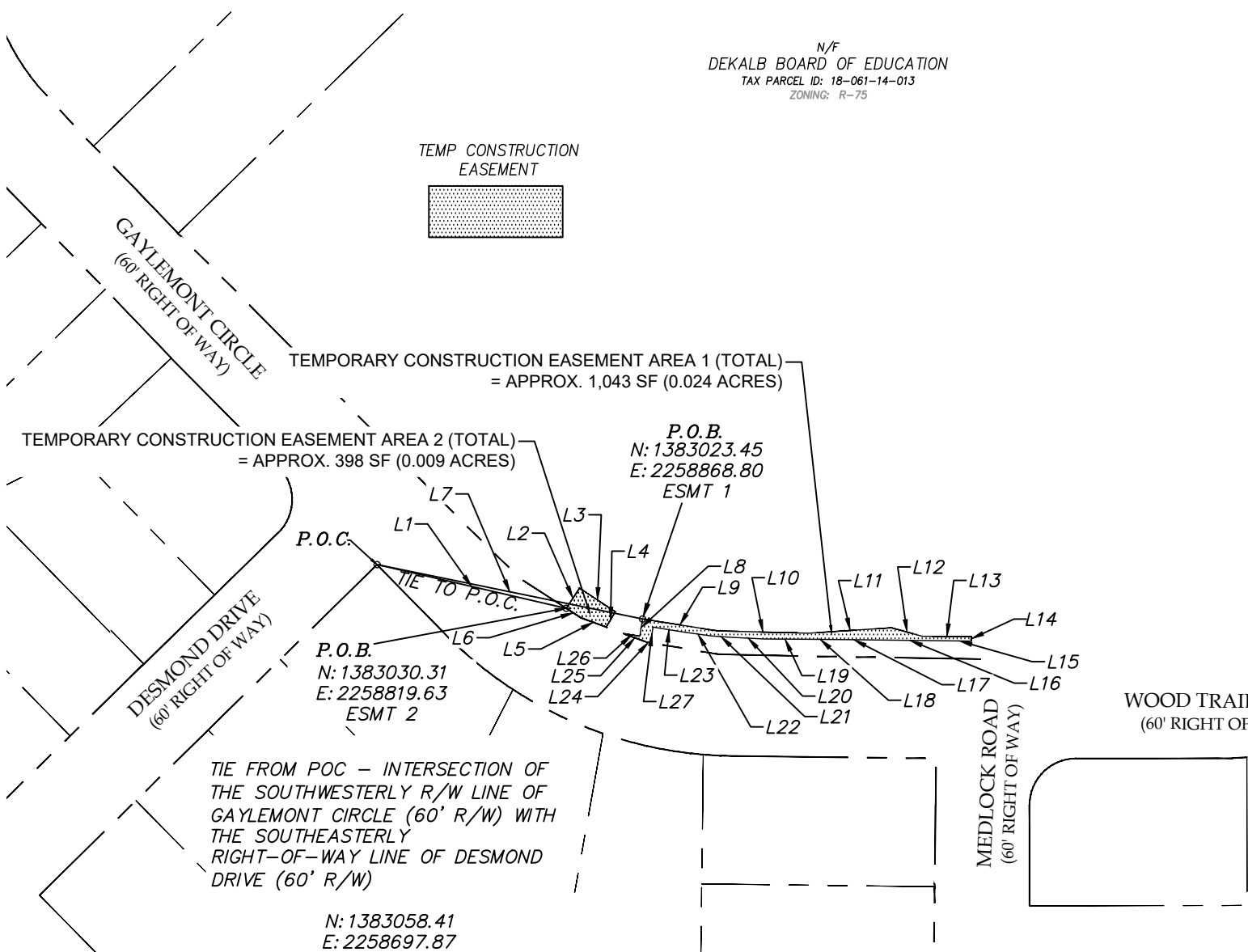
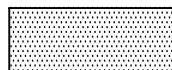




N/F
 DEKALB BOARD OF EDUCATION
 TAX PARCEL ID: 18-061-14-013
 ZONING: R-75

TEMP CONSTRUCTION
 EASEMENT



REVISION	DATE
REVISION 1	11/15/24
REVISION 2	5/1/25
REVISION 3	6/18/25



Planners & Engineers Collaborative+
 LAND PLANNING + LANDSCAPE ARCHITECTURE + CIVIL ENGINEERING
 ARBORISTS + SURVEYING & CONSTRUCTION + WATER RESOURCES

350 RESEARCH COURT PEACHTREE CORNERS, GEORGIA 30092
 (770)451-2741 WWW.PEC.PLUS
 C.O.A.-LSF000004

TEMPORARY TRAIL EASEMENT EXHIBIT
FOR
INTERNATIONAL COMMUNITY SCHOOL

SHEET 1 OF 2

COUNTY DEKALB
 STATE OF GEORGIA
 CITY OF
 LAND LOT(S) 61-63,100-102
 DISTRICT 18



DRAWN BY: NAV
 CHECKED BY: MCS
 FILE NO.: 23022.00
 DATE: 6/18/25
 SCALE: 1'=100'

J:\2023\2302200\SuDrawings\Exhibits\2302200_Dekalb Co Schools temp easement_NAV.dwg - NValentino - 6/17/2025 9:47 AM

J:\2023\2302200\Su\Drawings\Exhibits\2302200_DeKalbCo Schools temp easement_NAV.dwg - NValentino - 6/17/2025 9:47 AM

Line Table		
Line #	Length	Direction
L1	124.96	S77° 00' 16"E
L2	15.63	N33° 46' 34"E
L3	27.60	S56° 18' 52"E
L4	11.47	S31° 27' 17"W
L5	17.56	N69° 34' 41"W
L6	10.98	N56° 45' 51"W
L7	174.47	S78° 26' 31"E
L8	11.23	N09° 03' 20"E
L9	48.76	S80° 56' 40"E
L10	58.79	S88° 33' 45"E
L11	53.67	N86° 19' 35"E
L12	20.36	S74° 29' 35"E
L13	31.76	S89° 46' 13"E
L14	3.01	S00° 42' 39"W
L15	15.30	N89° 17' 21"W
L16	48.61	N89° 17' 21"W
L17	23.53	N89° 28' 20"W
L18	19.86	N89° 28' 52"W
L19	25.58	N89° 33' 53"W
L20	21.95	N87° 09' 01"W

Line Table		
Line #	Length	Direction
L21	13.00	N85° 57' 28"W
L22	16.91	N82° 14' 07"W
L23	20.82	N80° 44' 33"W
L24	2.84	N80° 19' 40"W
L25	15.64	N69° 34' 41"W
L26	10.68	S80° 56' 40"E

Line Table		
Line #	Length	Direction
L27	10.21	S09° 03' 20"W



Planners & Engineers Collaborative+

LAND PLANNING + LANDSCAPE ARCHITECTURE + CIVIL ENGINEERING
ARBORISTS + SURVEYING & CONSTRUCTION + WATER RESOURCES

350 RESEARCH COURT PEACHTREE CORNERS, GEORGIA 30092
(770)451-2741 WWW.PEC.PLUS
C.O.A.-LSF000004

**TEMPORARY TRAIL EASEMENT EXHIBIT
FOR
INTERNATIONAL COMMUNITY SCHOOL**

SHEET 2 OF 2

COUNTY DEKALB
STATE OF GEORGIA
CITY OF
LAND LOT(S) 61-63,100-102
DISTRICT 18



DRAWN BY: NAV
CHECKED BY: MCS
FILE NO.: 23022.00
DATE: 6/16/25
SCALE: 1"=100'