

Druid Hills High School

Figure 1 - Heat Map DHHS Student Addresses

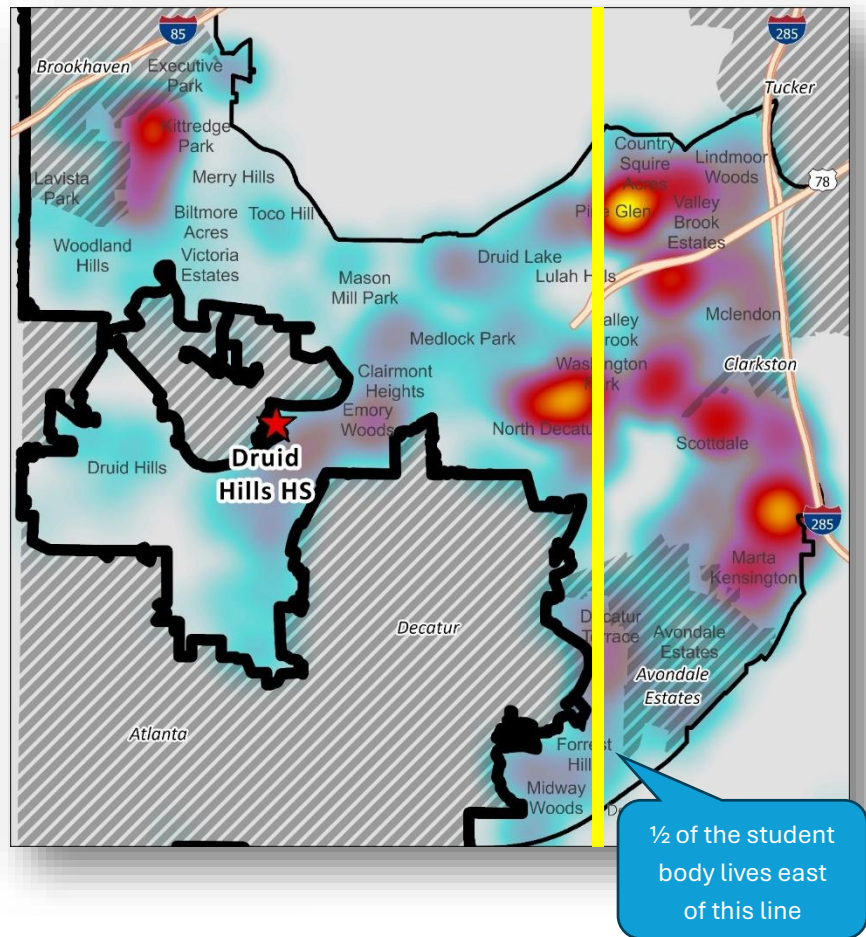


Figure 2 - DHHS Students by Feeder Elementary Attendance Area

| Feeder Area | DHHS Students | % |
|------------------------------------|---------------|-------------|
| Avondale ES | 411 | 28% |
| Briar Vista ES | 181 | 13% |
| Fernbank ES | 276 | 19% |
| Laurel Ridge ES | 216 | 15% |
| McLendon ES | 245 | 17% |
| Other (outside of attendance area) | 118 | 8% |
| Total | 1,447 | 100% |

Figure 3 - Planned Housing Development

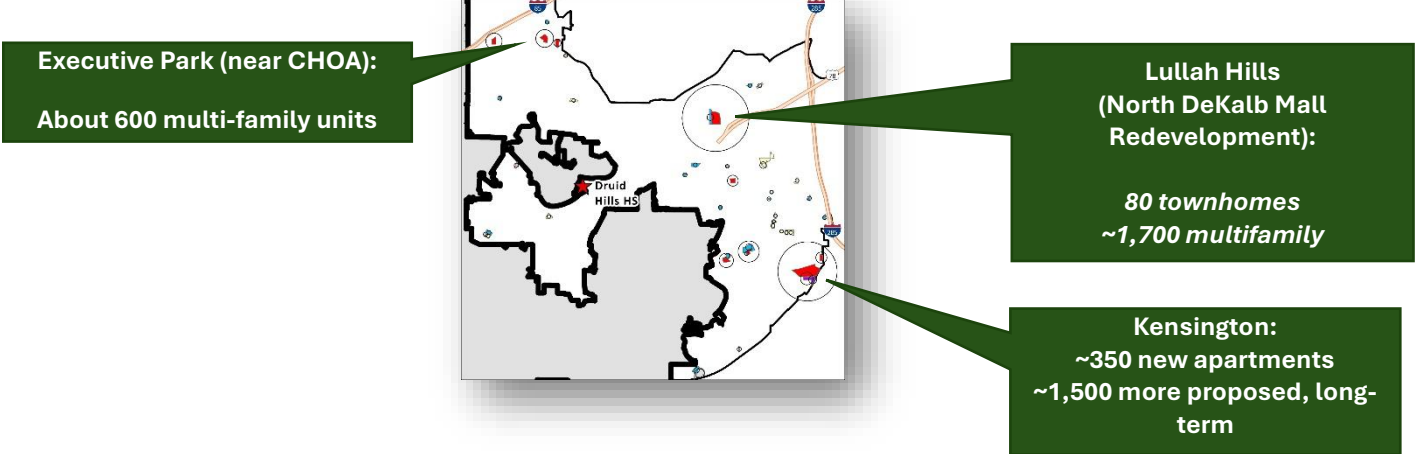


Figure 4 - DHHS Attendance Area - Preliminary Forecast (DCSD Staff)

| Year | K | 1 | 2 | 3 | 4 | 5 | 6 | 7 | 8 | 9 | 10 | 11 | 12 | 9-12 Total |
|------|-----|-----|-----|-----|-----|-----|-----|-----|-----|-----|-----|-----|-----|------------|
| 2021 | 409 | 367 | 395 | 405 | 359 | 375 | 362 | 375 | 319 | 416 | 337 | 316 | 287 | 1,356 |
| 2022 | 411 | 423 | 384 | 417 | 396 | 359 | 363 | 361 | 375 | 393 | 376 | 324 | 304 | 1,397 |
| 2023 | 415 | 424 | 442 | 378 | 422 | 400 | 320 | 387 | 345 | 433 | 364 | 355 | 298 | 1,450 |
| 2024 | 465 | 439 | 439 | 478 | 394 | 439 | 400 | 327 | 402 | 444 | 391 | 371 | 319 | 1,525 |
| 2025 | 475 | 470 | 453 | 439 | 460 | 415 | 442 | 410 | 347 | 476 | 344 | 367 | 322 | 1,509 |
| 2026 | 435 | 488 | 479 | 453 | 440 | 470 | 399 | 444 | 419 | 407 | 411 | 333 | 328 | 1,480 |
| 2027 | 435 | 447 | 498 | 479 | 453 | 450 | 452 | 401 | 454 | 491 | 352 | 399 | 298 | 1,540 |
| 2028 | 435 | 447 | 456 | 497 | 480 | 464 | 432 | 455 | 410 | 533 | 425 | 341 | 357 | 1,655 |
| 2029 | 435 | 447 | 456 | 456 | 498 | 490 | 446 | 435 | 465 | 481 | 461 | 412 | 305 | 1,658 |
| 2030 | 435 | 447 | 456 | 456 | 456 | 510 | 472 | 448 | 444 | 545 | 416 | 446 | 368 | 1,775 |

Druid Hills High School

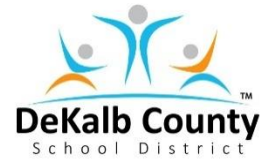
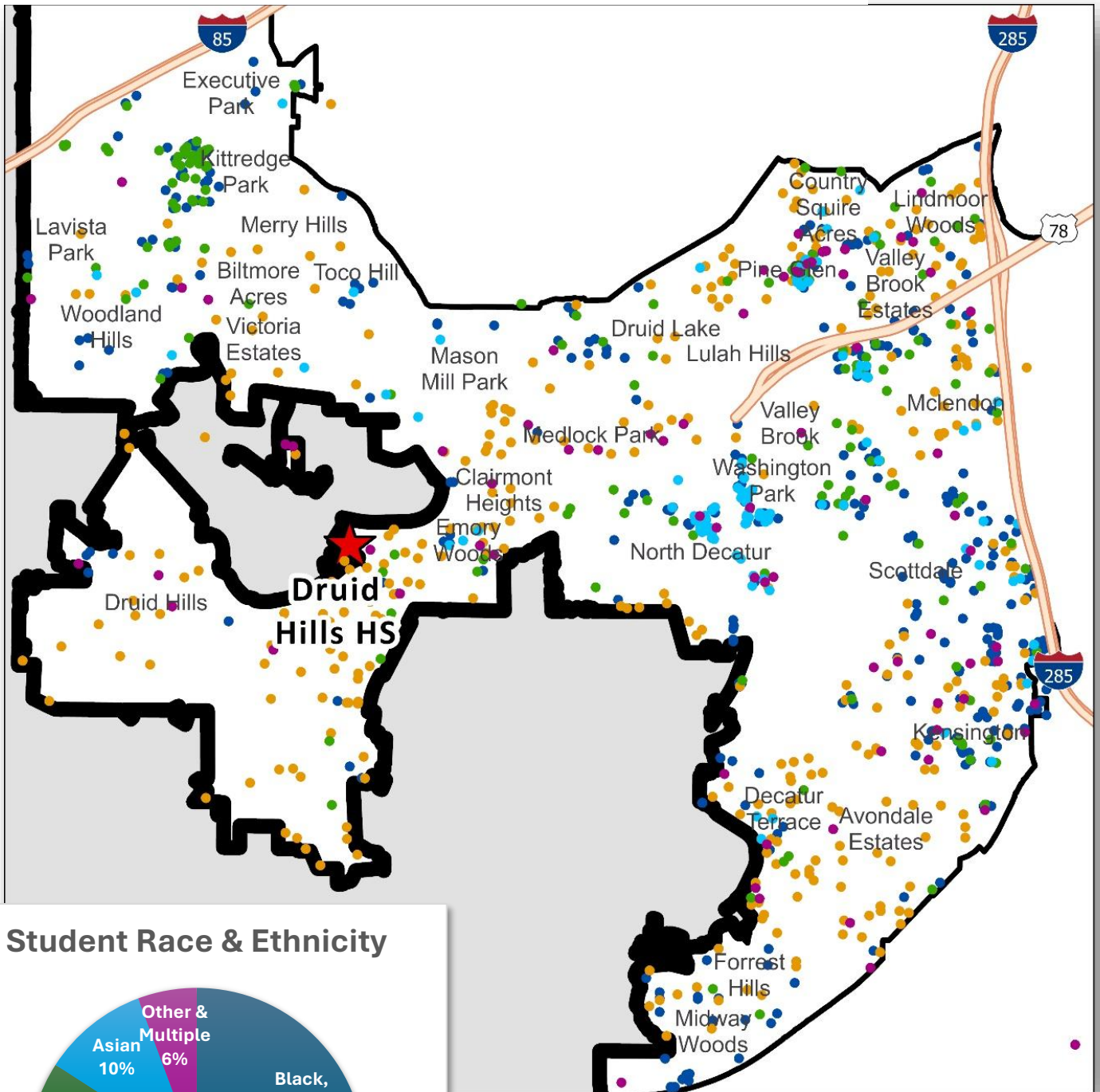
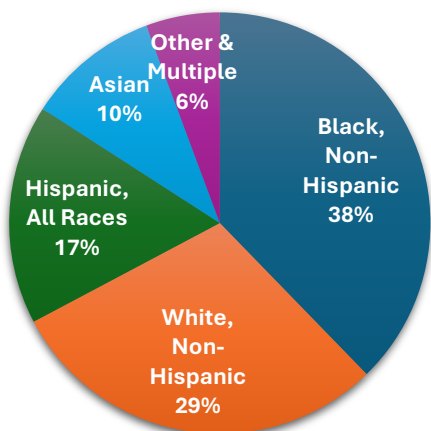


Figure 5 - DHHS Students by Race & Ethnicity Category



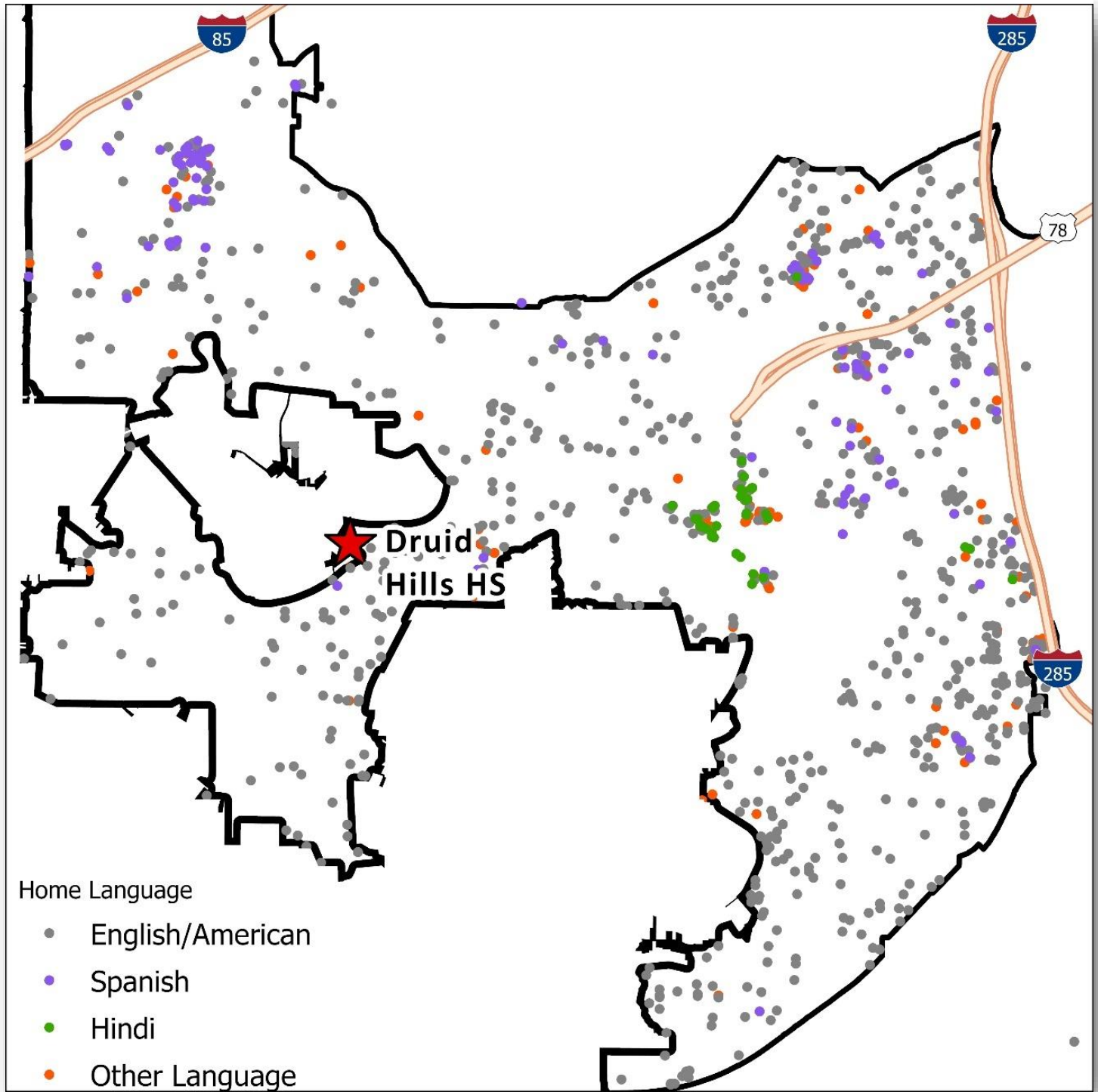
Student Race & Ethnicity



Druid Hills High School



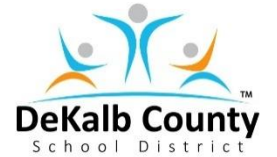
Figure 6 - DHHS students by Home Language



Home Language

- English/American
- Spanish
- Hindi
- Other Language

Druid Hills High School



| Enrollment History and Preliminary Forecast | | | | | |
|---|-------|-----|-----|-----|-------|
| | Grade | | | | |
| Year | 9 | 10 | 11 | 12 | Total |
| 2021 | 408 | 331 | 310 | 289 | 1,338 |
| 2022 | 390 | 350 | 314 | 295 | 1,349 |
| 2023 | 421 | 358 | 349 | 298 | 1,426 |
| 2024 | 427 | 367 | 363 | 311 | 1,468 |
| 2025 | 433 | 331 | 353 | 330 | 1,447 |
| 2026 | 380 | 390 | 329 | 325 | 1,423 |
| 2027 | 448 | 333 | 376 | 294 | 1,451 |
| 2028 | 492 | 404 | 332 | 346 | 1,575 |
| 2029 | 452 | 439 | 399 | 304 | 1,594 |
| 2030 | 506 | 399 | 429 | 360 | 1,693 |

Figure 7 - Historic Enrollment and Preliminary Forecast

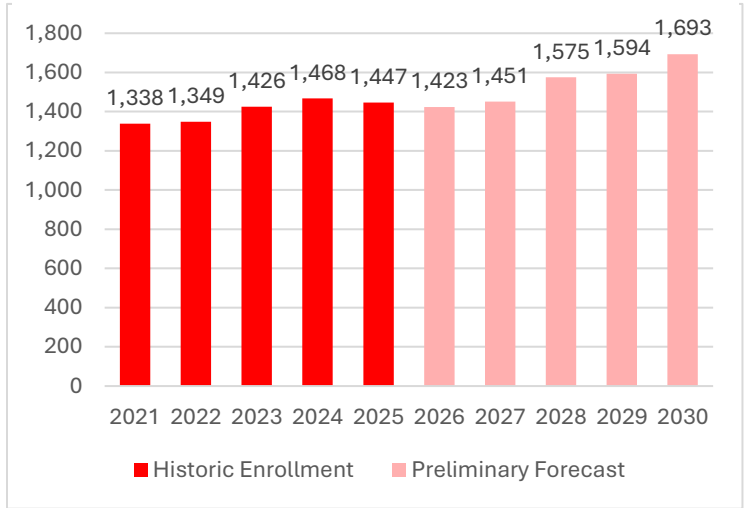


Figure 8 - DHHS Attendance Area - Enrollment and Preliminary Forecast

| Year | K | 1 | 2 | 3 | 4 | 5 | 6 | 7 | 8 | 9 | 10 | 11 | 12 | 9-12 Total |
|------|-----|-----|-----|-----|-----|-----|-----|-----|-----|-----|-----|-----|-----|------------|
| 2021 | 409 | 367 | 395 | 405 | 359 | 375 | 362 | 375 | 319 | 416 | 337 | 316 | 287 | 1,356 |
| 2022 | 411 | 423 | 384 | 417 | 396 | 359 | 363 | 361 | 375 | 393 | 376 | 324 | 304 | 1,397 |
| 2023 | 415 | 424 | 442 | 378 | 422 | 400 | 320 | 387 | 345 | 433 | 364 | 355 | 298 | 1,450 |
| 2024 | 465 | 439 | 439 | 478 | 394 | 439 | 400 | 327 | 402 | 444 | 391 | 371 | 319 | 1,525 |
| 2025 | 475 | 470 | 453 | 439 | 460 | 415 | 442 | 410 | 347 | 476 | 344 | 367 | 322 | 1,509 |
| 2026 | 435 | 488 | 479 | 453 | 440 | 470 | 399 | 444 | 419 | 407 | 411 | 333 | 328 | 1,480 |
| 2027 | 435 | 447 | 498 | 479 | 453 | 450 | 452 | 401 | 454 | 491 | 352 | 399 | 298 | 1,540 |
| 2028 | 435 | 447 | 456 | 497 | 480 | 464 | 432 | 455 | 410 | 533 | 425 | 341 | 357 | 1,655 |
| 2029 | 435 | 447 | 456 | 456 | 498 | 490 | 446 | 435 | 465 | 481 | 461 | 412 | 305 | 1,658 |
| 2030 | 435 | 447 | 456 | 456 | 456 | 510 | 472 | 448 | 444 | 545 | 416 | 446 | 368 | 1,775 |

Larger Kindergarten Cohorts are resulting in larger 9th grades, 9 years later

About 11% attend schools other than Druid Hills HS