



# DCSD Facility Scenarios for Feedback

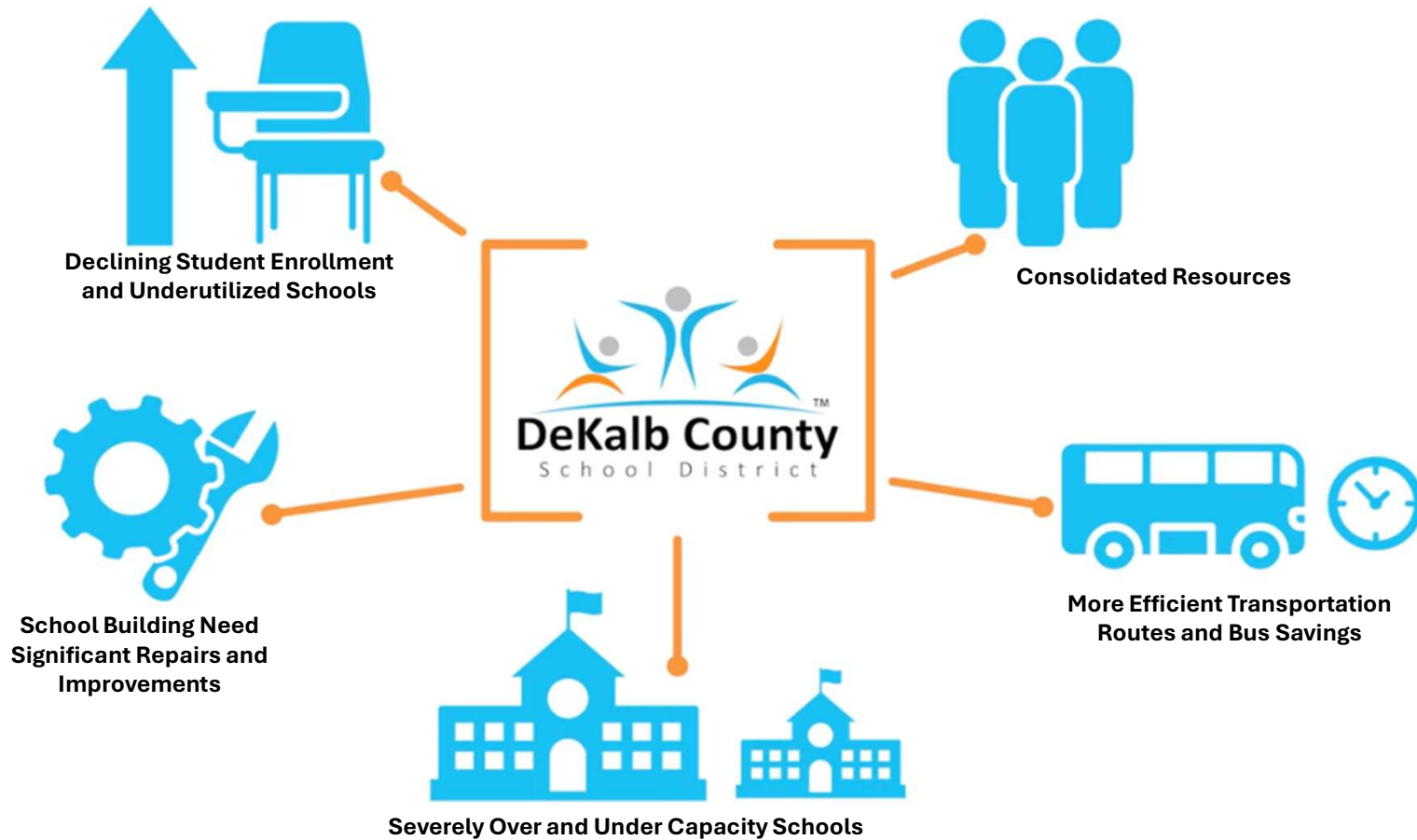
# The Students Are Why

The DeKalb County School District (DCSD) is built for 110,000 students. Today we serve 92,000, and enrollment is projected to decline further.

The Student Assignment Project (SAP) is **our commitment to invest resources where they matter most, in classrooms with students**, not in empty seats. **This is about being educationally focused and cost avoidance, creating a district where every child has access to strong academic programs, well-resourced schools, and meaningful opportunities to learn and grow, regardless of where they live.**

SAP's work and community feedback will shape DCSD for the next generation. This is our moment to analyze the data, listen to our communities, and design a district that is more efficient, inclusive, and stronger.

# Five Reasons Why



# What have we been doing?

- We presented the initial scenarios to the SAP Committee on 2/11 at the AIC.
- Launched online feedback survey in 13 languages
  - We have collected over 3,000 online survey responses to date.
- We have started to host virtual and in person community meetings
  - Virtual meeting on 2/23 had around 140 participants
  - In person meeting at AIC had around 50 participants
- We will continue to host virtual and in-person sessions this week
  - 2/24 @ Cedar Grove
  - 2/25 @ MLK
  - 2/26 @ Cross Keys

# What we are hearing?

- Requests for certainty on boundaries and programs.
- Comments around wanting to maintain small schools.
- Concerns that “high-performing” schools are in consideration to be closed or repurposed.
- How did it come to this point?
- Questions around rationale for each schools proposed for closure or repurpose.

## What is next?

- Survey closes for Round 1 of feedback on March 8.
- We will continue to review and consider feedback.
- We will develop Round 2 scenarios and present to the Board during the week of 3/16.
- Round 2 Community feedback session are scheduled for the week of 3/23.

# What will Round 2 Scenarios look like?

- Cluster-specific
- Different grade band configurations based on community feedback from round one.
- More clarity around alternative use for buildings proposed to close.
- Overlay of capital improvement plan.
  - Rebuilds, modernizations, and other capital improvement

# Board Feedback

- Is there anything that you have seen that is just too much at this point?
- Should anything be off the table as we move into Round 2.