



COOPERATIVE STRATEGIES

COMPLETE FINANCIAL & DEMOGRAPHIC PLANNING FOR EDUCATION

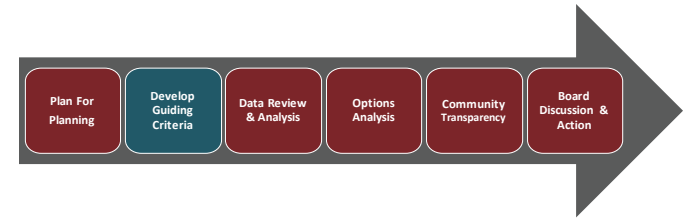
COLUMBIA PUBLIC SCHOOLS
ELEMENTARY ATTENDANCE
AREA RECOMMENDATION

JUNE 14, 2021

▶ **BOUNDARY PLANNING
PROCESS**



▶ OUR GUIDING PRINCIPALS



GUIDING PRINCIPALS:

- Attendance areas do change and will continue to change. This work is part of a regular review of district enrollment patterns.
- The attendance area should anticipate future growth of neighborhoods. A walkable and bikeable school is important, but may not always be possible.
- The attendance area seeks to reflect the composition of the Columbia Public School community.
- The board recognizes the power of a school to create community. Accessibility for families is important (volunteering and attending school functions are easier when the school is near).
- Consider time students spend on a bus and distance traveled to and from school.
- Consider attendance areas boundary lines that follow natural/manmade boundaries.
- Consider a transfer policy that allows 5th graders to remain at their previous school and policies that allow siblings to remain.

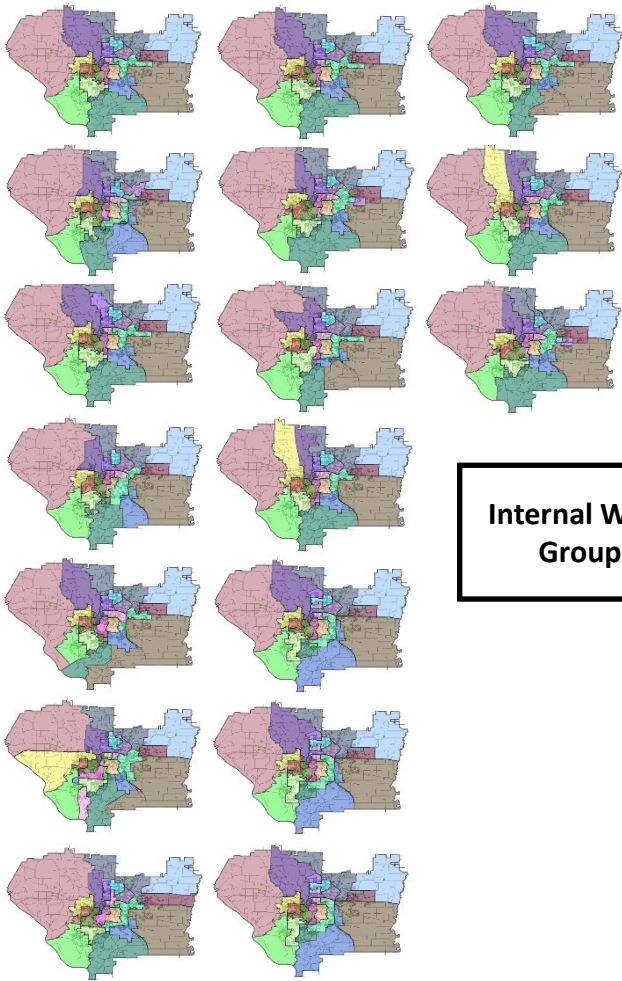
► HOW WE GOT HERE

Winter/Spring
2020

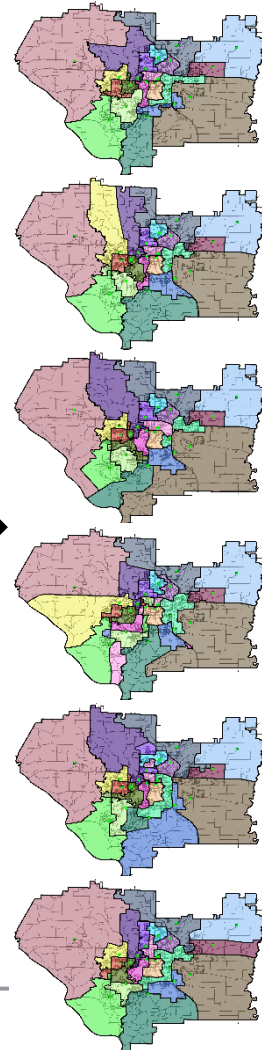
Summer 2020

Spring 2021

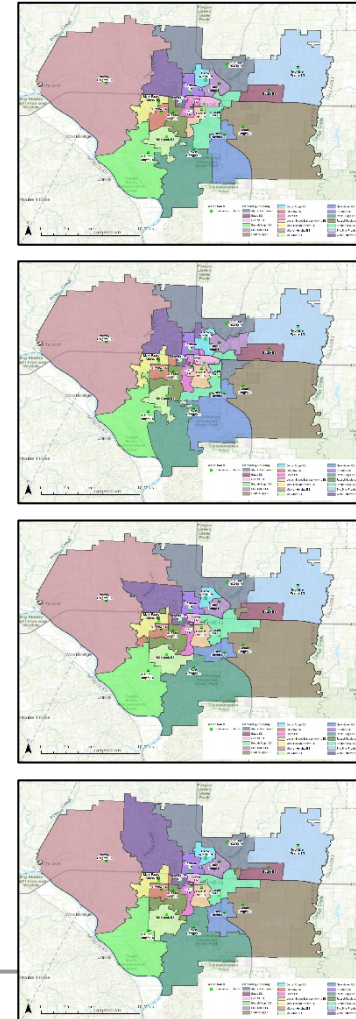
Late Spring 2021



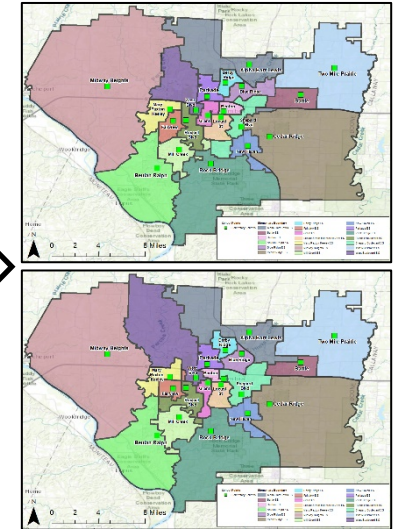
Internal Work
Group



Focus
Groups

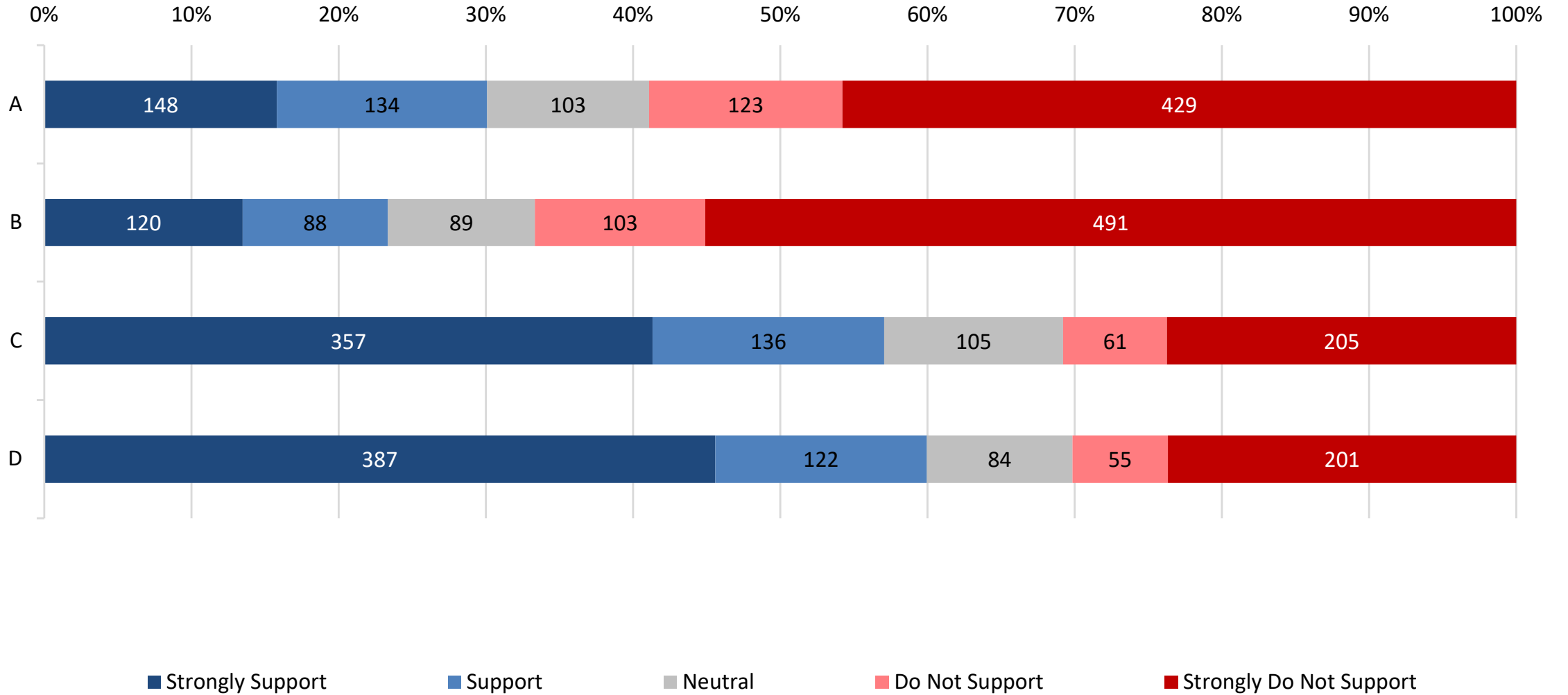


Community
Feedback



Add'l
Feed-
back

► COMMUNITY MEETING SURVEY RESULTS



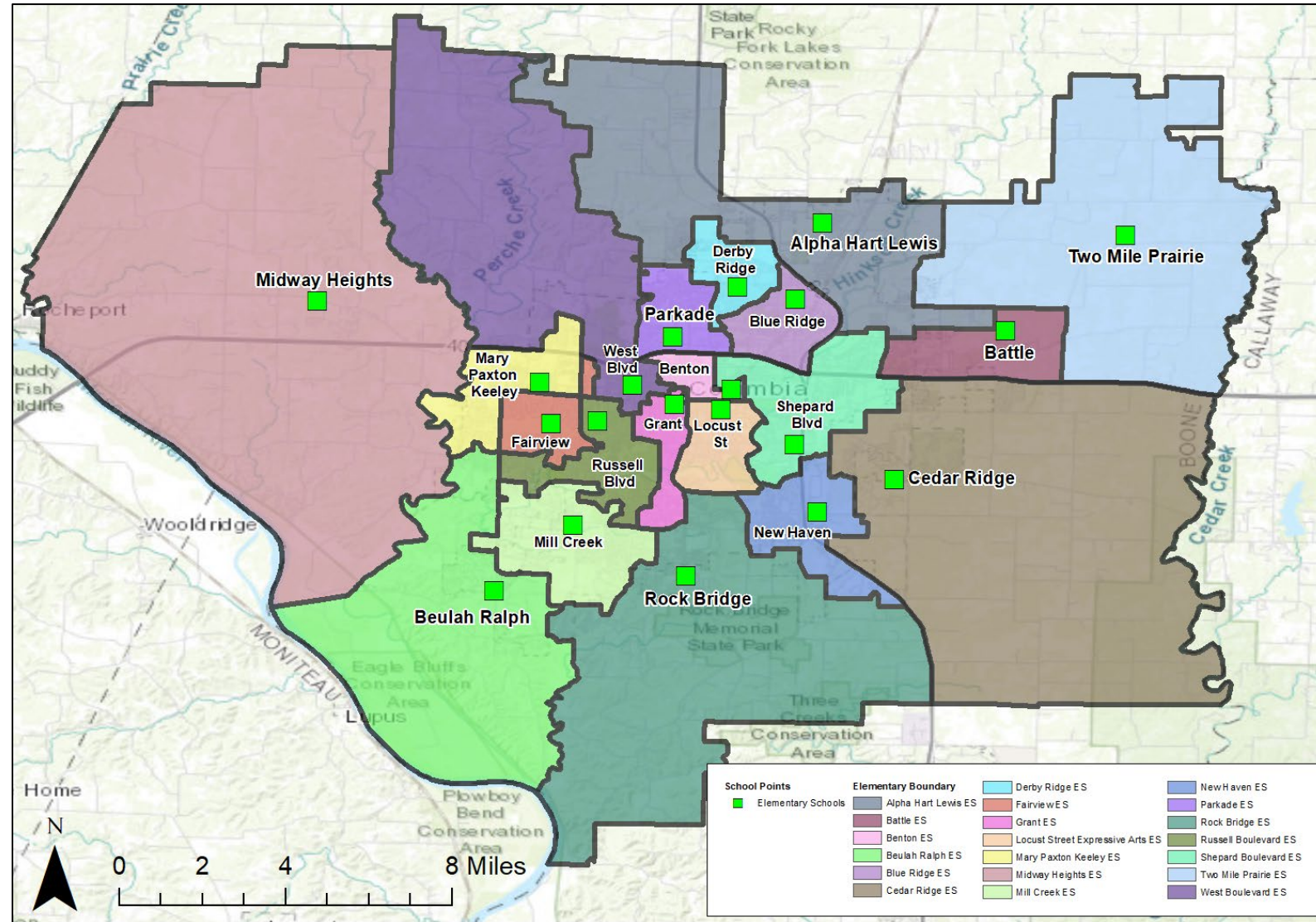
A group of five diverse children, three boys and two girls, are running joyfully across a grassy field. They are all wearing backpacks, suggesting they are on their way to school. The children are dressed in casual clothing like t-shirts, jeans, and shorts. In the background, a large, multi-story school building with many windows is visible, along with some trees. The overall atmosphere is bright and energetic.

RECOMMENDATION

► RECOMMENDATION: REVISED SCENARIO 2A

PHASE II - 2022-23

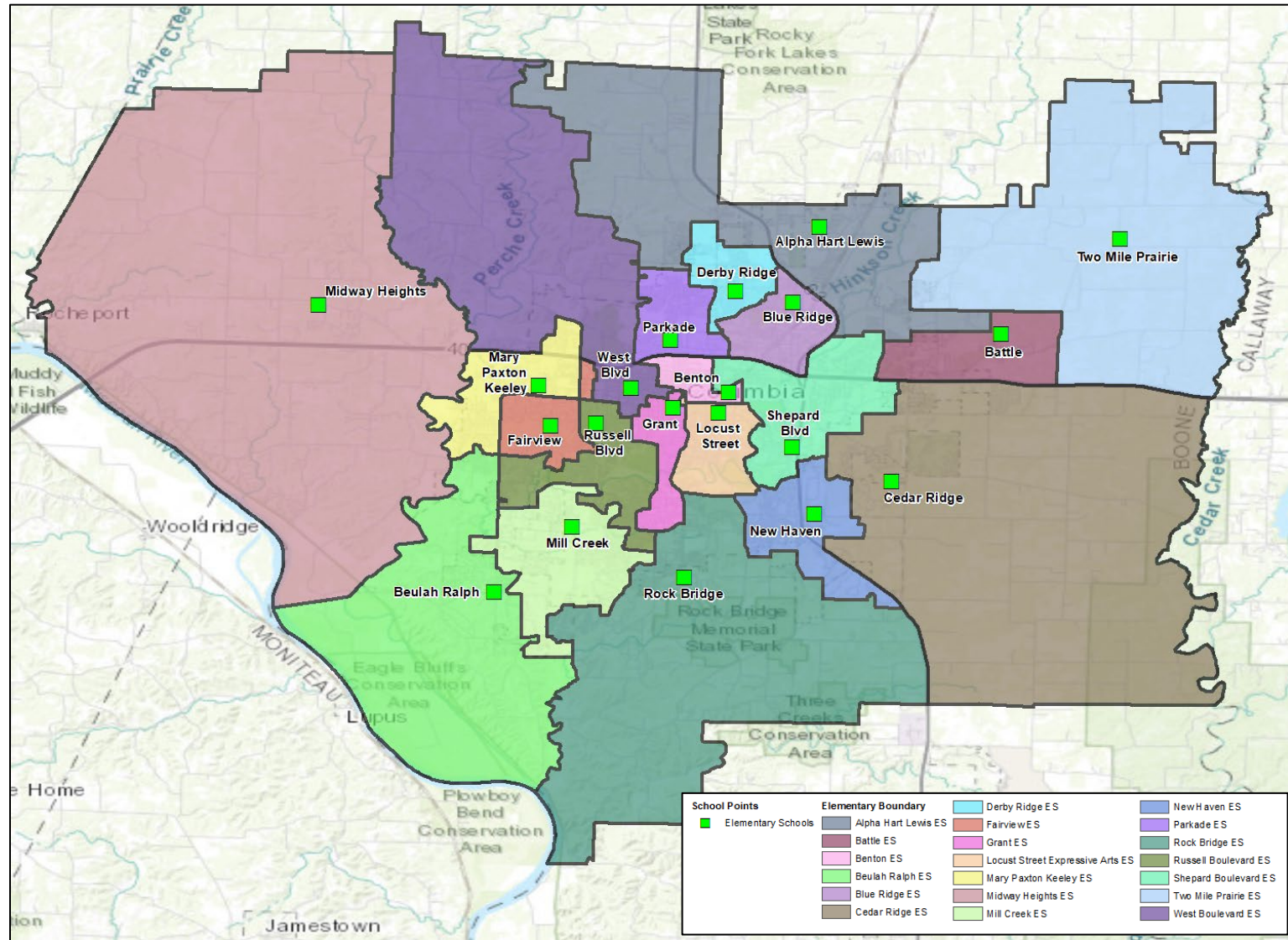
RECOMMENDATION - Phase II				
School	Capacity (No Trailers)	Live-In Enrollment	Utilization	Low SES %
Alpha Hart Lewis ES	650	558	86%	58%
Battle ES	450	417	93%	56%
Benton ES	260	134	52%	81%
Beulah Ralph ES	650	636	98%	21%
Blue Ridge ES	500	462	92%	66%
Cedar Ridge ES	650	520	80%	39%
Derby Ridge ES	556	479	86%	62%
Fairview ES	550	506	92%	28%
Grant ES	375	333	89%	36%
Locust Street Expressive Arts ES	250	97	39%	59%
Mary Paxton Keeley ES	723	683	94%	32%
Midway Heights ES	295	227	77%	28%
Mill Creek ES	673	686	102%	17%
New Haven ES	293	262	89%	56%
Parkade ES	478	440	92%	46%
Rock Bridge ES	650	573	88%	30%
Russell Boulevard ES	650	468	72%	25%
Shepard Boulevard ES	652	554	85%	59%
Two Mile Prairie ES	195	167	86%	34%
West Boulevard ES	438	343	78%	60%
TOTAL	9,938	8,545	86%	42%



► RECOMMENDATION: REVISED SCENARIO 2A

PHASE III – 2023-24

RECOMMENDATION – Phase III				
School	Capacity (No Trailers)	Live-In Enrollment	Utilization	Low SES %
Alpha Hart Lewis ES	650	558	86%	58%
Battle ES	450	417	93%	56%
Benton ES	260	134	52%	81%
Beulah Ralph ES	650	623	96%	21%
Blue Ridge ES	500	462	92%	66%
Cedar Ridge ES	650	520	80%	39%
Derby Ridge ES	556	479	86%	62%
Fairview ES	550	506	92%	28%
Grant ES	375	333	89%	36%
Locust Street Expressive Arts ES	250	97	39%	59%
Mary Paxton Keeley ES	723	683	94%	32%
Midway Heights ES	295	227	77%	28%
Mill Creek ES	673	616	92%	16%
New Haven ES	293	262	89%	56%
Parkade ES	478	440	92%	46%
Rock Bridge ES	650	573	88%	30%
Russell Boulevard ES	650	551	85%	25%
Shepard Boulevard ES	652	554	85%	59%
Two Mile Prairie ES	195	167	86%	34%
West Boulevard ES	438	343	78%	60%
TOTAL	9,938	8,545	86%	42%



► RECOMMENDATION: REVISED SCENARIO 2A

- No new areas are impacted; some areas may be assigned to a school that was not within the first round of scenarios
- Most schools at 60% or more low SES is left slightly under-utilized (in the 80%'s)
- No islands (Fairview north of Broadway is connected)
- Growth around Gans Rd pointed to Rock Bridge (instead of New Haven)
- Areas with potential growth (Rock Bridge, Cedar Ridge, Midway Heights) have some space available
- 900 K-5 students moved = 10.5%
 - 732 K-4 students

