



FCUSD and the International Baccalaureate February 17 Board Meeting

Historical Enrollment

- Declining enrollment at Mitchell

- 2009/10 - 857
- 2010/11 - 789
- 2011/12 - 758
- 2012/13 - 716
- 2013/14 - 700 (Mitchell Becomes an IB “Candidate School”)
- 2014/15 - 738 (Mitchell Authorized as an IB World School)
- 2015/16 - 784
- 2016/17 - 818
- 2017/18 - 828
- 2018/19 - 907
- 2019/20 - 933
- 2020/21 - 884
- 2021/22 - 803
 - UPC 417 / UPP 51.9%

- Enrollment at Mills

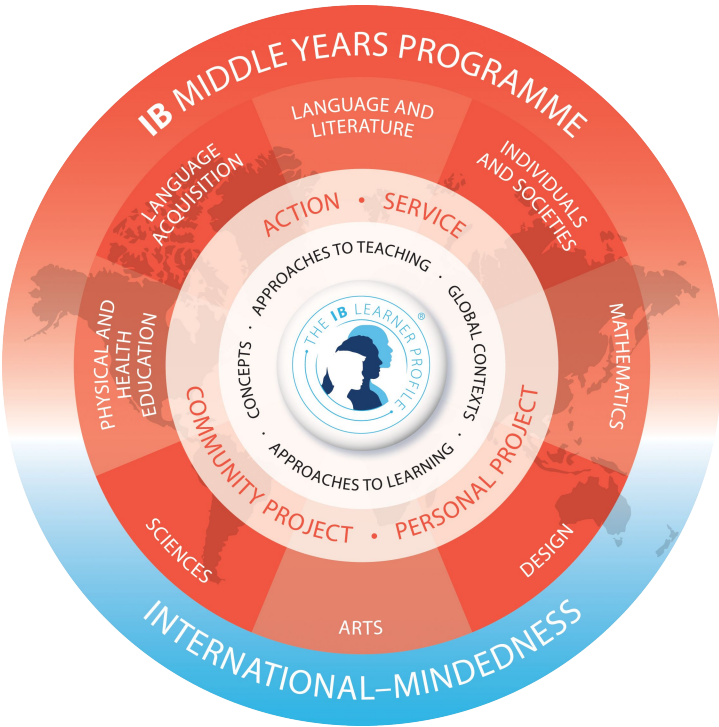
- 2009/10 - 808
- 2010/11 - 821
- 2011/12 - 788
- 2012/13 - 817
- 2013/14 - 786
- 2014/15 - 747
- 2015/16 - 702
- 2016/17 - 738
- 2017/18 - 772
- 2018/19 - 769
- 2019/20 - 781
- 2020/21 - 763
- 2021/22 - 745

- UPC 579 / UPP 77.7%

Enrollment at CHS:

- 2009/10 - 2016 (Declined each year with the exception of an increase of 28 student in 2014/15)
- 2016 - Present CHS has increase enrollment each year with the exception of a decline of 4 students in 2019/20
- Low: 2016/17 - 1,692 2021/22: 1,973
 - UPC 1,130 / UPP 57.3%

IB Middle Years Programme - MtMS & CHS



Instructional Difference

- Concept-Inquiry based
- Grounded in concepts with a focus on global contexts
 - Teachers use key concepts to teach content within a global context
- Ongoing formative and summative assessment practices used to determine achievement levels
- Structured unit design
- World Language and Arts is required
 - Prior to 2020/2021 Spanish and French was offered
- Standards-based grading (rubric)

Capstone Experience

- ◆ 10th grade Personal Project

Access

- **MtMS from 2013-2019 ALL students participated in full program at MtMS preparing them fully for MYP at CHS**

IB Diploma Programme Data Trends

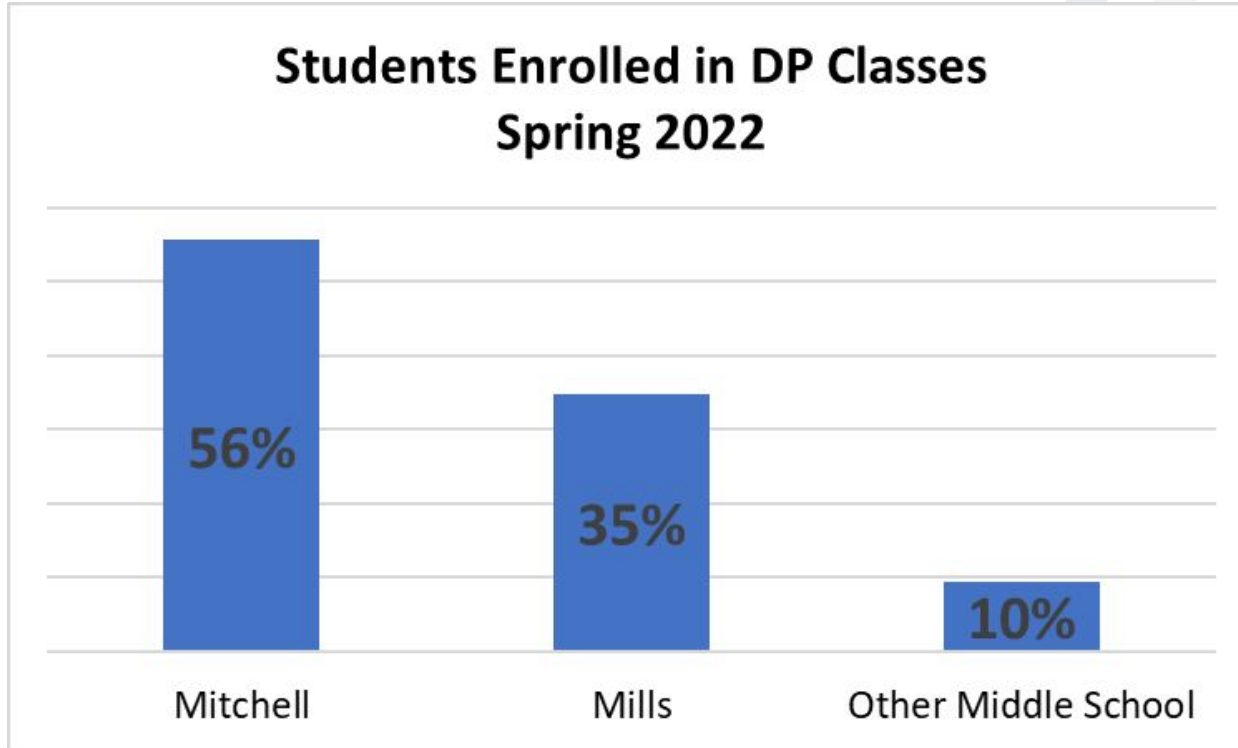
- More students each year are accessing DP level courses.
- Average score on DP exams consistently increasing. (Internal Exams Only in 2020)
- Regular PD and collaboration for faculty
- Strong research, writing, and critical thinking skills.
- A strong Middle Years Program has positively contributed to the success of students at CHS.

Why Was The 7 Period Day Reduced

- Seven Period Day was reduced primarily as a cost saving initiative.
- The hope was that offering zero periods would still allow a significant number of students to fully participate in the MYP Program.
- Zero period has not proven a viable option for the majority of students at Mitchell Middle School.
- The district originally budgeted for ten zero period classes, we have never been able to fill more than six and the projection for the 2022 - 2023 school year is three (Approximately 210 students and 105 students respectively.)

Diploma Classes Enrollment

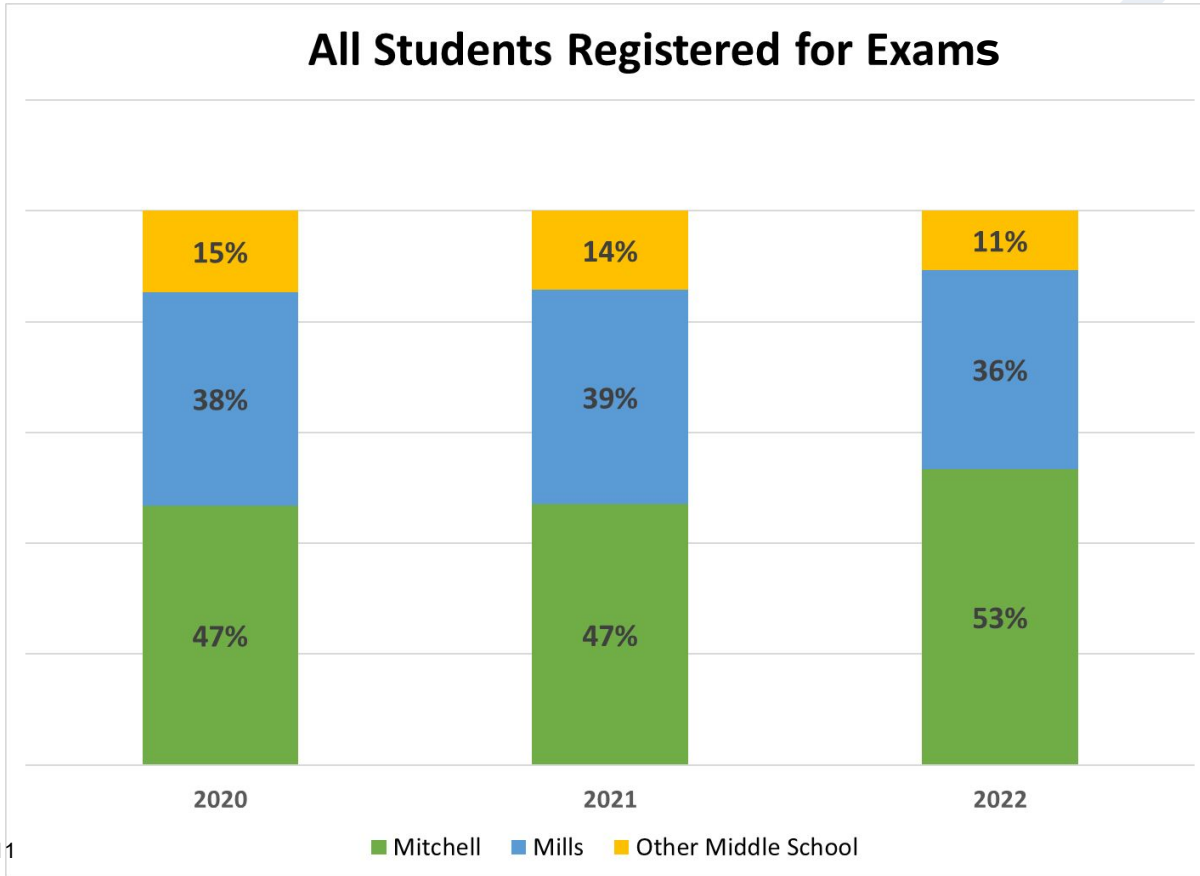
- All DP courses (next three slides) are Junior and Senior level classes



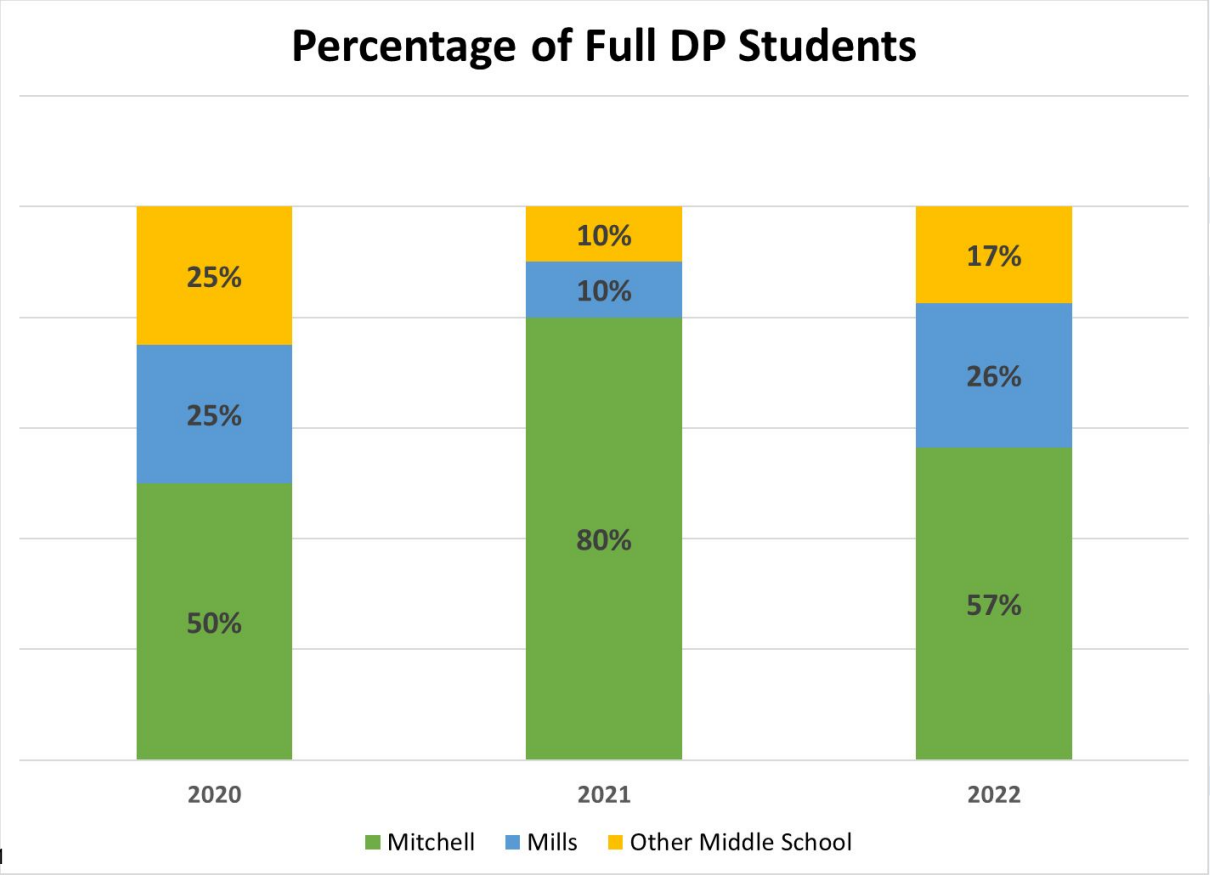
*Students do not need to be registered for the exam or Full DP to take these classes

*The percentages are based all students currently enrolled in the DP classes

Participation in DP Courses



Full Diploma Programme





Proposed Next Steps: Mitchell

- Return to fully supporting the DP/CP feeder programs by returning Mitchell Middle School to a seven period day, thus allowing **ALL** students access to the full Middle Years Program
- Fiscal Impact of returning Mitchell to a 7 period day: \$266,000 paid for from Supplemental Funds
 - Total direct supplemental allocation would increase to \$698k, which is 5.95% of all budgeted supplemental funds
 - Note funding allocations do not include services provided to the sites through district supplemental allocations such as SEL, ADP and other staff as well as support contracts.

Future Visioning for Mills



- School Overview, Programs and Initiatives Board Presentation April 28th.
- Curriculum and Instruction Department works with Mills Administration, Faculty and Staff on potential programmatic focuses during the 2022 - 2023 school year to present to the board for consideration and implementation.
 - Total direct supplemental allocation for Mills is \$470k, which would be 4.01% of all budgeted supplemental funds with increase to Mitchell
 - Note funding allocations do not include services provided to the sites through district supplemental allocations such as SEL, ADP, and other staff as well as support contracts.



Thank you!
iGracias!
Merci!