

Progress of the Facilities Work Group

Hallsville School District

September 15, 2021



Presentation Overview

- Work Group Membership
- Goals
- Recent Facilities Project History
- Community Input
- Facility Needs and Prioritized Facility Needs
- Phased Implementation



Work Group Overview & Goals

- Formed in Spring 2021
- Comprised of various stakeholders
 - Faculty, staff, and administrators from all buildings
 - Parents
 - Board members



Work Group Overview & Goals

- Goals
 - Review and discuss community input
 - Review and discuss status of facilities
 - Identify additional needs and possibilities
 - Secure high-level cost estimates
 - Revise the 2014 facilities plan document
 - Updated plan will be provided to BOE



Recent Facilities Project History

- Facilities plan updated in 2014
- Construction of science wing, strength and conditioning center concluded in 2015
- Passage of \$7 million bond issue in April 2018
- Purchase of operations and activities building
- Primary wing and gym completed in 2020
- Additional projects: MS/HS partial reroofing, security cameras, PA system, telephones, demo of old maintenance bldg, restroom improvements



2021 Facilities Priorities Worksheet

FACILITIES PRIORITIES WORKSHEET				
IDENTIFIED FACILITIES NEEDS				
Priority	Item	Department	Cost Estimate	Description/Comment
*	Second set of security doors	District		At main entrances in Intermediate, Middle, and High Schools
*	Replace south wing of MS building	Middle School		
*	Asphalt repair to parking lot	Primary School		Entire lot probably needs to be replaced to to improper installation
	Evaluate boilers chillers	Primary School		Ensure that boilers and chiller system have capacity to meet building needs
	Add classrooms to existing PS wings	Primary School		
	Paint conference rooms and staff restroom	Primary School		
	Repair sidewalk leading to playground	Primary School		Trip hazard, currently covered with rubber mats
	Second grade thermostats	Primary School		Confirm operating correctly
	Gym storage room	Primary School		Confirm completed to spec - Paper on floor?
	Check PS gym fire extinguisher locations	Primary School		
*	Transition security cameras from MS/HS	IS/PS		Old cameras need to be removed and relocated to elementary buildings
*	Replace boiler and chiller system	Intermediate		System is 25 years old, maintenance is ongoing and costly, one chiller has failed
*	Replace exterior door locking mechanisms	Intermediate		
	Emergency exit door in office area	Intermediate		
	Paint office and remaining two hallways	Intermediate		
	Add window in principal's office	Middle School		All rooms should have a secondary exit for safety and security
	Electrical system capacity in north hall	Middle School		Breakers trip frequently
	Broken windows	Middle School		Various, throughout building
	Repair in art storage closet	Middle School		
	Repair or regrade east courtyard entrance	Middle School		Water entry under doors during heavy rains
	Leaking window in library media center	Middle School		
	Replace carpet with tile in 8th math room	Middle School		



Community Survey

- Fall 2020 distributed to residents within Hallsville School District boundaries
- Administered and report provided at no fee to the district through Patron Insight small school grant
- Focused on the perception of the district and perceived facility needs



Community Survey

- Using 4-point scale, respondents ranked their top 4 priorities
- From this, three priorities were identified
 - Replace and expand middle school (3.18)
 - Install second set of secure doors (2.9)
 - Install turf at the football field (2.54)



Community Survey

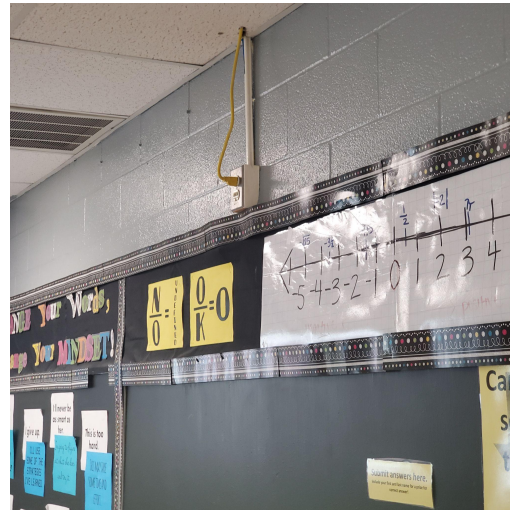
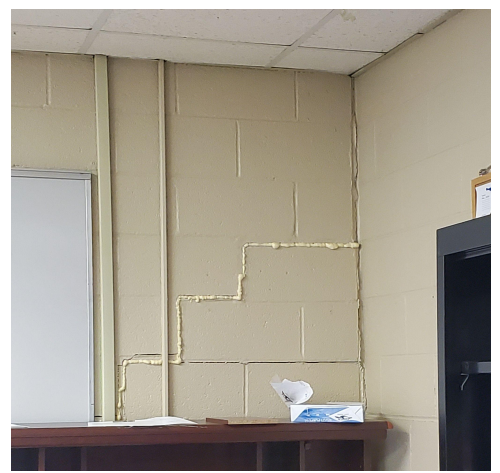
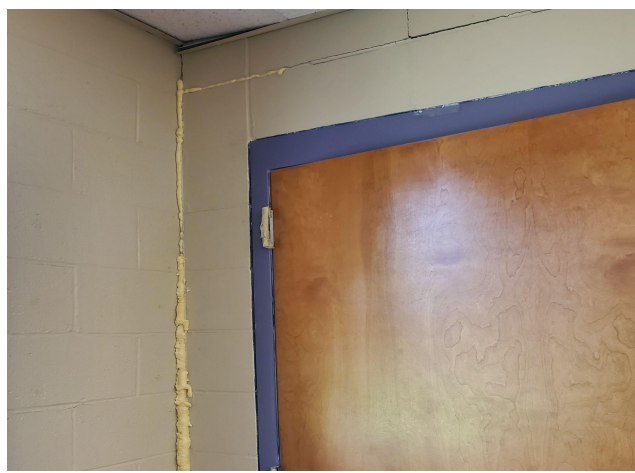
- Additional Priorities
 - Baseball/Softball field upgrades
 - Technology Upgrades
 - Specific facility requests such as expanded Fine Arts
 - Restroom Improvements
 - Traffic flow on campus
- Projects that should be eliminated (Top 4)
 - Athletic projects, with 71% selecting turf at the football field
 - District will need to offer additional information about the necessity of these projects if selected.

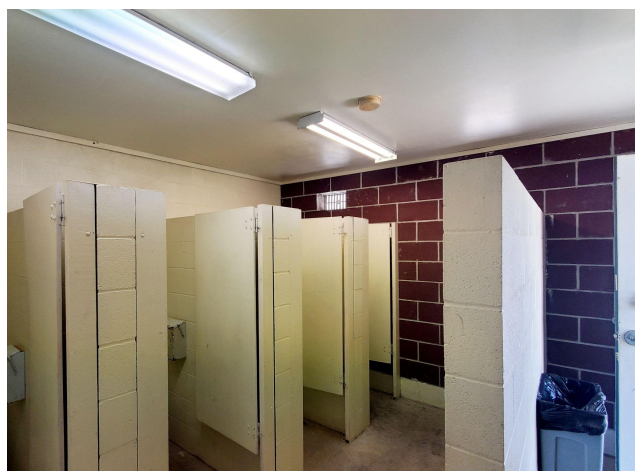


Prioritizing Facility Needs

- Review of all information & additional input
- Site visits around campus facilities







Prioritizing Facility Needs

- Coordinated with SM Wilson to secure high-level estimates
- Identified Potential Improvements
 - How critical the facility need
 - Which projects must logically precede others



Facility Needs & Prioritized Facility Needs

Project	Weighted Average
Building a new middle school wing	13.17
Relocate the athletic track	11.78
Increase parking capacity on campus	11.17
Relocate baseball and/or softball field	10.83
Upgrade stadium to improve accessibility	10.06
Expand/improve Ag Education facilities	8.72
Improve/replace fine arts facilities	8.28
Install turf at football field	8.11
Install turf at baseball/softball fields	7.89

Figure 3: Facilities work group priority rankings of major construction project needs.



Facility Needs & Prioritized Facility Needs


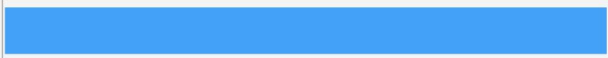
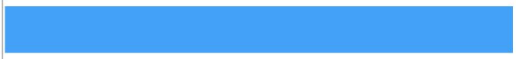
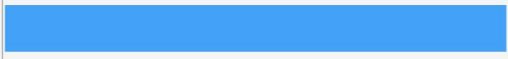
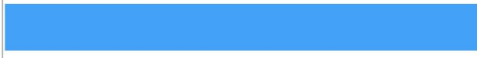
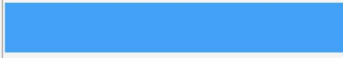

		Weighted
Project		Average
Replace Intermediate boiler/chiller system		5.39
Finalize keyless entry installation		5.06
Improve/replace building at baseball/softball		4.28
Install second set of security doors IS/MS/HS		4.22
Repair asphalt in parking lots		4.00
Upgrade safety and security fencing		2.89
Install asphalt drive around primary school		2.17

Figure 4: Facilities work group priority rankings of additional facilities projects.



Phased Implementation

- Based on the district's assessed value and the resultant 15% debt limit, replacement of the middle school will need to be completed in phases.
- Relocation of the athletic track to the stadium complex must precede relocation of any other facility to the current athletic track location
- Relocation of the baseball field must precede expansion of parking at the secondary school

