

Reopening Schools 2020-2021

Update to the WCPSS Board of Education

July 29, 2020

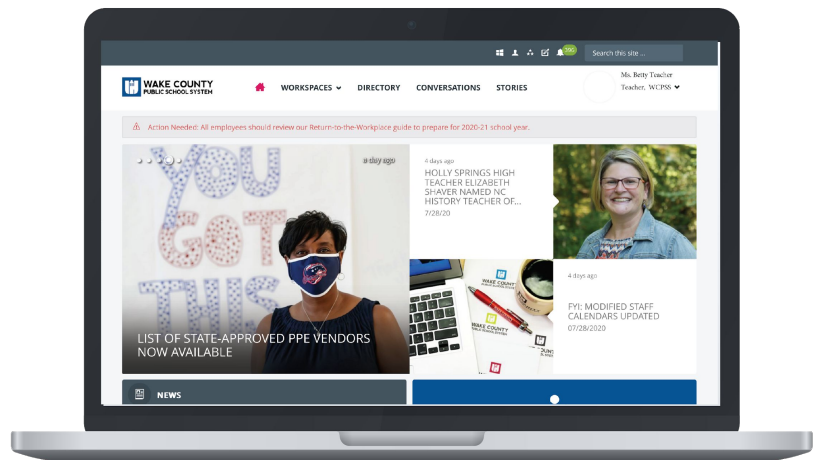
Preparation for the upcoming school year

PREPARATION FOR REOPENING > PREPARING FOR OUR STUDENTS > FIRST TWO WEEKS OF SCHOOL

PREPARATION FOR REOPENING

➔ Employee Communication

- PPE Procurement
- Hand Sanitizer Procurement
- COVID-19 Signage
- Classroom Social Distancing
- Cleaning/Disinfecting
- Virtual Academy
- SEL for Employees
- Professional Learning/PLTs



Preparation for the upcoming school year

PREPARATION FOR REOPENING > PREPARING FOR OUR STUDENTS > FIRST TWO WEEKS OF SCHOOL

PREPARATION FOR REOPENING

PPE Procurement



Preparation for the upcoming school year

PREPARATION FOR REOPENING > PREPARING FOR OUR STUDENTS > FIRST TWO WEEKS OF SCHOOL

PREPARATION FOR REOPENING

- Employee Communication
- PPE Procurement
- Hand Sanitizer Procurement**
- COVID-19 Signage
- Classroom Social Distancing
- Cleaning/Disinfecting
- Virtual Academy
- SEL for Employees
- Professional Learning/PLTs



USE HAND SANITIZER THE RIGHT WAY.

Washing hands with soap and water is the best way to slow the spread of germs in most situations. If soap and water are not readily available, you can use an alcohol-based hand sanitizer that contains at least 60% alcohol.



Apply sanitizer to the palm of your hand (check the product label to learn the correct amount).



Rub your hands together vigorously.



Rub sanitizer over all the surfaces of your hands and fingers until your hands are dry. This should take around 20 seconds.

WAKE COUNTY PUBLIC SCHOOL SYSTEM

Preparation for the upcoming school year

PREPARATION FOR REOPENING > PREPARING FOR OUR STUDENTS > FIRST TWO WEEKS OF SCHOOL

PREPARATION FOR REOPENING

- Employee Communication
- PPE Procurement
- Hand Sanitizer Procurement
- COVID-19 Signage
- Classroom Social Distancing
- Cleaning/Disinfecting
- Virtual Academy
- SEL for Employees
- Professional Learning/PLTs

Preparation for the upcoming school year

PREPARATION FOR REOPENING > PREPARING FOR OUR STUDENTS > FIRST TWO WEEKS OF SCHOOL

PREPARATION FOR REOPENING

- Employee Communication
- PPE Procurement
- Hand Sanitizer Procurement
- COVID-19 Signage
- Classroom Social Distancing
- Cleaning/Disinfecting
- Virtual Academy
- SEL for Employees
- Professional Learning/PLTs



Preparation for the upcoming school year

PREPARATION FOR REOPENING > PREPARING FOR OUR STUDENTS > FIRST TWO WEEKS OF SCHOOL

PREPARATION FOR REOPENING

- Employee Communication
- PPE Procurement
- Hand Sanitizer Procurement
- COVID-19 Signage
- Classroom Social Distancing
- Cleaning/Disinfecting**
- Virtual Academy
- SEL for Employees
- Professional Learning/PLTs



Preparation for the upcoming school year

PREPARATION FOR REOPENING > PREPARING FOR OUR STUDENTS > FIRST TWO WEEKS OF SCHOOL

PREPARATION FOR REOPENING

- Employee Communication
- PPE Procurement
- Hand Sanitizer Procurement
- COVID-19 Signage
- Classroom Social Distancing
- Cleaning/Disinfecting
- Virtual Academy**
- SEL for Employees
- Professional Learning/PLTs

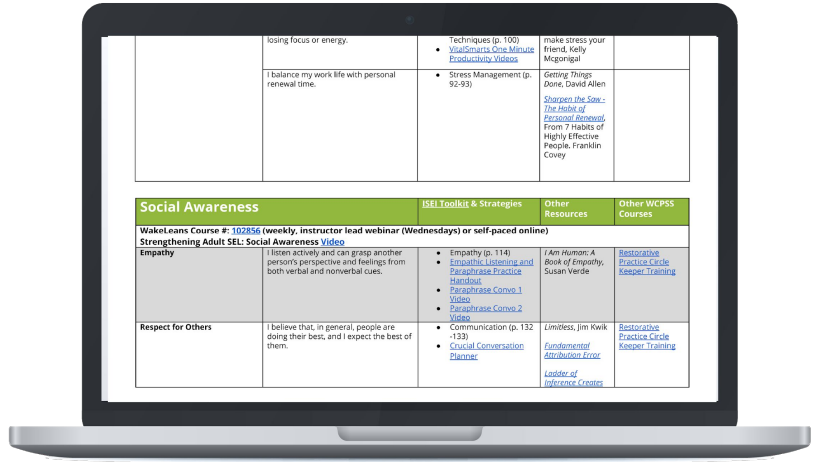


Preparation for the upcoming school year

PREPARATION FOR REOPENING > PREPARING FOR OUR STUDENTS > FIRST TWO WEEKS OF SCHOOL

PREPARATION FOR REOPENING

- Employee Communication
- PPE Procurement
- Hand Sanitizer Procurement
- COVID-19 Signage
- Classroom Social Distancing
- Cleaning/Disinfecting
- Virtual Academy
- SEL for Employees**
- Professional Learning/PLTs



Preparation for the upcoming school year

PREPARATION FOR REOPENING > PREPARING FOR OUR STUDENTS > FIRST TWO WEEKS OF SCHOOL

PREPARATION FOR REOPENING

- Employee Communication
- PPE Procurement
- Hand Sanitizer Procurement
- COVID-19 Signage
- Classroom Social Distancing
- Cleaning/Disinfecting
- Virtual Academy -
- SEL for Employees**
- Professional Learning/PLTs



Preparation for the upcoming school year

PREPARATION FOR REOPENING > PREPARING FOR OUR STUDENTS > FIRST TWO WEEKS OF SCHOOL

PREPARATION FOR REOPENING

- ❑ Employee Communication
- ❑ PPE Procurement
- ❑ Hand Sanitizer Procurement
- ❑ COVID-19 Signage
- ❑ Classroom Social Distancing
- ❑ Cleaning/Disinfecting
- ❑ Virtual Academy -
- ❑ SEL for Employees
- ➔ Professional Learning/PLTs

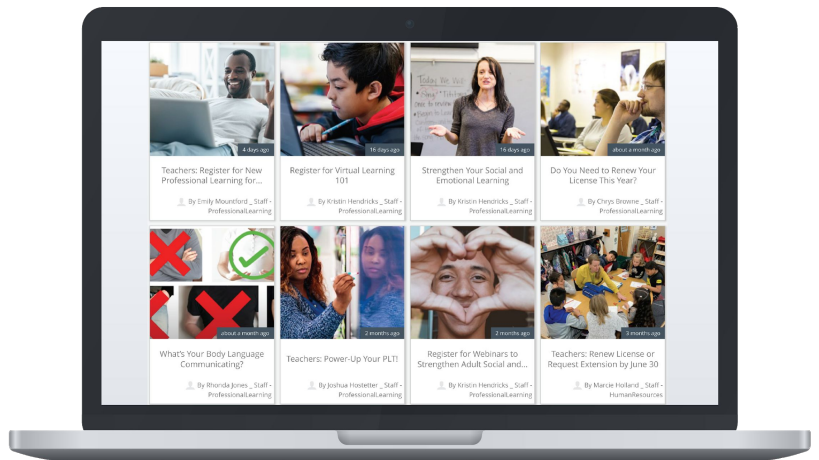


Preparation for the upcoming school year

PREPARATION FOR REOPENING > PREPARING FOR OUR STUDENTS > FIRST TWO WEEKS OF SCHOOL

PREPARING FOR OUR STUDENTS

- ➔ Professional Learning for Online Blended Learning
- ❑ Curriculum Resources
- ❑ Health Guidelines Prof. Learning
- ❑ Health Screening
- ❑ Staffing
- ❑ Staff orientation
- ❑ Childcare



Preparation for the upcoming school year

PREPARATION FOR REOPENING > PREPARING FOR OUR STUDENTS > FIRST TWO WEEKS OF SCHOOL

PREPARING FOR OUR STUDENTS

Professional Learning for Online Blended Learning

- Curriculum Resources
- Health Guidelines Prof. Learning
- Health Screening
- Staffing
- Staff orientation
- Childcare



PROFESSIONAL LEARNING TEAMS



VPLT BEST PRACTICES



SAMPLE VPLT AGENDA



SAMPLE VPLT VIDEO



LESSONS LEARNED FROM DESIGNING AND IMPLEMENTING VPLTs



PLT TOOLKIT



OPL SUPPORT HOURS

- **Book Study cohorts:** *PLC+ Better Decisions and Great Impact by Design*
- Coaching support hours
- PLT 101 self-paced course
- Updated PLT Toolkit
- ~ 8K educators have accessed supports

Preparation for the upcoming school year

PREPARATION FOR REOPENING > PREPARING FOR OUR STUDENTS > FIRST TWO WEEKS OF SCHOOL

PREPARING FOR OUR STUDENTS

Professional Learning for Online Blended Learning

- Curriculum Resources
- Health Guidelines Prof. Learning
- Health Screening
- Staffing
- Staff orientation
- Childcare



1.

Designing a Blended/Online Learning Environment (2 hours)

- **Module 1:** Building Classroom Culture in a Blended and Remote Environment
- **Module 2:** Blended Instruction
- **Module 3:** Choosing and Using an LMS
- **Module 4:** Teaching Students to Use an LMS

2.

Instructional Design in a Blended/Online Environment (2 hours)

- **Module 1:** Equitable Access to Curriculum
- **Module 2:** Instructional Practices
- **Module 3:** Instructional Planning
- **Module 4:** Environment

3.

Communicating with Students & Families in a Blended/Online Environment (1 hour)

- **Module 1:** Increasing Communication
- **Module 2:** Video Conferencing and Screencasting
- **Module 3:** Communicating with Google Classroom* or Communicating with Canvas*

4.

Feedback and Assessment in a Blended/Online Environment (1 hour)

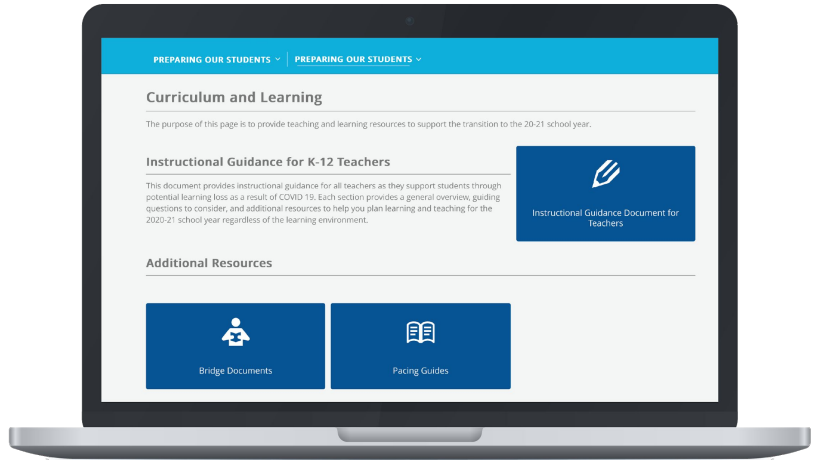
- **Module 1:** Digital Formative and Summative Assessments
- **Module 2:** Providing Effective Feedback
- **Module 3:** Securely Collecting and Analyzing Data
- **Module 4:** Curating Artifacts through Digital Portfolios

Preparation for the upcoming school year

PREPARATION FOR REOPENING > PREPARING FOR OUR STUDENTS > FIRST TWO WEEKS OF SCHOOL

PREPARING FOR OUR STUDENTS

- Professional Learning for Online Blended Learning
- ➔ Curriculum Resources
- Health Guidelines Prof. Learning
- Health Screening
- Staffing
- Staff orientation
- Childcare



Preparation for the upcoming school year

PREPARATION FOR REOPENING > PREPARING FOR OUR STUDENTS > FIRST TWO WEEKS OF SCHOOL

PREPARING FOR OUR STUDENTS

- Professional Learning for Online Blended Learning
- ➔ Curriculum Resources
- Health Guidelines Prof. Learning
- Health Screening
- Staffing
- Staff orientation
- Childcare



WHAT IS "LIVE" INSTRUCTION?



COVID-19 GUIDANCE | Last updated 07/26/2020

Purpose

This document seeks to create a common understanding of "live" instruction in the context of delivering remote instruction as well as instruction within the WCPSS Virtual Academy. It is also to connect school staff with supportive resources for delivering engaging instruction remotely.

Synchronous vs. Asynchronous Instruction

As we discuss instruction, we often use "synchronous" and "asynchronous" to describe instruction. It is important to have a common understanding of these two terms.

- **Asynchronous Instruction:** not occurring at the same time, out of sync learning by completing tasks within a personalized time frame or path (i.e. students watching a video on their own, choice boards)
- **Synchronous Instruction:** occurring at the same time; in sync learning by doing the same thing at the same time (i.e. whole group instruction, students all watching a video together)

	Blended Instruction	Asynchronous	Synchronous
	The strategic integration of synchronous and asynchronous learning in personalized instruction (Roberts 2019; NC DE, What Works SA 1.5)	not occurring at the same time	occurring at the same time
Setting	<ul style="list-style-type: none"> Face to Face: Occurring in the same place Online: Occurring in different places, connected via the internet 	<ul style="list-style-type: none"> Google Classroom/Canvas activity Recorded Lessons Library Centers Choice Boards Independent Practice 	<ul style="list-style-type: none"> Modular/Lessons Mini-lessons Collaborative Group Work Classroomwide Lectures
		<ul style="list-style-type: none"> Google Classroom/Canvas activity Recorded Lessons Library Centers Choice Boards Independent Practice Discussion Questions/forums 	<ul style="list-style-type: none"> Scheduled collaboration using digital tools Using comments in Google Tools for real time feedback Google Meet (live video group or small group) Discussion Questions/forums

Defining "Live" Instruction (Synchronous)



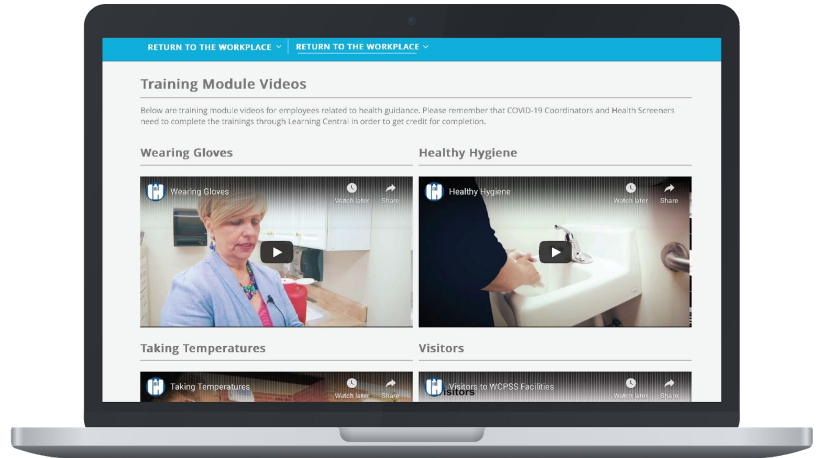
As a district, we have established a baseline for "live" instruction within the student's experience (2-3 hours per day in Virtual Academy and when engaged in Plan B - Transition). In general, instruction is

Preparation for the upcoming school year

PREPARATION FOR REOPENING > PREPARING FOR OUR STUDENTS > FIRST TWO WEEKS OF SCHOOL

PREPARING FOR OUR STUDENTS

- Professional Learning for Online Blended Learning
- Curriculum Resources
- Health Guidelines Prof. Learning**
- Health Screening
- Staffing
- Staff orientation
- Childcare



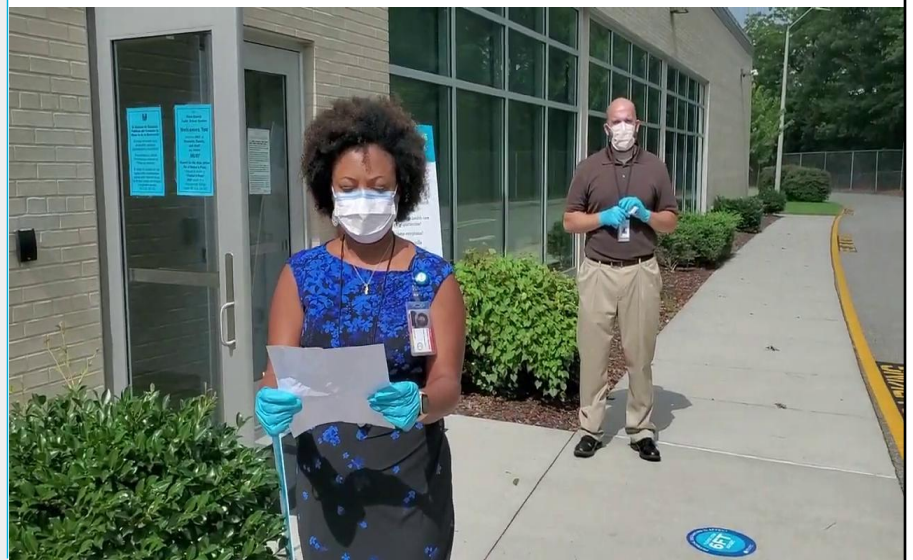
18

Preparation for the upcoming school year

PREPARATION FOR REOPENING > PREPARING FOR OUR STUDENTS > FIRST TWO WEEKS OF SCHOOL

PREPARING FOR OUR STUDENTS

- Professional Learning for Online Blended Learning
- Curriculum Resources
- Health Guidelines Prof. Learning
- Health Screening**
- Staffing
- Staff orientation
- Childcare



Preparation for the upcoming school year

PREPARATION FOR REOPENING > PREPARING FOR OUR STUDENTS > FIRST TWO WEEKS OF SCHOOL

PREPARING FOR OUR STUDENTS

- Professional Learning for Online Blended Learning
- Curriculum Resources
- Health Guidelines Prof. Learning
- Health Screening
- ➔ **Staffing**
- Staff orientation
- Childcare



Phased return to the workplace



Preparation for the upcoming school year

PREPARATION FOR REOPENING > PREPARING FOR OUR STUDENTS > FIRST TWO WEEKS OF SCHOOL

PREPARING FOR OUR STUDENTS

- Professional Learning for Online Blended Learning
- Curriculum Resources
- Health Guidelines Prof. Learning
- Health Screening
- Staffing
- ➔ **Staff orientation**
- Childcare



Preparation for the upcoming school year

PREPARATION FOR REOPENING > PREPARING FOR OUR STUDENTS > FIRST TWO WEEKS OF SCHOOL

PREPARING FOR OUR STUDENTS

- Professional Learning for Online Blended Learning
- Curriculum Resources
- Health Guidelines Prof. Learning
- Health Screening
- Staffing
- Staff orientation

➔ **Childcare**



Preparation for the upcoming school year

PREPARATION FOR REOPENING > PREPARING FOR OUR STUDENTS > FIRST TWO WEEKS OF SCHOOL

FIRST TWO WEEKS OF SCHOOL

➔ Orientation

- PLT planning
- Assessment of student behavioral health
- Instruction
- Attendance/Grades
- Learning management system
- Technology Support
- Device/material distribution
- Core behavioral health support



Preparation for the upcoming school year

PREPARATION FOR REOPENING > PREPARING FOR OUR STUDENTS > FIRST TWO WEEKS OF SCHOOL

FIRST TWO WEEKS OF SCHOOL

➔ Orientation

- PLT planning
- Assessment of student behavioral health
- Instruction
- Attendance/Grades
- Learning management system
- Technology Support
- Device/material distribution
- Core behavioral health support



Preparation for the upcoming school year

PREPARATION FOR REOPENING > PREPARING FOR OUR STUDENTS > FIRST TWO WEEKS OF SCHOOL

FIRST TWO WEEKS OF SCHOOL

➔ Orientation

- PLT planning
- Assessment of student behavioral health
- Instruction
- Attendance/Grades
- Learning management system
- Technology Support
- Device/material distribution
- Core behavioral health support



Preparation for the upcoming school year

PREPARATION FOR REOPENING > PREPARING FOR OUR STUDENTS > FIRST TWO WEEKS OF SCHOOL



Find

- Students and families with whom schools were unable to engage in remote learning last semester
- Resources to support childcare
- Strategies and avenues to build and maintain relationships with families



Connect

- Family and student virtual orientation, open house
- Deploy necessary supplies
- Intentional online sessions for meet-and-greet to introduce students and teachers and begin relationship building



Identify

- Student technology needs
- Student current levels of performance
- Areas for additional instructional and social-emotional support for students and staff

Preparation for the upcoming school year

PREPARATION FOR REOPENING > PREPARING FOR OUR STUDENTS > FIRST TWO WEEKS OF SCHOOL

FIRST TWO WEEKS OF SCHOOL

- Orientation
- PLT planning**
- Assessment of student behavioral health
- Instruction
- Attendance/Grades
- Learning management system
- Technology Support
- Device/material distribution
- Core behavioral health support



Preparation for the upcoming school year

PREPARATION FOR REOPENING > PREPARING FOR OUR STUDENTS > FIRST TWO WEEKS OF SCHOOL

FIRST TWO WEEKS OF SCHOOL

- Orientation
- PLT planning
- Assessment of student behavioral health**
- Instruction
- Attendance/Grades
- Learning management system
- Technology Support
- Device/material distribution
- Core behavioral health support

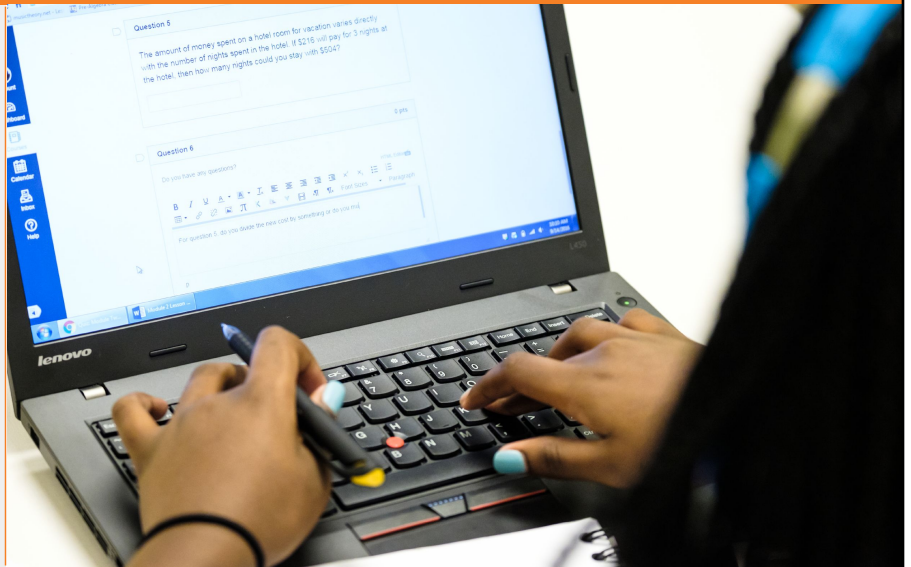


Preparation for the upcoming school year

PREPARATION FOR REOPENING > PREPARING FOR OUR STUDENTS > FIRST TWO WEEKS OF SCHOOL

FIRST TWO WEEKS OF SCHOOL

- Orientation
- PLT planning
- Assessment of student behavioral health
- Instruction**
- Attendance/Grades
- Learning management system
- Technology Support
- Device/material distribution
- Core behavioral health support



Preparation for the upcoming school year

PREPARATION FOR REOPENING > PREPARING FOR OUR STUDENTS > FIRST TWO WEEKS OF SCHOOL

FIRST TWO WEEKS OF SCHOOL

- Orientation
- PLT planning
- Assessment of student behavioral health
- Instruction
- Attendance/Grades**
- Learning management system
- Technology Support
- Device/material distribution
- Core behavioral health support



Preparation for the upcoming school year

PREPARATION FOR REOPENING > PREPARING FOR OUR STUDENTS > FIRST TWO WEEKS OF SCHOOL

FIRST TWO WEEKS OF SCHOOL

- Orientation
- PLT planning
- Assessment of student behavioral health
- Instruction
- Attendance/Grades
- Learning management system**
- Technology Support
- Device/material distribution
- Core behavioral health support

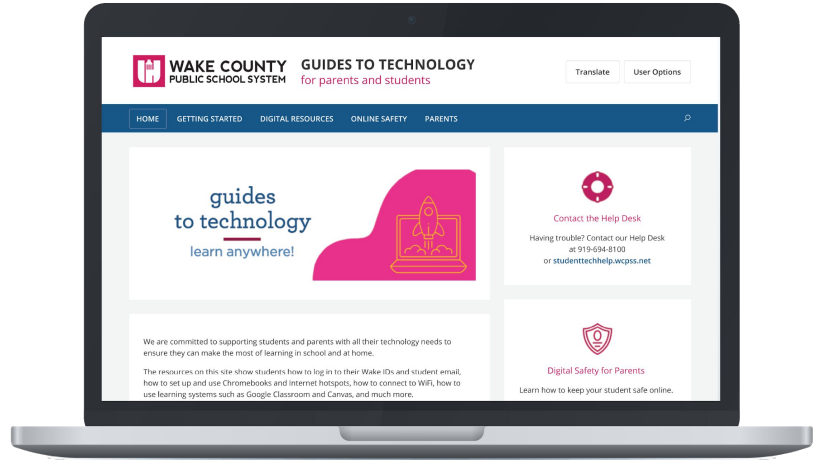


Preparation for the upcoming school year

PREPARATION FOR REOPENING > PREPARING FOR OUR STUDENTS > FIRST TWO WEEKS OF SCHOOL

FIRST TWO WEEKS OF SCHOOL

- Orientation
- PLT planning
- Assessment of student behavioral health
- Instruction
- Attendance/Grades
- Learning management system
- Technology Support**
- Device/material distribution
- Core behavioral health support



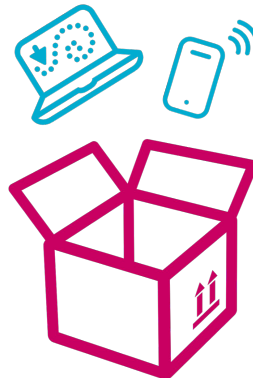
32

Preparation for the upcoming school year

PREPARATION FOR REOPENING > PREPARING FOR OUR STUDENTS > FIRST TWO WEEKS OF SCHOOL

FIRST TWO WEEKS OF SCHOOL

- Orientation
- PLT planning
- Assessment of student behavioral health
- Instruction
- Attendance/Grades
- Learning management system
- Technology Support
- Device/material distribution**
- Core behavioral health support



- ➔ Leesville Road High
- ➔ Knightdale High
- ➔ South Garner High
- ➔ Apex High
- ➔ Enloe High

www.wcpss.net

Preparation for the upcoming school year

PREPARATION FOR REOPENING > PREPARING FOR OUR STUDENTS > FIRST TWO WEEKS OF SCHOOL

FIRST TWO WEEKS OF SCHOOL

- Orientation
- PLT planning
- Assessment of student behavioral health
- Instruction
- Attendance/Grades
- Learning management system
- Technology Support
- Device/material distribution
- Core behavioral health support



Preparation for the upcoming school year

SUMMER PLANNING > TEACHER WORK DAYS > STUDENT ORIENTATION

Questions?

