



The Washington State
BOARD OF EDUCATION

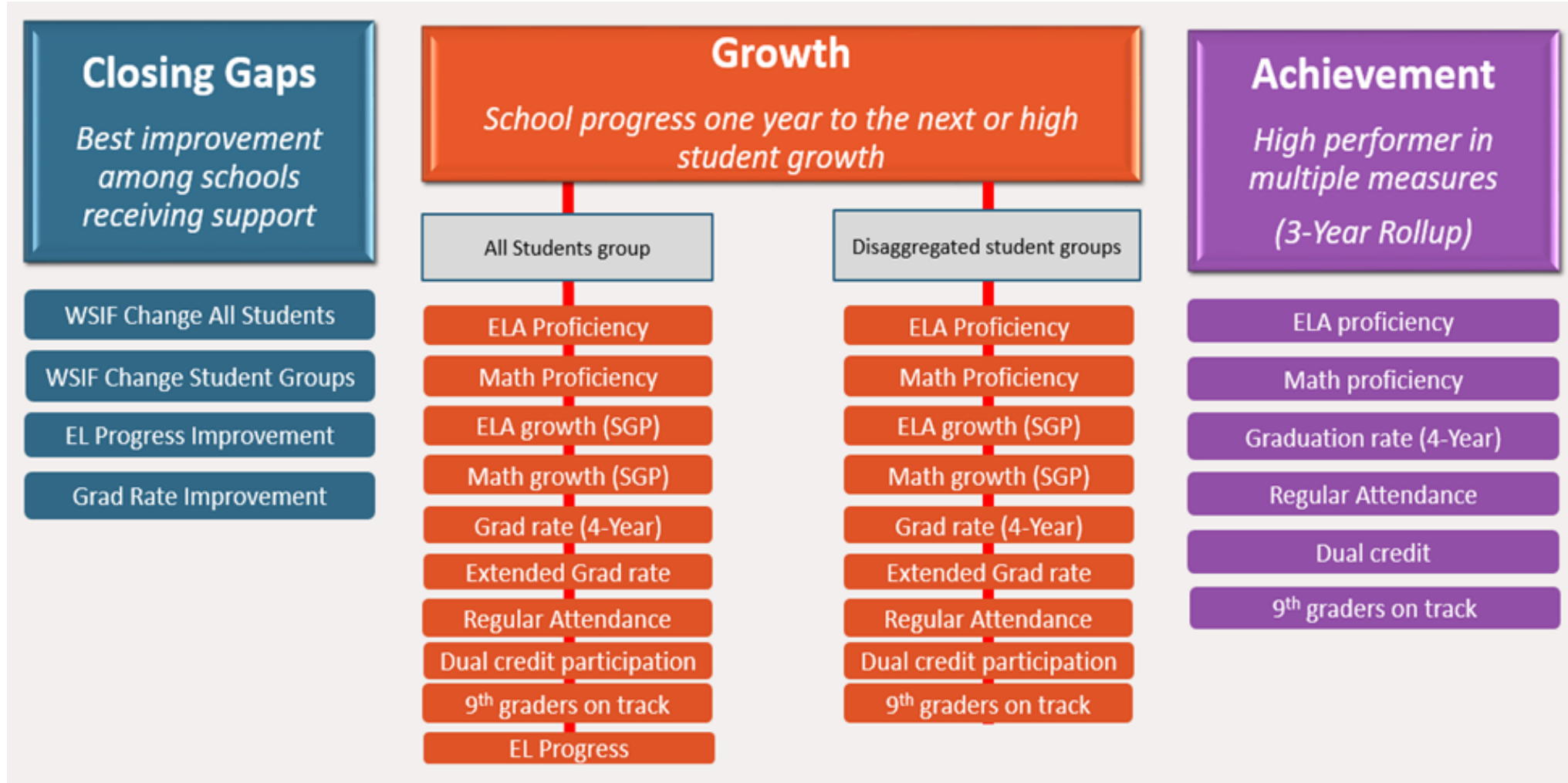
**Update on School Recognition
2021-22 School Year**

February 15, 2024



Methodology Approved for the Most Recent Recognition Cycle

Approximately 400 schools were recognized from the winter 2020 WSIF through one or more of the four routes to recognition.



Changes to the Data Available for the Current Recognition Cycle based on the Winter 2023 WSIF



WSIF and school recognition rely on:

- Assessment results from the 2017 and 2018 school years instead of the 2019-20 and 2020-21 school years.
- Student growth percentiles from the 2017 and 2018 school years instead of the 2019-20 and 2020-21 school years.
- "Adjusted" attendance data from the 2019-20 school year (COVID closures).
- One year of EL Progress results instead of the normal three years of results.

SBE used the available data and applied the approved methodology to assess the viability of school identifications.

ESSA Accountability Term		School Year				
Indicator	Measure	2017-18	2018-19	2019-20	2020-21	2021-22
Academic Achievement	ELA Proficiency	○	○	N/A	N/A	○
	Math Proficiency	○	○	N/A	N/A	○
Other Academic Achievement	Student Growth Percentile & Average Achievement Level	SGP	SGP	N/A	N/A	Average Achievement Level (2022 only)
Graduation Rate	4-Year Adjusted Cohort			○	○	○
School Quality and Student Success (SQSS)	Regular Attendance		○	Adjusted (Sept-Feb)	N/A	○
	Ninth Grade on Track			○	○	○
	Dual Credit			○	○	○
English Learner Progress	EL Progress					ELPA21 (2021) to WIDA (2022)

Table is from <https://www.k12.wa.us/policy-funding/grants-grant-management/every-student-succeeds-act-essa/washington-school-improvement-framework>

School Recognition Updates to the SBE and EOGOAC in 2023



Date	Presentation	Outcome
May	SBE presented to the EOGOAC early results from the first model iteration (version 1.0).	Explore possible scenarios.
June	Staff updated the Board and presented to the EOGOAC results of the first three modified models (versions 1.0, 2.0 & 3.0) for comparison.	Continue exploring possible modifications for version 3.0.
August	Staff presented to the Board and the EOGOAC results from a modified model iteration (version 3.5) addressing potential inequities.	Members requested that more work be undertaken.
September	SBE presented results of two model iterations (versions 3.6 & 3.7) addressing issues articulated by EOGOAC members at an earlier meeting.	Return with results from the version that most closely matches the approved model.
October	Staff presented to the Board and the EOGOAC results of the model (version 3.4) most closely resembling the currently approved recognition model.	Wait for meeting with OSPI partner. EOGOAC quorum not present, no action taken.
November	SBE summarized the 2023 school recognition work and presented several “next step” options to the committee.	Next recognize schools near the end of the 2023-24 school year.



Trial 3.4 – Comparison of School Identifications Most Similar to Approved School Recognition Model

Identifications yielded in Trial 3.4 are similar to the identifications produced in the winter 2020 recognition cycle.

Trial 3.4: follows the approved methodology from the last school recognition cycle.

- **Includes the application of a High/Low Gap filter for the Growth route based on race and ethnicity.**
- **Includes the use of slightly higher decile cut points for the Growth route on the Regular Attendance measure.**

Trial 3.4 remains preliminary, as the results have not undergone the final review. The totals represent an unduplicated count of schools.

Recognition Route	W2020 Final	W2023 Trial 3.4
Closing Gaps	80	73
Closing Gaps and Growth	32	14
Growth	213	201
Growth and Achievement	9	13
Achievement	55	40
<i>Total*</i>	<i>389</i>	<i>341</i>



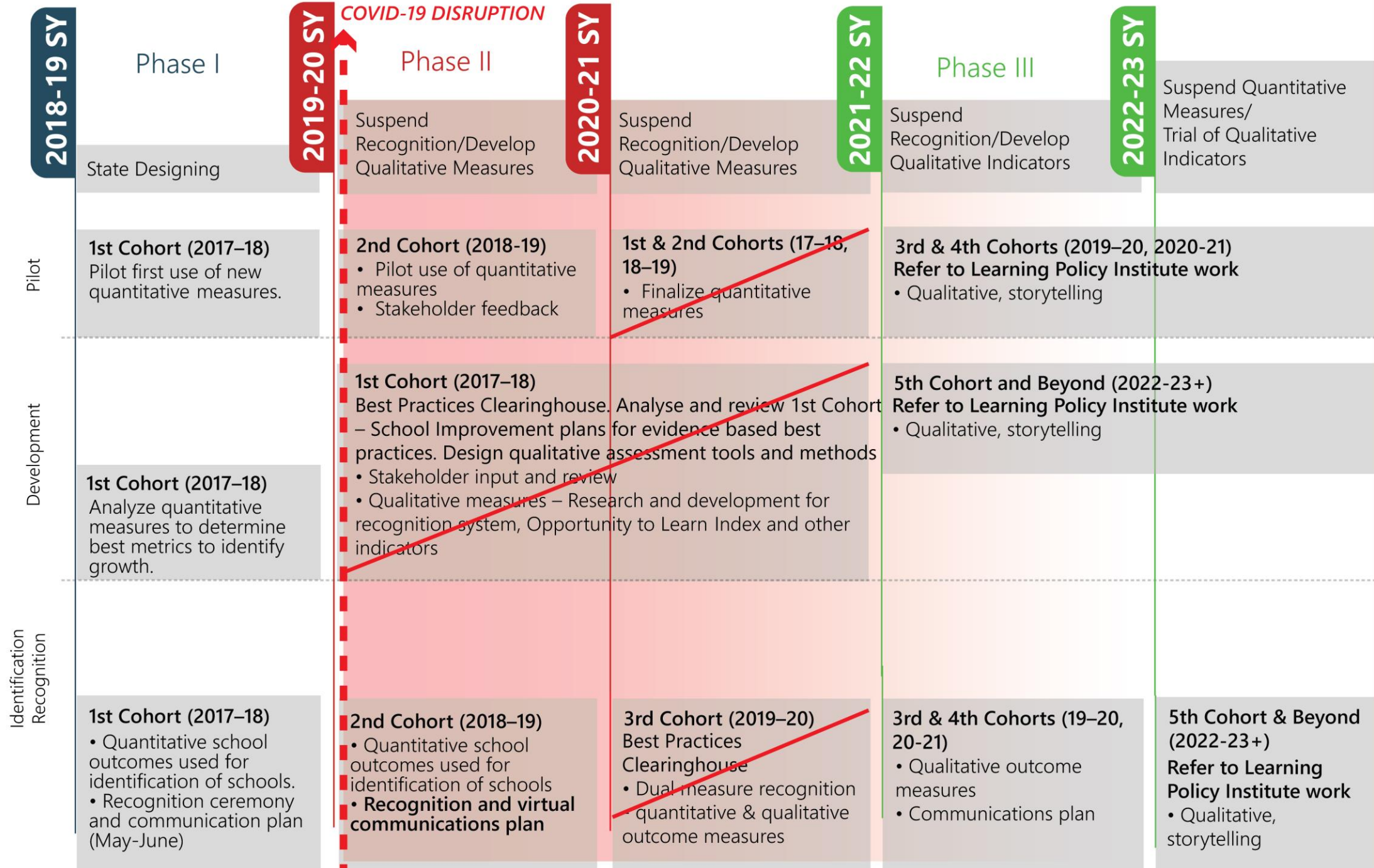
Decile Cut Points for the Growth Route

	ELA PRO	MATH PRO	ELA SGP	MATH SGP	GRAD RATE	EXT GRAD RATE	DUAL CREDIT	ON TRACK	*REG ATTEN
	Top Decile	Top Decile	Top Decile	Top Decile	Top Decile	Top Decile	Top Decile	Top Decile	Top Decile
All Students	0.81	0.28	NA	NA	10.00	27.46	14.49	17.37	0.00
Native American	11.40	4.77	NA	NA	14.93	52.50	22.18	35.88	0.00
Asian	8.38	7.14	NA	NA	7.04	25.00	15.03	19.84	2.72
Black	13.11	11.46	NA	NA	13.50	34.40	21.86	22.64	0.00
Hispanic	5.24	5.34	NA	NA	11.98	25.61	17.89	33.38	0.00
White	2.61	2.56	NA	NA	9.95	24.49	13.46	16.99	0.00
Pacific Islander	12.23	6.63	NA	NA	14.26	31.37	22.99	24.92	6.28
Two or More Races	10.00	11.25	NA	NA	12.66	28.05	18.94	19.17	0.00

***Note: Regular Attendance decile cut points shown as 0.00 were adjusted up from a negative value to 0.0001 but are rounded up here to the nearest hundredth place (0.00 percentage points).**

Recognition Program Timeline

Revised Plan



Full System in Place

2023-24 SY



Moving Forward

- **Postpone the 2021-22 recognition to hold in conjunction with the 2022-23 recognition near the end of the 2023-24 school year or near the start of the 2024-25 school year.**
- **Reestablish the School Recognition Work Group**
 - **Modifying the school recognition measures to include locally-derived and or qualitative information**
 - **Approximately four to six meetings through the December 2024**
 - **Workgroup composition: 2-3 Board members, 2-3 EOGOAC members, and staff from SBE and OSPI.**

Contact Information

Website: www.SBE.wa.gov

Facebook: www.facebook.com/washingtonSBE

Twitter: [@wa_SBE](https://twitter.com/wa_SBE)

Email: sbe@k12.wa.us

Phone: 360-725-6025

Web updates: bit.ly/SBEupdates

