



Information Item

Update to the WCPSS Board of Education

September 15, 2020



ABC Science Collaborative

Danny Benjamin, MD, PhD

Kiser-Arena Distinguished Professor of Pediatrics, Duke University

Co-Chair ABC Scientific Collaborative

Guests

Theresa Kallman, MD, FAAP, Cornerstone Pediatrics, Cary NC

Theresa M. Flynn, M.D., Primary Care Pediatrician

Presentation to NC School Districts

September 2020



THE ABC SCIENCE
COLLABORATIVE

Learning | Informed Decision-Making | Research

The information presented here is the most up-to-date, data-driven and evidence-based science to help school districts make important decisions regarding face-to-face instruction. Duke University and its partners will not make decisions nor will they advise specific action.

Updates

- Updates: partnership with Duke, UNC, 50 school districts
- Leadership Focus - Superintendents
 - Expertise to look at national, state, and local epidemiology; insight into current research (therapies, vaccines, face coverings, outdoor instruction, transmission in HS vs elementary students, etc.)
- School Staff and Family Focus
 - Provide the data in a format that is clear and direct, with best practices that can be implemented in a return to face-to-face educational learning environment.
 - Format: webinars (weekly initially), newsletter content and a public facing website
 - First of these occurred; videos to website this month



1. COVID-19 in an Overnight Camp, Georgia

- Beginning: June 17 – 20
 - Orientation for 138 trainees & 120 staff members (median age 17; range 14 – 59 years)
 - Limited cloth mask compliance
 - Negative test ≤ 12 days before arriving
- Later: June 21 – 27
 - 363 campers joined (age 6-19 years)
 - Indoor, outdoor, vigorous singing and cheering
 - No mask for kids
 - June 23: Teenage staff member has symptoms and positive

COVID-19 in an Overnight Camp, Georgia

Characteristic	Number	No. positive	Attack rate %
Total	597	260	44
Sex			
Male	267	123	46
Female	330	137	42
Age			
6-10	100	51	51
11-17	409	180	44
18-21	81	27	33
22-59	7	2	29
Attendees			
Trainee	134	26	19
Staff	117	66	56
Camper	346	168	49
Cabin size			
Small (<4)	13	5	38
Medium	75	29	39
Large (>13)	375	200	53

COVID-19 in an Overnight Camp, Georgia

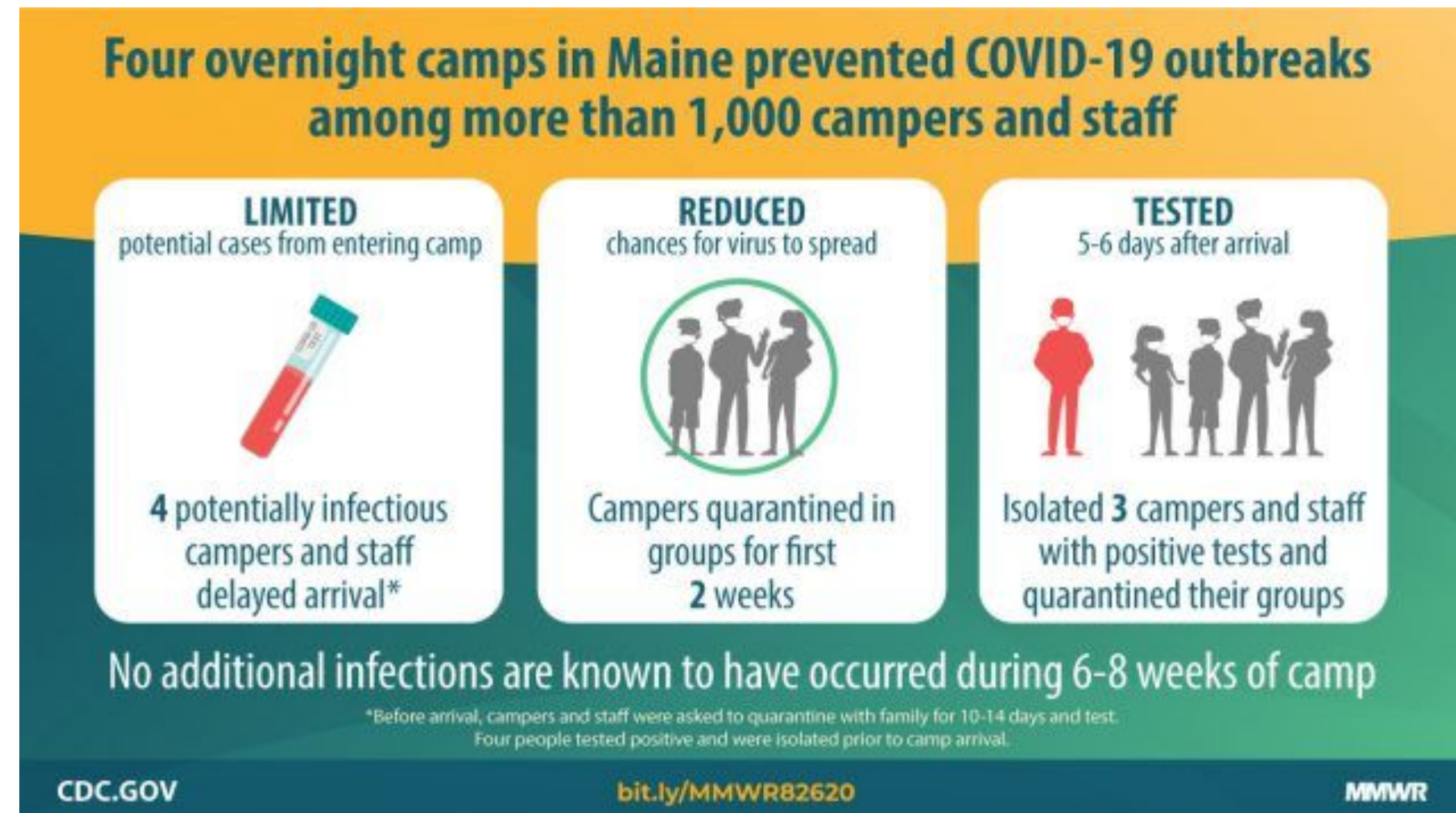
- Key points
 - Masks are important. Kids should wear masks
 - Most transmission occurred from staff → campers
 - Negative test ≤12 days should not give reassurance
 - Increased time at camp increased risk of infection

Managed well

- MMWR about safe overnight camps in Maine:
https://www.cdc.gov/mmwr/volumes/69/wr/mm6935e1.htm?s_cid=mm6935e1_w
- Contrasts
 - Tested at the start
 - Masks
 - Cohorts
 - Distancing
 - No additional infections

Summary

Four Maine overnight camps with 1,022 attendees from 41 states implemented a multilayered prevention strategy that was successful in identifying and isolating asymptomatic COVID-19 cases and preventing secondary transmission.

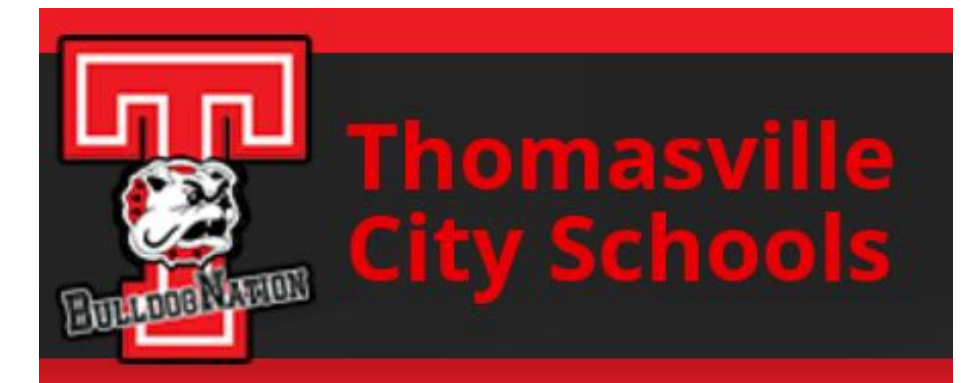
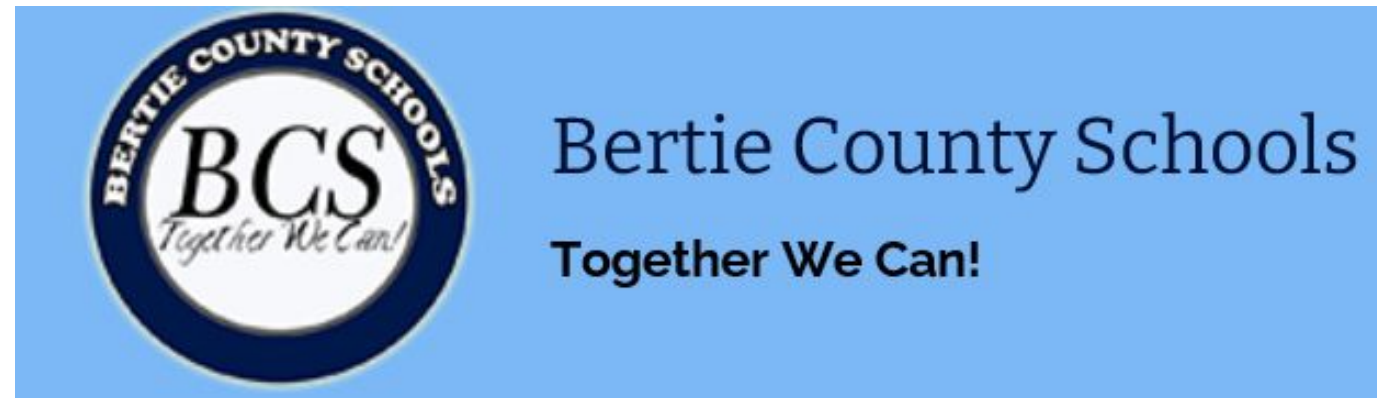


Metrics vs Plan and Risk/Benefit

- After school care experience
- Camp experiences locally, southeastern, and northeastern
- Child care experience NYC; Utah
- University experience
 - Davidson, Duke, Norwich University, and others
 - Alabama and UIUC
- Yadkin County Schools, Iredell-Statesville Schools

- Key elements: masking, population density, hand hygiene
- Metrics as a small part of the decision
- Risk/Benefit rather than no-risk

Districts with MOUs



Thank you.



THE ABC SCIENCE
COLLABORATIVE

Learning | Informed Decision-Making | Research



Scheduling Options to Support Instruction

Drew Cook, Assistant Superintendent, Academics

Scheduling Options to Support Instruction

Balancing Consistency with Responsiveness

During this school year, there will be a consistent effort to seek balance between:

Consistency & Predictability

for staff, students, and families that creates a framework for accomplishing our goals



Responsiveness

to current information to guide next steps & opportunities for students

July 2, 2020



Scheduling Options to Support Instruction

First Month: Initial Feedback & Observations

- Teachers & parents adapting their traditional work to support learning
- While the components of effective instruction remain the same, the time it takes to implement effective instruction has increased
- Student experiences are unique and vary from school-to-school and within an individual classroom
- Teachers and students expressing concerns about increased screen time and the balance between synchronous and asynchronous learning and teaching



Scheduling Options to Support Instruction

Potential Strategies/Adjustments Being Considered

- Increased flexibility to allow for school-level adjustments based on need, experience, and observations
- Tighter limits on the daily cumulative total of live and asynchronous instructional time for students, particularly in early elementary grades
- Increased minimum baseline for teacher and PLT planning time
- Integration of a weekly, district-wide asynchronous learning day to provide additional opportunities for individual student supports and interventions, social-emotional needs assessments and wellness-checks, and teacher planning



Scheduling Options to Support Instruction

Process/Next Steps

- Area Superintendents reviewing and analyzing individual school schedules to identify regional and district-wide trends and/or outliers
- Seeking feedback from stakeholders including principals, teachers, students, and parents
- Working to align this effort with our plans for returning to the school building to ensure that constant change does not become our norm
- Assessing the instructional impact of the options

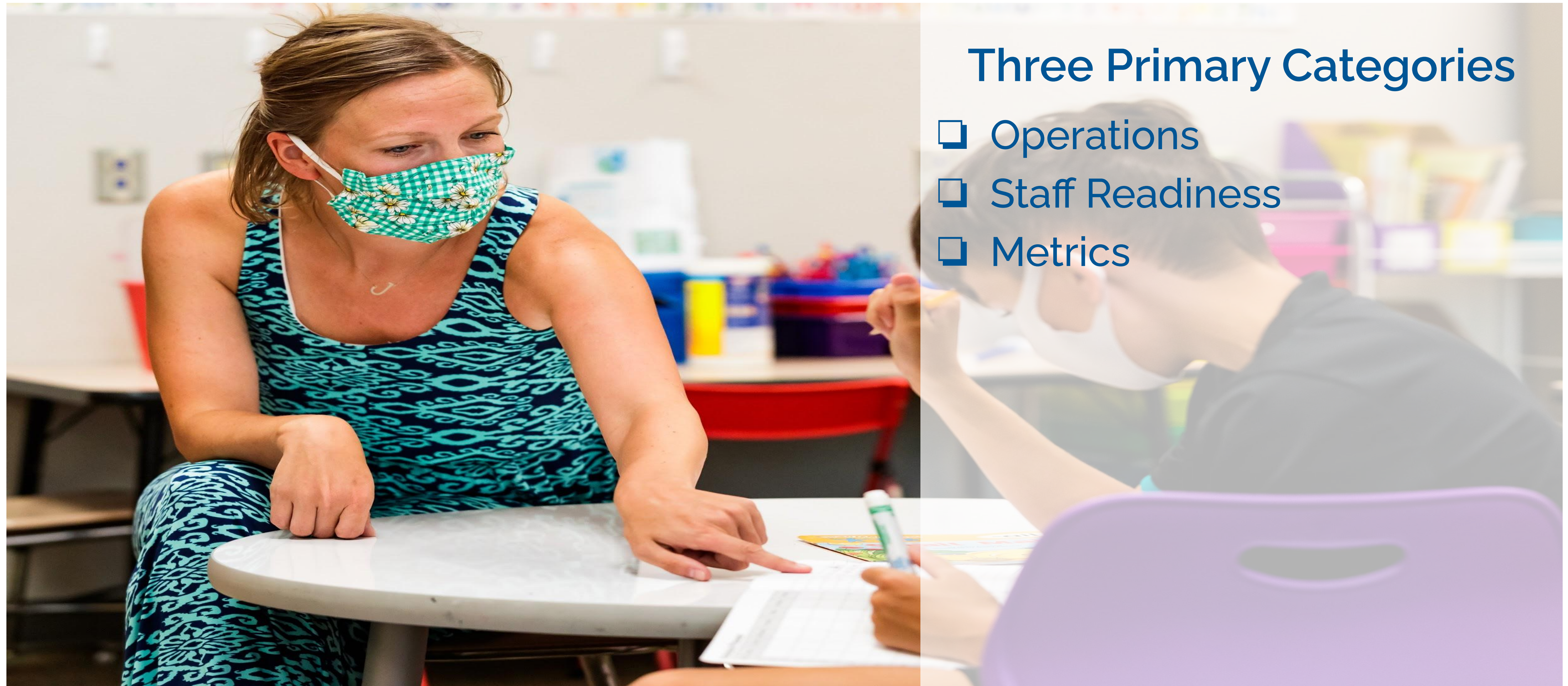


Returning to In-person Instruction

Cathy Moore, Superintendent



Dependencies



Three Primary Categories

- ❑ Operations
- ❑ Staff Readiness
- ❑ Metrics

Operations

PPE and Supplies

Health Guidance and Support Processes

Transportation

Child Supervision

- Required and recommended PPE has been distributed to school sites.
- Custodial cleaning supplies for building distributed to school sites.
- Classroom cleaning supplies en route.

Spaces, students, staff

- ❑ cloth reusable face coverings (5 per student and staff)
- ❑ hand sanitizer with at least 60% alcohol (wall mounts)
- ❑ hand soap
- ❑ paper towels
- ❑ touchless thermometers
- ❑ signage to support Health Guidance
- ❑ gloves (when using cleaning products)
- ❑ splash protection face shields (provided upon individual request and specialized roles)
- ❑ gowns (provided upon individual request and specialized roles)



Operations

PPE and Supplies

Health Guidance and Support Processes

Transportation

Child Supervision

- Health Guidance and processes established to set expectations and inform procedures
- Training videos created
- Staff practice of screening protocols
- Board policies revised for current state

Guidance Documents and Resources

- Social Distancing
- Face Coverings
- Protecting Vulnerable Populations
- Cleaning and Disinfecting
- Monitoring for Symptoms
- Handling of suspected, presumptive, or confirmed positive cases of COVID-19



Operations

PPE and Supplies

Health Guidance and Support Processes

Transportation

Child Supervision

→ Two additional dependencies that are of special note.

Transportation

- Cohort route creation
- Practicing routes
- Cleaning procedures
- Attestation procedures
- Social distancing
- Plan B ridership survey

Child Supervision

- Community programs will undergo changes
- District FAST program to be reviewed

Staffing

Readiness for In-Person Learning and Teaching

- Many teachers and staff have returned to buildings.
- Reviewing accommodations for staff.
- Gathering additional feedback for decision making.
- Preparing for students' return to buildings.

Staff Readiness

- ❑ A large majority of schools have more than half of staff on campus
- ❑ Monitor staffing needs to support return to in-person instruction
- ❑ Confirm that instructional spaces are prepared to meet standards for:
 - ❑ socially distanced furnishings
 - ❑ completed screening protocols prior to students' return
 - ❑ separate supplies and resources for each student
- ❑ Professional development and training
 - ❑ **4 courses** required for all instructionally focused staff at schools and CS
 - ❑ **Training videos and guidance** posted on WakeConnect for all staff
 - ❑ **ABD Scientific Collaborative webinars** available for all staff

Metrics

Community Health

When determining whether it is safe to return to school, the district will rely heavily on the following health guidance.

DHHS

- ❑ [Positivity rate](#)
- ❑ [Supporting metrics](#)

Suggested Metrics:

WCPSS is considering a return to in-person instruction, if the positivity rate average is 5% or less for two consecutive weeks, and supporting metrics are all trending in the downward direction.

CDC

School officials should make decisions about school reopening based on available data including levels of community transmission and their capacity to implement appropriate mitigation measures in schools to protect students, teachers, administrators, and other staff.

<https://www.cdc.gov/coronavirus/2019-ncov/community/schools-childcare/schools.html>

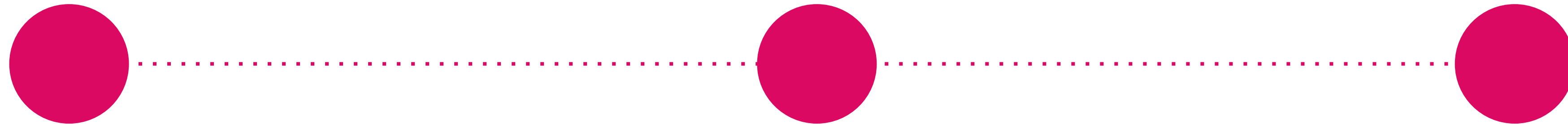
ABC Science Collaborative

As WCPSS reviews DHHS metrics for the community, strict adherence to the 3W's is the top priority.

- ❑ Wear a mask
- ❑ Wait at least six feet apart
- ❑ Wash hands frequently

Return to In-Person Scenarios Under Consideration

Scheduling



Three Week Rotation

- 1 week: in-person learning
- 2 weeks: remote learning

Two Week Rotation

- 1 week: in-person learning
- 1 week: remote learning

No Rotation

- students not enrolled in WCPSS Virtual Academy attend in-person every day

It is important to note that the WCPSS Virtual Academy will continue to operate through the 2020-2021 school year regardless of scenario selected.

Return to In-Person Scenarios Under Consideration

Possible Grade Level Configurations

In-person:
PreK-5
Regional Programs

Remote Only:
Grades 6-12

In-person:
PreK-2
Regional Programs
Grade 6
Grade 9

Remote Only:
Grades 3-5
Grades 7-8
Grades 10-12

In-person:
PreK-2
Regional Programs

Remote Only:
Grades 3-12

In-person:
PreK-12

Remote Only:
none

It is important to note that the WCPSS Virtual Academy will continue to operate through the 2020-2021 school year regardless of scenario selected.

Returning to In-Person Instruction

Three Primary Categories of Dependencies

- ✓ Operations
- ✓ Staff Readiness
- ✓ Metrics



Return to School

- ✓ **Metrics:** positivity rate and supporting metrics
- ✓ **Rotation:** 3 weeks, 2 weeks, every day
- ✓ **Grade Configuration:** TBD
- ✓ **Specific Date:** As soon as the beginning of 2nd quarter



Questions?