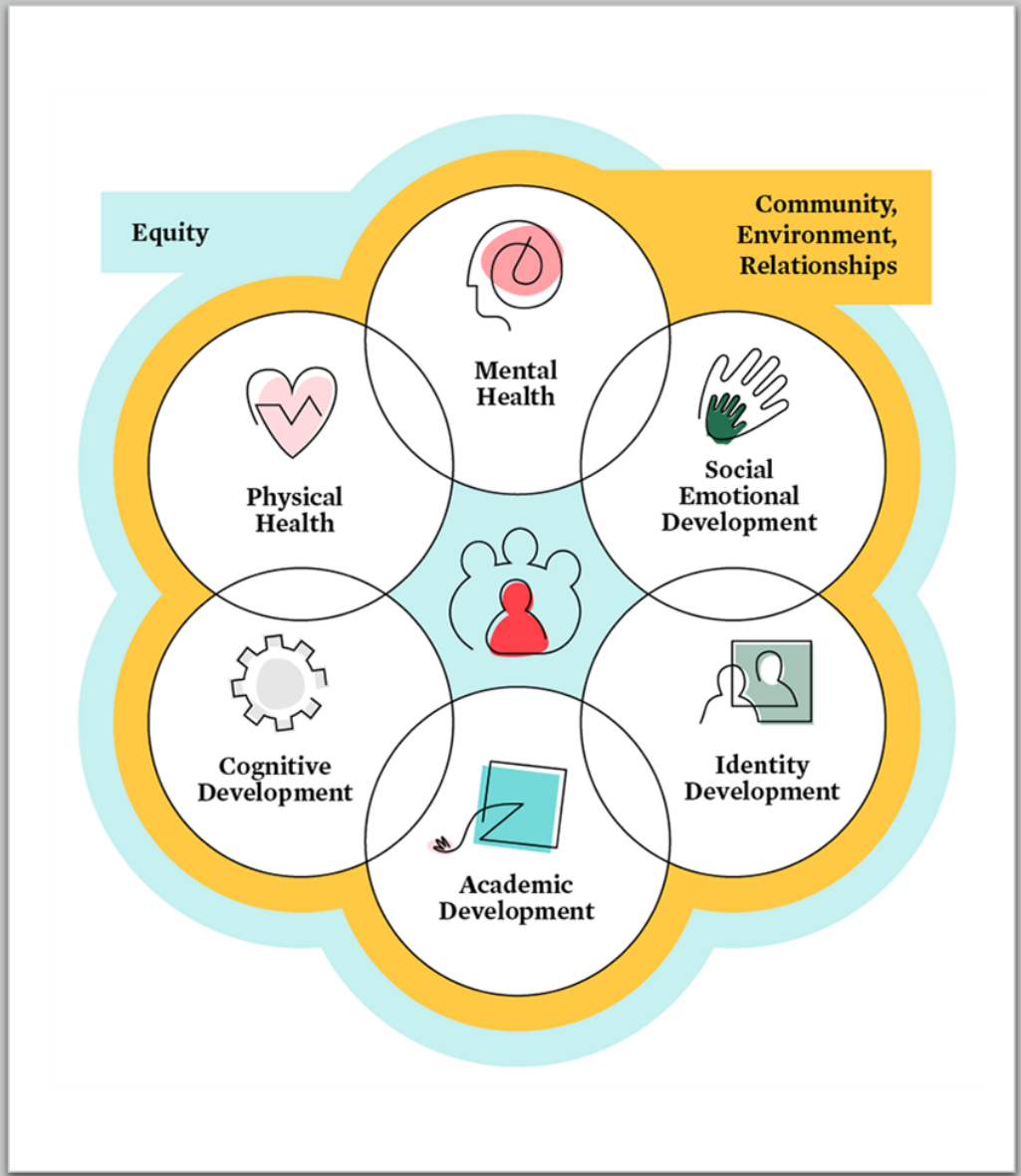




California Community Schools Partnership Program (CCSPP)


Planning Grant Overview

April 2022





California's Community Schools investment.

- 3.84 billion as part of COVID recovery
 - Planning grants – Only for districts new to Community Schools
 - \$200,000 for up to two years
 - Implementation grants
 - Up to \$500,000 per school, per year, for five years
 - Regional Technical Assistance Centers (5)
 - No silos - Integrate with other key state and district initiatives
 - Based on 60 yrs. of evidence
- 

WHAT ARE COMMUNITY SCHOOLS?

All kids deserve schools with expanded curriculum, wraparound supports, and community involvement

KEY STRATEGIES

Well-Prepared and Effective Teachers

who can support diverse learners.

Wraparound Academic, Social/Emotional & Health Supports

to help students stay on track.

Positive Discipline Policies

that keep students in school, safe, and learning.

Engaged Parents & Communities

that are invested in the school's success and foster partnerships between the school, local businesses, and non-profits.

Universal Access to Pre-K

so that every child is ready to learn when they enter school and no one starts behind.

Equitable School Funding

so schools in low-income communities can be equipped with resources & supports.

Expanded Learning Time

including after-school programs, internships, and community service.

Four Pillars of Community Schools

Key Requirements:

- Year-round system of care
- Schools as hubs of community support
- Strengths-based
- Mutually-beneficial partnerships
- Sustainable over time
- Decisions based on data

1 Individualized, integrated student supports

Wraparound services may include physical or behavioral health care or mentoring programs

2 Expanded, enriched learning times

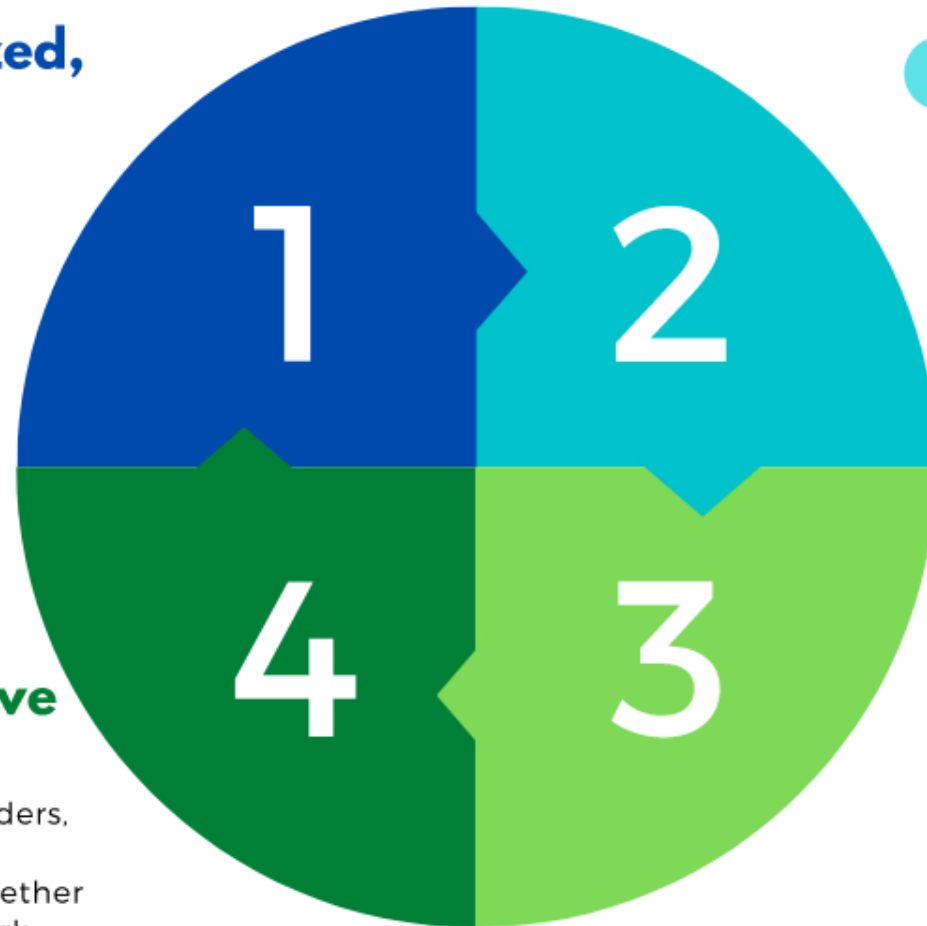
These opportunities may include programs like afterschool dance classes or summer literacy programs

4 Collaborative leadership

Parents, school leaders, and community members work together in a trusting network

3 Neighborhood hub for parents and community

Schools will provide services such as English classes, job training, and computer courses



FCUSD
schools that
qualify for
CCSPP
funding.

	Enrollment (2018-2019)	Unduplicated Count (2018-2019)	Suspension Rate (2018-2019)
State			3.6%
District	20,600	38%	4.2%
Cordova Gardens Elementary	343	82%	7.1%
Cordova High School	1,855	69%	9.8%
Cordova Meadows Elem.	383	95%	3.8%
Cordova Villa Elementary	466	91%	14.3%
Kinney High School	119	82%	17%
Mills Middle	769	84%	14.2%
P.J. Shields Elementary	201	83%	1.9%
Prospect CDS	44	86%	67.9%
Rancho Cordova Elementary	442	84%	2.4%
White Rock Elementary	455	94%	4.2%
W.E. Mitchell Middle School	872	65%	11.8%
Williamson Elementary	536	85%	1.8%



Planning Grant Actions:

June 2022 to
July 2023

1. Hire a full time Community Schools Coordinator
2. Develop a regional Community Schools Plan
 - Analyze all available school/regional data
 - Conduct a community asset map and gap analysis
 - Involve community partners in needs assessment
 - Plan for implementation and sustainability
1. Increase family participation in annual income verification process
1. Use whole-child focus to integrate supports
2. Professional development for school teams and community partners in Community Schools model
3. Expand community partnerships
1. Write implementation grants in Spring 2023

Success looks like:

- Birth to graduation system of care
- Improved academic performance for each LCAP student group
- Improved daily attendance
- Decreased school transiency - students and staff
- Restorative approach to behavior
- Integrated student support system
- Improved relationships with families
- Staff have resources for students in need
- Increased graduation rates



Mindset,
not money.







Questions?