



# GUIDING OUR WAY FORWARD





# **LEANDRO 2021**

# **Alignment to Action**



# Leandro Priorities

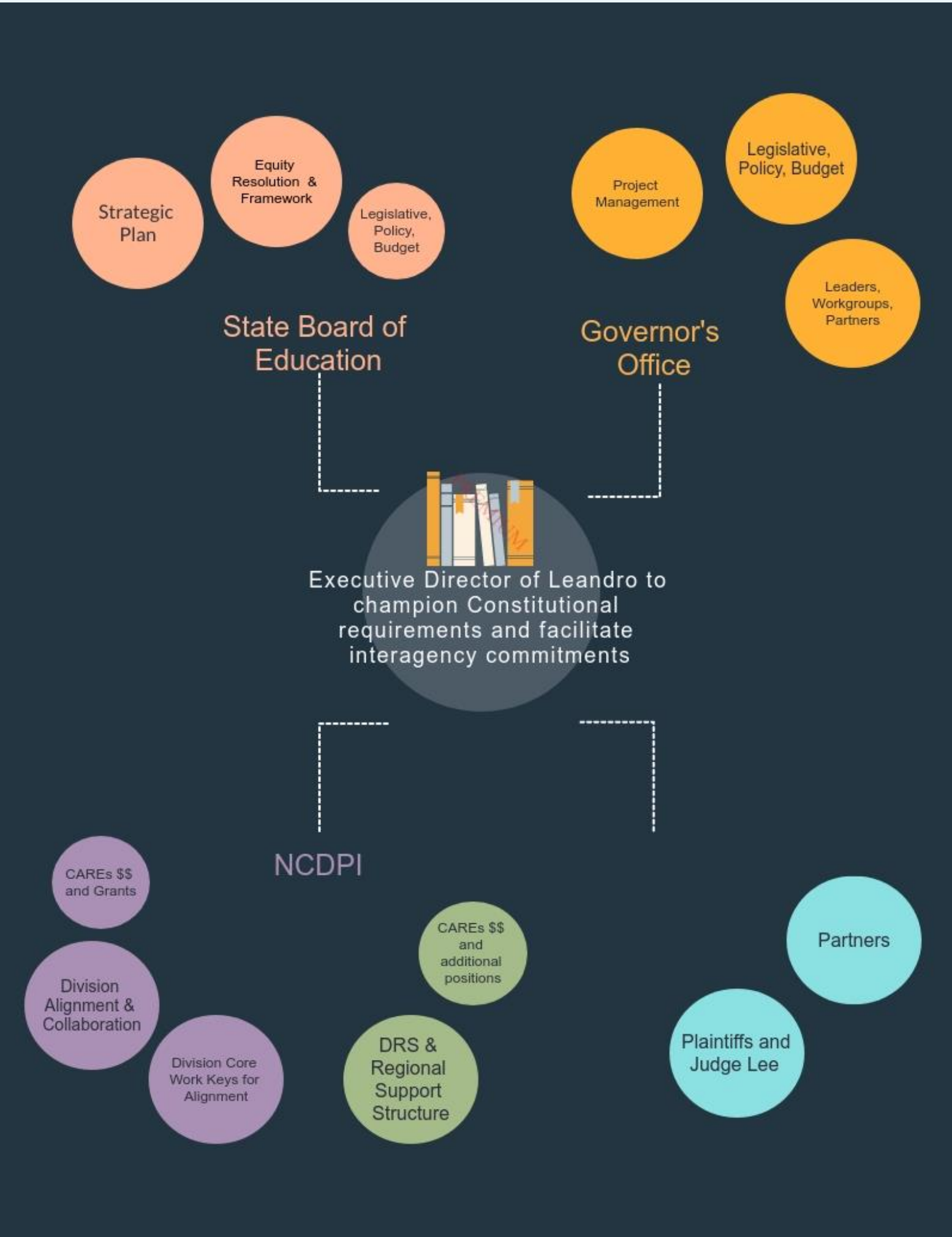
1. Teacher Development and Recruitment that ensures a high quality teacher in every classroom who is supported with professional learning and provided competitive pay.
2. Principal Development and Recruitment that ensures each school is led by a high-quality principal who is supported with professional learning and provided competitive pay.
3. Adequate, equitable and predictable funding system.
4. Assessment and accountability system that reliably assesses multiple measures of performance against the Leandro standard and provides accountability consistent with the Leandro standard.



# Leandro Priorities - Continued

5. Assistance and Turnaround providing support to low-performing schools and districts.
6. A system of early education that provides access to high-quality PreK for ALL students so that they enter kindergarten on track for success.
7. Alignment of high school to postsecondary and career expectations as well as the provision of early postsecondary and workforce learning opportunities.





# Plan Workgroups

## Teachers and Principals- *Governor's Office Lead*

DPI Content Experts- C. Martin, A. Mullennix, R. Sox

## Finance- *OSBM Lead*

DPI Content Experts- TBD

## Assessment and Accountability- *DPI Lead*

DPI Leads and Content Experts- D. Stegall, T. Howard, T. Tomberlin



# Plan Workgroups, Continued

## **Assistance and Turnaround- *DPI Lead***

DPI Leads and Content Experts- B. Emory, C. Martin, A. Montanari, J. Gibbs

## **Early Education- *DHHS/Governor's Office Lead***

DPI Content Experts- A. Rhyne, T. Parish, K. Bendheim

## **Post Secondary Alignment- *Governor's Office Lead***

DPI Content Experts- S. Coltrane, T. Michael, M. Hemphill-Joseph



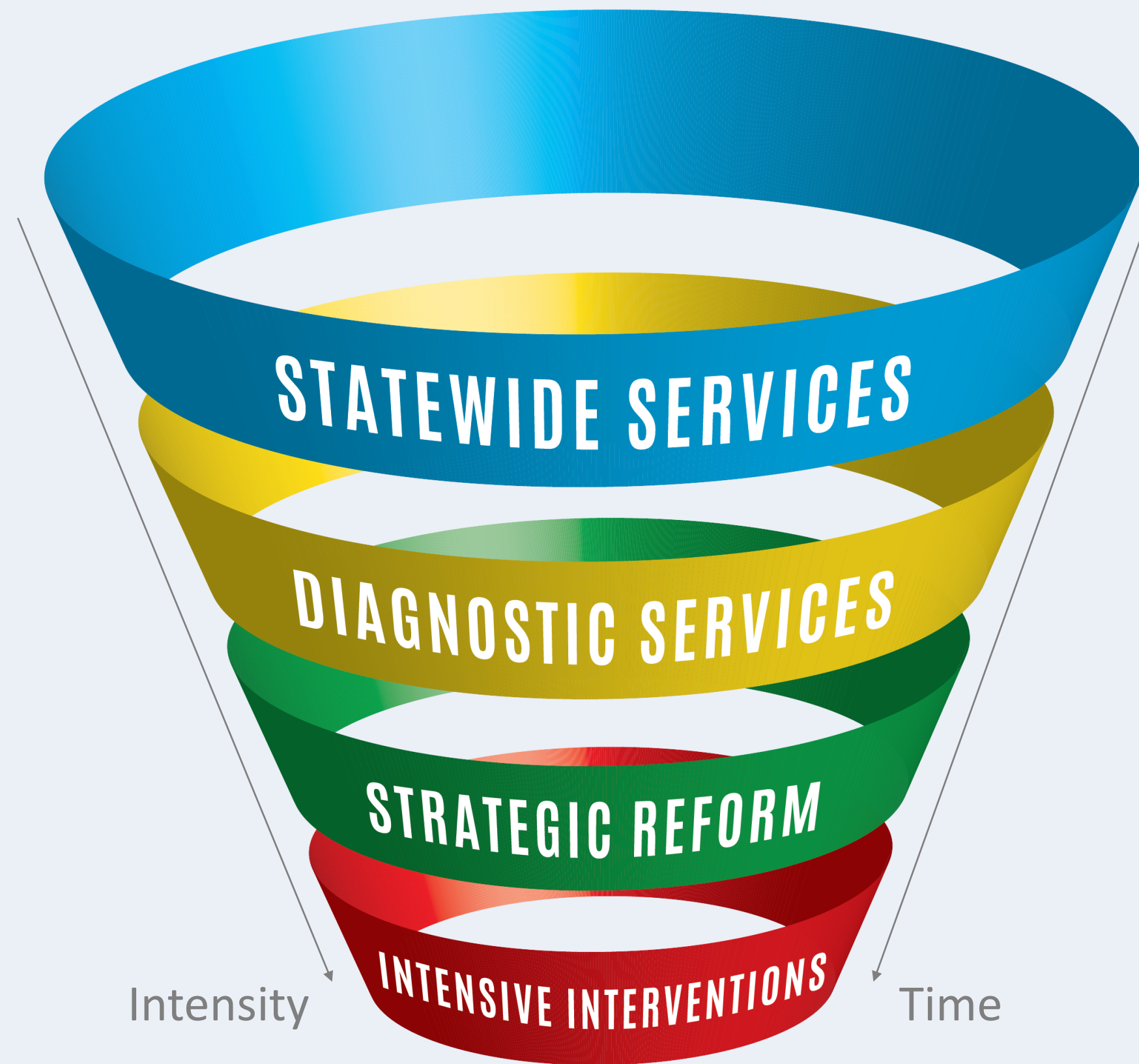
# Navigator

Divisions working collaboratively to align core work processes with SBE Goals and Leandro Priorities.

[SBE/NCDPI Navigator-TEMPLATE](#)



## District and Regional Support



**Statewide Services:**  
Services with established systems and procedures across the agency designed to support all Public School Units.

**Diagnostic Services:**  
Services that provide evidence-based frameworks to assist targeted districts/schools in analyzing and determining the impact of practices on student learning and diagnosing strengths and weaknesses to support improved outcomes.

**Strategic Reform:**  
Services offered to support and monitor recurring low performing schools who have elected one of the four reform models to strategically address areas of improvement.

**Intensive Interventions:**  
Services offered to chronically low-performing schools and districts that require a collaborative partnership to identify and remedy root cause(s), develop highly focused incremental action steps with performance measures, and clear, monitored governance plans.

