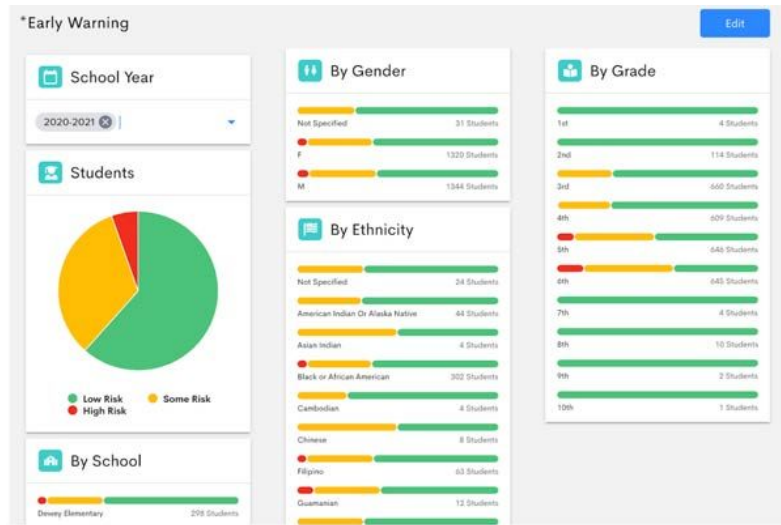


Santa Rosa City Schools

Data Dashboard Presentation eduCLIMBER

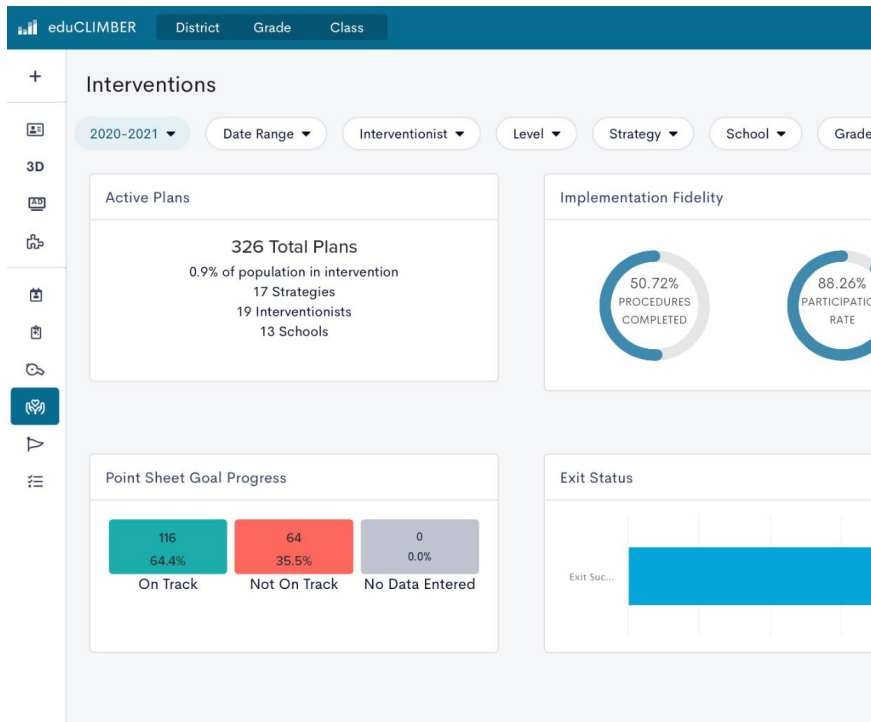


Why a Data Dashboard



- Data visualization
- Monitor and assess program effectiveness
- Multiple data points create complete visual picture
- Data includes: demographic, academic, social emotional, behavioral; attendance; intervention; and more
- Progress monitoring across all levels of a school system: district; site; classroom; individual student
- Sites can focus on the students in need of intervention and support

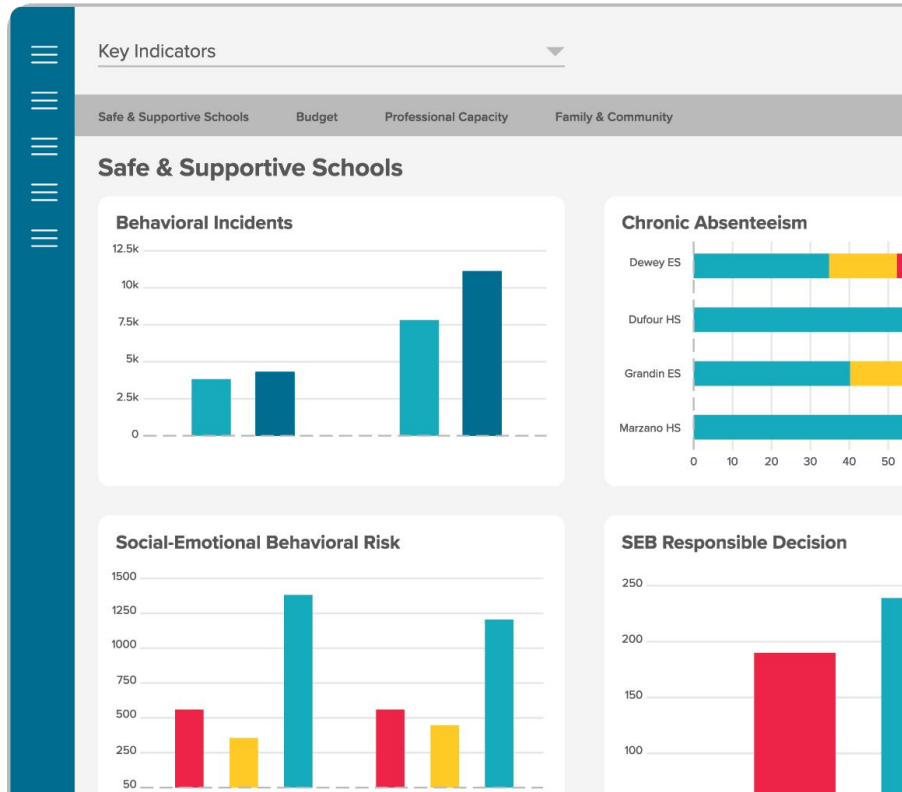
Build Your Best MTSS



Bolster your tiered supports with integrated whole child data and built-in tools designed for essential MTSS practices.

- Manage all academic and SEB interventions in one place with intervention analytics reports for fidelity and on-track status.
- Simplify MTSS meetings with a meeting module designed to help teams efficiently analyze data and quickly make informed decisions.
- Receive automated email alerts from a customizable early warning system to maximize prevention and early intervention.

Drive Student Growth with Interactive Data Visualizations



Leverage whole child data visualizations to inform resource allocation, professional development decisions, and system-level improvements.

- Use interactive dashboards to track KPIs, measure progress toward strategic initiatives and goals, and drive adjustments throughout the year.
- See longitudinal trends in student learning and needs, monitor and improve universal instruction, and evaluate intervention and program effectiveness.
- Use dynamic reporting to drill down through various filters, uncover patterns for groups of students, and inform equitable supports.

Advance Equity and Bolster Social-Emotional Behavior (SEB) Supports

Grade Class

sis Team Reports

Screening +
Attendance +
Behavior Incidents

										FastBridge aReading		
Student	Major Incidents	Minor Incidents	Attendance Rate	Fall	Winter	Spring						
Smetana, Haleigh	0	0	73.06	481	508	512						
Smith, Madison	0	0	100	510	516	525						
Snodgrass, Madison	0	1	88.16	512	516	519						
Soderman, Sovoeun	0	0	92.24	496	501	508						
Soper, Hopi	0	5	97.31	485	479	504						
Souphan, Xavier	0	0	98.78	518	516	520						
South, Tanya	0	0	95.92	510	511	521						
Sparks, DanielJeffery	0	4	100	493	495	509						
Speer, Johnny	0	0	89.39	463	470	477						
St John, Makena	0	0	96.54	453	470	489						
Stacey, Alexis	0	0	97.96	522	533	529						
Stahl, Lorna	0	0	96.73	521	530	525						
Stark, Arya	0	0	100	524	543	552						
Starks, Carson	0	6	99.59	476	474	483						
Starmer, Sara	0	2	98.78	471	488	492						
Starrett-Ingersoill, Nicholas	0	0	95.92	511	520	521						
Steckbauer, Menal	0	0	96.73	485	498	508						
Steffins, Danielle	0	0	95.92	528	529	532						
Stevens, Audrey	0	1	96.33	500	517	508						

Use efficient and effective tools to promote equitable outcomes and clear barriers to academic success.

- Explore data through a variety of lenses to identify patterns, guide key conversations, and inform professional development.
- Leverage a fully customizable PBIS suite, including behavior incident tracking, built-in SEB progress monitoring tools, and behavior plans.
- Use a built-in disproportionality calculator to identify patterns in behavior incidents and responses and reveal areas of inequity.

Comprehensive Data Plan Committee

Members

- Margaret Brady-long, MCHS, Teacher
- Heather Garcia-Ross, Educational Services, Teacher
- Karen Williamson, Educational Services, Teacher
- Heidi Pedrazzetti, RHS, Counselor
- Johana Perdomo, PHS, Counselor
- Andrea Correia, PHS, Vice Principal
- Stacy Desideri, PHS, Principal
- Laura Hendrickson, HCMS, Principal
- Lauren Liotta, LBES, Principal
- Amy Schlueter, RVMS, Principal
- Kristen Vogel, SR Charter for the Arts, Principal
- Kimberlee Armstrong, Educational Services, Associate Superintendent
- Kelley Dillon, Educational Services, Executive Director
- Matt Dunkle, Educational Services, Director
- Kaesa Enemark, Educational Services, Coordinator
- Alisa Haley, Educational Services, Director
- Rand Van Dyke, Business Services, Director
- Tim Zalunardo, Educational Services, Executive Director



Committee Meetings

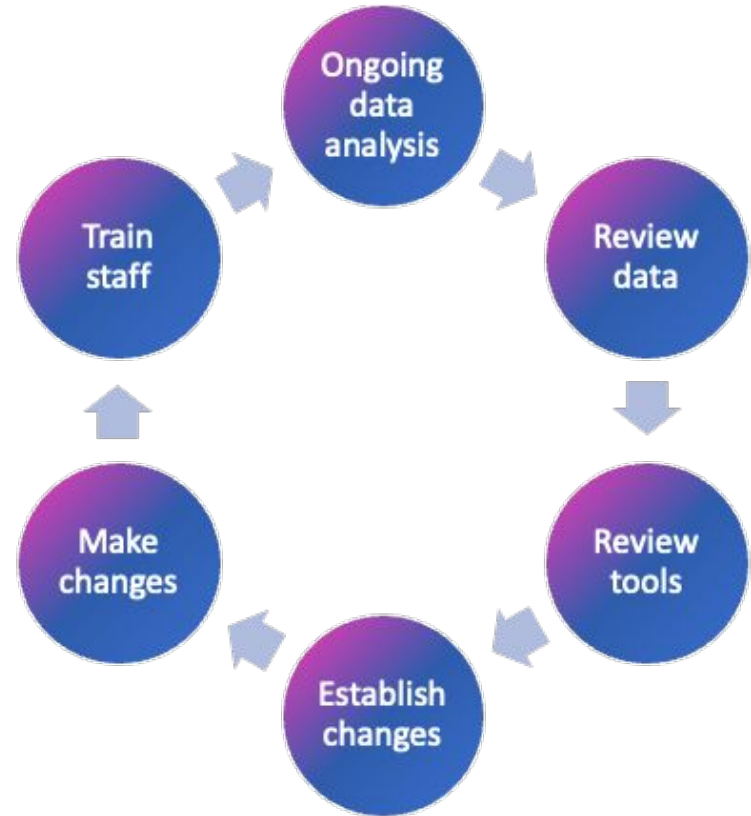


- Goal setting
- Analyzing previous implementation work
- Establishing needs and wants
- Data dashboard presentations
- Consensus decision on a data dashboard
- Implementation timeline
- Partnering with eduCLIMBER onboarding staff

Implementation Cycle

Implementation is **Ongoing**

- Initial Implementation:
 - Import data
 - Set thresholds
 - Train district and site level administrators
 - Adjust thresholds
 - Continue training
 - Initial analysis
- Ongoing data analysis and future planning
- Expand training including school site personnel
- Annual/ongoing onboarding and training for new staff
- Refresh and broaden training for current users



Contract



Client Order

Q-146973

530 Technology Dr Suite 100
Irvine, California 92618
(949) 656-3133
<https://www.illuminateeducation.com/>

Prepared Date: 4/29/2022
Valid Through: 5/29/2022

Prepared By: Scott Odegard

Start Date: 7/1/2022
End Date: 6/30/2023
Quote Term: 12

Customer: Santa Rosa City Schools
Address: 211 Ridgway Ave
Santa Rosa, California 95401

Contact: Tim Zalunardo
Phone: 707.528.5181

Year 1

Dates: 7/1/2022 - 6/30/2023

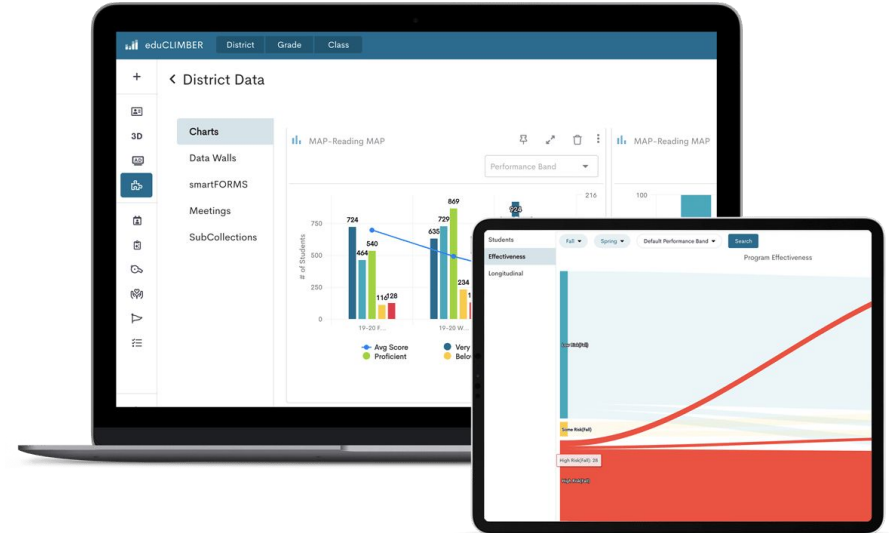
QTY	PRODUCT	DESCRIPTION	UNIT	TOTAL
15,472	eduCLIMBER, Software License	eduCLIMBER allows districts to easily import and visualize a wide range of student data including academic, SEL, behavior, attendance, and intervention. Districts can then create custom dashboards to identify ways to improve student achievement.	\$5.75	\$88,964.00
15,472	Achievement Dashboard, Software License	Achievement Dashboard is the easiest, most user-friendly district dashboarding tool on the market by providing school/district leaders with a way to present key insights via customizable visualizations.	\$0.00	\$0.00
1	Product Implementation: Level 2, eduCLIMBER	eduCLIMBER site setup and initial configuration. District size under 30,000 students.	\$4,250.00	\$4,250.00
1	»» Level 2 Onboarding, eduCLIMBER	Dedicated guidance from a Customer Success Manager through a comprehensive change framework and eduCLIMBER system setup.	Included	
1	»» Level 2 Data Integration, eduCLIMBER	Extraction, import, and validation of required data for eduCLIMBER site setup.	Included	
1	»» System Management Workshop, eduCLIMBER	Half-day virtual Implementation training session on eduCLIMBER for System Administrators.	Included	
1	Product Implementation: Level 2, Achievement Dashboard	Achievement Dashboard site setup and initial configuration. District size under 30,000 students.	\$4,250.00	\$4,250.00
1	»» Level 2 Onboarding, Achievement Dashboard	Dedicated guidance from a Customer Success Manager through a comprehensive change framework and Achievement Dashboard system setup.	Included	
1	»» Level 2 Data Integration, Achievement Dashboard	Extraction, import, and validation of required data for Achievement Dashboard site setup.	Included	
1	»» System Management Workshop, Achievement Dashboard	Half-day virtual Implementation training session on Achievement Dashboard for System Administrators.	Included	

- The contract will have a one time implementation cost, as well as ongoing costs associated with it. Annual professional development costs will vary depending on multiple factors.
- The SRCS Local Control Accountability Plan, Goal 1 - Actions 1 and 27, have monies dedicated to the one time and ongoing costs.
- The contract creates a relationship between Illuminate eduCLIMBER staff and SRCS employees beyond the fine print. It includes an onboarding team and an account manager who will continue to work with SRCS for the life of the contract.

A Data Informed System

A data informed educational system is able to:

- Understand that data is at the root of supporting student achievement
- Assess effectiveness of programs and services at various levels
- Reflect on growth and challenges
- Makes data-driven decisions about where to invest time, energy, and resources
- Communicate data clearly with its families and community



Anticipated Timeline

Major Milestones

- ❑ **May 2022** - Initial data connections
- ❑ **May/June** - Initial system configuration
- ❑ **Summer 2022** - Additional data connections
- ❑ **Fall 2022** - Data committee finalizes system setup and configuration
- ❑ **January 2023** - District and Site Administrators are trained and begin using eduCLIMBER
- ❑ **Spring 2023** - Data committee works on implementation for teachers
- ❑ **Fall 2023** - Teachers begin using eduCLIMBER