

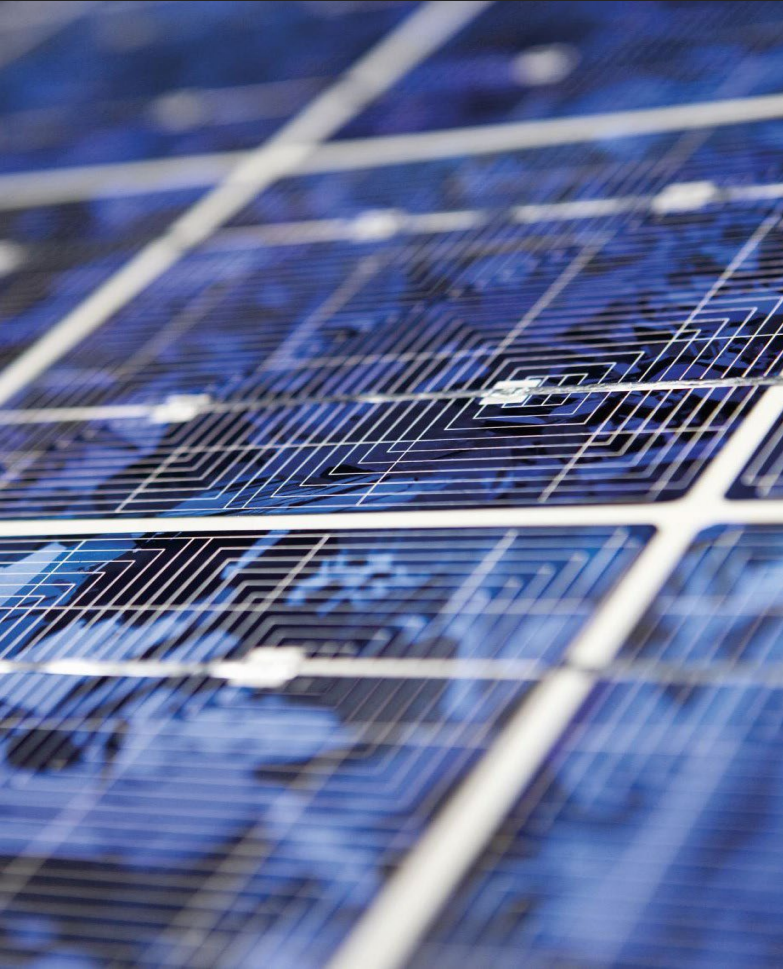


Santa Rosa City Schools

District-Wide Solar PV Project

July 27, 2022

Project Summary



- Opportunity:** Install Approximately 4.5MW of Solar Across (20) Schools
- Scope of Work:** All systems shall be “covered carport” structures + (1)Roofing System
Includes ADA Compliance & New LED Lighting in Structures
- Approach:** Staff worked closely with site representatives to identify best possible locations at each school
- Funding Source:** Power Purchase Agreement (PPA 3rd party ownership)
= Zero Capital Required by District ; Immediate Savings
= Zero Operation & Maintenance (O&M) Costs by District
- Savings:** Year 1 Savings = \$145,332
30-Year NET Savings ~ \$31.1 M



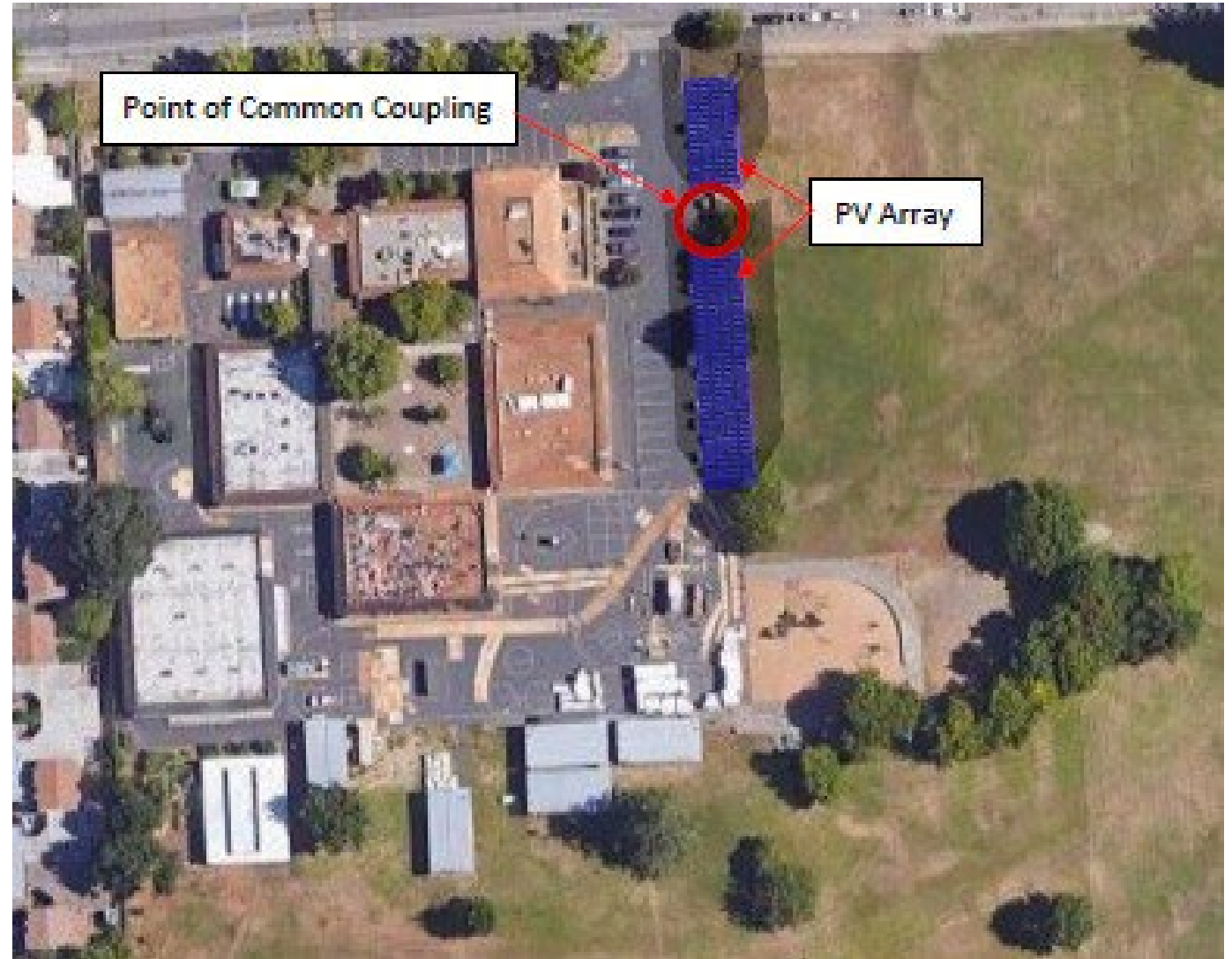
Project Benefits

- Environmental Stewardship & Leadership
- Shade Protection for Vehicles and Students/Staff
- No Capital Required
- Reduced Annual Electricity Bills
- Predictable/Fixed Electricity Bills for 25 Years
- 30 Year NET Savings Estimate ~ 31.1M
- No Maintenance Required by District Staff
- Local Power Generation

Abraham Lincoln ES

- System Size: 97.2 KW
- Covered Parking Spaces: 21
- *Electricity Offset: 76%

*Not sized at 100% to allow for future efficiency projects

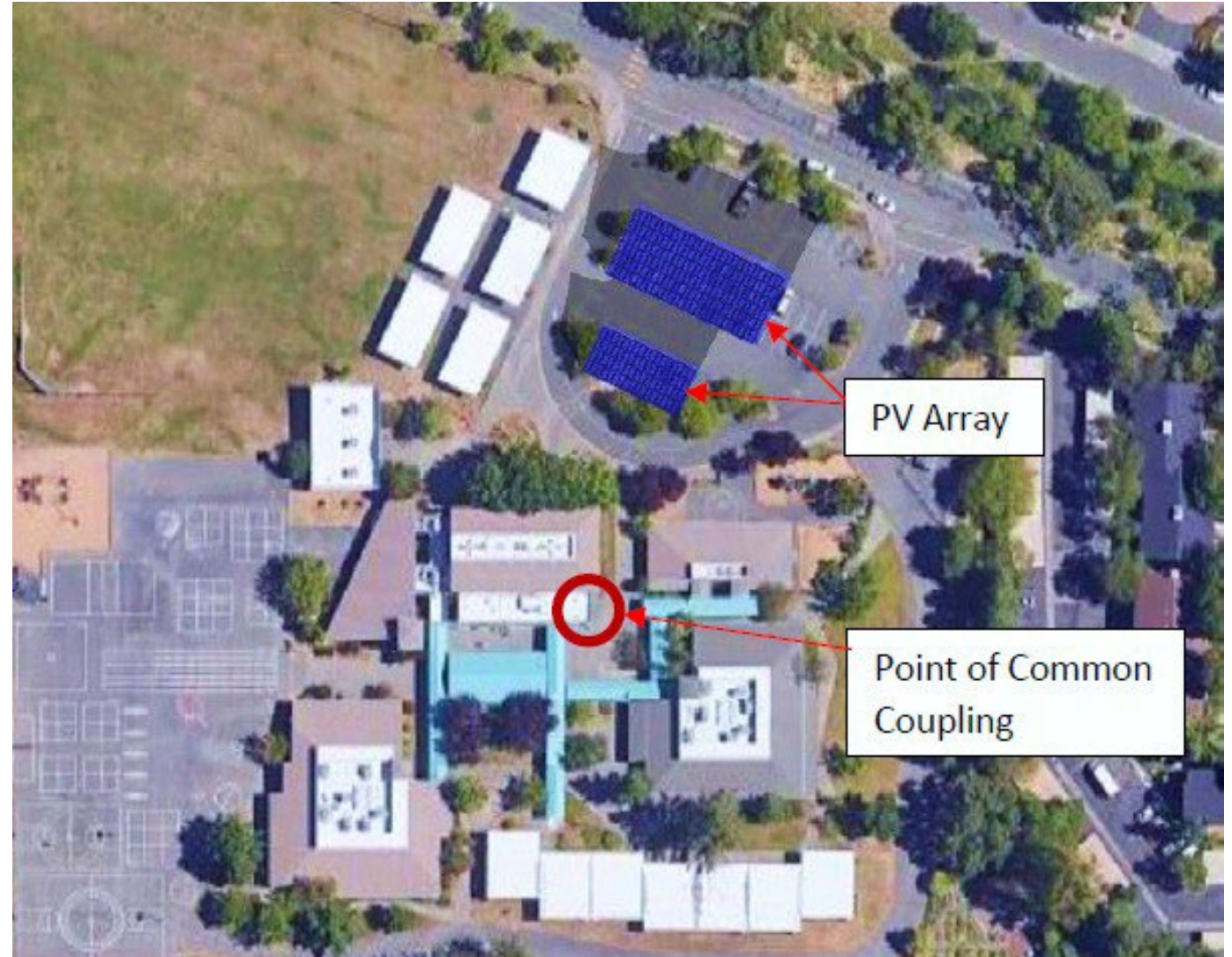


Albert Biella ES

- System Size: 103.5 KW
- Covered Parking Spaces: 26

*Electricity Offset:70%

*Not sized at 100% to allow for future efficiency projects



Brook Hill ES

- System Size: 72.9 KW
- Covered Parking Spaces: 0

*Electricity Offset: 59%

*Not sized at 100% to allow for future efficiency projects



Hilliard Comstock MS

- System Size: 267.3 KW
- Covered Parking Spaces: 60

*Electricity Offset: 90%

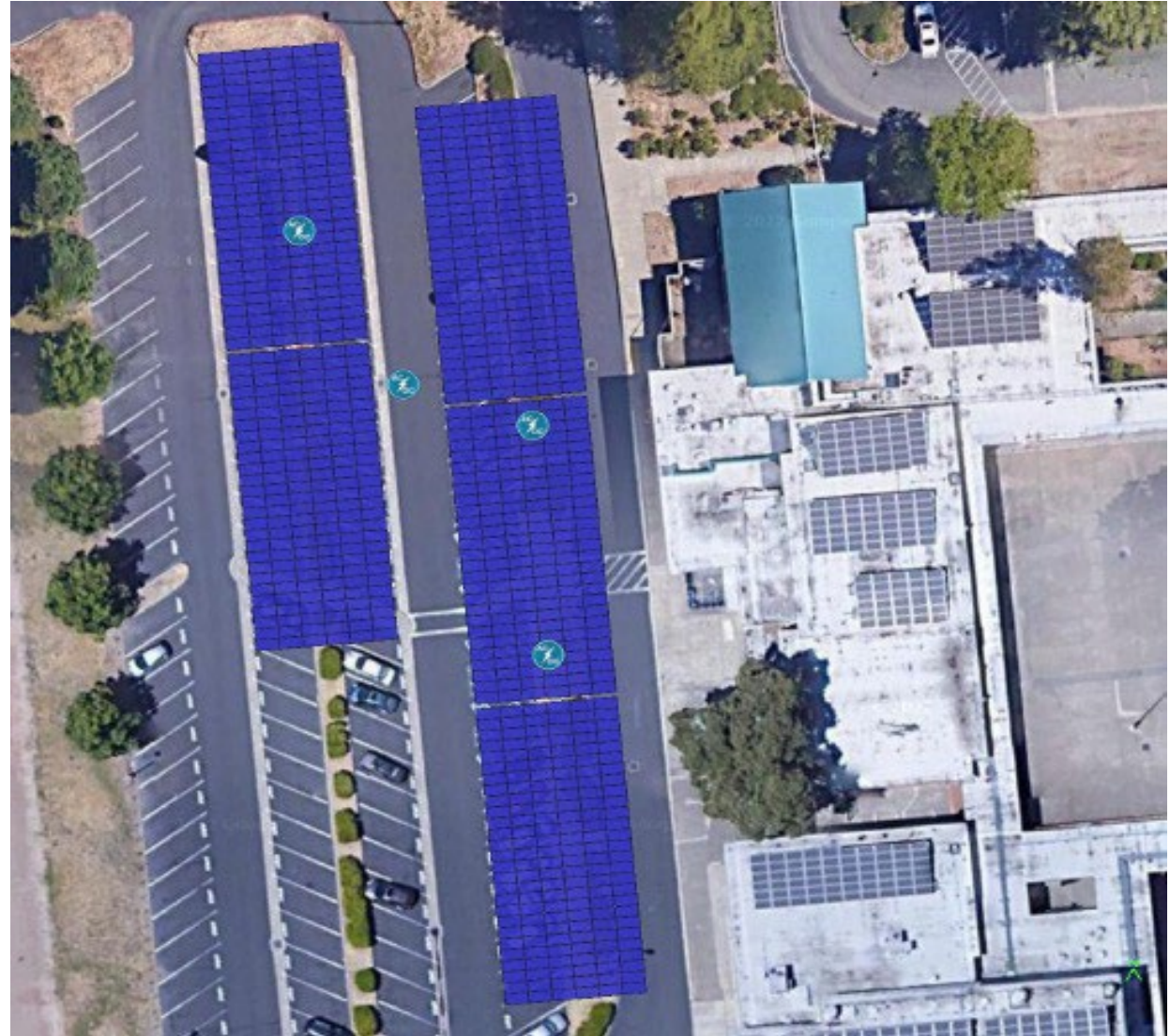
*Not sized at 100% to allow for future efficiency projects



Cesar Chavez Learning Academy

- System Size: 364.5 KW
- Covered Parking Spaces: 106
- *Electricity Offset: 87%

*Not sized at 100% to allow for future efficiency projects



District Office / Ridgway

- System Size: 291.6 KW
- Covered Parking Spaces: 42
- *Electricity Offset: 85%

*Not sized at 100% to allow for future efficiency projects

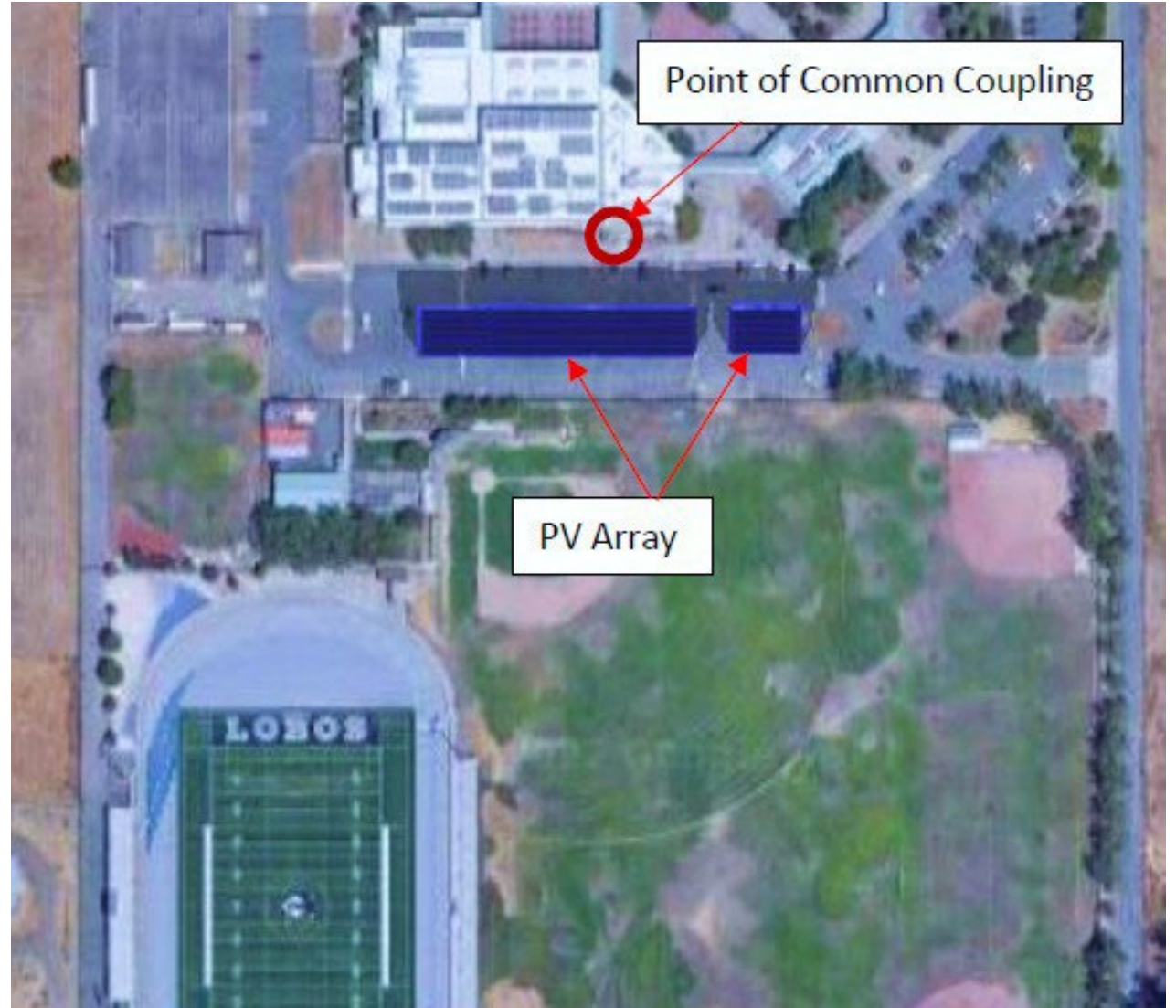


Elsie Allen HS

- System Size: 243 KW
- Covered Parking Spaces: 84

*Electricity Offset: 96%

*Not sized at 100% to allow for future efficiency projects



Helen Lehman ES

- System Size: 72.9 KW
- Covered Parking Spaces: 0

*Electricity Offset: 58%

*Not sized at 100% to allow for future efficiency projects

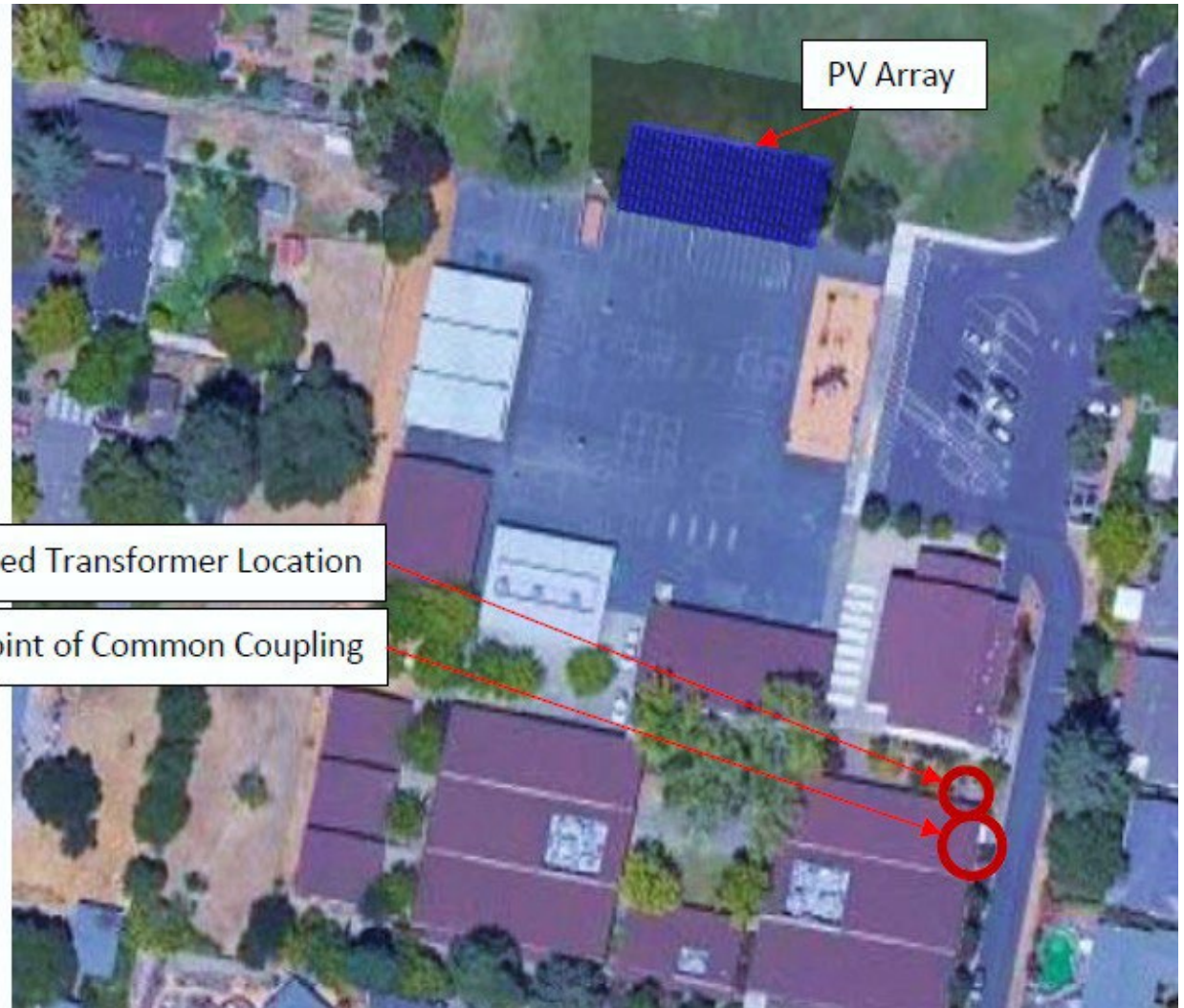


Hidden Valley ES

- System Size: 72.9 KW
- Covered Parking Spaces: 0

*Electricity Offset: 45%

*Not sized at 100% to allow for future efficiency projects

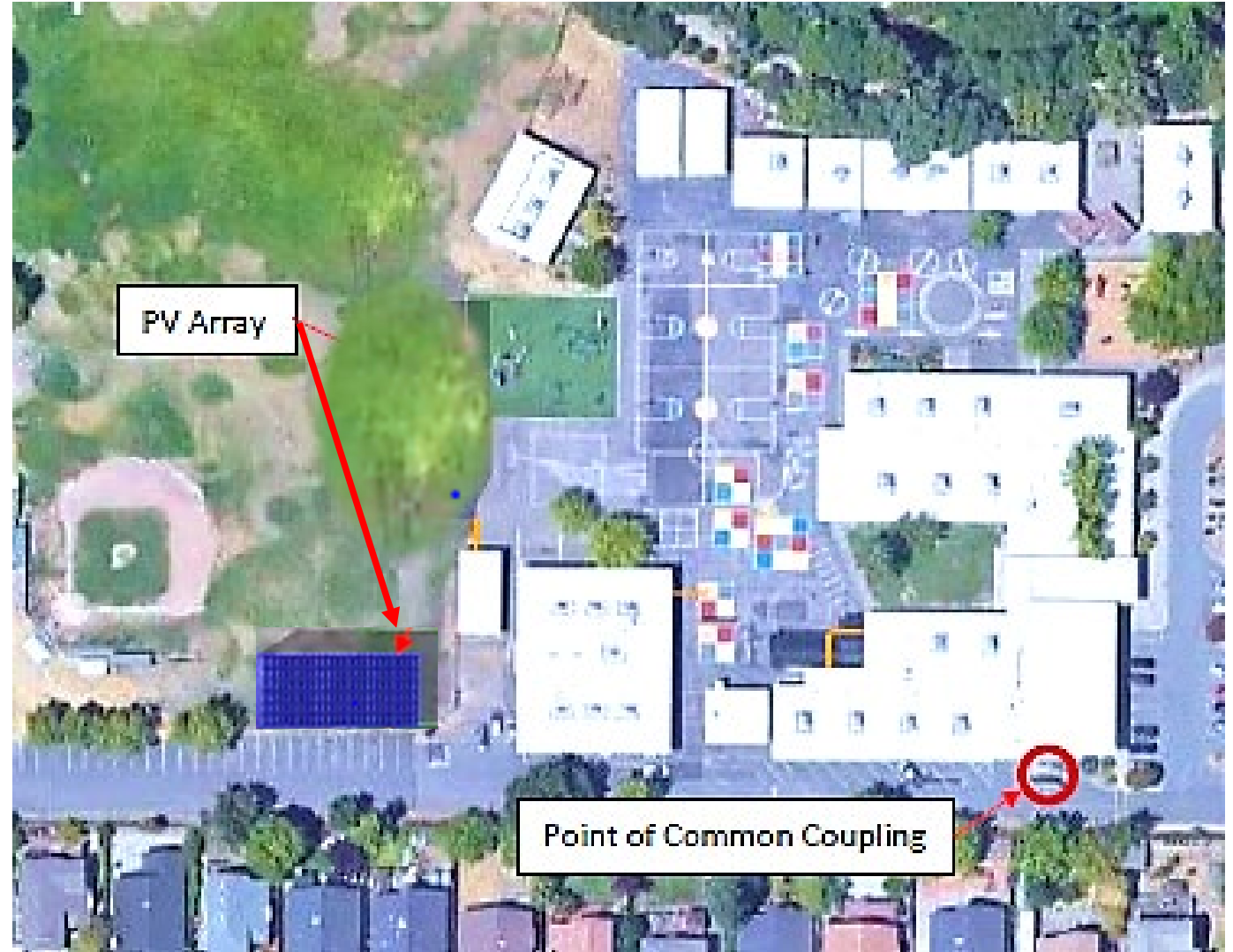


James Monroe ES

- System Size: 72.9 KW
- Covered Parking Spaces: 0

*Electricity Offset: 70%

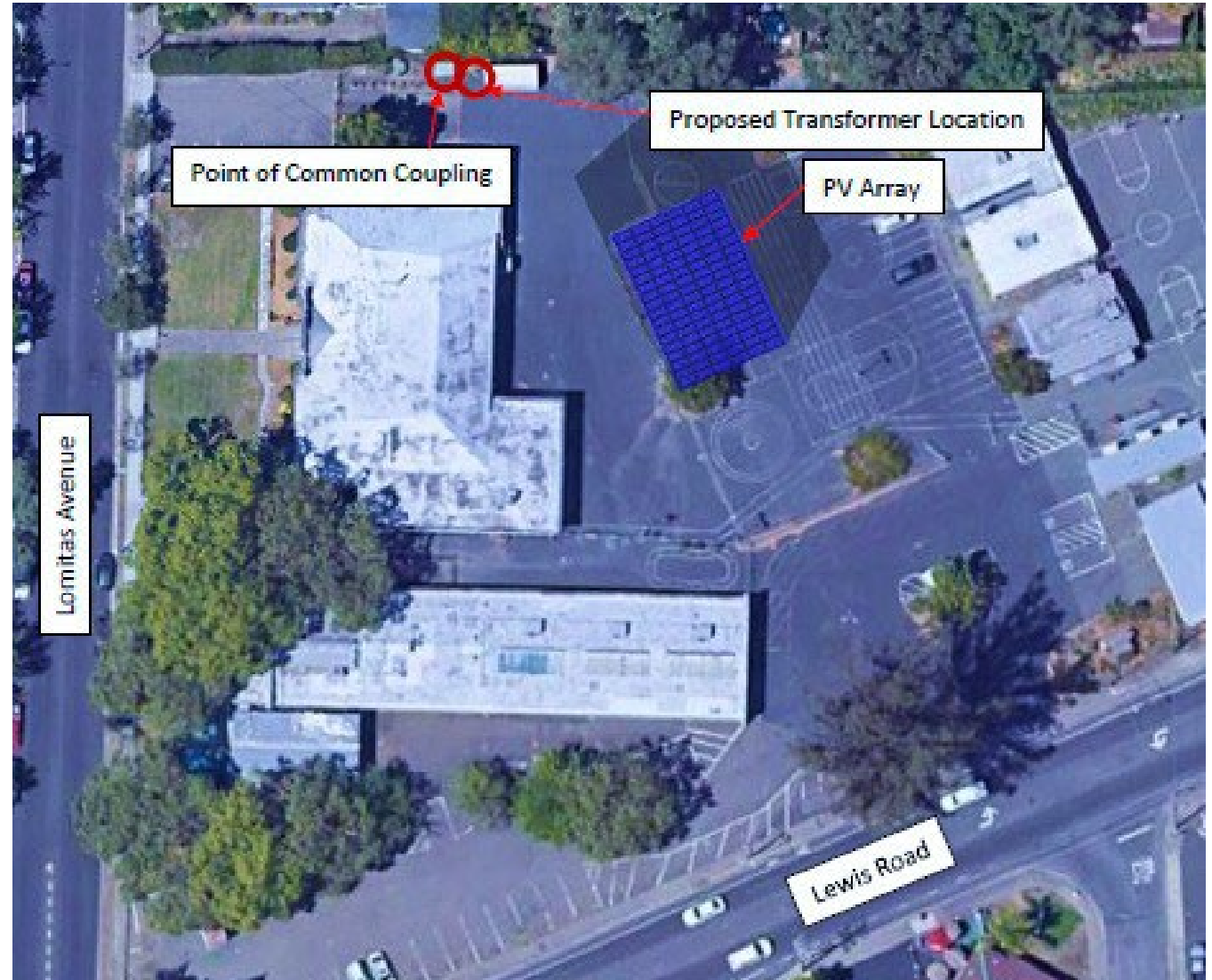
*Not sized at 100% to allow for future efficiency projects



Lewis Opportunity School

- System Size: 48.6 KW
- Covered Parking Spaces: 0
- *Electricity Offset: 76%

*Not sized at 100% to allow for future efficiency projects



Maria Carrillo HS

- System Size: 437.4 KW
- Covered Parking Spaces: 98

*Electricity Offset: 98%

*Not sized at 100% to allow for future efficiency projects



Montgomery HS

- System Size: 558.9 KW
- Covered Parking Spaces: 162

*Electricity Offset: 91%

*Not sized at 100% to allow for future efficiency projects

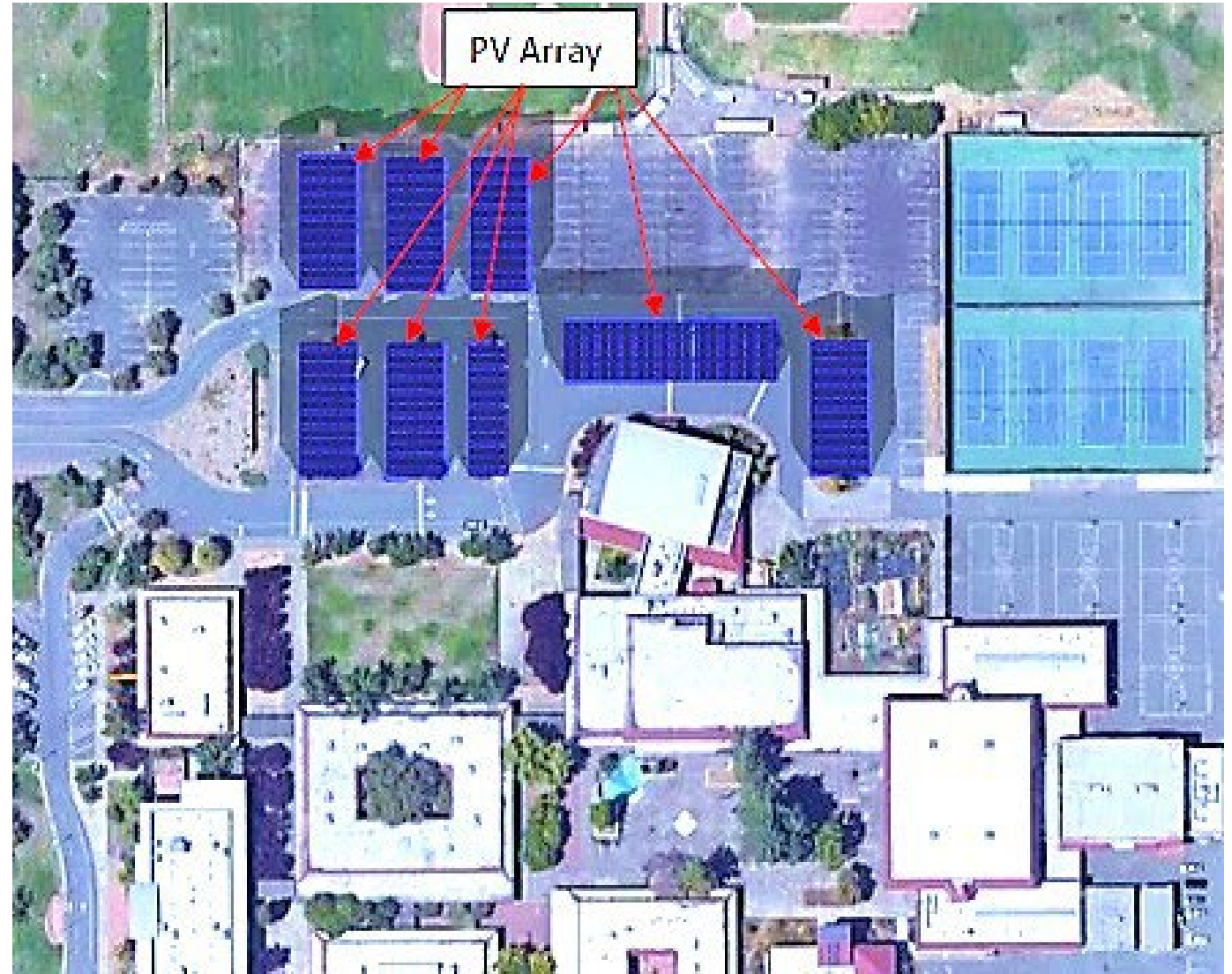


Piner HS

- System Size: 607.5 KW
- Covered Parking Spaces: 169

*Electricity Offset: 94%

*Not sized at 100% to allow for future efficiency projects



Rincon Valley MS

- System Size: 145.8 KW
- Covered Parking Spaces: 0

*Electricity Offset: 46%

*Not sized at 100% to allow for future efficiency projects



Point of Common Coupling

PV Array

Santa Rosa Charter for the Arts

- System Size: 96.8 KW
- Covered Parking Spaces: 0
- *Electricity Offset: 52%

*Not sized at 100% to allow for future efficiency projects



Santa Rosa HS

- System Size: 558.9 KW
- Covered Parking Spaces: 154

*Electricity Offset: 94%

*Not sized at 100% to allow for future efficiency projects



Santa Rosa MS

- System Size: 145.8 KW
- Covered Parking Spaces: 0

*Electricity Offset: 41%

*Not sized at 100% to allow for future efficiency projects

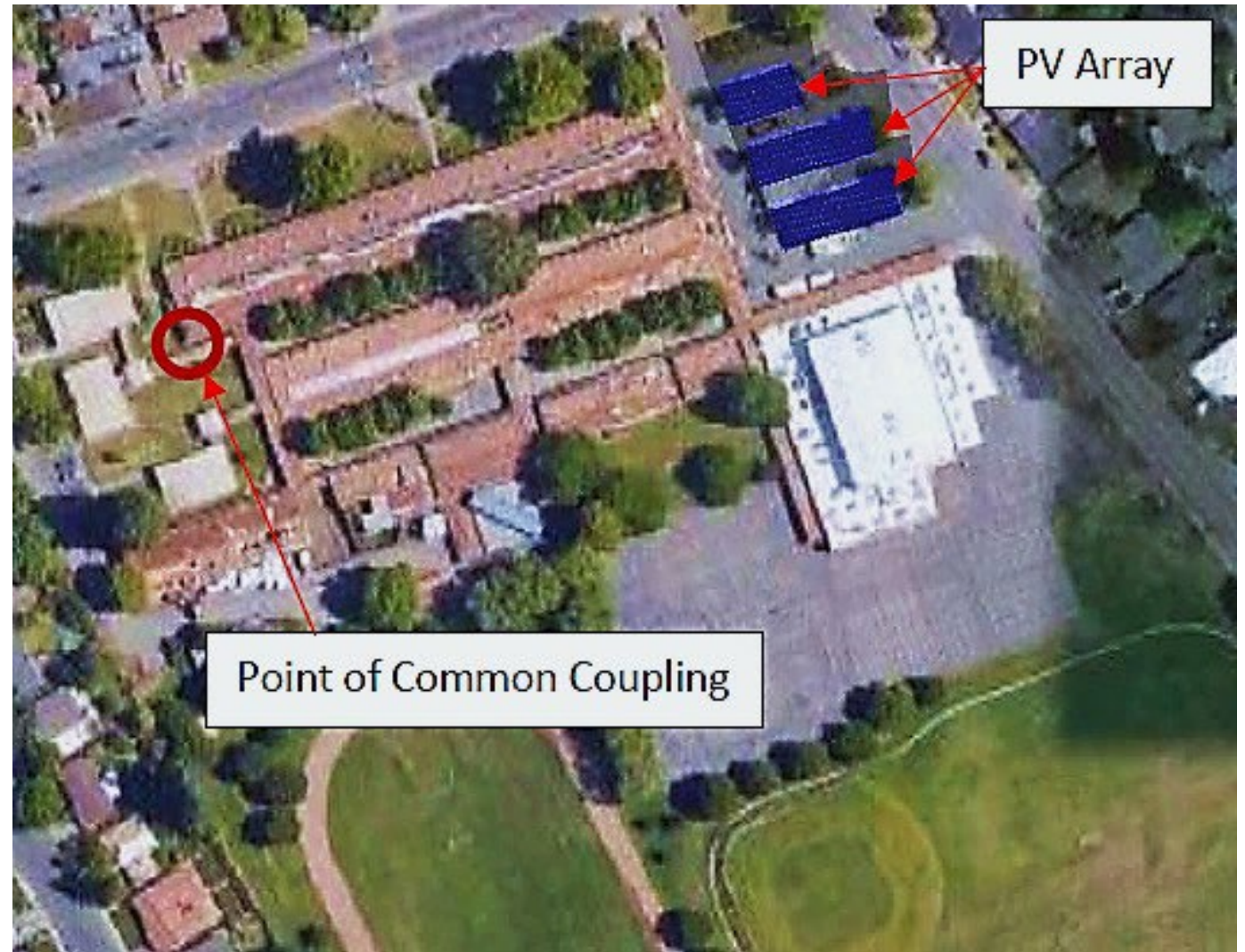


Herbert Slater MS

- System Size: 168.8 KW
- Covered Parking Spaces: 58

*Electricity Offset: 67%

*Not sized at 100% to allow for future efficiency projects



Steele Lane ES

- System Size: 72.9 KW
- Covered Parking Spaces: 0

*Electricity Offset: 57%

*Not sized at 100% to allow for future efficiency projects



Sites Not Included

Luther Burbank:

Limited physical space for panel locations resulting in high normalized cost of electricity: not financially viable

French-American Charter:

Located on a fault line: not financially viable

Proctor Terrace:

Limited physical space for panel locations resulting in high normalized cost of electricity; not financially viable