



North Carolina State Board of Education Strategic Priorities

Planning and Work Session

August 30, 2022

Maria Pitre-Martin, PhD

Director of Board Operations

Daniel Cohen-Vogel, PhD

Dataworks Partners



Legs of A Journey



- A flight leg is a trip of an aircraft, from take-off to landing.
- Generally, the term is used to imply a multi-leg flight.

SBE Strategic Goal Review



Eliminate opportunity gaps between students by 2025.



Improve school and district performance by 2025.



Increase educator preparedness to meet the needs of every child by 2025.



NC State Board of Education Strategic Planning Timeline

January 2019	Presented updates & timeline for Strategic Plan
February 2019	Presented incremental steps for goal development and getting feedback
March 2019	Shared updates to incremental steps and overall plan and started circulating plan to stakeholder groups
April 2019	Continued to get feedback from stakeholders and collected feedback
May 2019	Shared feedback from Strategic Plan "tour" (form responses, anecdotes)
June 2019	Shared draft incorporating all feedback from stakeholders and Board members

Goal I-Eliminate opportunity gaps by 2025

Objective 1-Decrease the number of exclusionary discipline practices by subgroup (suspensions and expulsions)

Objective 2-Improve school climate measures across all schools and grade levels

- **Component 1-Increase the number of school-based mental health professionals**
- **Component 2-Increase opportunities to develop healthy habits in students**
- **Component 3-Increase the number of schools and districts utilizing innovative "Breakfast After the Bell, Summer Meals, and At-Risk Afterschool Meals" programs to keep students fed, healthy and engaged**

Goal I-Eliminate opportunity gaps by 2025

Objective 3-Increase percentage of 4-year old children enrolled in state Pre-K from 22% to 34% (above the current national average)

Objective 4-Decrease the high school dropout rate for each subgroup

- **Component 1-Increase average composite score on state-mandated college entrance exam**
- **Component 2-Increase access, readiness, and attainment of early postsecondary opportunities (EPSOs), such as AP, IB, CTE, dual credit/enrollment, work-based learning, apprenticeships**

Goal I-Eliminate opportunity gaps by 2025

Objective 5-Decrease number of students taking remedial courses in college

Objective 6-Increase the number of educators of color in schools across North Carolina

Objective 7-Increase the number of charter schools providing equitable access to economically disadvantaged students or reflecting the LEA in which they are located

Goal II-Improve school and district performance by 2025

Objective 1-Allocate financial, business and technology resources according to State and Federal laws and State Board of Education policies

Objective 2-Increase the percentage of grades 3-8 math and ELA EOG subgroup test scores meeting the ESSA Yearly Measures of Interim Progress

Objective 3-Increase the percentage of students proficient in math by subgroup

Objective 4-Increase the percentage of students proficient in reading by the end of 3rd grade

Goal II-Improve school and district performance by 2025

Objective 5-Increase the percentage of high school reading subgroup test scores meeting the ESSA Yearly Measures of Interim Progress

Objective 6-Increase the percentage of students proficient in science by subgroup

Objective 7-Increase number of schools meeting or exceeding growth measure by subgroup

- **Component 1-Increase the percentage of schools with charter-like flexibilities (Innovative Schools, Innovation Zones, Restart Schools, Renewal School Districts, Lab Schools) meeting or exceeding annual expected growth**

Objective 8-Increase the number of charter schools meeting or exceeding academic, operational, and financial goals

Objective 9 - Increase the number of qualified and well-prepared principals in every school

Goal III-Increase educator preparedness to meet the needs of every student by 2025

Objective 1-Increase the number of culturally-relevant, equity-focused resources for educators

Objective 2-Increase the number of mentors available to beginning educators

Objective 3-Strengthen relationships between educator preparation programs (EPPs), districts, and schools to foster collaboration and better teaching practice

Objective 4-Increase opportunities for educator engagement inside and outside of school

Strategic Goal Review



Eliminate opportunity gaps between students by 2025.



Improve school and district performance by 2025.



Increase educator preparedness to meet the needs of every child by 2025.

Legs of A Journey

Where are we in terms of our goals and objectives and why?

- **At the terminal/gate**
- **Starting the First Leg**
- **In the Second or Third Leg**
- **Journey Completed**

Dashboard Update with Dan

SBE Planning and Work Session August 30, 2022



Agenda

The background of the slide is a complex, abstract network of glowing blue and orange lines. These lines are interconnected and form a dense web of connections. Scattered throughout this network are numerous small, white, square icons, each containing a different symbol or character, representing data points or nodes in a network.

- **Dashboard Overview**
- **Status**
- **Data Challenges**
- **Next Steps**

DASHBOARD OVERVIEW

Purpose

Provide insights and support decisions.

- **Monitor progress toward strategic goals.**
- **Implement Leandro Comprehensive Remedial Plan.**
- **Identify potential policy and practice improvements.**



DASHBOARD OVERVIEW

Guiding Principles



- **Sustainable** =
 - *Consistent and Replicable (existing data sources, standards alignment, minimal burden)*
 - *Turnkey*

- **Flexible** = Changing landscape, new directions, variety of ways to look at metrics

- **Accessible** = user experience, links to and from

A map of the Mazowiecka region in Poland, showing towns like Ostroleka, Różan, Wyszkiw, Łochów, and Minsk Mazowiecki. A green horizontal line is drawn across the map.

STATUS

- **Milestones**
- **Current Activities**

Milestones

- Phase I completed March-August 2021
- Phase II re-started in May/June 2022
 - planned completion in summer 2023

Current Activities

- Implementing functional and data improvements
- Building additional visualizations
- Identifying gaps
- Additional collaborations, connections

Go to: www.dpi.nc.gov/about-dpi/state-board-education

At the bottom of the page:

Goals:

- Goal 1: Eliminate opportunity gaps by 2025
- Goal 2: Improve school and district performance by 2025
- Goal 3: Increase educator preparedness to meet the needs of every student by 2025

[State Board of Education Members and Staff](#) →

[SBE Meeting Information](#) →

[NC Strategic Dashboard Monitoring Tool](#) →

[Rules \(APA\)](#)

[NC Strategic Dashboard
Monitoring Tool](#)

[State Superintendent of Public
Instruction](#)

[Technology Services](#)

[Home](#)[Educators](#) ▾[Students & Families](#) ▾[Districts & Schools](#) ▾[Data & Reports](#) ▾[News](#) ▾[About DPI](#) ▾[NC DPI](#) » [About DPI](#) » [State Board of Education](#) » [NC Strategic Dashboard Monitoring Tool](#)

NC Strategic Dashboard Monitoring Tool

Opportunity, Performance, and Resources

This NC Strategic Dashboard Monitoring Tool displays information at the State, district and school level on educational opportunities, student performance, teacher qualifications, resource allocation and much more. You can use the Dashboard to review whether schools are making progress toward achieving the State's educational goals and priorities. In many cases, you can use the Dashboard to explore information about individual schools and particular subgroups of students, teachers or administrators at those schools. For example, you can use the Dashboard to

NC STATE BOARD OF EDUCATION | STRATEGIC PLAN

OPPORTUNITY

PERFORMANCE

HUMAN RESOURCES

Select a Year:

2017-2018

[Click here for State Level](#)

North Carolina

Select a Subgroup:

All | All Students

[Click here for District Level](#)

<<--Select a District-->>

[Click here for School Level](#)

<<--Select a School-->>

Goal 1: Eliminate Opportunity Gaps by 2025

Objective 1- Decrease the number of exclusionary discipline practices by subgroup (suspensions and expulsions)

In School Suspensions (per 1000 Students)

Short-Term Suspensions (per 1000)

Long-Term Suspensions (per 1000)

Opportunity

- [Exclusionary Discipline Practices \(S.P. Objective 1.1\)](#)
- [Percentage of 4-Year-Old Children in Pre-K \(S.P. Objective 1.3\)](#)
- [Kindergarten Readiness](#)
- [High School Drop-Out Rate \(S.P. Objective 1.4\)](#)
- [Chronic Absenteeism](#)
- [ACT Composite Scores \(S.P. Objective 1.4.1\)](#)
- [Percentage of Students in Early Postsecondary Opportunities \(AP, IB, Dual Enrollment\) \(S.P. Objective 1.4.2\)](#)
- [Percentage of Charter School Students Who Are Economically Disadvantaged \(S.P. Objective 1.7\)](#)

- **State, District, and School-level data available for most dashboards.**
- **Viewable by geographic or administrative units and student subgroups.**

Increase access, readiness, and attainment of early postsecondary opportunities (EPSOs)

NC STATE BOARD OF EDUCATION | STRATEGIC PLAN GOAL 1.4.2

STATE

DISTRICT

CUSTOM COMPARISON

Academic Reporting Year:

Select a Metric:

Select a Subgroup:

2018-2019

AP Percentage

Gender | Male

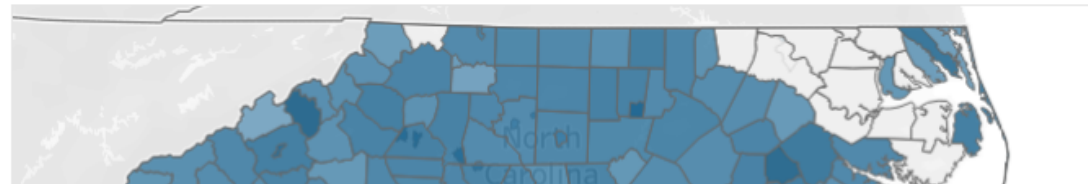
2018-2019 Gender | Male:

Show: Actual Value

42.7% AP Percentage

▲ 0.2% 2018-2019 compared to previous year

42.7%



District /Subgroup Comparison Tool

Year: 2018-19

Subgroup: Gender | Female

District Name: Winston Salem / Forsyth County Schools

Country Economic Tier: 2 - Distressed

SBE Region Name: Piedmont Triad

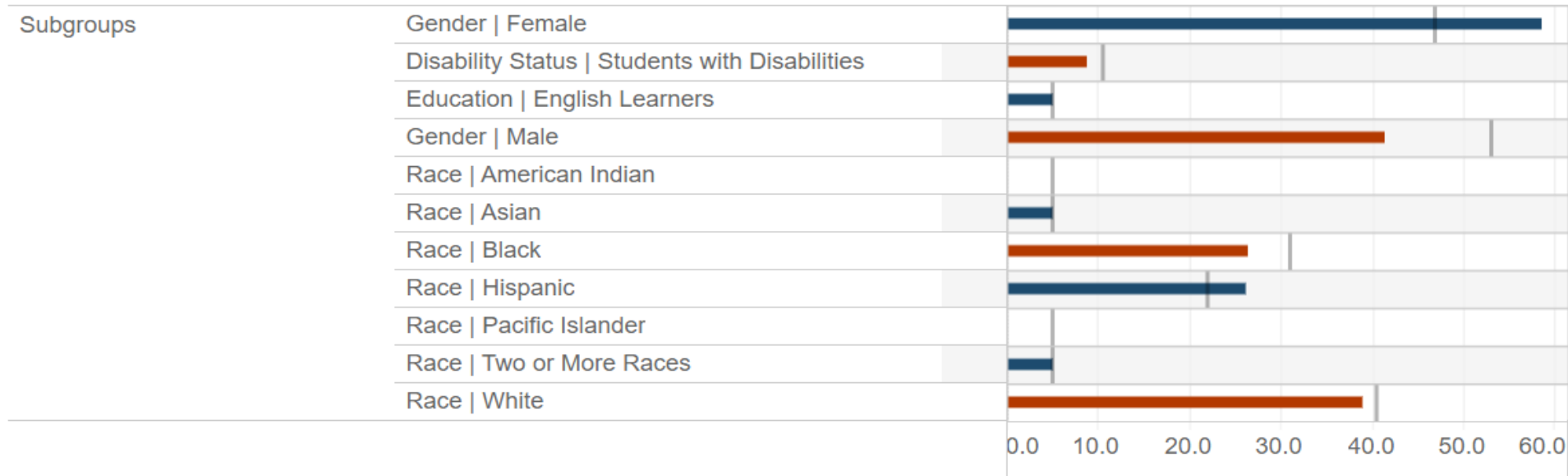
Compare By: Subgroup School

Compare To:

(If comparing by school) Group by:

Comparing Gender | Female to other Subgroup to Prior Year

Below Prior Year Above Prior Year No Comparable Value | Prior Year



Selected Info:

District: Rutherford County Schools

School Level: District

School Type - Grade Levels: District

Comprehensive / Targeted Support Initiative Designation:

County Economic Tier: 1 - Most Distressed

SBE Region Name: Western

Percent EDS: 42.6%

Comparison [Districts]/Schools selected

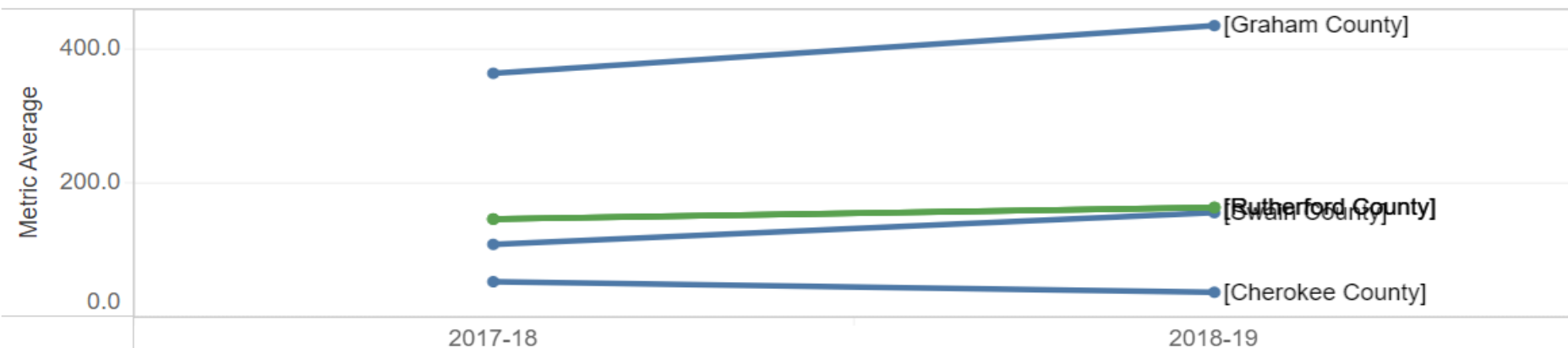
[Cherokee County] [Graham County] [Swain County]

In-school suspensions per 1000

[Rutherford County] vs. Comparison [Districts]/Schools

Show comparison as:

Individual Schools/Districts



Decrease Exclusionary Discipline Practices

NC STATE BOARD OF EDUCATION | STRATEGIC PLAN GOAL 1.1

STATE

DISTRICT

CUSTOM COMPARISON

Step 1: Select the metric, **district or school**, and subgroup that you want to compare to other district or schools

Note: Schools are formatted "[District Name] School Name". Districts are formatted "[District Name]"

Select a Metric:

In-school suspensions per 1000 ▼

Select a Subgroup:

All Students ▼

Select a [District] or School:

[Rutherford County] ▼


Select Comparison [Districts]/Schools

[Reset Filters](#)



DATA CHALLENGES


Define and Align

- **Define and compute new metrics** – DPI expertise; alignment with other data standards
 - **Build from current processes** – focus on existing data
 - **Gap analysis** - longer term opportunities
- 



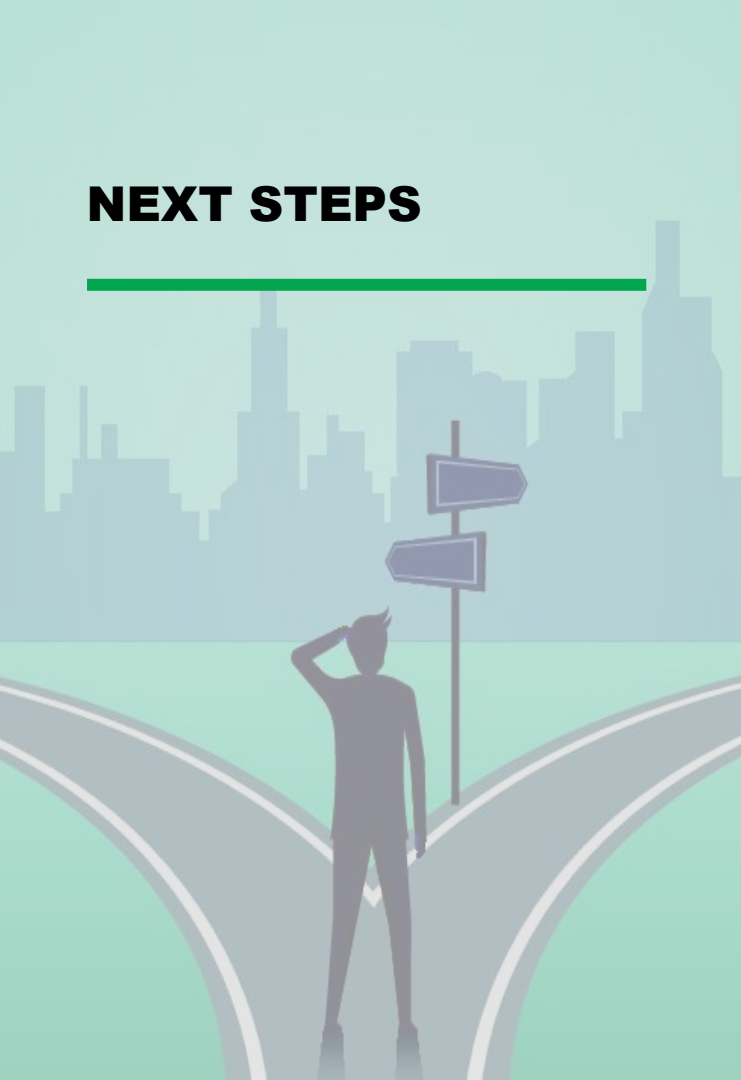
DATA CHALLENGES

Constraints

- **Covid impacts** - Data availability; significant impacts
 - **Subgroups** - Not all data are available at the same or desired level of detail
 - **Qualitative/unmeasured** - Not all goals are quantifiable
- 

NEXT STEPS

- **Additional planned metrics**
- **New metric conceptualization**
- **Dissemination**
- **Gap identification**



Legs of A Journey

Where are we in terms of our goals and objectives and why?

- **At the terminal/gate**
- **Starting the First Leg**
- **In the Second or Third Leg**
- **Journey Completed**





Any Questions



Any Questions