

School Mental Health Policy (SHLT-003) Report

Ellen Essick, Section Chief

NC Healthy Schools & Specialized Instructional Support



Policy Overview

Background Information and Timelines



Report Compliance

332 Total PSUs

- 330 reported
 - 1 of 207 charter schools not reported
 - 1 of 10 lab/regional schools not reported

Additional outreach is ongoing to ensure all required components are submitted.

115 LEAs
+
207
Charters
+
10 Lab &
Regional
=
332 Total

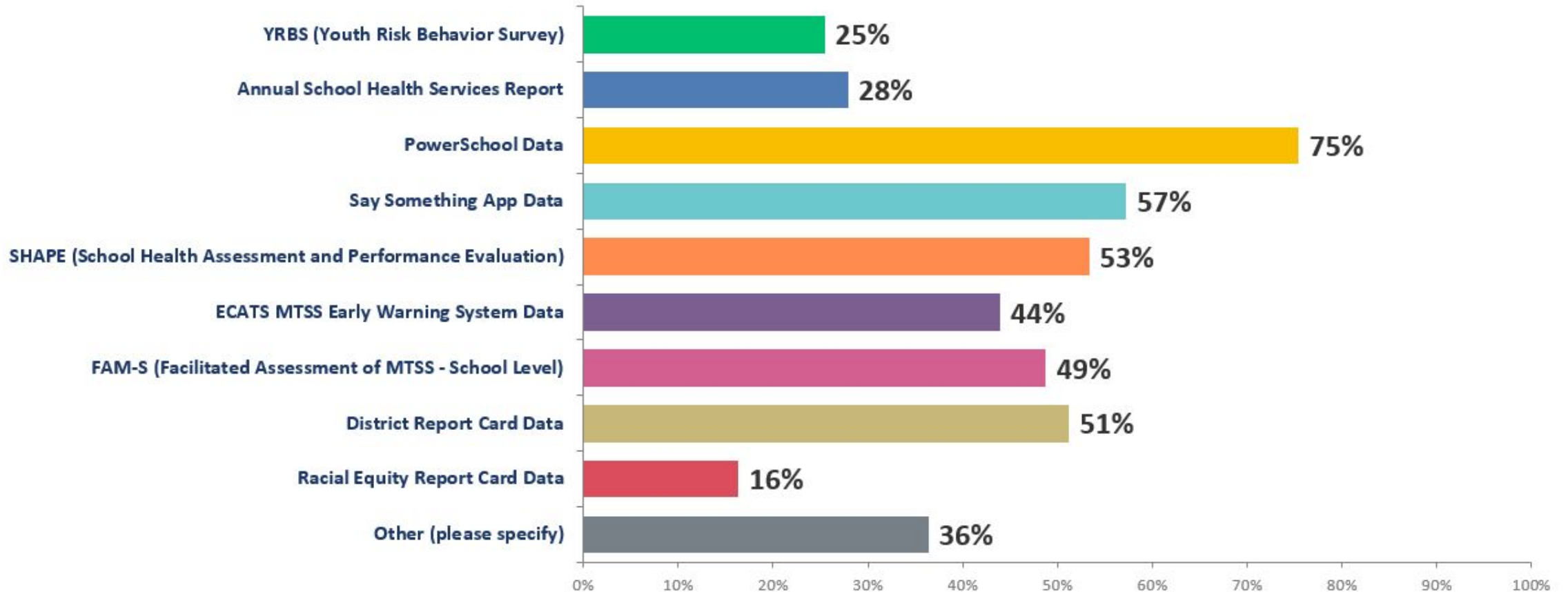
Report due September 15, 2022

Data represents compliance as of October 17, 2022



Data Sources

What data sources did you use to help identify priorities? (Choose all that apply.)



Data Sources Trends

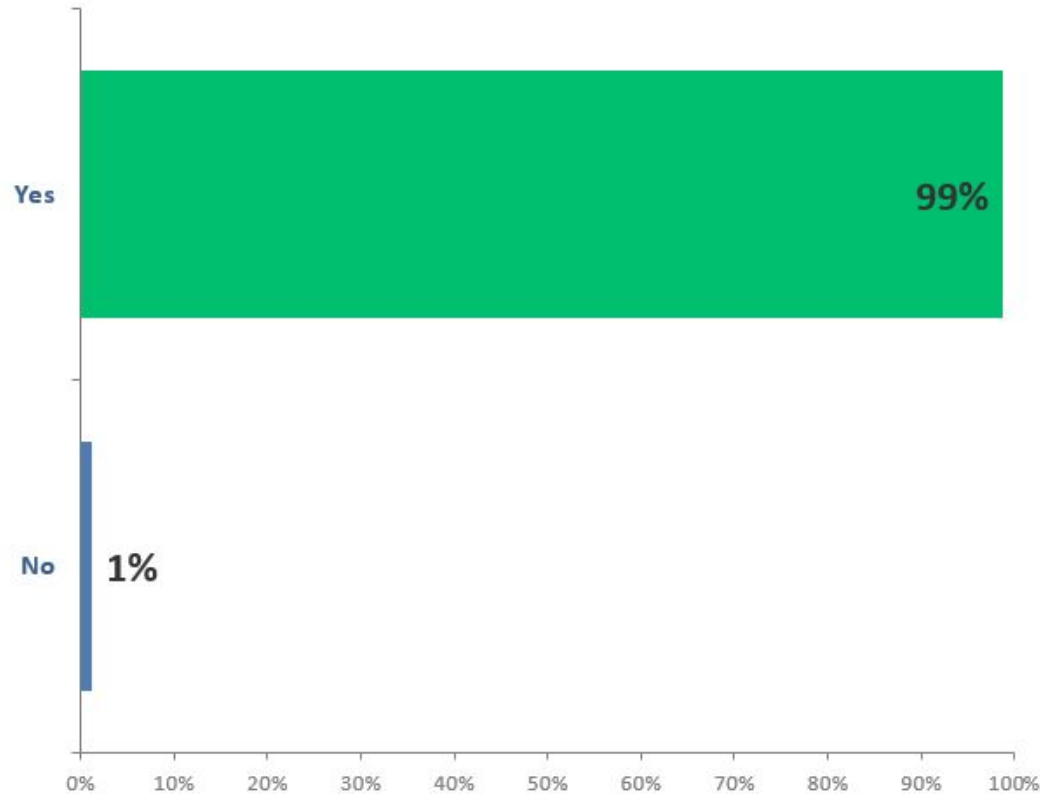
Data Source	Year 1 (2021)	Year 2 (2022)	Difference
PowerSchool	232	249	+17
Say Something App	145	189	+44
ECATS MTSS Early Warning System	121	145	+24
Annual School Health Services Report	78	92	+14

**Number of PSUs reflected in the chart.*

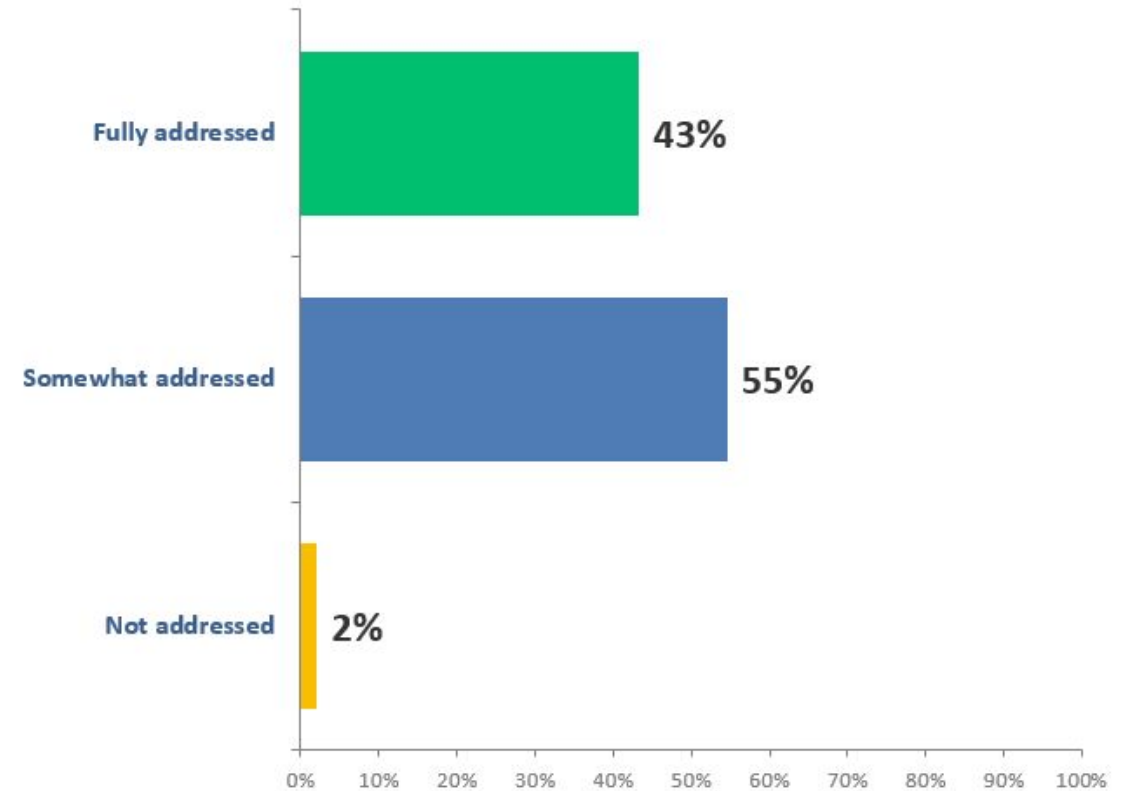


Universal Promotion

Does your plan address universal promotion of mental and social-emotional wellness and prevention through core instruction, curriculum, and school environment?

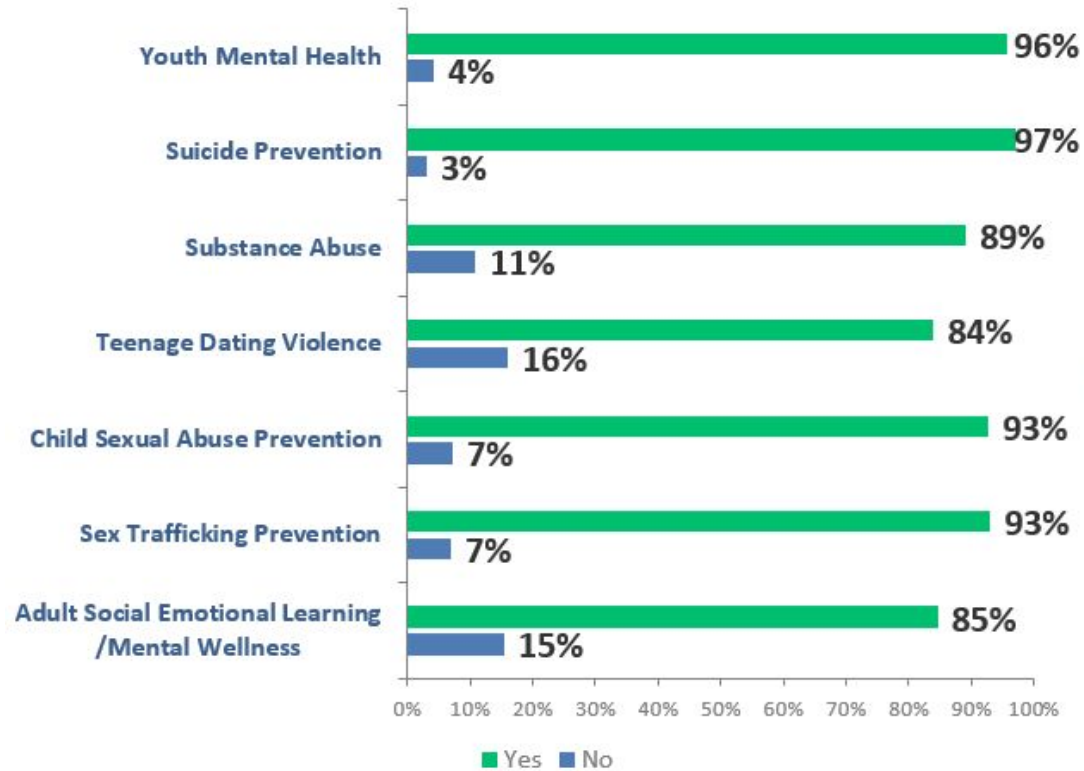


To what extent did your PSU address universal promotion of mental and social-emotional wellness and prevention through core instruction, curriculum, and school environment in the 2021-2022 school year?

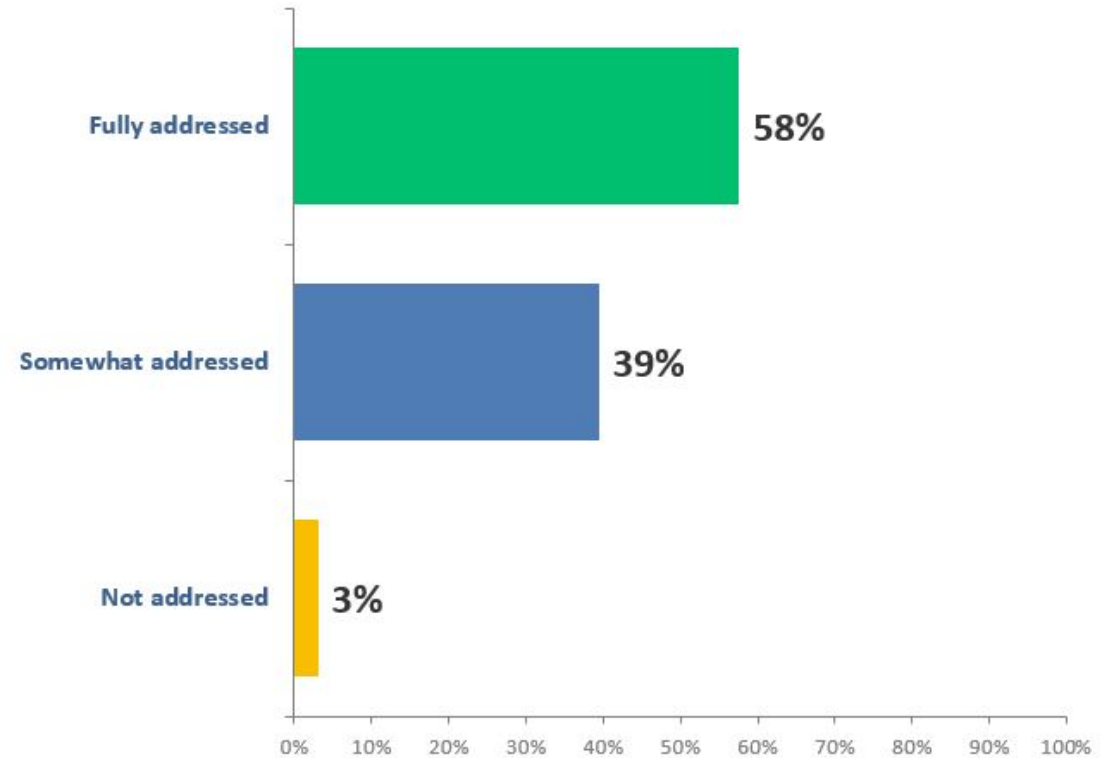


Training Program

Does your plan include a mental health training program provided to school employees addressing the topics listed below, including at least six hours of content for initial training occurring within first six months of employment and annual subsequent training of at least two hours?



To what extent did your PSU address mental health training programs provided to school employees addressing the topics of youth mental health, suicide prevention, substance abuse, teenage dating violence, child sexual abuse prevention, sex trafficking prevention, and adult social-emotional learning/mental wellness in the 2021-2022 school year?



Training Program Trends

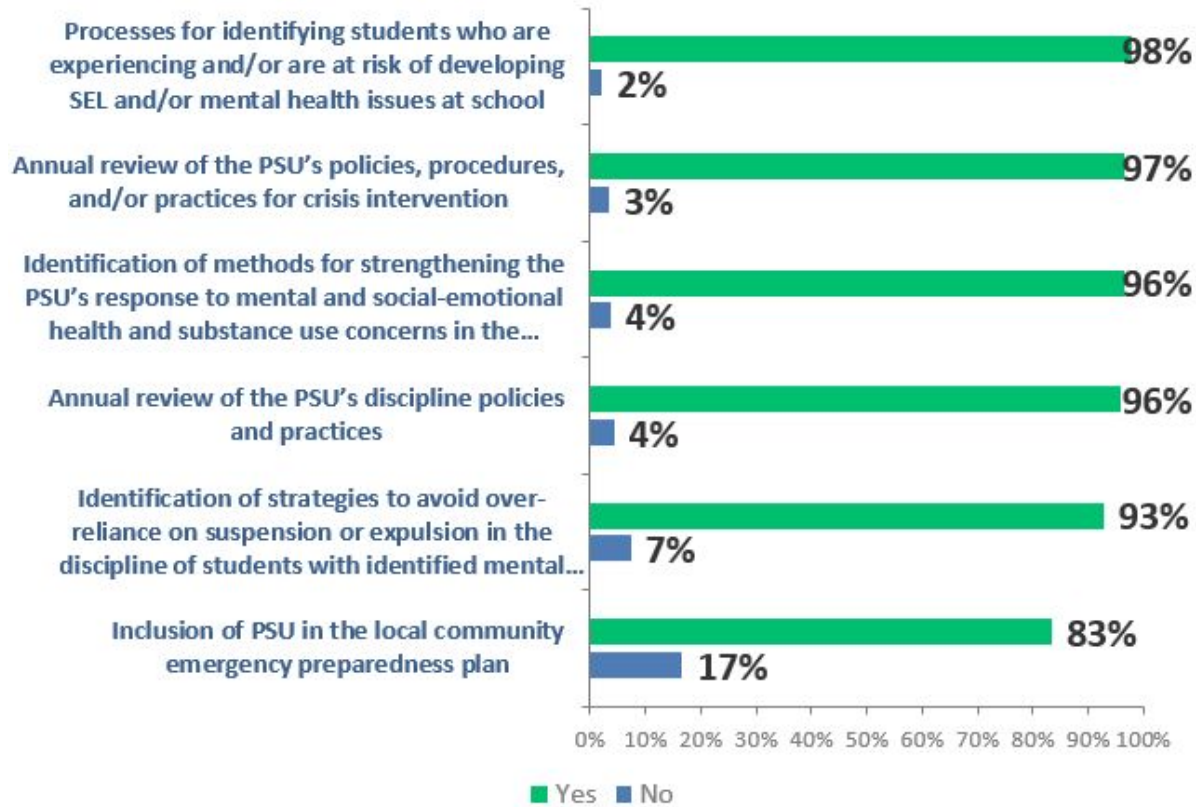
Training	Year 1 Reporting Not Addressed	Year 2 Reporting Not Addressed	Difference
Youth Mental Health	9	14	+5
Suicide Prevention	8	10	+2
Substance Abuse	38	36	-2
Teenage Dating Violence	56	53	-3
Child Sexual Abuse Prevention	21	24	+3
Sex Trafficking Prevention	22	23	+1
Adult Social Emotional Learning/Mental Wellness (Not Legislated)	46	51	+5

**Number of PSUs reflected in the chart.*

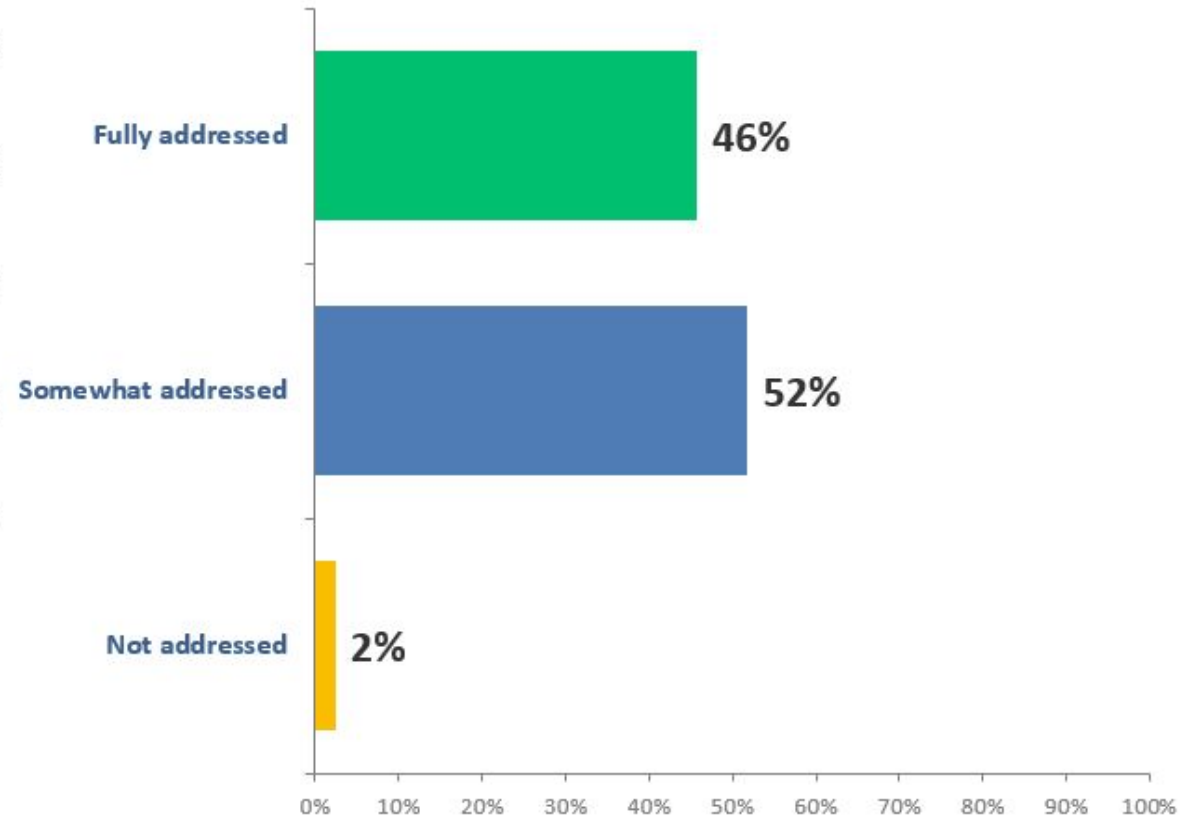


Early Interventions

Does your plan address early intervention for mental and social-emotional health, including:

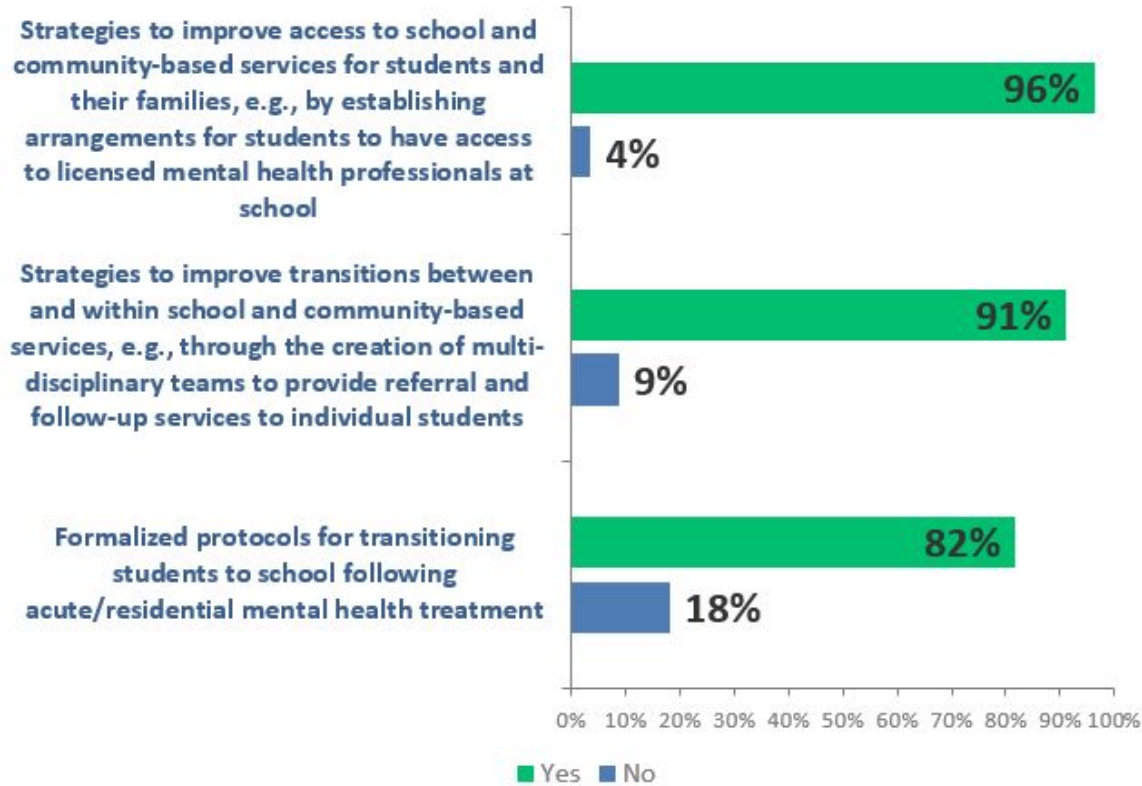


To what extent did your PSU address early intervention for mental and social-emotional health in the 2021-2022 school year?

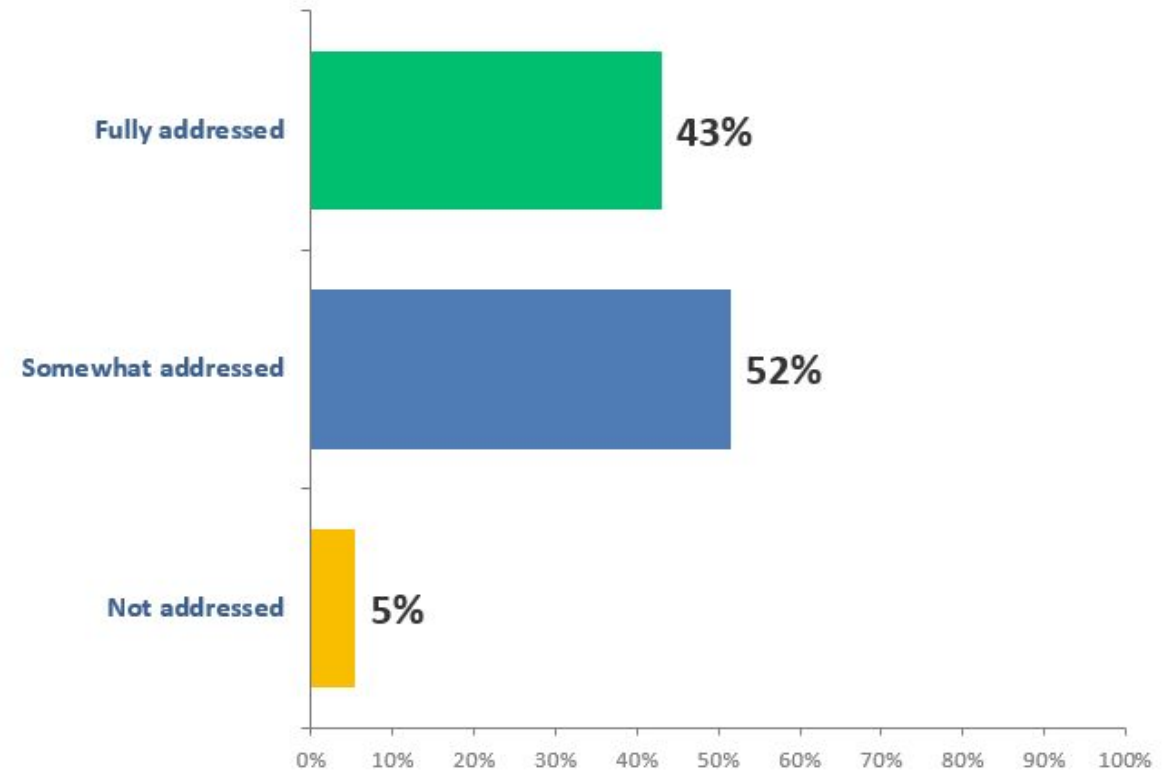


Transitions and Re-entry

Does your plan address how students in need will access and transition within and between school and community-based mental health and substance use services, including:

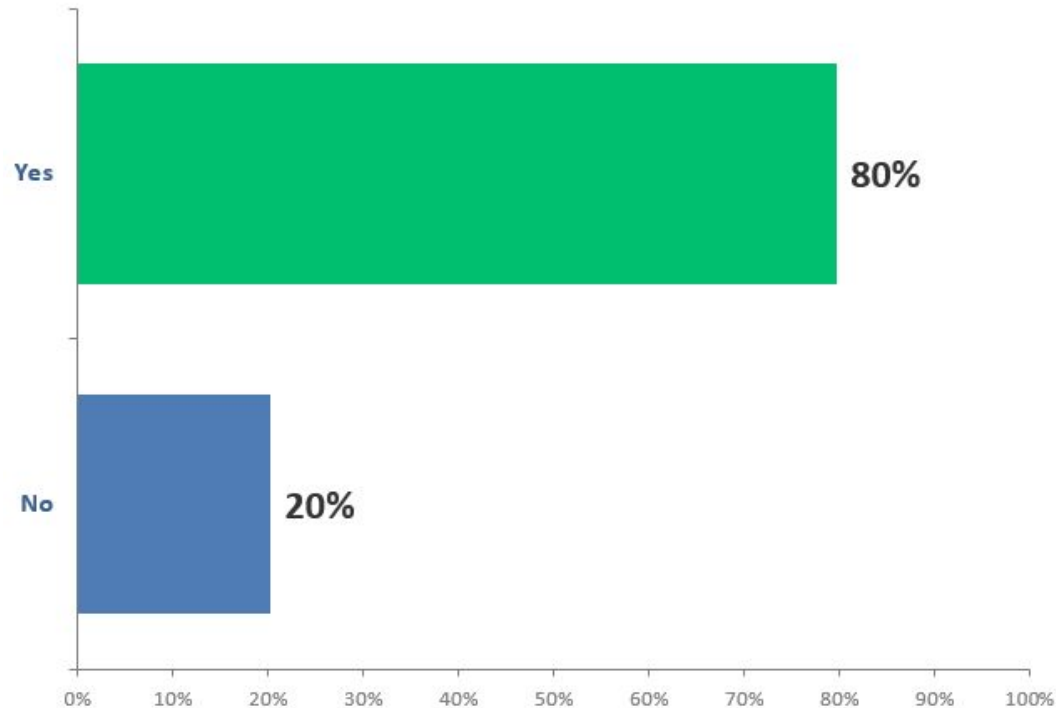


To what extent did your PSU address how students in need will access and transition within and between school and community-based mental health and substance use services in the 2021-2022 school year?

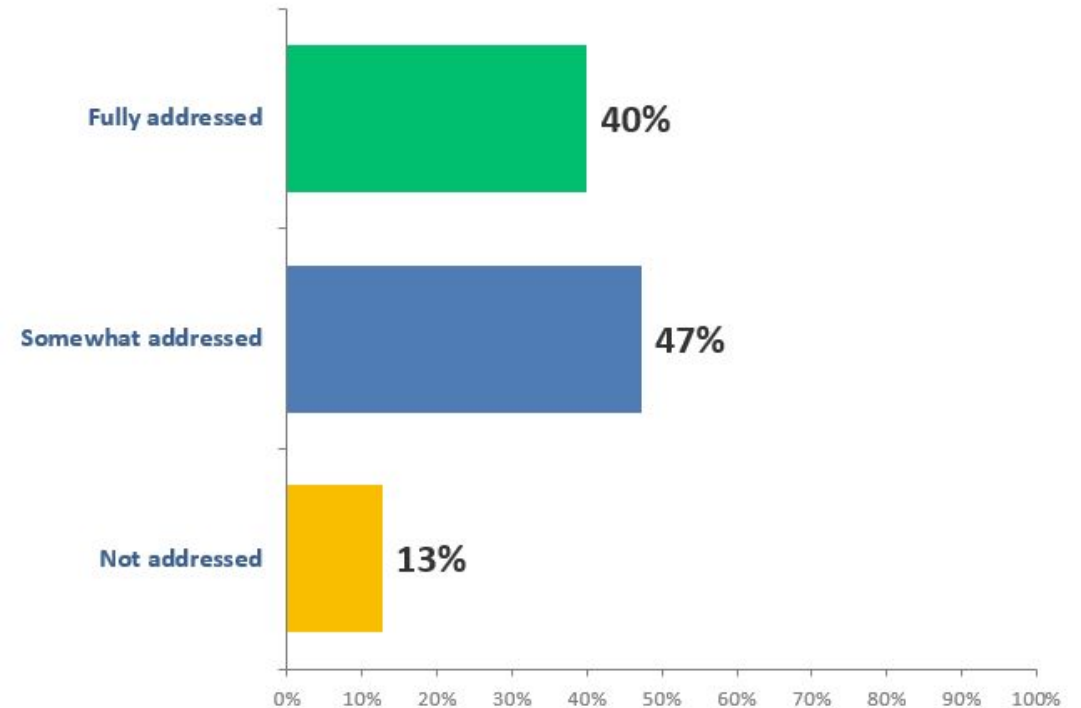


Staffing Ratios

Does your plan address improving staffing ratios for licensed specialized instructional support personnel such as school counselors, school nurses, school psychologists, school social workers, and school occupational therapists?



To what extent did your PSU address improving staffing ratios for licensed specialized instructional support personnel such as counselors, school nurses, school psychologists, school social workers, and school occupational therapists in the 2021-2022 school year?



Staffing Ratios Trends

These personnel include school counselors, school nurses, school psychologists, school social workers, and school occupational therapists.

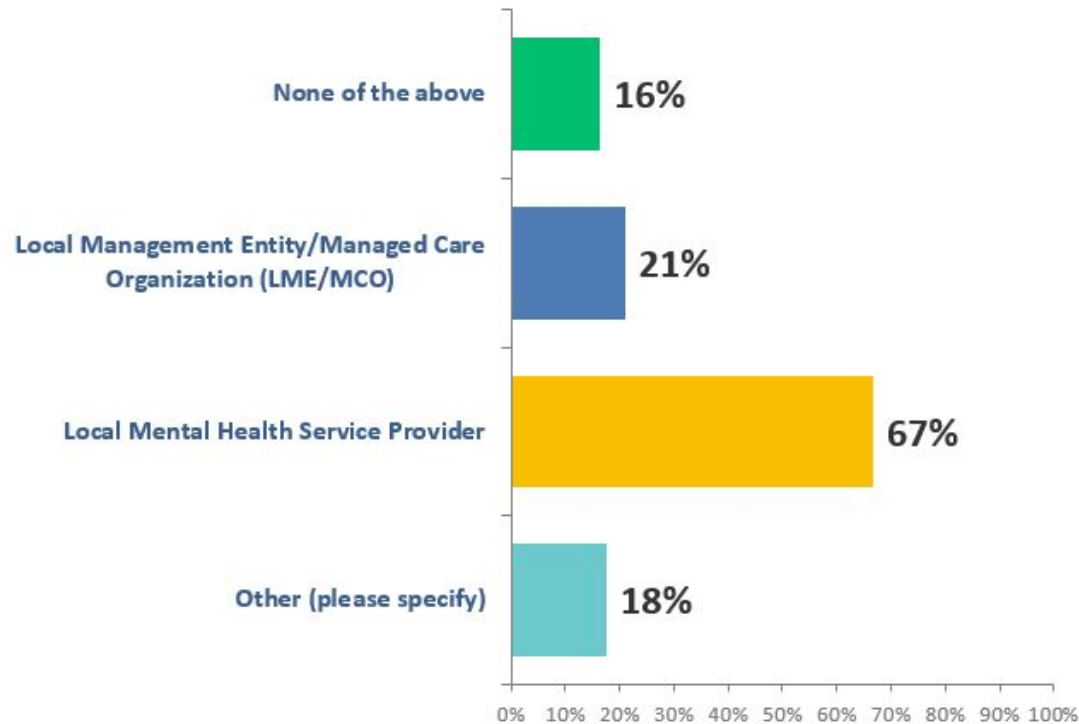
Addressed in Plan	Year 1 (2021)	Year 2 (2022)	Difference
Yes	240	263	+23
No	79	67	-12

**Number of PSUs reflected in the chart.*

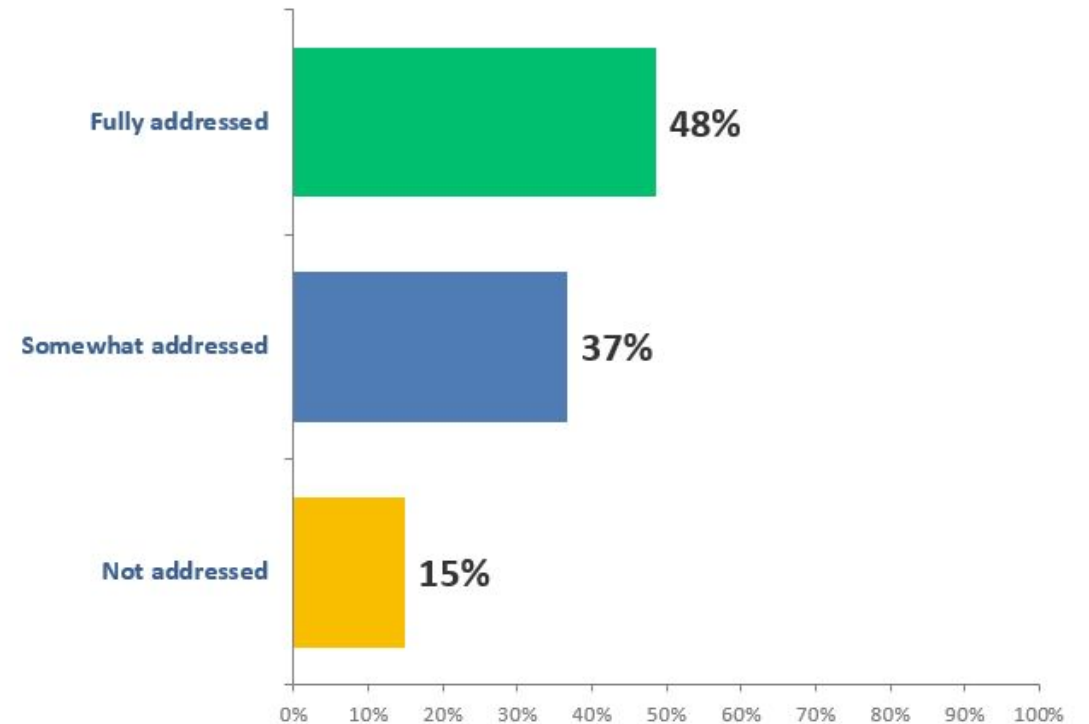


Memorandum of Understanding

With what mental health and substance use providers does your PSU have a Memorandum of Understanding (MOU) regarding respective roles and relationships on coordination of referral, treatment, and follow-up for individual students in need of services?



To what extent did your PSU address establishing/maintaining Memorandums of Understanding (MOUs) with mental health and substance use providers regarding respective roles and relationships on coordination of referral, treatment, and follow-up for individual students in need of services in the 2021-2022 school year?



MOU Trends

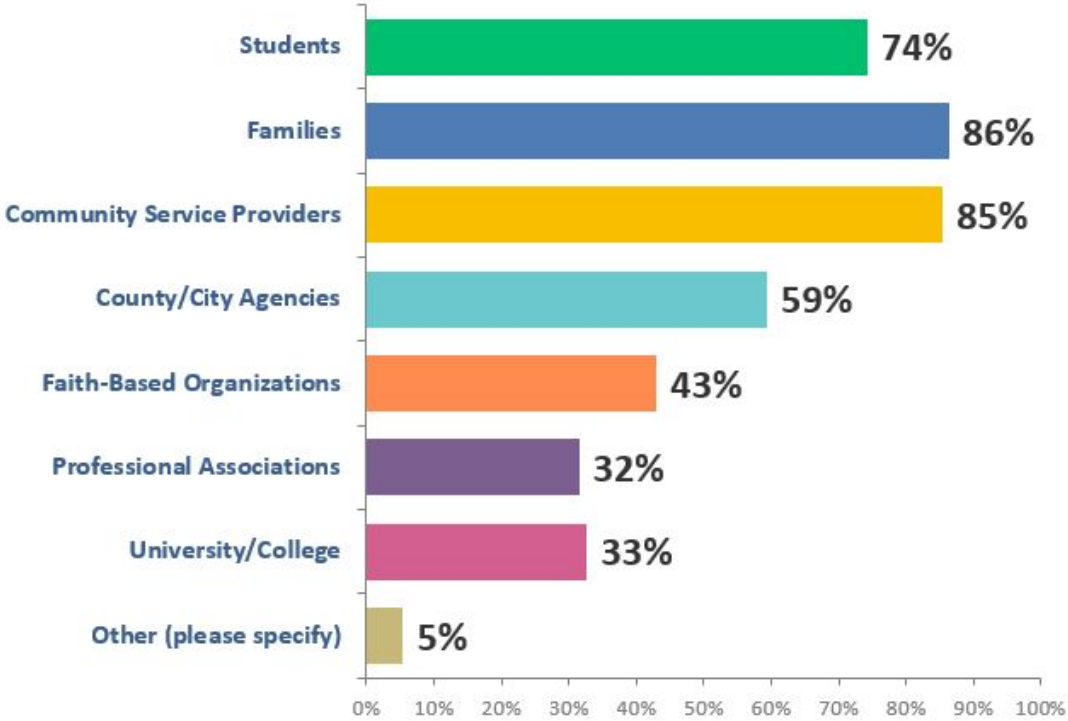
MOU In Place	Year 1 (2021)	Year 2 (2022)	Difference
None of the above	76	54	-22
Local Management Entity/Managed Care Organization (LME/MCO)	72	69	-3
Local Mental Health Service Provider	180	220	+40
Other	48	58	+10

**Number of PSUs reflected in the chart.*

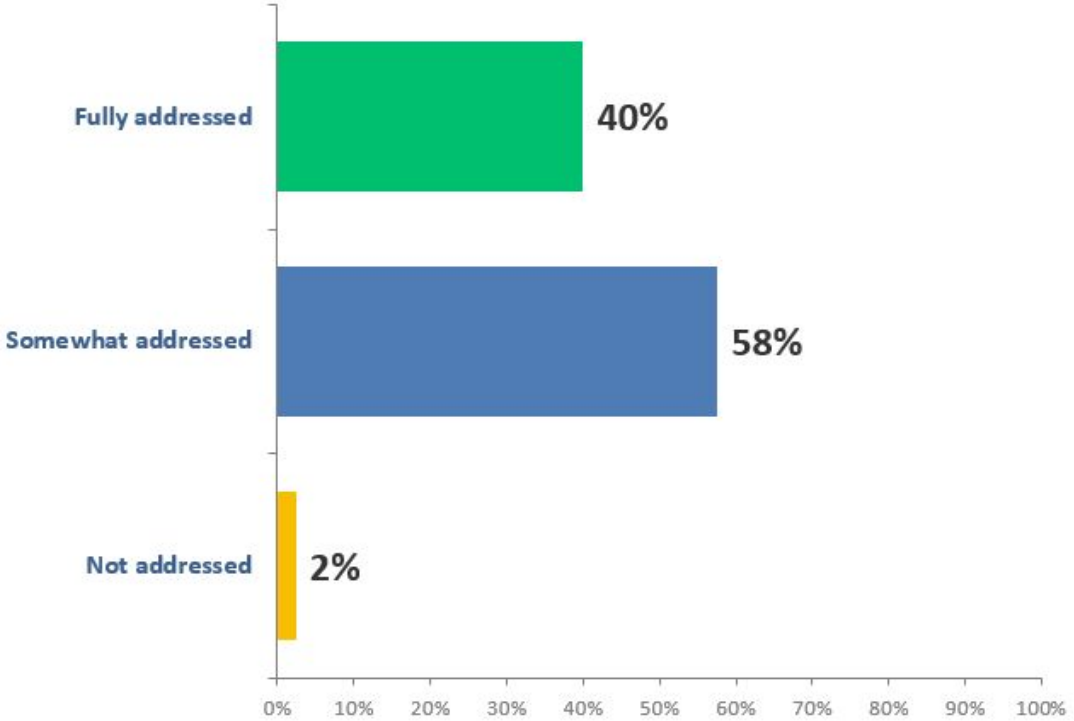


Stakeholder Engagement

In addition to school personnel, which of the following stakeholders are engaged in your goal of building school, family, and community partnerships to create and sustain coordinated mental and social-emotional health and substance use supports and services for students.



To what extent did your PSU address engaging stakeholders in your goal of building school, family, and community partnerships to create and sustain coordinated mental and social-emotional health and substance use supports and services for students in the 2021-2022 school year?



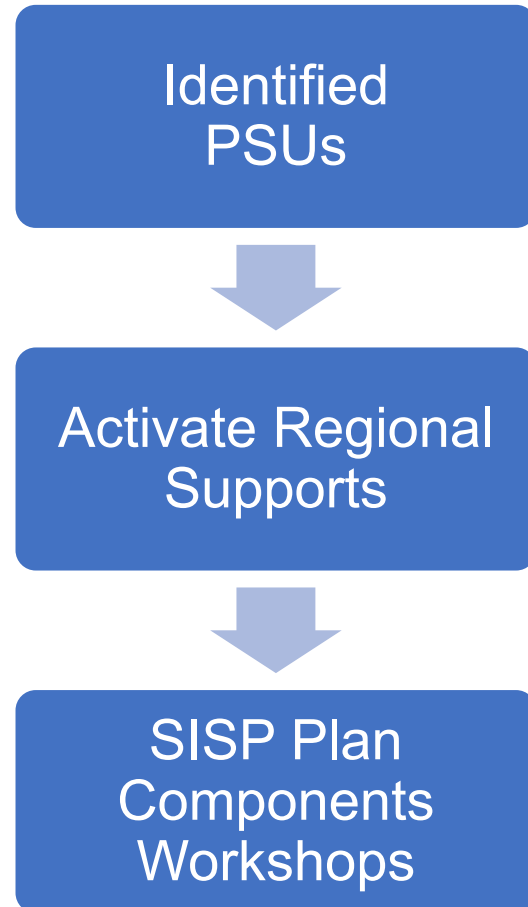
Stakeholder Engagement Trends

Stakeholders Engaged	Year 1 (2021)	Year 2 (2022)	Difference
Students	238	245	+7
Families	275	285	+10
Community Service Providers	276	282	+6
County/City Agencies	177	196	+19
Faith-Based Organizations	137	142	+5
Professional Associations	87	104	+17
University/College	88	108	+20
Other	21	18	-3

**Number of PSUs reflected in the chart.*



Technical Assistance and Supports



Follow-Up Determinants

- No plan
- Missing components
- No action items
- No suicide risk referral protocol
- Training compliance
- Request for help

Whole School Whole Community Whole Child



Healthy Children Learn Better

