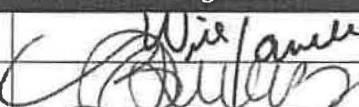
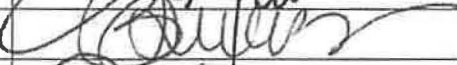
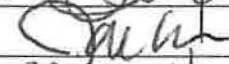
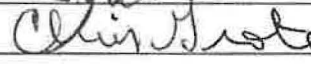
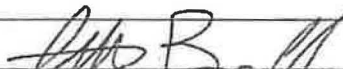


# Comprehensive School Safety Plan

**2022-23  
School Year**

**School:** Cache Creek High School  
**CDS Code:** 57727100000000  
**District:** Woodland Joint Unified School District  
**Address:** 14320 Second St./P.O. Box 388  
Yolo, CA 95697-0298  
**Date of Adoption:**

**Approved by:**

Name	Title	Signature	Date
William Jarrell	Principal		9.15.22
Lisa Sanchez	Office Coordinator		9.15.22
Jade Owen	Counselor		9-15-22
Chris Grote	Intervention Specialist		9-15-22
Maria Morales	Custodian		
Scott Borrelli	Teacher		9-15-22

## Table of Contents

Important Emergency Numbers .....	4
Senate Bill 187: Comprehensive School Safety Plan Purpose .....	5
Safety Plan Vision .....	5
Components of the Comprehensive School Safety Plan (EC 32281) .....	6
(A) Child Abuse Reporting Procedures (EC 35294.2 [a] [2]; PC 11166) .....	7
(B) Disaster Procedures (EC 35295-35297; GC 8607 and 3100) .....	7
(C) School Suspension, Expulsion and Mandatory Expulsion Guidelines .....	8
(D) Procedures to Notify Teachers of Student Safety Concerns (EC 49079) .....	9
(E) Sexual Harassment Policies (EC 212.6 [b]) .....	9
(F) School-wide Dress Code Relating to Gang-Related Apparel (EC 35183) .....	10
(G) Procedure for Safe Ingress and Egress of Pupils, Parents, and Staff to and from School (EC 35294.2) .....	11
(H) A Safe and Orderly School Environment Conducive to Learning (EC 35294.2) .....	11
(I) School Discipline Rules and Consequences (EC 35291 and EC 35291.5) .....	15
(J) Hate Crime Reporting Procedures and Policies .....	20
Safety Plan Review, Evaluation and Amendment Procedures .....	21
Safety Plan Appendices .....	22
Safety Plan Review, Evaluation and Amendment Procedures .....	22
Cache Creek High School Incident Command System .....	23
Incident Command Team Responsibilities .....	24
Emergency Response Guidelines .....	25
Types of Emergencies & Specific Procedures .....	27
Classroom Lockdown Procedures .....	27
Accidents/Medical Emergencies .....	28
Weapons On School Property .....	29
Intruder/Trespassing .....	30
Unidentified Person on School Site .....	31
Death On School Site (Natural Causes, Accidental Or Suicide) .....	32
Active Shooter On School Site .....	33

Unauthorized Removal/Missing/Abducted Person(s).....34  
Armed Subject, Armed Robbery Or Hostage .....35  
Earthquake .....36  
Severe Weather/Flooding .....37  
Fire .....38  
Bomb Threat Procedures (Device Located).....39  
BOMB THREAT CHECKLIST (IF RECEIVED VIA PHONE).....40  
Evacuation Procedures - Utility Emergency .....42  
Utility Emergency .....43  
Gas Leaks.....44

## Important Emergency Numbers

### FOR ANY EMERGENCY

#### Community Numbers

Police Department ( <i>non-emergency</i> )	530-666-2411
Yolo County Sheriff ( <i>non-emergency</i> )	530-666-6612 530-666-8282
Poison Control	1-800-222-1222
Child Protective Services	530-669-2345
Fire Department ( <i>non-emergency</i> )	530-661-5860

#### District Numbers

Superintendent's Office	530-406-3202
Business Services	530-406-3220
Human Resources	530-406-3208
Ed Services	530-406-3241
Student Services	530-406-3178
M&O	530-406-5930
Food Services	530-406-5956
Technology	530-406-3100

### 9-911

#### School Numbers

##### Elementary Schools

Preschool	530-406-5951
Beamer Elementary	530-662-1769
Dingle Elementary	530-662-7084
Freeman Elementary	530-662-1758
Gibson Elementary	530-662-3944
Maxwell Elementary	530-662-1784
Plainfield Elementary	530-662-9301
Sci-Tech Charter at KL	530-735-6435
Spring Lake Elementary	530-406-5899
Tafoya Elementary	530-666-4324
Whitehead Elementary	530-662-2824
Woodland Prairie	530-662-2898
Zamora Elementary	530-666-3641
K-8 Home Study	530-661-2568

##### Middle Schools

Douglass Middle School	530-666-2191
Lee Middle School	530-662-0251

##### High Schools

Pioneer High School	530-406-1148
Woodland High School	530-662-4678
Cache Creek High School	530-662-4331
Independent Learning Center	530-666-0264

##### Alternative Educational Settings

Community Day School	530-406-3178
Adult Education	530-662-0798

## **Senate Bill 187: Comprehensive School Safety Plan Purpose**

The California Education Code (sections 32280-32288) outlines the requirements of all schools operating any kindergarten and any grades 1 to 12, inclusive, to write and develop a school safety plan relevant to the needs and resources of that particular school.

In 2004, the Legislature and Governor recast and renumbered the Comprehensive School Safety Plan provisions in SB 719 and AB 115. It is the intent of the Legislature in enacting the provisions to support California public schools as they develop their mandated comprehensive safety plans that are the result of a systematic planning process, that include strategies aimed at the prevention of, and education about, potential incidents involving crime and violence on school campuses.

The historical requirement of the Comprehensive School Safety Plan was presented in Senate Bill 187, which was approved by the Governor and chaptered in 1997. This legislation contained a sunset clause that stated that this legislation would remain in effect only until January 1, 2000. Senate Bill 334 was approved and chaptered in 1999 and perpetuated this legislation under the requirement of the initial legislation.

Comprehensive School Safety Plans are required under SB 719 & AB 115 and contains the following elements:

Assessment of school crime committed on school campuses and at school-related functions

- Child abuse reporting procedures
- Disaster procedures
- Suspension and expulsion policies
- Procedures to notify teachers of dangerous pupils
- Discrimination and harassment policies
- School wide dress code policies
- Procedures for safe ingress and egress
- Policies enacted to maintain a safe and orderly environment
- Rules and procedures on school discipline
- Hate crime reporting procedures

The Comprehensive School Safety Plan will be reviewed and updated by March 1st every year. In July of every year, the school will report on the status of its school safety plan including a description of its key elements in the annual school accountability report card.

A copy of the Comprehensive School Safety Plan is available for review at WJUSD Superintendent's Office.

### **Safety Plan Vision**

Maintaining a safe environment is critical to success and is everyone's responsibility. This means school and district officials work towards ensuring that grounds and buildings are safe. We believe that our students have a right to learn in a safe environment.

The primary purpose of the safety plan is to help school officials protect the lives and well-being of students and staff through emergency preparedness planning to ensure prompt and appropriate response of trained school personnel when a school crisis occurs. Rational and effective thinking on the part of each staff person is key to that goal. The safety plan is intended to help each site maximize safety by reducing panic and facilitating effective action during the CRITICAL FIRST TEN MINUTES of a crisis.

School officials must recognize that emergencies are fluid events and the emergency procedures outlined may not fit every situation. Administrators and staff must remain flexible and be prepared to promptly adapt their actions as necessary.

The most critical element in any crisis is to STAY CALM since students will mirror the attitude/actions of the adults around them. The ability to manage fear and remain calm in the midst of chaos is the most effective tool for minimizing the impact of any crisis.

## **Components of the Comprehensive School Safety Plan (EC 32281)**

### **Cache Creek High School Safety Committee**

Will Jarrell, Lisa Sanchez, Jade Owen, Chris Grote, Maria Morales, and Scott Borrelli

### **Assessment of School Safety**

There are gaps in the physical safety of the campus. The major concern is the slow response time by law enforcement should an active shooter enter campus. Planning for the first 10 minutes is part of staff meetings 3 times each year. On a quarterly and yearly basis, and more frequently as needed, the school collects data on attendance, behavior, and academic production. Additionally, the school uses the CA Healthy Kids as an external measure of school climate and culture. Data indicates that the school continues to be a positive atmosphere where students feel safe. The last 7 years have seen significant drops in referrals and suspensions, and a very low incidence of violence on campus. This is especially important to cultivate given the external climate in Woodland has significant gang activity for many of our students. External signs of gang affiliations on campus are negligible, with students largely in compliance with the no red/no blue policy.

### **Summary of Student Input/Participation**

### **Strategies and Programs to Provide and Maintain a High Level of Safety (EC 32281(a)1, items A-J)**

Cache Creek High School and the Woodland Joint Unified School District are committed to providing a safe environment for students, staff and visitors. Several strategies will be utilized to maintain a high level of school safety. Strategies include, but are not limited to:

- Four "Safety Days" when the school intentionally focuses on lockdown, earthquake, and fire preparedness
- Implementation of Advisory where teachers build strong relationships with students.
- Implementation of MTSS and providing both academic and socio-emotional tiered interventions
- Digital Citizenship courses
- WJUSD process for support students with socio-emotional needs
- Consultation with local public safety agencies (Woodland Police Department/Woodland Fire Department)
- Consultation with risk management specialists (Cal OSHA)
- Continuing education and training of school staff (ALICE, CPR, Bullying Prevention & Intervention)
- Inspections and evaluations of school facilities (Cal-OSHA WJUSD IIPP Evaluation Process/Protocol)
- Evaluation of safety-related policies and procedures
- Annual review and revision of Comprehensive School Safety Plan (Yearly review of plan done by school site safety/SSC teams)

Such strategies will ensure that a safe and orderly environment, conducive to learning is maintained. Such strategies will also ensure compliance with existing laws related to school safety. This manual outlines several elements critical to maintaining a safe school environment.

Survey results from the August 2022 Student Survey: n=110, 11th grade 45.5%, 12th grade 54.5%, Male 58.2%, Female 41.8%, H/L 82.7%, W 8.2%, More than 1 race 5.5%, AA 1.8%

Transportation - 61.8% ride the bus, 17.3% drive themselves, 16.1% get a ride from family/friend

How many credits per quarter are needed to stay on track for graduation?

5 4.5%

9 8.2%

6 5.5%

57 51.8%

33 30.0%

Are cell phones permitted in class?

Yes 4 3.6%

No 106 96.4%

Have you seen the school's evacuation plan?

Yes 101 91.8%

No 9 8.2%

Do you think a single point of entry makes the school safer?

Yes 86 78.2%

No 24 21.8%

Do you think fencing around the school makes the school safer?

Yes 89 80.9%

No 21 19.1%

Does having teacher doors locked add to your feeling of safety at CCHS?

Yes 96 87.3%

No 14 12.7%

Do you know that students must bring their laptops to school every day?

Yes 109 99.1%

No 1 0.9%

On September 13, 2022, the school conducted a school-wide student advisory council with 99 students participating. These participants were asked the following question: "What can WJUSD do to make sure you feel safe when you come to school?" Teachers were asked to use Jamboard to synthesize the classroom discussions. Responses ranged from "keep doors locked" to having "guard dogs" and "armed security." The majority of responses were to have more campus security monitors/guards and to keep doors locked. Fences and locked gates were also a common response.

#### **(A) Child Abuse Reporting Procedures (EC 35294.2 [a] [2]; PC 11166)**

School district employees are mandated reporters and shall make a report whenever, in his/her professional capacity or within the scope of his/her employment, he/she has knowledge of or observes a child whom the mandated reporter knows or reasonably suspects has been the victim of child abuse or neglect. (Penal Code 11166)

Immediately or as soon as practicable after knowing or observing suspected child abuse or neglect, a mandated reporter shall make an initial report by telephone to Yolo County Child Welfare Services (530) 669-2355 or Woodland Police Department (530) 666-2411. Within 36 hours of knowing or observing the information concerning the incident, the mandated reporter shall then prepare and either send, fax, or electronically submit to Yolo County Child Welfare Services a written follow-up report, which includes a completed Suspected Child Abuse Report form (SS 8572). (Penal Code 11166, 11168)

For complete policies and procedures see Board Policy and Administrative Regulation BP 5141.4 Child Abuse Reporting Procedures available on the District Website under Board of Education and at <http://www.gamutonline.net/district/woodland>.

#### **(B) Disaster Procedures (EC 35295-35297; GC 8607 and 3100)**

### **Disaster Plan - Classroom Emergency Protocols**

The following BP and ARs give information on our disaster procedures. In addition, each site's crisis team has an Emergency Response binder which contains the comprehensive safety plan as well as our emergency policies and procedures. Each working space that has students or staff has a red emergency folder which contains lockdown, shelter in place, and evacuation procedures, emergency contact numbers, basic first aid information, class roster, and site evacuation maps. Drills are done with staff and students at least twice a year to practice the emergency procedures.

BP and AR 0450 Comprehensive Safety Plan

BP and AR 3516 Emergencies and Disaster Preparedness Plan

AR 3516.3 Earthquake Emergency Procedure System

BP and AR 4158 Employee Security

### **Public Agency Use of School Buildings for Emergency Shelters**

The school site is available to governmental agencies such as law enforcement and fire as directed and needed.

### **(C) School Suspension, Expulsion and Mandatory Expulsion Guidelines**

A student may be suspended or expelled for any of the causes listed in state Education Code 48900 through 48915 and Board Policies. A summary of the causes is listed in AR 5144.1

A student may be suspended or expelled for acts related to school activity or attendance that occur at any time, including, but not limited to (1) while the student is on school grounds; (2) while the student is going to or coming from school; (3) during the lunch period, whether on campus or off campus; or (4) during or while a student is going to or coming from a school-sponsored activity.

Suspension must be preceded by an informal conference with the student, unless the principal or designee believes an emergency exists and orders the student to immediately leave the school because the student's presence is a danger to persons or property, or is a threat to the academic program. In such cases the conference will be held as soon as practical, but within two (2) school days.

At the informal conference, the decision to suspend will be explained by the principal or the principal's designee. The conference will include the following steps: (1) The student will be informed of the reason for the disciplinary action and the evidence against them; (2) The student will be provided an opportunity to present their written and/or verbal statement and evidence in their defense. If the student needs assistance with a written statement, they will be assisted. Those statements will be attached to the school file copy of this form.

If not delivered at the time of the suspension, the Notice of Suspension shall be delivered or mailed to the parent/legal guardian within one (1) school day of the beginning of the suspension. State law (Education Code 48911) makes it the student's and parent/legal guardian's duty to respond to school official's request to attend a conference concerning his/her child's behavior. The conference may be held at the time of suspension or at re-entry.

The parent/legal guardians were given the Woodland Joint Unified School District Standards of Behavior at the start of the school year. Upon request, a school site can supply the parent/guardian/student with another copy of the document as well as any applicable policies or regulations.

**Appeal of Suspension:** The student/parent(s) may appeal a suspension. Parents shall put their request for appeal in writing, clearly stating the reason for the appeal, which shall be one or both of the following contentions: 1) Procedural due process was not followed or 2) The reason to suspend was not in compliance with District policies and procedures and/or law. Unless there is clear evidence that a procedural or legal violation and/or District procedures were violated, the school administration's decision to suspend will be upheld.

If someone other than the principal has suspended the student, the principal receives the appeal. Upon receipt of the written request, the principal shall delay the implementation of the suspension for one (1) day following the day of the request, if the appeal cannot be considered the day of the request. However, if the principal concludes that the student poses a danger to self or others or is a serious threat of disruption of the educational process, the principal shall not delay for one (1) day the implementation of the suspension. The principal will conduct fact finding in regards to the appeal and render a timely decision. Fact finding will include input from school administration and the person appealing the suspension. The decision of the Principal is final and, thus, ends the

appeal process.

If the principal is not available within 24 hours of the request for appeal or if the principal initiated the suspension, the parent should appeal directly to the Executive Director of Student Support or designee. The Executive Director of Student Support or designee will conduct the fact finding in regards to the appeal and render a decision in a timely manner. The decision of the Director or designee is final and, thus, ends the appeal process.

Additional information on the suspension and expulsion process can be found in: BP and AR 4158 Employee Security

BP 5119 Students Expelled from Other Districts

BP 5131 Conduct

BP and AR 5144 Discipline

BP and AR 5144.1 Suspension and Expulsion/Due Process

BP and AR 5144.2 Suspension and Expulsion/Due Process, students with disabilities

Available on website under Board of Education and at <http://www.gamutonline.net/district/woodl>

#### **(D) Procedures to Notify Teachers of Student Safety Concerns (EC 49079)**

The Principal or designee shall inform the teacher(s) of each student who has engaged in, or is reasonably suspected of, any act during the previous three school years which could constitute grounds for suspension or expulsion under Education Code 48900, with the exception of the possession or use of tobacco products, or Education Code 48900.2, 48900.3, 48900.4, or 48900.7. This information shall be based upon district records maintained in the ordinary course of business or records received from a law enforcement agency. (Education Code 49079)

Information received by teacher(s) shall be received in confidence for the limited purpose for which it was provided and shall not be further disseminated by the teacher. (Education Code 49079)

When a minor student has been found by a court of competent jurisdiction to have illegally used, sold or possessed a controlled substance or committed specified crimes involving serious acts of violence, the Police Department may provide written notification to the Superintendent or designee. (Welfare and Institutions Code 828.1)

When informed by the court that a minor student has been found by a court to have committed any felony or any misdemeanor involving curfew, gambling, alcohol, drugs, tobacco products, carrying of weapons, a sex offense listed in Penal Code 290, assault or battery, larceny, vandalism, or graffiti, the Superintendent or designee shall so inform the school principal. (Welfare and Institution Code 827)

The principal shall disseminate this information to any counselor who directly supervises or reports on the student's behavior or progress. The principal also may inform any teacher or administrator he/she thinks may need the information so as to work with the student appropriately, avoid being needlessly vulnerable, or protect others from vulnerability. (Welfare and Institutions Code 827)

Any court-initiated information that a teacher, counselor or administrator receives shall be kept confidential and used only to rehabilitate the student and protect other students and staff. The information shall be further disseminated only when communication with the student, parent/guardian, law enforcement staff, and probation officer is necessary to rehabilitate the student or to protect students and staff. (Welfare and Institutions Code 827)

Any confidential file of court-initiated information shall be kept until the student becomes 18, graduates from high school, or is released from juvenile court jurisdiction, whichever occurs first, and shall then be destroyed. (Welfare and Institutions Code 827)

#### **(E) Sexual Harassment Policies (EC 212.6 [b])**

The Governing Board is committed to maintaining a safe school environment that is free from harassment and discrimination. The Board prohibits sexual harassment or sexual violence of students at school or at school-sponsored or school-related activities. The Board also prohibits retaliatory behavior or action against any person who reports, files a complaint or testifies about, or otherwise supports a complainant or respondent in alleging sexual harassment.

The district strongly encourages any student who feels that he/she is being or has been sexually harassed on school grounds or at a school-sponsored or school-related activity by another student or an adult to immediately contact his/her teacher, the principal, or

any other available school employee. Any employee who receives a report or observes an incident of sexual harassment shall notify the principal or a district compliance officer.

Complaints regarding sexual harassment shall be investigated and resolved in accordance with law and district procedures specified in AR 1312.3- Uniform Complaint Procedures. Principals are responsible for notifying students and parents/guardians that complaints of sexual harassment can be filed under AR 1312.3 and where to obtain a copy of the procedures.

The Superintendent or designee shall take appropriate actions to reinforce the district's sexual harassment policy and to ensure that any complaints regarding sexual harassment are immediately investigated in accordance with administrative regulation. When the Superintendent or designee has determined that harassment has occurred, he/she shall take prompt, appropriate action to end the harassment and to address its effects on the victim.

The Superintendent or designee shall ensure that all district students receive age-appropriate instruction and information on sexual harassment. Such instruction and information shall include:

1. What acts and behavior constitute sexual harassment, including the fact that sexual harassment could occur between people of the same sex and could involve sexual violence
2. A clear message that students do not have to endure sexual harassment under any circumstance
3. Encouragement to report observed incidents of sexual harassment even where the alleged victim has not complained
4. A clear message that student safety is the district's primary concern, and that any separate rule violation involving an alleged victim or any other person reporting a sexual harassment incident will be addressed separately and will not affect the manner in which the sexual harassment complaint will be received, investigated, or resolved
5. Information about the district's procedure for investigating complaints and the person(s) to whom a report of sexual harassment should be made
6. Information about the rights of students and parents/guardians to file a civil or criminal complaint, as applicable

Any student who engages in sexual harassment at school or at a school-sponsored or school-related activity is in violation of this policy and shall be subject to appropriate interventions and/or disciplinary action. For students in grades 4-12, disciplinary action may include suspension and/or expulsion, provided that, in imposing such discipline, the entire circumstances of the incident(s) shall be taken into account. Any student who engages in sexual violence at school or at a school-sponsored or school-related activity is in violation of this policy and shall be subject to appropriate interventions and/or disciplinary action, up to and including suspension and/or expulsion.

Any staff member found to have engaged in sexual harassment or sexual violence toward any student shall be subject to discipline up to and including dismissal in accordance with applicable policies, laws, and/or collective bargaining agreements.

The Superintendent or designee shall maintain a record of all reported cases of sexual harassment to enable the district to monitor, address, and prevent repetitive harassing behavior in district schools.

For additional information see:

BP and AR 1312.1 Complaints Concerning District Employees  
BP and AR 1312.3 Uniform Complaint Procedures  
BP and AR 5145.7 Sexual Harassment

See WJUSD website under Board of Education and at <http://www.gamutonline.net/district/woodland>

#### **(F) School-wide Dress Code Relating to Gang-Related Apparel (EC 35183)**

WJUSD Dress Code Policy

Our goals are to promote school safety and enhance the learning environment, while at the same time discourage distractions that inhibit learning. If a student's dress is not in accordance with this policy, any staff member may ask the student to make an appropriate correction.

1. Student dress shall be safe and appropriate, and not disturb the educational environment. (For example: collars or bracelets with

spikes and clothing with revealing holes and cutouts are inappropriate for school wear.)

2. Clothing may not glorify, advertise, or reference drugs, alcohol, tobacco, tobacco products, violence, vulgarity, sexual behavior, or obscenities in any way, shape or form.
3. Footwear must be worn at all times. Footwear must be safe, practical, and not limit student participation in school activities.
4. Clothing, backpacks, tattoos, and other adornment may not demonstrate or suggest gang-related symbols, or colors. No bandanas are allowed at school.
5. Undergarments/underwear must be covered at all times.
6. Shirts and blouses must cover the stomach and chest. Shirts and pants/skirts must be touching in both front and back, and shirts must not be see-through or strapless.
7. Clothing must cover buttocks completely whether standing, sitting, walking, or bending.

Generally, students who do not follow the dress code will be referred to the office to correct the issue. Corrective action may include changing into PE clothes, wearing at-shirt provided by the school or in certain circumstances being sent home to change. All corrective actions will be reported to parents/guardians.

For additional information, see BP and AR 5132 Dress and Grooming available on District website under Board of Education and at <http://www.gamutonline.net/district/woodland>

**(G) Procedure for Safe Ingress and Egress of Pupils, Parents, and Staff to and from School (EC 35294.2)**

School Staff will ensure safe ingress and egress to and from the school for pupils, parents, and school employees. Safe ingress and egress will be maintained by periodic reviews of the procedures for ingress and egress. The school will ensure that all passageways to and from school buildings, corridors within school buildings and emergency exits remain clear of all obstruction to allow flow of pedestrian traffic. The school will also ensure that potential obstructions and hazards are removed from such areas. To assist school staff in conducting evaluations, the school may utilize consultants to conduct periodic inspections of the school.

Any problems associated with safe ingress and egress will be addressed immediately.

**(H) A Safe and Orderly School Environment Conducive to Learning (EC 35294.2)**

**Component:**

Safe Physical Environment

**Element:**

Creating a physical environment that ensures school-wide safety.

**Opportunity for Improvement:**

Update the procedures and address physical environmental needs to ensure a safe school environment.

Objectives	Action Steps	Resources	Lead Person	Evaluation
Maintain a current Comprehensive School Safety Plan to ensure school-wide safety.	Develop and update Safety Plans	Current School Safety Plan Director of Student Services	Director of Student Services	Governing Board Review & Approve Safety Plans during the 2022-2023 school year (by October 1).
Provide ALICE Training to all school sites, district departments and central office staff.	ALICE Training by WPD and WJUSD Representative	Current School Safety Plan Director of Student Services	Director of Student Services	Individual School Site Sign-Sheets

Objectives	Action Steps	Resources	Lead Person	Evaluation
Ensure student safety by practicing emergency drills with students and staff on regular basis.	Conduct emergency drills: Fire, Lock Down, Earthquake Drills	District Safety Team WPD Site Level Safety Team	Director of Student Services School Site Administrator(s) School Site Emergency Teams	2022-2023 Emergency Drill Documentation
Provide Prevention & Intervention curriculum on Tobacco and Vaping.	7-12 Grade Tobacco/Vaping Prevention & Intervention	TUPE Grant	Director of Student Services	District Level Year End Reports
Provide Staff Development for Roles/Responsibilities during site emergency.	Develop Roles and Responsibilities, Tasks Provide Calendar of Training Dates	Time during Staff Meetings	Site Administrator(s) Director of Student Services	CSSP Plan Incident Command Structure District/Site Emergency Procedures
Update and maintain surveillance, bell, PA and Fire Alarm Systems.	Test and maintain systems at regular intervals	Maintenance & Operations Department Technology Department	Maintenance & Operations Department Technology Department	2022-2023 Quarterly Review
Establish COVID Safety Protocols.	Implement current COVID Safety Protocols as directed through the Yolo County's Health Department	COVID District and Site Safety Committee	District COVID-19 Planning Team (Human Resources and Student Services))	Worksite Specific COVID-19 Prevention Plan
Brief all students on the school's evacuation plan	Put slides in start of school slide deck	Technology for presentation	Site Admin	Calendar with slide deck, student survey results
Safety Day X4	Run exercises for fire, evacuation, earthquake and lockdown drills	Include M&O to manage fire alarm	Site Admin/safety team	District accountability log
Staff Meeting Safety Topic	Safety topic is part of every staff meeting	Time for meeting	Site Admin/safety team/staff	Staff meeting agenda
Limited entry onto campus	Inform students and community that gate 1 is the sole entrance to the school	Funding for a gate at gate 1	Site Admin/District M&O	Gate installed

**Component:**

School Climate

**Element:**

Creating a School Climate to support student success

**Opportunity for Improvement:**

Improve student attendance and improve student options for success

Objectives	Action Steps	Resources	Lead Person	Evaluation
<p>Increase graduation rate through improving attendance and increasing tiered interventions, including multiple intentional contacts with seniors.</p>	<p>Monitor student attendance and identify students who have attendance concerns</p> <p>Administration will purchase attendance incentives to support increases in student attendance (T-shirts, sweatshirts, caps, earbuds, transportation for field trips, food, gift cards, etc.)</p> <p>EL Specialist will collect and track attendance data for students who are English Learners and make additional contact with parents/guardians.</p> <p>RTI Specialist tracks and monitors senior progress</p> <p>Advisory teachers tracks and monitors student progress</p>	<p>Funding for Incentives</p> <p>Funding for part-time attendance tech</p> <p>District Attendance Liaison</p> <p>RTI Specialist time to provide direct support to seniors</p> <p>UC Davis Tutors</p> <p>Advisory program</p>	<p>Principal</p> <p>Counselor</p> <p>School Staff</p> <p>RTI Specialist</p>	<p>Graduation data: % of students who are on track to graduate on time</p> <p>Avg # credits earned by quarter, semester, year</p> <p>Number of meetings counselor has with seniors</p> <p>% attendance</p> <p>Credits v. Attendance analysis</p>
<p>Improve career readiness through access to CTE and career readiness classes.</p>	<p>Implementation of culinary program</p> <p>Implementation of Softskills USA</p> <p>Equipment and materials for music class (eg. computer for production, instruments, speakers)</p> <p>Equipment and materials for Student Newspaper (eg. computer, printer, paper)</p> <p>Increase enrollment in Edgenuity Career Exploration classes.</p> <p>Field trips to community colleges in Woodland and Sacramento, and to</p>	<p>Funding for support of CTE Programs</p> <p>Release time to build CTE Programs</p> <p>Supplies for CTE Programs</p> <p>Funding for buses to career and community college visits</p>	<p>Principal</p> <p>Counselor</p> <p>All Staff</p>	<p># and % of students enrolled in a CTE course</p> <p># and % of students enrolled in a WCC course</p> <p>% completion of Edgenuity Career Explorations I.</p> <p>Percent of students taking a field trip to a career technical education institution or community college.</p> <p>Student plans survey</p>

Objectives	Action Steps	Resources	Lead Person	Evaluation
	other career oriented technical institutions and colleges.			
Improve School Climate through the continued implementation of Advisory with all students having the opportunity to participate at the TANA Center	<p>Minimum days to intentionally and explicitly model and train students on the school's culture and academic program.</p> <p>All school reads: "Street Life", "Two Badges", "Tales From La Vida", and "The Four Agreements."</p> <p>School Connect Lessons to develop social-emotional awareness.</p> <p>Word Generation Lessons to develop understanding of important issue in the current world.</p> <p>Goal setting and reflections</p>	<p>Funding to support implementation of advisory program</p> <p>Funding to purchase class sets of whole school book reads</p> <p>Funding for buses and subs to support TANA</p>	All Staff	<ul style="list-style-type: none"> <li># and % of students who earn 5+ credits in advisory</li> </ul> <p># and % of student who improve on NWEA.</p> <p># and % of students who attend TANA</p> <p># and % of students who attend the TANA Open House</p>

**Component:**  
School Climate

**Element:**  
Mutli-tiered Systems of Support

**Opportunity for Improvement:**  
Maintain positive relationships and support students in being present, positive, and productive

Objectives	Action Steps	Resources	Lead Person	Evaluation
Improve students' "Readiness to Learn" through the implementation of MTSS and CCHS's 4 behavior goals of being present, positive, productive and reflective.	CCHS will continue the implementation of Positive Behavior Interventions and Supports (PBIS) as part of MTSS. Incentives will be provided to students who exemplify the goals of being present,	<p>PBIS Incentives</p> <p>Conference Attendance</p> <p>Partner agencies</p>	<p>Principal</p> <p>Counselor</p> <p>Teachers</p> <p>All Staff</p> <p>RTI Specialist</p>	<p>Improvement with the Tiered Fidelity Inventory</p> <p>% improvement in attendance</p> <p>% reduction of truancy</p> <p>Avg # of credits earned by quarter, semester, year</p>

Objectives	Action Steps	Resources	Lead Person	Evaluation
	<p>positive and productive. Administration will purchase incentives (T-shirts, sweatshirts, caps, earbuds, transportation for field trips, food, gift cards, etc.).</p> <p>Monthly Tier II meetings will be held to review Readiness to Learn issues. Staff will identify students of concern and develop a tiered intervention plan to address each student's specific needs. Staff will also identify and commend students making improvements.</p> <p>Staff will further develop, implement, and measure expectations for student with regard to the 4 CCHS goals of being present, positive, productive, and reflective.</p> <p>Staff will continue to partner with external agencies like Brown Issues, TANA, Empower Yolo, Yolo County Office of Education to provide career support and enrichment activities.</p> <p>Reduce suspensions, referrals, absences and increase credits earned each quarter</p>			<p>Improvement in the avg # of credits earned by quarter, semester, year  # of referrals during a quarter, semester, and year  # of suspension during a quarter, semester, and year  % improvement in referrals and suspension quarter over quarter.  # of students with CommuniCare referrals  Improvements in attendance and credits earned after 1, 5, and 10 CommuniCare appointments  Student climate survey  Student plans survey  Disaggregated student survey results  Parent/family satisfaction from CHKS</p>

**(I) School Discipline Rules and Consequences (EC 35291 and EC 35291.5)**

**Cache Creek High School Student Conduct Code**

## Conduct Code Procedures

Behavior Data for 2021-2022:

Referrals to administration:

Year Number

15-16 1213

16-17 349

17-18 321

18-19 234

19-20 149

20-21 0

21-22 7

Suspensions(Target Areas): Class of: 16 17 18 19 20 21 22

48900(a)(1) Fighting 32 14 20 7 10 0 16

48900(k) Defiance of authority/Disruption of activity 41 23 20 12 7 0 5

48900.4 Engaged in intimidation 18 3 3 2 0 0 0

CCHS uses Positive Behavior and Interventions Support (PBIS) to define the climate and culture of our school. PBIS is a school-wide program that focuses on intentionally and explicitly training our students on CCHS expectations. We model expected behaviors and provide numerous incentives for supporting students with present, positive, productive, and reflective behaviors. However, should positive reinforcement fail to support a positive learning environment, the staff at CCHS have developed progressive behavioral interventions in an attempt to support positive behaviors.

### School Rules & Expectations

The most important role of progressive behavioral management at CCHS is to create a safe and comfortable learning environment that minimizes interruptions for all members of the school community. It is an expectation that all students are present, positive and productive every day. Communication between the home and school concerning discipline matters and academic progress is paramount in creating a safe environment conducive to learning.

The student handbook delineates our positive approach to student behaviors, however, students who exhibit inappropriate behavior are given consequences increasing in severity, which include conferences, referral to the Student Support Center (SSC), In-School Suspension (ISS), home suspension ranging from one to five days, and, if necessary, expulsion from the district. These consequences are based California Education Code, WJUSD Student Discipline Code, the CCHS student handbook, and on the severity or chronic nature of the offending behavior.

It should be noted that, although our discipline policy affords a framework for dealing with inappropriate student behavior in a comprehensive and consistent manner, each disciplinary issue will be reviewed within the context of its unique circumstances and the educational needs of the student. Alternative means of correction are a priority. CCHS focuses on students learning to make good decisions and become a successful in school.

### Teacher's Role in Discipline

Teachers will follow the progressive behavioral interventions process:

- Step 1: Discuss behavior with student, model appropriate behavior
- Step 2: Model appropriate behavior
- Step 3: Model appropriate behavior, contact family member
- Step 4: Referral to the Student Support Center

If, in the opinion of the classroom teacher, a student's behavior warrants immediate removal from the classroom, the student may be suspended from class and sent directly to the Student Support Center or administration. Teachers have the obligation, right, and need to teach their students and students must have the opportunity, right and need to learn from their teachers. A teacher may suspend any student from his/her class for the remainder of their class and for their class the following day for classroom disruption and/or willful defiance and/or repeatedly refusing to follow instructions. (Education Code 48910; Board Policy 5144.1)

#### Student Support Center (SSC)

A teacher may suspend a student from his/her class for unacceptable behavior with the following conditions:

- A teacher may refer a student to the Student Support Center for maximum of two days in a row.
- The student who is suspended from class is to report immediately to Student Support Center
- Any student who receives two referrals in one day will be assigned to the Student Support Center for one day of In-School Suspension (ISS) or receive a home suspension (1-5 days) depending on the chronic and pervasive nature of an individual student's behavior.
- Any student who receives three referrals in one week will be assigned to the Student Support Center for one day of In-School Suspension (ISS) or receive a home suspension (1-5 days) depending on the chronic and pervasive nature of an individual student's behavior.
- Failure to report directly to the SSC will result in a full day of In-school or home suspension.

CCHS culture is based on restorative practices which encourage students to reflect on their behavior. While in the Student Support Center, students may be asked to complete an OWL (Own it, Work on it, Learn from it) reflection. Students will have the opportunity to earn points by being present, positive, and productive in the Student Support Center. Students assigned to the SSC for In-School Suspension (ISS) are required to complete a minimum of three assignments during the school day. The Intervention Coordinator will assist students with all assignments.

Note: Personal Electronic Devices (Cell phones, etc.) are not permitted in the SSC.

#### School Rules & Expectations

##### Graffiti and Vandalism

Damaging, defacing or destroying school property is against the law. Students guilty of such acts will receive consequences to the full extent that the California Education Code, the California Penal Code and district policies allow. Parents are responsible and financially liable for acts of vandalism committed by their student.

##### Hall Passes

Students, office assistants and teacher assistants must have a pass to be out of class, including coming to the office for any reason. Students are to go directly to and from the designated destination on the pass. Students out of class without a pass, and/or without permission, and/or beyond a reasonable time to go to the restroom, will be sent directly to the Student Support Center and placed on the "no-pass" list.

##### Off Limit Areas

Students will be searched and receive disciplinary consequences if found unsupervised in the following areas during the school day. Repeated violations will result in ISS or home suspension.

- Faculty and student parking lot
- Athletic fields
- Behind classrooms 1,2,7,8,10, 11, library, student restrooms, or staff kitchen

##### Harassment

The district is committed to providing an educational environment free of unlawful harassment. Unlawful harassment because of sex, sexual orientation, race, ancestry, physical or mental disability, age, or any other protected basis includes, but is not limited to:

- Verbal conducts such as epithets, derogatory comments, slurs or unwanted sexual advances, invitations or comments.
- Visual conduct such as derogatory posters, photos, cartoons, drawings, or gestures.
- Physical conduct such as assault, unwanted touching, blocking normal movement or interfering with academic performance or progress directed at a student because of sex or race or any other protected basis.
- Retaliation for having reported or threatened to report harassment.
- Harassment conducted through any written form, including email.

#### EC 48900.4:

In addition to the grounds specified in Sections 48900 and 48900.2, a pupil enrolled in any of grades 4 to 12, inclusive, may be suspended from school or recommended for expulsion if the superintendent or the principal of the school in which the pupil is enrolled determines that the pupil has intentionally engaged in harassment, threats, or intimidation, directed against school district personnel or pupils, that is sufficiently severe or pervasive to have the actual and reasonably expected effect of materially disrupting classwork, creating substantial disorder, and invading the rights of either school personnel or pupils by creating an intimidating or hostile educational environment.

Students must seek help from an adult on campus if they are being harassed, intimidated or are threatened in any way.

#### Continued Defiance or Harassment of Staff

CCHS staff members have expectations regarding their classroom or workspace. Students are expected to comply with staff member directions. Aggressive and/or chronic defiance of a teacher's directions through repeated refusal to follow directions, loud and/or hostile tone, profanity, close proximity, gestures and/or aggressive movements is harassment. This type of behavior will result in progressive discipline, up to and including suspension or expulsion under EC 48900.4.

#### Personal Electronic Devices (cell phones, etc.)

Cache Creek has a no cell phone use in the classroom policy. Students cannot surf, swipe, play, chat or text in class. When a teacher says "put cell phones away", students will put cell phones away in pockets, purses, backpacks, or lock them up in the classroom cell phone locker. Students must follow teacher directions on this policy. Students cannot remain in the classroom setting if they cannot follow teacher directions to put their cell phone away. External Speakers are not permitted at any time.

#### Other prohibited items

Other items prohibited include, but are not limited to: permanent markers, laser pointers, aerosol containers, spikes and water pistols. These items will be confiscated and will not be returned.

#### Fighting/Dispensing from a Fight

A fight or intent to fight will result in a 3 to 5 day home suspension. Student(s) may be cited by a Woodland Police Officer, and may be transported to juvenile hall. The administration may pursue expulsion from the WJUSD if serious injury results or if there is a second fight in the same year. Students who encourage, observe and/or fail to disperse from the scene of a fight may also face disciplinary action.

#### Possession of weapons

Possession of weapons such as firearms, knives, explosives or any dangerous objects are not permitted on any school campus. Possession of a weapon will result in a recommendation for expulsion. Knives of any size are considered a dangerous weapon and are not permitted on campus.

#### Skateboards, Bicycles and Scooters

The use of skateboards, bicycles and scooters are prohibited on campus. These items will be confiscated if observed being used. Students may leave these items in the office for safe keeping during the school day. Skateboards must be in a duffel bag/backpack in order to bring them on the school bus. Failure to do so, will result in a citation.

#### Profanity/Vulgarity

Intimidation and harassment (see EC 48900.4 above) does not require the intent of the accused. Profanity and vulgarity, especially if deemed by others to be intimidation or harassment, will not be tolerated. Staff will intervene when necessary. Defiance of staff and/or profanity or vulgarity being directed toward any staff member will result in a home suspension. Profanity and vulgarity in the classroom is not acceptable and will result in consequences ranging from a warning to a home suspension.

#### Public Displays of Affection

Each student has the right to feel comfortable in the school environment. Public displays of affection, beyond holding hands, can be offensive to both staff and students. This includes touching, body rubbing, petting, kissing, or any other contact that may be considered sexual in nature. Staff will offer a warning first. Subsequent violations may result in disciplinary consequences deemed appropriate by the school principal.

### Student Parking

Students may not go to their cars during school hours. Student parking and driving on campus is a privilege, and violations may result in disciplinary action and possible loss of on-campus parking. The school and district are not responsible for theft or damage to a student's vehicle or theft of the contents inside the vehicle. California Highway Patrol, Sheriff and Fire Department personnel may issue citations to parked vehicles in violation of safety, handicapped and fire access codes. Any unsafe driving on or about school will result in disciplinary action.

### Closed Campus

Cache Creek High School is a closed campus. Students must remain on campus during regular school hours. Students who need to leave school must first report to the office and request permission to leave. Students must have written permission or a phone call from a parent or guardian to leave campus.

### Campus Visitors

All visitors, including parents, must check in with the office. Students may not have a guest at school at any time.

### Personal Items

CCHS assumes no responsibility for the loss or theft of personal property. Cell phones, iPods/MP3 players and electronic toys are all considered personal property. Students are strongly encouraged to leave all such items at home. Lost and found is located in the main office. Efforts will be made to return identified items.

### Delivery of items to Students

Food, balloons, flowers or other gifts should not be ordered for delivery at school. If deliveries arrive, they will be held in the main office until the end of the school day.

### Questioning by Outside Authority

Any law enforcement agent, with appropriate identification, has the authority and right to question students while at school.

### Drug-Free Tobacco-Free Zone

Cache Creek High School, as with all WJUSD property, is a drug-free, tobacco-free zone. Use, possession or sale of drugs, alcohol or any other controlled substance is not permitted on campus. This applies at all times on campus, including school activities that are held after school hours (Penal Code §308). Consequences enforced will range from suspension to Expulsion.

### Display of Drug Culture

It is not appropriate for students to display, in words, actions, appearance, and presence, the patterns of usage, socialization, language, social hierarchy, and the buying/selling of drugs. Examples include smelling like marijuana, usage of illegal drugs at school, discussions of the illegal transaction and use of drugs, and/or wearing close that are symbols of drug culture (e.g. marijuana leaf). Displays of drug culture disrupts the orderly conduct of school activities and threatens those who are not part of the drug culture. Additionally, some individuals have a physical response to the smell of marijuana. Responses to displays of drug culture may include the following:

- Warning (Example: "Don't come to school smelling like marijuana.")
- Phone call home (Example: "Your student came to school smelling like marijuana.")
- Suspension (Contraband – Ed Code 48900(c)(j); Disruption/defiance Ed Code 48900(k))
- Expulsion (Selling controlled substance 48915(c)(3))

## **(J) Hate Crime Reporting Procedures and Policies**

No individual student or group of students shall, through physical, written, verbal, or other means, harass, sexually harass, threaten, intimidate, retaliate, cyberbully, cause bodily injury to, or commit hate violence against any other student or school personnel.

To the extent possible, district schools shall focus on the prevention of bullying by establishing clear rules for student conduct and implementing strategies to promote a positive, collaborative school climate. Students shall be informed, through student handbooks and other appropriate means, of district and school rules related to bullying, mechanisms available for reporting incidents or threats, and the consequences for engaging in bullying.

As appropriate, the district shall provide students with instruction, in the classroom or other educational settings, that promotes effective communication and conflict resolution skills, social skills, character/values education, respect for cultural and individual differences, self-esteem development, assertiveness skills, and/or appropriate online behavior.

Staff shall receive related professional development, including information about early warning signs of bullying, harassing, and intimidating behaviors and effective response.

Based on an assessment of bullying incidents at school, the Superintendent or designee may increase supervision and security in areas where bullying most often occurs, such as classrooms, playgrounds, hallways, restrooms, cafeterias.

Students are encouraged to notify school staff when they are being bullied or suspect that another student is being victimized. In addition, the Superintendent or designee shall develop means for students to report threats or incidents confidentially and anonymously.

School staff who witness an act of bullying shall immediately intervene to stop the incident when it is safe to do so. (Education Code 234.1)

When appropriate based on the severity or pervasiveness of the bullying, the Superintendent or designee shall notify the parents/guardians of victims and perpetrators and may contact law enforcement.

The Superintendent, principal, or principal's designee may refer a victim, witness, perpetrator, or other student affected by an act of bullying to a school counselor, school psychologist, prevention and crisis counselor, social worker, child welfare attendance personnel, school nurse, or other support services personnel for case management, counseling, and/or participation in a restorative practice program as appropriate. (Education Code 48900.9)

Any complaint of bullying, whether it is discriminatory or nondiscriminatory, shall be investigated and resolved in accordance with law and the district's uniform complaint procedures specified in AR 1312.3- Uniform Complaint Procedures.

Corrective actions for a student who commits an act of bullying of any type on school premises, or off campus in a manner that causes or is likely to cause a substantial disruption to the campus, may include counseling, restorative practice, behavioral intervention and education, and, if the behavior is severe or pervasive as defined in Education Code 48900, may include suspension or expulsion, in accordance with district policies and regulations.

Any employee who permits or engages in bullying or retaliation related to bullying shall be subject to disciplinary action, up to and including dismissal.

For additional information see:

BP and AR 1312.3 Uniform Complaint Procedures BP 4119.11, 4219.11, 4319.11 Sexual Harassment BP 5131.2 Bullying  
BP and AR 5144.1 Suspension and Expulsion/Due Process  
BP 5145.3 Nondiscrimination/Harassment

See District website under Board of Education and at <http://www.gamutonline.net/district/woodland>

## **Safety Plan Review, Evaluation and Amendment Procedures**

The Governing Board recognizes that students and staff have the right to a safe and secure campus where they are free from physical and psychological harm. The Board is fully committed to maximizing school safety and to creating a positive learning environment that teaches strategies for violence prevention and emphasizes high expectations for student conduct, responsible behavior and respect for others.

The Superintendent/Principal or designee oversees the development of a comprehensive district-wide safety plan that identifies major safety concerns as well as the district's goals and priorities for safe schools. The plan includes violence prevention strategies and actions to be taken in the event of a crisis.

School safety plan is reviewed, updated, and approved by governing board by March 1st of each year.

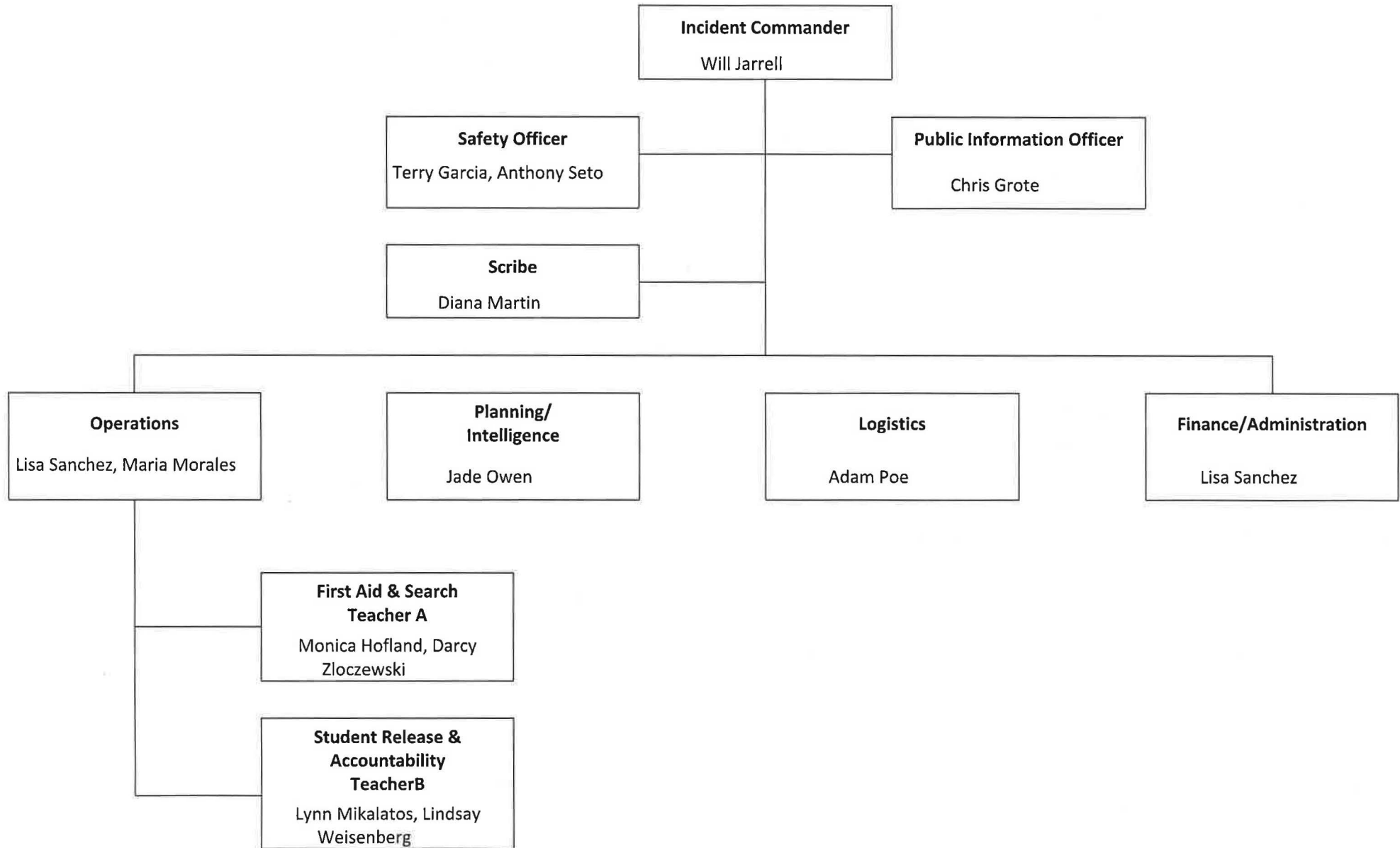
The Board reviews the comprehensive District and School safety plans in order to ensure compliance with state law, Board policy, and Administrative Regulation and approves the plan at a regularly scheduled meeting of the Board.

## Safety Plan Appendices

### Safety Plan Review, Evaluation and Amendment Procedures

<b>Activity Description</b> (i.e. review steps, meetings conducted, approvals, etc)	<b>Date and Time</b>	<b>Attached Document</b> (description and location)
School Safety Committee to review plan, solicit input from staff	August 11, 2022	Safety meeting slide deck available for review in the principal's office.
Staff Safety Drills Procedures/Protocols Training	September 14, 2022	Staff Meeting agenda available for review in the principal's office.
Conduct Safety Drills	4 times per year	Agendas, notes, and Minutes are available for review in the principal's office.
Debrief Safety Drills with staff	Same day as drill	Agendas, notes, and Minutes are available for review in the principal's office.
School Site Council/School Safety Teams Review/Approves Safety Plans	September 15, 2021	Agendas, notes, and Minutes are available for review in the principal's office.

Cache Creek High School Incident Command System



## **Incident Command Team Responsibilities**

### **Standardized Emergency Response Management System Overview**

The California Standardized Emergency Management System (SEMS) is designed to centralize and coordinate emergency response through the use of standardized terminology and processes. This greatly facilitates the flow of information and resources among the agencies participating in response to an emergency. There are five functions of the SEMS: Management, Planning/Intelligence, Operations, Logistics, and Finance/Administration. The roles used to carry out these functions are listed below.

#### **Finance/Administration**

Finance & Administration involves the purchasing of all necessary materials, tracking financial records, timekeeping for emergency responders, and recovering school records following an emergency. These activities are performed by a single person who reports directly to the Incident Commander.

#### **Incident Commander**

During an emergency, the Incident Commander directs response actions from a designated Command Post. To effectively do this, the Incident Commander must constantly assess the situation, and develop and implement appropriate strategies. The Incident Commander must be familiar with the available resources, accurately document all response actions, and effectively communicate response strategies to others participating in the response. This function is typically filled by the school principal. The principal is assisted in carrying out this function by a Public Information & Liaison Officer and Safety Officer.

#### **Logistics**

Logistics supports the response by coordinating personnel; assembling and deploying volunteers; providing supplies, equipment, and services; and facilitating communications among emergency responders, as well as arranging for transportation needs.

#### **Operations**

The Operations Chief manages and directs emergency response activities on campus. This includes staff performing first aid, crisis intervention, search and rescue, site security, damage assessment, evacuations, and the release of students. The Operations Chief allows for the Incident Commander to carry out their responsibilities.

#### **Planning/Intelligence**

Planning and Intelligence involves the use of various methods to efficiently gather information, weigh and document the information for significance, and actively assess the status of the emergency. This understanding and knowledge about the situation at hand is vital to the effective management of a response. These activities are performed by a single person who reports directly to the Incident Commander.

#### **Public Information Officer**

The role of the Public Information Officer is to serve as the primary contact for anyone who wants information about the incident, including the media, public and parents. The Public Information Officer develops, reviews and coordinates all incident related information and public and agency briefings and releases, as well as communications to staff and students.

#### **Safety Officer**

The role of the Safety Officer is to monitor safety conditions and develop measures for assuring the safety of students and staff. The Safety Officer also reports unsafe acts or conditions to the Incident Commander before taking action unless immediate action is necessary to preserve life or property.

#### **Scribe**

The Liaison Officer is the primary contact for supporting agencies (police, fire, Red Cross, etc.) assisting at an incident. There is no need for a Liaison Officer if other agencies are not involved. The Incident Commander may decide to act as the Liaison Officer instead of appointing another staff member to handle these duties.

## **Emergency Response Guidelines**

### **Standard Response Guidelines:**

#### **4 ACTIONS**

Each protocol has specific staff and student actions that are unique to the action.

In the event a student or staff identifies the initial threat, calling 911 and administration is essential.

#### **LOCKOUT - "GET INSIDE. LOCK OUTSIDE DOORS"**

##### **Students are trained to:**

- Return to inside of building
- Do business as usual

##### **Teachers are trained to:**

- Recover students and staff from outside building
- Increased situational awareness
- Take roll, account for students
- Do business as usual

#### **LOCKDOWN - "LOCKS, LIGHTS, OUT OF SIGHT"**

##### **Students are trained to:**

- Move away from field of view
- Maintain silence

##### **Teachers are trained to:**

- Lock classroom door
- Lights out
- Move away from sight
- Maintain silence
- Do not open the door
- Take roll, account for students

## **EVACUATE - "TO A LOCATION"**

### **Students are trained to:**

- Leave stuff behind
- Bring their phone
- Form a single file line

### **Teachers are trained to:**

- Grab roll sheet if possible
- Lead students to Evacuation location
- Take roll, account for students

## **SHELTER - "FOR HAZARD USING A SAFETY STRATEGY"**

### **Hazards might include:**

- Tornado
- Hazmat
- Earthquake
- Tsunami Safety
- Strategies might include:
- Evacuate to shelter area
- Seal the room
- Drop, cover and hold
- Get to high ground

### **Strategies might include:**

- Evacuate to shelter area
- Seal the room
- Drop, cover and hold
- Get to high ground

### **Students are trained in:**

- Appropriate Hazards and Safety Strategies

### **Teachers are trained in:**

- Appropriate Hazards and Safety Strategies
- Take roll, account for students
- Report injuries or problems, at the Evacuation Assembly, to first responders using the Red Card/ Green Card method.

**1 DEMAND** The protocol also carries an obligation. Kids are smart. An implicit part of the SRP is that authorities and teachers tell them what's going on. Certainly, tempered at the elementary school. But middle school and above needs accurate information for the greatest survivability, to minimize panic and to mitigate recovery.

## Types of Emergencies & Specific Procedures

### Classroom Lockdown Procedures Reportable Incident

A lockdown is declared when, in the opinion of the Administrator, a situation exists threatening the safety of students and staff and requires that they remain in their classrooms.

#### Administrator's Responsibilities

- Immediately declare "**lockdown.**" (Shelter in Place)
- Call **911**, if necessary.
- Direct the school bells to be turned off.
- Escort any students in the hallways to a safe location.
- Isolate the **lockdown** area.
- Await the arrival of emergency responders.
- Coordinate with police/EMS personnel.

#### Staff's Responsibilities

- Teachers/staff with or without a class during a **lockdown** should immediately do a quick sweep of the hallway, instruct students to come into their rooms, record their names, and remain in a secure location to await further instruction.
- Lock your classroom door and close window blinds. Doors must never be opened. Proper authorities will have keys.
- Stay with and direct students, take attendance, and provide assistance.
- Keep students quiet and out of the line of sight from windows. Turn off all classroom lights.
- Maintain calm in the classroom – keep all students inside the classroom; No hall passes.
- Listen for announcements for further instructions, e.g., continue classroom instruction, reporting of missing students, etc.
- Wait with the students until a uniformed officer or school official known to you invites you out. Do not respond to the fire alarm during a **lockdown** unless a known Administrator makes a supporting announcement.
- Wait for an "**All Clear.**"

#### After Hours Responsibilities

- In the absence of an Administrator or supervisory staff member, an on-site staff member will declare a "**lockdown**" with specific reason, i.e., **lockdown – Take Cover.**
- Call **911.**

## **Accidents/Medical Emergencies Reportable Incident**

### **Administrator's Responsibilities**

- Call **911**.
- Report to the scene.
- Secure and isolate the area.
- Call medical code lockdown if an incident occurs during a passing or lunch period.
- Have staff trained in first aid/CPR respond to the area to assist.
- Assign an individual to meet and escort the emergency medical responders to the scene.
- Notify the parent/guardian.
- Provide the police/EMS emergency information.
- Accompany the student/staff to the hospital if the parent/guardian cannot be there.
- Call the Superintendent's Office at 530-406-3202.
- Initiate support services for students/staff immediately through the Student Support Team.

### **Staff's Responsibilities**

- Evaluate the accident scene.
- If appropriate, remove students from the area so school/emergency personnel can attend to students or staff members in need.
- Direct any unaffected persons to a safe and secure area.
- Notify the Administrator. Advise them of the number of injured and of the situation. Give the location.
- If the scene is safe, proceed to the victim and assess the severity of the injury.
- Stabilize the victim and administer first aid, if needed.
- Assist the emergency medical responders.
- If the scene is not safe, e.g. electric shock, downed wires, etc., wait for EMS.

### **After Hours' Responsibilities**

- Same as Administrator's Responsibilities.
- Call the Superintendent's office at 530-406-3202 for further direction.

## **Weapons On School Property Reportable Incident**

Follow these procedures within the building whenever you know or suspect a student may have a weapon in a locker, car, or anywhere else on school property.

### **Administrator's Responsibilities**

- Declare a **"lockdown"** if the situation appears threatening to the safety of students and staff.
- Call 911
- Call the Superintendent's Office at 530-406-3202.
- Determine if a reasonable suspicion exists to search for a weapon.

### **Staff's Responsibilities**

- Notify the Administrator.
- Do not attempt to approach or confiscate.

**IF A WEAPON IS FOUND, ISOLATE THE AREA  
AND DO NOT TOUCH THE WEAPON. POLICE WILL SECURE IT FOR EVIDENCE.**

- Await further instructions from the Administrator.

### **After Hours' Responsibilities**

- Same as Administrator's Responsibilities.
- Call 911.
- Call the Superintendent's office at 530-406-3202 for further direction.

**Intruder/Trespassing  
Reportable Incident**

**Definition:** Being present on school property without permission. Unauthorized presence in restricted areas of buildings, school grounds or bus (including students suspended or expelled from school).

**Administrator's Responsibilities**

- Assess the situation.
- Determine the location of the person and his/her description.
- If appropriate, declare "**lockdown.**"
- Call **911**.
- Meet the police and direct them to the location.
- Call the Superintendent's Office at 530-406-3202.
- When the situation is stabilized, announce "**All Clear.**"

**Staff's Responsibilities**

- Report the intruder to the office, with his/her description, location and other facts.
- Keep classrooms/students secure. If necessary, move to a safer area.
- Wait for the "**All Clear**" announcement.

**After Hours' Responsibilities**

- Same as Administrator's Responsibilities.
- Call the "On-Call" Supervisor for further direction (530) 308-1115

**ALL VISITORS MUST CHECK IN THE OFFICE  
AND DISPLAY A VISITOR'S PASS.**

## Unidentified Person on School Site Reportable Incident

### Administrator's Responsibilities

- Identify the problem and the location.
- Approach the subject and determine the nature of their business on campus.
- Ask for their identification.
- Request for them to accompany you to the office. If the suspect is looking for a specific student, check their file for court orders, e.g. personal protection orders, custody orders.
- If there is no acceptable reason to be on campus, ask the intruder to leave the campus.
- **If they refuse to leave:**
  - Call **911**
  - Call the Superintendent's Office at 530-406-3202.
  - Await a police response.
  - If appropriate, declare "**lockdown.**"

### Staff's Responsibilities

- Approach the subject and determine the nature of their business.
- Request that the subject report to the office.
- If possible, accompany the person to the office.
- If suspicious, notify the Administrator ASAP.
- Trust your instincts

### After Hours' Responsibilities

- Identify the problem and the location.
- Approach the subject and determine the nature of their business.
- Call the police if you suspect a problem at 911 and provide the suspect's description.
- Call the Superintendent's office at 530-406-3202 for further direction.

**Death On School Site (Natural Causes, Accidental Or Suicide)  
Reportable Incident**

Survey scene to determine safe approach.

**Administrator's Responsibilities**

- Identify the problem and the location. Secure and isolate the area. Determine if there is to be a **lockdown**.
- Call **911**. Limit student movement.
- Call the Superintendent's Office at 530-406-3202.
- Immediately initiate support services for students/staff through the Pupil Services Department.
- Secure emergency contact information on the deceased, if possible, and provide to police/EMS.

**Staff's Responsibilities**

- Identify the problem and the location. Secure and isolate the area.
- Call **911**.
- Notify the Administrator.
- Calmly remove the students from the area.
- Discourage discussion.
- Wait for the police/EMS responders to arrive.
- Identify students in need of immediate support.

**After Hours' Responsibilities**

- Same as Administrator's Responsibilities.
- Call the Administrator of Communications at 530-406-3202 for further direction.

**When a Trauma or Loss Occurs**

**Administrator's Responsibilities**

- Contact emergency responders if necessary.
- Secure the area and limit student movement.
- Contact the Superintendent's Office at 530-406-3202, who will inform the School Board and appoint Spokesperson to the media.
- Contact Pupil Services, who will engage the Student Support Team.
- Appoint or act as the Incident Commander.
- Verify the facts in writing.
- Develop appropriate communication for students, staff and families with district support.

## Active Shooter On School Site Reportable Incident

### Administrator's Responsibilities

- Declare a **"lockdown"**.
- Identify the problem and the location. Secure and isolate the area if possible.
- Call **911**.
- Call the Superintendent's Office at 530-406-3202.
- Assist the police in locating and identifying the possible suspects and victims.
- Provide the police/EMS with emergency information.
- Immediately initiate support services for students and staff through the Student Support Team.

### Staff's Responsibilities

- Stay calm.
- **If a shooting occurs while inside school buildings, get to a safe place. DO NOT** wait to initiate lockdown procedure.
  - Close and lock your classroom door after ushering students in the hallway into your room.
  - Students should lie flat on the floor and out of sight of windows.
  - Turn off the lights and remain quiet. Turn tables and desks on their sides to use a concealment as needed.
  - DO NOT leave your safe location until you are told to do so by law enforcement.
  - Do not evacuate a safe location if you hear a fire alarm or other warning.
- **If a shooting occurs while in open areas** (i.e. outside, during lunch or passing periods), assist students in running for cover and get to a safe place.
  - Run in a zig-zag pattern away from the shooting.
  - Take cover behind buildings, trees or other large objects.
  - If no cover is available, lie flat until it is safe to run.
  - Follow directions given by law enforcement.
  - Keep others calm. Assess injuries of students/staff with you.
  - Keep phone lines open for emergency personnel.
  - Wait for the police/EMS responders to arrive.

### After Hours' Responsibilities

- Same as the *Administrator's* Responsibilities.
- Call **911**.
- Call the Superintendent's office at 530-406-3202 for further direction.
- Assist the police in locating and identifying any possible suspects and victims.

## Unauthorized Removal/Missing/Abducted Person(s) Reportable Incident

### Overall Procedures

- If an abduction is observed or suspected, call **911**.
  - Provide a detailed description of the abductor (physical appearance, type/color of clothing, and make model/color/license number of any vehicle seen and direction of travel).
- If a person is missing/abducted, immediately notify the Administrator.
  - Provide a detailed description of clothing/time/location when person was last seen, and photograph of the person.

### Administrator's Responsibilities

#### Missing Person(s)

- Determine level of threat (K-6 vs 7-12)
- Conduct an immediate search of the school/school grounds.
- Call **911**.
- Call the District Office at 530-406-3202.
- Contact the custodial parent/guardian of the missing student.

#### Abduction

- Call **911**, provide suspect/vehicle information.
- Call the Superintendent's Office at 530-406-3202.
- If an abduction is witnessed by others, detain and isolate witnesses from each other for interviews with the Administrator/law enforcement.

### Staff's Responsibilities

#### Missing Student(s)

- Notify the Administrator.
- Assist the Administrator with questioning friends/classmates.
- Maintain control of the remaining students.

#### Abduction

- If an abduction is witnessed by others, detain and isolate witnesses from each other for interviews with the Administrator/law enforcement.
- Do not place yourself or students in harm's way.

### After Hours' Responsibilities

- Same as *Administrator's* Responsibilities.
- Call the Superintendent's office at 530-406-3202 for further direction.

## Armed Subject, Armed Robbery Or Hostage Reportable Incident

### Follow these procedures within the building whenever a person:

- Has a weapon.
- Says they have a weapon.
- Is holding another person against their will.

### Building Moves to “Lockdown” Procedure Immediately.

#### Overall Procedures

- Call **911**.
- Notify the Administrator. Relay accurate information.
- Where in the building is the event occurring?
- How many are involved (perpetrators and hostages)?
- What demands, if any, have been made?
- Is anyone injured?
- Render the appropriate assistance.

#### Administrator’s Responsibilities

- Immediately declare “**lockdown**.”
- Call **911**.
- Escort any students in hallways to a safe location.
- Isolate the **lockdown** area.
- Await the arrival of the emergency responders.
- Provide assistance as needed.
- Coordinate with the police/EMS personnel.
- Call the Superintendent’s Office at 530-406-3202.
- Mobilize the Crisis Management Team.

#### Staff’s Responsibilities

- If a weapon has been seen, follow the above procedures.
- Close and lock your classroom door.
- Identify missing/additional students, notify administration as possible
- If directed to leave your classroom, take your class record book with you, if possible.
- Do not attempt to contact the office unless you have pertinent information or require immediate medical attention.
- Await further instructions from the Administrator.

#### After Hours’ Responsibilities

- Same as *Administrator’s Responsibilities*.
- Call the Superintendent’s office at 530-406-3202 for further direction.

## Earthquake Reportable Incident

### Administrator's Responsibilities

- Evacuate with an Emergency bucket/bag to the evacuation meeting site.
- Initiate components of the Incident Command System as needed (maintenance/security, search and locate, first-aid, etc. as necessary for the severity of the situation).
- Account for all students and staff to the incident commander, detailing missing or injured students/staff.
- Call **911** for students/staff with injuries.
- Call the Superintendent's Office at 530-406-3202.
- Work with local fire, police agencies to secure the scene, if needed.

### Staff's Responsibilities

- Instruct students to protect their face and head from flying debris with arms, coats, books, etc.
- Take cover under a desk or table.
- Stay in position until the building tremors and/or flying debris ceases.
- When the earthquake tremors stop, assess student/staff injuries.
  - If necessary, call 911 and administer first-aid until help arrives.
- Remain calm.
- If the fire alarm sounds or is advised by the school administrator, evacuate a safe distance from the building, following standard evacuation procedures.
- Students who are injured and cannot be moved should be left in the classroom.
  - Teachers should remain with the injured students, having a "buddy" teacher take their class to the evacuation point.
- Do not allow students to re-enter an area after being evacuated.
- All missing or injured students should be reported to the school administrator and the evacuation meeting sites.

### After Hours' Responsibilities

- Document and report incident.
- Have victims complete an Incident Report Form.
- If physical injury occurred, assist with first-aid, if needed and call police.
- Call the Superintendent's office at 530-406-3202 for further direction.

## Severe Weather/Flooding

### Administrator's Responsibilities

- Administrators should monitor developing weather conditions.
- If conditions warrant, the following protective measures should be taken:
  - Determine whether any utilities need to be shut off for safety.
  - Identify safe areas of campus.
  - Order students and staff to proceed to the 'shelter in place' area.
- If there is a medical emergency call **911**.
- Call the Superintendent's Office at 530-406-3202.
- Administrator announces when students/staff are to return to their rooms.
- If damage has occurred to the building, the Administrator is to evacuate the affected areas/campus.
- Discourage the release of students until the severe weather passes.

### Staff's Responsibilities

- Follow directions to shelter in place, or proceed to other areas of the campus, directed by the school administrator.
- If the classroom becomes flooded, follow evacuation directions from the school administrator.
- Account for all classroom occupants.
- Remain calm.
- Close windows and doors; do not lock.
- If there are high winds, direct students to stay away from windows.
- Wait for "All Clear" to end shelter in place protocols.
- **If moving to a different location:**
  - Take your record/attendance book and "Emergency Response Flipchart."
  - Report to your designated area and call roll.
  - If you have additional or missing students, notify the Administrator/emergency responders.
  - Await further instruction from the Administrator.
  - Return to your designated area when "**All Clear**" is announced.

### After Hours' Responsibilities

- Monitor developing weather conditions.
- Call the Superintendent's office at 530-406-3202 for further direction.
- If conditions warrant, protective measures should be taken.
- Order students and staff to proceed to the shelter in place area.
- If there is a medical emergency, call **911**.
- If damage has occurred to the building, evacuate the affected areas/campus.

## Fire Reportable Incident

### Administrator's Responsibilities

- Evacuate the building by using the fire alarm.
- Call **911**; give the specific location, if known.
- Determine if students/staff need to evacuate campus, request transportation to the designated site.
- Call the Superintendent's Office at 530-406-3202.
- Clear exterior access to the building for emergency personnel.
- Assist the fire department with locating the utilities.
- Ensure the building is evacuated.
- Signal an "**All Clear**" when appropriate.

### Staff's Responsibilities

- Close windows and doors; Keep Door Locked.
- Be alert to assist any student with a disability, if needed.
- Evacuate students quietly and in an orderly fashion.
- Bring Emergency Response Flipchart and class roster.
- Report to your designated area and call roll; utilize missing students form.
- Report any missing students to the Administrator.
- Return to the building only after the building Administrator or fire department gives the "**All Clear**" signal.

### After Hours' Responsibilities

- Evacuate the building by using the fire alarm.
- Call **911**; give a specific location, if known.
- Call the Administrator of Communications at 530-406-3202
- Assist the fire department in locating the utilities(If appropriate)
- Ensure the building has been evacuated.
- Reoccupy the building when given an "**All Clear.**"

### NOTE:

- If arson is suspected, inform the responding police/fire personnel.
- Assist the police/fire department.
- Help locate any possible suspect and/or witness(es).
- If the fire was extinguished, still report the fire to the fire department for investigation.

**Bomb Threat Procedures (Device Located)  
Reportable Incident**

**Overall Procedures**

- Upon discovery of a suspicious device, immediately notify the Administrator.
- If a device is located in a classroom, immediately and calmly evacuate.

**UNDER NO CONDITION ATTEMPT TO TOUCH  
OR MOVE THE DEVICE.**

**TURN OFF CELL PHONES OR ELECTRONIC DEVICES —  
THEY CAN ACTIVATE EXPLOSIVE DEVICES.**

**Administrator's Responsibilities**

- Upon notification of a device located:
- Don't forget, there may be more than one device.
- Call **911**; use only landlines.
- Call the Superintendent's Office at 530-406-3202.
- Activate Bomb Threat Response Protocol.

**Staff's Responsibilities**

- Call school office on school telephone, not a cell phone.
- Wait for decision on whether to **lockdown** or evacuate.
- If **lockdown** is ordered, follow **lockdown** procedures.
- If **evacuation** is ordered, follow **evacuation procedures** as directed by the Administrator.
- Staff should look for and report all suspicious objects to the Administrator immediately.
- Once evacuated, stay in your designated areas until you are told it is safe to return to the building.

**After Hours' Responsibilities**

- Same as *Administrator's Responsibilities* except do not call the District Office.
- Call the "On-Call" Supervisor for further direction (530-308-1115)

**BOMB THREAT CHECKLIST (IF RECEIVED VIA PHONE)**  
**Reportable Incident**

**Bomb Threat Checklist (Phone)**

- **Stay Calm.** Take a deep breath and focus on what the caller says.
- **Keep the caller on the phone** as long as possible.
- **Ask the questions** in the bomb threat checklist, at right.
- **Complete the Bomb Threat Checklist** on this page.
- **Immediately contact the designated Administrator who will call 911.**
- **Cell phones and electronic devices must not be used.** They can trigger some types of bombs.
- **DO NOT TOUCH** anything suspicious.
- **Lockdown** the building according to instructions from your Administrator.

**Bomb Threat Checklist (Phone)**

- (Make copies of this page for reporting purposes and retain a copy for school file.)
- Date of call:
- Exact time of call:
- Exact words of caller:
- Person receiving call:
- Telephone number call received at:

**QUESTIONS TO ASK CALLER:**

- When is the bomb going to explode? \_\_\_\_\_ a.m./p.m.
- Where is the bomb?
- What does the bomb look like?
- What kind of bomb is it?
- What will cause it to explode?
- Did you place the bomb? Yes/No
- Why?
- Where are you calling from?
- What is your address?
- What is your name?

## BACKGROUND SOUNDS

Use back of form to describe sounds.

- Street noises
- Factory Machinery
- Phone Booth
- Animal Noises
- Voices
- Clear
- PA System
- Static
- o Music o House noises
- Long distance
- Local call
- Office machinery
- Motor
- Other:

## CALLER'S VOICE

*If voice is familiar, whom did it sound like?*

Sex:

- M
- F

Age:

- Accent
- Well spoken (educated)
- Incoherent
- Taped
- Foul Language
- Irrational

## THREAT LANGUAGE

- Message scripted by threat maker
- Normal Loud
- Calm Broken
- Slow Sincere
- Crying Giggling
- Slurred Angry
- Stutter Rapid
- Deep Stressed

Other:

**Evacuation Procedures - Utility Emergency**  
**EVACUATION PROCEDURES**

**Administrator's Responsibilities**

- Signal an evacuation from the building by using the fire alarm.
- Involve other staff as necessary.
- Call **911**
- Call the Superintendent's Office at 530-406-3202.
- If an off-site evacuation is needed, request transportation at (530-406-5980) to the designated site.

**COORDINATE YOUR EFFORT WITH CENTRAL OFFICE**  
**AND EMERGENCY RESPONDERS.**

**Staff's Responsibilities**

- Follow the evacuation routes posted in the room unless otherwise advised.
- Take your record/attendance books, your "Emergency Response Flipchart" and exit to the designated evacuation location.
- Close your classroom doors when leaving the room.
- Once outside, take attendance.
- Report missing student(s) ASAP to the Administrator/Emergency Responder.
- Remain with classes and await further instructions from the Administrator.

**After Hours' Responsibilities**

Same as Administrator's *Responsibilities*, except do not call the District Office.

## Utility Emergency

### A utility emergency constitutes any of the following:

- Water Leak
- Gas Leak
- No Heat or Air Conditioning
- Power Outage
- Hazardous Materials
- Sewer Back-Up, and
- Telephone Down

### Administrator's Responsibilities

- Identify the problem and location.
- Notify District Maintenance & Operations at 530-406-5930 so that they can call the utility company.
- Call the Superintendent's Office at 530-406-3202.
- Meet with the Head Custodian and/or M&O to determine the extent of situation and subsequent actions.
- Notify faculty, staff, students and/or families as appropriate concerning information regarding power outages, dangerous situations, utility failures, or information concerning the closing of the school due to power outage.
- If necessary, order the evacuation of an affected building to ensure the safety and welfare of the occupants due to special circumstances which may exist as a result of the emergency (primarily natural gas leaks).
- Keep the district office informed and consult with the Superintendent or designee on whether to keep the school open or close the school, if appropriate.
- If one part of the building is affected by the emergency, find alternate locations.

### Staff's Responsibilities

- Notify the Administrator.
- Evacuate students to an alternate location, if necessary.
- Wait for further instructions from the Administrator.

### After Hours' Responsibilities

- Same as *Administrator's Responsibilities*.
- Call the Superintendent's office at 530-406-3202 for further direction.

**Gas Leaks  
Reportable Incident**

Do not operate electrical devices or cell phones.

**Administrator's Responsibilities**

- Call **911**.
- Contact the Custodian.
- Contact the Maintenance Department to address the problem.
- **Do not turn on or off electrical switches, devices or cell phones.**
- Evacuate the building immediately.
- Call the Superintendent's Office at 530-406-3202
- If students/staff need to evacuate the campus, request transportation to the designated site.
- Signal "**All Clear**" when appropriate.

**Staff's Responsibilities**

- Notify the Administrator-in-Charge.
- **Do not turn on or off electrical switches, devices or cell phones.**
- Evacuate the building immediately.
- Await further instructions.
- When the "**All Clear**" is announced, re-occupy the building.

**After Hours' Responsibilities**

- Call the Superintendent's office at 530-406-3202 for further direction.
- Do not turn on or off electrical switches, devices or cell phones.
- Ventilate the area via opening windows/doors.
- Assist the gas company in the location of the leak.
- Keep the building Administrator advised of the situation.