

# New Hanover County Schools Overview of School Facility Utilization Study Findings

September 2023

CropperGIS

# Utilization Study Objectives

Cropper/McKibben have been asked to perform the following services for New Hanover County Schools:

1. Develop an updated demographic study for the county, which will include 10-year enrollment forecasts for every school by grade.
2. Assess the demographic study and school capacity, and develop a utilization forecast to identify long-term school facility needs;
3. Develop recommendations to address long-term facility needs. This may/will include considerations including boundary adjustments, building additions, and/or new school construction;

# Utilization Forecast Process

- Utilization is calculated by dividing the actual or forecasted enrollment of each school by year by the calculated facility capacity
- Actual enrollment for the 2022-23 school year will be based on the Fall 2022 student enrollment received from the district.
- Forecasted enrollment will be based on the results of the 2023 Demographic Study.
- Utilization percentages are color-coded according to the key below.

Utilization Color Key
Over 105%
96% to 105%
86% to 95%
76% to 85%
65% to 75%
Under 65%

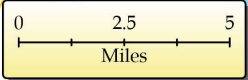
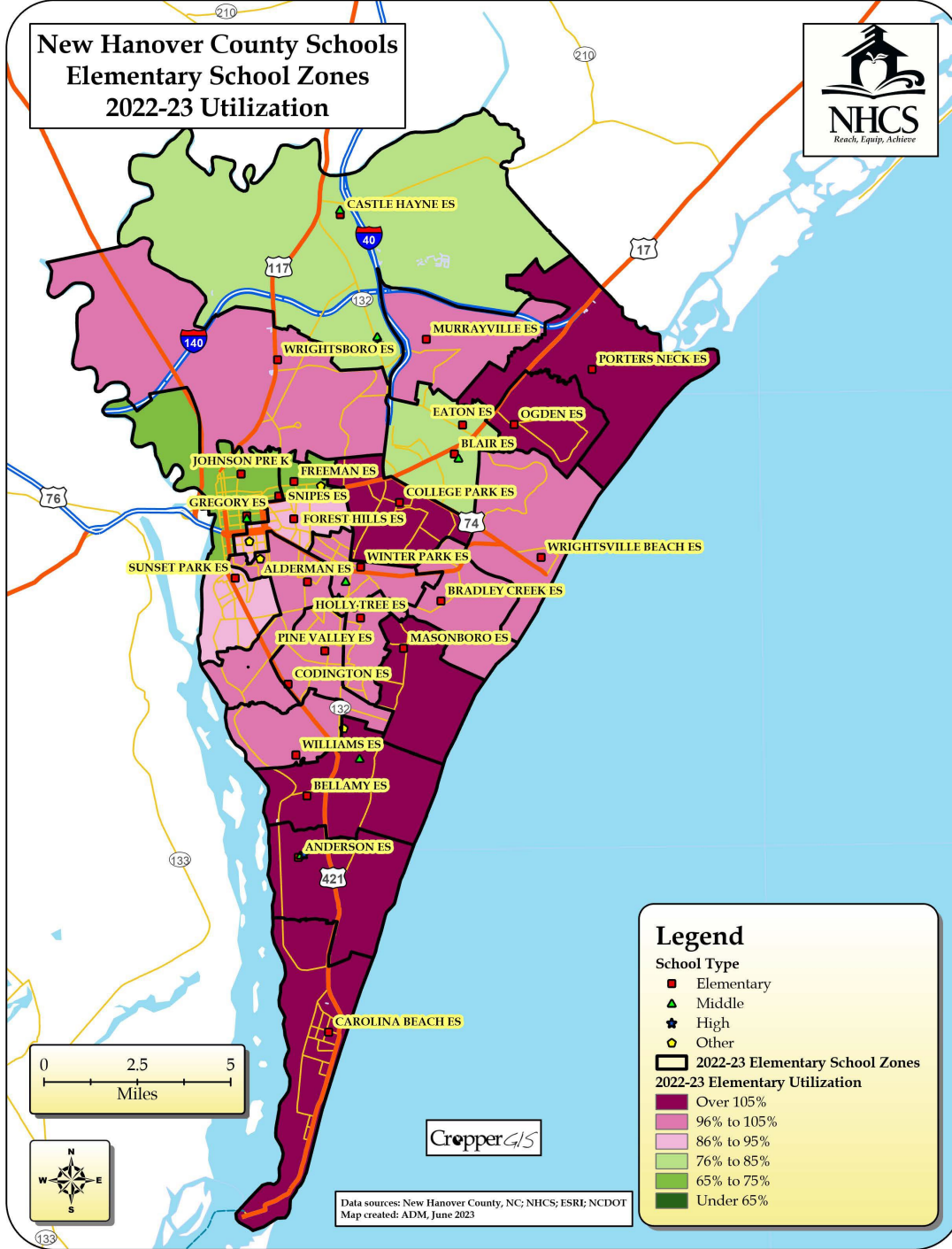
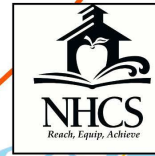
# Utilization Forecast – Elementary Schools

New Hanover County Schools Utilization Forecast														
Elementary Schools	School Name	Capacity		2022-23	2023-24	2024-25	2025-26	2026-27	2027-28	2028-29	2029-30	2030-31	2032-32	2032-33
	Alderman	294	Enrollment		291	309	315	312	328	328	335	340	342	346
Utilization				99%	105%	107%	106%	112%	112%	114%	116%	116%	118%	118%
Anderson	560	Enrollment		623	637	627	626	642	651	651	650	648	648	647
		Utilization		111%	114%	112%	112%	115%	116%	116%	116%	116%	116%	116%
Bellamy	415	Enrollment		556	560	559	571	588	571	579	585	587	590	592
		Utilization		134%	135%	135%	138%	142%	138%	140%	141%	141%	142%	143%
Blair	525	Enrollment		424	443	452	463	462	460	457	453	449	447	445
		Utilization		81%	84%	86%	88%	88%	88%	87%	86%	86%	85%	85%
Bradley Creek	344	Enrollment		352	340	346	320	309	304	306	309	313	314	318
		Utilization		102%	99%	101%	93%	90%	88%	89%	90%	91%	91%	92%
Carolina Beach	386	Enrollment		433	431	423	421	410	404	406	408	409	410	411
		Utilization		112%	112%	110%	109%	106%	105%	105%	106%	106%	106%	106%
Castle Hayne	525	Enrollment		424	440	442	449	452	454	459	463	466	467	471
		Utilization		81%	84%	84%	86%	86%	87%	88%	89%	89%	89%	90%
Codington	424	Enrollment		438	456	459	464	466	460	461	463	466	468	469
		Utilization		103%	108%	108%	109%	110%	108%	109%	109%	110%	110%	111%
College Park	527	Enrollment		457	457	455	447	456	451	451	453	458	461	464
		Utilization		87%	87%	86%	85%	87%	86%	86%	86%	87%	87%	88%
Eaton	431	Enrollment		438	452	455	458	459	461	461	462	460	463	467
		Utilization		102%	105%	106%	106%	106%	107%	107%	107%	107%	107%	108%
Forest Hills	368	Enrollment		336	319	304	299	283	276	282	286	292	298	306
		Utilization		91%	87%	83%	81%	77%	75%	77%	78%	79%	81%	83%
Freeman Magnet	414	Enrollment		301	309	312	323	328	329	327	327	324	323	323
		Utilization		73%	75%	75%	78%	79%	79%	79%	79%	78%	78%	78%
Gregory Magnet	587	Enrollment		522	535	542	561	568	567	568	568	567	569	569
		Utilization		89%	91%	92%	96%	97%	97%	97%	97%	97%	97%	97%
Holly Tree	425	Enrollment		422	422	406	382	388	391	390	390	396	402	402
		Utilization		99%	99%	96%	90%	91%	92%	92%	92%	93%	95%	95%
Murrayville	549	Enrollment		549	572	594	607	607	610	612	612	612	612	612
		Utilization		100%	104%	108%	111%	111%	111%	111%	111%	111%	111%	111%
Ogden	544	Enrollment		641	643	659	673	673	679	680	680	679	680	680
		Utilization		118%	118%	121%	124%	124%	125%	125%	125%	125%	125%	125%
Masonboro	456	Enrollment		576	603	610	615	595	602	593	590	590	593	597
		Utilization		126%	132%	134%	135%	130%	132%	130%	129%	129%	130%	131%
Pine Valley	448	Enrollment		466	478	487	489	485	498	492	490	486	488	491
		Utilization		104%	107%	109%	109%	108%	111%	110%	109%	108%	109%	110%
Porters Neck	549	Enrollment		605	663	707	754	791	761	756	750	742	735	731
		Utilization		110%	121%	129%	137%	144%	139%	138%	137%	135%	134%	133%
Snipes Magnet	520	Enrollment		388	379	369	367	361	361	362	363	366	371	375
		Utilization		75%	73%	71%	71%	69%	69%	70%	70%	70%	71%	72%
Sunset Park	466	Enrollment		408	420	435	438	444	454	451	450	449	449	450
		Utilization		88%	90%	93%	94%	95%	97%	97%	97%	97%	96%	96%
Williams	401	Enrollment		393	405	399	411	422	413	411	410	409	409	410
		Utilization		98%	101%	100%	102%	105%	103%	102%	102%	102%	102%	102%
Winter Park	294	Enrollment		304	315	321	329	326	319	319	319	320	322	324
		Utilization		103%	107%	109%	112%	111%	109%	109%	109%	109%	110%	110%
Wrightsboro	481	Enrollment		470	467	483	488	503	513	510	509	509	510	512
		Utilization		98%	97%	100%	101%	105%	107%	106%	106%	106%	106%	106%
Wrightsville Beach	258	Enrollment		263	268	269	265	258	257	260	264	268	271	274
		Utilization		102%	104%	104%	103%	100%	100%	101%	102%	104%	105%	106%
Elementary Schools Totals:	11,191	Enrollment		11,080	11,323	11,430	11,532	11,604	11,574	11,579	11,594	11,607	11,646	11,688
		Utilization		99%	101%	102%	103%	104%	103%	103%	104%	104%	104%	104%



# Utilization Forecast – Elementary Schools

## New Hanover County Schools Elementary School Zones 2022-23 Utilization



CropperGIS

Data sources: New Hanover County, NC; NHCS; ESRI; NCDOT  
Map created: ADM, June 2023

**Legend**

**School Type**

- Elementary
- Middle
- High
- Other

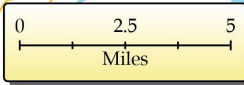
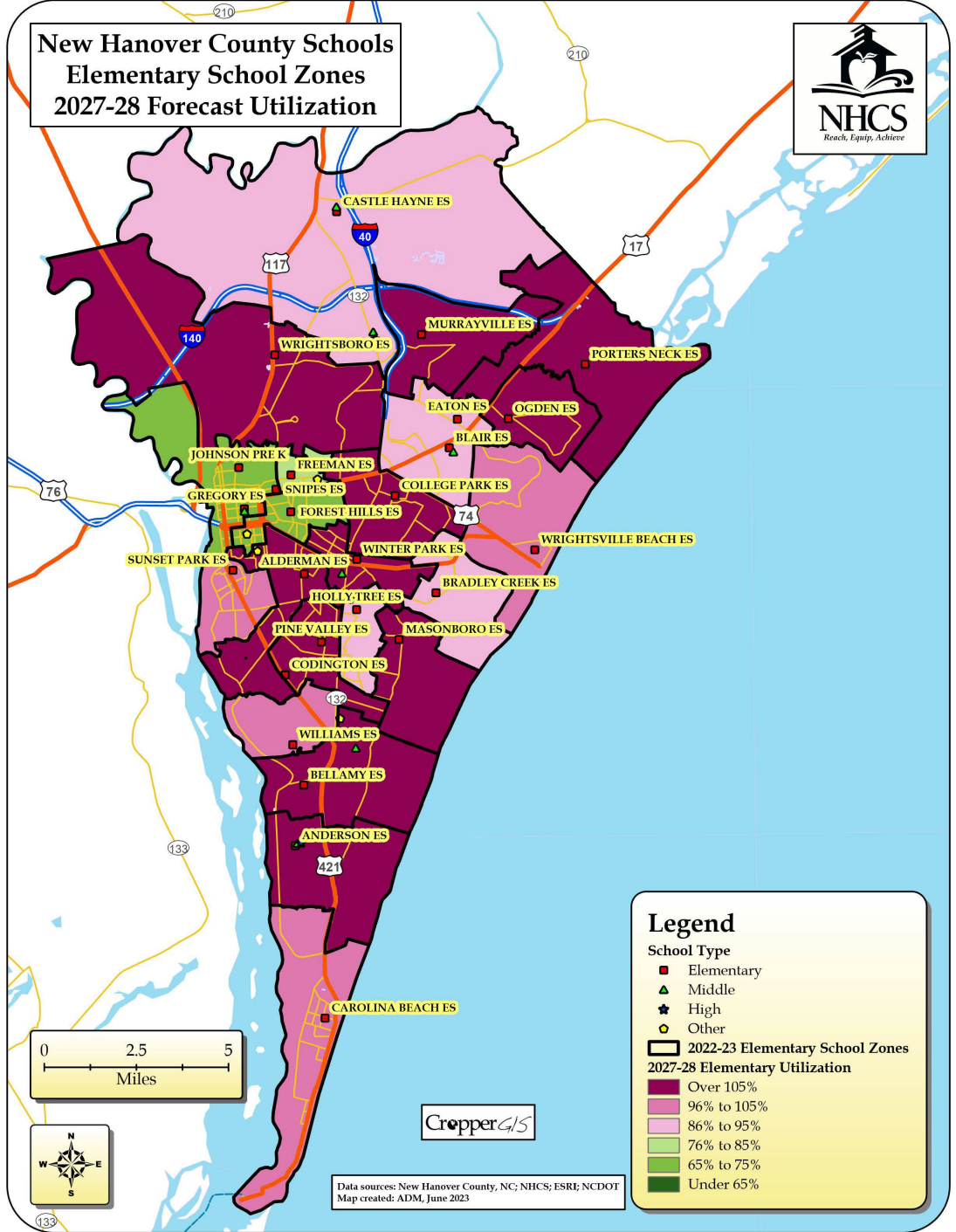
**2022-23 Elementary School Zones**

**2022-23 Elementary Utilization**

- Over 105%
- 96% to 105%
- 86% to 95%
- 76% to 85%
- 65% to 75%
- Under 65%

# Utilization Forecast – Elementary Schools

## New Hanover County Schools Elementary School Zones 2027-28 Forecast Utilization

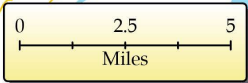
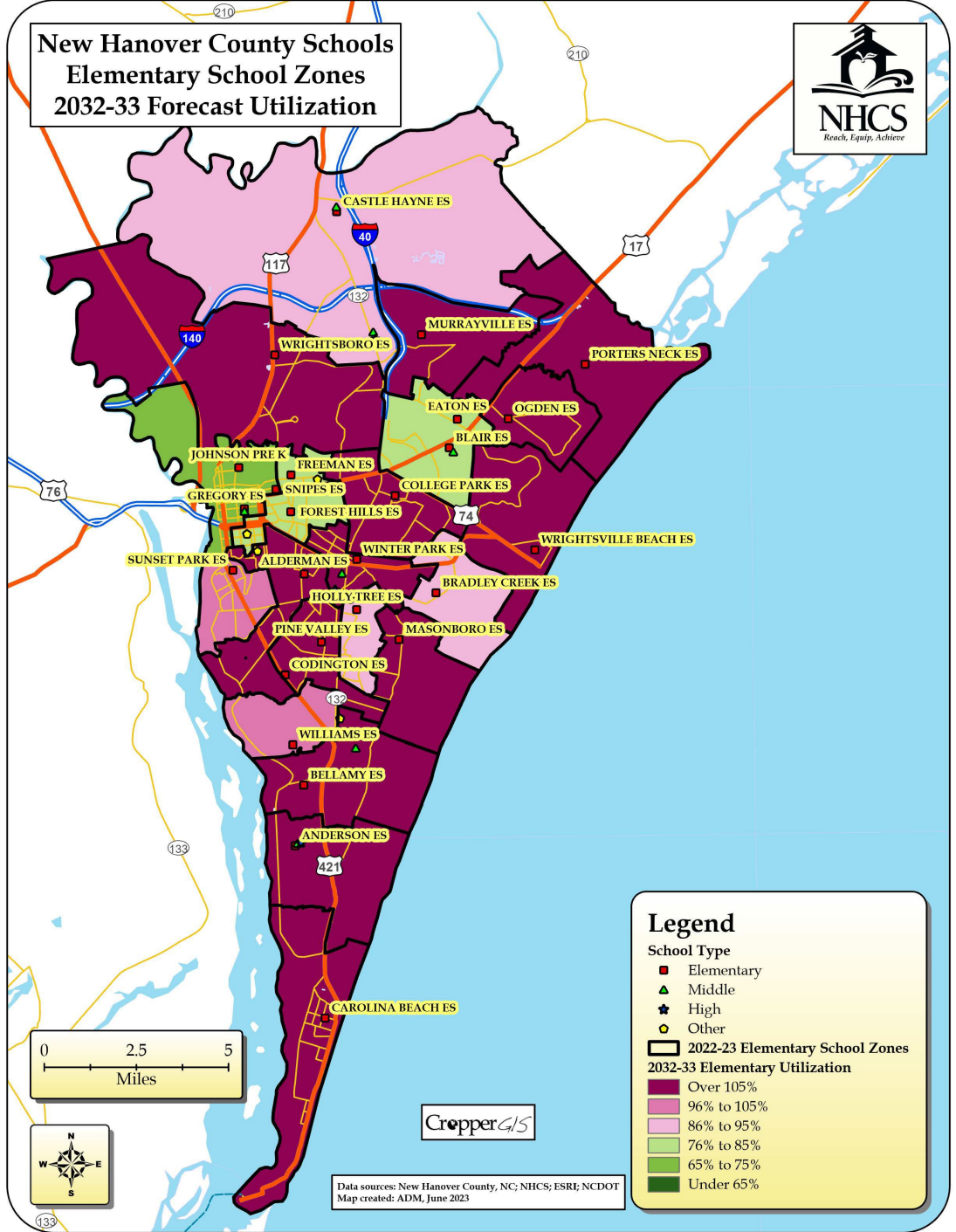
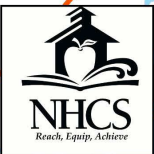


CropperGIS

Data sources: New Hanover County, NC; NHCS; ESRE; NCDOT  
Map created: ADM, June 2023

# Utilization Forecast – Elementary Schools

## New Hanover County Schools Elementary School Zones 2032-33 Forecast Utilization



CropperGIS

Data sources: New Hanover County, NC; NHCS; ESRI; NCDOT  
Map created: ADM, June 2023

### Legend

**School Type**

- Elementary
- ▲ Middle
- ★ High
- Other
- 2022-23 Elementary School Zones

**2032-33 Elementary Utilization**

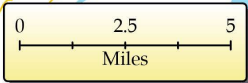
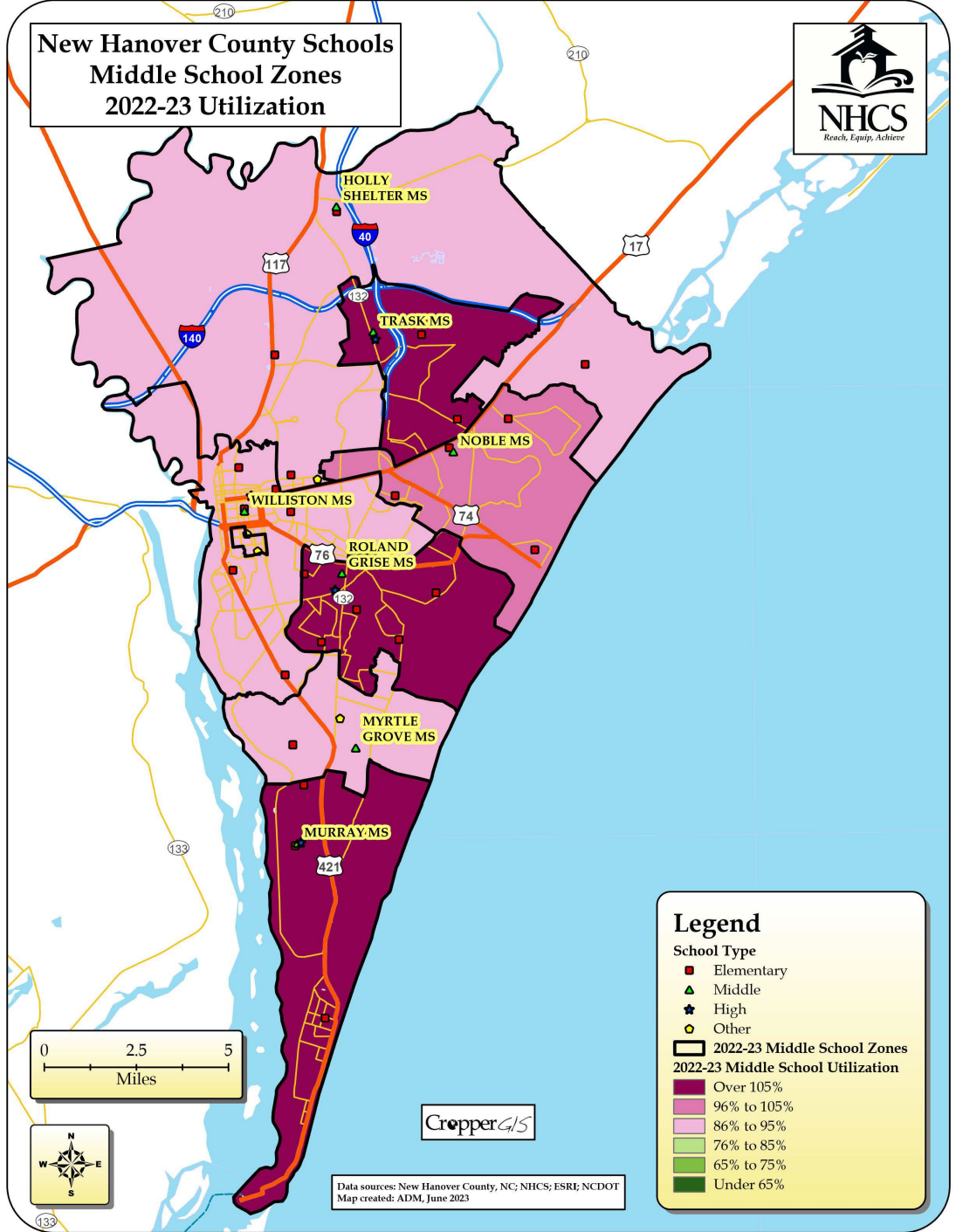
- Over 105%
- 96% to 105%
- 86% to 95%
- 76% to 85%
- 65% to 75%
- Under 65%

# Utilization Forecast – Middle and High Schools

Middle Schools	School Name	Capacity		2022-23	2023-24	2024-25	2025-26	2026-27	2027-28	2028-29	2029-30	2030-31	2032-32	2032-33
	Holly Shelter	991	Enrollment	858	825	838	881	873	926	997	1063	1054	1042	1021
			Utilization	87%	83%	85%	89%	88%	93%	101%	107%	106%	105%	103%
	Murray	809	Enrollment	879	873	896	859	842	814	815	836	836	837	827
			Utilization	109%	108%	111%	106%	104%	101%	101%	103%	103%	103%	102%
	Myrtle Grove	747	Enrollment	645	587	595	593	593	595	618	637	631	626	618
			Utilization	86%	79%	80%	79%	79%	80%	83%	85%	84%	84%	83%
	Noble	633	Enrollment	653	619	602	581	586	599	606	609	622	625	623
			Utilization	103%	98%	95%	92%	93%	95%	96%	96%	98%	99%	98%
	Roland-Grise	731	Enrollment	860	843	888	899	902	888	855	847	855	843	827
			Utilization	118%	115%	121%	123%	123%	121%	117%	116%	117%	115%	113%
	Trask	615	Enrollment	672	634	598	575	617	641	662	666	669	669	660
			Utilization	109%	103%	97%	93%	100%	104%	108%	108%	109%	109%	107%
	Williston	793	Enrollment	684	698	715	755	734	721	718	724	736	741	739
			Utilization	86%	88%	90%	95%	93%	91%	91%	91%	93%	93%	93%
Middle School Totals:	5,319	Enrollment	5,251	5,079	5,132	5,143	5,147	5,184	5,271	5,382	5,403	5,383	5,315	
		Utilization	99%	95%	96%	97%	97%	97%	99%	101%	102%	101%	100%	
High Schools	School Name	Capacity		2022-23	2023-24	2024-25	2025-26	2026-27	2027-28	2028-29	2029-30	2030-31	2032-32	2032-33
	Ashley	1,780	Enrollment	1,974	1,958	1,916	1,833	1,800	1,809	1,779	1,733	1,757	1,718	1,744
			Utilization	111%	110%	108%	103%	101%	102%	100%	97%	99%	97%	98%
	Hoggard	1,788	Enrollment	2,226	2,259	2,161	2,106	2,092	2,055	2,140	2,136	2,114	2,110	2,081
			Utilization	124%	126%	121%	118%	117%	115%	120%	119%	118%	118%	116%
	Laney	1,887	Enrollment	2,214	2,297	2,328	2,265	2,206	2,149	2,111	2,149	2,251	2,323	2,411
			Utilization	117%	122%	123%	120%	117%	114%	112%	114%	119%	123%	128%
	New Hanover	1,678	Enrollment	1,477	1,496	1,435	1,330	1,345	1,325	1,321	1,343	1,353	1,365	1,386
			Utilization	88%	89%	86%	86%	80%	79%	79%	80%	81%	81%	83%
	High School Totals:	7,133	Enrollment	7,891	8,010	7,840	7,534	7,443	7,338	7,351	7,361	7,475	7,516	7,622
Utilization			111%	112%	110%	106%	104%	103%	103%	103%	103%	96%	105%	107%

# Utilization Forecast – Middle Schools

## New Hanover County Schools Middle School Zones 2022-23 Utilization



CropperGIS

Data sources: New Hanover County, NC; NHCS; ESRI; NCDOT  
Map created: ADM, June 2023

### Legend

#### School Type

- Elementary
- ▲ Middle
- ★ High
- Other

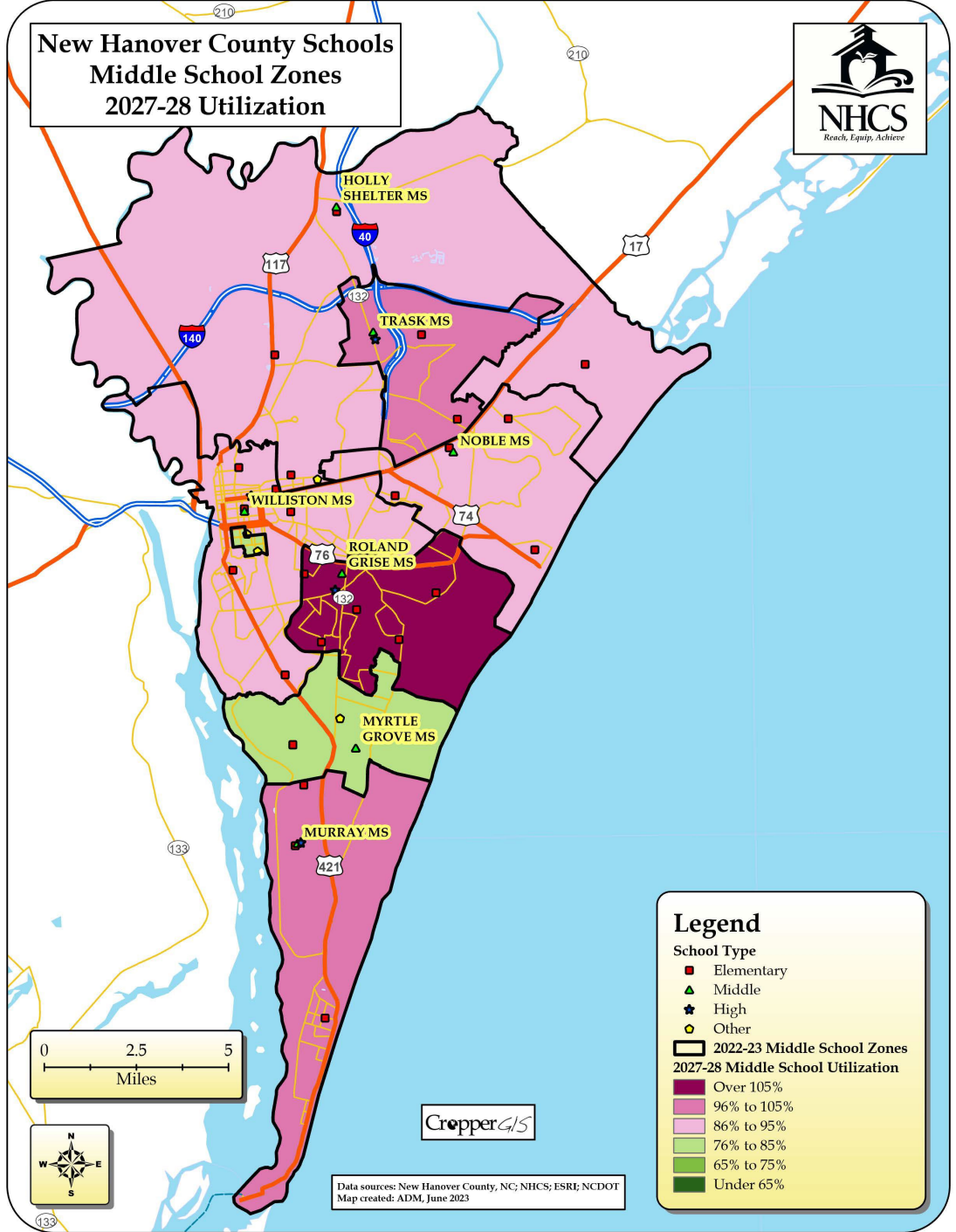
#### 2022-23 Middle School Zones

#### 2022-23 Middle School Utilization

- Over 105%
- 96% to 105%
- 86% to 95%
- 76% to 85%
- 65% to 75%
- Under 65%

# Utilization Forecast – Elementary Schools

## New Hanover County Schools Middle School Zones 2027-28 Utilization



**Legend**

**School Type**

- Elementary
- ▲ Middle
- ★ High
- Other

**2022-23 Middle School Zones**

**2027-28 Middle School Utilization**

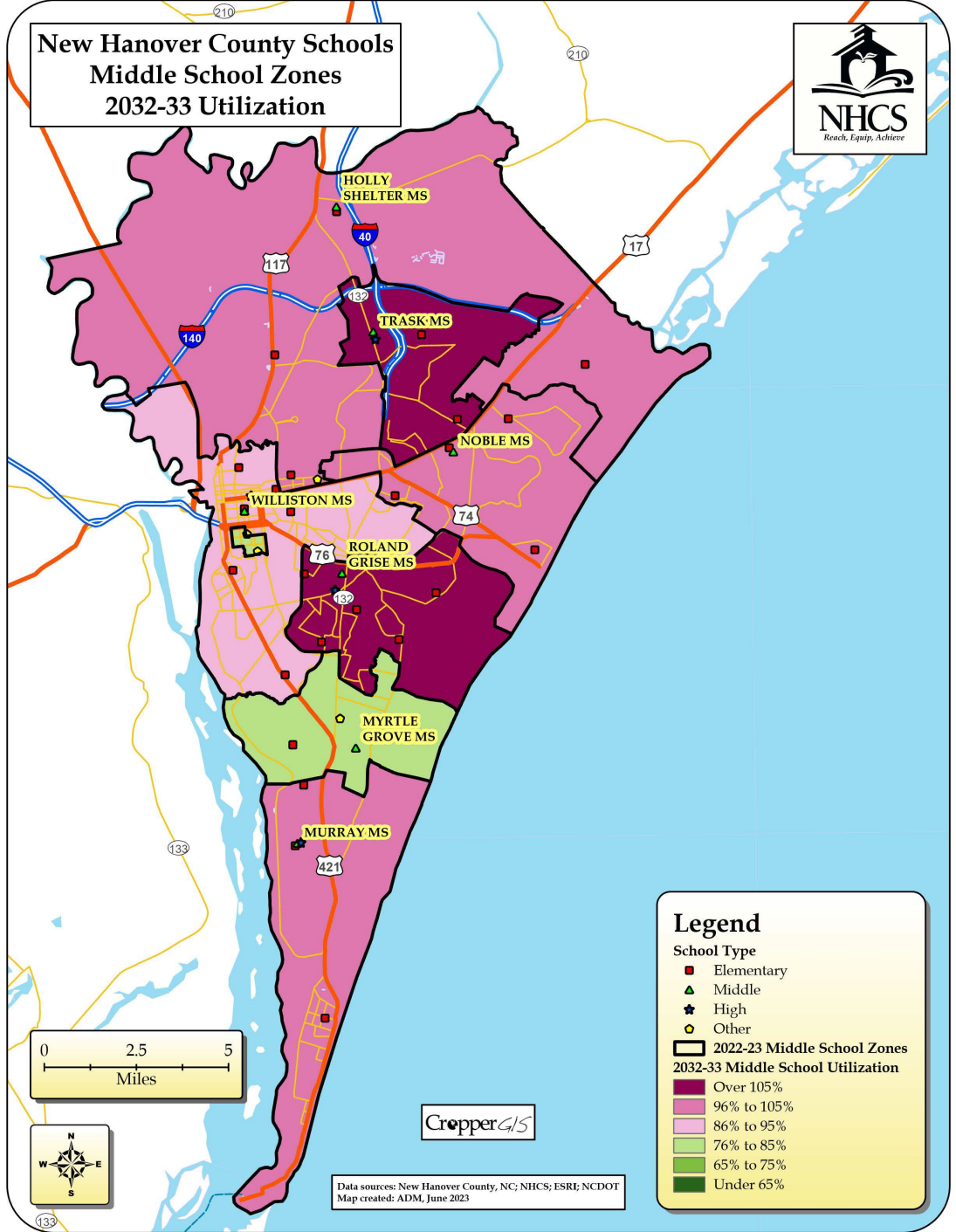
- Over 105%
- 96% to 105%
- 86% to 95%
- 76% to 85%
- 65% to 75%
- Under 65%

CropperGIS

Data sources: New Hanover County, NC; NHCS; ESRI; NCDOT  
Map created: ADM, June 2023

# Utilization Forecast – Elementary Schools

## New Hanover County Schools Middle School Zones 2032-33 Utilization



**Legend**

**School Type**

- Elementary
- ▲ Middle
- ★ High
- Other

**2022-23 Middle School Zones**

**2032-33 Middle School Utilization**

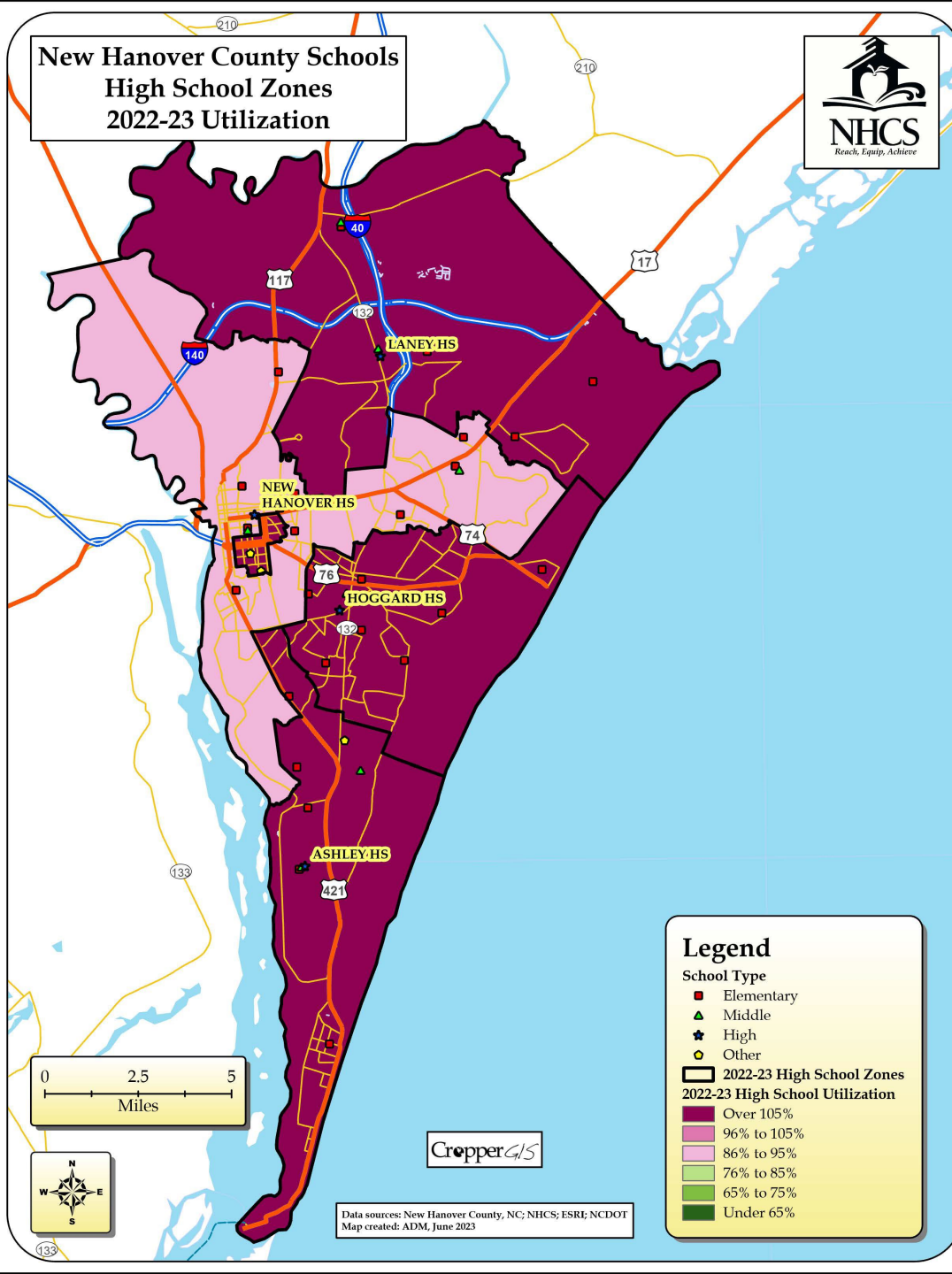
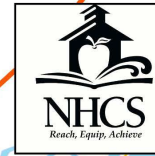
- Over 105%
- 96% to 105%
- 86% to 95%
- 76% to 85%
- 65% to 75%
- Under 65%

CropperGIS

Data sources: New Hanover County, NC; NHCS; ESRI; NCDOT  
Map created: ADM, June 2023

# Utilization Forecast – High Schools

## New Hanover County Schools High School Zones 2022-23 Utilization



**Legend**

**School Type**

- Elementary
- ▲ Middle
- ★ High
- Other

▭ 2022-23 High School Zones

**2022-23 High School Utilization**

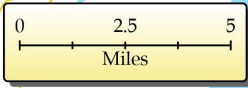
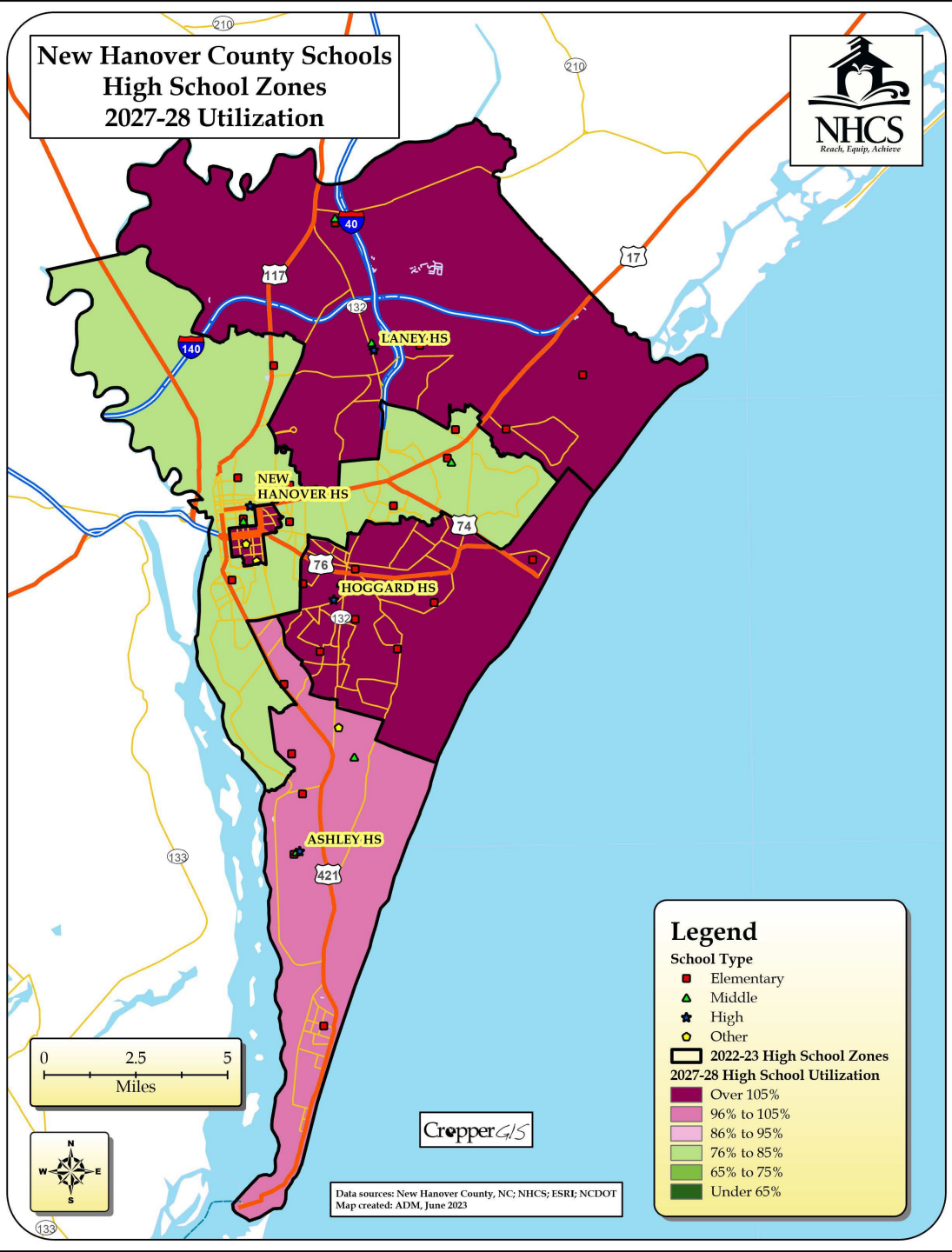
- Over 105%
- 96% to 105%
- 86% to 95%
- 76% to 85%
- 65% to 75%
- Under 65%

CropperGIS

Data sources: New Hanover County, NC; NHCS; ESRI; NCDOT  
Map created: ADM, June 2023

# Utilization Forecast – High Schools

## New Hanover County Schools High School Zones 2027-28 Utilization



CropperGIS

Data sources: New Hanover County, NC; NHCS; ESRE; NCDOT  
Map created: ADM, June 2023

### Legend

#### School Type

- Elementary
- ▲ Middle
- ★ High
- Other

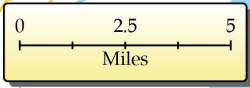
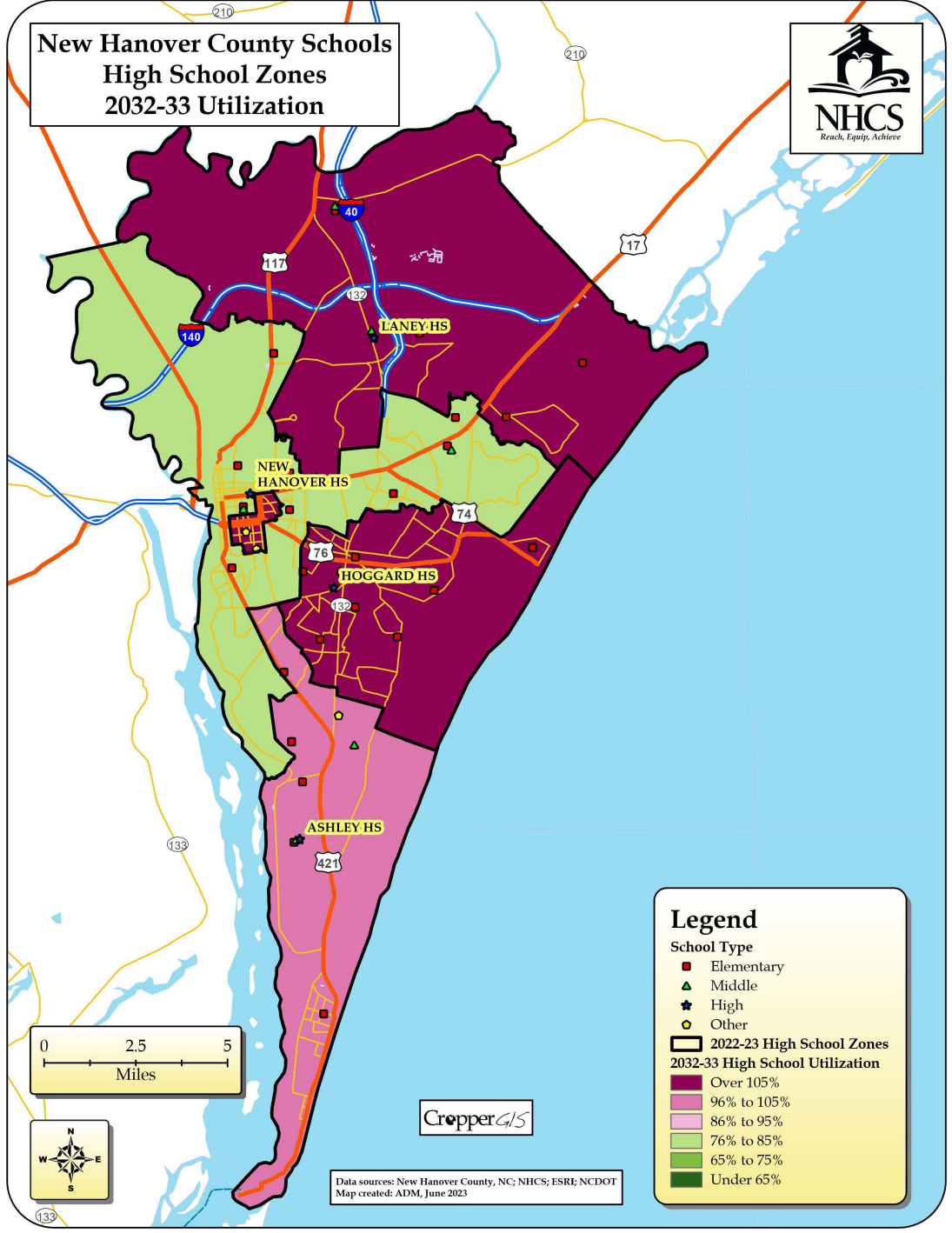
#### 2022-23 High School Zones

#### 2027-28 High School Utilization

- Over 105%
- 96% to 105%
- 86% to 95%
- 76% to 85%
- 65% to 75%
- Under 65%

# Utilization Forecast – High Schools

## New Hanover County Schools High School Zones 2032-33 Utilization



CropperGIS

Data sources: New Hanover County, NC; NHCS; ESRE; NCDOT  
Map created: ADM, June 2023

### Legend

- School Type**
- Elementary
  - ▲ Middle
  - ★ High
  - Other
- ▭ 2022-23 High School Zones
- 2032-33 High School Utilization**
- Over 105%
  - 96% to 105%
  - 86% to 95%
  - 76% to 85%
  - 65% to 75%
  - Under 65%

# Utilization Forecast Findings

- Overcrowding at all levels indicates that boundary changes alone will not resolve issues with schools.
- Capital construction will be required at all levels to address current and future overcrowding.
- The county needs to add school capacity to serve students that are already here (i.e. already overcrowded) in addition to what is forecasted for the next 10 years.
- Not an issue of building for future students, but more of an issue of building more capacity for the students that are in buildings now.

Within 10%  
 Between 10-15%  
 Over/Under15%

# School Utilization Imbalances

Elementary School	2022-23 Capacity (Without Portables)	2022-23 Capacity (With Portables)	K	1	2	3	4	5	Total Enrolled	Enrolled Utilization (Without Portables)	Enrolled Utilization (With Portables)
Alderman	294	314	49	57	39	49	48	40	282	96%	90%
Anderson	560	560	100	93	81	108	123	113	618	110%	110%
Bellamy	415	415	83	106	75	87	100	103	554	133%	133%
Blair	525	525	69	74	82	79	77	64	445	85%	85%
Bradley Creek	344	404	48	58	63	76	49	69	363	106%	90%
Carolina Beach	386	386	60	73	74	70	85	87	449	116%	116%
Castle Hayne	525	525	66	72	70	70	80	62	420	80%	80%
College Park	527	527	76	83	63	85	78	74	459	87%	87%
Forest Hills	368	416	47	57	68	57	60	64	353	96%	85%
Freeman	414	414	64	51	45	40	49	48	297	72%	72%
Holly Tree	425	425	63	61	60	84	82	77	427	100%	100%
Masonboro	456	596	105	89	115	93	100	87	589	129%	99%
Murrayville	549	649	94	95	100	95	82	89	555	101%	86%
Ogden	544	604	107	107	112	105	96	119	646	119%	107%
Pine Valley	448	528	81	68	87	77	73	83	469	105%	89%
Porter's Neck	549	549	111	138	93	90	98	93	623	113%	113%
Snipes	520	520	60	63	74	65	69	68	399	77%	77%
Sunset Park	466	526	83	62	67	65	60	63	400	86%	76%
Williams	401	441	65	76	57	63	76	62	399	100%	90%
Winter Park	294	354	51	60	49	40	41	52	293	100%	83%
Wrightsboro	481	541	83	71	67	79	80	95	475	99%	88%
Wrightsville Beach	258	258	41	41	46	48	46	43	265	103%	103%
<b>Total</b>	<b>9749</b>	<b>10477</b>	<b>1606</b>	<b>1655</b>	<b>1587</b>	<b>1625</b>	<b>1652</b>	<b>1655</b>	<b>9780</b>	<b>100%</b>	<b>93%</b>

Note: Color-coding is comparing how close each school is to the county-wide cohort average, to better understand how equitable the space use is per building compared to all space in the county.

Enrollment differs slightly between forecast utilization and these tables due to different source / point in time of the database export.

Within 10%
Between 10-15%
Over/Under15%

# School Utilization Imbalances

Middle School	2022-23 Capacity (Without Portables)	2022-23 Capacity (With Portables)	6	7	8	Total Enrolled	Enrolled Utilization (Without Portables)	Enrolled Utilization (With Portables)
Holly Shelter	991	991	248	291	323	862	87%	87%
Murray	809	889	307	279	293	879	109%	99%
Myrtle Grove	747	747	191	211	260	662	89%	89%
Noble	633	733	206	203	222	631	100%	86%
Roland-Grise	731	891	307	235	304	846	116%	95%
Trask	615	655	220	228	229	677	110%	103%
Williston	793	793	201	225	245	671	85%	85%
<b>Total</b>	<b>5319</b>	<b>5699</b>	<b>1680</b>	<b>1672</b>	<b>1876</b>	<b>5228</b>	<b>98%</b>	<b>92%</b>

High School	2022-23 Capacity (Without Portables)	2022-23 Capacity (With Portables)	9	10	11	12	Total Enrolled	Enrolled Utilization (Without Portables)	Enrolled Utilization (With Portables)
Ashley	1780	1900	482	521	449	427	1879	106%	99%
Hoggard	1788	1928	545	585	516	457	2103	118%	109%
Laney	1887	1927	606	573	507	470	2156	114%	112%
New Hanover	1678	1678	367	406	322	302	1397	83%	83%
<b>Total</b>	<b>7133</b>	<b>7433</b>	<b>2000</b>	<b>2085</b>	<b>1794</b>	<b>1656</b>	<b>7535</b>	<b>106%</b>	<b>101%</b>

Note: Color-coding is comparing how close each school is to the county-wide cohort average, to better understand how equitable the space use is per building compared to all space in the county.

Enrollment differs slightly between forecast utilization and these tables due to different source / point in time of the database export.

# Plans to address overcrowding

The findings indicate that capital construction is necessary to provide capacity relief to schools at all levels.

The next step was to develop a conceptual proof of concept model to determine if the location and size of planned capital construction can relieve schools throughout the county.

Estimates are built off 'live-in' counts within the zones.

The following is a list of capital improvements that were included when developing the proof-of-concept model:

1. New Elementary School with 525 capacity, built near Williams ES. The New ES is assumed to be paired with Williams ES, where the New ES will serve grades 3-5 and Williams ES will serve grades PK-2. Leave enough space at Williams to house a new Pre-K program.
2. Pine Valley ES rebuilt on the same site with capacity of 525 seats.
3. Porter's Neck ES expanded to 700 capacity.
4. Masonboro ES expanded to 586 capacity (130 additional seats).
5. Alderman ES expanded to 424 capacity (130 additional seats).
6. Build new MS on Sea Tech property for 1,000 capacity.
7. Use Trask MS for Laney HS, which increases Laney HS total capacity to 2,502 seats.

# Proof-of-concept: Utilization

The proof-of-concept figures are shown below and demonstrate how balance of enrollment can be achieved. In order to balance enrollment and account for the added space in the capital plan, boundaries need to be adjusted.

Elementary School	Concept Capacity (Without Portables)	Concept Grade Configuration	DRAFT Concept Live In	K	1	2	3	4	5	DRAFT Concept Estimated Enrollment	DRAFT Concept Utilization	Forecasted Enrollment Trend
Alderman	424	K-5	357	67	69	54	61	53	56	360	85%	▲
Anderson	560	K-5	562	87	87	71	98	109	114	566	101%	▲
Bellamy	415	K-5	389	67	67	46	67	85	58	390	94%	▲
Blair	525	K-5	448	79	68	86	78	71	73	455	87%	▬
Bradley Creek	344	K-5	289	43	46	47	61	40	53	290	84%	▼
Carolina Beach	386	K-5	343	50	48	63	56	61	65	343	89%	▼
Castle Hayne	525	K-5	482	78	83	82	80	96	76	495	94%	▲
College Park	527	K-5	433	64	81	62	74	74	78	433	82%	▬
Forest Hills	368	K-5	342	61	59	75	46	54	47	342	93%	▼
Freeman	414	K-5	329	58	49	51	48	57	68	331	80%	▲
Holly Tree	425	K-5	360	47	49	49	75	75	69	364	86%	▼
Masonboro	586	K-5	542	95	78	110	85	91	83	542	92%	▬
Murrayville	549	K-5	470	73	80	87	90	76	77	483	88%	▲
Ogden	544	K-5	555	92	91	98	87	87	108	563	103%	▲
Pine Valley	525	K-5	522	98	89	84	77	89	89	526	100%	▲
Porter's Neck	700	K-5	670	121	152	99	105	108	97	682	97%	▲
Snipes	520	K-5	425	62	71	67	78	78	70	426	82%	▼
Sunset Park	466	K-5	415	86	67	71	66	61	67	418	90%	▲
Williams	401	PK-1	277	119	158					277	69%	▲
New ES	525	2-5	526			125	117	141	143	526	100%	
Winter Park	294	K-5	258	37	53	48	54	29	37	258	88%	▬
Wrightsboro	481	K-5	466	85	74	67	77	77	88	468	97%	▲
Wrightsville Beach	258	K-5	242	37	36	45	45	40	39	242	94%	▬
<b>Total</b>	<b>10762</b>		<b>9702</b>	<b>1606</b>	<b>1655</b>	<b>1587</b>	<b>1625</b>	<b>1652</b>	<b>1655</b>	<b>9780</b>	<b>91%</b>	▲

# Proof-of-concept: Utilization

The proof-of-concept figures are shown below and demonstrate how balance of enrollment can be achieved. In order to balance enrollment and account for the added space in the capital plan, boundaries need to be adjusted.

Roland-Grise has a 8-classroom modular and Murray has a 4-classroom modular, which can remain to keep the schools under 100%

Middle School	Concept Capacity (Without Portables)	6	7	8	DRAFT Concept Estimated Enrollment	DRAFT Concept Utilization	Forecasted Enrollment Trend
Holly Shelter	991	247	270	298	815	82%	▲
Murray	809	277	264	268	809	100%	▼
Myrtle Grove	747	216	212	257	685	92%	▲
Noble	633	178	205	206	539	85%	▬
Roland-Grise	731	260	229	283	772	106%	▼
Trask	1000	265	267	300	882	88%	▲
Williston	793	237	225	264	726	92%	▲
<b>Total</b>	<b>5704</b>	<b>1680</b>	<b>1672</b>	<b>1876</b>	<b>5228</b>	<b>92%</b>	▲

High School	Concept Capacity (Without Portables)	9	10	11	12	DRAFT Concept Estimated Enrollment	DRAFT Concept Utilization	Forecasted Enrollment Trend
Ashley	1780	500	438	413	464	1815	102%	▼
Hoggard	1788	512	449	417	471	1849	103%	▼
Laney	2502	599	540	494	614	2308	92%	▲
New Hanover	1678	471	370	327	456	1563	93%	▼
<b>Total</b>	<b>7748</b>	<b>2082</b>	<b>1797</b>	<b>1651</b>	<b>2005</b>	<b>7535</b>	<b>97%</b>	▼

**Feeder Patterns**

Option	Elementary School Splits	Splits Less than 25%
2022-23 ES to MS Zones	12	5
DRAFT Concept	9	4

# Proof-of-concept: Feeder Patterns

The proof-of-concept demonstrates that in addition to utilization relief, feeder patterns can be better aligned for Elementary to Middle School.

2022-23 ES Zone	2022-23 MS Zone	ES Attendance
ALDERMAN ES	MYRTLE GROVE MS	25%
ALDERMAN ES	ROLAND GRISE MS	6%
ALDERMAN ES	WILLISTON MS	70%
ANDERSON ES	MURRAY MS	100%
BELLAMY ES	MURRAY MS	55%
BELLAMY ES	MYRTLE GROVE MS	45%
BLAIR ES	NOBLE MS	22%
BLAIR ES	TRASK MS	78%
BRADLEY CREEK ES	ROLAND GRISE MS	100%
CAROLINA BEACH ES	MURRAY MS	100%
CASTLE HAYNE ES	HOLLY SHELTER MS	59%
CASTLE HAYNE ES	TRASK MS	41%
COLLEGE PARK ES	NOBLE MS	50%
COLLEGE PARK ES	WILLISTON MS	50%
FOREST HILLS ES	MYRTLE GROVE MS	18%
FOREST HILLS ES	WILLISTON MS	82%
FREEMAN ES	HOLLY SHELTER MS	100%
HOLLY TREE ES	ROLAND GRISE MS	100%
MASONBORO ES	MYRTLE GROVE MS	37%
MASONBORO ES	ROLAND GRISE MS	63%
MURRAYVILLE ES	TRASK MS	100%
OGDEN ES	HOLLY SHELTER MS	18%
OGDEN ES	NOBLE MS	82%
PINE VALLEY ES	MYRTLE GROVE MS	37%
PINE VALLEY ES	ROLAND GRISE MS	37%
PINE VALLEY ES	WILLISTON MS	26%
PORTERS NECK ES	HOLLY SHELTER MS	100%
SNIPES ES	WILLISTON MS	100%
SUNSET PARK ES	WILLISTON MS	100%
WILLIAMS ES	MYRTLE GROVE MS	100%
WINTER PARK ES	ROLAND GRISE MS	63%
WINTER PARK ES	WILLISTON MS	37%
WRIGHTSBORO ES	HOLLY SHELTER MS	100%
WRIGHTSVILLE BEACH ES	NOBLE MS	100%

ES DRAFT Concept	MS DRAFT Concept	ES Attendance
ALDERMAN ES	MYRTLE GROVE MS	27%
ALDERMAN ES	ROLAND GRISE MS	22%
ALDERMAN ES	WILLISTON MS	51%
ANDERSON ES	MURRAY MS	100%
BELLAMY ES	MURRAY MS	100%
BLAIR ES	TRASK MS	100%
BRADLEY CREEK ES	ROLAND GRISE MS	100%
CAROLINA BEACH ES	MURRAY MS	100%
CASTLE HAYNE ES	HOLLY SHELTER MS	63%
CASTLE HAYNE ES	TRASK MS	37%
COLLEGE PARK ES	NOBLE MS	100%
FOREST HILLS ES	WILLISTON MS	100%
FREEMAN ES	HOLLY SHELTER MS	100%
HOLLY TREE ES	ROLAND GRISE MS	100%
MASONBORO ES	MYRTLE GROVE MS	35%
MASONBORO ES	ROLAND GRISE MS	65%
MURRAYVILLE ES	TRASK MS	100%
OGDEN ES	NOBLE MS	100%
PINE VALLEY ES	MYRTLE GROVE MS	24%
PINE VALLEY ES	ROLAND GRISE MS	30%
PINE VALLEY ES	WILLISTON MS	45%
PORTERS NECK ES	HOLLY SHELTER MS	74%
PORTERS NECK ES	TRASK MS	26%
SNIPES ES	MYRTLE GROVE MS	14%
SNIPES ES	WILLISTON MS	86%
SUNSET PARK ES	WILLISTON MS	100%
WILLIAMS ES	MYRTLE GROVE MS	100%
WINTER PARK ES	ROLAND GRISE MS	84%
WINTER PARK ES	WILLISTON MS	16%
WRIGHTSBORO ES	HOLLY SHELTER MS	100%
WRIGHTSVILLE BEACH ES	NOBLE MS	100%

# Proof-of-concept: Feeder Patterns and Estimated Students Moved

Feeder Patterns		
Option	Middle School Splits	Splits Less than 25%
2022-23 MS to HS Zones	8	6
DRAFT Concept	4	1

The proof-of-concept demonstrates that in addition to utilization relief, feeder patterns can be better aligned for Middle School to High School.

2022-23 MS Zone	2022-23 HS Zone	MS Attendance
HOLLY SHELTER MS	LANEY HS	85%
HOLLY SHELTER MS	NEW HANOVER HS	15%
MURRAY MS	ASHLEY HS	100%
MYRTLE GROVE MS	ASHLEY HS	70%
MYRTLE GROVE MS	HOGGARD HS	29%
MYRTLE GROVE MS	NEW HANOVER HS	1%
NOBLE MS	HOGGARD HS	14%
NOBLE MS	LANEY HS	44%
NOBLE MS	NEW HANOVER HS	42%
ROLAND GRISE MS	HOGGARD HS	100%
TRASK MS	LANEY HS	76%
TRASK MS	NEW HANOVER HS	24%
WILLISTON MS	ASHLEY HS	8%
WILLISTON MS	HOGGARD HS	19%
WILLISTON MS	NEW HANOVER HS	73%

MS DRAFT Concept	HS DRAFT Concept	MS Attendance
HOLLY SHELTER MS	LANEY HS	50%
HOLLY SHELTER MS	NEW HANOVER HS	50%
MURRAY MS	ASHLEY HS	100%
MYRTLE GROVE MS	ASHLEY HS	72%
MYRTLE GROVE MS	HOGGARD HS	28%
NOBLE MS	LANEY HS	65%
NOBLE MS	NEW HANOVER HS	35%
ROLAND GRISE MS	HOGGARD HS	100%
TRASK MS	LANEY HS	100%
WILLISTON MS	HOGGARD HS	17%
WILLISTON MS	NEW HANOVER HS	83%

The proof-of-concept does require movement of students to balance enrollment and utilization. It is estimated that any plan will impact approximately:

- 1,500 elementary school students
- 350 middle school students
- 950 high school students

# Proof-of-concept: Summary

The proof-of-concept demonstrates that all of the planned capacity additions/new construction within New Hanover County Schools will be needed to address overcrowding at all levels.

Even with new/added construction, the district will still be operating near 100% of utilization, suggesting that the planned space is still a conservative and an aggressive plan.

The district's plan will leverage all existing and planned space efficiently without much extra.

The added space that is being planned is really intended to serve students who are here already in New Hanover County Schools, and it is not a 'build it and they will come' type of plan. Not planning for the future only, but mostly planning for the NOW.

# School Facility Utilization Study Findings

Questions?