

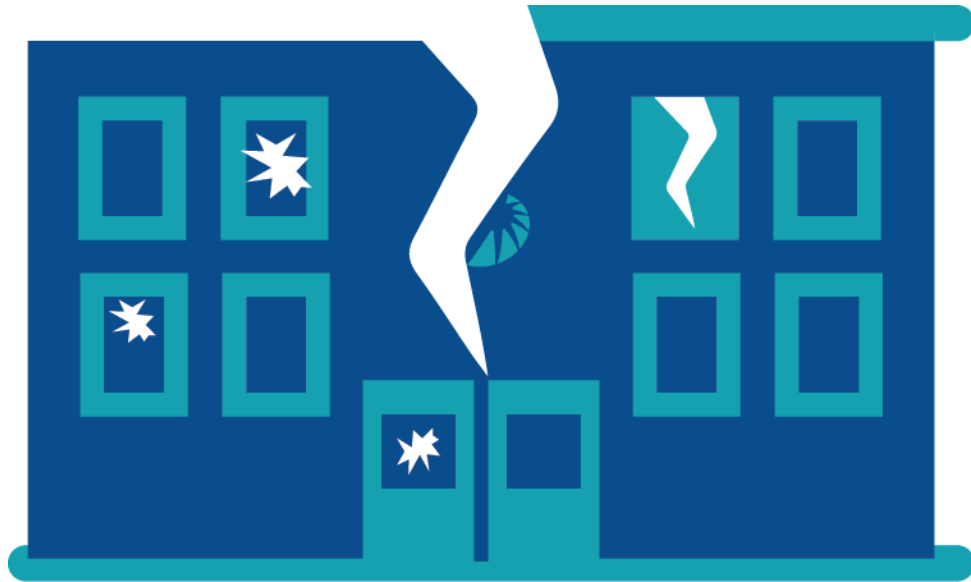


SCHOOL BOND UPDATE OPENING OF NEW SCHOOLS

November 14, 2023 | Guilford County Board of Education

WHITNEY OAKLEY, ED.D. | SUPERINTENDENT

Facilities Master Plan Findings



An **independent study** funded jointly by the commissioners and school board in 2019 found that district **schools were**, in some cases, **literally falling apart.**

The **study** rated more than **50%** of our **schools** as being in **poor or unsatisfactory condition** with outdated systems for heating and cooling, electrical and wiring, plumbing, technology and other critical infrastructure needs.

The 2019 Facility Master Plan called for a \$2.6B+ investment over 10-15 years



The plan recommended:

- ❑ Rebuilding **22** schools on existing sites;
- ❑ Fully renovating **19** schools;
- ❑ Prioritizing major repairs at **56** schools;
- ❑ Constructing **7** new schools on new sites and constructing new additions at **3** schools to alleviate overcrowding;
- ❑ Closing **13** school buildings and **11** administrative buildings.
- ❑ Upgrading safety and security at **100%** schools;
- ❑ Upgrading technology at **100%** schools; and
- ❑ Eliminating mobile classrooms districtwide;

Rebuilding **22** schools on existing sites

Allen Jay ES	Bessemer ES	Brooks Global Studies ES	Claxton ES	Foust ES	Frazier ES
Irving Park ES	Jackson 6-12 Prep Academy	Joyner ES	Kirkman Park ES	Kiser MS	Millis Road ES
Montlieu ES	Morehead ES	Northwood ES	Page HS	Peck K-8	Southern HS
	Sternberger ES	Vandalia ES	Washington K-8	Weaver Academy (McIver Site)	

*From 2019 Facilities Master Plan

Fully renovating 19 schools

DH Newcomers School (Academy at Smith Site)	Allen MS	Alternative Programs (Weaver Site)	Andrews HS	Erwin Montessori (Archer Site)
General Greene ES	Grimsley HS	High Point Central HS	Jones K-8 (with addition)	Lincoln Academy 4-8
Early College HS Leadership Academy 6-12 (Swann site)	Northeast HS	Parkview Village ES	Penn Griffin 6-12 VPA	Sedgefield ES
Shadybrook ES	Smith HS	Welborn/Kearns 6-12	Western HS	

*From 2019 Facilities Master Plan

Prioritizing major repairs at 56 schools

Alamance ES	Alderman ES	Allen Jay Prep Academy	Bluford STEM Academy	Brightwood ES	Colfax ES	Dudley HS	Eastern HS	Eastern MS
Fairview ES	Falkener ES	Ferndale MS	Florence ES	Gateway Education Center	Gibsonville ES	Gillespie Park ES	Guilford ES	Hairston MS
Haynes Inman Education Center	Herbin Metz Education Center	Jamestown ES	Jamestown MS	Jefferson ES	Jesse Wharton ES	Johnson Street ES	Joyner Greene Education Center	Kernodle MS
McNair ES	Mendenhall MS	Monticello Brown Summit ES	Nathanael Greene ES	Northeast MS	Northern ES	Northern HS	Northern MS	Northwest HS
Oak Ridge ES	Oak View ES	Pearce ES	Pilot ES	Pleasant Garden ES	Ragsdale HS	Rankin ES	Reedy Fork ES	Sedalia ES
Simkins ES	Southeast HS	Southeast MS	Southern MS	Southwest ES	Southwest HS	Southwest MS	Stokesdale ES	Summerfield ES
				Triangle Lake ES	Union Hill ES			

*From 2019 Facilities Master Plan

Constructing 7 new schools on new sites and additional capacity

New elementary school in the Northern HS Feeder

New elementary school to replace Southern ES and Sumner ES

New Hampton/Peeler K-5 Visual & Performing Arts Magnet

New 6-12 Preparatory Academy

New northwest area aviation HS magnet

New replacement middle school for Northwest MS

New K-8 in the Southwest HS area

*From 2019 Facilities Master Plan

Closing 13 school buildings and 11 administrative buildings

Brown Summit MS	Cone ES	Doris Henderson Newcomers School	Erwin Montessori	Hampton ES	Madison ES
Murphey ES	Oak Hill ES	Peeler ES	SCALE Greensboro/Twilight	Southern ES	Sumner ES
Wiley ES	Merritt Drive Annex (admin)	Prescott Street Tech Department (admin)	Lees Chapel (admin)	Franklin Blvd (admin)	Franklin Blvd/Moen Transportation (admin)
Eugene Street (admin)	Laughlin Professional Center (admin)	Psychological Services (admin)	Market Street (admin)	Grimes Ave Warehouse (admin)	Naco Road maintenance (admin)

*From 2019 Facilities Master Plan



Looking forward to the numerous possibilities to support our public schools, Guilford County voters have taken an important step to launch our school district into the 21st century by approving a historic \$2 billion investment in our facilities.



What has changed since 2019?

Most Deadly Pandemic in 100 Years

- The Covid-19 pandemic has disrupted every area of our lives from teaching and learning to the labor workforce.

Labor Shortages

- The US and NC have seen the lowest unemployment rate in decades.

Supply Chain Challenges

- Longer lead times leading to longer construction durations and higher costs
- Uncertainty of material and equipment availability
- Manufacturers not honoring fixed-price contracts

Economic Growth & Construction Activity in North Carolina:

- School Bond Projects
- Municipal
- Multi-unit Residential
- Large Private Non-Residential Developments

Active Comprehensive Projects

Comprehensive Bond Projects

PROJECT	PHASE	PROJECTED OCCUPANCY
Claxton ES	Construction	August 2024
→ Foust ES	Construction	January 2025
Brooks Global ES	Construction	January 2025
Kiser MS	Construction	January 2025
→ Peck K-8	Construction	January 2025
Visual & Performing Arts ES*	Pre-Construction	TBD
Katherine G Johnson K-8	Land Acquisition/Planning	TBD
→ Erwin Montessori (at former Archer ES)	Planning	TBD
Sternberger ES	Planning	TBD
Allen Jay ES	Planning	TBD

Comprehensive Bond Projects (continued)

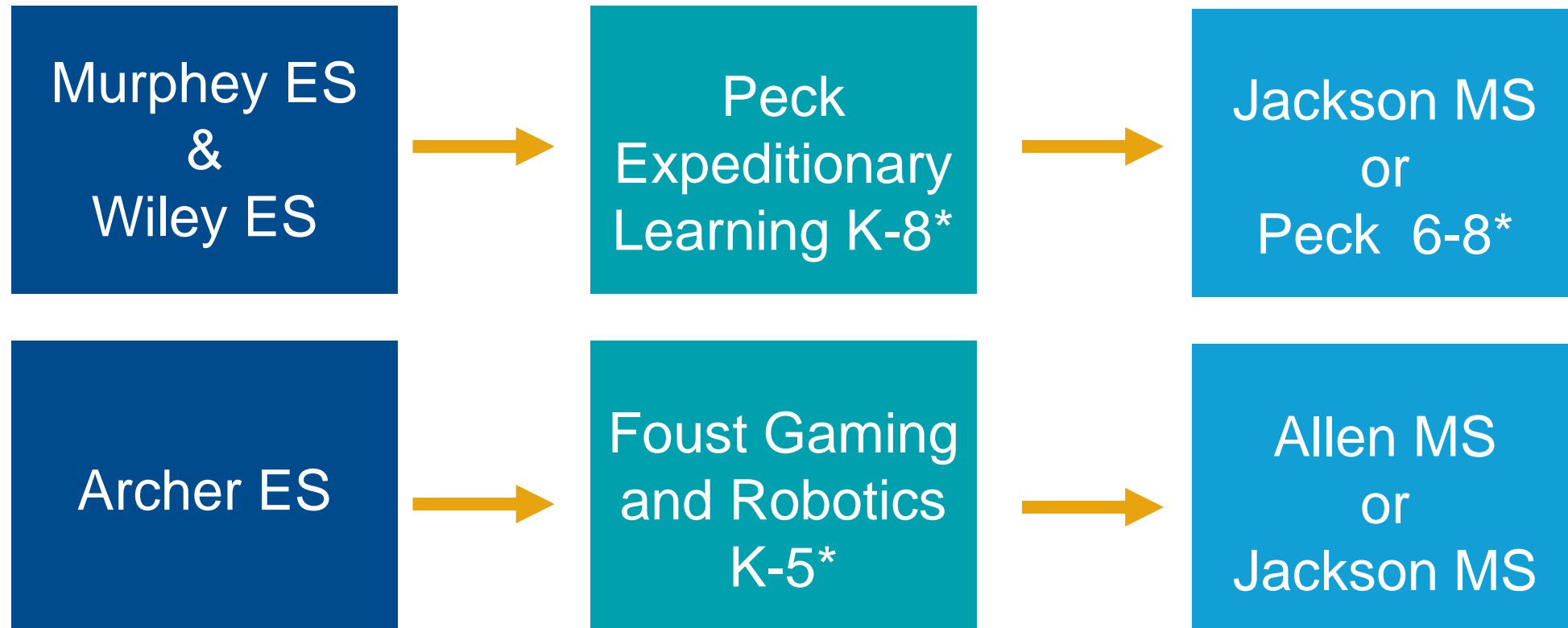
PROJECT	Phase	PROJECTED OCCUPANCY
Sumner ES	Planning	TBD
 Swann 6-12	Planning	TBD
Lindley K-5	Planning	TBD
Northwood ES	Planning	TBD
Shadybrook ES	Planning	TBD
Northwest MS New Site	Land Acquisition/Planning	TBD
Joyner ES	Planning	TBD
Vandalia ES	Planning	TBD
Bessemer ES	Planning	TBD
Millis Road ES	Planning	TBD
Maintenance/Transportation Facility	Planning	TBD



GCS IS READY
TO OPEN 5 NEW SCHOOLS
IN 2024-2025 SCHOOL YEAR

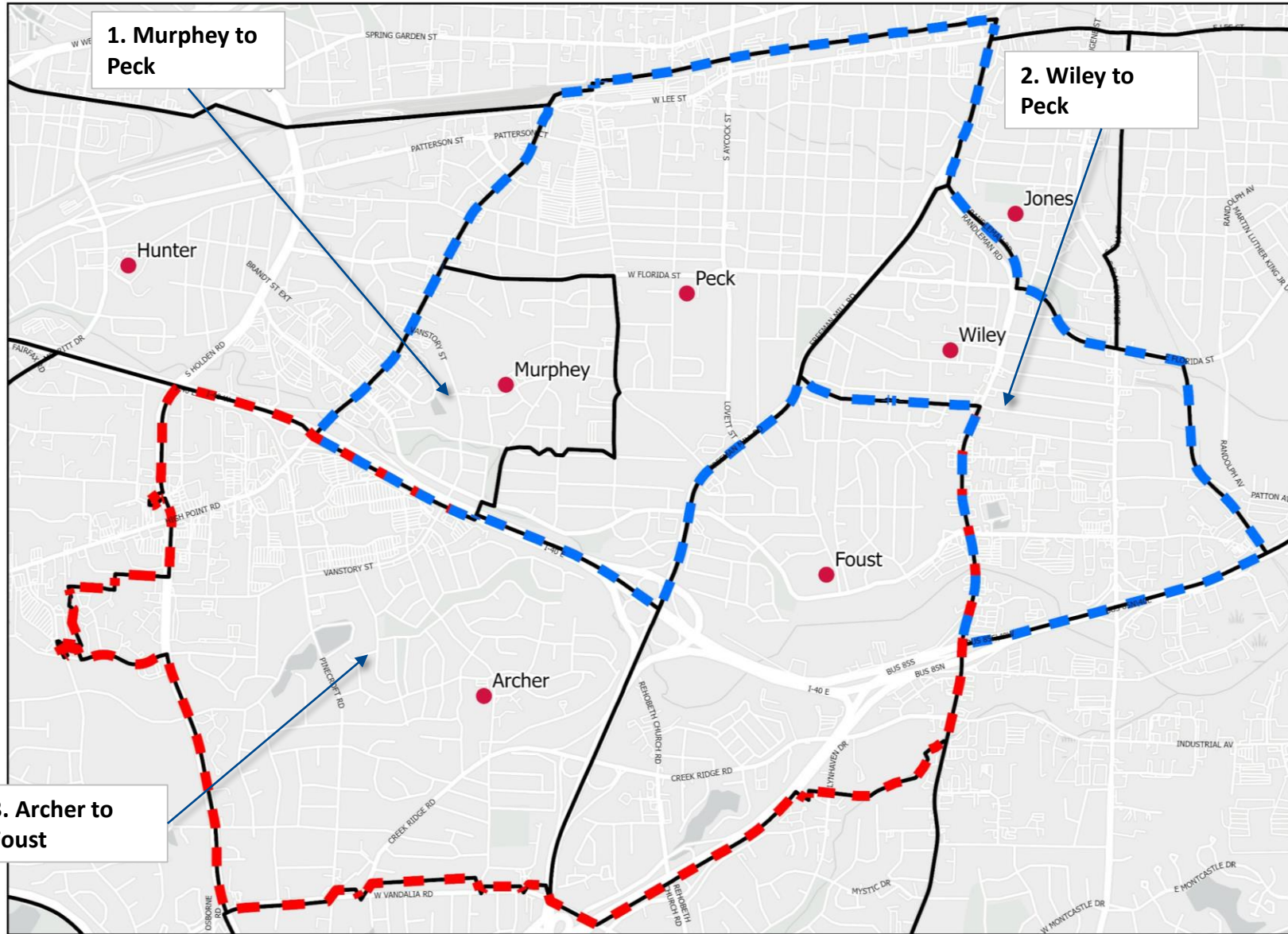
Proposed Attendance Boundary Changes

Wiley, Murphey, Archer, Peck and Foust



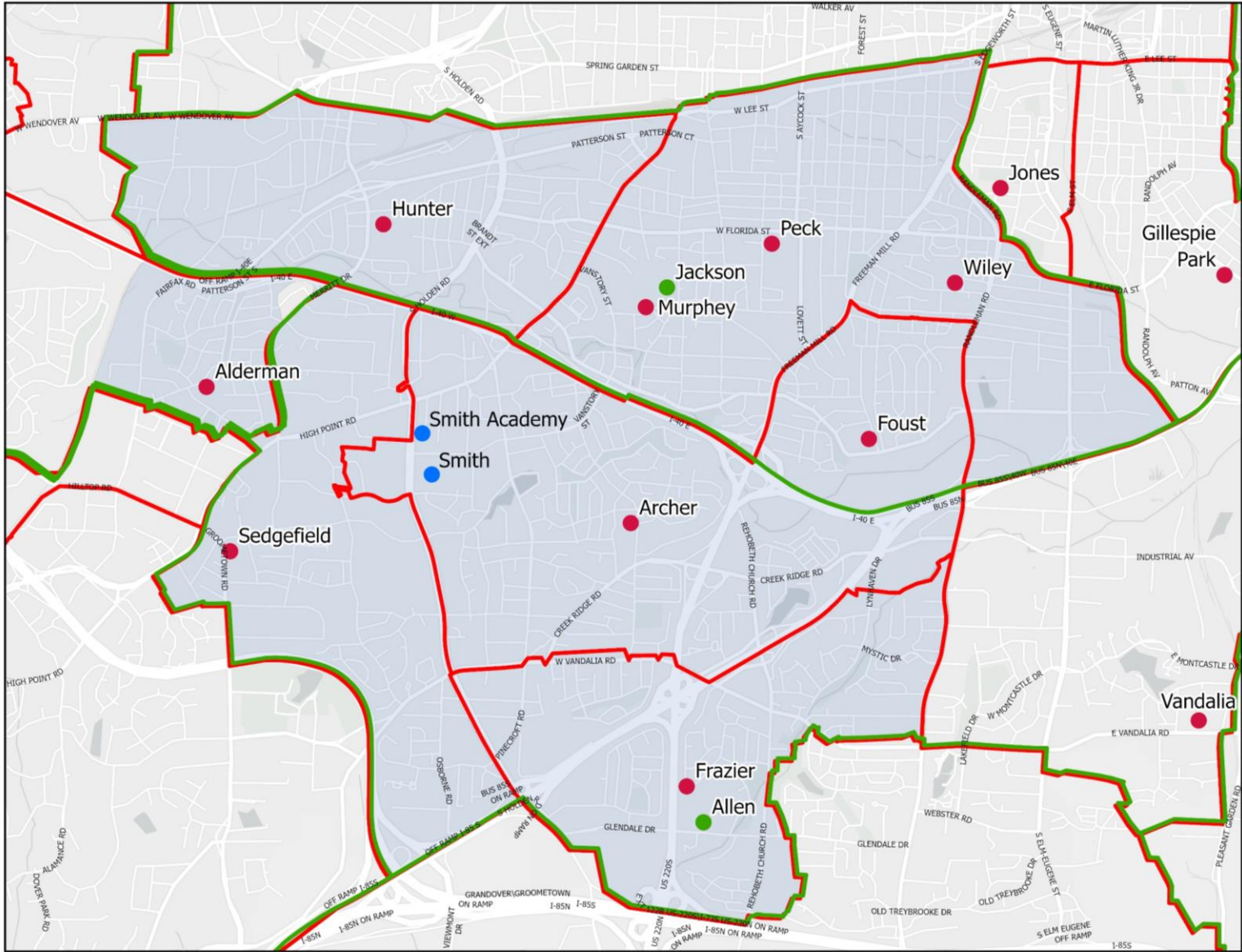
* Students attending the Smith High Attendance Zone will be given admission preference.

Proposed Murphey and Wiley Boundaries Merged with Peck Boundary & Archer Boundary Merged with Foust Boundary



Comments:

1. Timing of shift needs to coordinate with Peck and Foust construction project completions
2. Opens Wiley for Erwin
3. Opens Murphey for swing space
4. Frees Archer for renovation or new construction



Proposed Murphey and Wiley Boundaries Merged with Peck Boundary & Archer Boundary Merged with Foust Boundary

- Elementary School Sites
- Middle School Sites
- High School Sites
- ▭ Elementary School Attendance Zones
- ▭ Middle School Attendance Zones
- ▭ Smith High School

Changes for Erwin Montessori

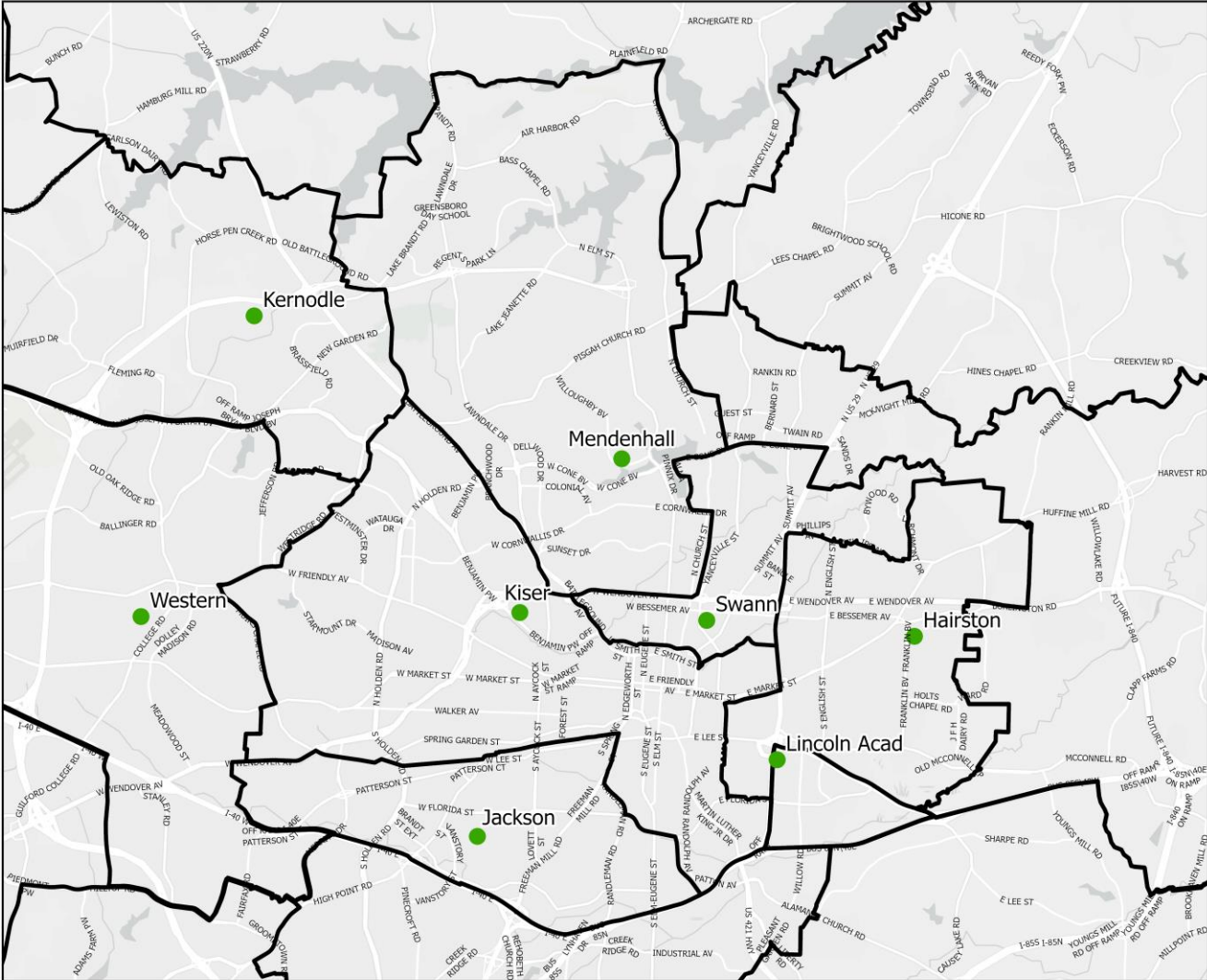


Erwin
Montessori

Former
Wiley ES
Campus

New
Montessori
School
at former
Archer ES
Campus

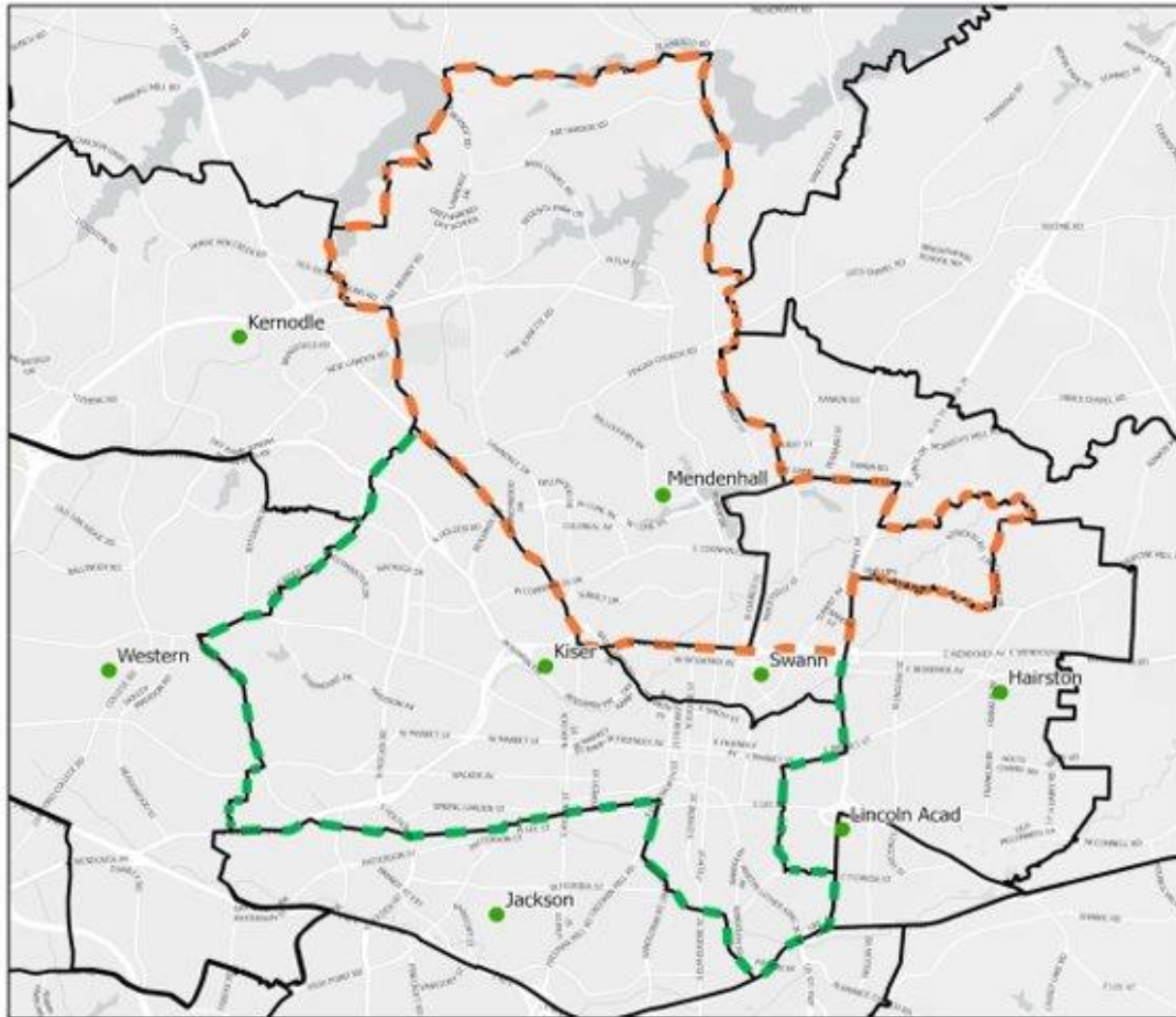
Existing Swann MS Boundary



- Middle School Sites
- ▭ Middle School Attendance Zones



Proposed Swann MS Boundary Change



Summary

Recommended boundary changes

- Close Archer, Murphey, Wiley, Swann as they are currently constituted
- Reassign elementary students to Peck and Foust, and middle school students to Mendenhall and Kiser
- Repurpose Murphey and Wiley as swing space
- Allow Archer and Swann projects to begin

Next Steps



**BOE Holds
Public
Hearings**
for Consolidation
and School
Closures on
December 12, 2023



**Student
Enrollment**
update projections
for next 10 years



**Academic
Programs
Alignment**
for all three school
levels to provide
families with continuous
and consistent
pathways from
Kindergarten through
12th grade



**Integrate
Academic
Pathways**
for programs into
capital improvement
projects, so we are
productive in the design
and construction of
appropriate learning
environments

Questions & Dialogue

