

About Moreland University








Mission: Teach teachers around the world to be resourceful problem solvers and tech-savvy educators through an online, collaborative, activity-based learning system designed for tomorrow's students in a dynamic and diverse world.





Overview

-  1. Milestones, Impact & Case Study
-  2. Footprint & Accreditation/Regulatory Approvals
-  3. Program Offerings & Learning Platform
-  4. Tuition & State Licensure
-  5. Next Steps



Milestones, Impact & Case Study

 Moreland University



Moreland University Milestones

Founded

The innovative online TEACH-NOW® Teacher Preparation Certificate Program was initiated under the National Center for Education Information and founded by Dr. C. Emily Feistritzer with support from New Schools Venture Fund in November 2011.



2011

Master's Program

We added Master's in Education Degree programs and built need-specific learning modules for Professional Development.

2016

Company Acquired

Moreland University is acquired by Colibri Group, a professional education company with leading brands that provide learning solutions to licensed professionals. We now continue our work as Moreland University within Colibri.



2021

2020

Name Change

In July of 2020, we requested—and were granted—a name change to Moreland University. This name was chosen to honor our founder's grandmother, mother, and aunt, all of whom were teachers in one-room schoolhouses near Moreland, Kentucky.



First Cohort

In February 2013, our 9-month, 8-module teacher preparation program was approved by the District of Columbia Office of the State Superintendent of Education (OSSE) to lead to a full, regular, 4-year renewable teaching license, which is recognized through reciprocity in most states. One month later, our first 10-person cohort was launched.

2013

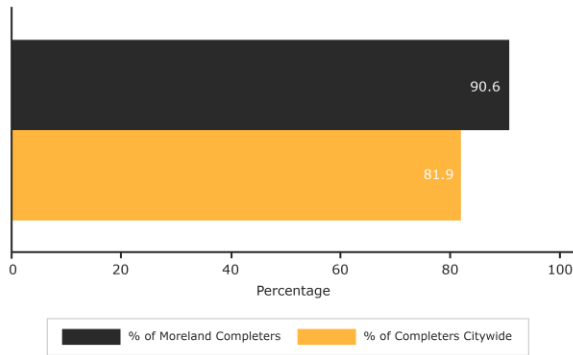
Today

Moreland University has enrolled nearly 8,000 candidates in 165 countries. Our flagship teacher certification preparation program, TEACH-NOW, prepares teachers to become resource-rich facilitators of learning with next-generation tools and technology while they earn their teaching credentials. As a post-baccalaureate institute of higher education, Moreland University is accredited by DEAC, CAEP and regulated by HELC.

2023

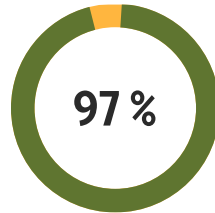
Moreland University Impact

Effectiveness Ratings of Moreland University Graduates as Teachers vs Citywide Teachers Employed in DC

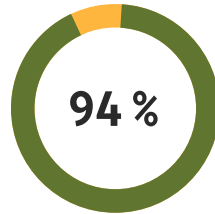


Moreland University reviews teacher effectiveness ratings as a data source to show completers apply the professional knowledge, skills, and dispositions gained in their preparation. More DC supervisors rated Moreland completers employed as first-year teachers as effective or higher compared to citywide completers.

Satisfaction of Schools Employing Moreland University Graduates as Teachers

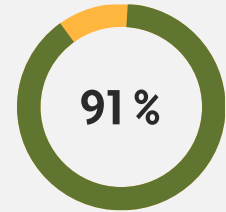


of supervisors reported that graduates had a positive impact in the profession.

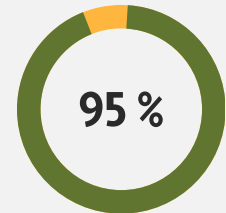


of supervisors reported satisfaction with graduates using a wide range of teaching skills and specifically with promoting students' achievement of content standards.

Moreland University Candidate Retention Rates



Retention Rates of Certification Candidates



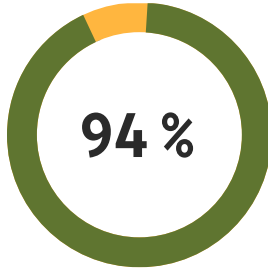
Retention Rates of Master's Candidates

According to District of Columbia Office of the State Superintendent of Education (OSSE) Educator Preparation Provider Reports in 2021 and 2022

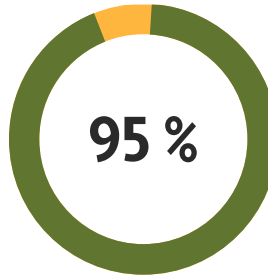


Moreland University Impact

Passing the State Licensure Exams is an important part of the process to earn a U.S. teaching license.



of Moreland's candidates are very satisfied with their course work.



of Moreland's graduates pass the Praxis Tests in the first attempt.

Support:

- Curriculum that aligns with required skills
- Application of knowledge for stronger retention
- Dedicated Program Advisor
- Free Test Prep with practice tests and study guides



Case Study – Montgomery County PS, Maryland

December 2022 - MCPS and Moreland launched a partnership to support **conditionally certified teachers** to complete Moreland’s 24-graduate credit Teacher Preparation Program or one of Moreland’s Master’s Degrees that leads to state certification in Maryland.

July 2023 - By this time, just **over 95 conditionally certified teachers from MCPS were enrolled** at Moreland and on their successful journey to their Maryland Standard Professional Certificate.

I have found Moreland’s program to be rigorous and the curriculum holds a high standard for our teachers to be effectively prepared to enter the classroom. All the staff at Moreland have been collaborative and very easy with whom to work. We have regular meetings to assess progress and provide information sessions to our educators. The Moreland staff is timely in their communications and very responsive to our needs.

We have found Moreland University’s Teacher Certification Program to be an excellent fit for our educators to receive the needed training and certification in the state of Maryland.

Brittany Mackel
Instructional Specialist, Higher Education Partnerships
Office of Human Resources and Development

Maryland’s Largest School District

MONTGOMERY COUNTY PUBLIC SCHOOLS

Expanding Opportunity and Unleashing Potential



Brittany Mackel,
Instructional Specialist MCPS

Dr. Susanne H. Thompson,
Moreland University President



Case Study – Continued

Maryland's Largest School District

MONTGOMERY COUNTY PUBLIC SCHOOLS

Expanding Opportunity and Unleashing Potential

I think the Moreland program has everything that teachers use - pedagogy, classroom standards, lesson planning, collegial connections and more. Moreland's program is a great blend of instruction that blends seamlessly into real world experience.

MCPS Teacher – Todd Berman
Middle School Science Teacher, Cabin John MS, 2022

Moreland Provides:

- Monthly Zoom-based information sessions
- Digital flyers and helpful information for MCPS Staff
- Bi-weekly partnership meetings to focus on the progress, impact, and quality of the MCPS educators
- Quarterly status reports
- Dedicated staff to support MCPS HR staff and enrolled teachers

Flexible and Frequent Start Dates for MCPS

Program Start Date	Breaks	Program End Date
August 5 or 7	December 24 – January 6	April 28, 2024
September 2, 4, 23, or 25	December 24 – January 6	May & June 2024
October – December Starts	December 24 – January 6	Complete Modules 1-6 by Summer of 2024 and complete Clinical Practice in Fall of 2024

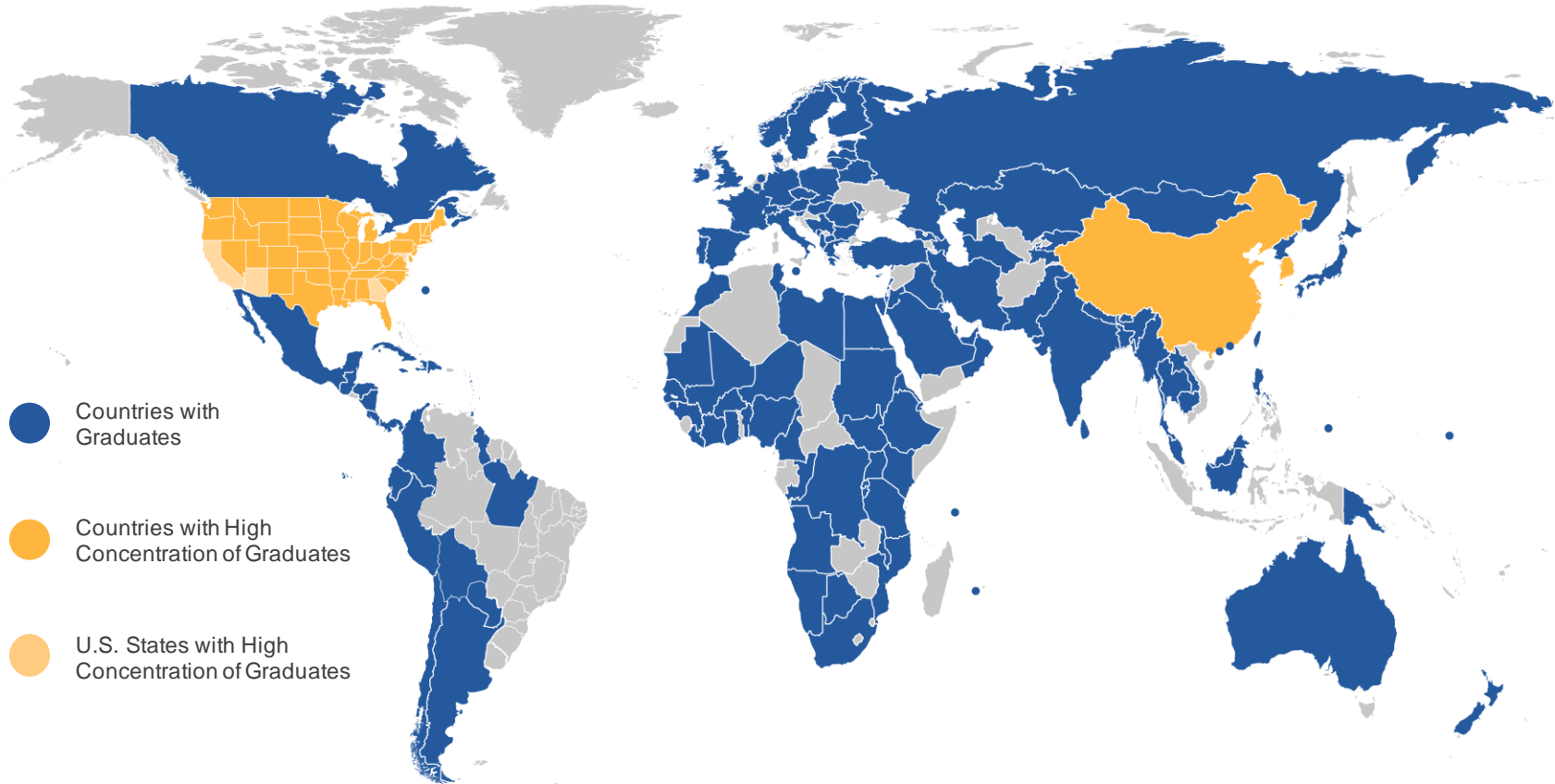


Footprint & Accreditation

 Moreland University

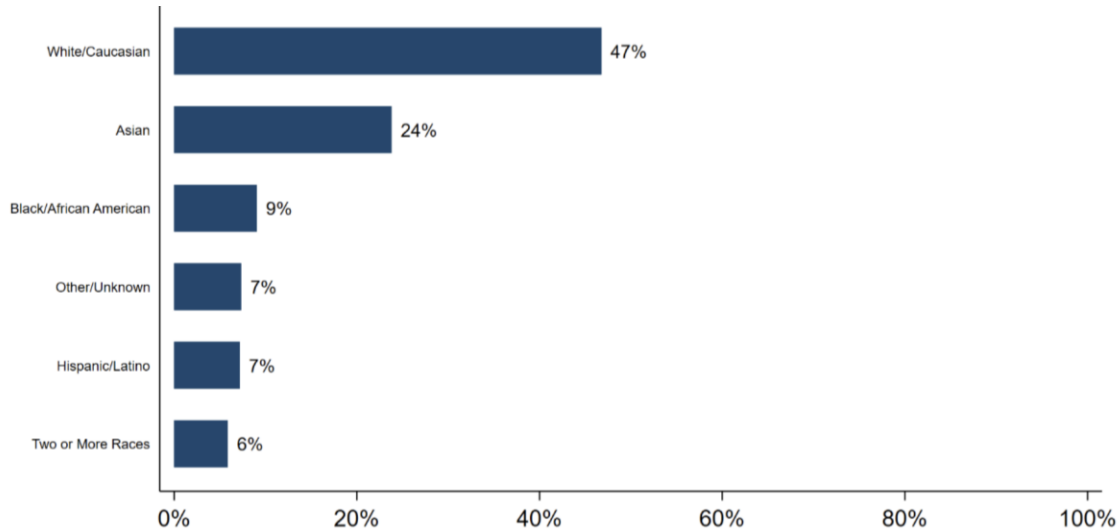


Moreland University Footprint



Moreland University Footprint

The charts below represent the racial or ethnic breakdown of Moreland's Graduates during FY 2021 and 2022. The second chart represents faculty.



Race or Ethnicity	Faculty Count	Faculty Percentage
African American/Black	22	21%
American Indian/Alaskan	0	0%
Asian	4	4%
Hispanic/Latino	5	5%
Pacific Islander	0	0%
White	73	68%
Two or More	0	0%
Other	2	2%
Unknown	1	1%
TOTAL	107	

Note: 2023 Candidate and Faculty data will be reported using updated categories:

Ethnicity - Hispanic or Latino, Not Hispanic or Latino, Unknown

Race - American Indian/Alaskan Native, Asian, Black/African American, Pacific Islander/Native Hawaiian, White, Two or More Races, Other/Unknown/Not Reported



Accreditation & Regulatory Approvals



Council for the Accreditation of Educator Preparation

CAEP is the principal accrediting body for schools of education in the United States. We were the first online program to be accredited by CAEP.



Distance Education Accrediting Commission

Accredited by the Distance Education Accrediting Commission. The Distance Education Accrediting Commission is listed by the U.S. Department of Education as a recognized accrediting agency. The Distance Education Accrediting Commission is recognized by the [Council for Higher Education Accreditation \(CHEA\)](#). [You can find our DEAC Student Achievement Disclosure form here.](#)



The Higher Education Licensure Commission

The Higher Education Licensure Commission ("HELIC", the "Commission") is a Five-Member Mayoral appointed regulatory, consumer protection authority. They are responsible for ensuring quality education in the District of Columbia.



National Council for State Authorization Reciprocity Agreements

The National Council for State Authorization Reciprocity Agreements authorizes program providers to operate across state lines.



TEACH-NOW Teacher Preparation Certificate Program

 Moreland University



TEACH-NOW Teacher Preparation Certificate Program



**District Cohorts
Start Dates**
Each Month



**One Weekly Virtual
Class – 60 minutes**
PLC – Cohort Model



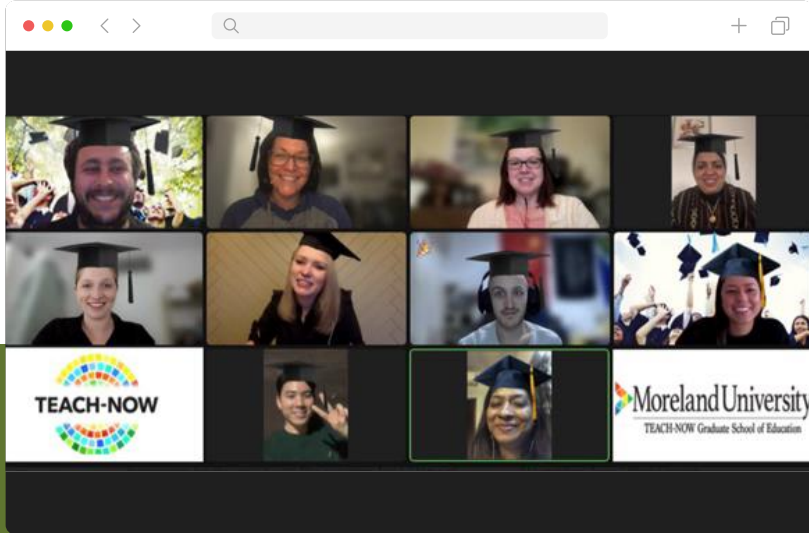
Clinical Practice
Modules 7-8 | 14 Weeks
School Mentor Assigned

Module 1 1.0 credit	Program Orientation (1 week)	Module 4 3.0 credits	Managing the Learning Environment (6 weeks)	Module 7 1.0 credit	Introduction to Clinical Practice (2 weeks)
Module 2 2.0 credits	The Culture of Schooling (3 weeks)	Module 5 3.0 credits	Student Assessments (4 weeks)	Module 8 8.0 credits	Teaching Practice and Proficiency (Clinical Practicum – 12 weeks)
Module 3 3.0 credits	The Learner & Learning in the Digital Age (4 weeks)	Module 6 3.0 credits	Planning & Preparation for Learning (4 weeks)	GRADUATION!	

Eight (8) Learning Modules over 9 months = 24 Graduate Credits



Clinical Practice, Student Teaching Experience & Candidate Support



GOAL: Develop skills to be a reflective practitioner and a strong growth mindset

Collaborate with Mentor Teacher

- Work with a mentor teacher at your school that models exemplary teaching, coaches you through the application of your knowledge and skills and supports your development

Faculty Support

- Instructor gives narrative, comprehensive feedback and personalized support while evaluating performance

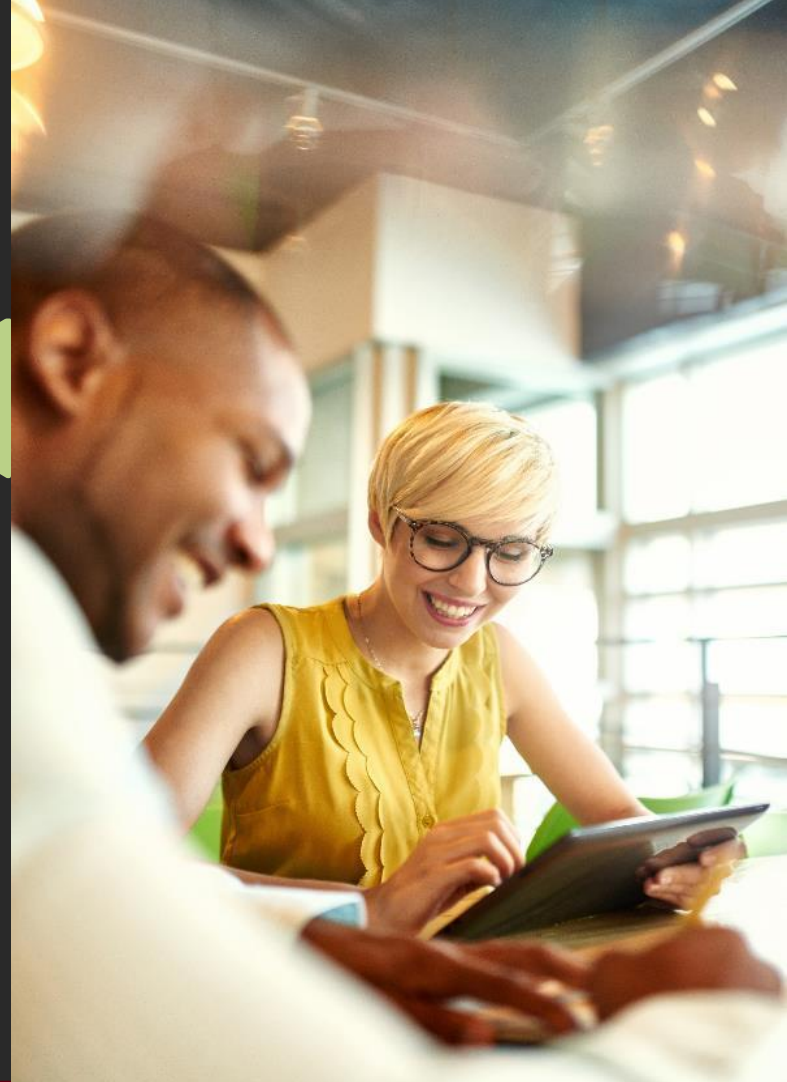
Support Services

- Dedicated Program Advisor
- Free Praxis Test Support
- Clinical Experience Mentoring



Master's Degrees

 Moreland University



Master's Degrees

Includes the Teacher Preparation Certification:

1. [Early Childhood Education](#)
2. [Special Education](#)
3. [Teaching Multilingual Learners](#)
4. [Globalization in Education](#)
5. [Educational Technology](#)
6. [Educational Research](#)

Stand-alone Master's in Education Degrees

1. [Educational Leadership](#)
2. [Research & Globalization](#)

Master's Degree Programs

- 39-41 Credits
- 12-months in length
- Cohort-Based Learning Model
- Weekly Virtual Class
- Direct learning with faculty



Learning Platform

The screenshot displays a comprehensive learning platform interface. On the left is a navigation sidebar with options: Home, Learn, Grades, Discussion Forum, Library, Clinical, Certification, Community Forum, Video Library, and Chat. The main content area is titled 'CERT Module 8: Teaching Practice and Proficiency' and includes a 'Class Schedule' with six units, each with a date range and a score (e.g., Unit 1: Feb 05 - Feb 11, score 3.23). A 'Virtual Classroom' section lists recordings for 'MED 08/2021 COHORT 2 - MODULE 8 VC' with dates and chat options. Below this is a 'Performance' section with a bar chart showing scores for modules 18 through 8, with a legend for Complete (green), Incomplete (red), Open (orange), and Submitted (blue). On the right, a 'NOTIFICATION' panel shows alerts such as 'Jane 5916 has evaluated Activity 1: Peer Review of Video Lessons for...' and 'Jane 13788 replied to Case Study and Standard lesson link...'.

Benefits

- User Friendly
- 24/7 Access
- Lifetime access for Graduates
- Video library of best practices



Tuition & Licensure

 Moreland University



Tuition

Certification Program: \$6,500

- 24-graduate credits and a 9-month program
- \$271/credit



Tuition Cost and Payment Options

M.Ed. Programs with Certification: \$14,000

- 39-graduate credits and a 12-month program
- \$359/credit

There are NO additional costs or fees for Moreland

Payment Options

- Direct bill to school district or paying entity
- Split bill: Partial to school district and partial to candidate enrolled at Moreland
- Direct bill to candidate enrolled at Moreland
- Payments Plans over 9-12 months of programs, accept multiple forms of payment



Questions & Further Dialog

THANK YOU!



Dr. Susanne H. Thompson – President
Susanne@Moreland.edu
240.701.6871

