



**OFFICE OF THE STATE SUPERINTENDENT**

North Carolina Department of Public Instruction

**August SBE**  
***State Superintendent Catherine Truitt***

August 1, 2024

# Amplify: Dibels 8

- NC Statewide Formative Diagnostic Reading Screener administered to all eligible NC K-3 students
  - Subcomponents aligned to SoR (short, timed measures)
  - Face to Face administration
  - Three benchmarks
- Data Analysis:
  - Adjust and differentiate instructional support
  - Enhance learning or support gaps (potential risks)
  - Progress monitor and adjust in real time

# Implementation Highlights

- Continued commitment to **assessment fidelity**
  - 97% completion
  - Increased use of Lectura statewide
- Schools making **connections among EPSA initiatives**
  - ELS driving implementation
  - Early literacy assessment + **SoR** based instruction
- Overall **increases** in students **at and above benchmark** and **decreases** in students **well below benchmark**



Continued  
Momentum

Amplify.



# The reach of NCDPI and Amplify's partnership...



**438,949**  
students assessed



**13,905**  
assessed in Spanish

Amplify.



# Performance Trends

National Comparisons



# Nation vs. NCDPI



National User Base



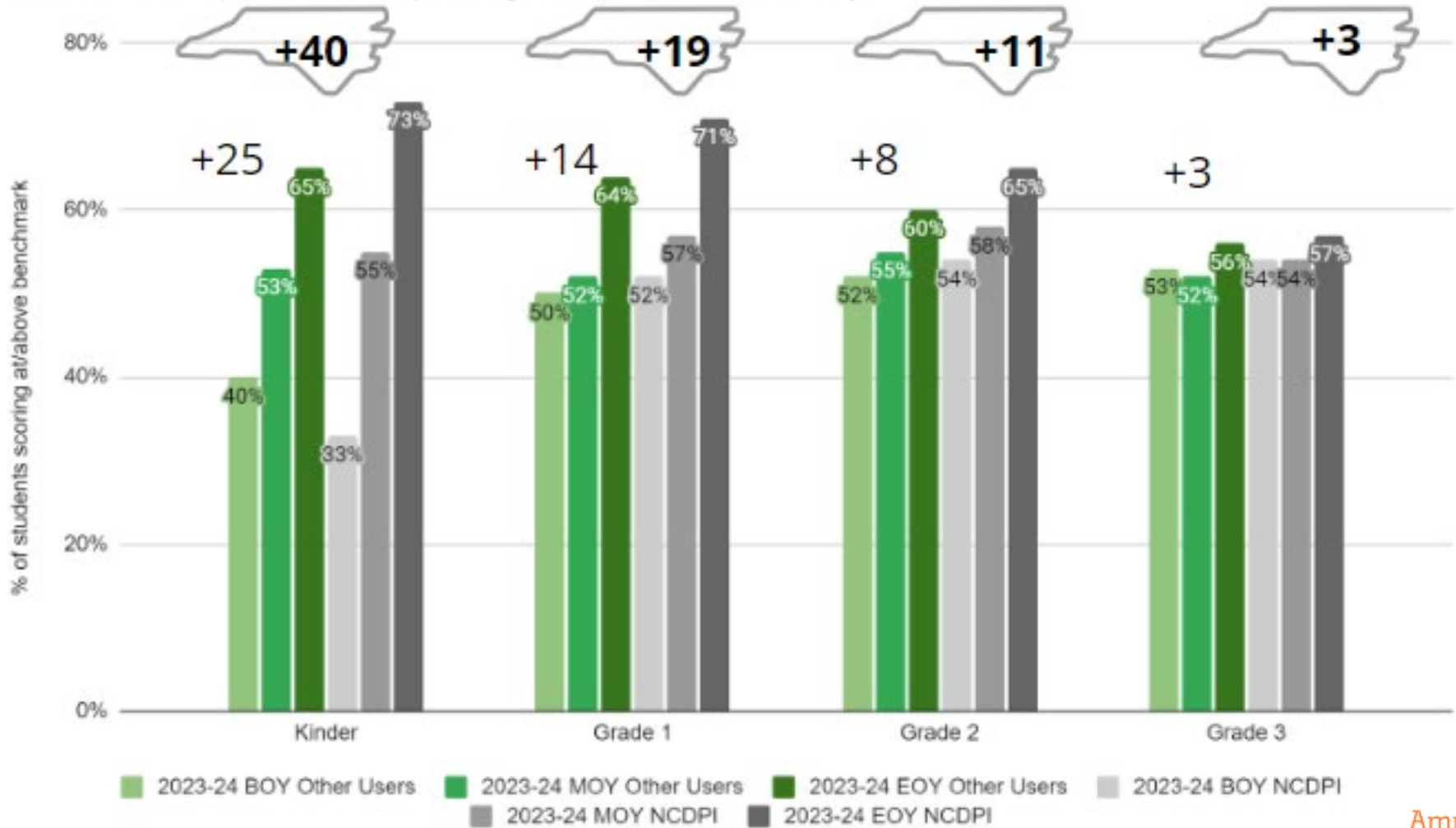
NCDPI

Amplify.



# NCDPI vs. Nation % Students on Track

% of Students On Track (Ready for Core Instruction)



Amplify.

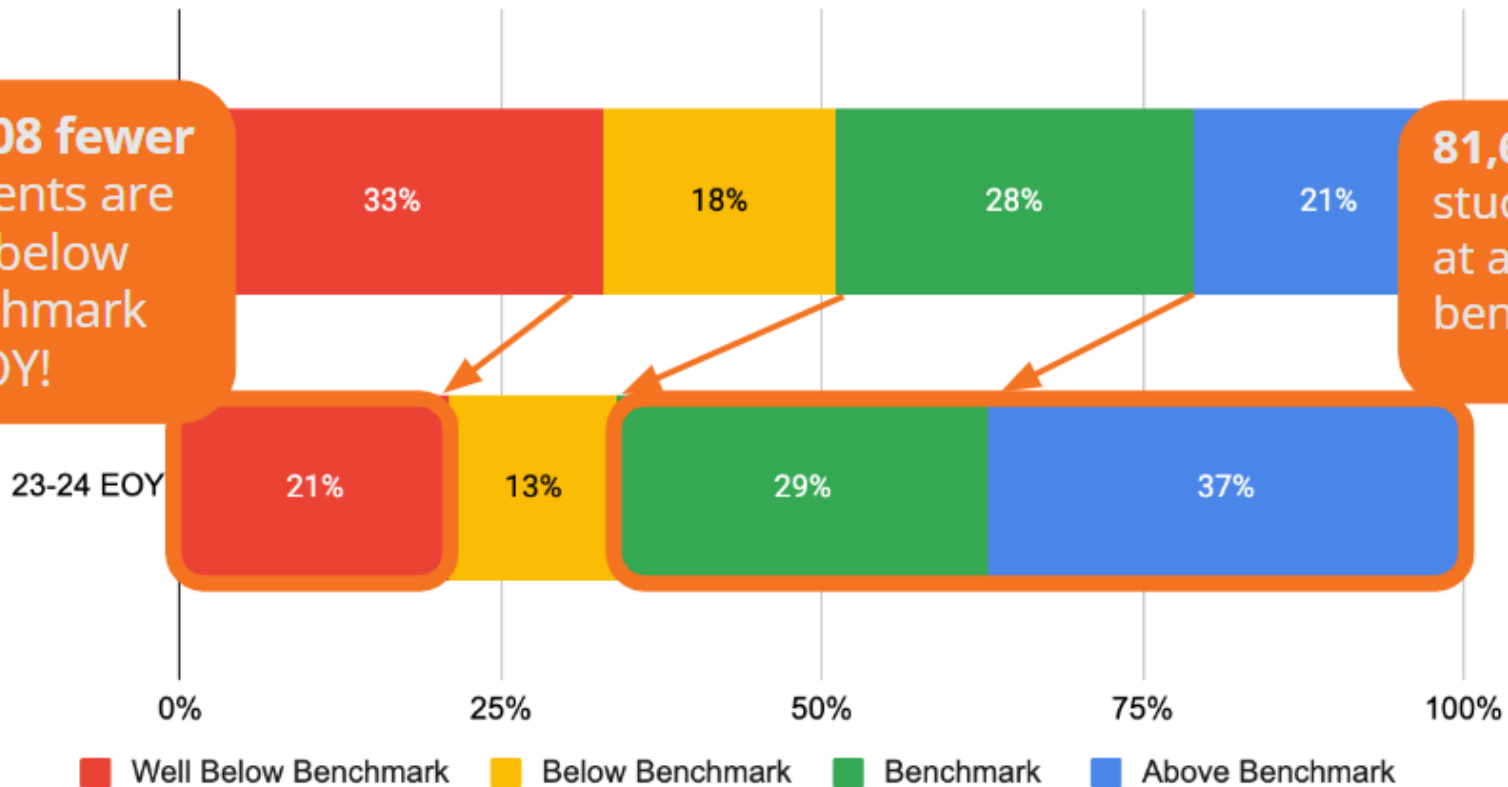


# NCDPI BOY to EOY 23-24

NCDPI K-3 BOY to EOY DIBELS 8 Composite Score 23-24

53,808 fewer students are well below benchmark at EOY!

81,616 more students are at and above benchmark



Amplify.

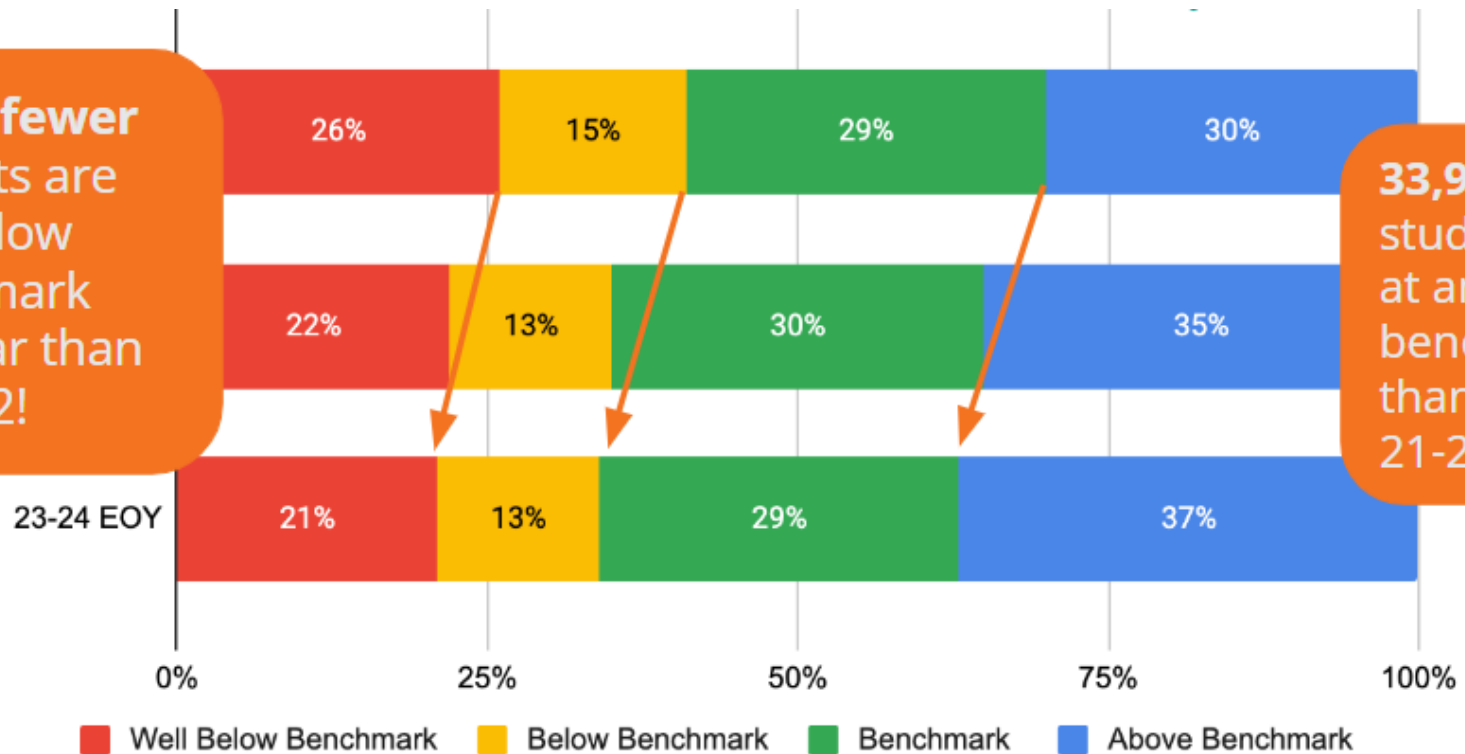


# NCDPI EOY 21-22, 22-23 and 23-24

## NC DPI K-3 EOY DIBELS 8 Composite Score

20,250 fewer students are well below benchmark this year than in 21-22!

33,909 more students are at and above benchmark than in 21-22!

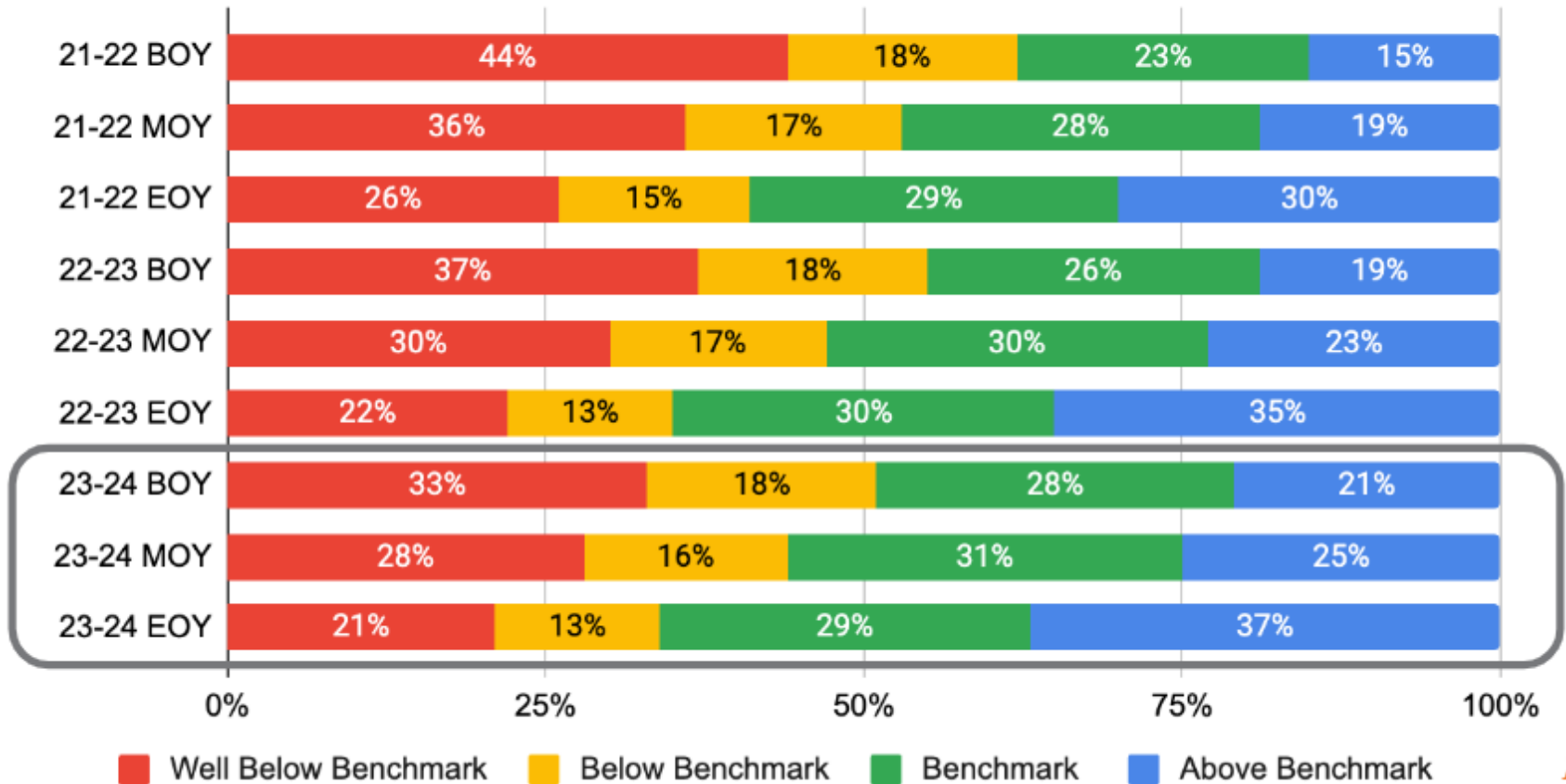


Amplify.



# Year over Year Overall Progress

NCDPI, K-3, BOY to EOY DIBELS 8 Composite Score

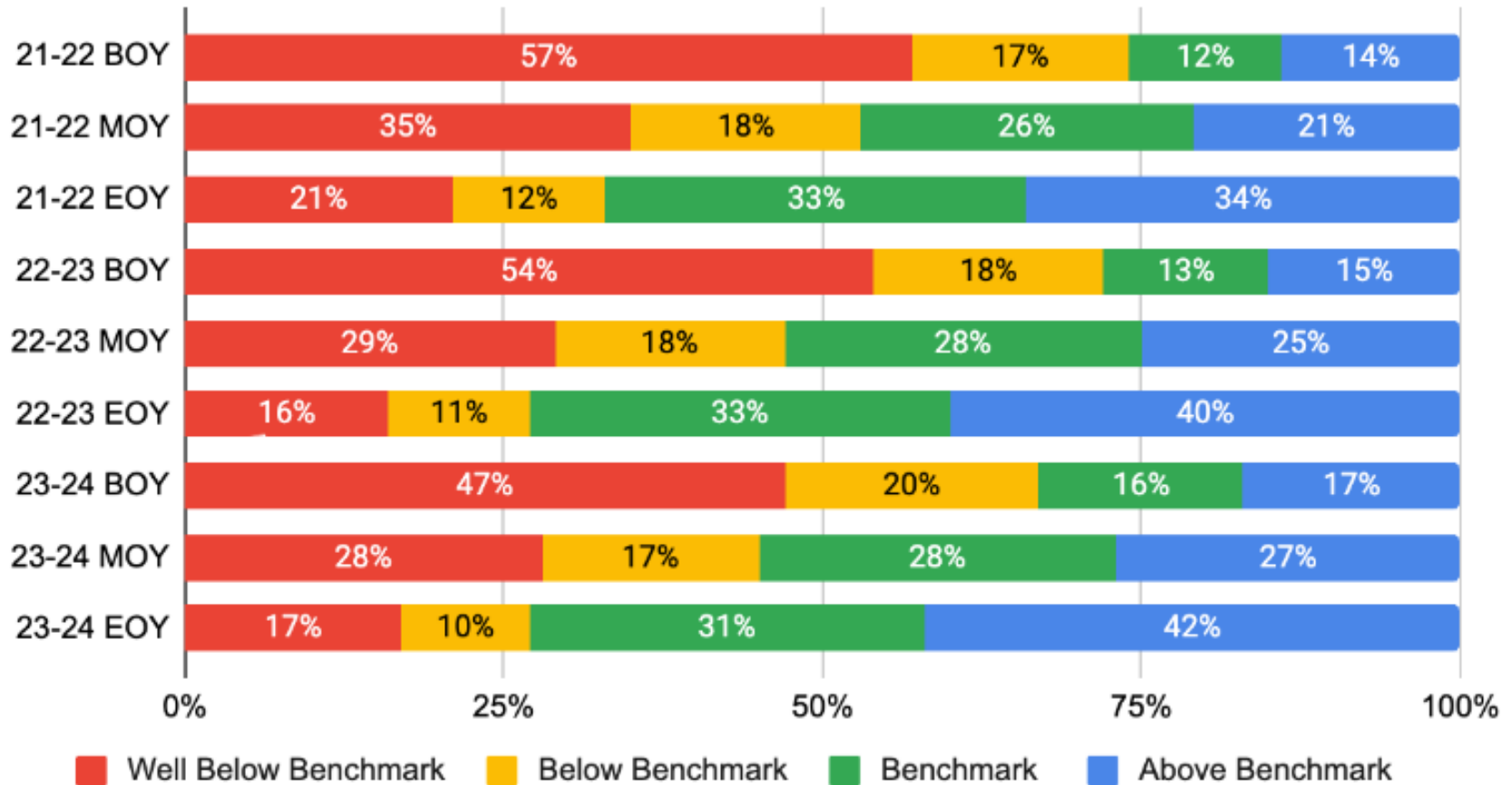


Amplify.



# NCDPI D8 Kinder Composite Score

NCDPI, Kinder BOY to EOY DIBELS 8 Composite Score

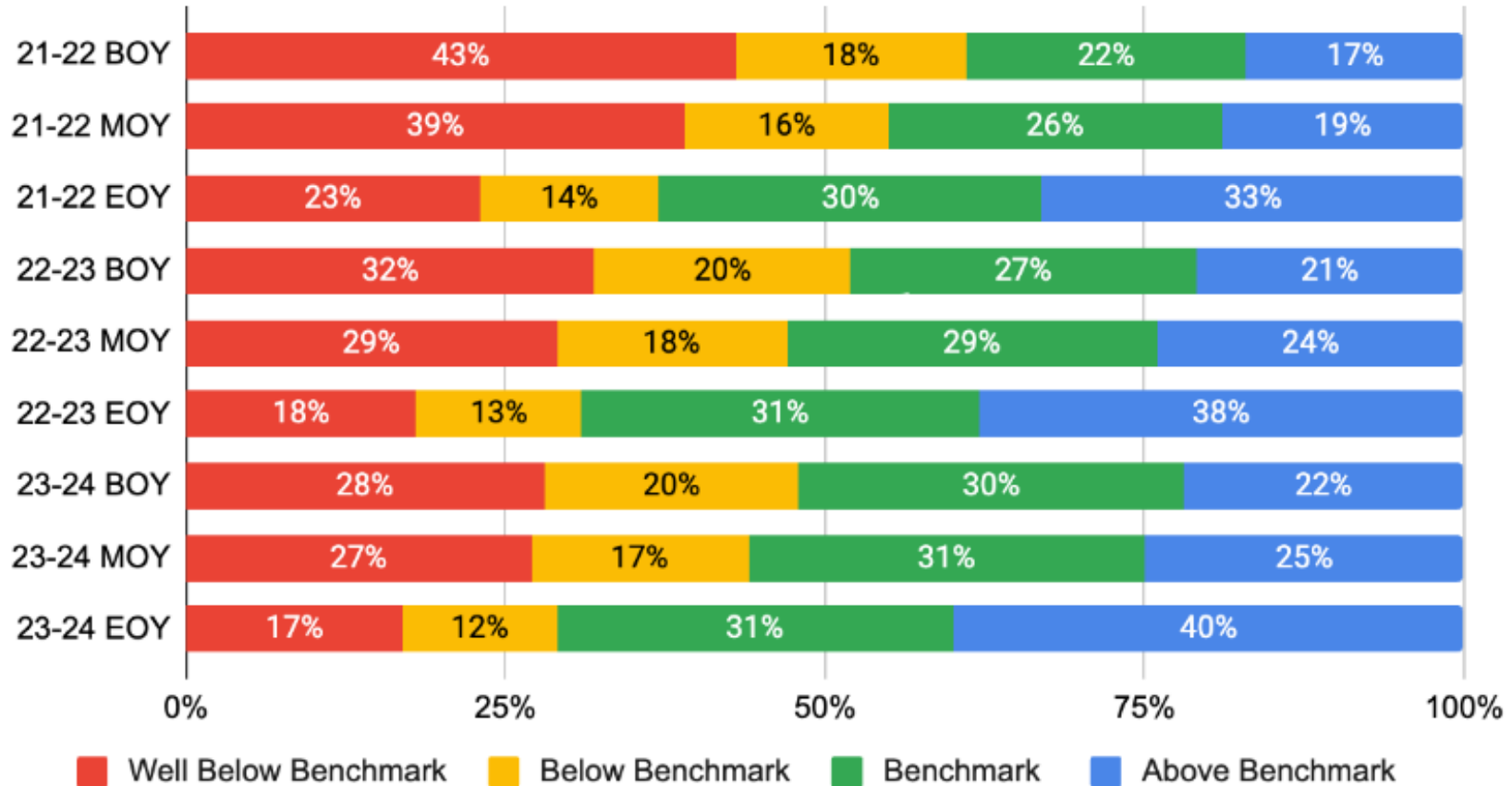


Amplify.



# NCDPI D8 Grade 1 Composite Score

NCDPI, Grade 1 BOY to EOY DIBELS 8 Composite Score

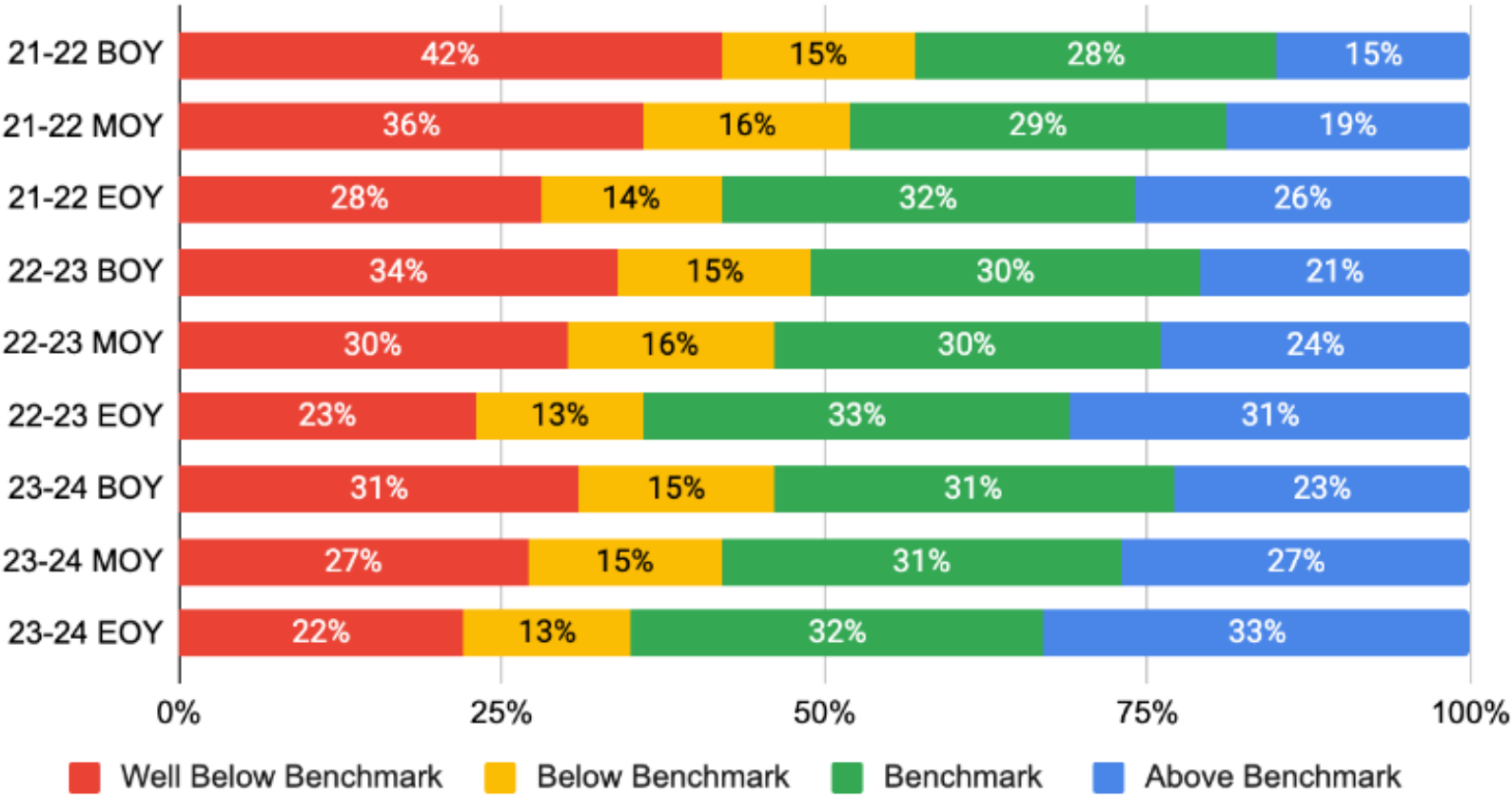


Amplify.



# NCDPI D8 Grade 2 Composite Score

NCDPI, Grade 2 BOY to EOY DIBELS 8 Composite Score

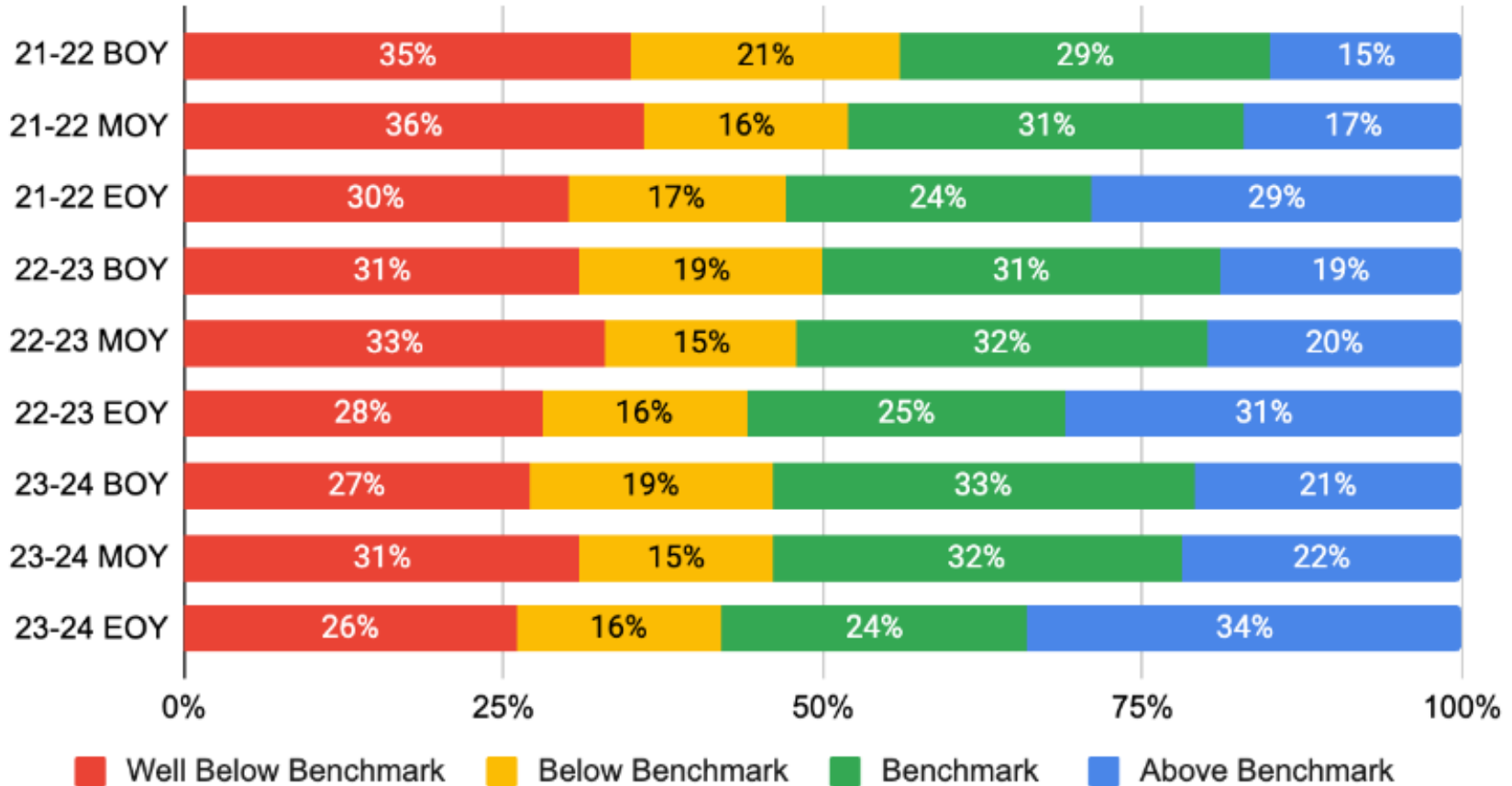


Amplify.



# NCDPI D8 Grade 3 Composite Score

NCDPI, Grade 3 BOY to EOY DIBELS 8 Composite Score



Amplify.



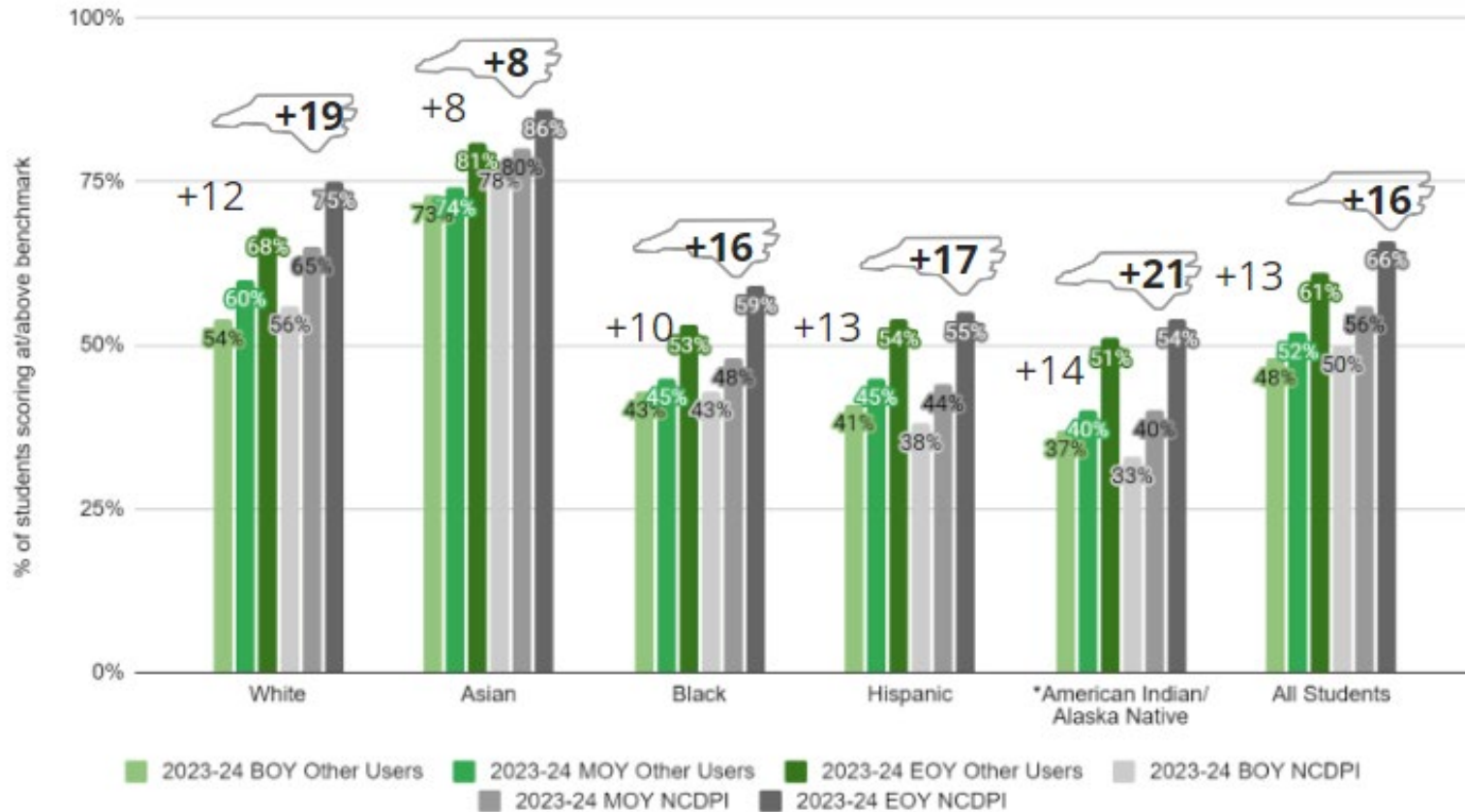
# Performance Trends

National Comparisons of Racial/Ethnic Student Subgroups



# Demographic Data, BOY to EOY Composite 23-24

% of Students On Track by Subgroups (Ready for Core Instruction)

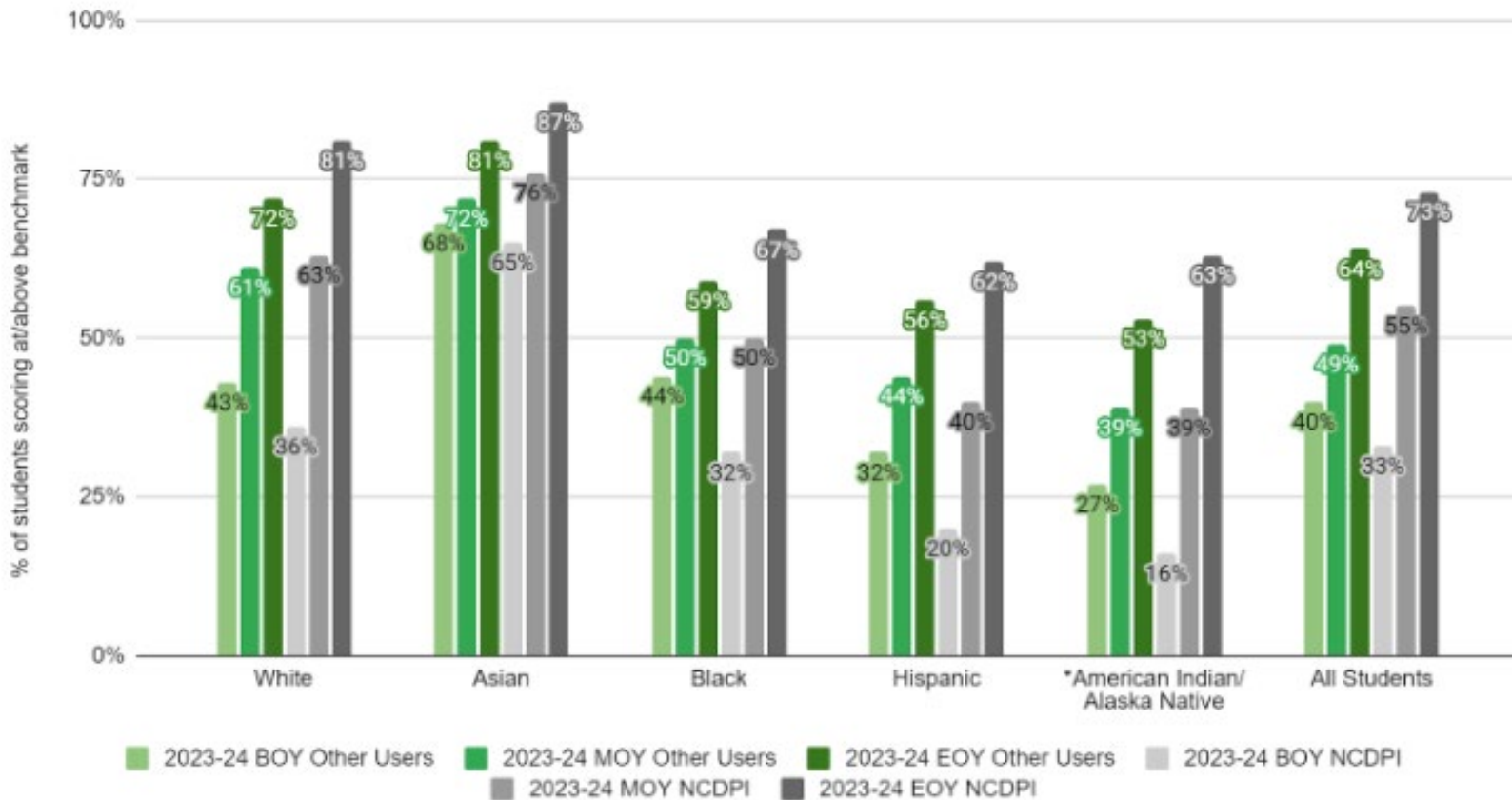


# Demographics by Grade

## Kindergarten

% of Students On Track by Subgroups (Ready for Core Instruction)

Kindergarten Students

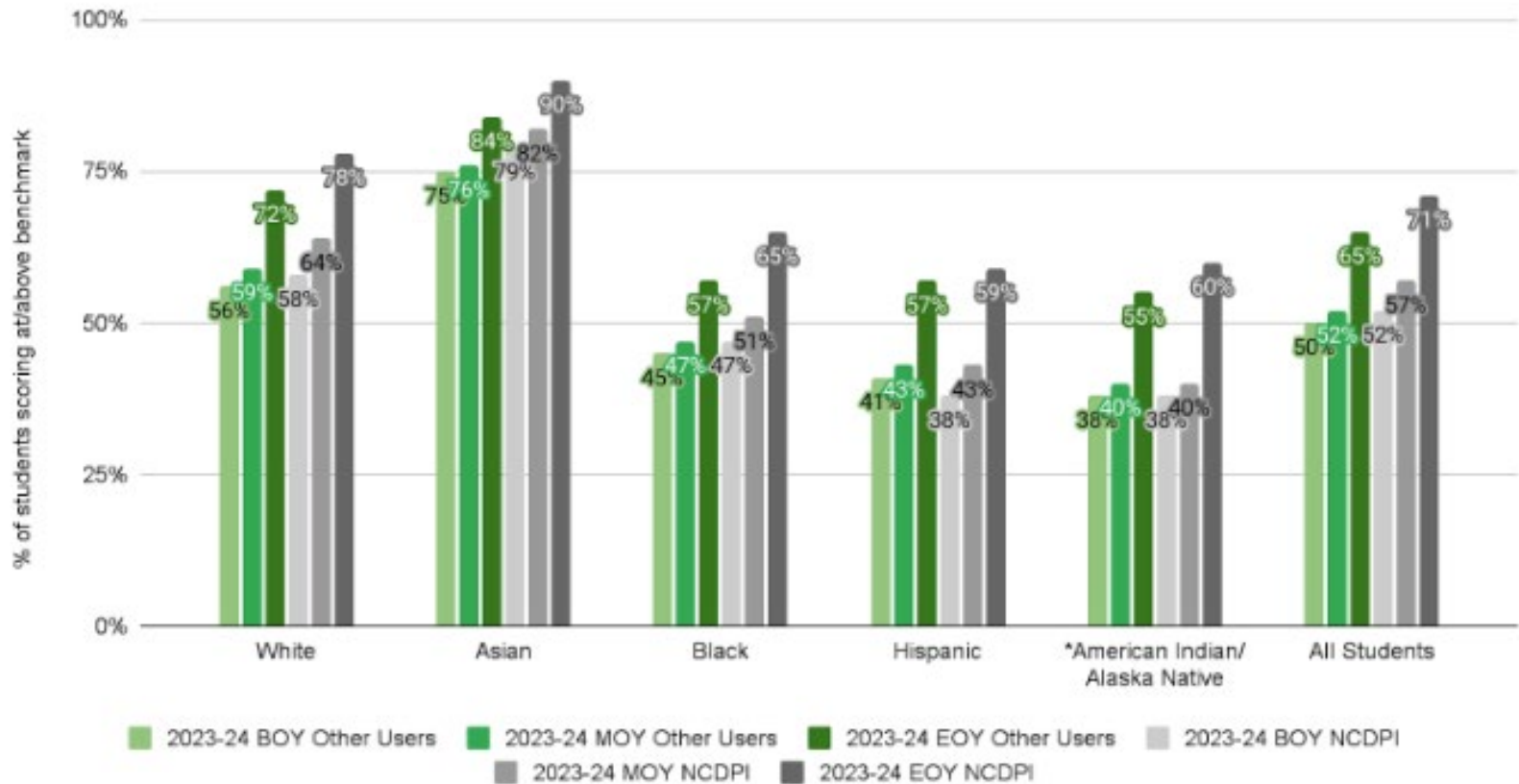


# Demographics by Grade

## First Grade

% of Students On Track by Subgroups (Ready for Core Instruction)

First Grade Students

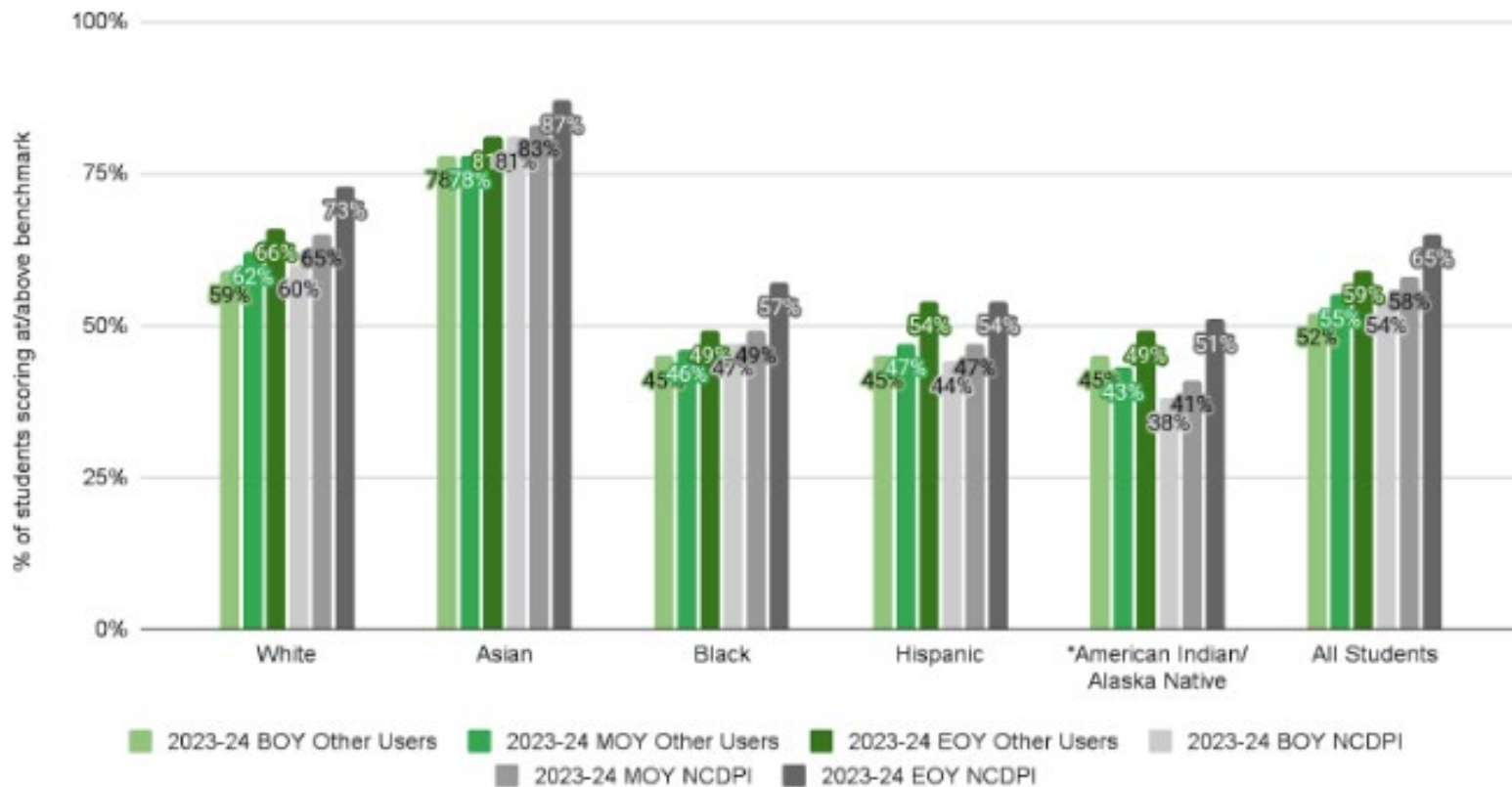


# Demographics by Grade

## Second Grade

% of Students On Track by Subgroups (Ready for Core Instruction)

Second Grade Students

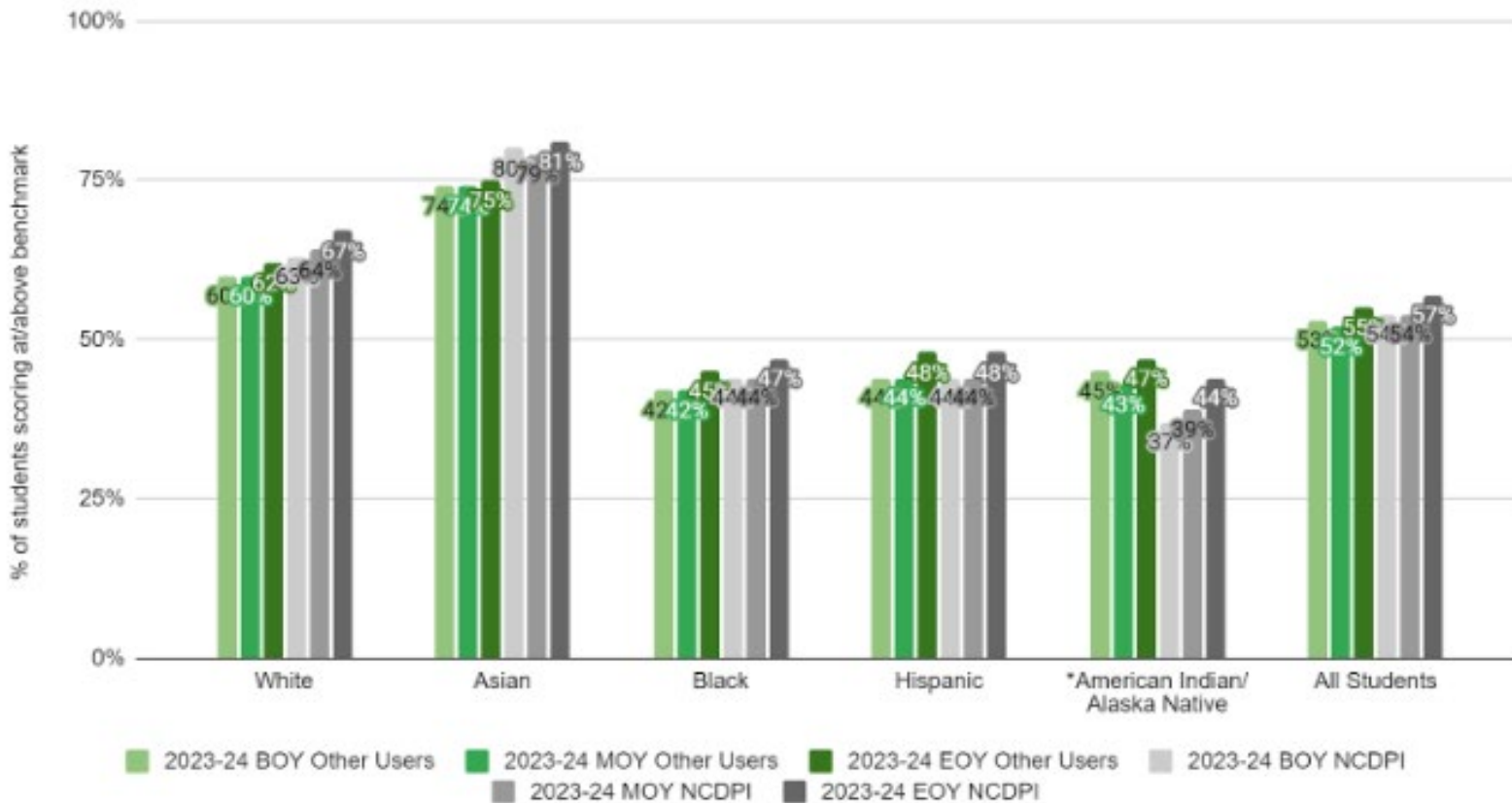


# Demographics by Grade

## Third Grade

% of Students On Track by Subgroups (Ready for Core Instruction)

Third Grade Students



Amplify.



# District Highlights



# Northeast Region



Camden County Schools  
Our Students, Our Future

- **District:** Camden
- **Outcome Data:** Performed **above** the state at/above benchmark percentages and growth in **all** grade levels and subgroups
- Significant growth from BOY-EOY in K-3 overall composite (EOY – 78% at/above – increase of 25%)
- Significant growth for black subgroup from 30% BOY to 73% EOY at/above – increase of 43%)
- **Process Improvement:** Grade levels where UFLI was implemented with fidelity made significant growth. Although turnover in district leadership, C&I /ELS stayed the course with strong processes



Continued  
Momentum

Amplify.



# North Central Region

- **District:** Nash
- **Outcome Data:** Performed **above** the state at/above benchmark percentages and growth in **all** grade levels
- Significant growth of over 20% from BOY-EOY in K-3 overall composite, as well as White, Black and Hispanic subgroups
- **Process Improvement:** District focused on completing walkthroughs with targeted feedback, developing a common language around fidelity/integrity of district resources, and utilizing data protocols to have admin/coaches/teacher meaningful dialogue related to specific classroom needs

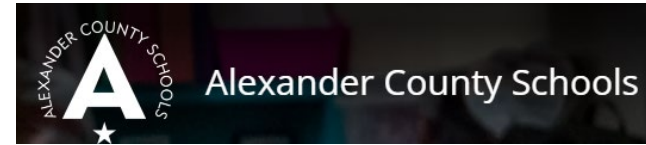


Continued  
Momentum

Amplify.



# Northwest Region



- **District:** Alexander
- **Outcome Data:** Performed **above** the state at/above benchmark percentages in **all** grade levels, as well as Black/Hispanic subgroups
- Significant double-digit growth from BOY-EOY in K-2 overall composite and each K-2 grade level, as well as White, Black and Hispanic subgroups
- **Process Improvement:** Consistent PLC processes with leaders and coaches, as well as data analysis guidance and differentiated PD support



Continued  
Momentum

Amplify.



# Piedmont Triad Region



- **District:** Mt. Airy
- **Outcome Data:** Performed **above** the state at/above benchmark percentages and growth in **all** grade levels and subgroups
- Significant growth from BOY-EOY in K-3 overall composite (EOY – 78% at/above – increase of 28%)
- K, 1 and 2 are all above 80% composite
- Hispanic Subgroup grew from 39% to 70%
- **Process Improvement:** Second year implementing CKLA as a core curriculum, along with a strong focus on interventions and progress monitoring



Amplify.



# Sandhills Region



**CLINTON**  
CITY SCHOOLS

- **District:** Clinton City
- **Outcome Data:** Performed **above** the state at/above benchmark percentages in K-2 and all subgroups
- American Indian subgroup is 84% at/above benchmark
- **Process Improvement:** Continuing to provide consistent PLCs and PD aligned to the SoR and data analysis. K-4 teachers are implementing Amplify Burst interventions to close gaps



Continued  
Momentum

Amplify.



# Southeast Region



**Brunswick County Schools**  
Producing College and Career Ready Graduates

- **District:** Brunswick
- **Outcome Data:** Performed **above** the state at/above benchmark percentages and growth in **all** grade levels and subgroups
- White & Black Subgroups at K EOY are *each at 87%*
- Significant growth from BOY-EOY in K-3 overall composite (EOY – 74% at/above – increase of 25%)
- **Process Improvement:** Incorporating practices and research into PLCs, data discussions, and planning with teachers for high quality instruction. Brunswick has been heavily focused on strategic planning

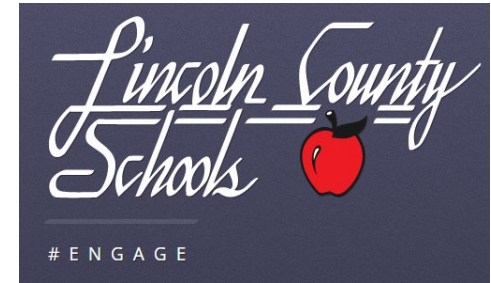


Continued  
Momentum

Amplify.



# Southwest Region



- **District:** Lincoln
- **Outcome Data:** Performed **above** the state at/above benchmark percentages and growth in **all** grade levels
- Significant growth of over 20% from BOY-EOY in K-3 overall composite, as well as White, Black and Hispanic subgroups
- **Process Improvement:** Adopted a new language comprehension core curriculum to support the word recognition core curriculum. Aligned SoR resources to pacing documents for fidelity of districtwide consistency and teacher support



Amplify.



# Western Region

## Haywood County Schools

*Passionate Work, Productive Work, Student Success*

- **District:** Haywood
- **Outcome Data:** Performed **above** the state at/above benchmark percentages and growth in **all** grade levels and subgroups
- Significant growth from BOY-EOY in K-3 overall composite (EOY – 77% at/above – increase of 22%)
- **Process Improvement:** All in approach! District and School administrators have attended Literacy for Leaders to support teachers. Changing processes to do what is best for kids, even when it's not easy. Continuous Improvement mindset



Continued  
Momentum

Amplify.



# Questions?

