



Student Membership Forecast

February 4, 2025

Marcella S. Rorie, WCPSS Senior Director Long Range Planning
Lindsey M. Davis, Wake County Government Senior Budget and Management Analyst
Christopher Dick, UNC- Carolina Demography/Demographic Analytics Advisors
Nathan Dollar, UNC-Carolina Demography



Overview

1

Presentation of the Annual Membership Forecast (1-year and 10-year projections)

2

Review of Projected Crowding for the Next School Year

3

Review of Capital Improvement Plan (CIP) Updates (7-year plan)

4

Preparation of the Annual Enrollment Plan

5

Review and Approval of Capped Schools due to Overcrowding Concerns

6

Review of Options to Address Other School Utilization Concerns

Presentation of the Annual Membership Forecast (1-year and 10-year projections)

1. Annual kickoff meeting with forecast team
2. Collect data on market share membership
3. Receive PMR2 (Principal's Monthly Report month 2)
4. Develop 10-Year membership forecast for Budget
5. Jointly present findings to the BOE
6. Forecast results used to inform the Superintendent's budget and the CIP

Strategic Plan Alignment

Alignment with Core Beliefs

- **Core Belief # 7** which references optimal learning environments, sufficient resources and well-maintained facilities

Alignment with Strategic Priorities

- **Priority # 3: Operational Effectiveness** which references an inviting and safe environment for every school

Alignment to Strategic Priority # 3 Aims:

- **Equity Focused Practices:**
 - **Aim 13** which references systemic expectations around equity
- **Effective Operations, Services, and Facilities:**
 - **Aim 16** which references Metrics for accountability
 - **Aim 18** which references prioritizing safety
 - **Aim 20** which references systemic processes balancing operational efficiency, fiscal responsibility and environmental sustainability

Definitions

- **ADM** - Average Daily Membership is the number of membership days for all students not in attendance violation, divided by the number of days in the school month.
- **PMR-2** - Principals' Monthly Report - month 2 ADM for all schools.
- **Enrollment** - The actual number of students actively enrolled, regardless of attendance violations.
- **Attendance Violations** - (10-Day Rule) when a student accumulates ten consecutive days of unexcused absences.



Forecast Process

Growth Forecasts: A Collaborative Effort

Carolina Demography UNC-Chapel Hill

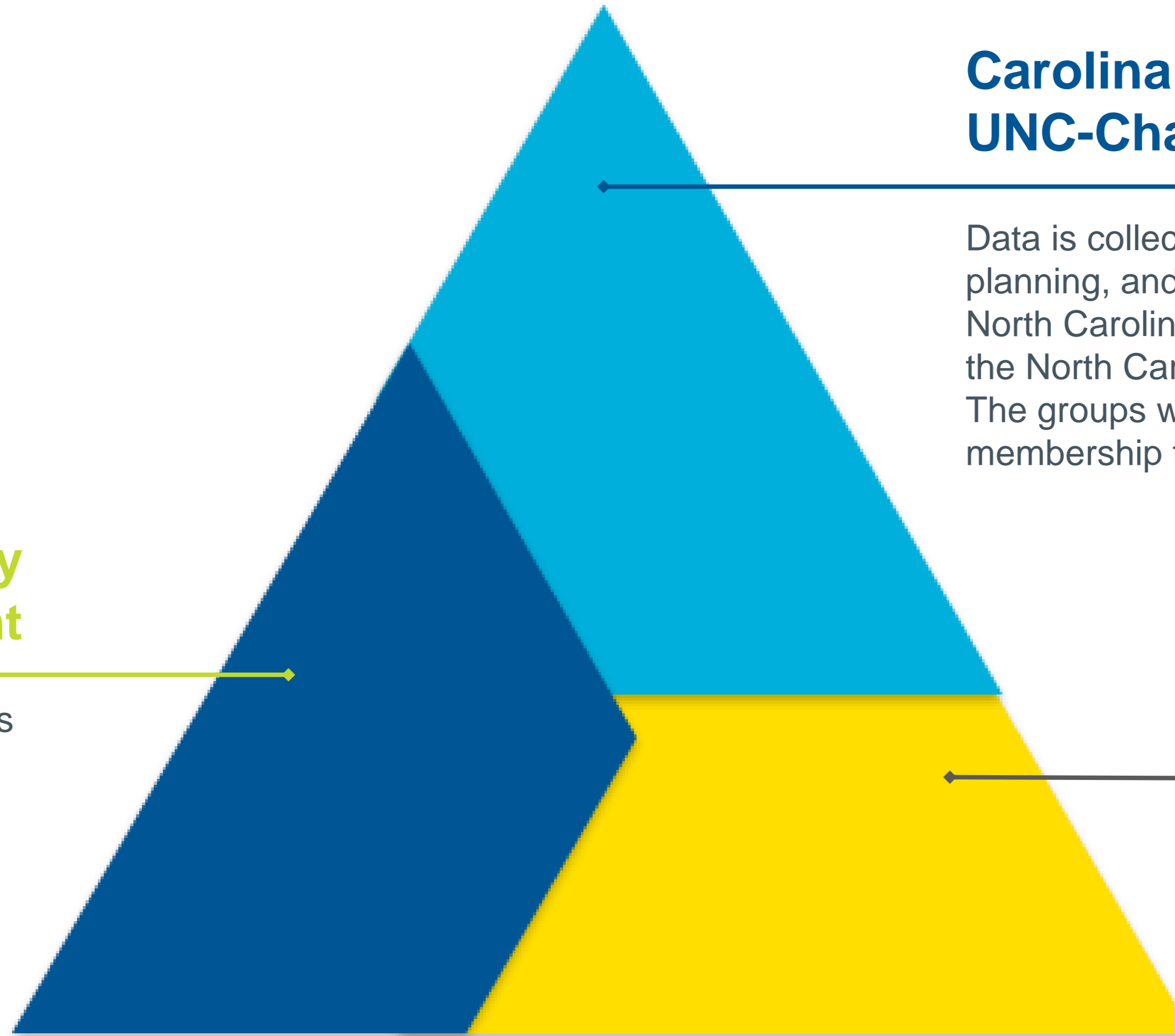
Data is collected from WCPSS, Wake County planning, and municipal planning agencies, the North Carolina Center for Health Statistics, and the North Carolina Department of Administration. The groups work collaboratively to develop membership forecasts.

Wake County Government

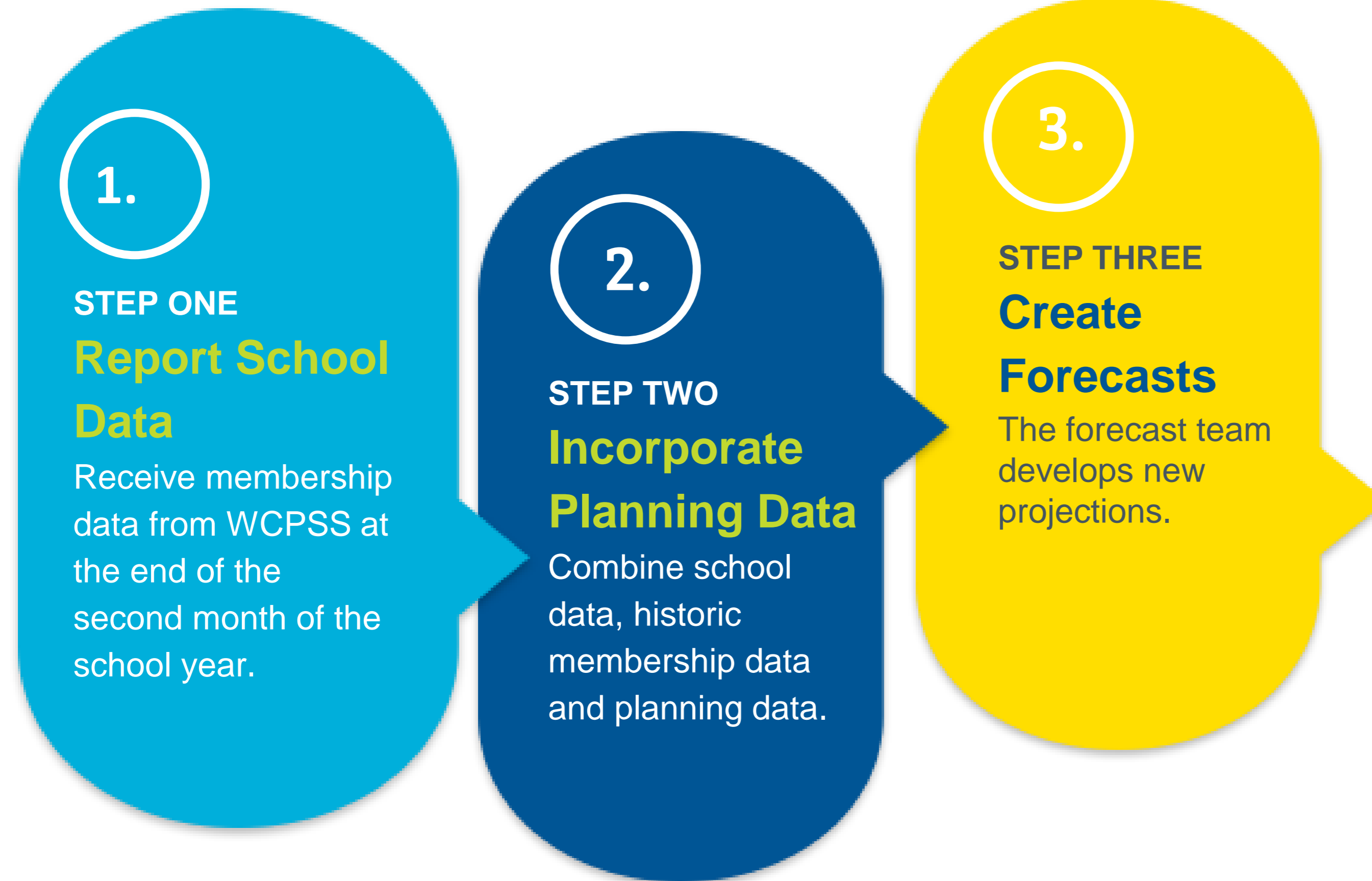
Primarily responsible for analysis of economic and demographic data.

Wake County Public School System

Primarily responsible for providing student membership counts and data related to membership trends.



How Growth is Forecasted



Data is adjusted annually to reflect changes in membership, birth rates, school-age residents and market share decisions.

Continuing impacts to the forecast

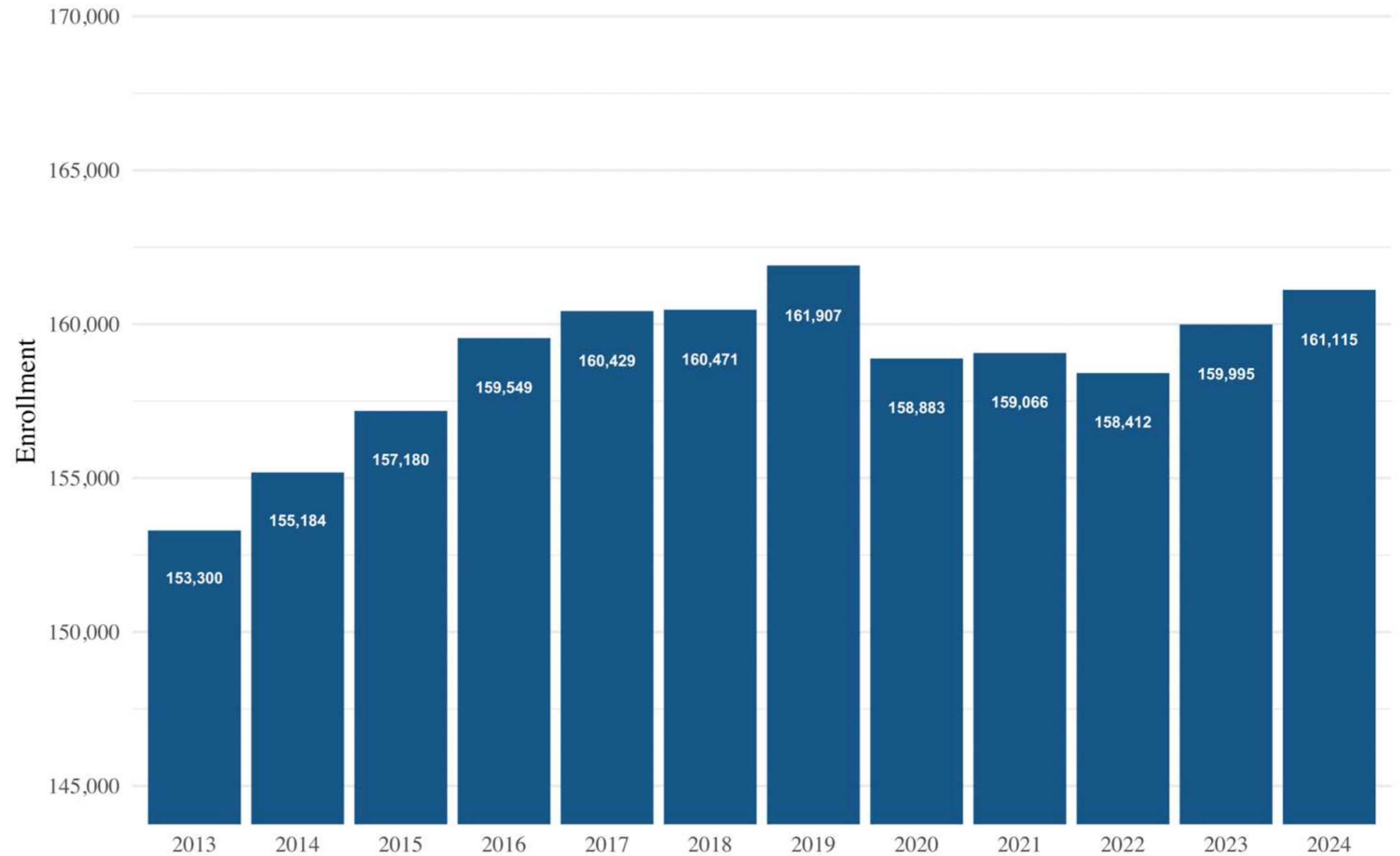
- Current membership and enrollment levels remain lower
- Changes in market share
- Economic indicators
- Live birth changes



Attendance

Month 2 ADM Trends

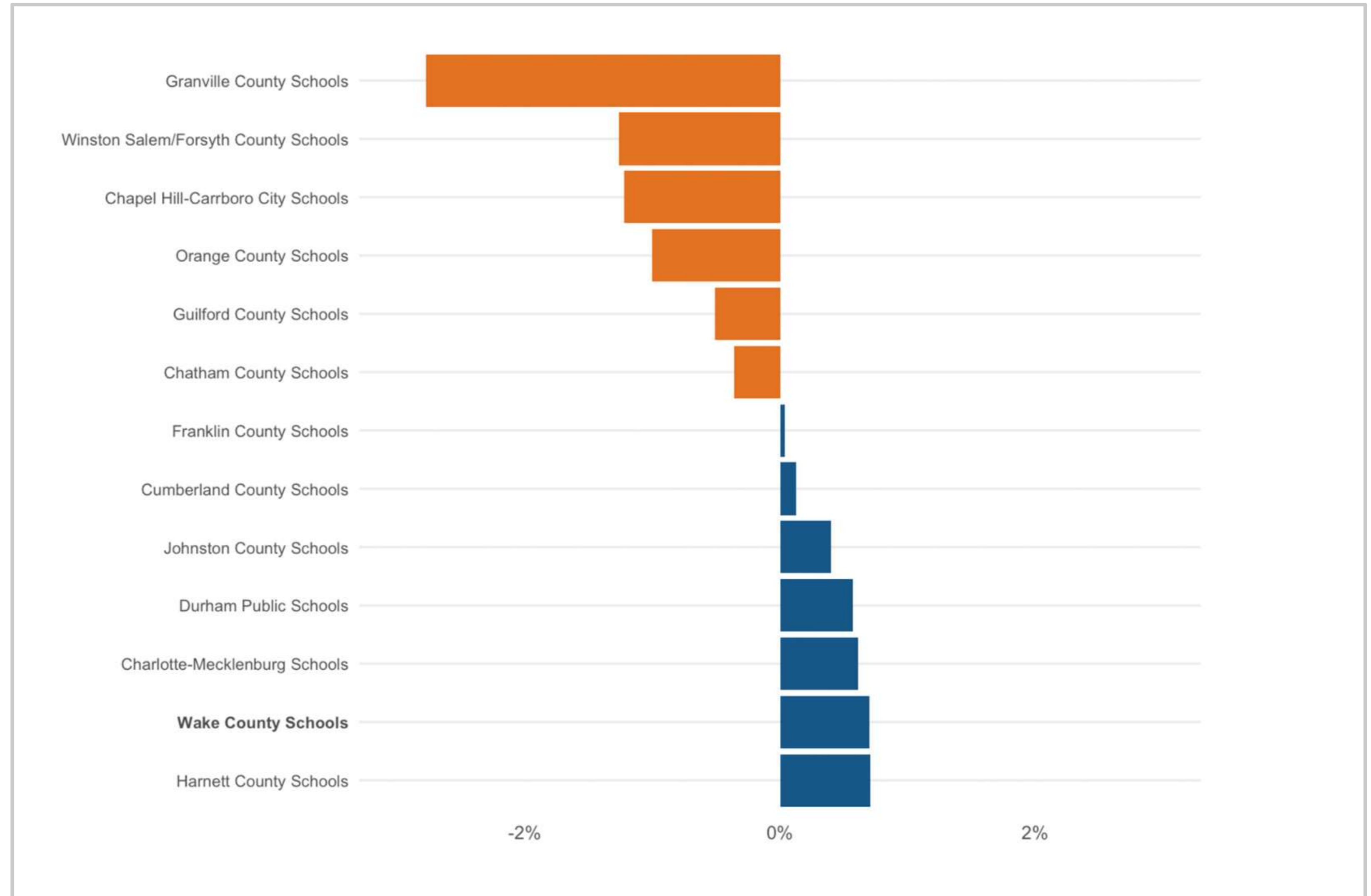
Month 2
Average
Daily
Membership
(ADM)



2020-21 and 2021-22 school years were adjusted for anomalous attendance violations.

Percentage Month 2 ADM Changes - 2023-24 to 2024-25

WCPSS is the second fastest growing district, and only 1 of 7 to grow year over year versus comparative districts.

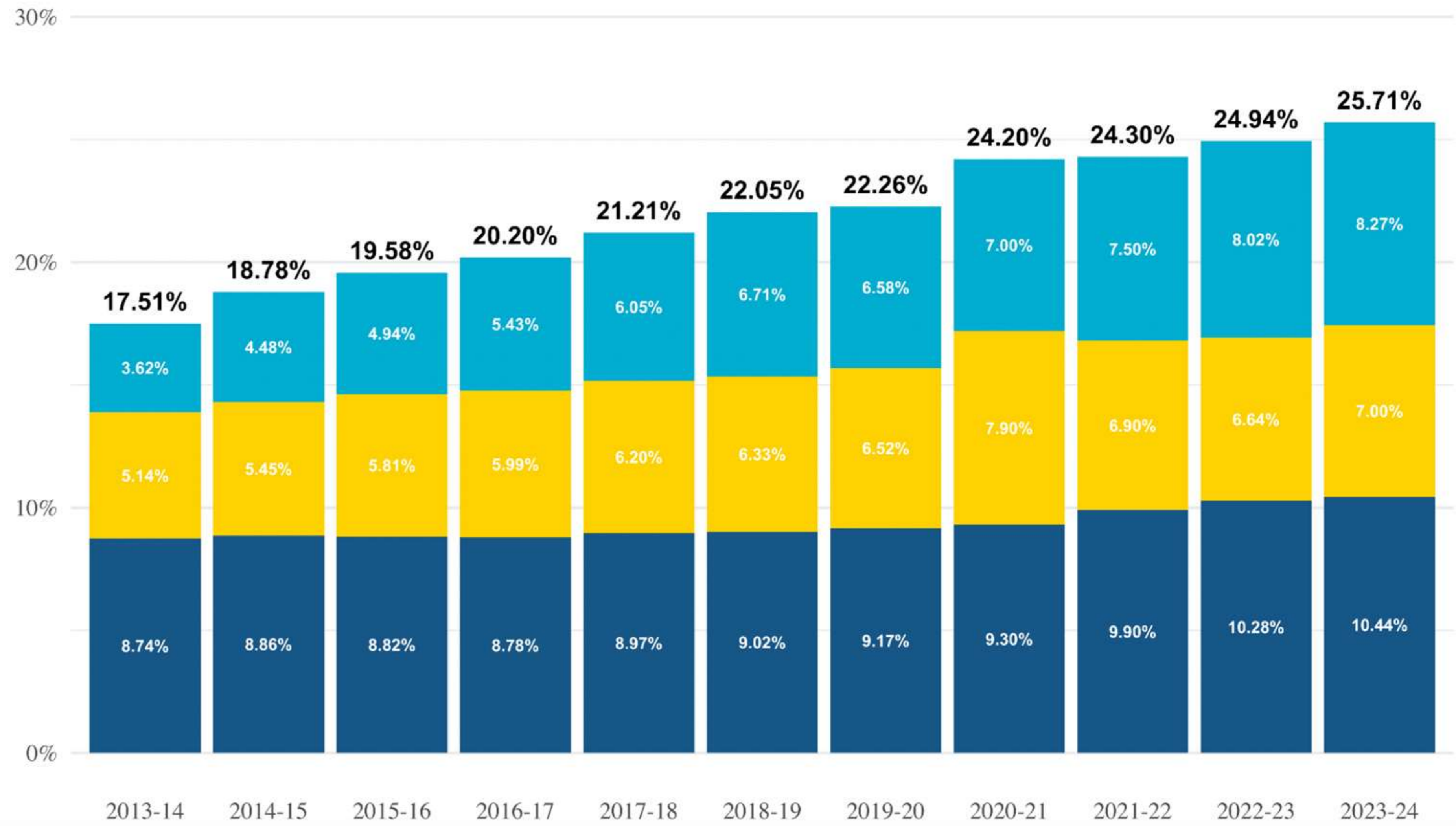




Market Share Impacts

Market Share of Non-WCPSS Schools

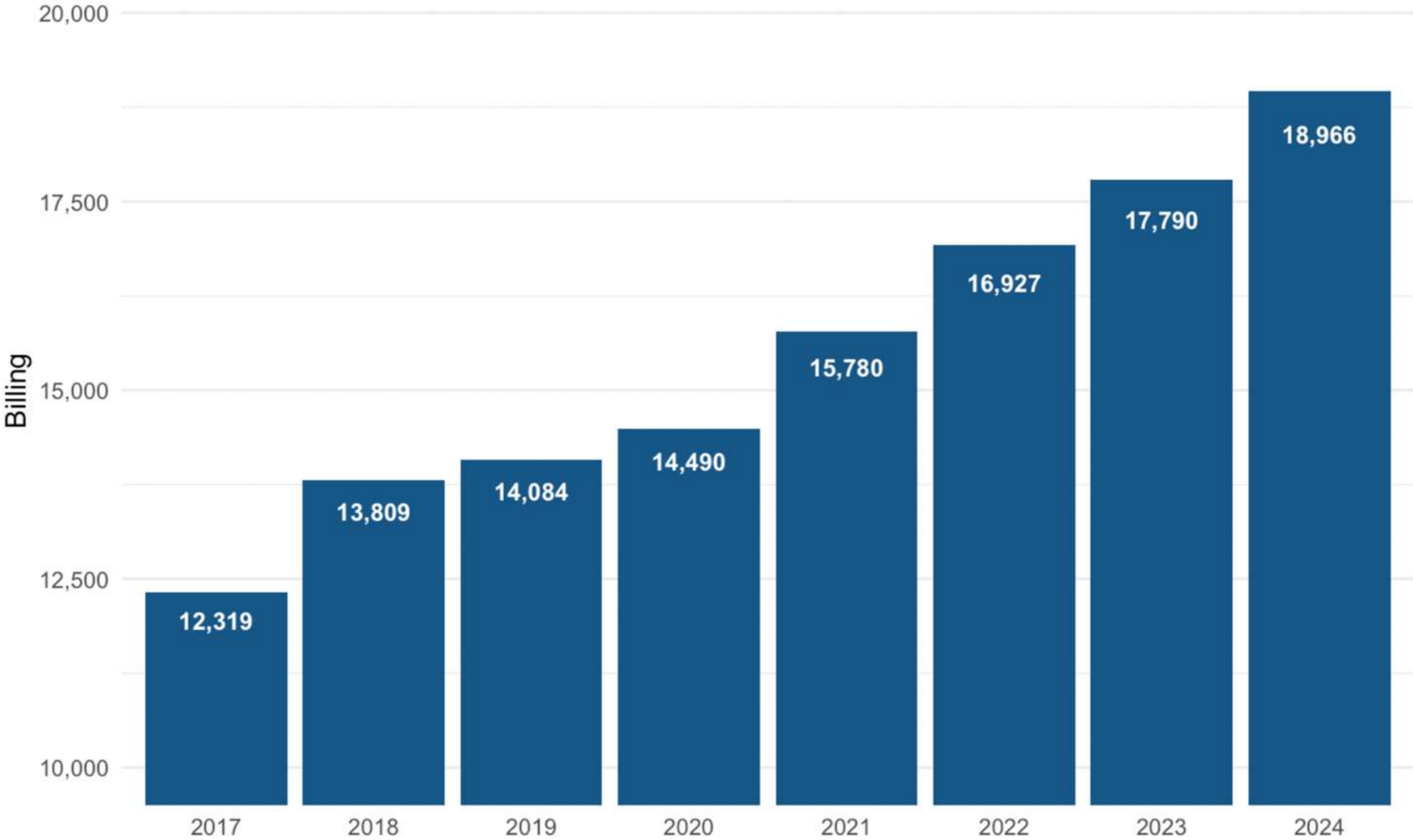
Historical Market Share



Wake County charter school membership billing

1 new charter school is scheduled to open Fall 2025.

No charter schools have closed in 2024-25.



Note: Year is the beginning year of a school year
Source: WCPSS

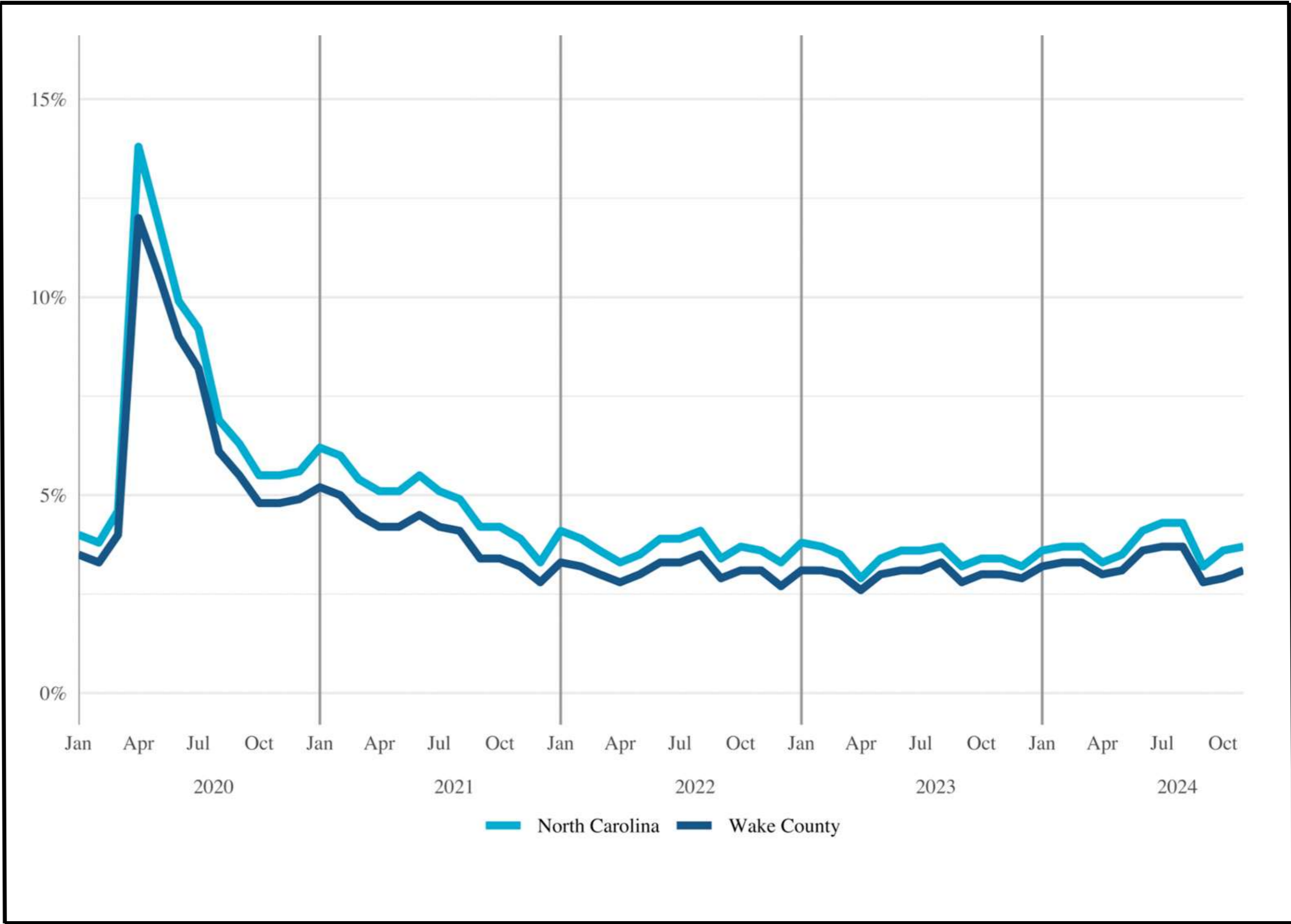


Forecast Impacts

Economic Indicators in Wake County

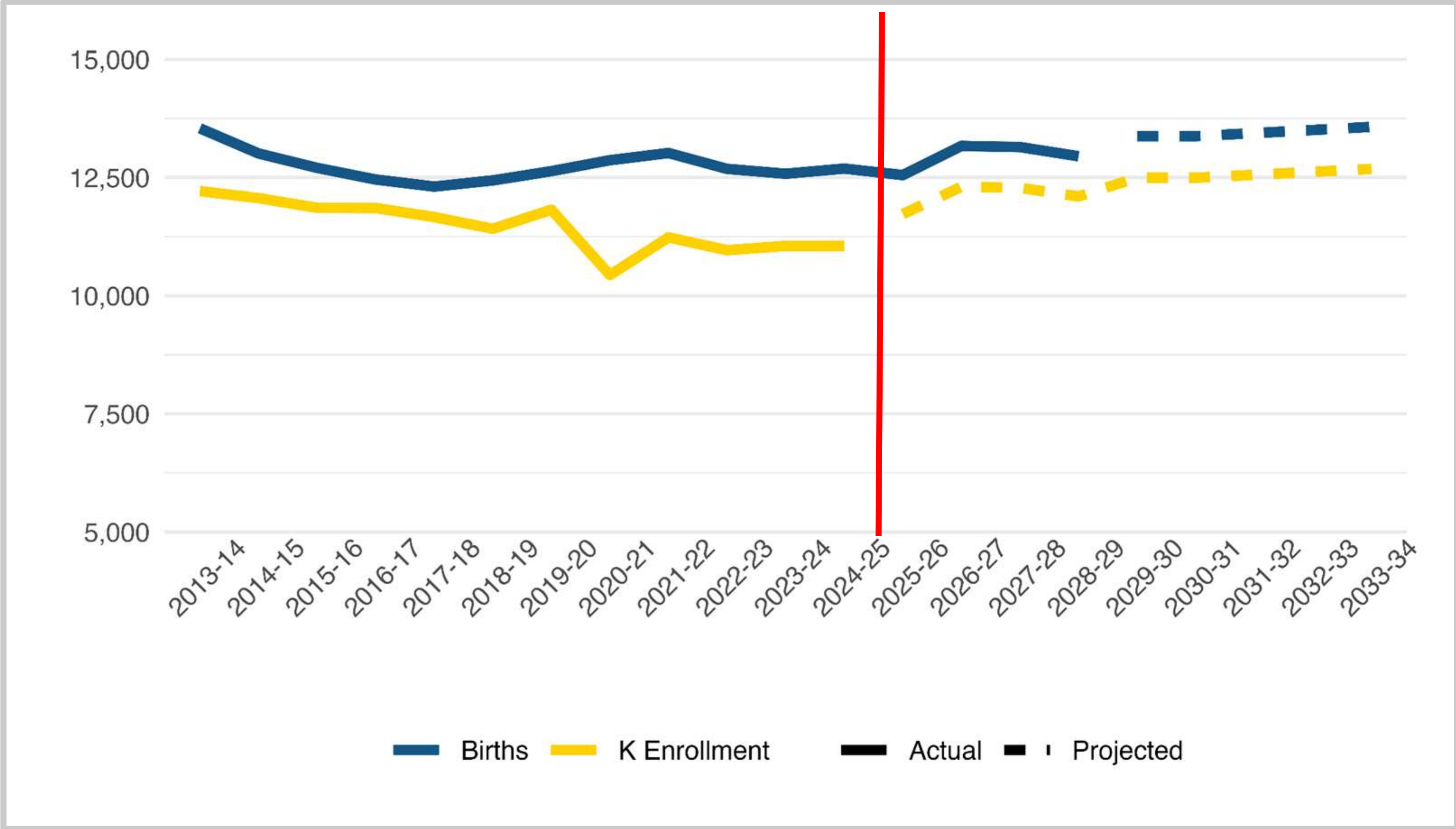
Unemployment Rate by Month, Wake vs. NC, 1/2020 - 10/2024

Wake County's unemployment rate has been consistently lower than the state average.



Kindergarten Membership

WCPSS
Kindergarten
membership
compared to
live births, five
years prior.

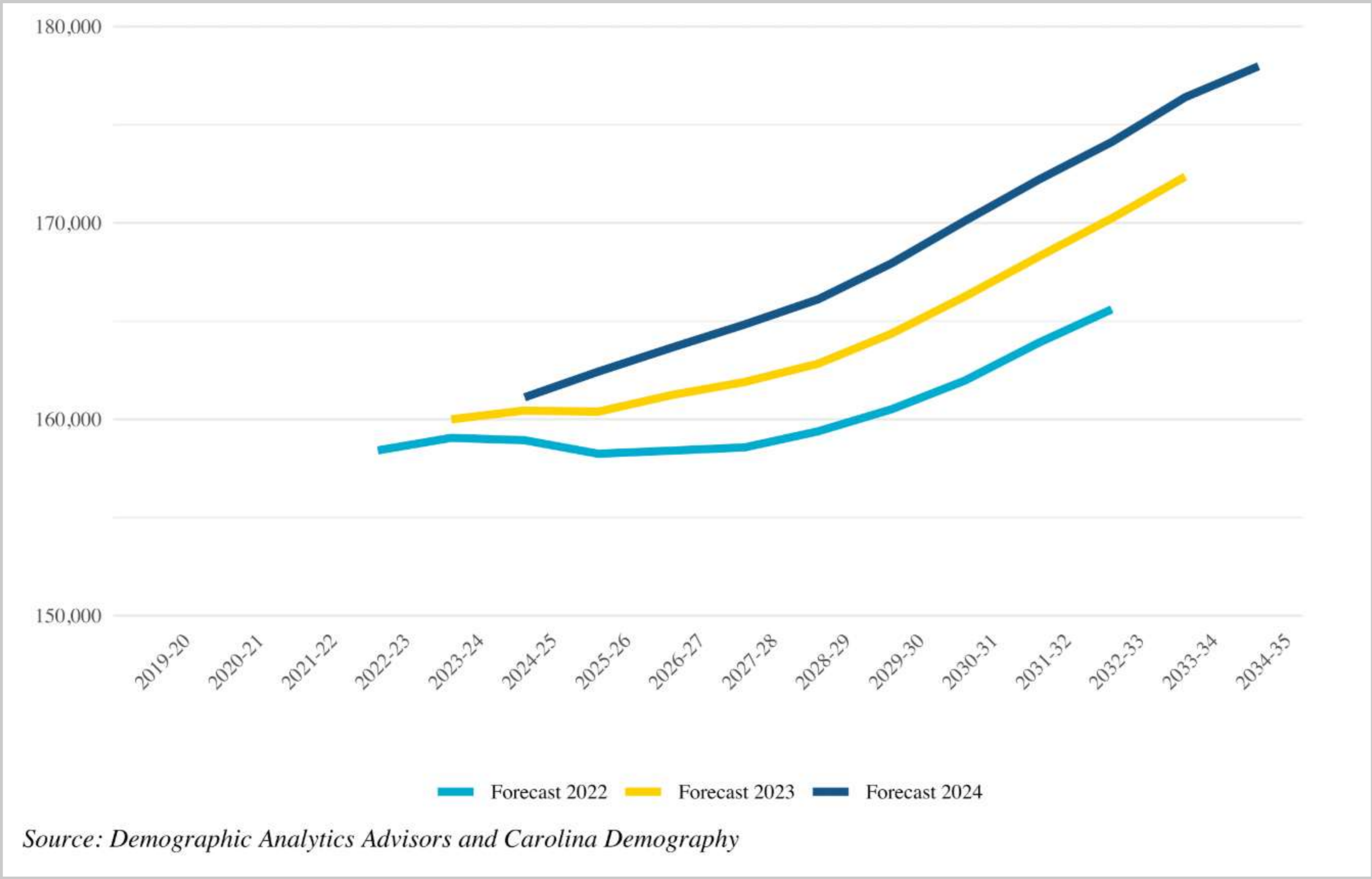




2024-25 Membership Forecast

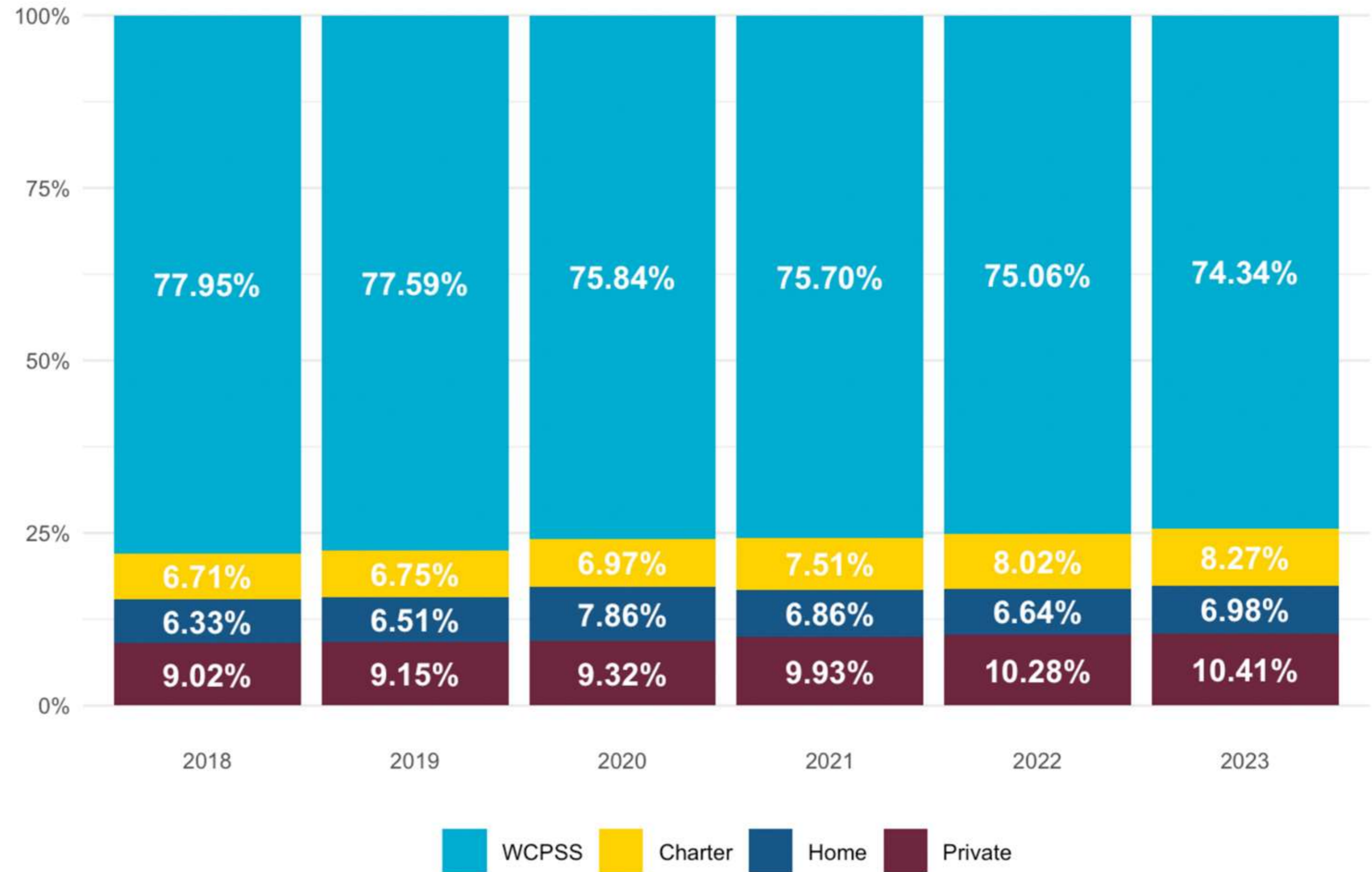
Long-Term Forecast

Membership is forecasted to increase starting in 2026 due to an increase in resident live births and in-migration.



All School-Aged Children

The majority of Wake County students attend WCPSS schools.



Closure and Questions

Attachments:

- Membership Forecast Memo
- 10-year Membership Forecast Executive Summary
- 10-year Membership Forecast Projections

