

# DISTRICTWIDE ENROLLMENT STUDY UPDATE

---

**February 18, 2025**

WHITNEY OAKLEY, ED.D. | SUPERINTENDENT

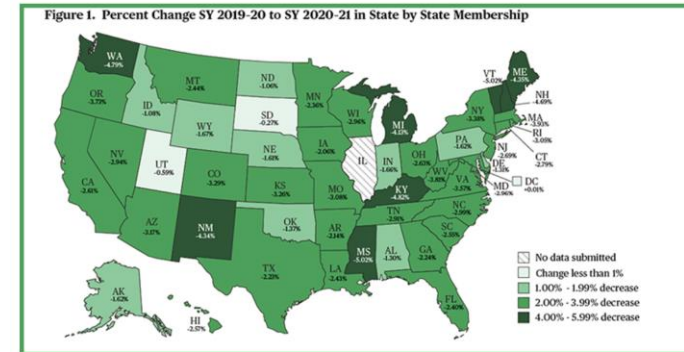


# Background

Guilford County Schools, like many school districts across the country, has seen a downward trend in enrollment for the last several years that has been exacerbated by the pandemic.

**New Federal Data Confirms  
Pandemic's Blow to K-12 Enrollment,  
With Drop of 1.5 Million Students; Pre-K  
Experiences 22 Percent Decline**

**The74**



By Kevin Mahnken | June 28, 2021

**WFAE 90.7**  
CHARLOTTE'S NPR NEWS SOURCE

90.7 Charlotte 93.7 Southern Pines  
90.3 Hickory 106.1 Laurinburg

**Most NC school districts haven't  
regained students lost during the  
pandemic plunge**

# Charter Schools and Vouchers

EdNC®

As 2025-26 applications open, big bump in number of vouchers first seen in data



Mebane Rash  
February 7, 2025

After legislative changes, here's a look at North Carolina's charter school application process



Hannah Vinueza McClellan  
August 12, 2024

Charter schools: Guardrails lowered, poised for expansion



Ten years of NC's private school vouchers, and they're only becoming less accountable

The Washington Post

Democracy Dies in Darkness

Billions in taxpayer dollars now go to religious schools via vouchers

The rapid expansion of state voucher programs follows court decisions that have eroded the separation between church and state.

June 3, 2024

Majority of North Carolina private school vouchers go to white students and religious schools

3:17PM JANUARY 24, 2025  
by Amy Diaz



WRAL NEWS

WRAL INVESTIGATES

Back to school: NC ranks low on public school spending, but sent \$180 million to private schools

Thousands of North Carolina families are in limbo as they were promised money in the form of school vouchers from the state, but that money's now caught in a political tug-of-war even though the House and Senate both support expanding the voucher program.

Posted 12:25 p.m. Aug 19 - Updated 10:27 a.m. Sep 9



# Historical Enrollment Trends in Guilford County

School	2018-19	2019-20	2020-21	2021-22	2022-23	2023-24	2024-25
Guilford County Schools	71,698	71,414	69,311	68,202	67,949	66,844	66,474
Charter School	7,381	7,790	8,513	9,307	9,977	10,632	11,246
Home School	5,367	5,827	7,052	6,101	4,747	4,999	4,999*
Private School	6,523	6,191	6,262	6,509	6,826	7,156	7,156*
<b>Total Guilford County</b>	<b>90,969</b>	<b>91,222</b>	<b>91,138</b>	<b>90,119</b>	<b>89,499</b>	<b>89,631</b>	<b>89,875</b>

- GCS enrollment counts are for grades K-12 and do not include PreK.
- Home School membership was obtained from the NC Department of Administration's NC HOME SCHOOL Statistical Summaries 2018-19 through 2023-24. 2024-25 is unavailable until after EOY data are published. Replicated 2023-24 data for 2024-2026.
- Private School membership was obtained from the NC Department of Administration's NC PRIVATE SCHOOL Statistical Summaries 2018-19 through 2023-24. 2024-25 is unavailable until after EOY data are published. Replicated 2023-24 data for 2024-2026.
- Charter School membership data is the average for all completed years and for 25/26 the average growth on top of the 24/25 total



# Variables

- ✓ Boundary adjustments
- ✓ School consolidation
- ✓ Changes / additions in program offerings
- ✓ Changes in grade configurations
- ✓ Choice/charter/private schools
- ✓ Expansions to municipal infrastructure
- ✓ Municipal comprehensive plans/zoning changes /Annexations
- ✓ Global Covid-19 Pandemic



# Student Population and Trends Variables

## Guilford County's Historical Population Patterns

Population		Under 5 Years	5 to 19 Years	20 to 64 Years	65 Years or Over	Total Population	Median Age
Guilford County	2000	27,300	86,171	258,298	49,279	421,048	35.1
	2010	30,639	101,325	296,319	60,123	488,406	36.3
	2020	29,159	108,808	316,091	87,241	541,299	37.6
	Trend						

## Current and Future Guilford County School-Aged Population

Age Group	2024	2029
Ages 5-18	94,155	89,714

## Building Permits for Single/Multi-Family Dwellings\*

Single-Family	Multi-Family
1,214	2,053

Source: SOCDS Building Permits Database  
(\*preliminary through October 2024)

## Birth Rates

Resident Live Birth Counts	
Year	Guilford County
2018	6,115
2019	6,045
2020	5,927
2021	5,794
2022	5,883
2023	5,738

Source: North Carolina Department of Health and Human Services



# Student Enrollment Projections

# Projected Student Enrollment in Guilford County Schools

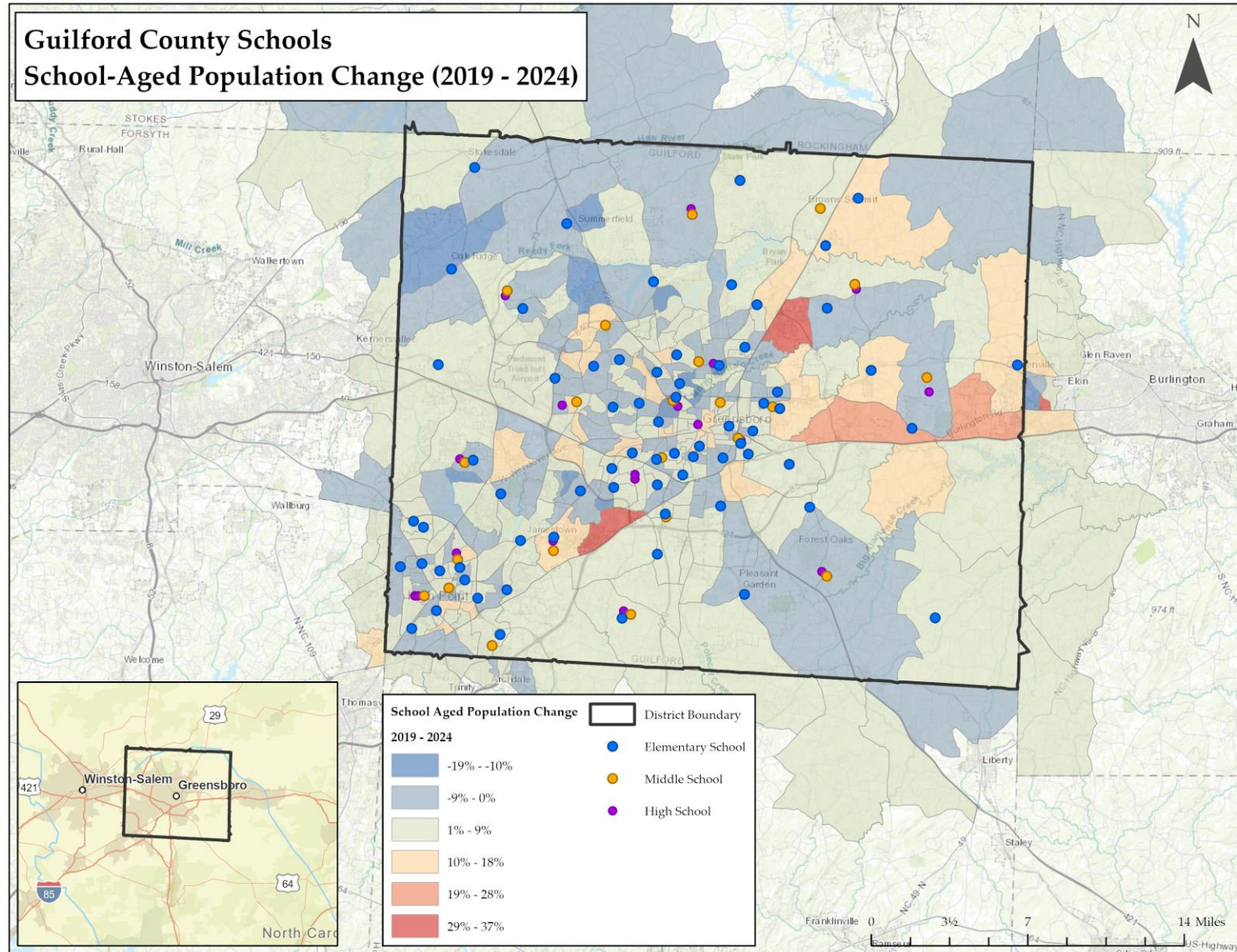
**Projected Enrollment - Recommended - District-wide**

Grade	2025-26	2026-27	2027-28	2028-29	2029-30	2030-31	2031-32	2032-33	2033-34	2034-35
K	4,559	4,403	4,447	4,385	4,408	4,408	4,408	4,408	4,408	4,408
1	4,757	4,680	4,531	4,574	4,510	4,536	4,536	4,536	4,536	4,536
2	4,821	4,833	4,758	4,606	4,653	4,584	4,612	4,612	4,612	4,612
3	4,964	4,855	4,865	4,785	4,638	4,682	4,607	4,645	4,645	4,645
4	5,035	5,026	4,914	4,933	4,842	4,699	4,743	4,672	4,707	4,707
5	4,790	5,031	5,028	4,920	4,940	4,855	4,706	4,749	4,678	4,710
6	5,022	4,762	5,017	4,998	4,890	4,906	4,824	4,683	4,726	4,652
7	4,960	5,045	4,781	5,031	5,014	4,902	4,927	4,831	4,700	4,746
8	5,137	5,045	5,122	4,857	5,113	5,103	4,980	5,006	4,917	4,783
9	5,511	5,862	5,758	5,860	5,544	5,835	5,831	5,685	5,711	5,607
10	5,549	5,129	5,449	5,365	5,447	5,171	5,443	5,443	5,291	5,337
11	5,505	5,335	4,927	5,239	5,163	5,229	4,966	5,238	5,236	5,091
12	5,187	5,114	4,960	4,583	4,868	4,803	4,865	4,616	4,875	4,876
13	53	53	53	53	53	53	53	53	53	53
EC**	108	108	108	108	108	108	108	108	108	108
<b>K - 12 Total</b>	<b>65,797</b>	<b>65,120</b>	<b>64,557</b>	<b>64,136</b>	<b>64,030</b>	<b>63,713</b>	<b>63,448</b>	<b>63,124</b>	<b>63,042</b>	<b>62,710</b>

Based on the recommended projected enrollment, student enrollment in the Guilford County Schools is projected to decrease from 66,474 in the 2024-25 school year to 62,710 students in the 2034-35 school year.

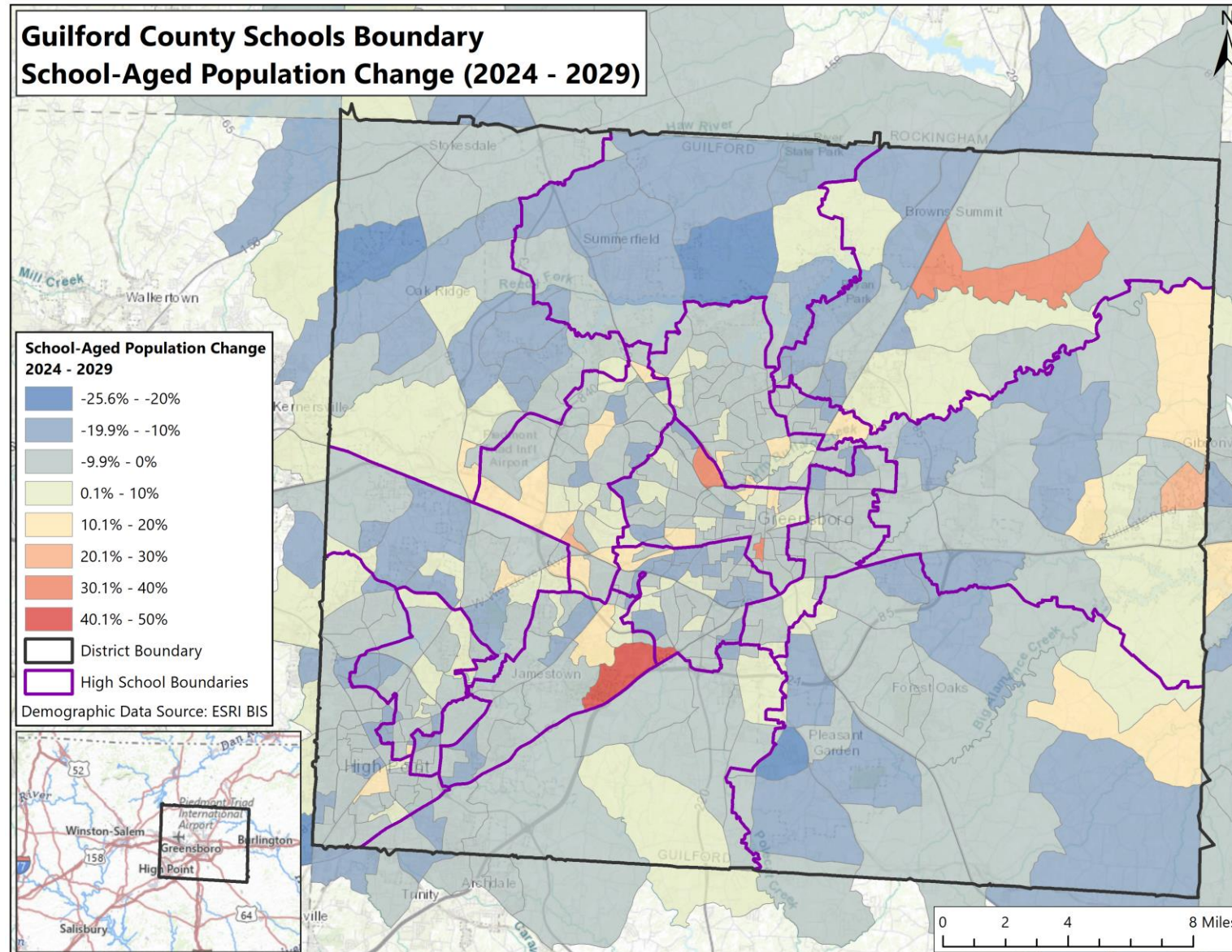
# U.S. Census Block Group Projected Changes in School-Aged Population

School-aged population change in the U.S. Census block groups within/around the Guilford County Schools boundary. Population changes are based on **2019** and **2024** estimates.



# U.S. Census Block Group Projected Changes in School-Aged Population

School-aged population change in the U.S. Census block groups within/around the Guilford County Schools boundary. Population changes are based on **2024** and **2029** estimates.



# 2018 Projected Enrollment by High School Boundary

	2019-20	2020-21	2021-22	2022-23	2023-24	2024-25	2025-26	2026-27	2027-28	2028-29
Andrews High School	3,118	3,102	3,096	3,108	3,079	3,079	3,063	3,059	3,051	3,051
Dudley High School	4,765	4,758	4,713	4,726	4,709	4,674	4,633	4,590	4,539	4,520
Eastern Guilford High School	5,460	5,544	5,608	5,679	5,689	5,639	5,610	5,568	5,497	5,518
Grimsley High School	4,802	4,874	4,938	5,034	5,034	5,049	5,058	5,059	5,080	5,127
High Point Central High School	5,383	5,346	5,311	5,285	5,286	5,219	5,162	5,103	5,094	5,090
Northeast Guilford High School	4,274	4,250	4,229	4,272	4,256	4,256	4,262	4,255	4,228	4,212
Northern Guilford High School	3,703	3,709	3,731	3,747	3,771	3,793	3,858	3,873	3,913	3,899
Northwest Guilford High School	6,583	6,629	6,694	6,800	6,844	6,925	6,975	7,030	6,996	7,025
Page High School	5,363	5,300	5,241	5,204	5,179	5,139	5,090	5,058	5,060	5,076
Ragsdale High School	4,811	4,816	4,818	4,828	4,805	4,785	4,779	4,757	4,749	4,770
Smith High School	7,125	7,203	7,233	7,299	7,334	7,287	7,259	7,219	7,209	7,224
Southeast Guilford High School	4,091	4,072	4,057	4,088	4,047	4,051	4,016	4,008	4,045	4,076
Southern Guilford High School	3,716	3,742	3,729	3,763	3,783	3,759	3,773	3,747	3,741	3,774
Southwest Guilford High School	5,385	5,460	5,567	5,633	5,640	5,677	5,662	5,665	5,677	5,662
Western Guilford High School	4,494	4,492	4,516	4,568	4,544	4,535	4,546	4,514	4,515	4,503
Out of District*	244	241	232	232	214	203	194	182	177	173
<b>Total</b>	<b>73,317</b>	<b>73,538</b>	<b>73,713</b>	<b>74,266</b>	<b>74,214</b>	<b>74,070</b>	<b>73,940</b>	<b>73,687</b>	<b>73,571</b>	<b>73,700</b>

# 2025 Projected Enrollment by High School Boundary

Projected # of Students by Boundary of Residence – Recommended (Includes PK Students)

	2025-26	2027-28	2027-28	2028-29	2029-30	2030-31	2031-32	2032-33	2033-34	2034-35	Trend
Andrews High School	2,575	2,523	2,523	2,498	2,490	2,457	2,434	2,406	2,388	2,382	
Dudley High School	4,277	4,196	4,196	4,161	4,144	4,114	4,120	4,081	4,087	4,093	
Eastern Guilford High School	5,316	5,294	5,214	5,203	5,233	5,211	5,200	5,194	5,202	5,208	
Grimsley High School	4,697	4,701	4,720	4,735	4,747	4,780	4,761	4,796	4,792	4,765	
High Point Central High School	4,755	4,686	4,656	4,648	4,628	4,579	4,549	4,501	4,474	4,431	
Northeast Guilford High School	4,126	4,096	4,045	3,994	4,009	3,996	4,036	4,057	4,075	4,088	
Northern Guilford High School	3,283	3,247	3,212	3,175	3,175	3,165	3,139	3,128	3,133	3,108	
Northwest Guilford High School	6,150	6,162	6,079	6,033	6,027	6,015	6,045	6,016	6,021	5,989	
Page High School	4,852	4,786	4,776	4,755	4,783	4,785	4,759	4,723	4,751	4,764	
Ragsdale High School	4,128	4,025	3,941	3,888	3,803	3,725	3,676	3,626	3,602	3,550	
Smith High School	6,156	6,028	5,928	5,800	5,749	5,669	5,599	5,523	5,471	5,400	
Southeast Guilford High School	3,760	3,701	3,680	3,683	3,659	3,667	3,649	3,627	3,632	3,595	
Southern Guilford High School	3,309	3,277	3,237	3,224	3,220	3,179	3,150	3,141	3,120	3,102	
Southwest Guilford High School	5,035	4,974	4,959	4,951	4,988	4,990	4,997	5,001	5,014	4,996	
Western Guilford High School	4,777	4,771	4,790	4,790	4,771	4,781	4,750	4,699	4,675	4,640	
Out of District*	170	168	170	167	173	169	173	174	174	168	
<b>Total</b>	<b>67,366</b>	<b>66,689</b>	<b>66,126</b>	<b>65,705</b>	<b>65,599</b>	<b>65,282</b>	<b>65,017</b>	<b>64,693</b>	<b>64,611</b>	<b>64,279</b>	

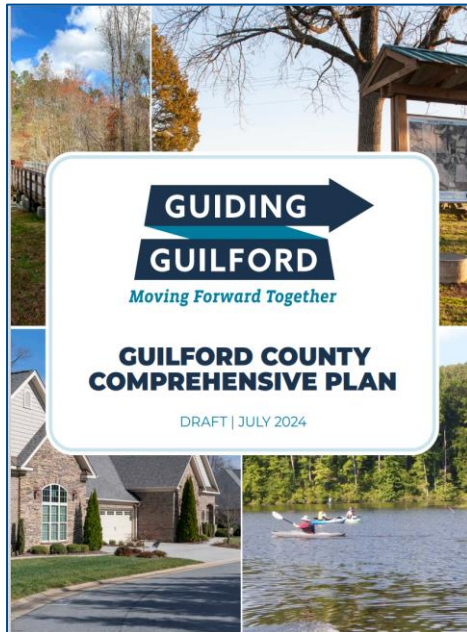
Sources: Woolpert

# Community Partners

## Housing & Migration Impact

### Guilford County

Comprehensive Plan  
2024 (Draft)



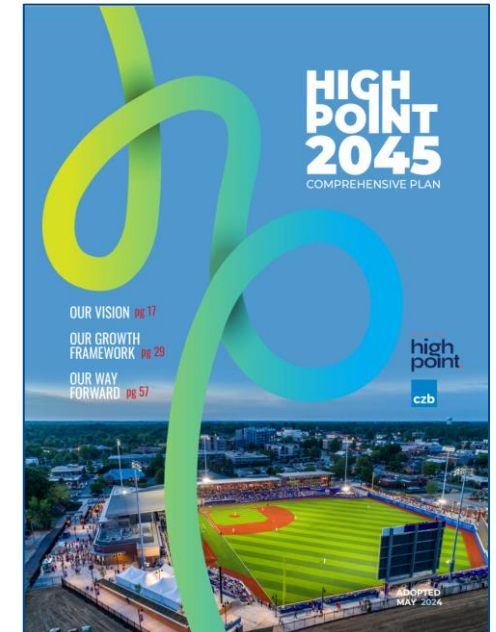
### City of Greensboro

2040 Comprehensive Plan (2020)  
& 2025 Growth and Development Trends



### City of High Point

City of High Point  
2045 Comprehensive Plan (2024)



# Next Steps



**Analyze Updated Enrollment Projections**



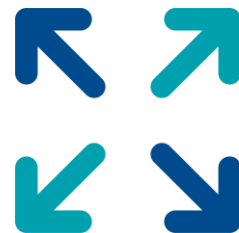
**Work on Pre-K & Kindergarten Enrollment Opportunities**



**Align Academic Programs Across ALL Grade Levels**



**Focus on School Transition Years**



**Expand Access to College Credit & Industry Credentials**



**Leverage Collaboration with Community Partners**

# Questions & Dialogue

