



Addressing Utilization Concerns for 2027-2028 & Beyond

Facilities Committee Meeting
June 10, 2025

Review of Options to Address School Utilization Concerns

2027-28
School Year &
Beyond

- 1 Presentation of the Annual Membership Forecast (1-year and 10-year projections)
- 2 Review of Projected Crowding for the Next School Year
- 3 Review of Capital Improvement Plan (CIP) Updates (7-year plan)
- 4 Preparation of the Annual Enrollment Plan
- 5 Review and Approval of Capped Schools due to Overcrowding Concerns
- 6 Review of Options to Address Other School Utilization Concerns

1. Review capped schools list and other overcrowded areas to identify which schools are not addressed in the CIP or the enrollment plan
2. Identify schools that are not operating on a multi-track year-round calendar, but have long-term crowding concerns
3. Identify schools that are operating on a year-round calendar, but do not have long-term crowding concerns
4. Host engagement sessions for families and school staff to gain additional feedback and insight
5. Make recommendations to the Board based on data and feedback collected

Capped Schools 2025-2026 School Year

2027-28
School Year &
Beyond

Capped Elementary Schools*		Capped Middle Schools*	
● Abbotts Creek	Oakview	● Apex Friendship	
● Alston Ridge (MTYR)	● Olive Chapel (MTYR)	● Mills Park (FP)	
● Apex Friendship	● Parkside (MTYR)		
● Beaverdam	● River Bend	Capped High Schools*	
● Cedar Fork	● Rogers Lane	● Apex Friendship (FP)	
● Holly Grove (MTYR)	● Scotts Ridge	● Heritage	
● Holly Ridge	● Weatherstone	● Panther Creek	
● Hortons Creek	● White Oak		
● Northwoods			

*as of February 7, 2025
(MTYR) = Multi-track Year-round
(FP) = Feeder Pattern Cap

- Impacted during 2025-26 enrollment plan
- Projected to be impacted by current CIP
- Impact from previous plans with favorable results
- Proximate seats available or anticipated natural reduction in enrollment

Projected Overcrowded Schools 2025-2026 School Year

2027-28
School Year &
Beyond

- Barwell Rd ES
- Bryan Rd ES
- Combs ES
- Conn ES
- Hodge Rd ES
- Kingswood ES
- Lacy ES

- Lake Myra ES
- North Ridge ES
- Olds ES
- Root ES
- Stough ES
- Wakelon ES
- Zebulon ES

● Magnet School

● Projected to be impacted by current CIP

● Converted to MTYR for 2026-27

● Proximate seats available or anticipated natural reduction in enrollment

Schools listed above are projected to be crowded at 110% or greater

New Schools Included in the CIP

Review

School Name	2025-26	2026-27	2027-28	2028-29	2029-30	2030-31	2031-32
Bowling Road ES	E49/ 920333						
Pleasant Plains ES	E53 ES/ 920537						
Rex Road ES	E52 ES/ 920541						
Felton Grove HS	H12 HS/ 920418						
Hilltop Needmore ES	Fuquay-Varina ES*	E44 ES*					
Morrisville HS			H14 HS*				
NEW (Parkside) MS/ Wake EC of Infor. & Biotech.					M19 MS*/ H11 EC*		
Poole Road ES						E28 ES*	
Marshburn Road ES					Wendell ES*	Wendell ES*	E57 ES*
New School: A new school opened/ opening in the current school year that already has an approved attendance area.							
New School: A new school opening with a unique base attendance area that requires an approved attendance area.							
Swing Space: A new school serving as a swing space for an existing school's renovation before opening with its own population.							
Future School: A new future school site that will open with a unique base attendance area.							

Review of Options to Address School Utilization Concerns

- 1 Presentation of the Annual Membership Forecast (1-year and 10-year projections)
- 2 Review of Projected Crowding for the Next School Year
- 3 Review of Capital Improvement Plan (CIP) Updates (7-year plan)
- 4 Preparation of the Annual Enrollment Plan
- 5 Review and Approval of Capped Schools due to Overcrowding Concerns
- 6 Review of Options to Address Other School Utilization Concerns

1. Review capped schools list and other overcrowded areas to identify which schools are not addressed in the CIP or the enrollment plan
2. Identify schools that are not operating on a multi-track year-round calendar, but have long-term crowding concerns
3. Identify schools that are operating on a year-round calendar, but do not have long-term crowding concerns
4. Host engagement sessions for families and school staff to gain additional feedback and insight
5. Make recommendations to the Board based on data and feedback collected

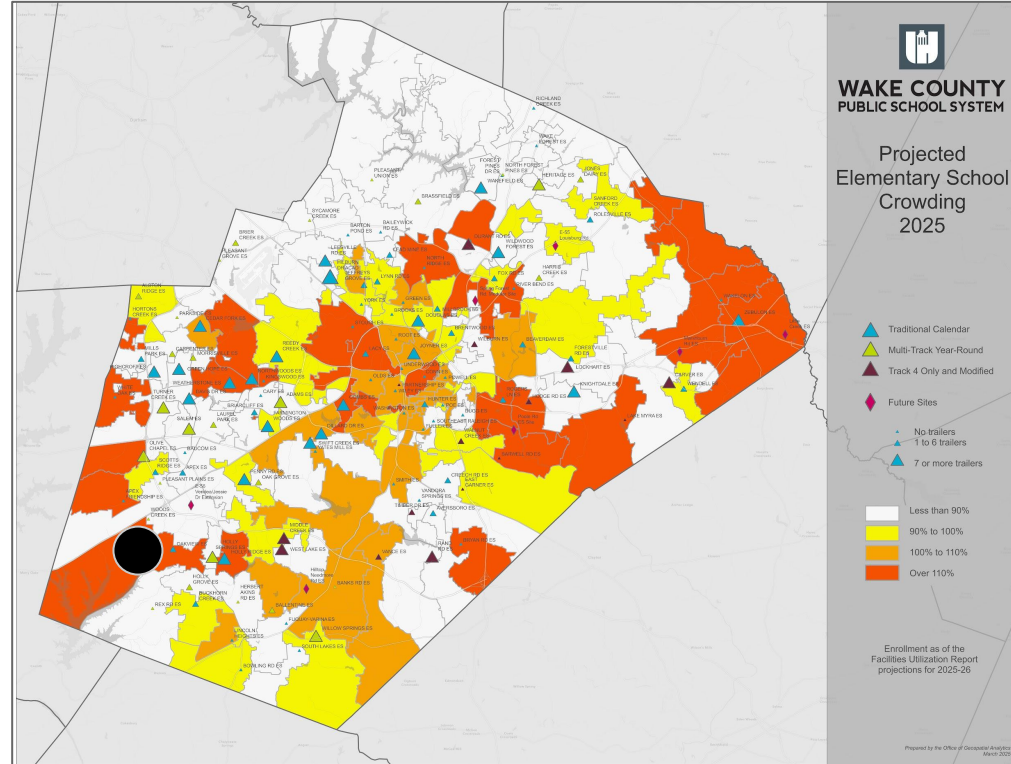
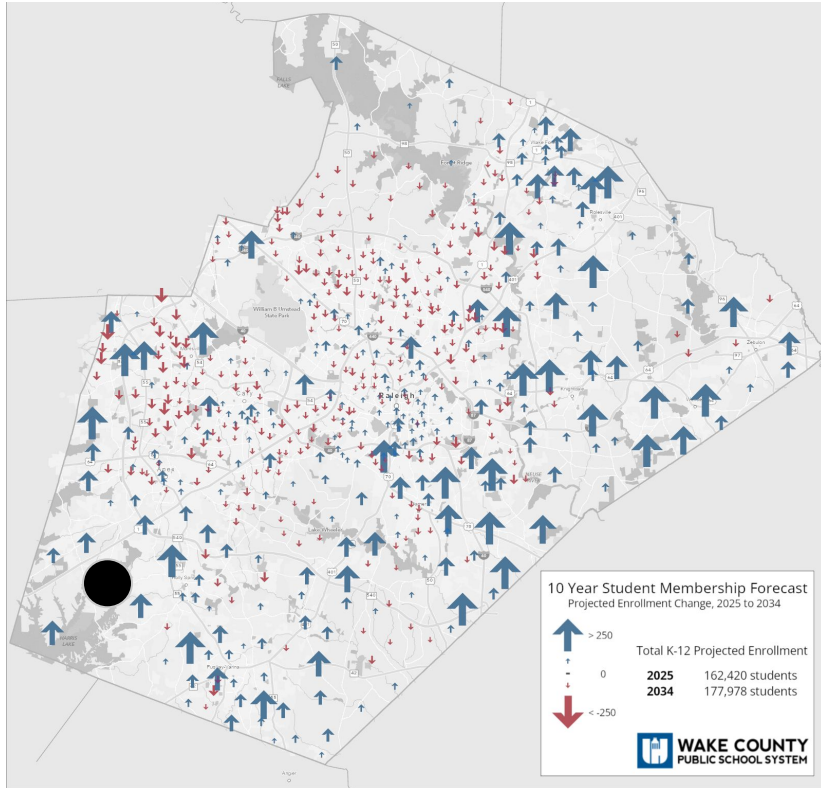
Not operating on a multi-track, but have long-term crowding concerns:

Oakview Elementary:

- Projected to be 117% crowded for 2025-26
- Current base is projected to continue to grow (per 10-year forecast)
- No additional support from the CIP anticipated at this time

Calendar Conversions for 2027-2028 and Beyond

Review



New Schools Included in the CIP

Review

School Name	2025-26	2026-27	2027-28	2028-29	2029-30	2030-31	2031-32
Bowling Road ES	E49/ 920333						
Pleasant Plains ES	E53 ES/ 920537						
Rex Road ES	E52 ES/ 920541						
Felton Grove HS	H12 HS/ 920418						
Hilltop Needmore ES	Fuquay-Varina ES*	E44 ES*					
Morrisville HS			H14 HS*				
NEW (Parkside) MS/ Wake EC of Infor. & Biotech.					M19 MS*/ H11 EC*		
Poole Road ES						E28 ES*	
Marshburn Road ES					Wendell ES*	Wendell ES*	E57 ES*
New School: A new school opened/ opening in the current school year that already has an approved attendance area.							
New School: A new school opening with a unique base attendance area that requires an approved attendance area.							
Swing Space: A new school serving as a swing space for an existing school's renovation before opening with its own population.							
Future School: A new future school site that will open with a unique base attendance area.							

Renovation Projects Included in the CIP

Review

School Name	2025-26	2026-27	2027-28	2028-29	2029-30	2030-31	2031-32
Swift Creek ES		Complete*					
Brentwood ES			Complete*				
Lockhart ES			Complete*				
North Garner MS				Complete*			
Athens Drive Magnet HS				Complete*			
Briarcliff ES					Complete*		
East Garner Magnet MS					Complete*		
Ligon Magnet MS					Complete*		
Cary HS						Complete*	
Wendell Magnet ES							Complete*
Zebulon Magnet MS							
Renovation Complete: School renovation substantially completed, classes resume at newly renovated campus.							
Renovation Underway: Current location under active renovation.							

Review of Options to Address School Utilization Concerns

2027-28
School Year &
Beyond

- 1 Presentation of the Annual Membership Forecast (1-year and 10-year projections)
- 2 Review of Projected Crowding for the Next School Year
- 3 Review of Capital Improvement Plan (CIP) Updates (7-year plan)
- 4 Preparation of the Annual Enrollment Plan
- 5 Review and Approval of Capped Schools due to Overcrowding Concerns
- 6 Review of Options to Address Other School Utilization Concerns

1. Review capped schools list and other overcrowded areas to identify which schools are not addressed in the CIP or the enrollment plan
2. Identify schools that are not operating on a multi-track year-round calendar, but have long-term crowding concerns
3. Identify schools that are operating on a year-round calendar, but do not have long-term crowding concerns
4. Host engagement sessions for families and school staff to gain additional feedback and insight
5. Make recommendations to the Board based on data and feedback collected

Calendar Conversions for 2027-2028 and Beyond

2027-28
School Year &
Beyond

Operating on a multi-track, but do not have long-term crowding concerns:

- ● Brassfield ES* (projected utilization 86%)
- ● Brier Creek ES (89.4%)
- ● Heritage ES (72.7%)
- ● Heritage MS (71.7%)
- ● North Forest Pines ES (78.4%)
- ● Pleasant Union ES (81.3%)
- ● Sycamore Creek ES (84.8%)
- Feeder pattern continues to traditional for 6-12
- Feeder pattern includes MTYR schools
- Projected crowding too high for conversion at this time

* Brassfield ES feeds to Traditional, Modified and Track 4 only middle schools

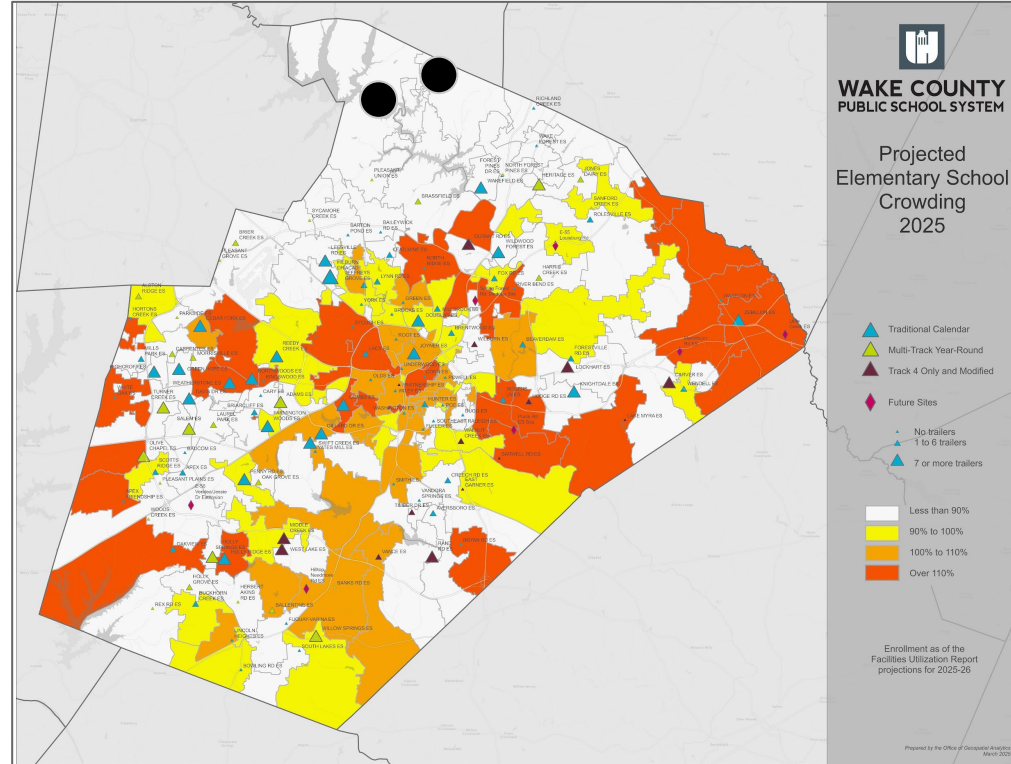
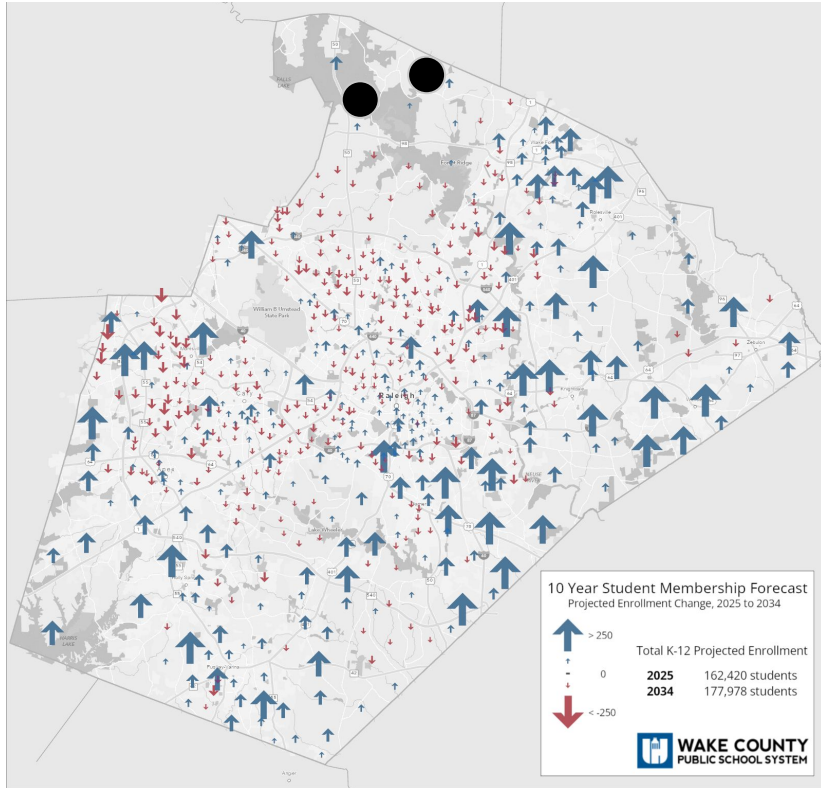
Operating on a multi-track, but do not have long-term crowding concerns:

North Forest Pines ES (78.4%) & Pleasant Union ES (81.3%)

- Feed to traditional middle schools only
- Projected to be underutilized (as a multi-track year-round)
- Projected long-term growth not anticipated to warrant need for additional capacity in the area

Calendar Conversions for 2027-2028 and Beyond

Review



1

Presentation of the Annual Membership Forecast (1-year and 10-year projections)

2

Review of Projected Crowding for the Next School Year

3

Review of Capital Improvement Plan (CIP) Updates (7-year plan)

4

Preparation of the Annual Enrollment Plan

5

Review and Approval of Capped Schools due to Overcrowding Concerns

6

Review of Options to Address Other School Utilization Concerns

Review of Options to Address Other School Utilization Concerns

2027-28
School Year

1. Review capped schools list and other overcrowded areas to identify which schools are not addressed in the CIP or the enrollment plan
2. Identify schools that are not operating on a multi-track year-round calendar, but have long-term crowding concerns
3. Identify schools that are operating on a year-round calendar, but do not have long-term crowding concerns
4. Host engagement sessions for families and school staff to gain additional feedback and insight
5. Make recommendations to the Board based on data and feedback collected

Calendar Conversions for 2027-2028 and Beyond *(continued)*

Next Steps:

- Meet with Area Superintendents and Principals of potentially impacted schools
- Meet with potentially impacted schools' staff to address any questions or concerns
- Engage the public through ThoughtExchange and virtual public engagement sessions



Questions?

Feedback, Thoughts & Ideas...

www.wcpss.net/calendarconversion