



Calendar Conversions for 2027-2028

Board Work Session
August 5, 2025

Link to Resources

www.wcpss.net/calendarconversion

1

Presentation of the Annual Membership Forecast (1-year and 10-year projections)

2

Review of Projected Crowding for the Next School Year

3

Review of Capital Improvement Plan (CIP) Updates (7-year plan)

4

Preparation of the Annual Enrollment Plan

5

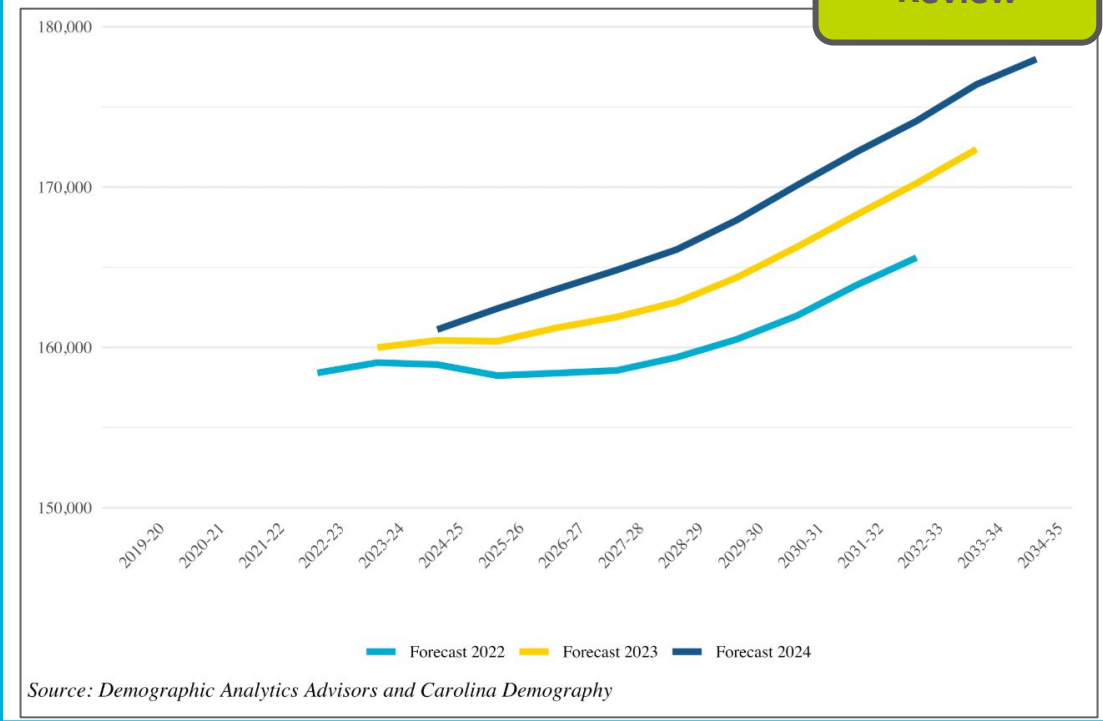
Review and Approval of Capped Schools due to Overcrowding Concerns

6

Review of Options to Address Other School Utilization Concerns

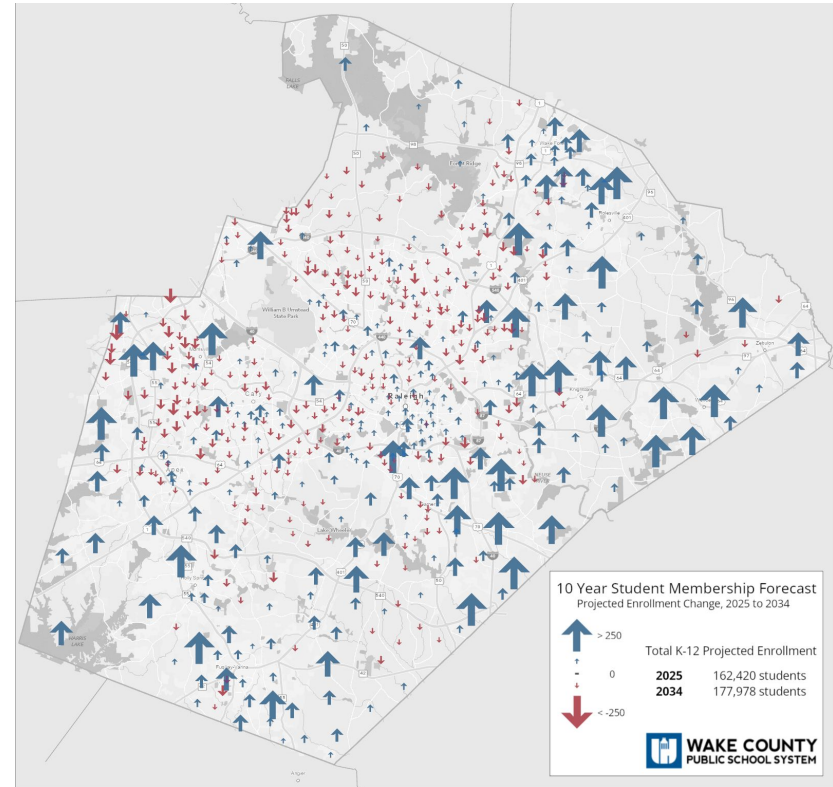
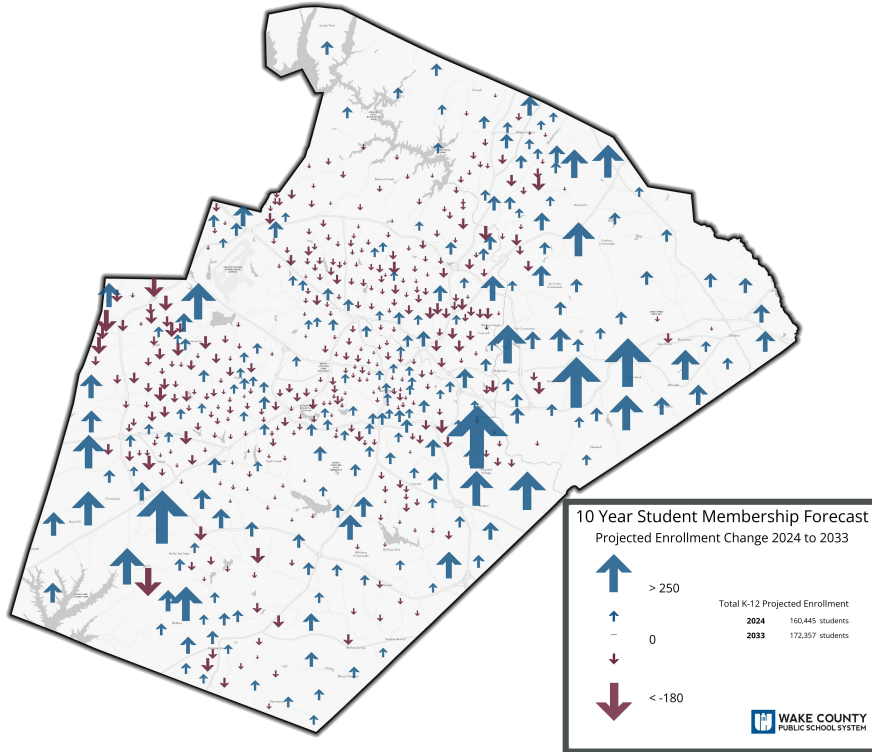
Presentation of the Annual Membership Forecast (1-year and 10-year projections)

Review



Forecast Comparison

Review



1

Presentation of the Annual Membership Forecast (1-year and 10-year projections)

2

Review of Projected Crowding for the Next School Year

3

Review of Capital Improvement Plan (CIP) Updates (7-year plan)

4

Preparation of the Annual Enrollment Plan

5

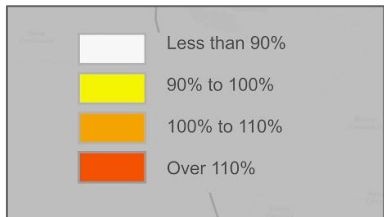
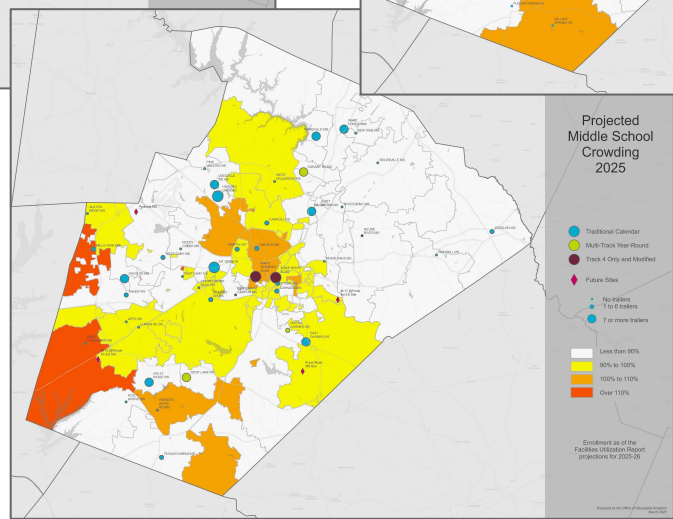
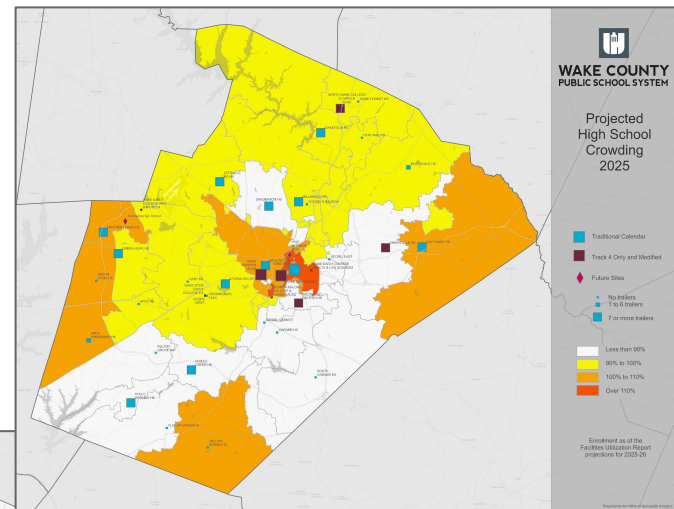
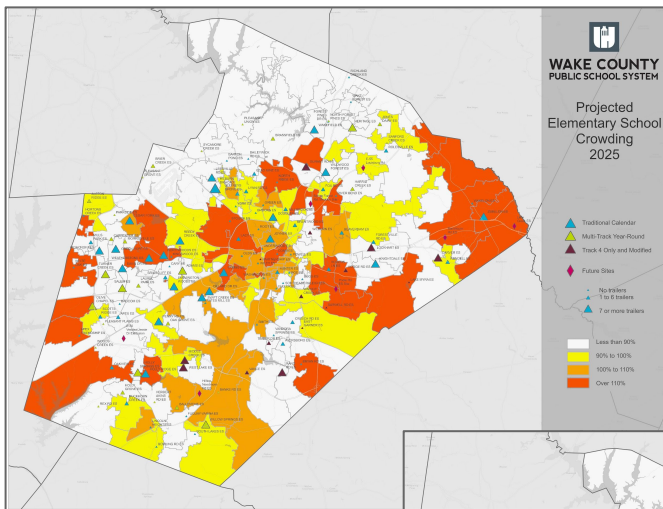
Review and Approval of Capped Schools due to Overcrowding Concerns

6

Review of Options to Address Other School Utilization Concerns

Review of Projected Crowding for the Next School Year

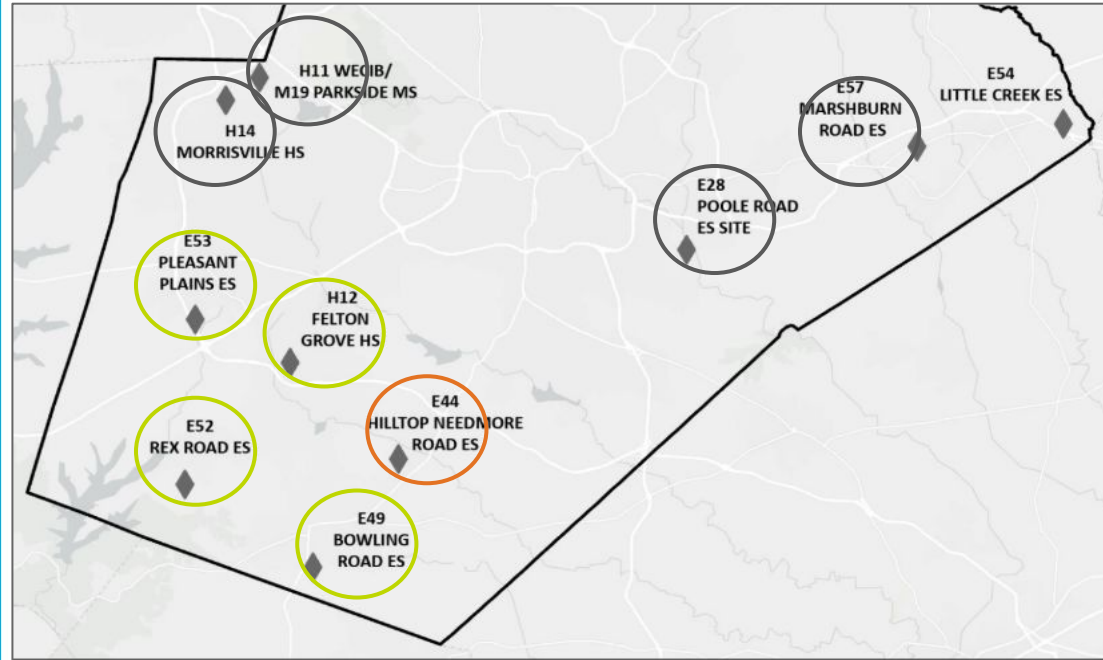
1. **Student Membership Forecast:** A 10-year membership projection is shared with Student Assignment to support planning efforts.
2. **Magnet Application Process:** The Office of School Choice, Planning & Assignment manages the application and lottery process for magnet schools.
3. **Development of Projected Enrollments:** Student Assignment develops projected student enrollments based on enrollment trends and application data for use in annual allotment processes.
4. **Facility Utilization Planning:** Projected enrollments are used to inform the 2025-26 Facility Utilization Report (FUR), ensuring alignment with capacity planning and resource allocation.



Review

Review of Capital Improvement Plan (CIP) Updates (7-year plan)

- 1 Presentation of the Annual Membership Forecast (1-year and 10-year projections)
- 2 Review of Projected Crowding for the Next School Year
- 3 Review of Capital Improvement Plan (CIP) Updates (7-year plan)
- 4 Preparation of the Annual Enrollment Plan
- 5 Review and Approval of Capped Schools due to Overcrowding Concerns
- 6 Review of Options to Address Other School Utilization Concerns



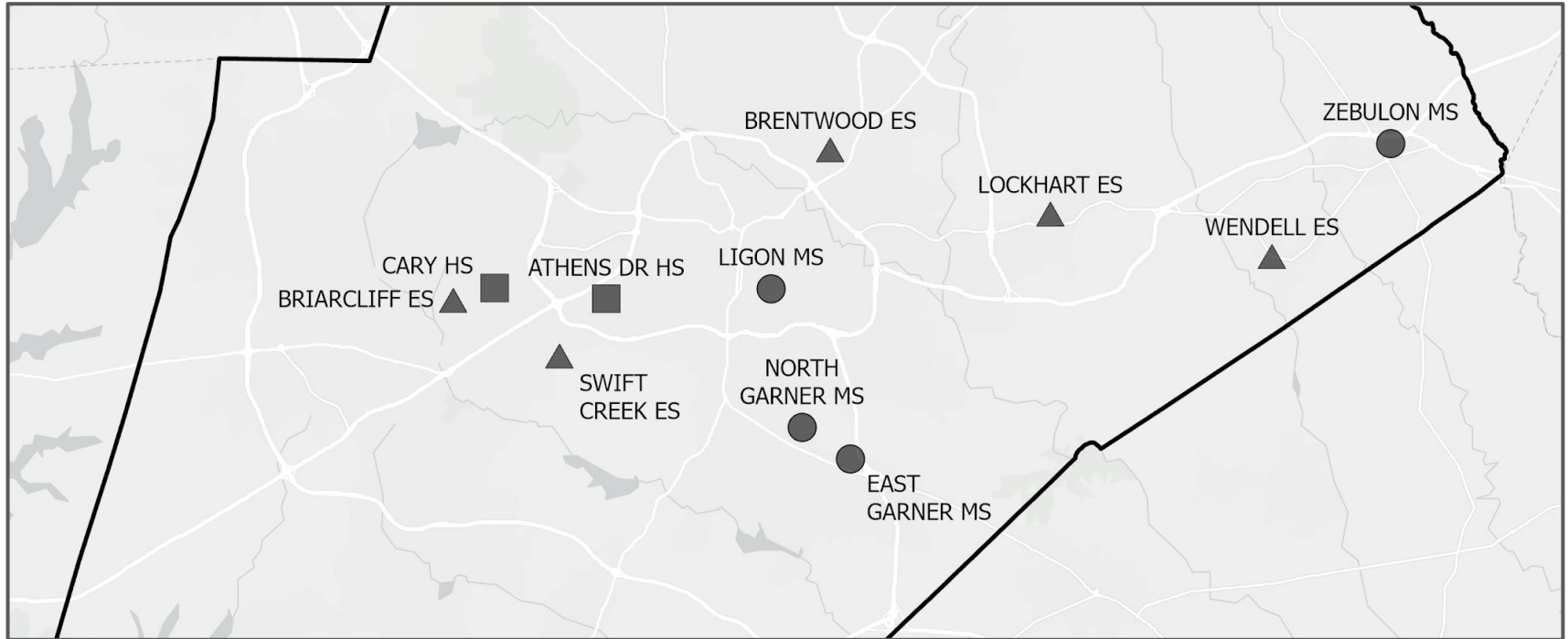
New Schools Included in the CIP

Review

School Name	2025-26	2026-27	2027-28	2028-29	2029-30	2030-31	2031-32
Bowling Road ES	E49/ 920333						
Pleasant Plains ES	E53 ES/ 920537						
Rex Road ES	E52 ES/ 920541						
Felton Grove HS	H12 HS/ 920418						
Hilltop Needmore ES	Fuquay-Varina ES*	E44 ES*					
Morrisville HS			H14 HS*				
NEW (Parkside) MS/ Wake EC of Infor. & Biotech.					M19 MS*/ H11 EC*		
Poole Road ES						E28 ES*	
Marshburn Road ES					Wendell ES*	Wendell ES*	E57 ES*
New School: A new school opened/ opening in the current school year that already has an approved attendance area.							
New School: A new school opening with a unique base attendance area that requires an approved attendance area.							
Swing Space: A new school serving as a swing space for an existing school's renovation before opening with its own population.							
Future School: A new future school site that will open with a unique base attendance area.							

Renovation Projects Included in the CIP

Review



Renovation Projects Included in the CIP

Review

School Name	2025-26	2026-27	2027-28	2028-29	2029-30	2030-31	2031-32
Swift Creek ES		Complete*					
Brentwood ES			Complete*				
Lockhart ES			Complete*				
North Garner MS				Complete*			
Athens Drive Magnet HS				Complete*			
Briarcliff ES					Complete*		
East Garner Magnet MS					Complete*		
Ligon Magnet MS					Complete*		
Cary HS						Complete*	
Wendell Magnet ES							Complete*
Zebulon Magnet MS							
Renovation Complete: School renovation substantially completed, classes resume at newly renovated campus.							
Renovation Underway: Current location under active renovation.							

- 1 Presentation of the Annual Membership Forecast (1-year and 10-year projections)
- 2 Review of Projected Crowding for the Next School Year
- 3 Review of Capital Improvement Plan (CIP) Updates (7-year plan)
- 4 Preparation of the Annual Enrollment Plan
- 5 Review and Approval of Capped Schools due to Overcrowding Concerns
- 6 Review of Options to Address Other School Utilization Concerns

Preparation of the Annual Enrollment Plan

Review



Public Engagement

Board Review of Annual Goals

Plan Development & Presentation

Review and Approval of Capped Schools due to Overcrowding Concerns

Review

- 1 Presentation of the Annual Membership Forecast (1-year and 10-year projections)
- 2 Review of Projected Crowding for the Next School Year
- 3 Review of Capital Improvement Plan (CIP) Updates (7-year plan)
- 4 Preparation of the Annual Enrollment Plan
- 5 Review and Approval of Capped Schools due to Overcrowding Concerns
- 6 Review of Options to Address Other School Utilization Concerns

Capped Elementary Schools*		Capped Middle Schools*
Abbotts Creek	Oakview	Apex Friendship
Alston Ridge (MTYR)	Olive Chapel (MTYR)	Mills Park (FP)
Apex Friendship	Parkside (MTYR)	
Beaverdam	River Bend	Capped High Schools*
Cedar Fork	Rogers Lane	Apex Friendship (FP)
Holly Grove (MTYR)	Scotts Ridge	Heritage
Holly Ridge	Weatherstone	Panther Creek
Hortons Creek	White Oak	
Northwoods		

**as of February 7, 2025
(MTYR) = Multi-track Year-round
(FP) = Feeder Pattern Cap*

1

Presentation of the Annual Membership Forecast (1-year and 10-year projections)

2

Review of Projected Crowding for the Next School Year

3

Review of Capital Improvement Plan (CIP) Updates (7-year plan)

4

Preparation of the Annual Enrollment Plan

5

Review and Approval of Capped Schools due to Overcrowding Concerns

6

Review of Options to Address Other School Utilization Concerns

Review of Options to Address Other School Utilization Concerns

1. Review capped schools list and other overcrowded areas to identify which schools are not addressed in the CIP or the enrollment plan
2. Identify schools that are not operating on a multi-track year-round calendar, but have long-term crowding concerns
3. Identify schools that are operating on a year-round calendar, but do not have long-term crowding concerns
4. Host engagement sessions for families and school staff to gain additional feedback and insight
5. Make recommendations to the Board based on data and feedback collected

**2027-28
School Year**

Capped Schools 2025-2026 School Year

2027-28
School Year

Capped Elementary Schools*		Capped Middle Schools*	
Abbotts Creek	Oakview	Apex Friendship	
Alston Ridge (MTYR)	Olive Chapel (MTYR)	Mills Park (FP)	
Apex Friendship	Parkside (MTYR)		
Beaverdam	River Bend		
Cedar Fork	Rogers Lane		
Holly Grove (MTYR)	Scotts Ridge		
Holly Ridge	Weatherstone		
Hortons Creek	White Oak		
Northwoods			

Capped High Schools*	
Apex Friendship (FP)	
Heritage	
Panther Creek	

**as of February 7, 2025
(MTYR) = Multi-track Year-round
(FP) = Feeder Pattern Cap*

Impacted during 2025-26 enrollment plan

Projected to be impacted by current CIP

Impact from previous plans with favorable results

Proximate seats available or anticipated natural reduction in enrollment

1

Presentation of the Annual Membership Forecast (1-year and 10-year projections)

2

Review of Projected Crowding for the Next School Year

3

Review of Capital Improvement Plan (CIP) Updates (7-year plan)

4

Preparation of the Annual Enrollment Plan

5

Review and Approval of Capped Schools due to Overcrowding Concerns

6

Review of Options to Address Other School Utilization Concerns

Review of Options to Address Other School Utilization Concerns

2027-28
School Year

1. Review capped schools list and other overcrowded areas to identify which schools are not addressed in the CIP or the enrollment plan
2. Identify schools that are not operating on a multi-track year-round calendar, but have long-term crowding concerns
3. Identify schools that are operating on a year-round calendar, but do not have long-term crowding concerns
4. Host engagement sessions for families and school staff to gain additional feedback and insight
5. Make recommendations to the Board based on data and feedback collected

Capped Schools 2025-2026 School Year

**2027-28
School Year**

Capped Elementary Schools*		Capped Middle Schools*	
● Abbotts Creek	● Oakview	● Apex Friendship	
● Alston Ridge (MTYR)	● Olive Chapel (MTYR)	● Mills Park (FP)	
● Apex Friendship	● Parkside (MTYR)		
● Beaverdam	● River Bend		
● Cedar Fork	● Rogers Lane		
● Holly Grove (MTYR)	● Scotts Ridge		
● Holly Ridge	● Weatherstone		
● Hortons Creek	● White Oak		
● Northwoods			

Capped High Schools*	
● Apex Friendship (FP)	
● Heritage	
● Panther Creek	

**as of February 7, 2025
(MTYR) = Multi-track Year-round
(FP) = Feeder Pattern Cap*

- Impacted during 2025-26 enrollment plan
- Projected to be impacted by current CIP
- Impact from previous plans with favorable results
- Proximate seats available or anticipated natural reduction in enrollment

1

Presentation of the Annual Membership Forecast (1-year and 10-year projections)

2

Review of Projected Crowding for the Next School Year

3

Review of Capital Improvement Plan (CIP) Updates (7-year plan)

4

Preparation of the Annual Enrollment Plan

5

Review and Approval of Capped Schools due to Overcrowding Concerns

6

Review of Options to Address Other School Utilization Concerns

Review of Options to Address Other School Utilization Concerns

2027-28
School Year

1. Review capped schools list and other overcrowded areas to identify which schools are not addressed in the CIP or the enrollment plan
2. Identify schools that are not operating on a multi-track year-round calendar, but have long-term crowding concerns
3. Identify schools that are operating on a year-round calendar, but do not have long-term crowding concerns
4. Host engagement sessions for families and school staff to gain additional feedback and insight
5. Make recommendations to the Board based on data and feedback collected

Calendar Conversions for 2027-2028 and Beyond

2027-28
School Year

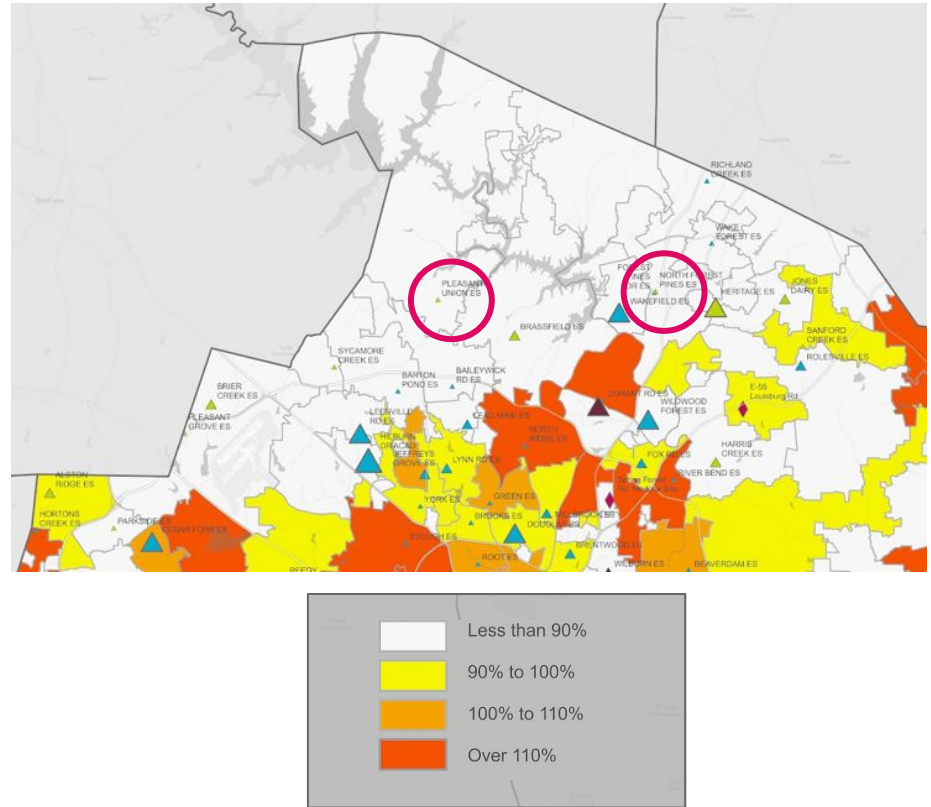
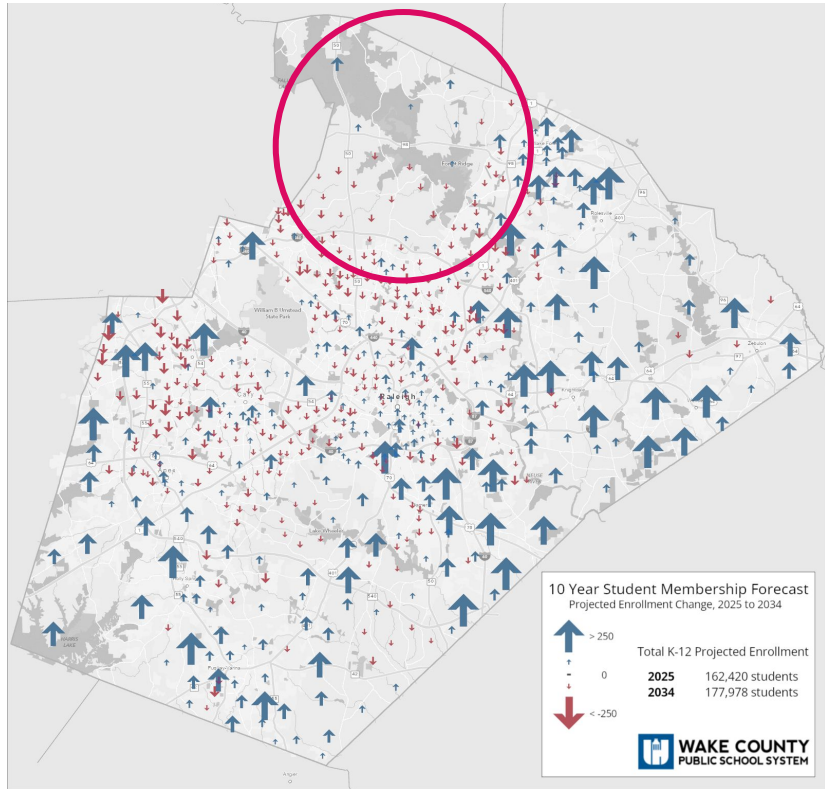
Operating on a multi-track, but do not have long-term crowding concerns:

- Brassfield ES* (projected utilization 86%)
- Brier Creek ES (89.4%)
- Heritage ES (72.7%)
- Heritage MS (71.7%)
- North Forest Pines ES (78.4%)
- Pleasant Union ES (81.3%)
- Sycamore Creek ES (84.8%)
- Feeder pattern continues to traditional for 6-12
- Feeder pattern includes MTYR schools
- Projected crowding too high for conversion at this time

* Brassfield ES feeds to Traditional, Modified and Track 4 only middle schools

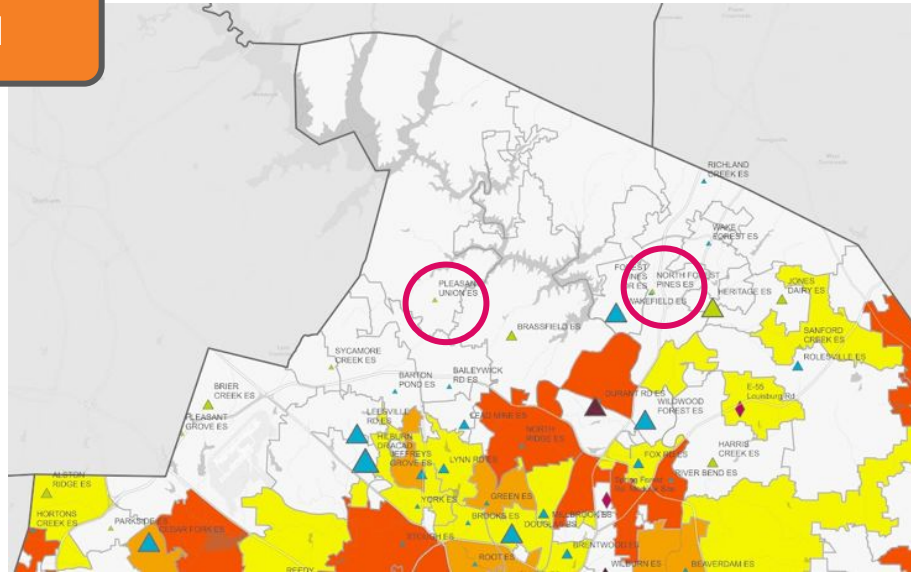
Forecast and Crowding Projections

Updated



Updated

Projected Elementary School Crowding: 2025-26



- *Pleasant Grove- 48%
- *Sycamore Creek- 85%
- Barton Pond- 82%
- Baileywick- 82%
- Wakefield- 75%
- *North Forest Pines- 78%
- Durant Road- 75%
- *Heritage- 73%

- *Brier Creek- 89%
- Leesville Road- 80%
- *Pleasant Union- 81%
- *Brassfield- 86%
- Forest Pines- 74%
- Richland Creek- 86
- Wake Forest- 82%

*multi-track year-round


**WAKE COUNTY
PUBLIC SCHOOL SYSTEM**

Projected Elementary School Crowding 2025

-  Traditional Calendar
-  Multi-Track Year-Round
-  Track 4 Only and Modified
-  Future Sites
-  No trailers
-  1 to 6 trailers
-  7 or more trailers
-  Less than 90%
-  90% to 100%
-  100% to 110%
-  Over 110%

Enrollment as of the
Facilities Utilization Report
projections for 2025-26

Prepared by the Office of Geographic Analytics
March 2025

1

Presentation of the Annual Membership Forecast (1-year and 10-year projections)

2

Review of Projected Crowding for the Next School Year

3

Review of Capital Improvement Plan (CIP) Updates (7-year plan)

4

Preparation of the Annual Enrollment Plan

5

Review and Approval of Capped Schools due to Overcrowding Concerns

6

Review of Options to Address Other School Utilization Concerns

Review of Options to Address Other School Utilization Concerns

2027-28
School Year

1. Review capped schools list and other overcrowded areas to identify which schools are not addressed in the CIP or the enrollment plan
2. Identify schools that are not operating on a multi-track year-round calendar, but have long-term crowding concerns
3. Identify schools that are operating on a year-round calendar, but do not have long-term crowding concerns
4. Host engagement sessions for families and school staff to gain additional feedback and insight
5. Make recommendations to the Board based on data and feedback collected

- ThoughtExchange launched- **July 1, 2025**
- Meeting with North Forest Pines ES staff- **July 9, 2025**
- Meeting with Pleasant Union ES staff- **July 18, 2025**
- North Forest Pines ES virtual public meeting- **July 23, 2025**
- Pleasant Union ES virtual public meeting- **July 29, 2025**

North Forest Pines- Parent/Guardian Feedback

Engagement

Review your current engagement statistics to understand how engaged participants are on this topic.

 Participants

133

Last activity: 0 days ago

 Thoughts

167

1.3 thoughts / participant

 Ratings

3,399

25.6 ratings / participant

 Ratings ratio 

20

Ratings / thought

 Alignment 

High

North Forest Pines- Parent/Guardian Feedback

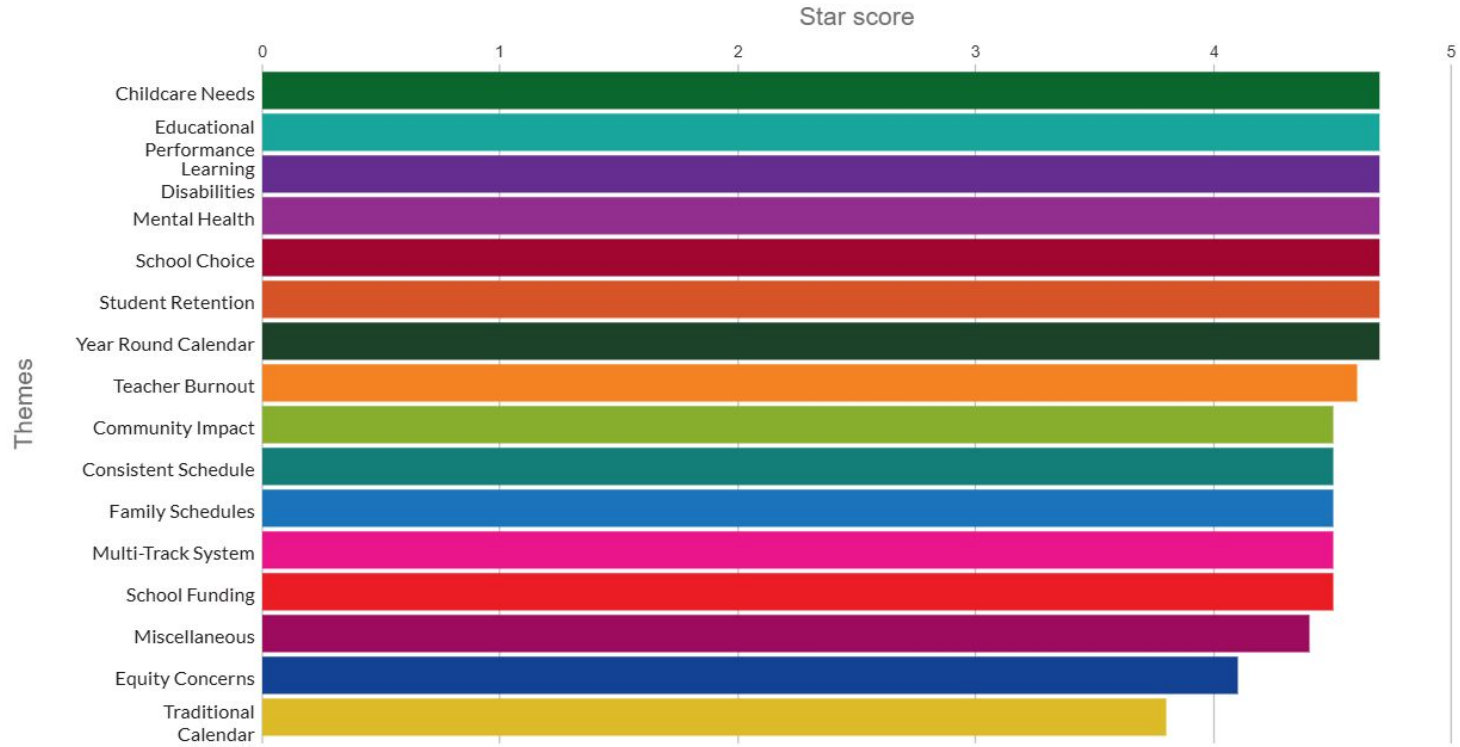
The responses reveal strong opposition to shifting North Forest Pines Elementary to a traditional calendar.

Highlights include the current year-round schedule's benefits for families' work-life balance, special needs student support, and reduced summer learning loss.

Many respondents emphasize the importance of frequent breaks for preventing burnout and maintaining academic momentum.

Concerns include the disruption of family schedules, negative impacts on students' emotional and behavioral health, potential loss of staff preferring the multi-track system, and the lack of alternate year-round options in the area, which could drive parents toward charter schools.

North Forest Pines- Parent/Guardian Feedback



ThoughtExchange Data-Parent/Guardian (NFP)

Updated

I would like the school to stay year round

It works best for my kids to have short breaks off from school so they continue to learn year round and not have such a long summer break.

- Childcare Needs
- Family Schedules

😊 Positive

👤 24

👥 Parent/ Guardia...

★★★★★ 4.7

Ranked #1 of 167



Improved mental health

Having breaks every nine weeks helps ensure that my children get the break they need to recharge and come back to school ready to learn

- Mental Health

😊 Positive

👤 24

👥 Parent/ Guardia...

★★★★★ 4.7

Ranked #2 of 167



My child learns best year round! They retain more information then when they attended a traditional school.

My child's education and mental health matters.

- Educational Performance
- Year Round Calendar

😐 Neutral

👤 24

👥 Parent/ Guardia...

★★★★★ 4.7

Ranked #3 of 167



There are many families that feel as though their young children are more emotionally stable and happier with more frequent breaks.

Elementary school especially should have a year round option for this reason.

- Family Schedules
- Year Round Calendar

😐 Neutral

👤 24

👥 Parent/ Guardia...

★★★★★ 4.7

Ranked #4 of 167




North Forest Pines- Staff Feedback


Engagement


Review your current engagement statistics to understand how engaged participants are on this topic.

 Participants
50
Last activity: 6 days ago

 Thoughts
81
1.6 thoughts / participant

 Ratings
1,300
26.0 ratings / participant

 Ratings ratio ⓘ
16
Ratings / thought

 Alignment ⓘ
Medium
[Explore](#)

North Forest Pines- Staff Feedback

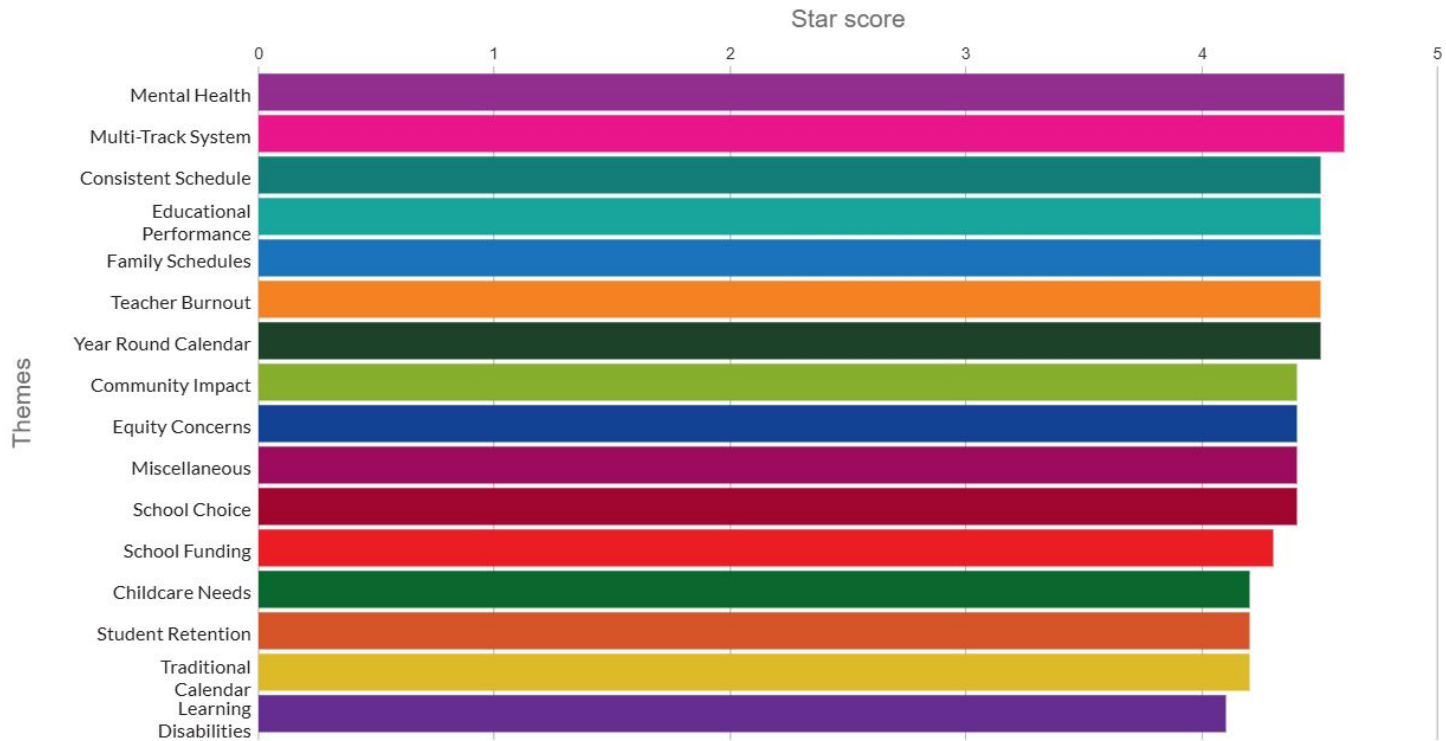
The responses express strong support for maintaining a year-round calendar at North Forest Pines, particularly a single Track 4 system, due to its beneficial impact on staff and student mental health through frequent breaks.

Staff are concerned about the financial strain, burnout, and logistical challenges posed by switching to a traditional calendar, particularly given proximity to Forest Pines Elementary.

There are also worries about losing competitive advantage against charter and private schools, which offer modified calendars.

Overall, staff advocate for maintaining the year-round schedule to protect well-being, academic retention, and school identity.

North Forest Pines- Staff Feedback



School Culture

Why does WCPSS want to change the culture of a school that is thriving?

Neutral

21

Staff

4.5

Ranked #1 of 81



Does Wake Co offer school choice in terms of calendar?

Having 2 K-5 schools on the same campus for the same calendar is not offering choices to families or staff that have been year-round for 18 years.

Neutral

21

Staff

4.4

Ranked #2 of 81



Single Track Year Round

Our teachers and families have long been told the next step would single track year round. To make the move to traditional is a surprise.

Neutral

21

Staff

4.4

Ranked #3 of 81



Why traditional and not single track year round?

Single track allows us to be different compared to forest pines, it aligns with feeder pattern schools and transfer options,

Neutral

21

Staff

4.4

Ranked #4 of 81



Pleasant Union- Parent/Guardian Feedback

Engagement

Review your current engagement statistics to understand how engaged participants are on this topic.

 Participants

189

Last activity: 0 days ago

 Thoughts

273

1.4 thoughts / participant

 Ratings

6,685

35.4 ratings / participant

 Ratings ratio 

24

Ratings / thought

 Alignment 

Low

[Explore](#)

Pleasant Union- Parent/Guardian Feedback

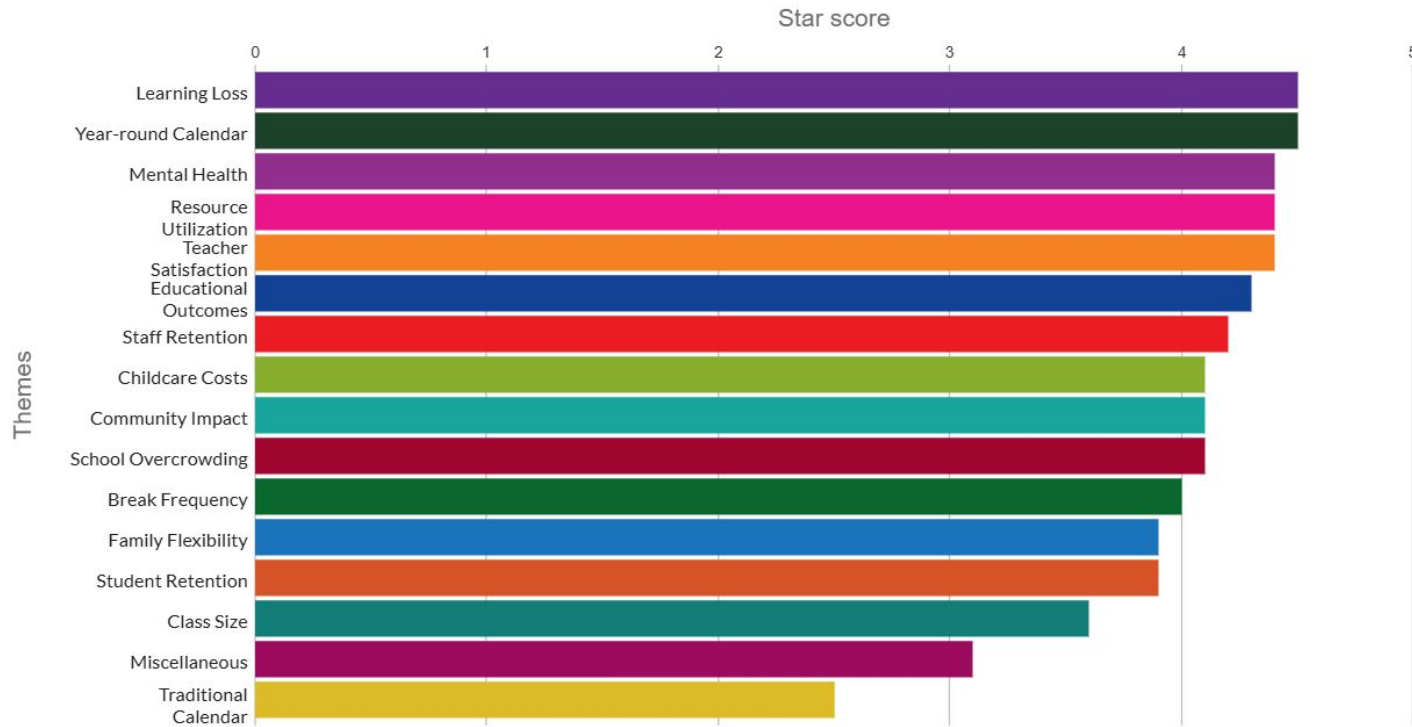
Responses highlight strong support for maintaining Pleasant Union Elementary's multi-track year-round schedule, emphasizing benefits in student and teacher well-being, consistent learning, and reduced burnout.

Year-round scheduling aligns with daycare and provides flexible childcare options, balancing family schedules and facilitating better engagement and academic outcomes for younger students.

Concerns include losing valued staff, increased classroom size, misaligned schedules with other schools, inconvenience for working parents, and potential negative community impact.

Advocates suggest a single Track 4 schedule as a compromise, preserving benefits without the drastic changes associated with traditional calendar conversion.

Pleasant Union- Parent/Guardian Feedback



ThoughtExchange Data-Parent/Guardian (PU)

Updated

We have really enjoyed the year round format and believe that it keeps our kids engaged and learning without long breaks.

Keep kids engaged and learning

Educational Outcomes Year-round Calendar

😊 Positive ★★★★★ 4.7
Ranked #1 of 273
37
Parent/ Guardia...
5 ★
4 ★
3 ★
2 ★
1 ★

Camps

Tracks allow for students to not compete with all of wake county over the summer. It's a big change to then have to deal with the high demands.

Miscellaneous

😐 Neutral ★★★★★ 4.7
Ranked #2 of 273
30
Parent/ Guardia...
5 ★
4 ★
3 ★
2 ★
1 ★

I requested a transfer to this school for my daughter because it is a year around sxhool.

We prefer year around because my child's father and siblings live in another state and year around allows her to visit with them more often

Family Flexibility Year-round Calendar

😐 Neutral ★★★★★ 4.6
Ranked #3 of 273
41
Parent/ Guardia...
5 ★
4 ★
3 ★
2 ★
1 ★

Year round learning

Improves information retention

Learning Loss Year-round Calendar

😐 Neutral ★★★★★ 4.6
Ranked #4 of 273
38
Parent/ Guardia...
5 ★
4 ★
3 ★
2 ★
1 ★

Pleasant Union- Staff Feedback

Engagement

Review your current engagement statistics to understand how engaged participants are on this topic.

 Participants

50

Last activity: 0 days ago

 Thoughts

56

1.1 thoughts / participant

 Ratings

861

17.2 ratings / participant

 Ratings ratio 

15

Ratings / thought

 Alignment 

Medium

[Explore](#)

Pleasant Union- Staff Feedback

Responses express strong support for maintaining the current multi-track year-round calendar at Pleasant Union Elementary, emphasizing its benefits for academic retention, mental wellness, work/life balance, and teacher retention.

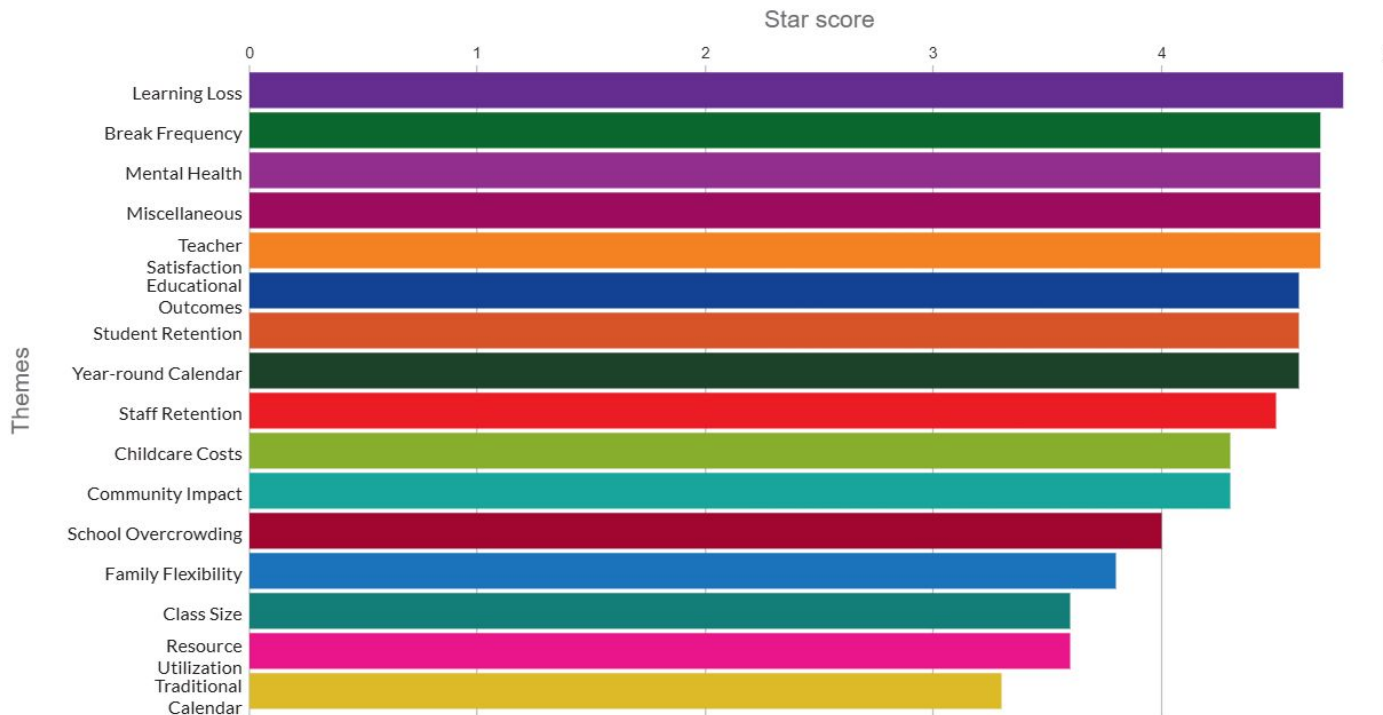
Frequent breaks minimize learning loss, reduce burnout, and help students stay engaged.

Concerns include potential salary reduction for 12-month staff and financial implications of decommissioning an old building.

A shift to a traditional calendar might lead to mold issues, overcrowding, and loss of community.

Some advocate for Track 4 as a compromise, balancing traditional alignment with the advantages of year-round scheduling.

Pleasant Union- Staff Feedback



ThoughtExchange Data-Staff (PU)

Updated

The year round schedule supports retention of academics and promotes the mental health and well-being of staff by allowing breaks year round.

Having these breaks reduces the amount of time teachers miss work and students are more regularly exposed to the curriculum content.



Neutral

24

Staff

★★★★☆ 4.6

Ranked #1 of 56



The year round schedule is great for preventing teacher burnout.

Teachers get quarterly breaks to gather resources, plan lessons, and have a mental health rest.



Neutral

23

Staff

★★★★☆ 4.6

Ranked #2 of 56



The year-round calendar is more effective with multiple breaks as opposed to one long break.

Teachers and students alike receive more frequent/shorter breaks which allows us time to rest throughout the year and avoid burnout.



Positive

25

Staff

★★★★☆ 4.5

Ranked #3 of 56



If we do have to change calendars, single track 4 is preferred.

We are all used to a year-round schedule, and most of our grade levels already have two track 4 classes. It follows the traditional calendar closely.



Neutral

18

Staff

★★★★☆ 4.5

Ranked #4 of 56



1

Presentation of the Annual Membership Forecast (1-year and 10-year projections)

2

Review of Projected Crowding for the Next School Year

3

Review of Capital Improvement Plan (CIP) Updates (7-year plan)

4

Preparation of the Annual Enrollment Plan

5

Review and Approval of Capped Schools due to Overcrowding Concerns

6

Review of Options to Address Other School Utilization Concerns

Review of Options to Address Other School Utilization Concerns

2027-28
School Year

1. Review capped schools list and other overcrowded areas to identify which schools are not addressed in the CIP or the enrollment plan
2. Identify schools that are not operating on a multi-track year-round calendar, but have long-term crowding concerns
3. Identify schools that are operating on a year-round calendar, but do not have long-term crowding concerns
4. Host engagement sessions for families and school staff to gain additional feedback and insight
5. Make recommendations to the Board based on data and feedback collected

Based on current (2025-26) WCPSS funding formulas and the projected student membership at each school

- Lead Secretary and Student Information Data Manager positions will have a decrease of 2 steps in their salary schedule. This will impact the pay rate for the employees in these positions.
- In addition, there are potential impacts to Child Nutrition Services and Special Education MOEs as well.

Allotment Category	MOE Change for Schools Moving from Multi-Track Year-Round to Traditional	MOE Change for Schools Moving from Multi-Track Year-Round to Traditional	Estimated Budget Change (Conversion rates used for calculation)
	North Forest Pines ES	Pleasant Union ES	
Assistant Principal	-1.00	-1.00	(\$18,820)
Receptionist	-2.00	-2.00	(\$23,052)
AIG	-1.00	-2.00	(\$23,526)
Counselor	-2.00	-2.00	(\$37,640)
Instructional Facilitator	-1.00	-1.00	(\$15,684)
Intervention (Based on Tier of School)	-0.50	-0.50	(\$7,842)
Limited English Proficiency	-3.00	-1.00	(\$31,368)
Literacy Coach - ES	-1.00	-1.00	(\$15,684)
Program Enhancement (ES)	1.00	0.00	\$7,842
School Library Media Coordinator	-2.00	-2.00	(\$31,368)
Total Change in MOE	-12.50	-12.50	(\$197,142)

- High growth areas of the district require the multi-track year-round calendar
- Additional months of employment, funded locally, are needed to operate schools on the multi-track year-round calendar
- Utilizing multi-track year-round schools allows for less reliance on new construction
- Rough order magnitude developing a new elementary school- \$95m
- Fewer new construction allows for renovation projects to be prioritized in the Capital Improvement Plan (CIP)

- April 8, 2025 Board Work Session presentation- [Multi-Track Year-Round School, Facility Utilization, and Student Achievement](#)
- The Impact of Year-Round Schooling on Academic Achievement: Evidence from Mandatory School Calendar Conversions ([McMullen & Rouse](#))
- Busting the Myths About Year-Round School Calendars ([von Hippel & Graves](#))

Recommendation for Calendar Conversion

STAFF RECOMMENDATION:

Convert **North Forest Pines Elementary** and **Pleasant Union Elementary** to **traditional** for the **2027-2028 school year**.

- Will provide K-12 calendar alignment (current base middle and high schools are on traditional calendar)
- Funding will be allocated to calendar conversions in high growth areas or recognized as a reduction in the operating budget

Calendar Conversions for 2027-2028

Next Steps:

- Meet with Area Superintendents and Principal of potentially impacted school **(completed)**
- Meet with potentially impacted school's staff to address any questions or concerns **(completed)**
- Engage the public through ThoughtExchange and virtual public engagement sessions **(completed)**
- Present public feedback and final recommendation to the Board at a future Board Meeting **(August 5, 2025)**



Questions?

Feedback, Thoughts & Ideas...

www.wcpss.net/calendarconversion