

A photograph of two young women in a classroom. They are looking at a whiteboard. The woman in the foreground has long brown hair and is wearing a white shirt. She is holding a yellow pencil and pointing at the whiteboard. The woman behind her is wearing glasses and a maroon shirt. The whiteboard has some papers and a large blue arrow pointing upwards. The background shows a classroom with desks and windows.

# Office of Student Assignment

# WCPSS 2026-2027 School Enrollment Plan

*Final Draft*

*A Multi-year Approach to Growth Management*

*Presented to the Board of Education  
Board Work Session | November 18, 2025*

## Goals for This Session

*By the end of today's discussion,  
Board members will have had  
an opportunity to...*

- *review the assignment planning process as it relates to developing the 2026-27 School Enrollment Plan*
- *review the feedback received from the public hearing and other recent public engagement activities*
- *review the final recommendations for the 2026-2027 School Enrollment Plan*
- *review the remaining components of the planning timeline*
- *share final thoughts or feedback for staff review and consideration in preparation for approval of the plan later this evening*

# Strategic Plan Alignment

## Family & Community Engagement

### **Aim 6: District Communications Structures**

Provide clear, accessible, and consistent information about family involvement opportunities.

### **Aim 12: Community Engagement**

Build strong relationships among staff, families, and community organizations in order to share resources and promote well-being.

#### **12.1 Increase support of non-English speaking families**

Ensure multilingual and non-English speaking families and all schools are aware of the support and services available from the district to help them engage fully with their school and our district.

#### **12.2 Build strong community partnerships**

Develop and share with district leaders a systemic approach to building partnerships with and seeking input and support from community organizations with a focus on partners in underserved communities.

# Strategic Plan Alignment

*(continued)*

## Operational Effectiveness

### **Aim 14: Differentiated Resource Allocation**

Differentiate resource allocation to provide PreK-12 students with equitable access to high-quality teachers and principals, and sufficient support services.

#### **14.3 Evaluate School Choice, Planning and Assignment Programs**

Evaluate student assignment policy, practices, and magnet programs to foster the balance and socio-economic integration of schools, in alignment with the magnet objectives of reducing high concentrations of poverty, promoting school integration and diversity, maximizing use of school facilities, and providing innovative and/ or expanded educational opportunities.

### **Aim 19: Transportation Upgrades**

Evaluate practices to ensure safe, timely, efficient, and reliable transportation services.

#### **19.2 Incorporate Bus Routing in Student Assignment Decisions**

Problem-solve bus route challenges with strategic student assignment changes.

# Information & Updates

[www.wcpss.net/2026enrollmentproposal](http://www.wcpss.net/2026enrollmentproposal)

[www.wcpss.net/assignmentplanning](http://www.wcpss.net/assignmentplanning)

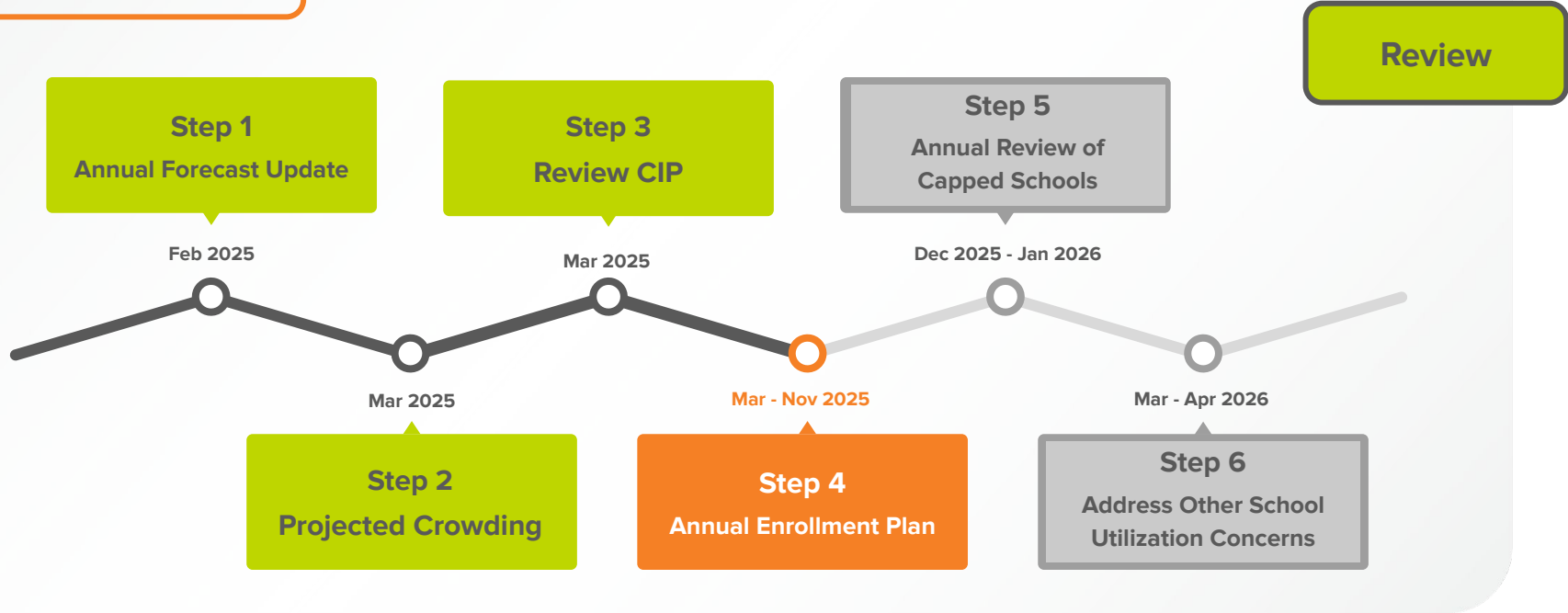
Review Materials Included  
with Agenda Item

## Review\*

*Assignment Planning Process & Board Policy 4150  
including Projected Enrollment Changes, School Crowding,  
Facilities Plans, & Public Feedback*

*\*Information included was previously presented and reviewed at a Board Work Session. Complete presentation materials are posted to the Board's Simbli site. Meeting dates in 2025 include: March 4, May 6, May 20, June 3 & June 24.*

# 2026-2027 School Enrollment Planning Process



# Presentation of the Annual Membership Forecast (1-year and 10-year projections)

Review

1

Presentation of the Annual Membership Forecast (1-year and 10-year projections)

2

Review of Projected Crowding for the Next School Year

3

Review of Capital Improvement Plan (CIP) Updates (7-year plan)

4

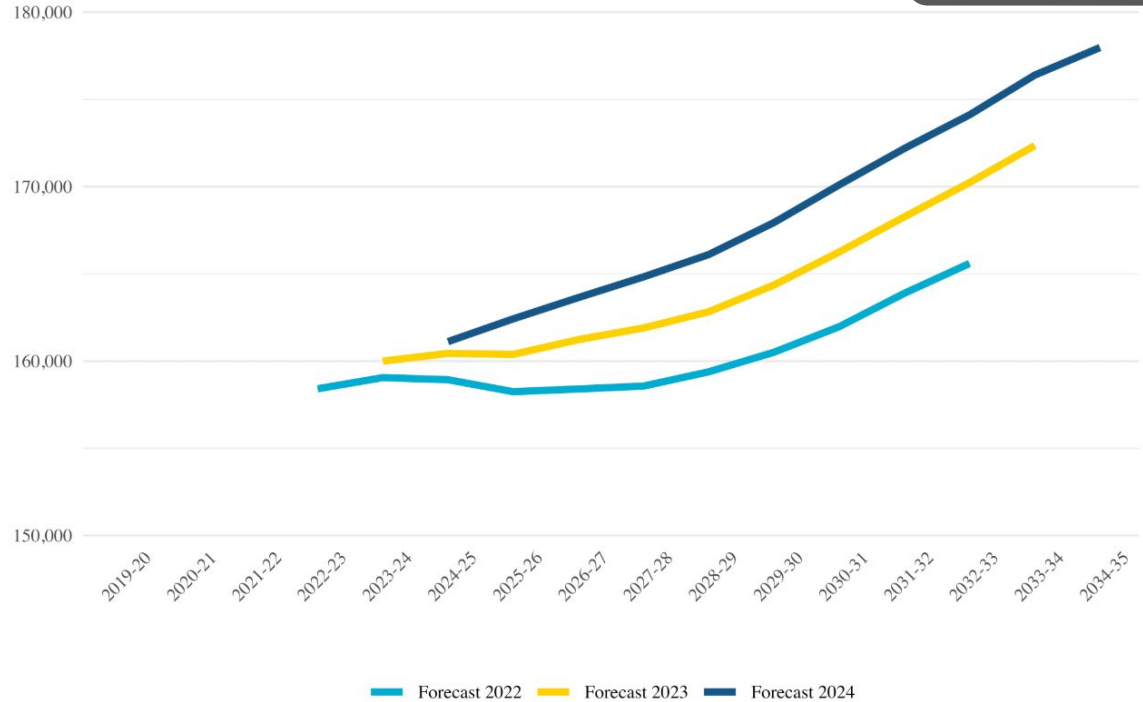
Preparation of the Annual Enrollment Plan

5

Review and Approval of Capped Schools due to Overcrowding Concerns

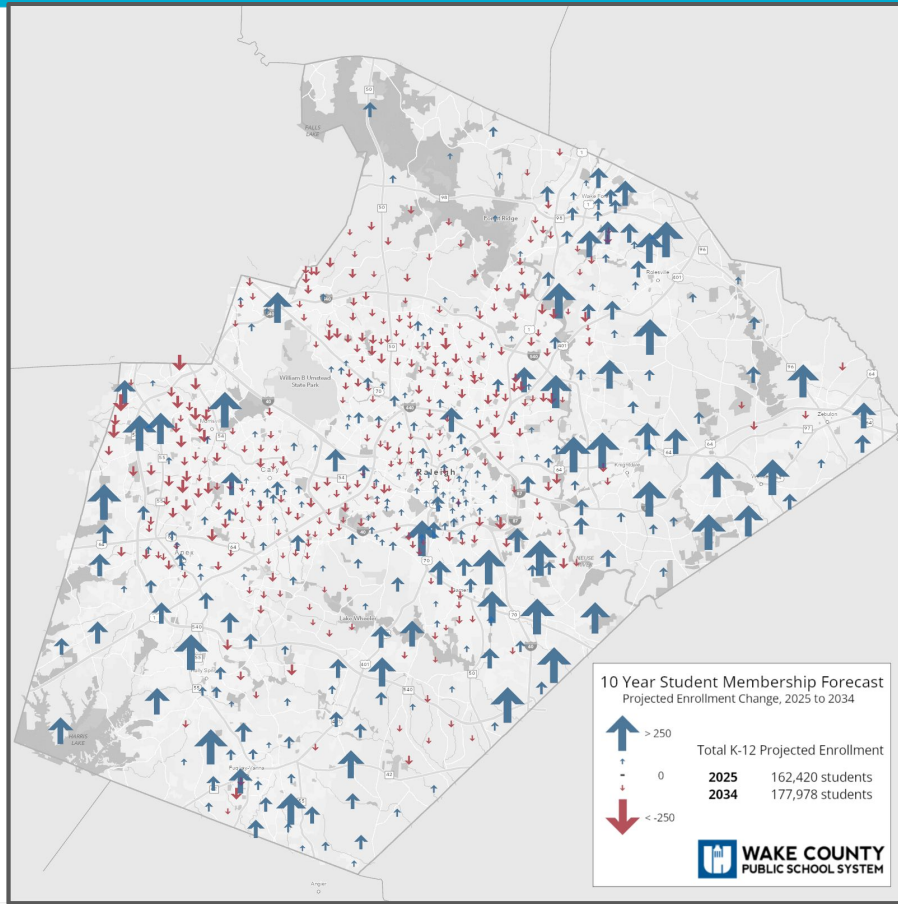
6

Review of Options to Address Other School Utilization Concerns



Source: Demographic Analytics Advisors and Carolina Demography

# Projected Enrollment Change: 2025 to 2034



Review

1

Presentation of the Annual Membership Forecast (1-year and 10-year projections)

2

Review of Projected Crowding for the Next School Year

3

Review of Capital Improvement Plan (CIP) Updates (7-year plan)

4

Preparation of the Annual Enrollment Plan

5

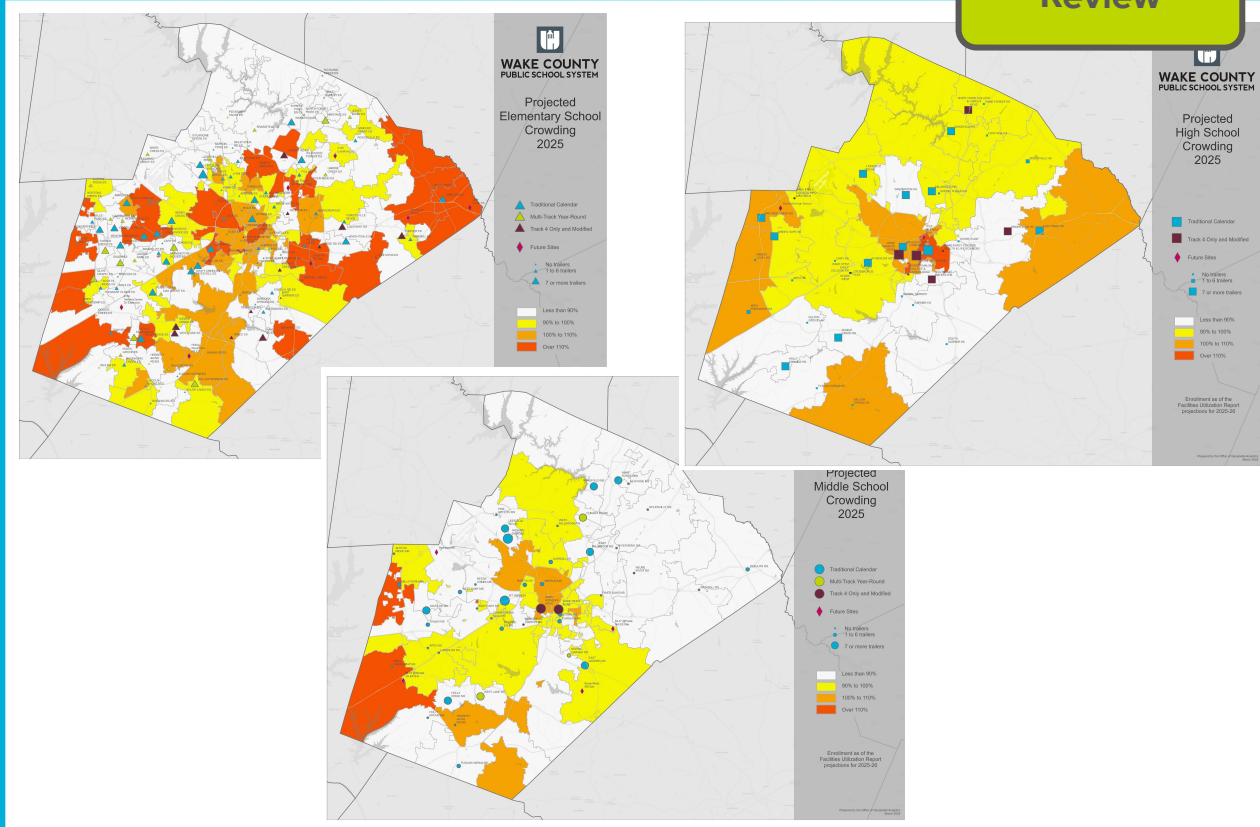
Review and Approval of Capped Schools due to Overcrowding Concerns

6

Review of Options to Address Other School Utilization Concerns

# Review of Projected Crowding for the Next School Year

Review



# Review of Capital Improvement Plan (CIP) Updates (7-year plan)

Review

1

Presentation of the Annual Membership Forecast (1-year and 10-year projections)

2

Review of Projected Crowding for the Next School Year

3

Review of Capital Improvement Plan (CIP) Updates (7-year plan)

4

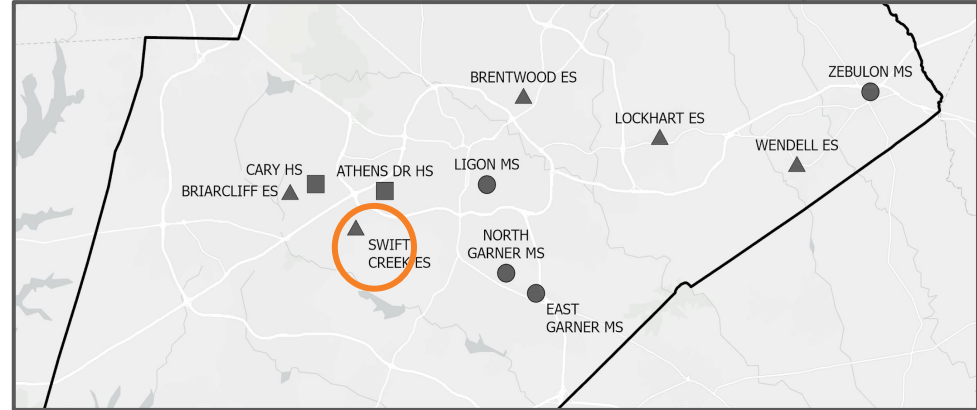
Preparation of the Annual Enrollment Plan

5

Review and Approval of Capped Schools due to Overcrowding Concerns

6

Review of Options to Address Other School Utilization Concerns



1

Presentation of the Annual Membership Forecast (1-year and 10-year projections)

2

Review of Projected Crowding for the Next School Year

3

Review of Capital Improvement Plan (CIP) Updates (7-year plan)

4

Preparation of the Annual Enrollment Plan

5

Review and Approval of Capped Schools due to Overcrowding Concerns

6

Review of Options to Address Other School Utilization Concerns

# Preparation of the Annual Enrollment Plan

Current Step



Public Engagement

Board Review of Annual Goals

Plan Development & Presentation

# Preparation of the Annual Enrollment Plan

1. **Public engagement** to capture thoughts and ideas to support the development of the next enrollment plan
2. **Review of goals** for the next enrollment plan with the Board
3. **Development and presentation** of the initial draft of the enrollment plan to the Board
  - a. Review of public feedback with the Board and presentation of recommended revisions to the initial draft
  - b. Presentation of the final draft of the enrollment plan to the Board for review and approval

# Participation Numbers

## Pre-Release Public Engagement Activities

Spring 2025 (as of 8.25.25)

Updated

### Digital Assets:

- 5,007 page views (+236)

### Live Sessions:

- 61 participants (In-person)
- 15 participants (Virtual)
  - 250 views\*

### Online Forums:

- 1,849 participants (+894)
- 1,475 thoughts (+738)

### AI-Supported Interviews:

- 111 participants

*(\*updated totals as of 11.12.25)*

## Pre-Release Public Engagement Activities...

<b>1</b>		<b>5,007</b>
Website Update (assignment planning)		Page Views (as of 8.2.25)
<b>7</b>		<b>95</b>
Information Sessions (in-person)		Information Session Participants
<b>4</b>		<b>135 / 250</b>
Information Session (virtual)		Participants / Recording Views
<b>4</b>		<b>245</b>
Rounds of Focus Groups		Focus Group Participants
<b>9</b>		<b>2334 / 1825</b>
ThoughtExchanges		ThoughtExchange Participants / Thoughts

# Planning Implications

**Stability:** review and prepare recommendations that allow for increased stability for families, including stability rules for transfers

**Calendar Continuity:** evaluate feasibility of aligning K-8 calendars

**Cohort Continuity:** evaluate feasibility of adjusting feeder patterns to improve cohort continuity

**Capacity Management:** review feasibility of various methods used to increase capacity, acknowledging unique/ regional concerns

**Policy Guidance:** acknowledge that **proximity** and **stability** are highlighted by families as being important, while balancing the need for the district to maintain **student achievement** and **operational efficiency** goals

# Preparation of the Annual Enrollment Plan

1. **Public engagement** to capture thoughts and ideas to support the development of the next enrollment plan
2. **Review of goals** for the next enrollment plan with the Board
3. **Development and presentation** of the initial draft of the enrollment plan to the Board
  - a. Review of public feedback with the Board and presentation of recommended revisions to the initial draft
  - b. Presentation of the final draft of the enrollment plan to the Board for review and approval

# Key Elements Under Consideration

## *New Elementary School*

- develop a base attendance area for a new elementary school
  - align middle and high school feeder patterns
  - address any domino impacts on nearby schools and assignment areas

## *Completed Renovation Projects*

- determine if additional capacity at renovated elementary schools can relieve crowding at nearby schools (*no recommendations for 2026-27*)

## Key Elements Under Consideration *(continued)*

### *Crowding and Transportation*

- address ongoing crowding at schools in high growth areas with no new capacity coming in the immediate area
- evaluate assignment areas with inefficient transportation routes

### *Stability: Carry Over Items from the 2025-26 Plan*

- address concerns about some feeder assignments that separate students from their peers as they move to the next school level

# Preparation of the Annual Enrollment Plan

1. **Public engagement** to capture thoughts and ideas to support the development of the next enrollment plan
2. **Review of goals** for the next enrollment plan with the Board
3. **Development and presentation** of the initial draft of the enrollment plan to the Board
  - a. Review of public feedback with the Board and presentation of recommended revisions to the initial draft
  - b. Presentation of the final draft of the enrollment plan to the Board for review and approval

Sep 2025 -  
Oct 2025

## Post-Release Public Engagement Activities...Initial Draft

**2**  
Websites (planning & proposal)



**6,416 & 16,307**  
Page Views (as of 10.14.25)

**3**  
Information Sessions



**269 / 527**  
Session Participants / Recording Views

**1**  
Open House



**~100**  
Open House Attendees

**1**  
ThoughtExchange



**835 / 758**  
ThoughtExchange Participants / Thoughts

# Thoughts on Initial Draft: Common Ground

## Side A: Opposition to Rezoning

Residents from communities such as Crestmont and Southerlyn express strong opposition to the proposed school rezoning. Many are concerned that it disrupts stability and sends children to lower-ranked schools or schools with differing calendars, impacting academic continuity and emotional well-being.

## Common Ground: Need for Stability & Fairness

Both sides of the debate recognize the importance of minimizing disruption for students and ensuring a fair process.

## Side B: Support for Equitable Distribution

Opponents argue that the rezoning proposal helps address issues related to overcrowding in popular schools and supports an equitable distribution of students. Some believe the adjustments are necessary to accommodate community growth and prevent the overuse of capped schools, potentially improving both academic and recreational opportunities.

# Feedback Received from Recent Public Engagement Activities

# Preparation of the Annual Enrollment Plan

1. **Public engagement** to capture thoughts and ideas to support the development of the next enrollment plan
2. **Review of goals** for the next enrollment plan with the Board
3. **Development and presentation** of the initial draft of the enrollment plan to the Board
  - a. Review of public feedback with the Board and presentation of recommended revisions to the initial draft
  - b. Presentation of the final draft of the enrollment plan to the Board for review and approval

Oct 2025 -  
Nov 2025

## Post-Release Public Engagement Activities...Revised Draft

2	Website Update (planning & proposal)	→	<b>7,112 &amp; 16,307</b> Page Views
1	Information Session	→	<b>240 / 43</b> Session Participants / Recording Views
1	ThoughtExchange Survey	→	<b>146 / 67</b> Survey Participants / Completed Surveys
1	Public Hearing	→	<b>7</b> Speakers

# Feedback on Revised Draft: Participation Breakdown

Which of the following best describes where you live within Wake County?

%	👤	Answer
2%	(3)	Northwestern Wake (Northwest Raleigh and Morrisville areas)
3%	(4)	Northern Wake (North Raleigh area)
1%	(1)	Northeastern Wake (Northeast Raleigh, Rolesville and Wake Forest areas)
2%	(3)	Eastern Wake (Knightdale, Wendell and Zebulon areas)
2%	(2)	Central Wake (Central Raleigh and Southeast Raleigh areas)
1%	(1)	Southeastern Wake (Garner area)
22%	(29)	Southern Wake (Fuquay-Varina area)
7%	(9)	Southwestern Wake (South Apex and Holly Springs areas)
61%	(80)	Western Wake (Apex and Cary areas)

Which of the following outreach methods during the planning process have you participated in or used? (mark all that apply)

**120** Responses

%	👤	Answer (Multiple select)
20%	(24)	New School Enrollment Planning Session (Spring 2023, Spring 2024 or Spring 2025)
8%	(9)	Focus Group (Summer of 2023, 2024 or 2025)
59%	(71)	ThoughtExchange feedback platform (September 2025)
33%	(39)	Virtual Information Session for the Initial Draft (September 9, 11, or 17)
10%	(12)	In-person Open House (September 24)
29%	(35)	Board Work Session - attended or watched recordings on YouTube (March, May, June, September or October)
12%	(14)	Other

Responded **146**
 Completed **67** 46% completed

Which of the following best describes your role?

**129** Responses

%	👤	Answer (Multiple select)
95%	(123)	Parent/Guardian
2%	(2)	Student
4%	(5)	Community Member
6%	(8)	Staff

How did you hear about this survey and/ or the enrollment plan proposal? (mark all that apply)

**126** Responses

%	👤	Answer (Multiple select)
66%	(83)	District community message (email)
10%	(13)	Principal message (email)
2%	(2)	District social media (facebook or instagram)
21%	(26)	District website
12%	(15)	Word of mouth
2%	(3)	Other









# Feedback on Revised Draft: Key Takeaways

**Proximity & Commute:** emphasis on the importance of having schools close to home to reduce commute time and increase safety

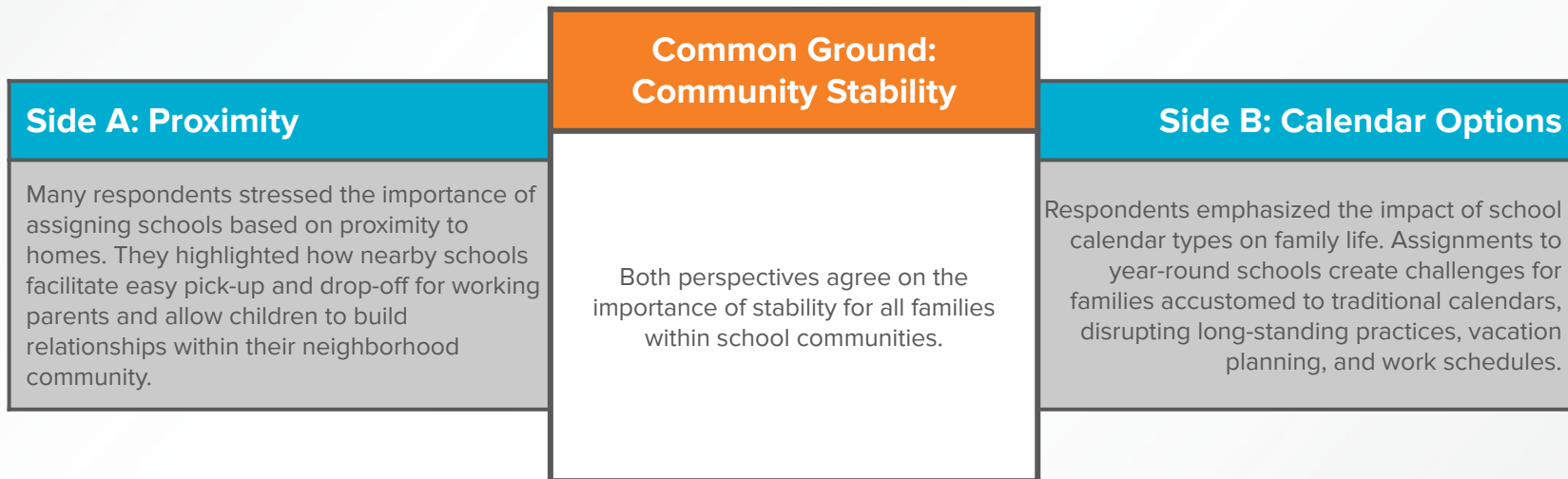
**School Stability:** feelings that changing schools disrupts established relationships and creates academic and emotional well-being challenges

**Community Impact:** assertions that community is a vital element in school dynamics

**Calendar & Scheduling:** dissatisfaction with changes that impose different or conflicting schedules, which can complicate child care arrangements and family dynamics

**Resource Allocation:** perception that effective resource allocation is imperative for developing an enriching educational environment and fostering equity across the school district

# Feedback on Revised Draft: Common Ground



# Review of Public Hearing

## 7 Speakers

- All speakers represented families currently assigned to White Oak Elementary & Mills Park Middle
- All speakers requested that the recommendation to assign their areas from these schools to Turner Creek Elementary and Salem Middle be removed from the enrollment plan

## Response / Rationale for Recommendation:

**Overcrowding Concerns:** White Oak Elementary and Mills Park Middle are significantly overcrowded and capped, with new families being assigned to an 'overflow' school because the buildings are operating above capacity. Additional enrollment is not feasible without compromising the learning environment.

**Benefits of Reassignment:** Turner Creek Elementary and Salem Middle have available seats to accommodate these students and allow for a stable assignment for the foreseeable future. The reassignment allows for better resource allocation, enhancing the educational experience for all students in this area.

**Transition Support:** WCPSS is committed to supporting families through the transition, with resources available to help students and families feel welcomed and connected in their new school community.

**Distance:** Turner Creek Elementary is approximately 0-1.5 miles farther from these neighborhoods than White Oak Elementary; Salem Middle is approximately 0-2.0 miles farther from these neighborhoods than Mills Park Middle.

**Support for Stability:** WCPSS is prepared to honor all stability transfer requests for existing students from this neighborhood, as these assignment changes are from existing schools to other existing schools. Allowing these students to stay at White Oak Elementary and Mills Park Middle is an effort to ease the transition.

# Information & Updates

[www.wcpss.net/2026enrollmentproposal](http://www.wcpss.net/2026enrollmentproposal)

[www.wcpss.net/assignmentplanning](http://www.wcpss.net/assignmentplanning)

# Final Recommendations for the 2026-2027 School Enrollment Plan

# Preparation of the Annual Enrollment Plan

1. **Public engagement** to capture thoughts and ideas to support the development of the next enrollment plan
2. **Review of goals** for the next enrollment plan with the Board
3. **Development and presentation** of the initial draft of the enrollment plan to the Board
  - a. Review of public feedback with the Board and presentation of recommended revisions to the initial draft
  - b. Presentation of the final draft of the enrollment plan to the Board for review and approval

# Overview

## Base School Impacts: *Elementary School*

### Sending Schools:

Ballentine

Banks Road

Middle Creek

Salem

Vance

West Lake

White Oak

Zebulon Magnet

### Receiving Schools:

Banks Road

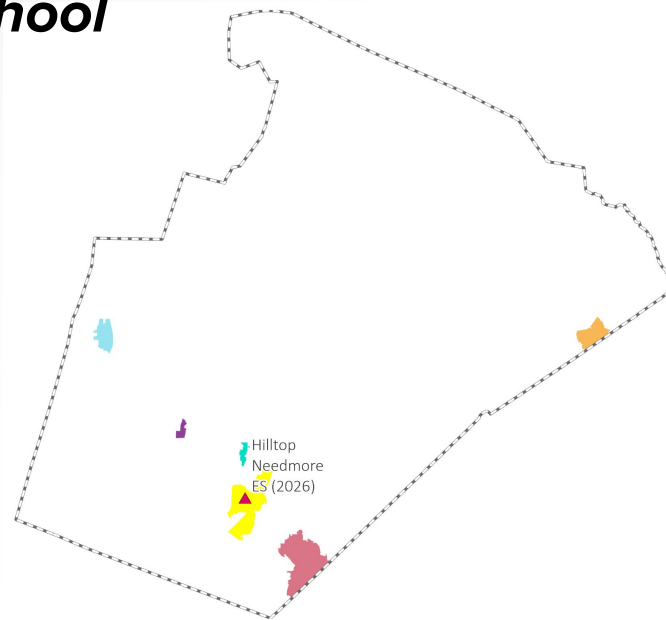
Carver

**NEW** Hilltop Needmore

Oak Grove

Turner Creek

West Lake



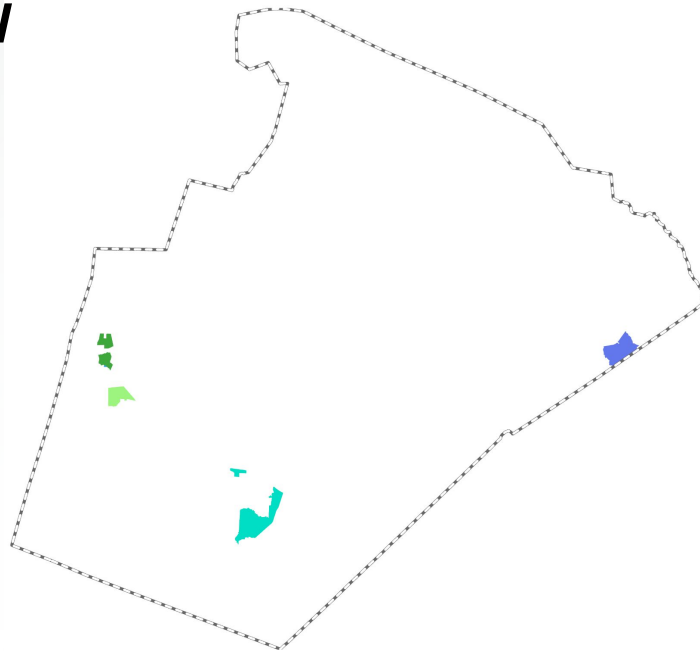
## Base School Impacts: *Middle School*

### Sending Schools:

Dillard Drive Magnet  
Herbert Akins Road  
Lufkin Road  
Mills Park  
Salem  
Zebulon Magnet

### Receiving Schools:

Apex  
Salem  
Wendell Magnet  
West Lake



## Base School Impacts: *High School*

### Sending Schools:

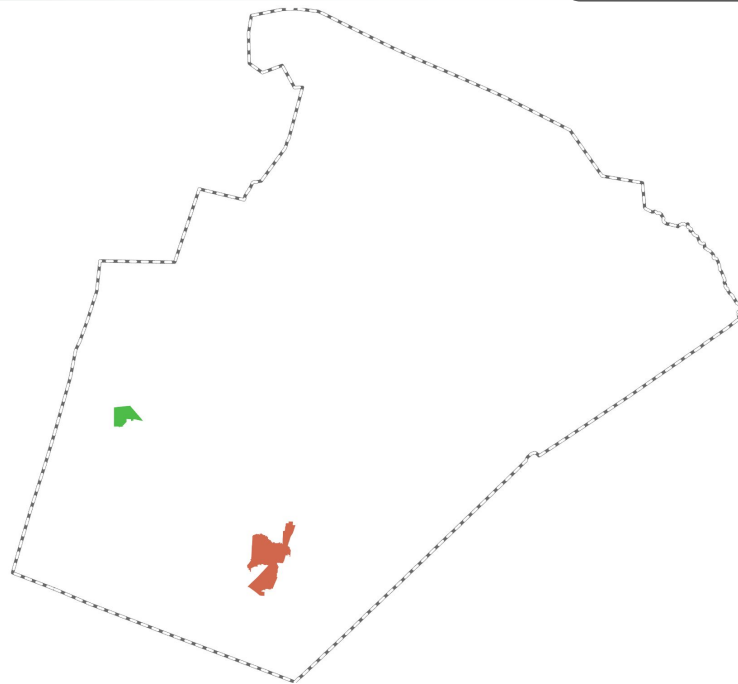
Apex Friendship

Willow Spring

### Receiving Schools:

Apex

Middle Creek



# **Recommended Stability Rules for 2026-27**

# Opening a New Elementary School (2026-2027)

For students proposed to be assigned from an existing elementary school to the **NEW Hilltop Needmore ES**:

- Current students **rising into 4th or 5th grade** are eligible to remain at their current school with transfer status (no transportation) through the end of 5th grade
  - Rising kindergarten, 1st, 2nd or 3rd grade **siblings** of these students are eligible to join their older sibling with transfer status (no transportation) through the end of 5th grade

**NOTE: These requests must be submitted during the designated Stability Transfer Window**

## Other Elementary Assignment Changes (2026-2027)

For students proposed to be assigned from an **existing elementary school to an existing elementary school**

- Current students **rising into 1st through 5th grade** are eligible to remain assigned to their current school with transfer status (no transportation) through the end of 5th grade
  - Rising **kindergarten siblings** of these students are eligible to join their older siblings with transfer status (no transportation) through the end of 5th grade

**NOTE: These requests must be submitted during the designated Stability Transfer Window**

## Other Middle School Assignment Changes (2026-2027)

For students proposed to be assigned from an **existing middle school to an existing school**

- Current students **rising into 7th or 8th grade** are eligible to remain assigned to their current school with transfer status (no transportation) through the end of 8th grade
  - Rising **6th grade siblings** of these students are eligible to join their older siblings with transfer status (no transportation) through the end of 8th grade

**NOTE: These requests must be submitted during the designated Stability Transfer Window**

## Other High School Assignment Changes (2026-2027)

For students proposed to be assigned from an **existing high school to an existing high school**

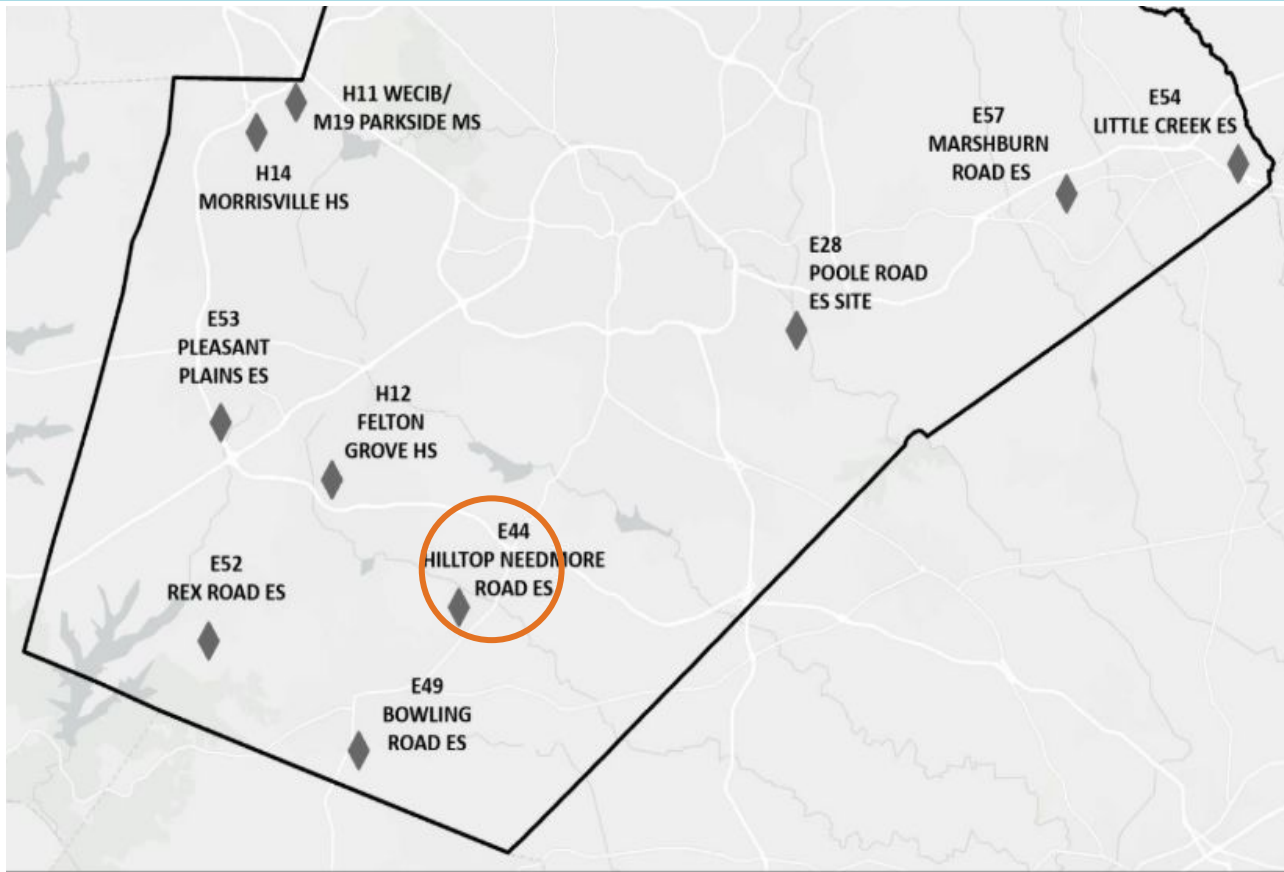
- Current students **rising into 10th through 12th grade** are eligible to remain assigned to their current school with transfer status (no transportation) through the end of 12th grade
  - Rising **9th grade siblings** of these students are eligible to join their older siblings with transfer status (no transportation) through the end of 12th grade

**NOTE: These requests must be submitted during the designated Stability Transfer Window**

# Recommendations Related to New School Opening

Review

# Hilltop Needmore Elementary



# New School - Hilltop Needmore ES (opening July 2026)

## Calendar Recommendation

- Multi-track Year-round, Operating Track 4 Only, Capacity = 716 (max. 924)

## Impacted Schools

- Ballentine ES, Banks Road ES & West Lake ES

2025-26 Base School	Calendar	Capacity w/ Trailers	2026-27 Projected Utilization w/ Trailers	2027-28 Projected Utilization w/ Trailers
Ballentine ES	Multi-track Year-round	696	102%	103%
Banks Road ES	Track 4 Only	616	126%	132%
West Lake ES	Track 4 Only	748	76%	78%

# New School - Hilltop Needmore ES (opening July 2026)

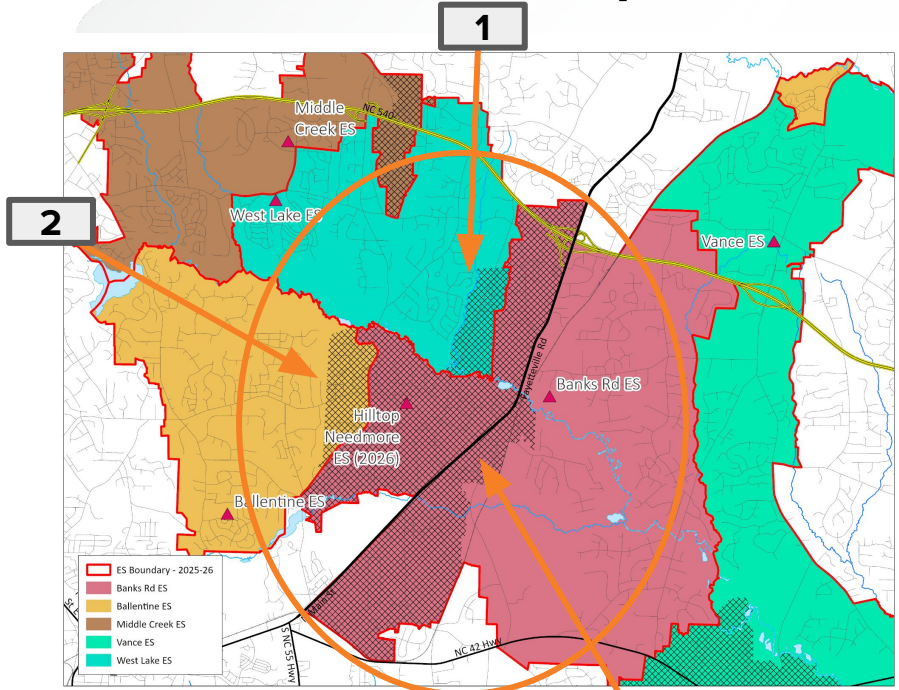
## Other Impacted Schools

- Middle Creek ES, Oak Grove ES, & Vance ES

2025-26 Base School	Calendar	Capacity w/ Trailers	2026-27 Projected Utilization w/ Trailers	2027-28 Projected Utilization w/ Trailers
Middle Creek ES	Track 4 Only	670	114%	122%
Oak Grove ES	Multi-track Year-round	716	79%	79%
Vance ES	Track 4 Only	408	110%	113%

# New School - Hilltop Needmore ES

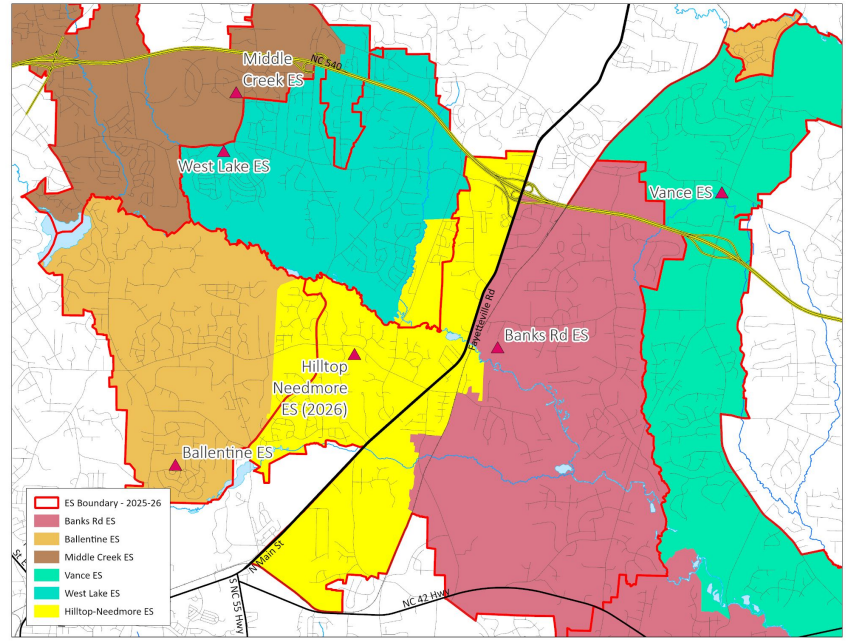
Review



Impacted Areas:



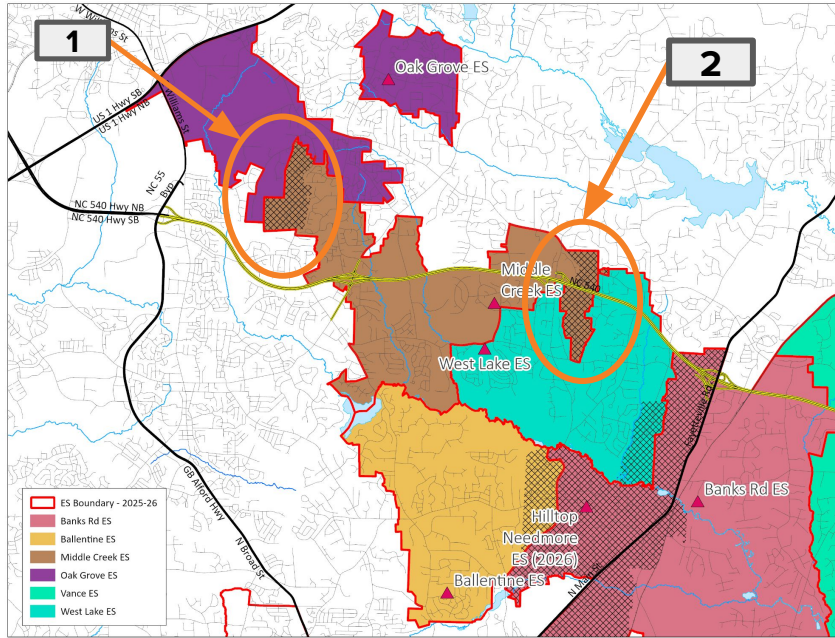
3



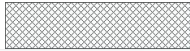
Proposed Base Areas

# Existing Schools - Oak Grove ES & West Lake ES (from Middle C

Review



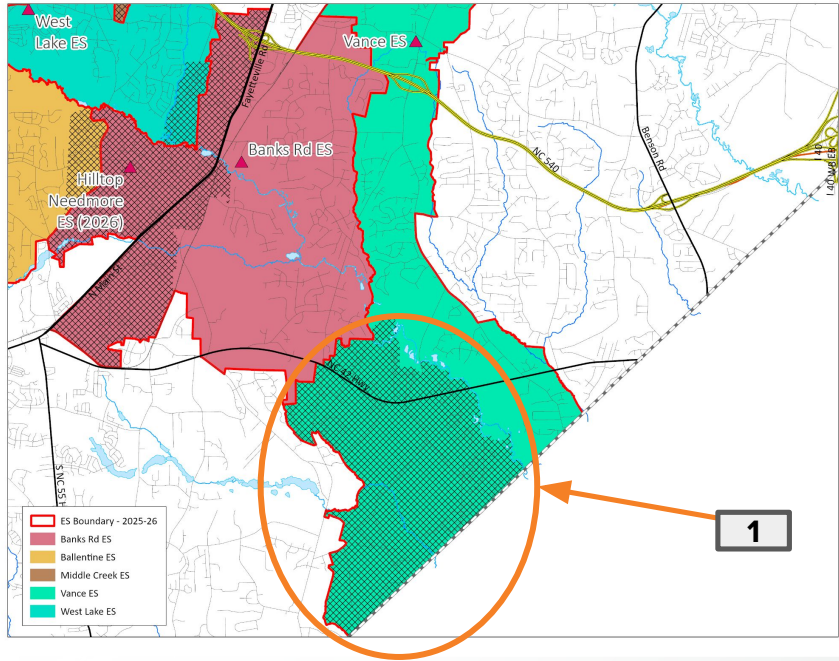
Impacted Areas:



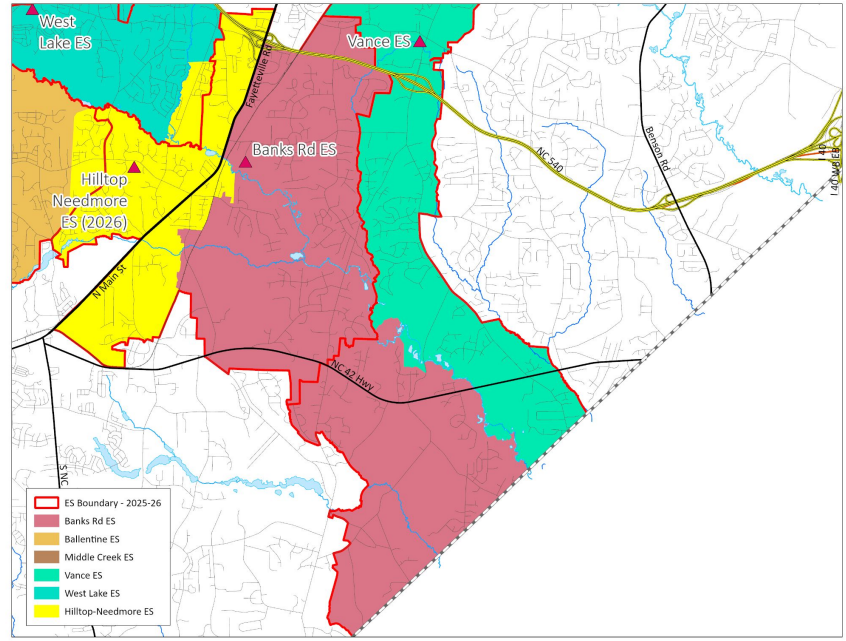
Proposed Base Areas

# Existing Schools - Banks Road ES (from Vance ES)

Review



Impacted Areas: 



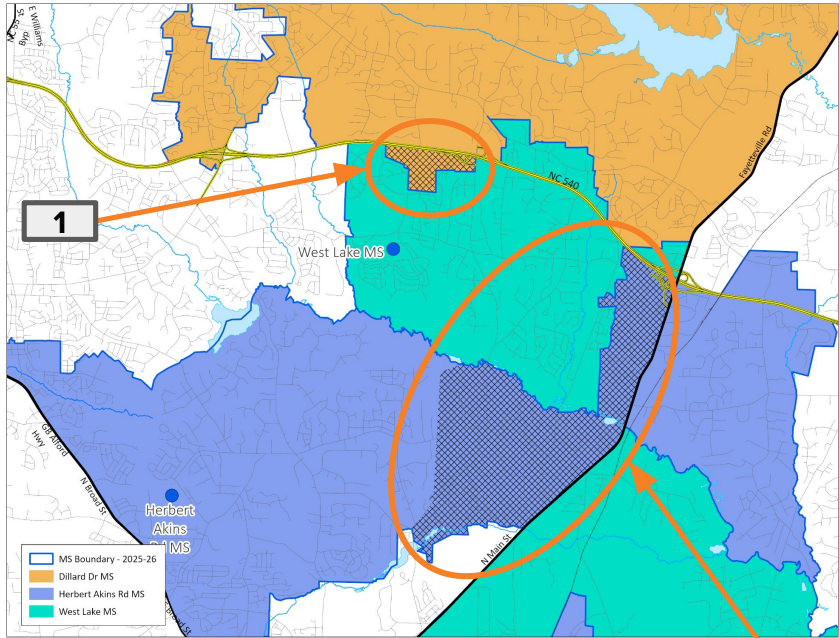
Proposed Base Areas

# New School - Hilltop Needmore ES & Existing Schools

2026-27 Base School	Calendar	Capacity w/ Trailers	2026-27 Projected Utilization w/ Trailers	2027-28 Projected Utilization w/ Trailers
Ballentine ES	Multi-track Year-round	696	95%	95%
Banks Road ES	Track 4 Only	616	87%***	92%***
Middle Creek ES	Track 4 Only	670	93%	101%
Oak Grove ES	Multi-track Year-round	716	93%	93%
Vance ES	Track 4 Only	408	75%	76%
West Lake ES	Track 4 Only	748	77%***	79%***
<b>Hilltop Needmore ES</b>	<b>Track 4 Only</b>	<b>716 (max. 924)</b>	<b>69%</b>	<b>71%</b>

# Existing Schools - West Lake MS (from Dillard Drive MS & Herbert Akins Road MS)

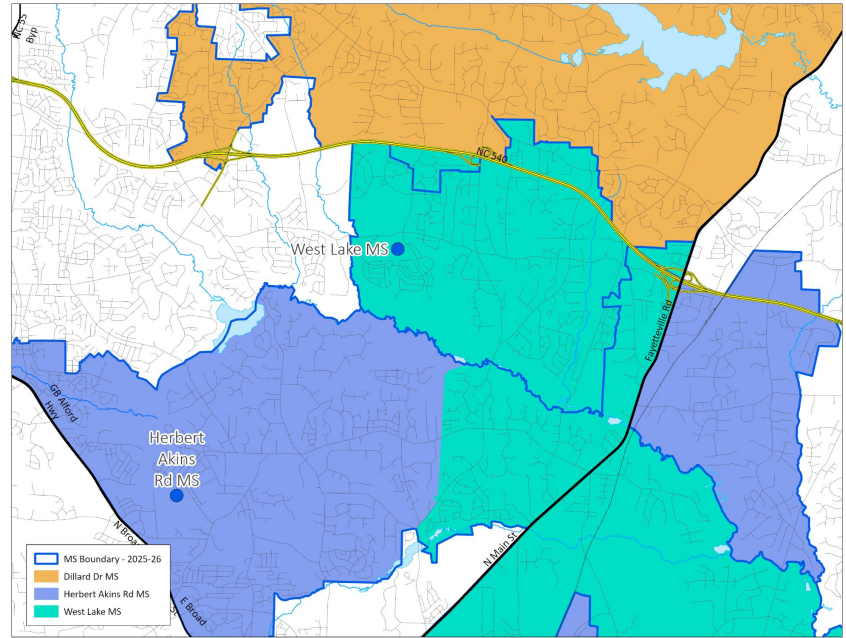
Review



Impacted Areas:



2



Proposed Base Areas

## Existing Schools - West Lake MS (from Dillard Drive Magnet MS & Herbert Akins Road MS)

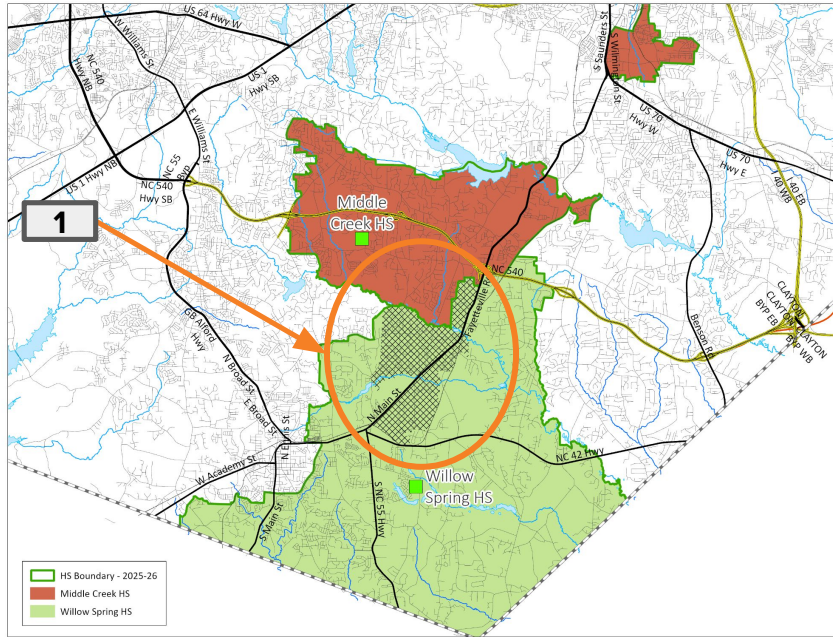
2025-26 Base School	Calendar	Capacity w/ Trailers	2026-27 Projected Utilization w/ Trailers	2027-28 Projected Utilization w/ Trailers
Dillard Drive Magnet MS	Traditional	1092	96%	99%
Herbert Akins Road MS	Multi-track Year-round	1248	105%	112%
West Lake MS	Track 4 Only	1196	61%	63%

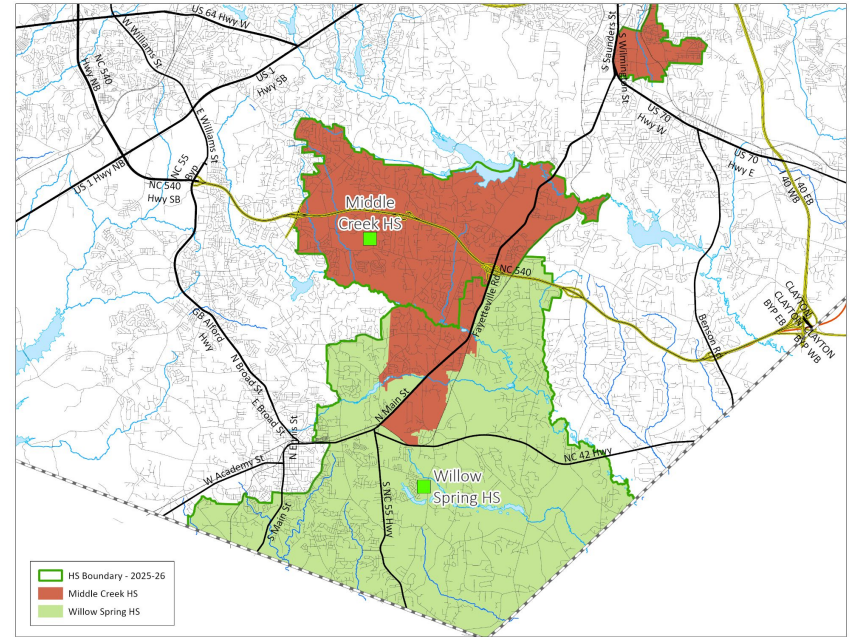
2026-27 Base School	Calendar	Capacity w/ Trailers	2026-27 Projected Utilization w/ Trailers	2027-28 Projected Utilization w/ Trailers
Dillard Drive Magnet MS	Traditional	1092	95%	98%
Herbert Akins MS	Multi-track Year-round	1248	93%	99%
West Lake MS	Track 4 Only	1196	74%	76%

# Existing Schools - Middle Creek HS (from Willow Spring I

Review



Impacted Areas:



Proposed Base Areas

## Existing Schools - Middle Creek HS (from Willow Spring HS)

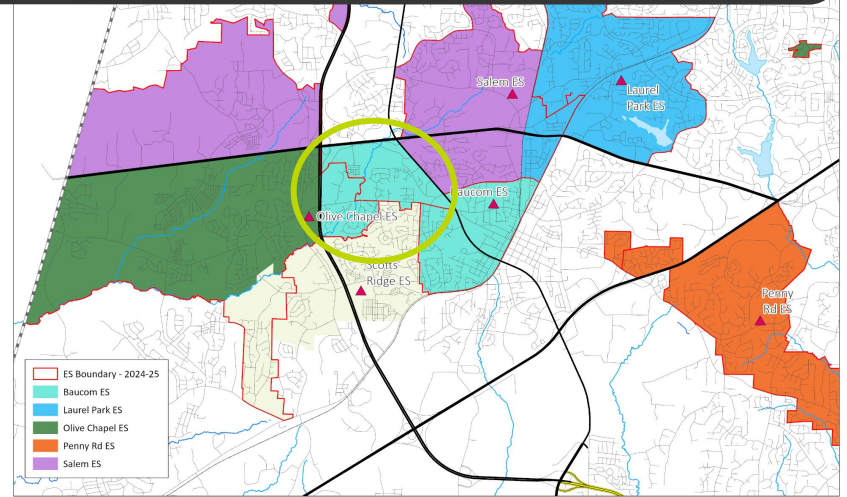
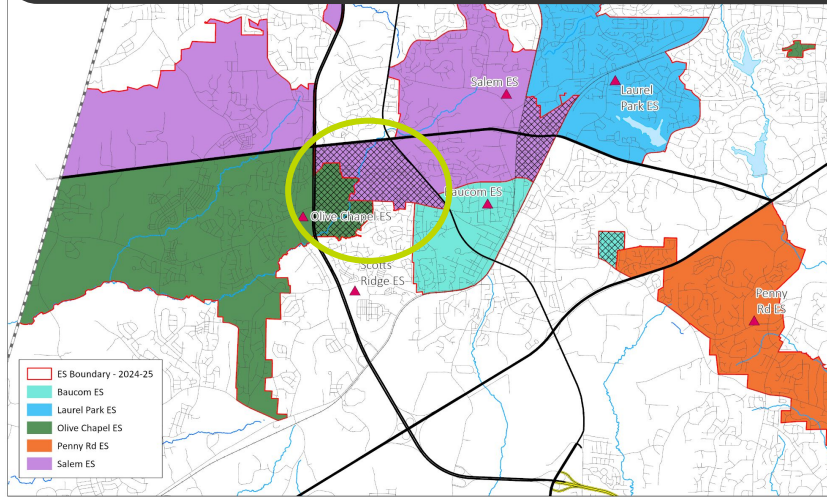
2025-26 Base School	Calendar	Capacity w/ Trailers	2026-27 Projected Utilization w/ Trailers	2027-28 Projected Utilization w/ Trailers
Middle Creek HS	Traditional	2232	67%	67%
Willow Spring HS	Traditional	2240	113%	116%

2026-27 Base School	Calendar	Capacity w/ Trailers	2026-27 Projected Utilization w/ Trailers	2027-28 Projected Utilization w/ Trailers
Middle Creek HS	Traditional	2232	79%	79%
Willow Spring HS	Traditional	2240	101%	104%

# Recommendations for Feeder Pattern Alignment

# Renovated School - Baucom ES (from Olive Chapel ES & Salem ES)

Previously Approved for 2025-2026



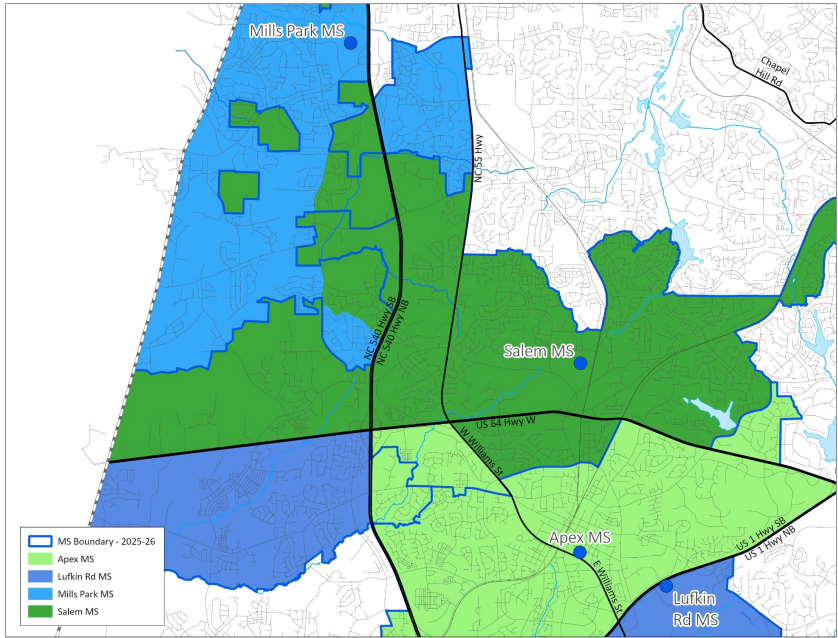
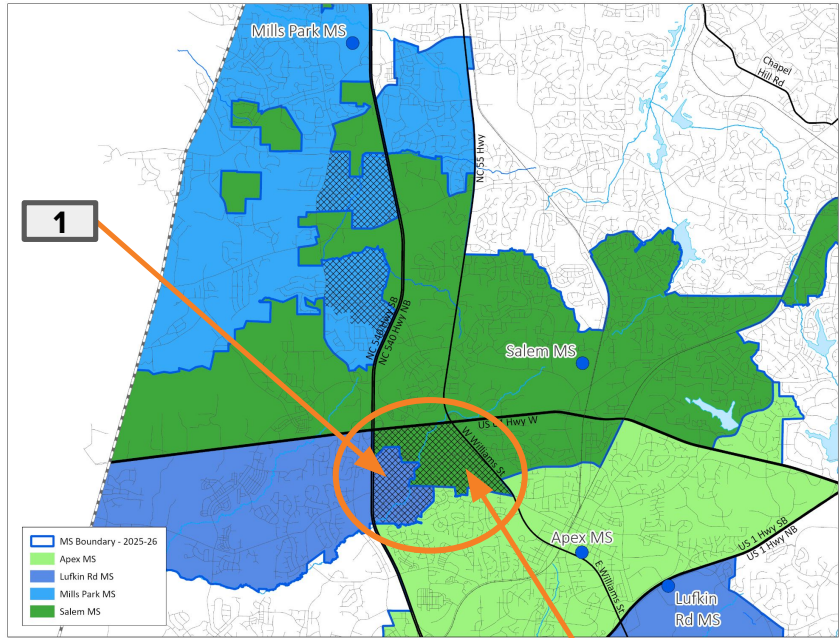
Impacted Areas:



Proposed Base Areas

# Existing Schools - Apex MS (from Lufkin Road MS & Salem MS)

Review



Impacted Areas:



Proposed Base Areas

# Existing Schools - Apex MS (from Lufkin Road & Salem MS)

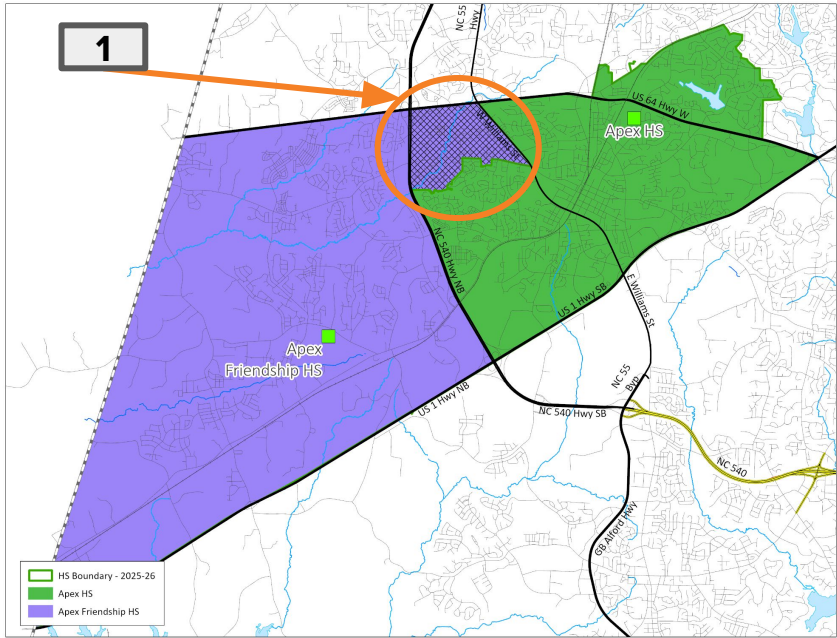
2025-26 Base School	Calendar	Capacity w/ Trailers	2026-27 Projected Utilization w/ Trailers	2027-28 Projected Utilization w/ Trailers
Apex MS	Traditional	936	94%	97%
Lufkin Road MS	Multi-track Year-round	1248	101%	110%
Salem MS	Multi-track Year-round	1300	85%	87%

2026-27 Base School	Calendar	Capacity w/ Trailers	2026-27 Projected Utilization w/ Trailers	2027-28 Projected Utilization w/ Trailers
Apex MS	Traditional	936	103%	105%
Lufkin Road MS	Multi-track Year-round	1248	100%	108%
Salem MS	Multi-track Year-round	1300	86%***	89%***

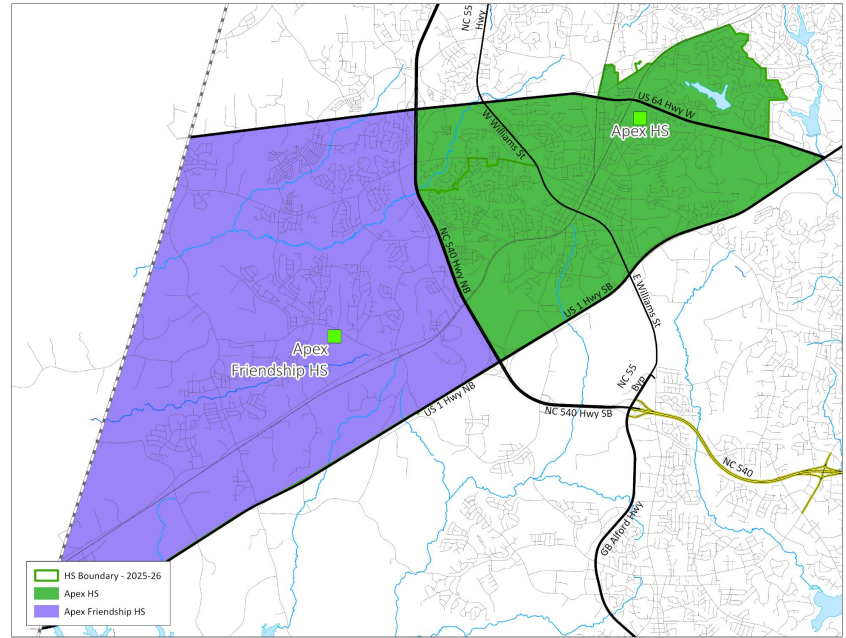
\*\*\*This school's projected crowding reflects the cumulative impact of multiple assignment adjustments.

# Existing Schools - Apex HS (from Apex Friendship HS)

Review



Impacted Areas:



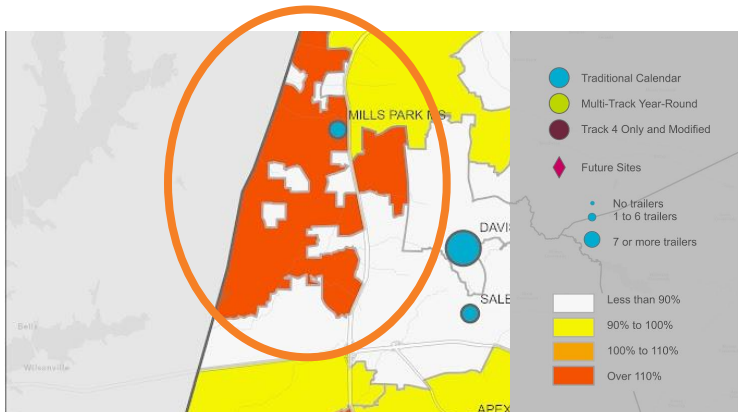
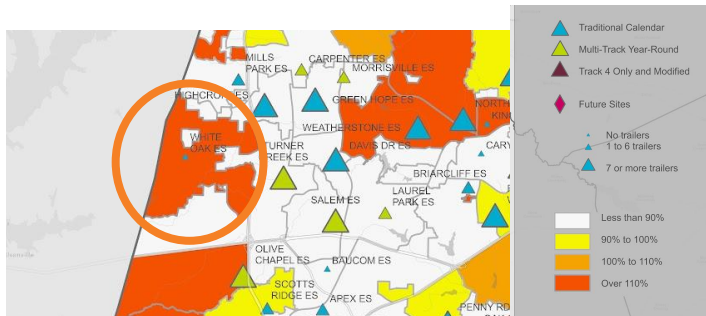
Proposed Base Areas

# Existing Schools - Apex HS (from Apex Friendship HS)

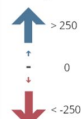
2025-26 Base School	Calendar	Capacity w/ Trailers	2026-27 Projected Utilization w/ Trailers	2027-28 Projected Utilization w/ Trailers
Apex HS	Traditional	2240	97%	95%
Apex Friendship HS	Traditional	2384	115%	117%

2026-27 Base School	Calendar	Capacity w/ Trailers	2026-27 Projected Utilization w/ Trailers	2027-28 Projected Utilization w/ Trailers
Apex HS	Traditional	2240	104%	102%
Apex Friendship HS	Traditional	2384	108%	110%

# Recommendations to Address Crowding and Continued Growth



10 Year Student Membership Forecast  
Projected Enrollment Change, 2025 to 2034

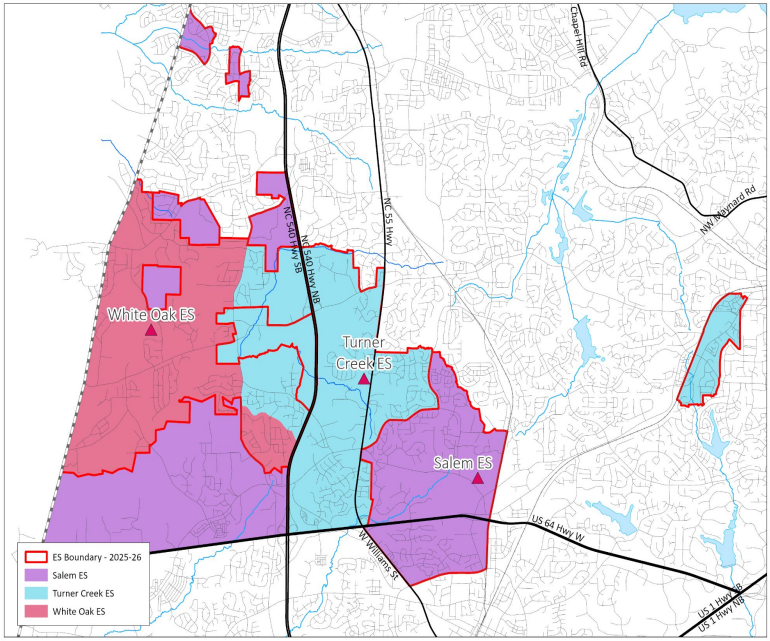
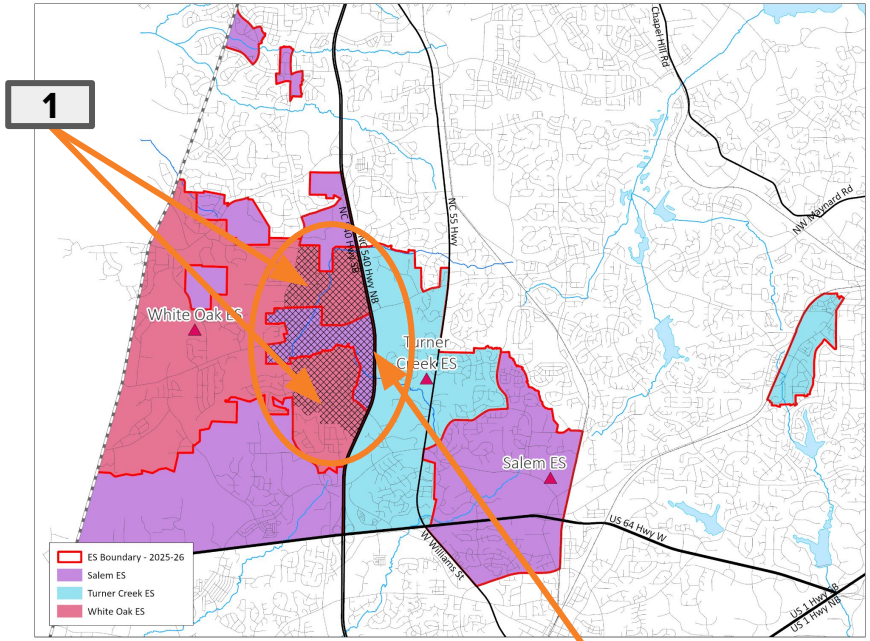


Total K-12 Projected Enrollment	
2025	162,420 students
2034	177,978 students

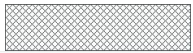


# Existing Schools - Turner Creek ES (from White Oak ES)

Review



Impacted Areas:



2

Proposed Base Areas

# Existing Schools - Turner Creek ES (from White Oak ES)

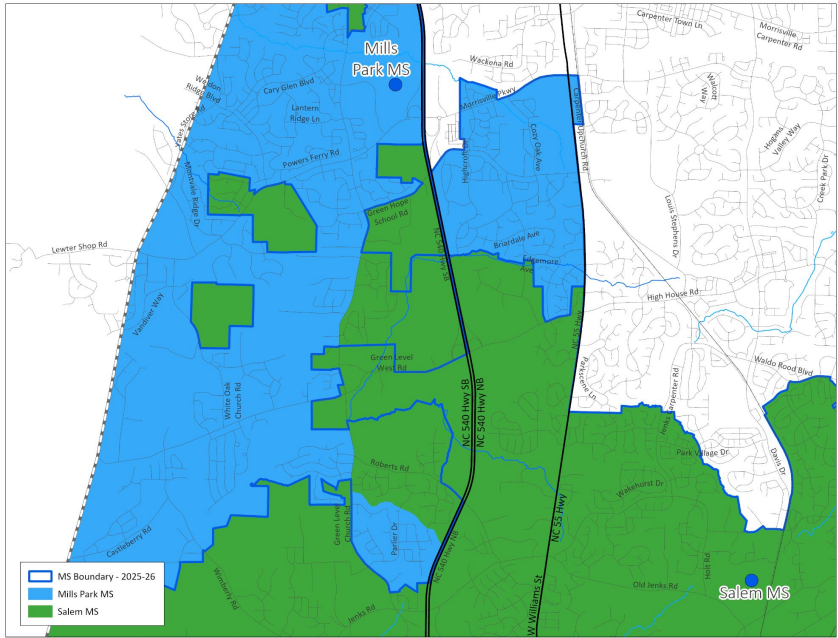
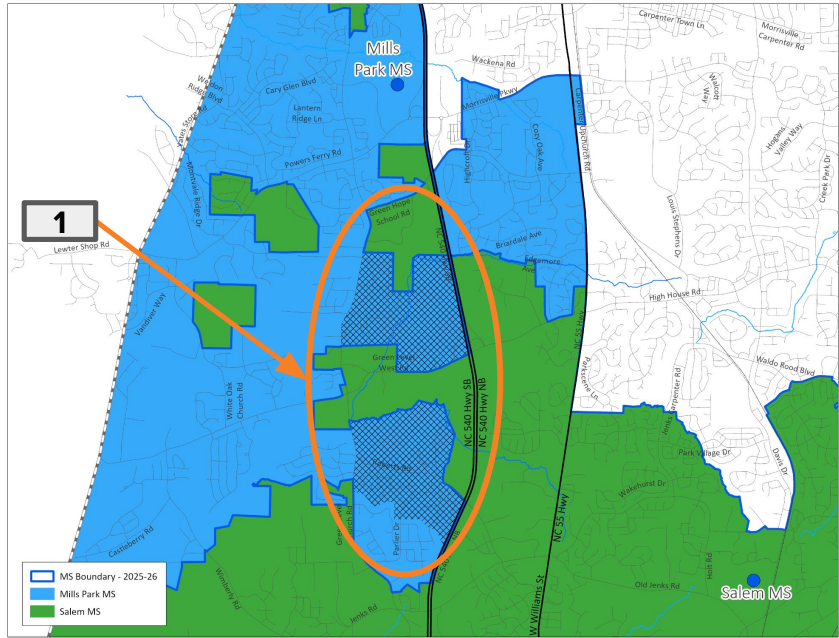
2025-26 Base School	Calendar	Capacity w/ Trailers	2026-27 Projected Utilization w/ Trailers	2027-28 Projected Utilization w/ Trailers
Salem ES	Multi-track Year-round	856	87%	90%
Turner Creek ES	Multi-track Year-round	756	69%	72%
White Oak ES	Traditional	616	133%	134%

2026-27 Base School	Calendar	Capacity w/ Trailers	2026-27 Projected Utilization w/ Trailers	2027-28 Projected Utilization w/ Trailers
Salem ES	Multi-track Year-round	856	86%	89%
Turner Creek ES	Multi-track Year-round	756	99%	102%
White Oak ES	Traditional	616	98%	99%

# Existing Schools - Salem MS (from Mills Park MS)

Review



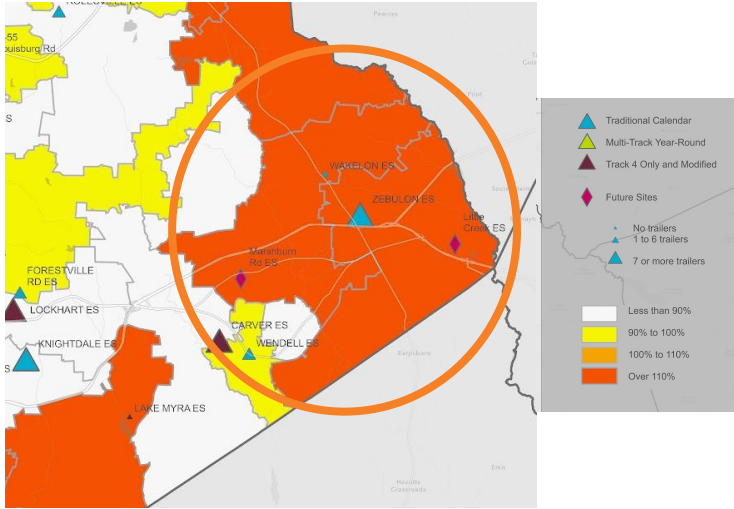
Impacted Areas: 

Proposed Base Areas

# Existing Schools - Salem MS (from Mills Park MS)

2025-26 Base School	Calendar	Capacity w/ Trailers	2026-27 Projected Utilization w/ Trailers	2027-28 Projected Utilization w/ Trailers
Mills Park MS	Traditional	1352	116%	113%
Salem MS	Multi-track Year-round	1300	85%	87%

2026-27 Base School	Calendar	Capacity w/ Trailers	2026-27 Projected Utilization w/ Trailers	2027-28 Projected Utilization w/ Trailers
Mills Park MS	Traditional	1352	110%	107%
Salem MS	Multi-track Year-round	1300	86%***	89%***



10 Year Student Membership Forecast  
Projected Enrollment Change, 2025 to 2034

↑	> 250	Total K-12 Projected Enrollment	
+	0		
-	0		
↓	< -250		
		2025	162,420 students
		2034	177,978 students





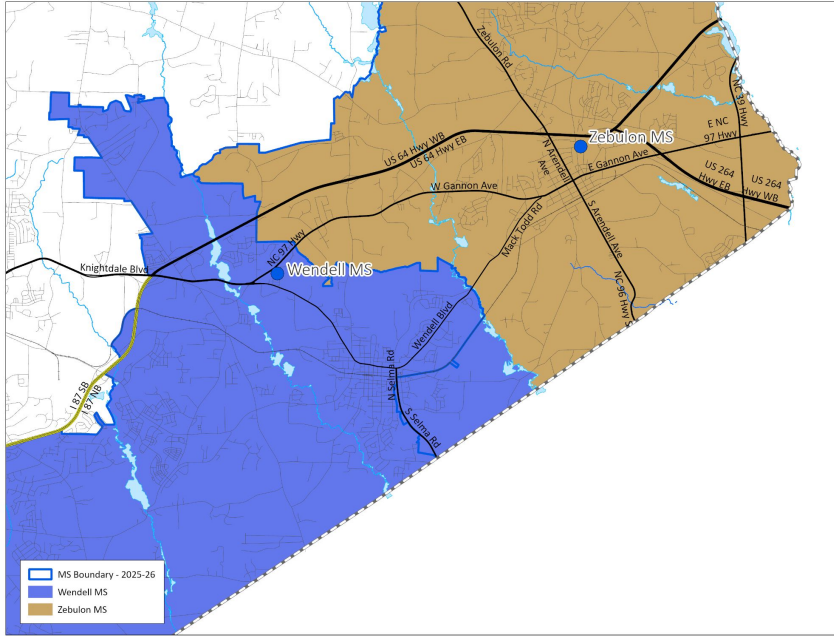
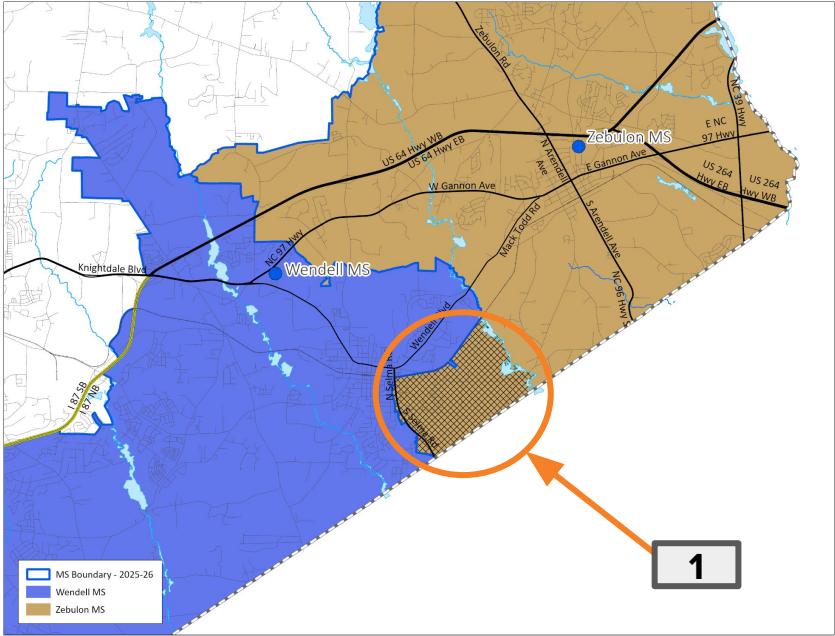
# Existing Schools - Carver ES (from Zebulon Magnet ES)

2025-26 Base School	Calendar	Capacity w/ Trailers	2026-27 Projected Utilization w/ Trailers	2027-28 Projected Utilization w/ Trailers
Carver ES	Modified	668	114%	127%
Zebulon Magnet ES	Traditional	570	124%	143%

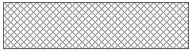
2026-27 Base School	Calendar	Capacity w/ Trailers	2026-27 Projected Utilization w/ Trailers	2027-28 Projected Utilization w/ Trailers
Carver ES	Modified	668	121%	135%
Zebulon Magnet ES	Traditional	570	115%	121%

# Existing Schools - Wendell Magnet MS (from Zebulon Magnet MS)

Review



Impacted Areas:



Proposed Base Areas

# Existing Schools - Wendell Magnet MS (from Zebulon Magnet MS)

2025-26 Base School	Calendar	Capacity w/ Trailers	2026-27 Projected Utilization w/ Trailers	2027-28 Projected Utilization w/ Trailers
Wendell Magnet MS	Traditional	936	87%	91%
Zebulon Magnet MS	Traditional	1040	80%	84%

2026-27 Base School	Calendar	Capacity w/ Trailers	2026-27 Projected Utilization w/ Trailers	2027-28 Projected Utilization w/ Trailers
Wendell Magnet MS	Traditional	936	89%	94%
Zebulon Magnet MS	Traditional	1040	78%	82%

# Recommended Calendar Application Area Changes

# Elementary Calendar Application Changes

*Recommendations based on proposed base assignment changes*

Current Base	Current Calendar Application School(s)	Proposed Base	Proposed Calendar Application School
Banks (MTYR)	Fuquay-Varina (T)	Hilltop Needmore (MTYR)	n/a
Middle Creek (MTYR)	Swift Creek (T)	Oak Grove (MTYR)	n/a
Middle Creek (MTYR)	Swift Creek (T)	West Lake (MTYR)	n/a
White Oak (T)	Turner Creek (MTYR)	Turner Creek (MTYR)	<b>Baucom (T)*</b>
Salem (MTYR)	Baucom (T)	Turner Creek (MTYR)	n/a
Zebulon Magnet (T)	Carver (Mod)	Carver (Mod)	n/a

*\*revised recommendation shared during October 21, 2025 Board Work Session*

# Elementary Calendar Application Changes *(continued)*

*Recommendations based on improving transportation efficiency*

Current Base	Current Calendar Application School(s)	Proposed Calendar Application School
Abbotts Creek (T)	Brassfield (MTYR) & Durant Road (YR4)	Durant Road (YR4)
Hodge Magnet (YR4)	Forestville Road (T) & Knightdale (T)	n/a

# Middle School Calendar Application Changes

*Recommendations based on proposed base assignment changes*

Current Base	Current Calendar Application School(s)	Proposed Base	Proposed Calendar Application School
Dillard Drive Magnet (T)	Lufkin Road (MTYR)	West Lake (YR4)	n/a
Herbert Akins Road (MTYR)	Holly Ridge (T)	West Lake (YR4)	n/a
Lufkin Road (MTYR)	Apex (T)	Apex (T)	Lufkin Road (MTYR)
Mills Park (T)	Salem (MTYR)	Salem (MTYR)	Apex (T)
Salem (MTYR)	Apex (T)	Apex (T)	Lufkin Road (MTYR)

# Timeline & Next Steps

# Planning Timeline

**March 4, 2025** - Public Engagement Plan for the 2026-2027 WCPSS Enrollment Plan [BoE Work Session]

**April 8, 2025** - Initial Recommendations for Calendar Changes for 2026-27 [BoE Work Session]

**May 6, 2025** - Initial Planning Discussion for 2026-27 Enrollment Plan [BoE Work Session]

**June 3, 2025** - Final Recommendations for Calendar Changes for 2026-27 [BoE Meeting]

**June 17, 2025** - Review Progress of Public Engagement Plan [BoE Work Session]

**September 2, 2025** - Initial Draft of 2026-27 Enrollment Plan [BoE Work Session]

**October 21, 2025** - Feedback Review/ Revised Draft of 2026-27 Enrollment Plan [BoE Work Session]

**October 21, 2025** - Public Hearing [Special Called or Regular BoE Meeting]

**November 18, 2025** - Final Draft of 2026-27 Enrollment Plan for Review [BoE Work Session]

**November 18, 2025** - Final Plan Submitted for Approval [BoE Meeting]

# Next Steps for Impacted Families

Following approval of the 2026-27 School Enrollment Plan

- General message sent to **all** WCPSS families notifying them of the approved plan
- Specific message sent to families **directly impacted** by the approved changes (instructions for stability transfer process included for eligible students)
- **Stability Transfer application available November 25-December 12\***
- Principals with impacted students receive information to help them support families
- Assignment notifications\* sent to families beginning December 5

*\*due to printing deadlines, printed assignment notifications will NOT reflect the results of stability transfer requests*

# Next Steps for District Processes

- **October 15** - Pre-enrollment opens for 2026-2027
  - Magnet/ Year-round application opens
  - Early College application opens
- **November 1** - Magnet and Early College Fair
- **November 25-December 12** - **Stability Transfer application period**
- **December 5 - 12** - Distribution of Initial Assignment Notifications for all students
- **December 12** - Early College application closes
- **January 22, 2026** - Magnet/ Year-round application closes
- **February 19, 2026** - Early College, Magnet & Year-round results posted
- **February 23 - 27, 2026** - Magnet Welcome Week
- **March 2 - 13, 2026** - Official Request for Transfer application period

# Information & Updates

[www.wcpss.net/enroll](http://www.wcpss.net/enroll)

[www.wcpss.net/2026enrollmentproposal](http://www.wcpss.net/2026enrollmentproposal)  
*(will remain available until Jan 15, 2026)*

# Final Questions and/ or Thoughts...

# Attachments

- Public Engagement Summary Report, v2.0
- Copies of Prior Presentation Materials
  - Feedback Review 2026-27 School Enrollment Plan (Oct 21, 2025)
  - Initial Draft 2026-27 School Enrollment Plan (Sep 2, 2025)
  - Data Reports (Sep 2, 2025)
  - Detailed Maps (Sep 2, 2025)
  - Review Information (Sep 2, 2025)
- Board Policy 4150, Section A (included)

# Board Policy 4150: Section A

## A. Drawing of School Attendance Areas

The superintendent shall recommend to the Board of Education school assignment areas for the schools in the system. The Board will review the Superintendent's recommendation and make adjustments when needed. Assignment area boundaries shall be shown on maps approved by the Board and open to public inspection.

The Board shall complete any review of the assignment areas by January 1. Any proposed changes in the school assignment areas after January 1 shall require notice, a waiver of this policy provision, and a public hearing. Notification of assignment for students for the coming school year shall be made and distributed prior to April 1.

1. The assignment areas will be developed by balancing, to the extent reasonable, the goals and factors set forth below and will include target ranges, where appropriate, to accomplish these goals and factors:

# Board Policy 4150: Section A (*continued*)

## a. Student Achievement

To the extent practicable, student populations at each school will provide an optimal opportunity for academic success for all students. Factors for consideration include:

- 1) providing an opportunity for families to apply to designated application schools;
- 2) minimizing high concentrations of low-performing students at each school; and
- 3) minimizing high concentrations of students from low income families at each school.

# Board Policy 4150: Section A (*continued*)

## b. Stability

To the extent practicable, a student who is reassigned will be provided an opportunity to stay at the current school for one additional year if it is the terminal grade for an elementary or middle school (grades 5 and 8), and the student's siblings will be provided an opportunity to attend the same school for the one year period. The student and siblings must apply for these transfers at the designated time.

To the extent practicable, any student currently in high school who is reassigned from an existing school to an existing school will be provided an opportunity to stay at the current school until the terminal grade (grade 12). The student must apply for this transfer at the designated time.

Additional opportunities to remain at the current school, including for siblings, may be included in the annual student enrollment plan.

A change in domicile does not preserve the previous school assignment. However, Early College and Magnet application assignments are valid through the terminal grade of the school.

# Board Policy 4150: Section A (*continued*)

## c. Proximity

To the extent practicable, base school assignments will be within a reasonable distance of the student's home. Factors for consideration include:

- 1) allowing students living within the immediate vicinity of a school, defined by the assignment plan, to attend that school; and
- 2) minimizing splitting of neighborhoods when developing base attendance areas.

## d. Operational Efficiency

To the extent practicable, assignments will optimize the use of school facilities and transportation resources. Factors for consideration include:

- 1) minimizing under-enrolled schools;
- 2) minimizing overcrowded schools; and
- 3) maximizing transportation efficiencies.