



Toward Zero Waste is a 501(c)(3) nonprofit organization dedicated to promoting waste-conscious living in North Carolina through inspiration, education, and action.



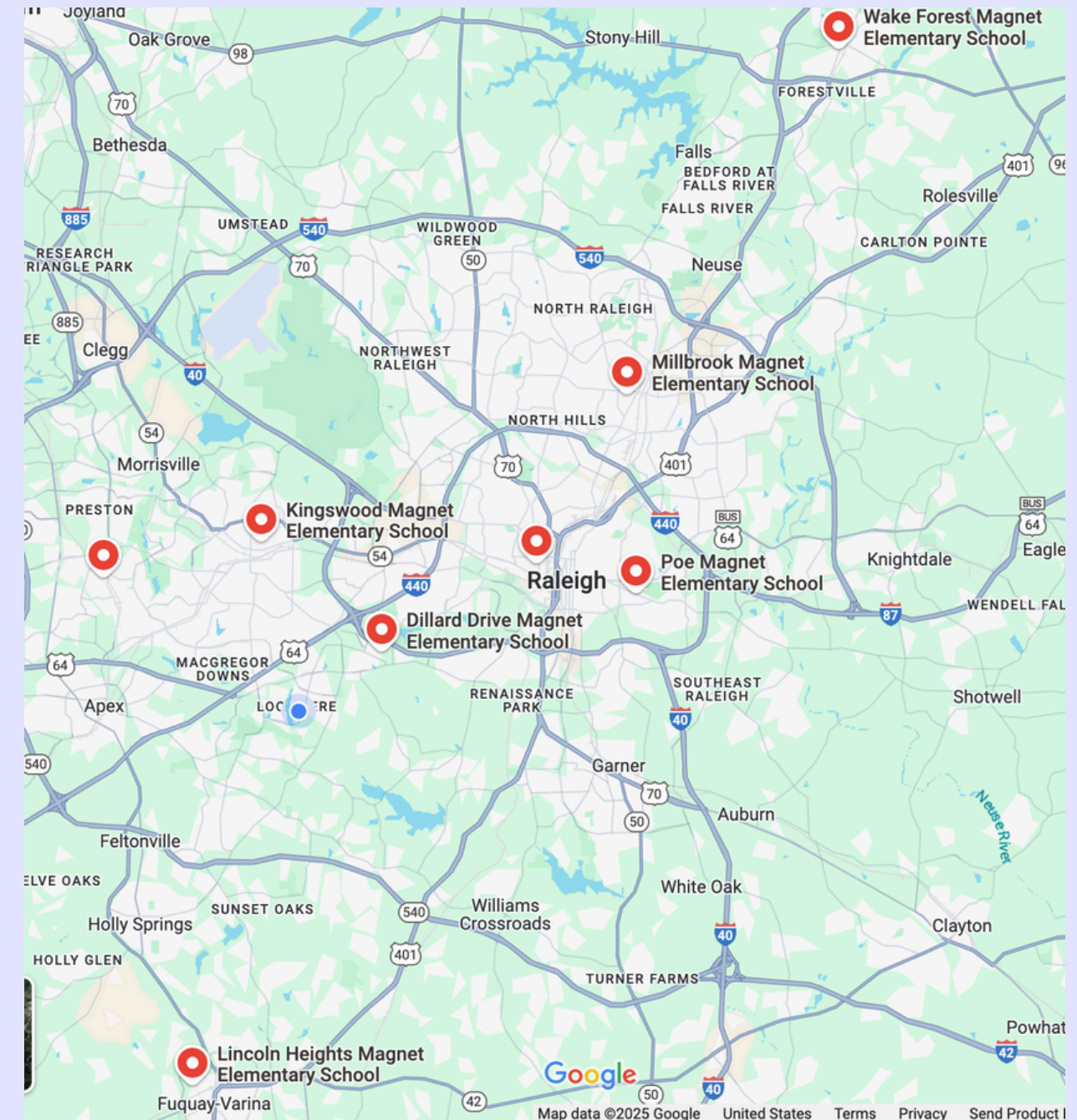
A food recovery program by Toward Zero Waste with Wake County Public School System to capture wholesome leftovers from Child Nutrition Services and feed students, rather than landfills.



PHASE ONE (2024-25) BEGAN MARCH 7TH, 2025



- Davis Drive Elementary
- Dillard Drive Magnet Elementary
- Kingswood Magnet Elementary
- Lincoln Heights Magnet Elementary
- Millbrook Magnet Elementary
- Poe Magnet Elementary
- Wake Forest Magnet Elementary
- Wiley Magnet Elementary





SHARE PROGRAM PILOT

MEASURING PROGRAM SUCCESS



41 FOOD ITEMS DONATED
PER DAY
PER SCHOOL
(7,380 PER SCHOOL YEAR)



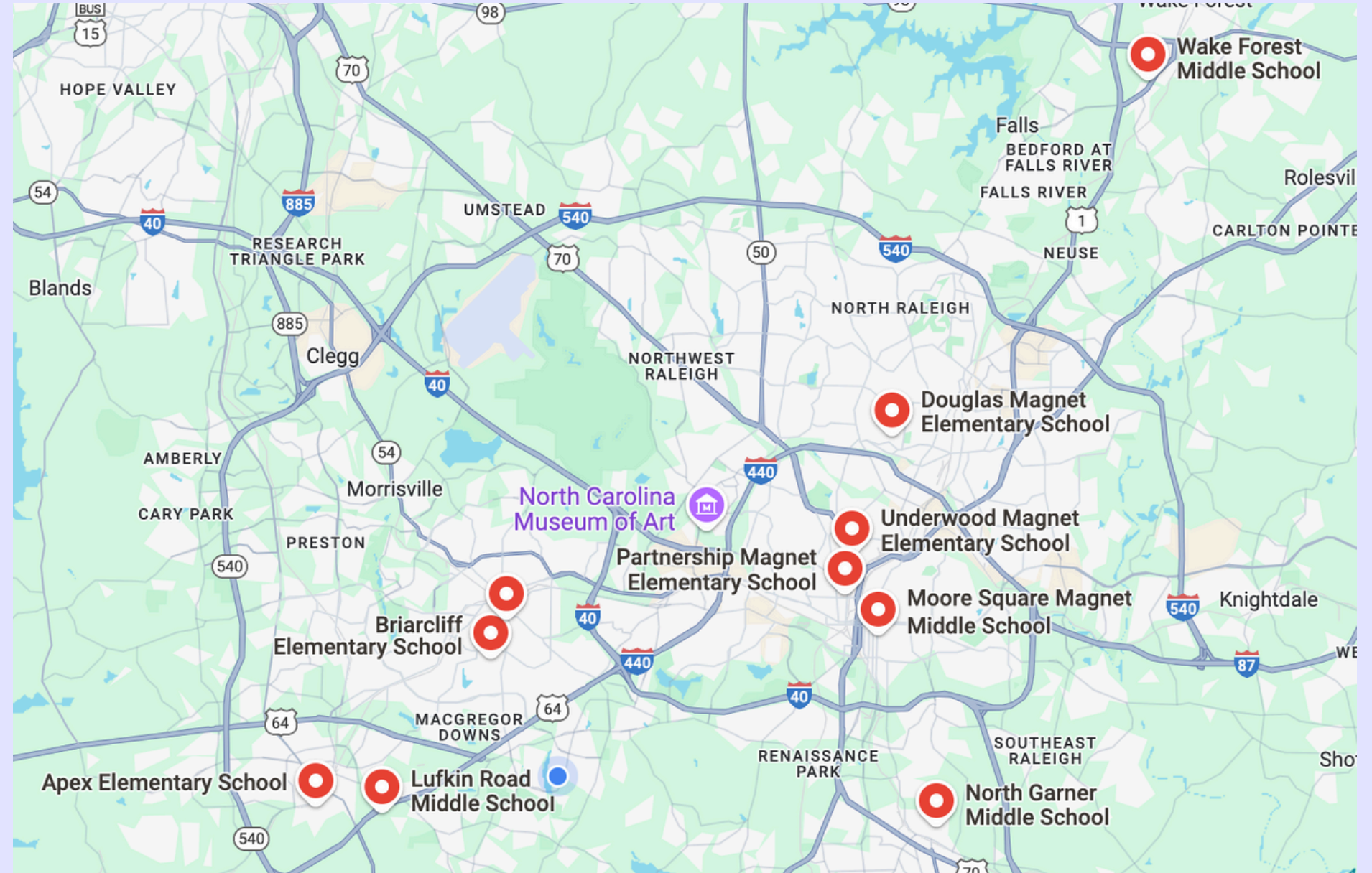


PHASE TWO (2025-26)

JULY-SEPTEMBER, 2025*



- Apex Elementary
- Briarcliff Elementary
- Cary Elementary
- Douglas Elementary
- Lufkin Road Middle
- Moore Square Middle
- North Garner Middle
- Partnership Elementary
- Underwood Elementary
- Wake Forest Middle



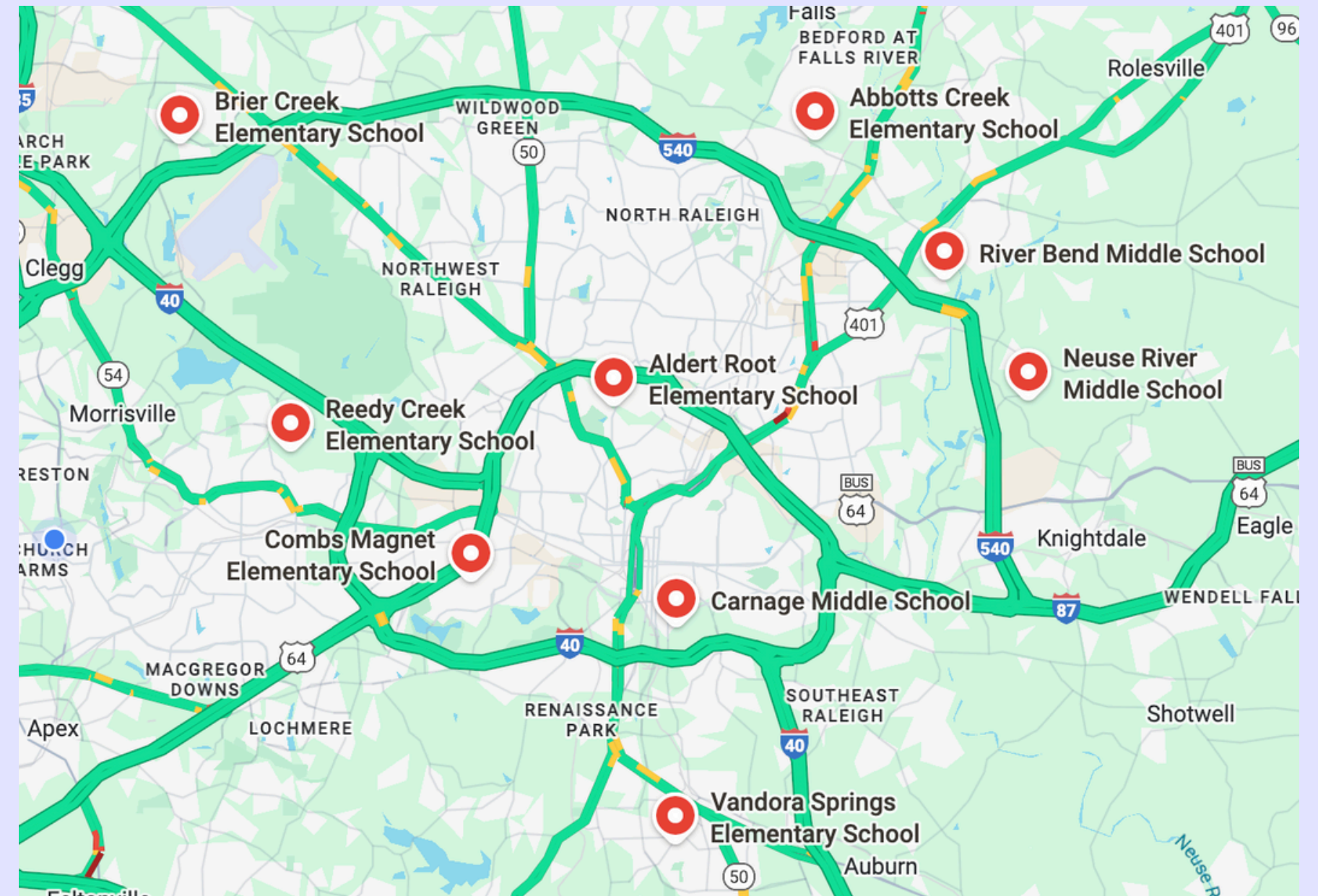
*Collaboration began with Wake County Community Services Department/Solid Waste for assistance with ongoing program management.



PHASE THREE (2025-26)

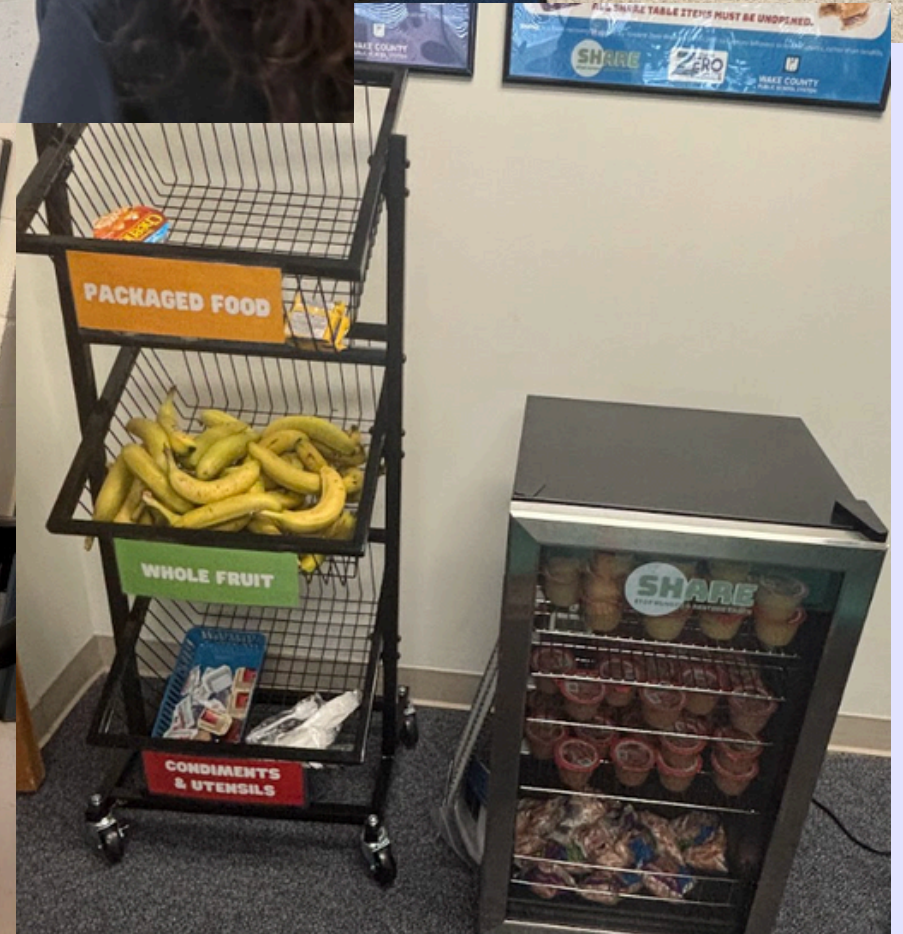
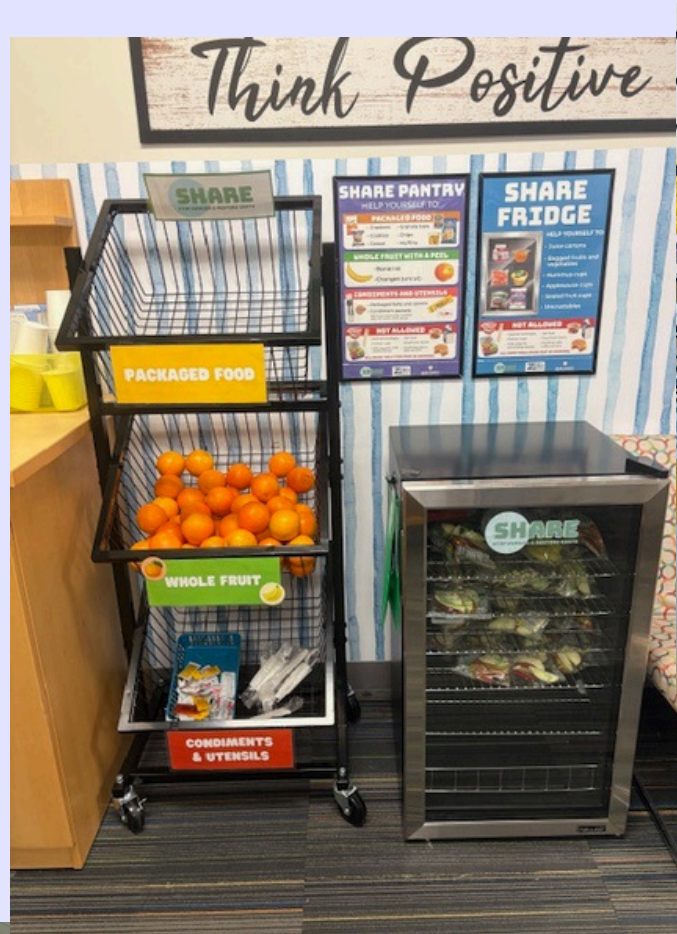
NOVEMBER - JANUARY, 2026

- Abbotts Creek Elementary
- Brier Creek Elementary
- Carnage Magnet Middle
- Combs Magnet Elementary
- Neuse River Middle
- River Bend Middle
- Reedy Creek Elementary
- Root Elementary
- Vandora Springs Elementary





SHARE PROGRAM PILOT



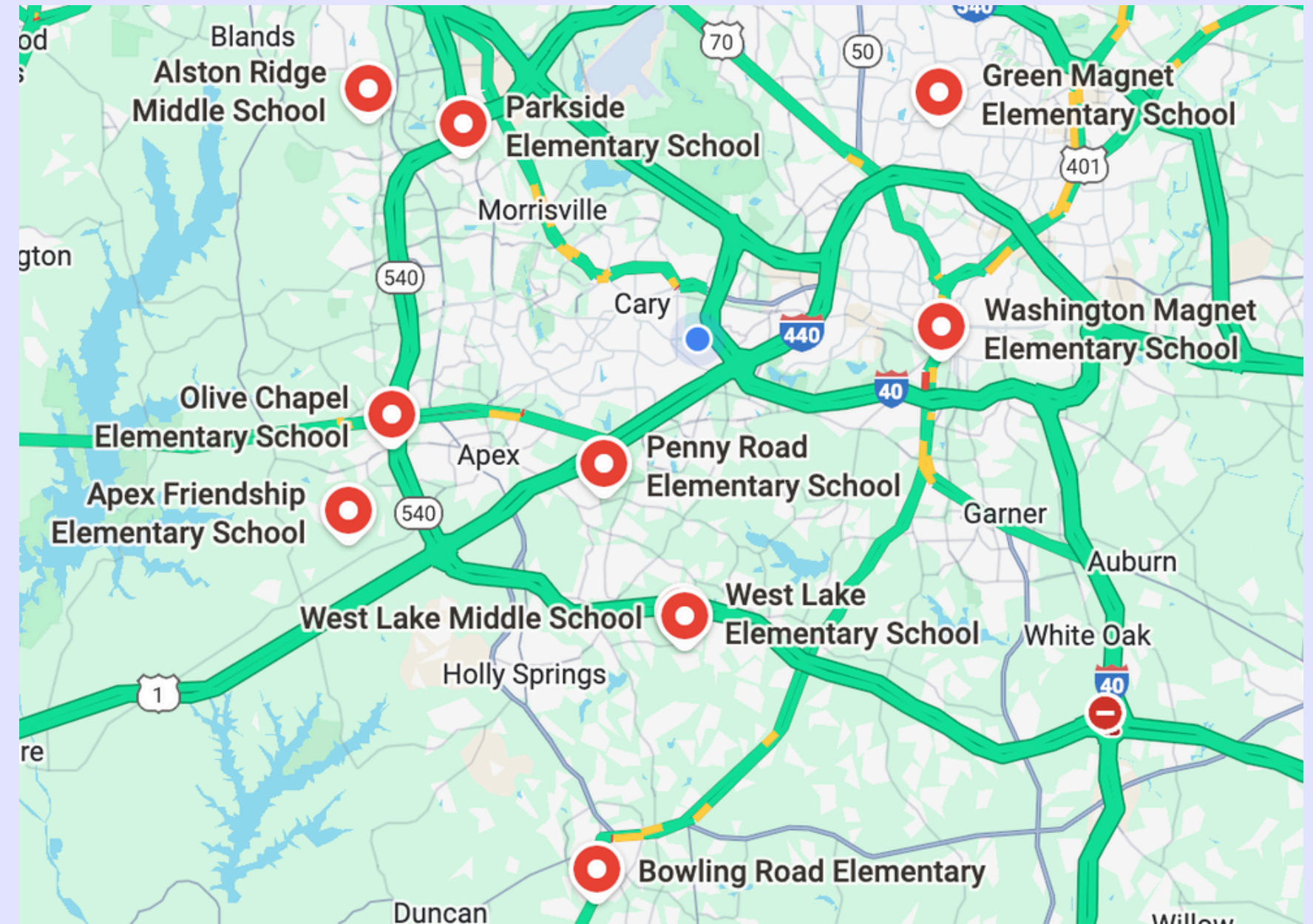


PHASE FOUR (2025-26)



PLANNED FOR MARCH-APRIL, 2026

- Alston Ridge Middle
- Apex Friendship Elementary
- Bowling Road Elementary
- Green Elementary
- Olive Chapel Elementary
- Parkside Elementary
- Penny Road Elementary
- Washington Elementary
- West Lake Elementary
- West Lake Middle





PHASES FIVE AND BEYOND (2026-27+)

BEGINNING JULY 2026

- **35+ schools remain on the SHARE “interested list”**
- **TZW will continue to launch new programs, dependent on funding and organizational capacity**



BEYOND THE PILOT

OPPORTUNITIES FOR GROWTH



- Expansion of SHARE to any interested school within WCPSS
- Collaboration with other school districts looking to develop food recovery programs
- Advocacy at the State level for expanding recovery opportunities in schools





SHARE PROGRAM CONTACTS

MEGAN HOLLER

MEGAN@TOWARDZEROWASTE.ORG

KATHLEEN LIEBOWITZ

KATHLEEN@TOWARDZEROWASTE.ORG