



WAKE COUNTY
PUBLIC SCHOOL SYSTEM



WCPSS BOARD OF EDUCATION WORK SESSION

Ligon Magnet Middle School **PRESENTATION OF CONCEPTUAL DESIGN OPTIONS**



Agenda

- Project Update
- Site Constraints/Analysis
- (3) Design Concepts
- Recommended Concept
- Next Steps/Schedule

WCPSS

Dr. Robert Taylor, Superintendent of Schools

Project Design Partner



Katherine Peele, Principal/Chief Practice Officer



Project Update

- Formation of Legacy Committee by Dr. Taylor
- Two Committee Meetings to-date (April 21, May 13)

Legacy Committee Makeup

WCPSS Superintendent	(5) JW Ligon Alumni
(2) WCPSS Board members	(2) County Commissioners
(2) City Council Members	(3) Ligon MS Staff Members
(3) Ligon MS Students	(2) Ligon MS Parents
WCPSS Staff (School, Facilities)	Design Team/Historian

Purpose of Legacy Committee:

“Provide cultural insight, historical context and community perspective in telling the story of JW Ligon Jr/Sr High School and provide inspiration for the reimagined Ligon Middle School Campus.”



Legacy Committee Meeting #1

- Introductions
- Purpose of Committee
- “What does success look like in 20 years?”
- “Capturing History” – Introduction to historian and history process
- Introduction to Design Process: Site Constraints, Review of (3) design concepts

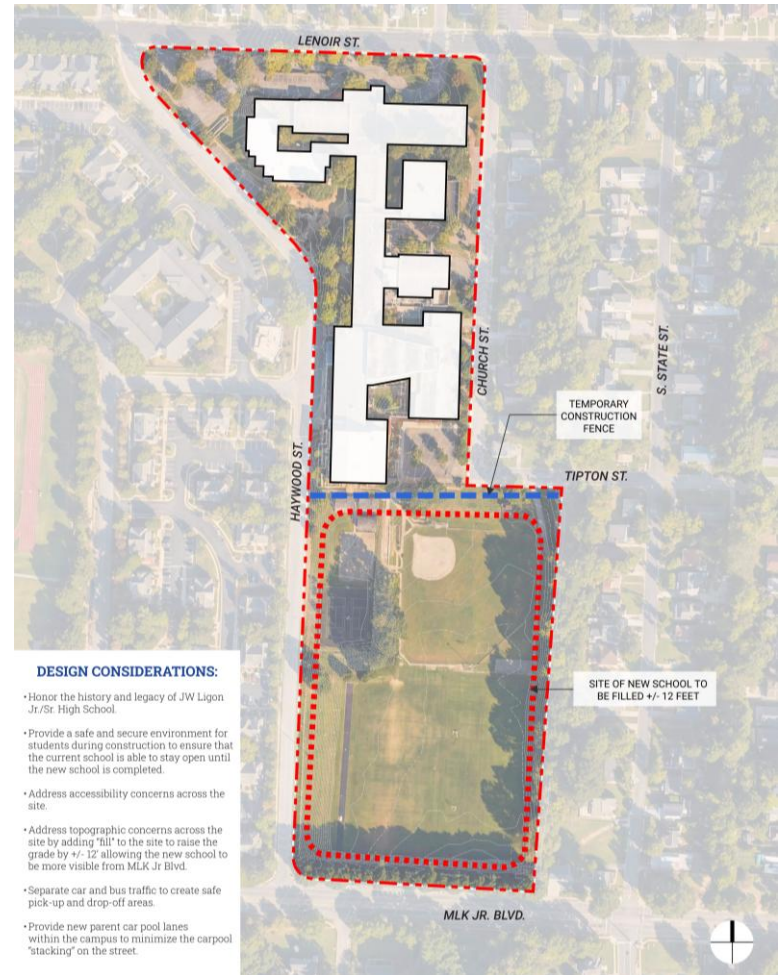
Legacy Committee Meeting #2

- Takeaways from Meeting #1
- Updates from Historian
- Process for gathering history, experience, artifacts, etc. from alumni
- “Thought Starter” Exercise: Design Elements to capture history
- Update on Design Concepts (narrowed to 2)



Site Constraints

- Size: **17 acres** (vs 24 acres WCPSS standard)
- **40 feet of topographic grade change** from Lenoir Street to MLK Jr. Blvd
- Existing School to stay occupied during construction (construction fencing)
- Existing ballfield site to be raised +/- 10 feet
- Create new bus queuing lane and parent carpool drive to address City of Raleigh traffic requirements



Design Drivers

- Ballfields move to upper site (after demolition of existing buildings)
- Potential new Parent/Visitor entry from Church Street
- New bus lane along Haywood Street
- Keep existing parking lot at corner of Lenoir and Haywood Streets (athletic parking)



(3) Preliminary Design Concepts

scheme A ALIGNING WITH HAYWOOD ST.

Celebrate the school's legacy beginning at the main entrance and continuing through the building. Key historical moments can culminate at the end of the central spine, creating a prominent showcase for the community off MLK Blvd.

CONCEPT DIAGRAM:



KEY IDEAS:

- Classroom wing is in proper solar orientation.
- Building 'front door' orients towards new entry drive.
- Building organization allows for one central public lobby.
- Allows for efficient night use of auditorium, gym, and dining.
- Central 'spine' will be visible from MLK Jr. Blvd.
- Arts programming is at the heart of the new building.



scheme B FACING MLK JR BLVD

By reorienting the school toward MLK Jr. Boulevard, the building asserts the school's identity, history, and future as a proud and visible presence along one of the community's most significant civic corridors. A beautiful activated courtyard will reach out to the original school, honoring its legacy.

CONCEPT DIAGRAM:



KEY IDEAS:

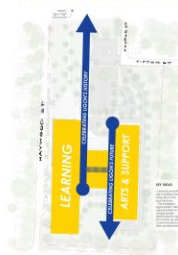
- Has a strong presence and orientation to MLK Jr. Blvd.
- Longest carpool queuing of all concepts.
- Ability to highlight history through a glassy entry point.
- Requires parents and visitors to enter the site from the rear of the school (unless Haywood St. entry is allowed).
- Classroom orientation is not ideal for proper daylighting.
- Will require two 'night lobbies' for public access.



scheme C FACING ORIGINAL JW LIGON CAMPUS

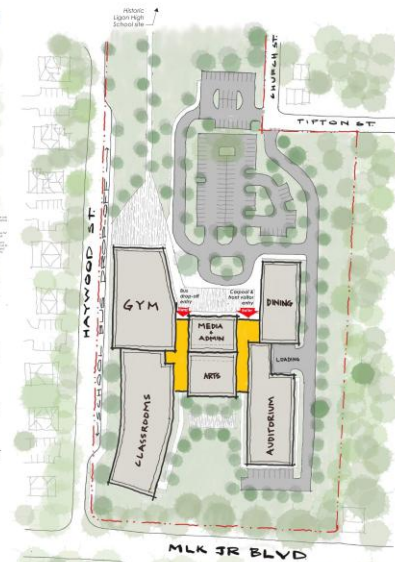
The new school intentionally turns toward the historic JW Ligon HS, creating a respectful dialogue across generations.

CONCEPT DIAGRAM:



KEY IDEAS:

- Front of building faces uphill towards original campus.
- Parent carpool - queuing is relatively short (compared to other concepts).
- Bus lane is shorter than other concepts.
- Longer travel distance for students to ballfields (due to building south on the site).
- Arts programming can be highlighted with view from MLK Jr. Blvd.
- Landscaped courtyard facing MLK Jr. Blvd.



Scheme A (Updated)

- Strong presence on Haywood and MLK Jr Blvd
- 2-story lobby that connects thru from Haywood to entry off parking
- One centralized lobby adjacent to all public functions
- Best solar orientation for classrooms
- Design concept: “History Spine”

scheme A ALIGNING WITH HAYWOOD ST



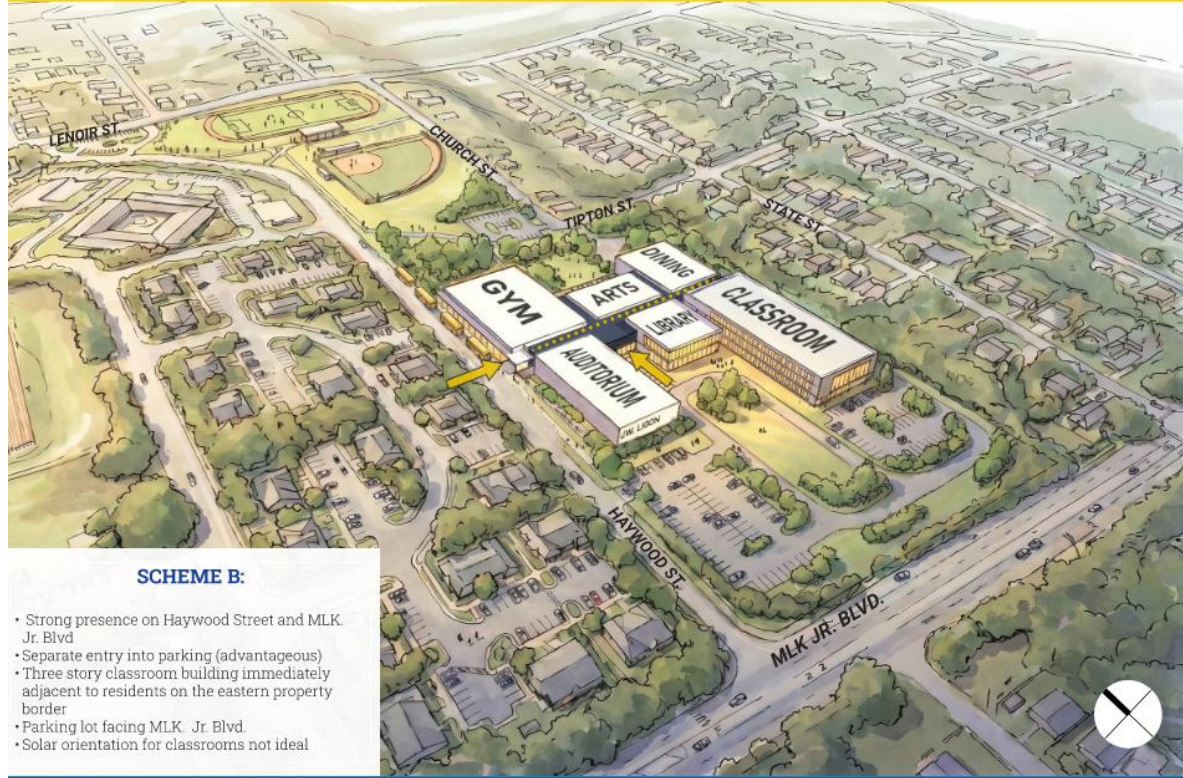
SCHEME A:

- Strong presence on Haywood Street and MLK, Jr Blvd
- Ceremonial lobby connects from Haywood Street (2nd level) through to main public lobby entry from parking (1st level)
- Centralized lobby adjacent to all public functions
- Best solar orientation for classrooms
- Single parking/carpool entry
- Design concept organized around a strong "history spine"

Scheme B (Updated)

- Strong presence on Haywood and MLK Jr Blvd
- Separate entry lobby off Haywood for bus riders/nighttime use
- Separate entry into parking lot (advantageous)
- Three-story classroom building right next to residential neighbors
- Parking lot facing MLK Jr Blvd
- Solar orientation not ideal for classrooms

scheme B FACING MLK JR BLVD



scheme A

ALIGNING WITH HAYWOOD ST



SCHEME A:

- Strong presence on Haywood Street and MLK, Jr Blvd
- Ceremonial lobby connects from Haywood Street (2nd level) through to main public lobby entry from parking (1st level)
- Centralized lobby adjacent to all public functions
- Best solar orientation for classrooms
- Single parking/carpool entry
- Design concept organized around a strong 'history spine'

**Proposed
Design Direction:**

**Scheme A
(Updated)**

thought starters
Design Elements to Honor History

Potential Themes:

- Origin & Advocacy
- Excellence & Culture
- Disruption & Transition
- Legacy & Family
- Present



HISTORY TIMELINE



ARTIFACTS + MEMORIALIZATION

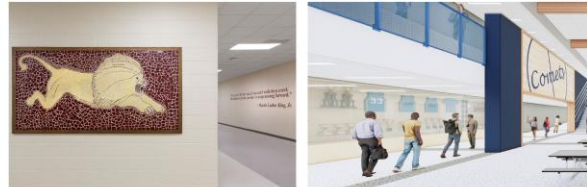
thought starters
Design Elements to Honor History

Potential Themes:

- Origin & Advocacy
- Excellence & Culture
- Disruption & Transition
- Legacy & Family
- Present



GRAPHICS: QUOTES + ALUMNI



RE-USE OF MATERIALS

thought starters
Design Elements to Honor History

Potential Themes:

- Origin & Advocacy
- Excellence & Culture
- Disruption & Transition
- Legacy & Family
- Present



ALUMNI PAVILION



EXCELLENCE + CULTURE ON DISPLAY

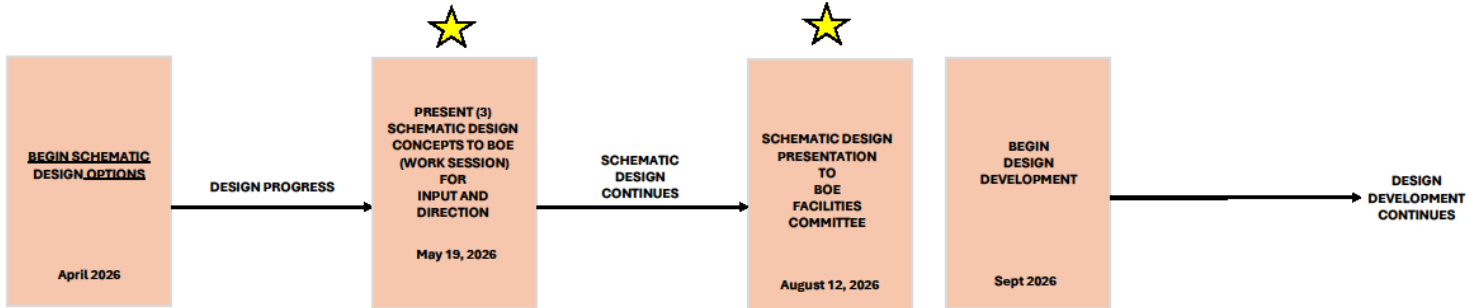


EXTERIOR ELEMENTS

LIGON LEGACY COMMITTEE



LIGON MIDDLE SCHOOL DESIGN SCHEDULE



Schedule / Phasing

- **Design:** Complete Fall 2027
- **Phase 1 Site Work Bidding:** February 2027
- **Phase 1 Site Work Construction:** Summer 2027
- **Phase 2 Bidding:** October 2027
- **Phase 2 Site Construction:** Spring 2027
- **New Building Opens:** Spring/Summer 2030
- **Demo/New Ballfield Construction:** Summer 2030
- **All Construction Complete:** Summer 2031



A wide-angle photograph of a modern library interior. The space is bright and open, featuring light-colored wood bookshelves filled with books. A prominent feature is a large, bright green wall section. In the foreground, a long, low wooden table is surrounded by people, some sitting on the floor and others on chairs, engaged in reading or conversation. Large windows in the background offer a view of the outdoors. The ceiling is high with exposed ductwork and modern lighting fixtures. The overall atmosphere is clean, organized, and inviting.

Thank you!

